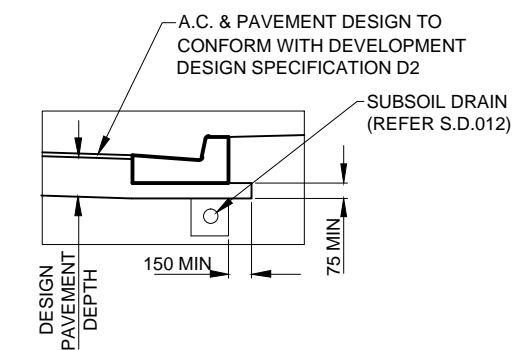


NOTE:
✱ TWEED SHIRE COUNCIL MAY CONSIDER STEEPER CROSSFALLS IN THIS ZONE WHERE TOPOGRAPHICAL CONSTRAINTS EXIST.

NOTES:
REFER S.D.007 & S.D.008 FOR STANDARD KERB PROFILES AND DETAILS.
REFER S.D.012 FOR SUB-SOIL DRAINAGE DETAILS.
REFER S.D.013 FOR FOOTPATH AND CYCLEWAY DETAILS.
REFER S.D.017 FOR DRIVEWAY DETAILS.

SCALE: A1 SHEET 1:50, A3 SHEET 1:100
0 0.5 1 2 3 4 5 m



		DESIGN UNIT COUNCIL OFFICES TUMBULGUM ROAD, MURWILLUMBAH, NEW SOUTH WALES 2484 PHONE 02 6670 2400 FAX 02 6672 7513 WEBSITE www.tweed.nsw.gov.au		DESIGN ENGINEER DATE 28.08.14 DESIGN MANAGER DATE 28.08.14 DRAWN ENGINEERING & OPERATIONS DESIGN UNIT SCALE 1:100 (A3)	PROJECT: ROAD WORKS STANDARDS PLAN TITLE: URBAN ROAD CROSS SECTIONS (SHEET 2 OF 3 SHEETS) ACAD FILE No G:_AAA TSC STANDARD DRAWINGS\000 ROAD WORKS STANDARDS\S.D.002 (Aug-14 Rev C)	DRAWING NUMBER: S.D.002 AUG 2014
C PLAN FORM UPDATED, OFFSETS TO FOOTPATH & NOTES AMENDED G.P.C. 08.2014 B DRAWING ADOPTED FOR ISSUE TO PUBLIC R.A.E. 06.2004 A ORIGINAL ISSUE R.A.E. 04.2004 ISSUE AMENDMENT DETAILS INITIALS DATE	0 10 20 30 40 50 100 150 200 250					