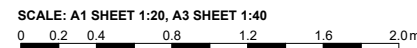


PLAN
SCALE 1:40 (A3)



K	ACCESS LID CLASS REVISED. STANDARD DRAWING Nos. ADDED	C.A.H	05.2022
J	ACCESS LID TYPE ADDED	J.M.M.	06.2021
I	ACCESS LADDER REMOVED	S.K.J	03.2019
H	PIPEWORK UPGRADED & NOTES AMENDED	G.P.C.	06.2015
G	PLAN FORM UPGRADED, PLAN & SECTION REMOVED (NOW SHOWN IN S.D.220/04) OVERFLOW REMOVED & FLOWMETER CONDUIT ADDED	G.P.C.	08.2014
F	LID & LADDER POSITION	G.P.C.	07.2009
E	CABINET OPENING DIRECTION	G.P.C.	11.2008
D	LADDER POSITION, LID OPENING DIRECTION & NOTE	G.P.C.	08.2008
C	VENT, LID SIZE, OVERFLOW & CONDUIT ARRANGEMENT	G.P.C.	02.2008
B	WATER SERVICE AMENDMENT	J.L.F.	01.2007
A	ORIGINAL ISSUE	J.L.F.	05.2007
ISSUE	AMENDMENT DETAILS	INITIALS	DATE



DESIGN UNIT

COUNCIL OFFICES
TUMBULGUM ROAD,
MURWILLUMBAH,
NEW SOUTH WALES 2484
PHONE 02 6670 2400
FAX 02 6672 7513
WEBSITE www.tweed.nsw.gov.au

DESIGN ENGINEER	<i>[Signature]</i> DATE 18.05.15
DESIGN MANAGER	<i>[Signature]</i> DATE 22.05.15
DRAWN	ENGINEERING & OPERATIONS DESIGN UNIT
SCALE	1:40 (A3)

PROJECT:	SEWERAGE WORKS STANDARDS
PLAN TITLE:	2.0m DIAMETER PUMP STATION (SHEET 3 OF 6 SHEETS) GENERAL ARRANGEMENT

DRAWING NUMBER:	S.D.220-03
DATE:	MAY 2022



ACAD FILE No: G:_AAA TSC STANDARD DRAWINGS\200 SEWERAGE WORKS\S.D.220-02 (May - 21 Rev K)