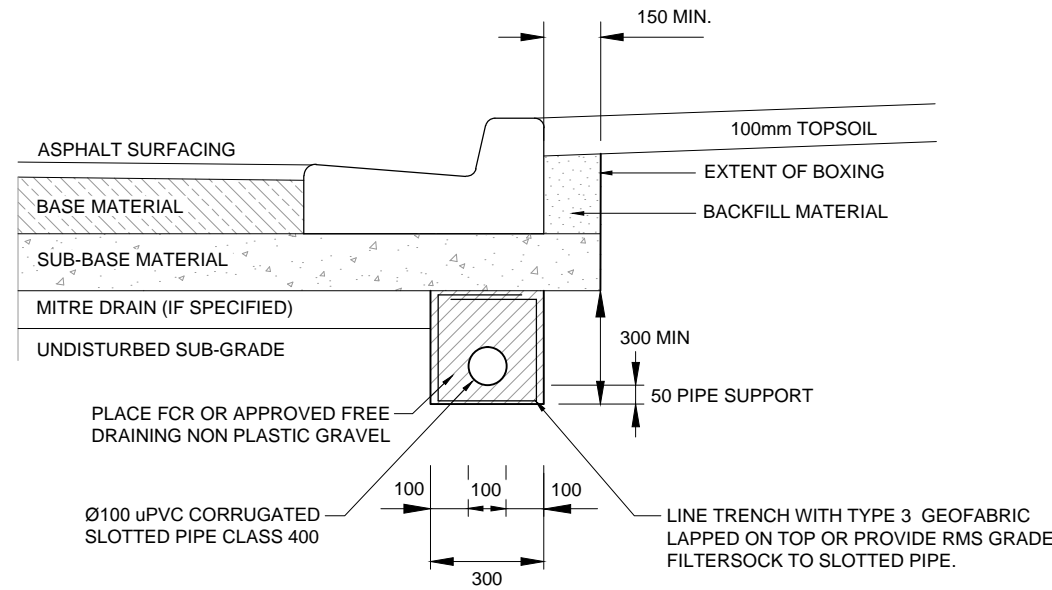
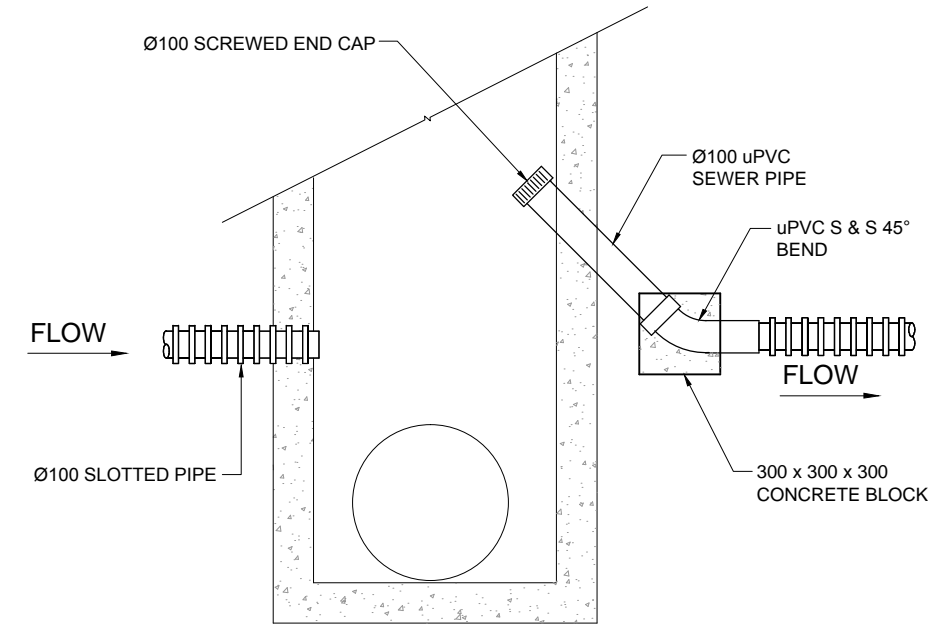


**SUB-SOIL DRAIN NOTES**

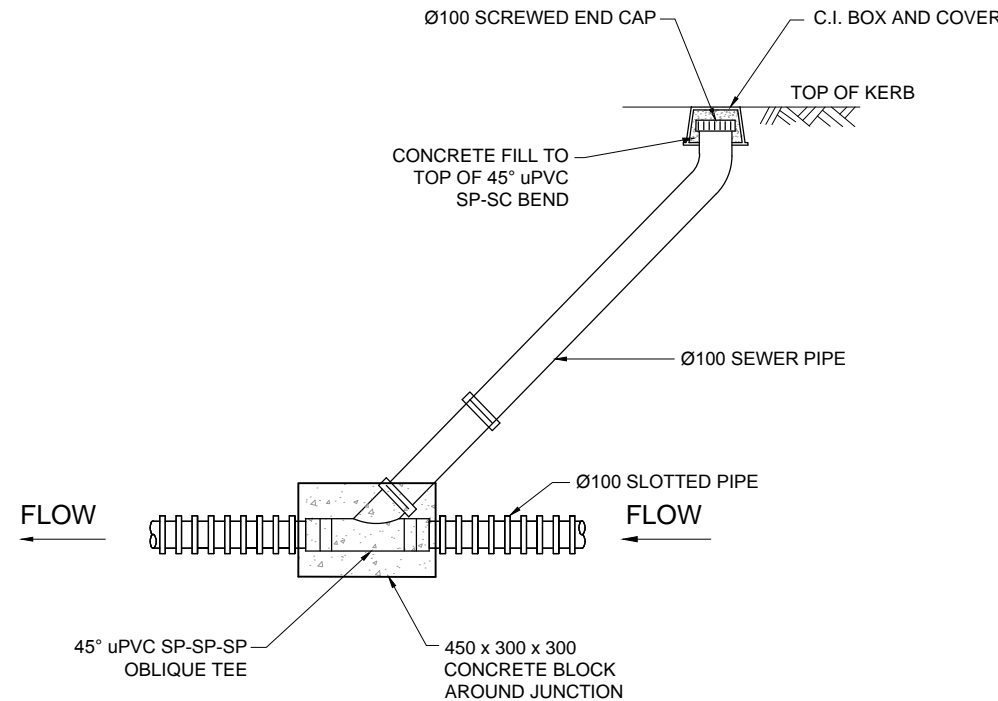
1. THE SIDE DRAIN DEPTH SHALL BE A MINIMUM 150mm BELOW THE UNDISTURBED SUB-GRADE. WHERE A HIGH WATER TABLE IS PRESENT DEEPER SIDE DRAINS, POSSIBLY IN COMBINATION WITH MITRE DRAINS, MAY BE SPECIFIED.
2. UPVC 100 DIA. DRAIN PIPES AND FITTINGS AT INLETS AND OUTLETS TO BE SEWER CLASS 400 TO A.S. 1254.
3. UPVC 100 DIA. CORRUGATED SLOTTED PIPES AND FITTINGS TO BE SEWER CLASS 400 TO A.S.2439.
4. ALL CONNECTIONS INCLUDING THE JOINING OF LENGTHS OF CORRUGATED PIPE TO BE MADE USING STANDARD FITTINGS.
5. DRAIN PIPES TO BE LAID TO A MIN. GRADE 1 IN 250 WITH 100 FALL REQUIRED OVER A 500 LENGTH AT INLETS AND OUTLETS TO ENSURE DRAINAGE TO FULL DEPTH OF SIDE DRAIN TRENCH.
6. IF FCR FILTER MATERIAL IS USED, THE GEOFABRIC IS NOT REQUIRED TO COVER THE UPPER SURFACE OF THE DRAIN.
7. ADOPT THE SAME TYPE 3 GEOFABRIC (i.e. BIDIM A49 OR EQUIVALENT) AND FILTER MEDIUM FOR THE SIDE DRAINS AND MITRE DRAINS.
8. ALL INLETS TO BE CAPPED AND ALL OUTLETS RENDERED VERMIN PROOF BY INSERTION OF A PLUG OF CRUSHED WIRE MESH (NOT REQUIRED WHEN THE OUTLET IS INSIDE A PIT WALL). REFER TO RMS STANDARD DRAWING MD.R33.A04 (SHEETS 1 & 2) FOR DETAILS OF VERMIN PROOF OUTLET STRUCTURES FOR SUBSURFACE DRAINS.
9. WHERE A GULLY, PIPE OR MANHOLE IS NOT PRESENT FOR SIDE DRAIN OUTLET. THE SIDE DRAIN IS TO BE GRADED VIA REAR OF KERB AND OUTLET TO KERB AND GUTTER WITH A FULL HEIGHT UPVC KERB ADAPTOR.
10. OUTLETS INTO PIPES OR MANHOLES TO BE ABOVE THE TOP HALF OF THE PIPE. BRASS MARKERS BEARING LETTERS 'SD' TO BE SECURED TO KERB FACE AT 20m INTERVALS ALONG THE SIDE DRAIN ALIGNMENT, AT ALL INLETS, OUTLETS AND MITRE DRAINS, AND MARKING MAJOR CHANGE IN DIRECTION.



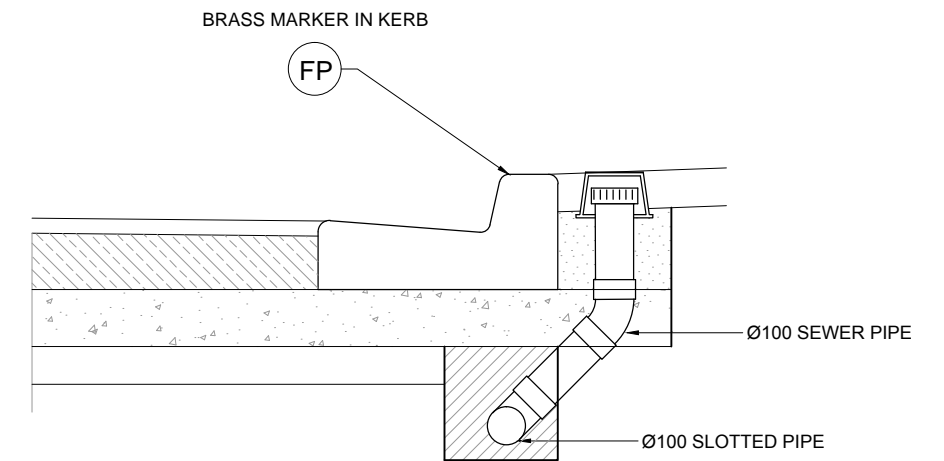
**SUB-SOIL DRAIN DETAIL**  
SCALE 1:20



**FLUSHING POINT DETAIL AT GULLY PIT**  
NOT TO SCALE



**FLUSHING POINT DETAIL**  
NOT TO SCALE



H	NOTES AMENDED & PLAN FORM UPGRADED	A.R.	10.2015
G	CLASS OF SLOTTED PIPE & BIDUM AMENDED	G.P.C.	10.2009
F	EXTENT OF BOXING & BACKFILL MATERIAL AMENDED	G.P.C.	10.2008
E	SUBSOIL DRAIN LIFTED, F.P. & NOTES AMENDED	N.R.	12.2007
	PREVIOUS AMENDMENTS NOT SHOWN		
ISSUE	AMENDMENT DETAILS	INITIALS	DATE



**DESIGN UNIT**  
COUNCIL OFFICES  
TUMBULGUM ROAD,  
MURWILLUMBAH,  
NEW SOUTH WALES 2484  
PHONE 02 6670 2400  
FAX 02 6672 7513  
WEBSITE www.tweed.nsw.gov.au

DESIGN ENGINEER	<i>W. Boyd</i>	DATE 19.10.15
DESIGN MANAGER	<i>P. Meyer</i>	DATE 19.10.15
DRAWN	ENGINEERING & OPERATIONS DESIGN UNIT	
SCALE	AS SHOWN	

PROJECT:	ROAD WORKS STANDARDS	DRAWING NUMBER:	<b>S.D.012</b>
PLAN TITLE:	SUB SOIL DRAINAGE DETAILS		<b>OCT 2015</b>

ACAD FILE No: G:\TSC STANDARD DRAWINGS\ROADWORKS STANDARDS\S.D.012 (July-15 Rev H).dwg

0 10 20 30 40 50 100 150 200 250