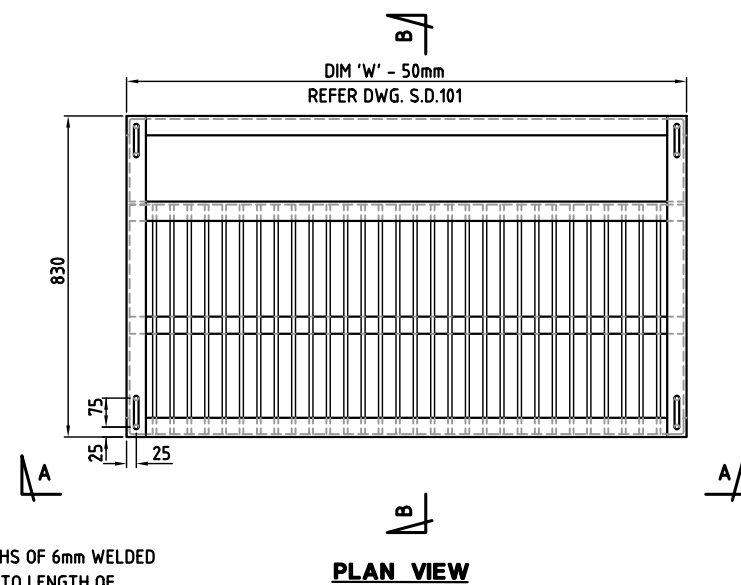
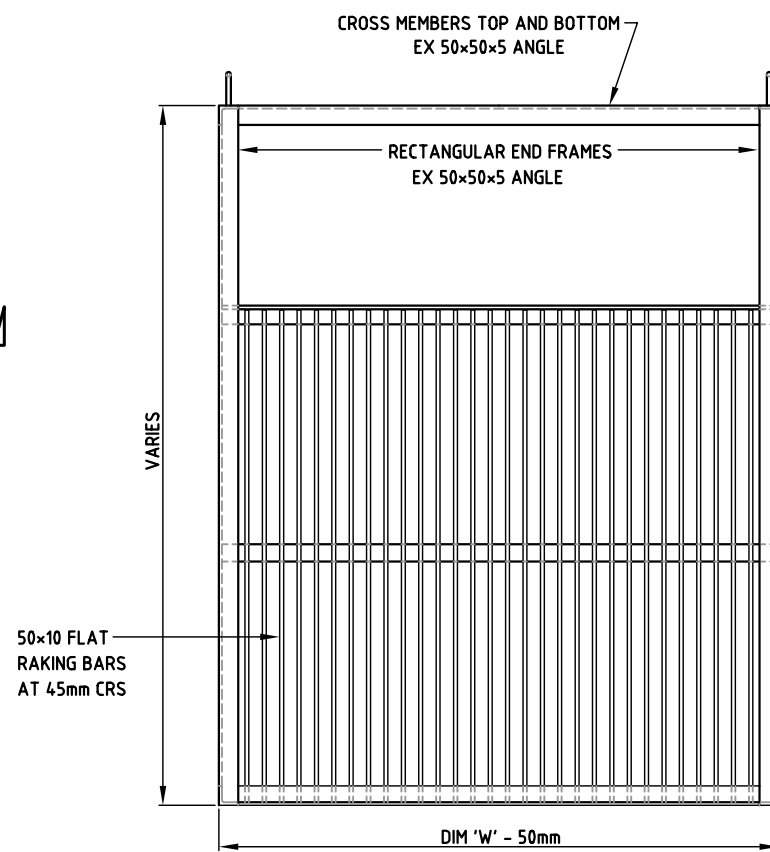


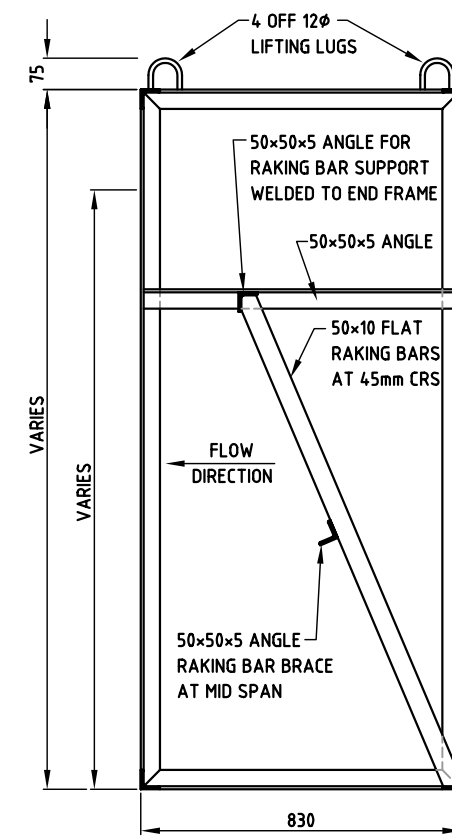
**PIT ARRANGEMENT**  
SCALE 1:20



**PLAN VIEW**

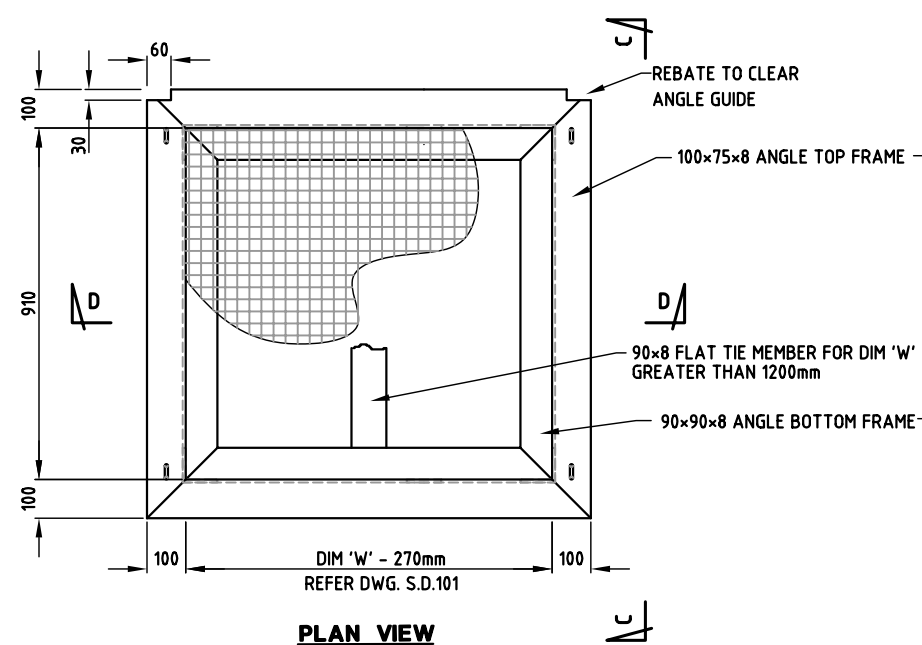


**ELEVATION A-A**

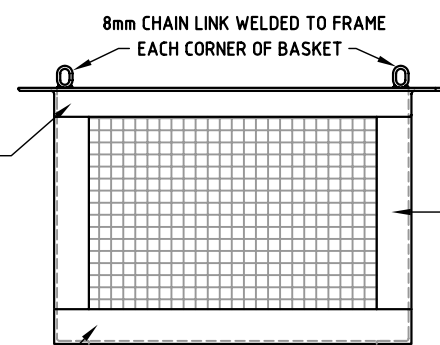


**SECTION B-B**

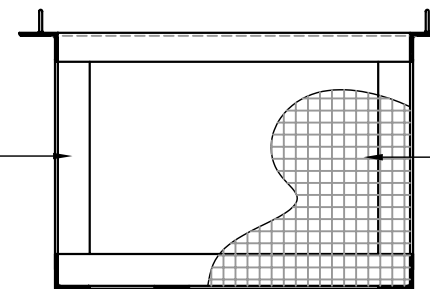
**TRASH RACK DETAIL**  
SCALE 1:10



**PLAN VIEW**



**ELEVATION C-C**



**SECTION D-D**

**SEDIMENT BASKET DETAIL**  
SCALE 1:10

**NOTES**

1. TRASH RACK & SEDIMENT BASKET TO BE HOT DIP GALVANISED AFTER FABRICATION
2. ALL JOINTS TO BE FULLY WELDED
3. FOR PIPES LARGER THAN 1200Ø, SEDIMENT BASKET MEMBERS SHALL BE RESIZED TO SUIT POTENTIAL SEDIMENT MASS, OR TWO SMALLER BASKETS MAY BE USED

B	DRAWINGS ADOPTED FOR ISSUE TO PUBLIC	R.A.E.	5.2004
A	RE-ISSUED	R.A.E.	4.2004
ISSUE	AMENDMENT DETAILS	INITIALS	DATE

**TWEED SHIRE COUNCIL**  
PLANNING AND DESIGN UNIT

COUNCIL OFFICES  
TUMBULGUM ROAD,  
MURWILLUMBAH,  
NEW SOUTH WALES, 2484

PHONE MURWILLUMBAH 02 66720400  
FAX MURWILLUMBAH 02 66727513  
EMAIL imunro@tweed.nsw.gov.au

DESIGN ENGINEER (SIGNED)	<i>[Signature]</i>	DATE	6.2004
PLANNING & DESIGN MGR.	<i>[Signature]</i>	DATE	6.2004
DESIGNED	R.A.E.	2.2004	DESIGN NO.
DRAWN	R.A.E.	2.2004	SURVEY NO.
CHECKED	I.M.	2.2004	REDUCTION RATIO
HORIZONTAL DATUM			
VERTICAL DATUM			

PROJECT:	<b>STORMWATER STANDARDS</b>
PLAN TITLE:	<b>TRASH RACK &amp; SEDIMENT BASKET DETAILS</b>

DRAWING NUMBER:	<b>S.D.102</b>
SHEET 1 OF 1 SHEETS	ISSUE <b>A B</b>