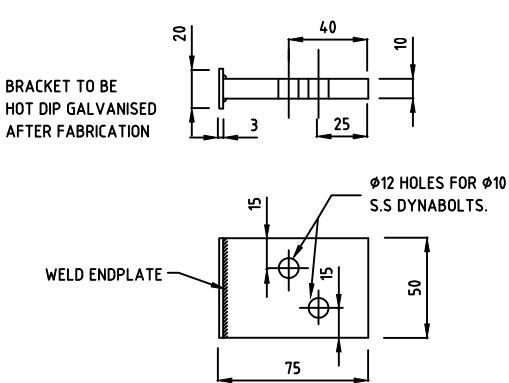
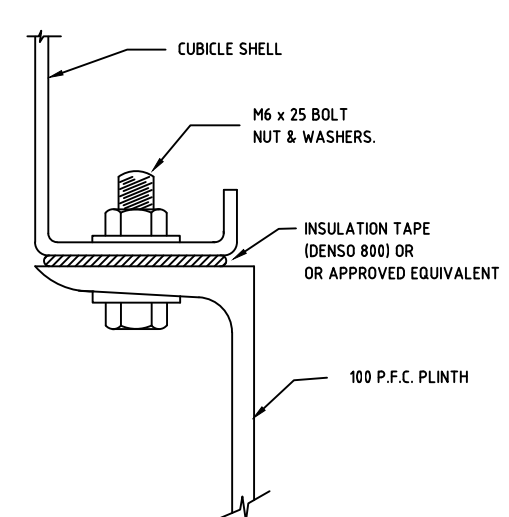
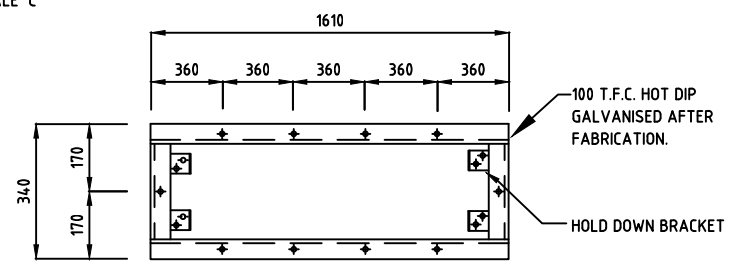
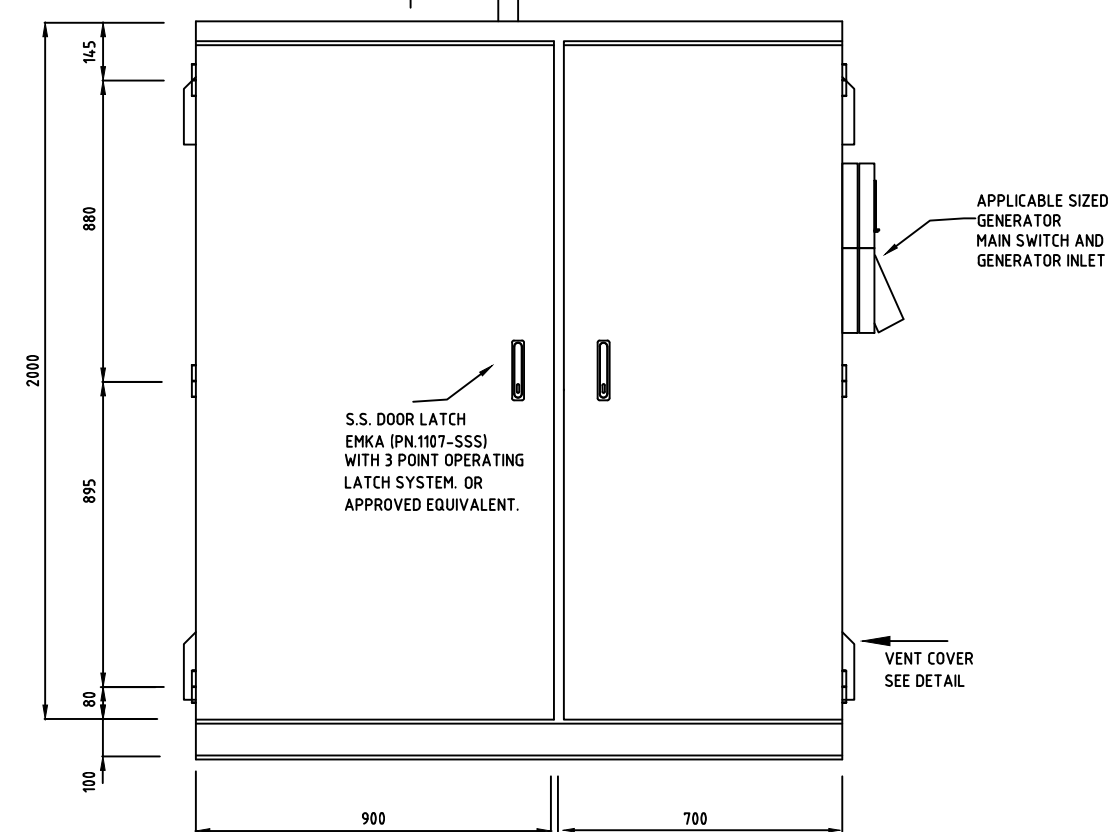
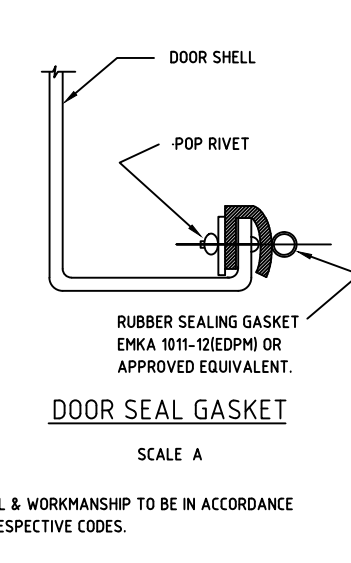
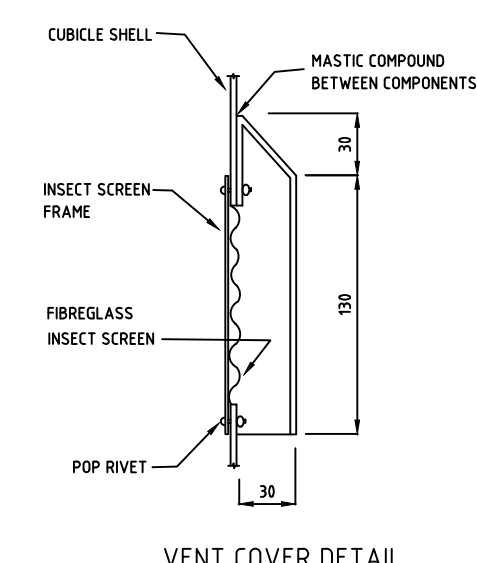
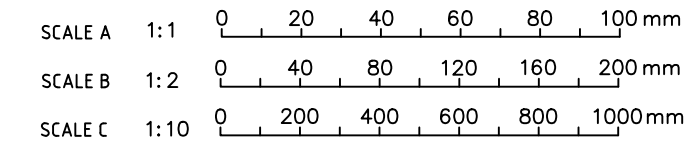


NOTE 1: CONTACT TSC MECH / ELEC FOR SUPPLY OF POLE AND BRACKETS



- NOTES**
- 1 ALL MATERIAL & WORKMANSHIP TO BE IN ACCORDANCE WITH THEIR RESPECTIVE CODES.
  - 2 THE CUBICLE TO BE WEATHERPROOF & VERMIN PROOF.
  - 3 STAINLESS STEEL COMPONENTS TO BE MADE FROM 361 GRADE, 28 FINISH STAINLESS STEEL
  - 4 FABRICATIONS FROM 2.0 THICK, 5251-H34 GRADE MILL FINISH ALUMINIUM UNLESS SPECIFIED OTHERWISE.
  - 5 ALL WELDS TO BE IN ACCORDANCE WITH A.S. 1554 FOR MILD STEEL & A.S. 1665 FOR ALUMINIUM.
  - 6 BENDING RADII FOR ALUMINIUM SHALL BE A MINIMUM OF 1.5t WHERE "t" IS THE THICKNESS.
  - 7 THE BASE ASSEMBLY & BRACKETS SHALL BE HOT-DIP GALVANISED AFTER FABRICATION.
  - 8 ALL ITEMS TO BE HOT-DIP GALVANISED SHALL BE FULLY FABRICATED AND DRILLED BEFORE GALVANISING. AFTER GALVANISING ANY DAMAGE TO THE SURFACE SHALL BE REPAIRED BY THE APPLICATION OF COLD GALVANISING PAINT.
  - 9 ALL DIMENSIONS TO BE MADE TO A TOLERANCE OF 1mm.
  - 10 UNLESS STATED OTHERWISE ALL DIMENSIONS ARE TO THE OUTSIDE OF THE COMPONENTS.
  - 11 CONTRACTORS TO WIRE ICOM DATA RADIO UP TO CB Q45, AS PER DIAGRAM S.D. 801/04
  - 12 CONTRACTORS TO INSTALL AND MOUNT ANTENNA BRACKET TO REAR OF BOARD.



ISSUE	AMENDMENT DETAILS	Drawn	Checked	Approved	Date
00	ORIGINAL ISSUE			D.F	8.8.12
01	AMENDED ISSUE RELEASED FOR PUBLICATION	E.K	P.B	D.F	13.08.13
02	AMENDED GENERATOR INLET & SHEET NAME	P.B	D.R	J.G	29.07.20

**ELECTRICAL UNIT**

COUNCIL OFFICES  
ALTONA ROAD,  
CUDGEN NSW 2487.

PHONE 02 66740342  
FAX 02 66741069  
WEBSITE www.tweed.nsw.gov.au

DESIGNED: *[Signature]*

DRAWN: *[Signature]*

APPROVED: *[Signature]*

SCALE NTS

ACAD FILE No.:

PROJECT: SEWAGE PUMP STATIONS  
ELECTRICAL STANDARD DRAWINGS

PLAN TITLE: SWITCHBOARD CABINET DETAILS - DOUBLE DOOR >15.5kW (ATS OR ATV)

SHEET 1 OF 3

DRAWING NUMBER:	
SD-820A/14	
SHEET	14 OF 19
REV	02
DATE	20/08/2020