

Tweed Road Contribution Plan - Works Schedule

Tweed Road Contribution Plan 2024

Status:

- Commenced Detailed Estimate
- Not Started

Cadastre



Civic and Cultural Centre
3 Tumbulgum Road
Murwillumbah NSW 2484

T | (02) 6670 2400 | 1300 292 872
W | www.tweed.nsw.gov.au
E | RoadsandStormwater@tweed.nsw.gov.au

SHIRE COUNCIL

PO Box 816, Murwillumbah NSW 2484

Disclaimer: While every care is taken to ensure the accuracy of this data, Tweed Shire Council makes no representations or warranties expressed or implied, statutory or otherwise, about its accuracy, reliability, completeness or suitability for any particular purpose and disclaim all responsibility and all liability (including without limitation, liability in negligence) for all expenses, losses, damages (including indirect or consequential damage) and costs which may be incurred as a result of data being inaccurate in any way and for any reason.

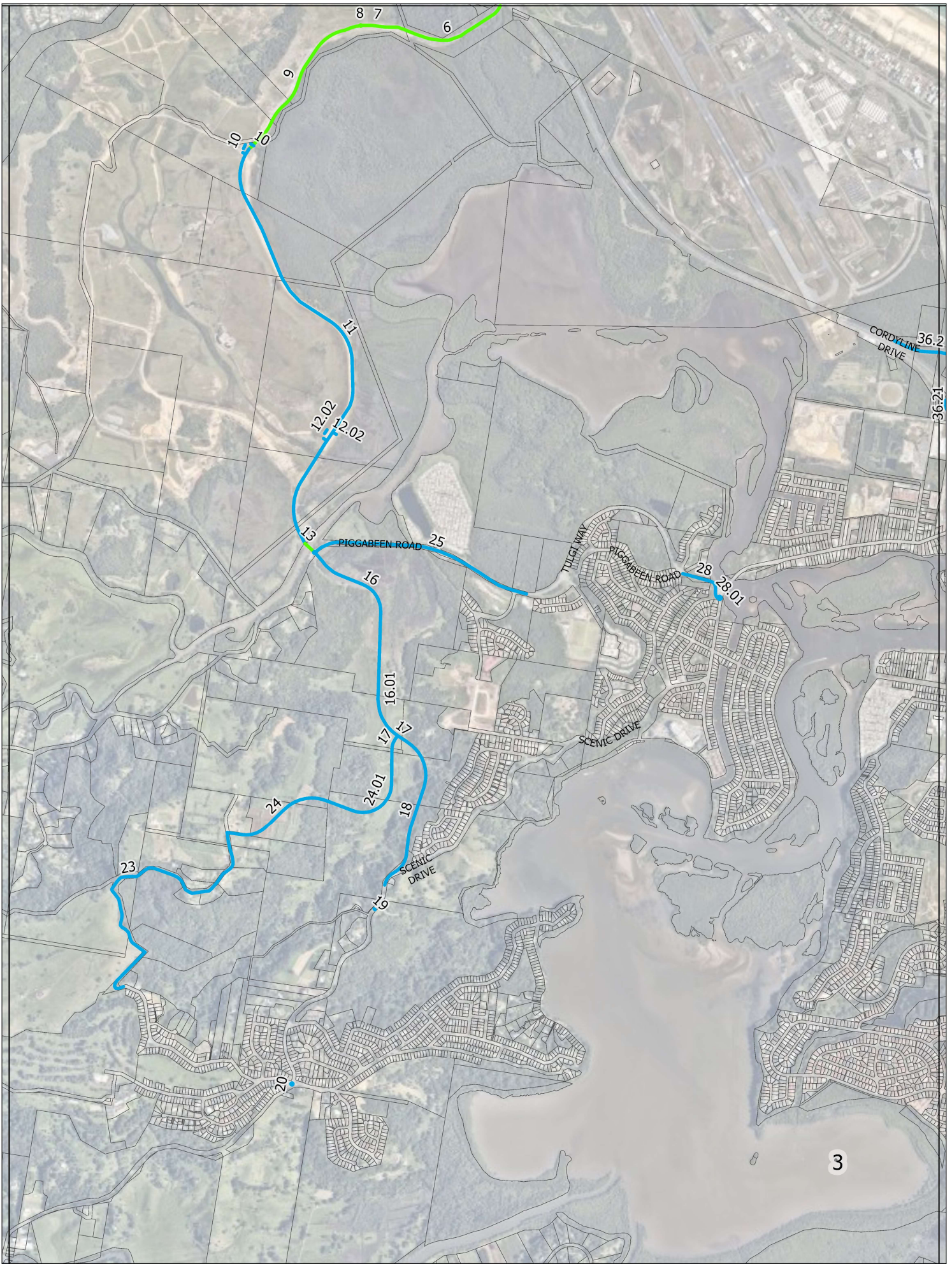


GDA2020
MGA Zone 56

0 3 km
Approx. Scale 1:115,000 @ A4 Portrait

2020 Imagery
Aerial imagery captured August 2020 by © Aerometrex.
Please note that imagery distortions may exist and objects may appear displaced from their actual position.

Date Printed: 30 August, 2024
Author: E.Walker - Infrastructure Delivery



Tweed Road Contribution Plan - Works Schedule Page 3

Tweed Road Contribution Plan 2024

- Status:
- Commenced Detailed Estimate
 - Not Started

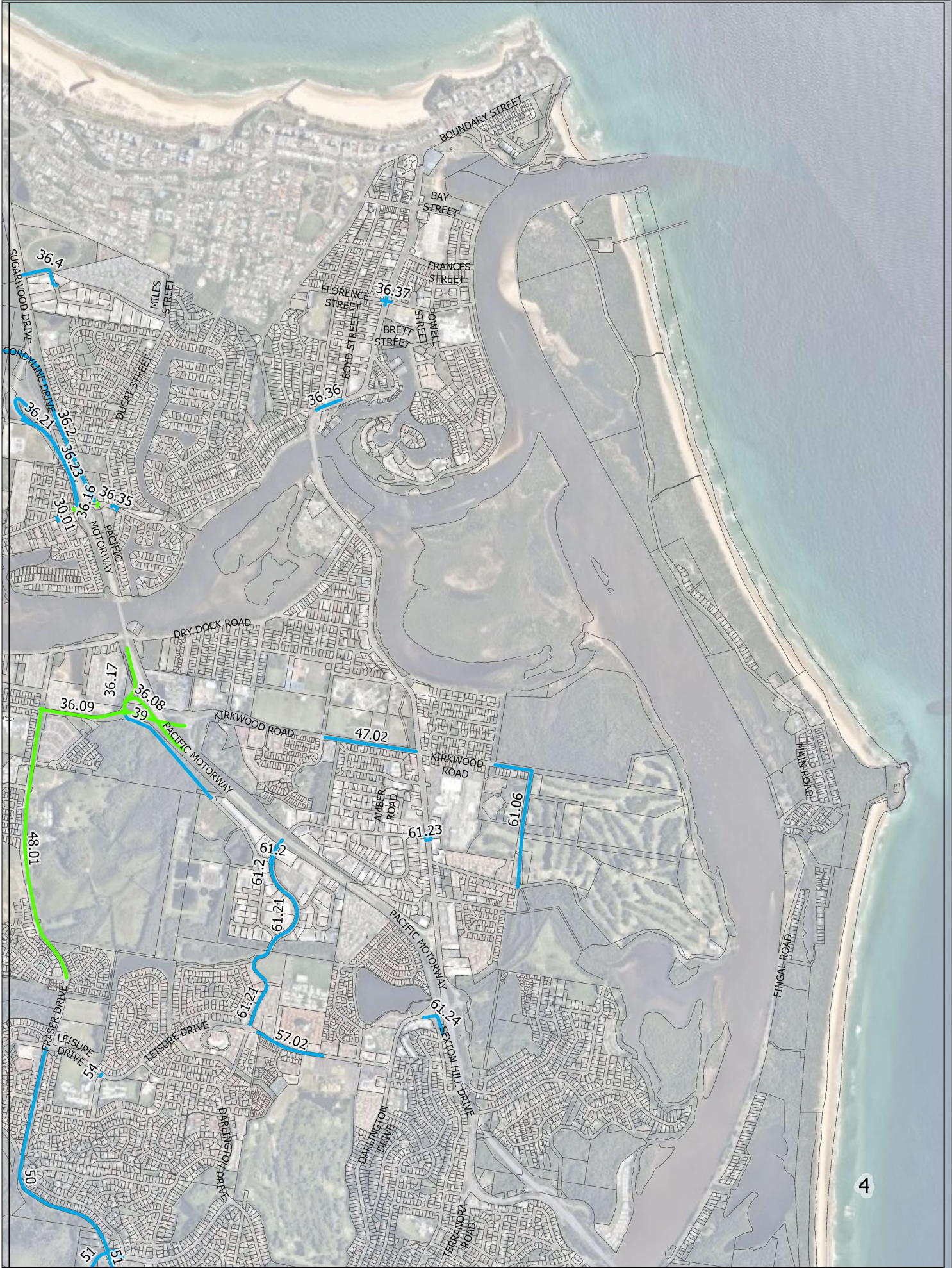
Cadastre

<p>TWEED SHIRE COUNCIL</p>	<p>Civic and Cultural Centre 3 Tumbulgum Road Murwillumbah NSW 2484</p>	<p>T (02) 6670 2400 1300 292 872 W www.tweed.nsw.gov.au E RoadsandStormwater@tweed.nsw.gov.au</p>
	<p>PO Box 816, Murwillumbah NSW 2484</p>	
	<p><small>Disclaimer: While every care is taken to ensure the accuracy of this data, Tweed Shire Council makes no representations or warranties expressed or implied, statutory or otherwise, about its accuracy, reliability, completeness or suitability for any particular purpose and disclaim all responsibility and all liability (including without limitation, liability in negligence) for all expenses, losses, damages (including indirect or consequential damage) and costs which may be incurred as a result of data being inaccurate in any way and for any reason.</small></p>	
	<p><small>2020 Imagery Aerial imagery captured August 2020 by © Aerometrex. Please note that imagery distortions may exist and objects may appear displaced from their actual position.</small></p>	



0 500 m
Approx. Scale 1:27,000 @ A4 Portrait

Date Printed: 12 February, 2025
Author: E.Walker - Infrastructure Delivery




Tweed Road Contribution Plan - Works Schedule Page 4

Tweed Road Contribution Plan 2024

- Status:
- Commenced Detailed Estimate
 - Not Started

Cadastre

	Civic and Cultural Centre 3 Tumbulgum Road Murwillumbah NSW 2484 PO Box 816, Murwillumbah NSW 2484	T (02) 6670 2400 1300 292 872 W www.tweed.nsw.gov.au E RoadsandStormwater@tweed.nsw.gov.au
---	--	--

Disclaimer: While every care is taken to ensure the accuracy of this data, Tweed Shire Council makes no representations or warranties expressed or implied, statutory or otherwise, about its accuracy, reliability, completeness or suitability for any particular purpose and disclaim all responsibility and all liability (including without limitation, liability in negligence) for all expenses, losses, damages (including indirect or consequential damage) and costs which may be incurred as a result of data being inaccurate in any way and for any reason.

N



GDA2020
MGA Zone 56

0 500 m
Approx. Scale 1:27,000 @ A4 Portrait

2020 Imagery
Aerial imagery captured August 2020 by © Aerometrex.
Please note that imagery distortions may exist and objects may appear displaced from their actual position.

Date Printed: 12 February, 2025
Author: E.Walker - Infrastructure Delivery



Tweed Road Contribution Plan - Works Schedule Page 7

Tweed Road Contribution Plan 2024

- Status:
- Commenced Detailed Estimate
 - Not Started

Cadastre

	Civic and Cultural Centre 3 Tumbulgun Road Murwillumbah NSW 2484	T (02) 6670 2400 1300 292 872 W www.tweed.nsw.gov.au E RoadsandStormwater@tweed.nsw.gov.au
	PO Box 816, Murwillumbah NSW 2484	
	<p><small>Disclaimer: While every care is taken to ensure the accuracy of this data, Tweed Shire Council makes no representations or warranties expressed or implied, statutory or otherwise, about its accuracy, reliability, completeness or suitability for any particular purpose and disclaim all responsibility and all liability (including without limitation, liability in negligence) for all expenses, losses, damages (including indirect or consequential damage) and costs which may be incurred as a result of data being inaccurate in any way and for any reason.</small></p>	
	<p style="text-align: center;">GDA2020 MGA Zone 56</p>	



0 500 m
Approx. Scale 1:27,000 @ A4 Portrait

2020 Imagery
 Aerial imagery captured August 2020 by © Aerometrex.
 Please note that imagery distortions may exist and objects may appear displaced from their actual position.

Date Printed: 12 February, 2025
 Author: E.Walker - Infrastructure Delivery



Tweed Road Contribution Plan - Works Schedule Page 8

Tweed Road Contribution Plan 2024

- Status:
- Commenced Detailed Estimate
 - Not Started

Cadastre

<p>TWEED SHIRE COUNCIL</p>	<p>Civic and Cultural Centre 3 Tumbulgun Road Murwillumbah NSW 2484</p>	<p>T (02) 6670 2400 1300 292 872 W www.tweed.nsw.gov.au E RoadsandStormwater@tweed.nsw.gov.au</p>
	<p>PO Box 816, Murwillumbah NSW 2484</p>	
	<p><small>Disclaimer: While every care is taken to ensure the accuracy of this data, Tweed Shire Council makes no representations or warranties expressed or implied, statutory or otherwise, about its accuracy, reliability, completeness or suitability for any particular purpose and disclaim all responsibility and all liability (including without limitation, liability in negligence) for all expenses, losses, damages (including indirect or consequential damage) and costs which may be incurred as a result of data being inaccurate in any way and for any reason.</small></p>	
	<p><small>© Aerometrex. Please note that imagery distortions may exist and objects may appear displaced from their actual position.</small></p>	

N

GDA2020
MGA Zone 56

0 500 m
Approx. Scale 1:27,000 @ A4 Portrait

2020 Imagery
Aerial imagery captured August 2020 by © Aerometrex.
Please note that imagery distortions may exist and objects may appear displaced from their actual position.

Date Printed: 12 February, 2025
Author: E. Walker - Infrastructure Delivery



Tweed Road Contribution Plan - Works Schedule Page 9

Tweed Road Contribution Plan 2024

Status:
— Commenced Detailed Estimate
— Not Started

Cadastre

<p>Civic and Cultural Centre 3 Tumbulgum Road Murwillumbah NSW 2484 PO Box 816, Murwillumbah NSW 2484</p>	<p>T (02) 6670 2400 1300 292 872 W www.tweed.nsw.gov.au E RoadsandStormwater@tweed.nsw.gov.au</p>
	<p><small>Disclaimer: While every care is taken to ensure the accuracy of this data, Tweed Shire Council makes no representations or warranties expressed or implied, statutory or otherwise, about its accuracy, reliability, completeness or suitability for any particular purpose and disclaim all responsibility and all liability (including without limitation, liability in negligence) for all expenses, losses, damages (including indirect or consequential damage) and costs which may be incurred as a result of data being inaccurate in any way and for any reason.</small></p>
	<p></p>
	<p></p>

0 500 m
 Approx. Scale 1:27,000 @ A4 Portrait

2020 Imagery
 Aerial imagery captured August 2020 by © Aerometrex.
 Please note that imagery distortions may exist and objects may appear displaced from their actual position.
 Date Printed: 12 February, 2025
 Author: E.Walker - Infrastructure Delivery




Tweed Road Contribution Plan - Works Schedule Page 10

Tweed Road Contribution Plan 2024

- Status:
- Commenced Detailed Estimate
 - Not Started

Cadastre

 <p>TWEED SHIRE COUNCIL</p>	<p>Civic and Cultural Centre 3 Tumbulgum Road Murwillumbah NSW 2484</p>	<p>T (02) 6670 2400 1300 292 872 W www.tweed.nsw.gov.au E RoadsandStormwater@tweed.nsw.gov.au</p>
	<p>PO Box 816, Murwillumbah NSW 2484</p>	
	<p><small>Disclaimer: While every care is taken to ensure the accuracy of this data, Tweed Shire Council makes no representations or warranties expressed or implied, statutory or otherwise, about its accuracy, reliability, completeness or suitability for any particular purpose and disclaim all responsibility and all liability (including without limitation, liability in negligence) for all expenses, losses, damages (including indirect or consequential damage) and costs which may be incurred as a result of data being inaccurate in any way and for any reason.</small></p>	
	<p><small>GDA2020 MGA Zone 56</small></p>	

N



GDA2020
MGA Zone 56

0 500 m
Approx. Scale 1:27,000 @ A4 Portrait

2020 Imagery
Aerial imagery captured August 2020 by © Aerometrex.
Please note that imagery distortions may exist and objects may appear displaced from their actual position.

Date Printed: 12 February, 2025
Author: E.Walker - Infrastructure Delivery



Tweed Road Contribution Plan - Works Schedule Page 12

Tweed Road Contribution Plan 2024

Status:

- Commenced Detailed Estimate
- Not Started

Cadastre



Civic and Cultural Centre
 3 Tumbulgun Road
 Murwillumbah NSW 2484
 PO Box 816, Murwillumbah NSW 2484

T | (02) 6670 2400 | 1300 292 872
 W | www.tweed.nsw.gov.au
 E | RoadsandStormwater@tweed.nsw.gov.au

Disclaimer: While every care is taken to ensure the accuracy of this data, Tweed Shire Council makes no representations or warranties expressed or implied, statutory or otherwise, about its accuracy, reliability, completeness or suitability for any particular purpose and disclaim all responsibility and all liability (including without limitation, liability in negligence) for all expenses, losses, damages (including indirect or consequential damage) and costs which may be incurred as a result of data being inaccurate in any way and for any reason.



GDA2020
 MGA Zone 56

0 500 m

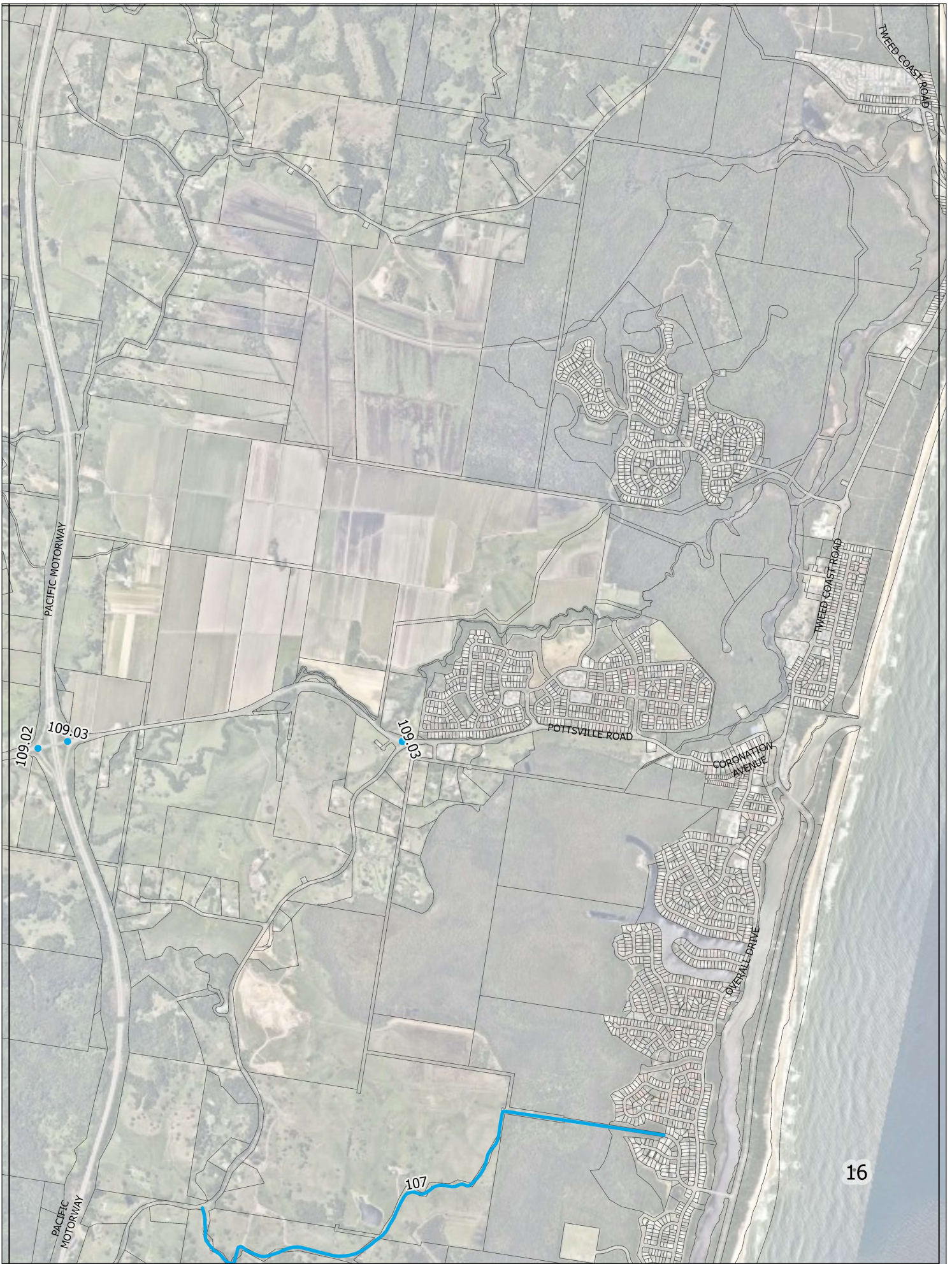
Approx. Scale 1:27,000 @ A4 Portrait

2020 Imagery

Aerial imagery captured August 2020 by © Aerometrex. Please note that imagery distortions may exist and objects may appear displaced from their actual position.

Date Printed: 12 February, 2025

Author: E. Walker - Infrastructure Delivery



Tweed Road Contribution Plan - Works Schedule Page 16

Tweed Road Contribution Plan 2024

- Status:
- Commenced Detailed Estimate
 - Not Started

Cadastre

Civic and Cultural Centre
 3 Tumbulghum Road
 Murwillumbah NSW 2484
TWEED SHIRE COUNCIL
 PO Box 816, Murwillumbah NSW 2484

T | (02) 6670 2400 | 1300 292 872
 W | www.tweed.nsw.gov.au
 E | RoadsandStormwater@tweed.nsw.gov.au

Disclaimer: While every care is taken to ensure the accuracy of this data, Tweed Shire Council makes no representations or warranties expressed or implied, statutory or otherwise, about its accuracy, reliability, completeness or suitability for any particular purpose and disclaim all responsibility and all liability (including without limitation, liability in negligence) for all expenses, losses, damages (including indirect or consequential damage) and costs which may be incurred as a result of data being inaccurate in any way and for any reason.

N

GDA2020
MGA Zone 56

0 500 m
Approx. Scale 1:27,000 @ A4 Portrait

2020 Imagery
 Aerial imagery captured August 2020 by © Aerometrex.
 Please note that imagery distortions may exist and objects may appear displaced from their actual position.

Date Printed: 12 February, 2025
 Author: E.Walker - Infrastructure Delivery