

LEGEND

ARI 100 Year (AEP 1%) Flood

Flood Velocity Depth Product - Contours ≤ 0.3 and > 0.3

- ≤ 0.3
- > 0.3

$v \times d < 0.3$ = "Low Flow Area"

$v \times d > 0.3$ = "High Flow Area"

ARI = Average Recurrence Interval

AEP= Annual Exceedance Probability

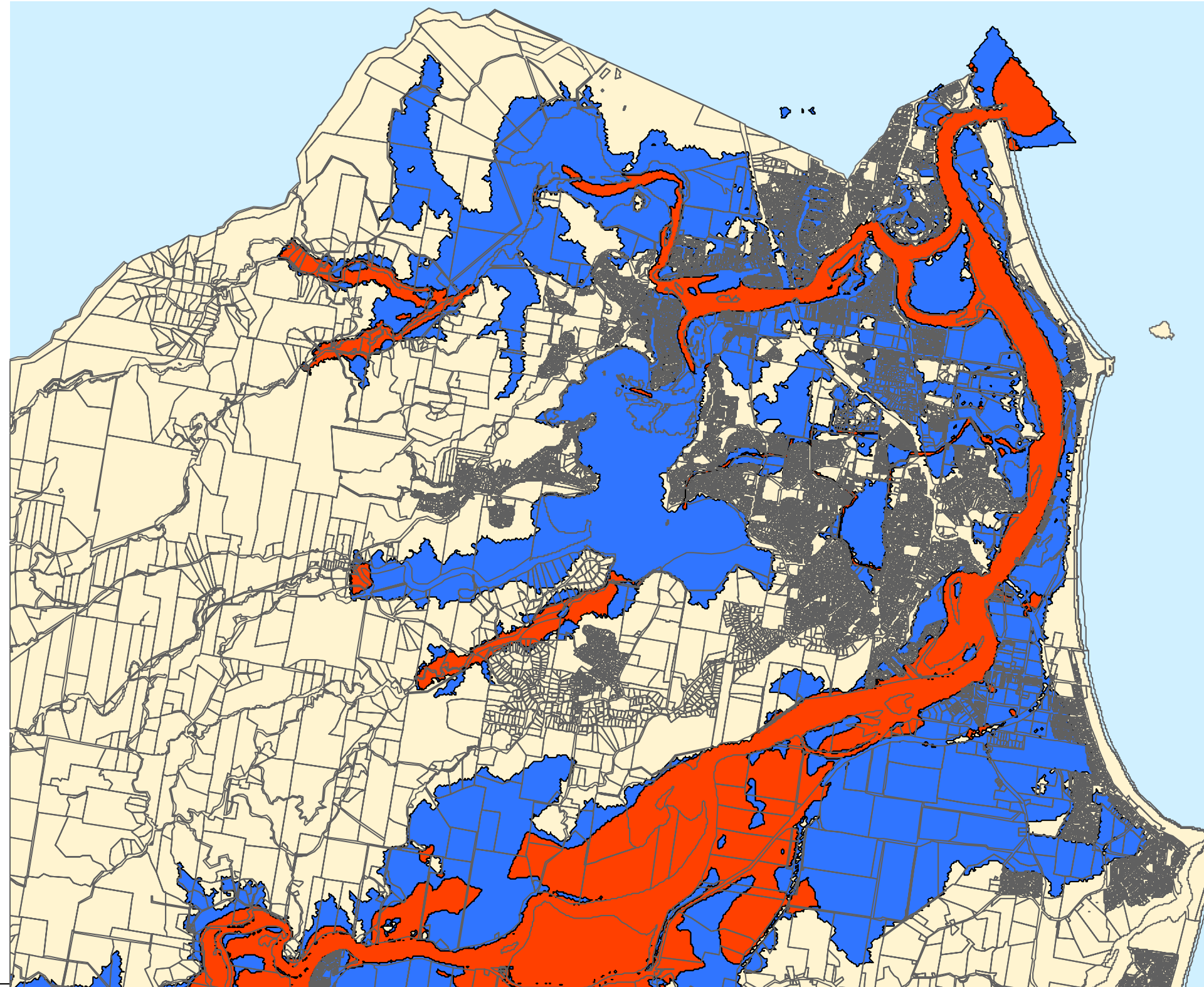


FIGURE 1. - LOWER TWEED

Disclaimer

While every care is taken to ensure the accuracy of this data, Tweed Shire Council makes no representations or warranties expressed or implied, statutory or otherwise, about its accuracy, reliability, completeness or suitability for any particular purpose and disclaim all responsibility and all liability (including without limitation, liability in negligence) for all expenses, losses, damages (including indirect or consequential damage) and costs which may be incurred as a result of data being inaccurate in any way and for any reason. This information is supplied for the general guidance and is to be considered indicative and diagrammatic only. It should not be used for survey or construction purposes and prior to any excavations a "Dial before You Dig" enquiry must be made by calling 1100. The information contained on this document remains valid for 30 days only from the date of supply.

TWEED SHIRE COUNCIL
Tweed Valley Floodplain Risk Management Study 2005
Part 2 - Planning Controls for High Flow Areas

Date of Issue: 20/6/2006



LEGEND

ARI 100 Year (AEP 1%) Flood

Flood Velocity Depth Product - Contours ≤ 0.3 and > 0.3

- ≤ 0.3
- > 0.3

$v \times d < 0.3$ = "Low Flow Area"
 $v \times d > 0.3$ = "High Flow Area"

ARI = Average Recurrence Interval
AEP= Annual Exceedance Probability

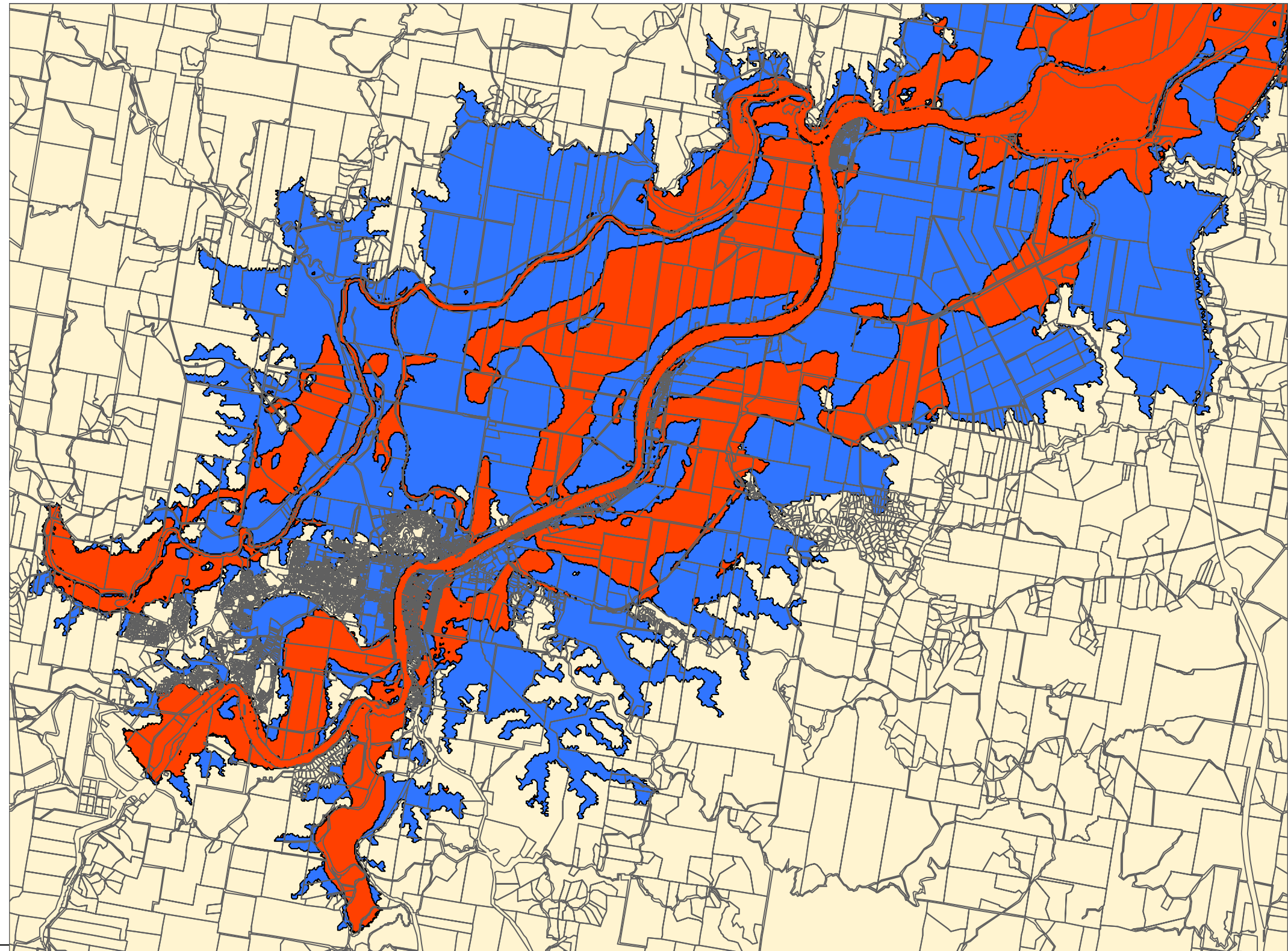


FIGURE 2. - UPPER TWEED

Disclaimer

While every care is taken to ensure the accuracy of this data, Tweed Shire Council makes no representations or warranties expressed or implied, statutory or otherwise, about its accuracy, reliability, completeness or suitability for any particular purpose and disclaim all responsibility and all liability (including without limitation, liability in negligence) for all expenses, losses, damages (including indirect or consequential damage) and costs which may be incurred as a result of data being inaccurate in any way and for any reason. This information is supplied for the general guidance and is to be considered indicative and diagrammatic only. It should not be used for survey or construction purposes and prior to any excavations a "Dial before You Dig" enquiry must be made by calling 1100. The information contained on this document remains valid for 30 days only from the date of supply.

TWEED SHIRE COUNCIL
Tweed Valley Floodplain Risk Management Study 2005
Part 2 - Planning Controls for High Flow Areas

Date of Issue: 20/6/2006



LEGEND

ARI 100 Year (AEP 1%) Flood

Flood Velocity Depth Product - Contours ≤ 0.3 and > 0.3

- ≤ 0.3
- > 0.3

$v \times d < 0.3$ = "Low Flow Area"

$v \times d > 0.3$ = "High Flow Area"

ARI = Average Recurrence Interval
AEP= Annual Exceedance Probability

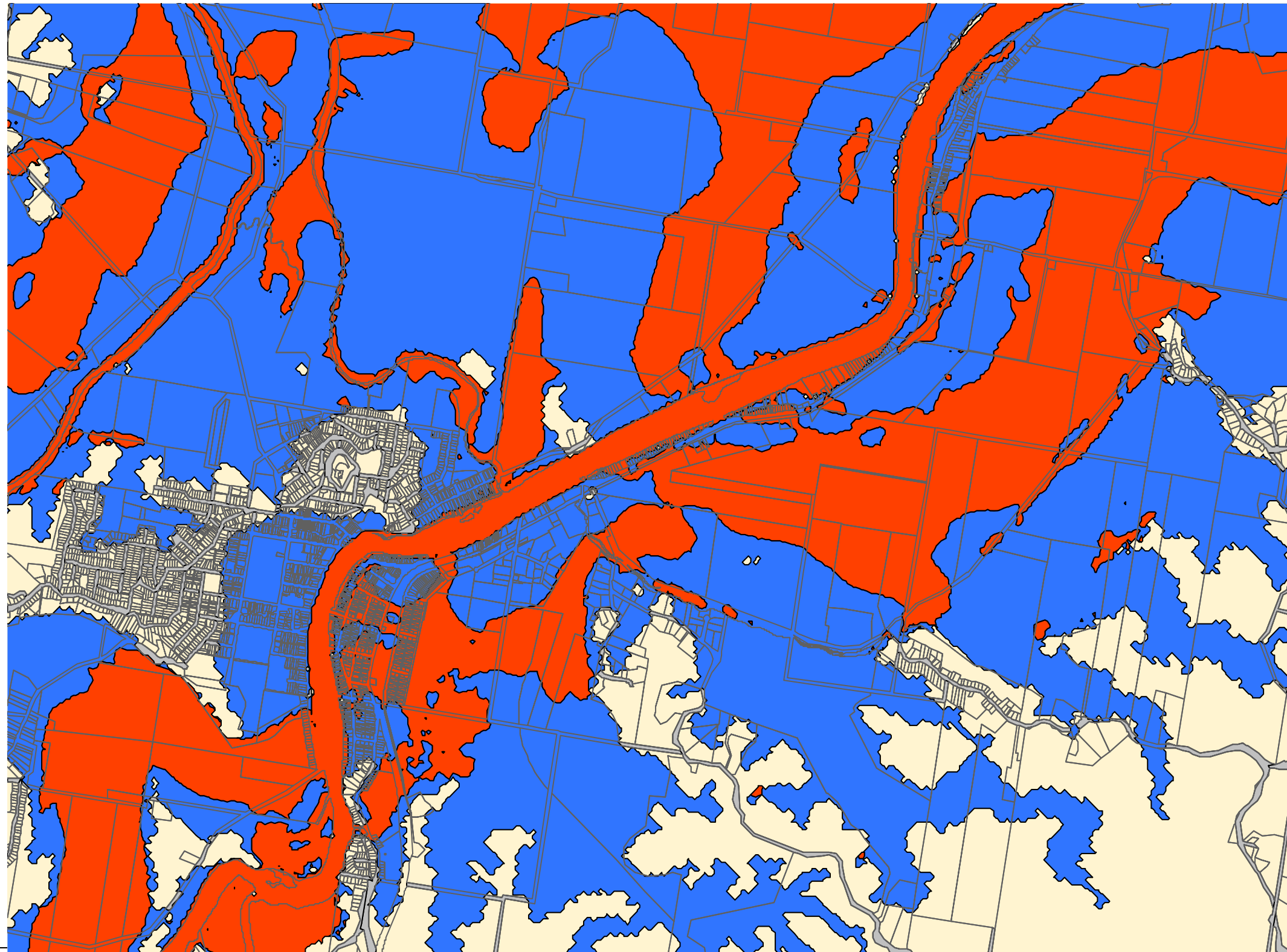


FIGURE 3. - MURWILLUMBAH SOUTH & TWEED VALLEY WAY

Disclaimer

While every care is taken to ensure the accuracy of this data, Tweed Shire Council makes no representations or warranties expressed or implied, statutory or otherwise, about its accuracy, reliability, completeness or suitability for any particular purpose and disclaim all responsibility and all liability (including without limitation, liability in negligence) for all expenses, losses, damages (including indirect or consequential damage) and costs which may be incurred as a result of data being inaccurate in any way and for any reason. This information is supplied for the general guidance and is to be considered indicative and diagrammatic only. It should not be used for survey or construction purposes and prior to any excavations a "Dial before You Dig" enquiry must be made by calling 1100. The information contained on this document remains valid for 30 days only from the date of supply.

TWEED SHIRE COUNCIL
Tweed Valley Floodplain Risk Management Study 2005
Part 2 - Planning Controls for High Flow Areas

Date of Issue: 20/6/2006



LEGEND

ARI 100 Year (AEP 1%) Flood

Flood Velocity Depth Product - Contours ≤ 0.3 and > 0.3

- ≤ 0.3
- > 0.3

$v \times d < 0.3$ = "Low Flow Area"

$v \times d > 0.3$ = "High Flow Area"

ARI = Average Recurrence Interval
AEP= Annual Exceedance Probability

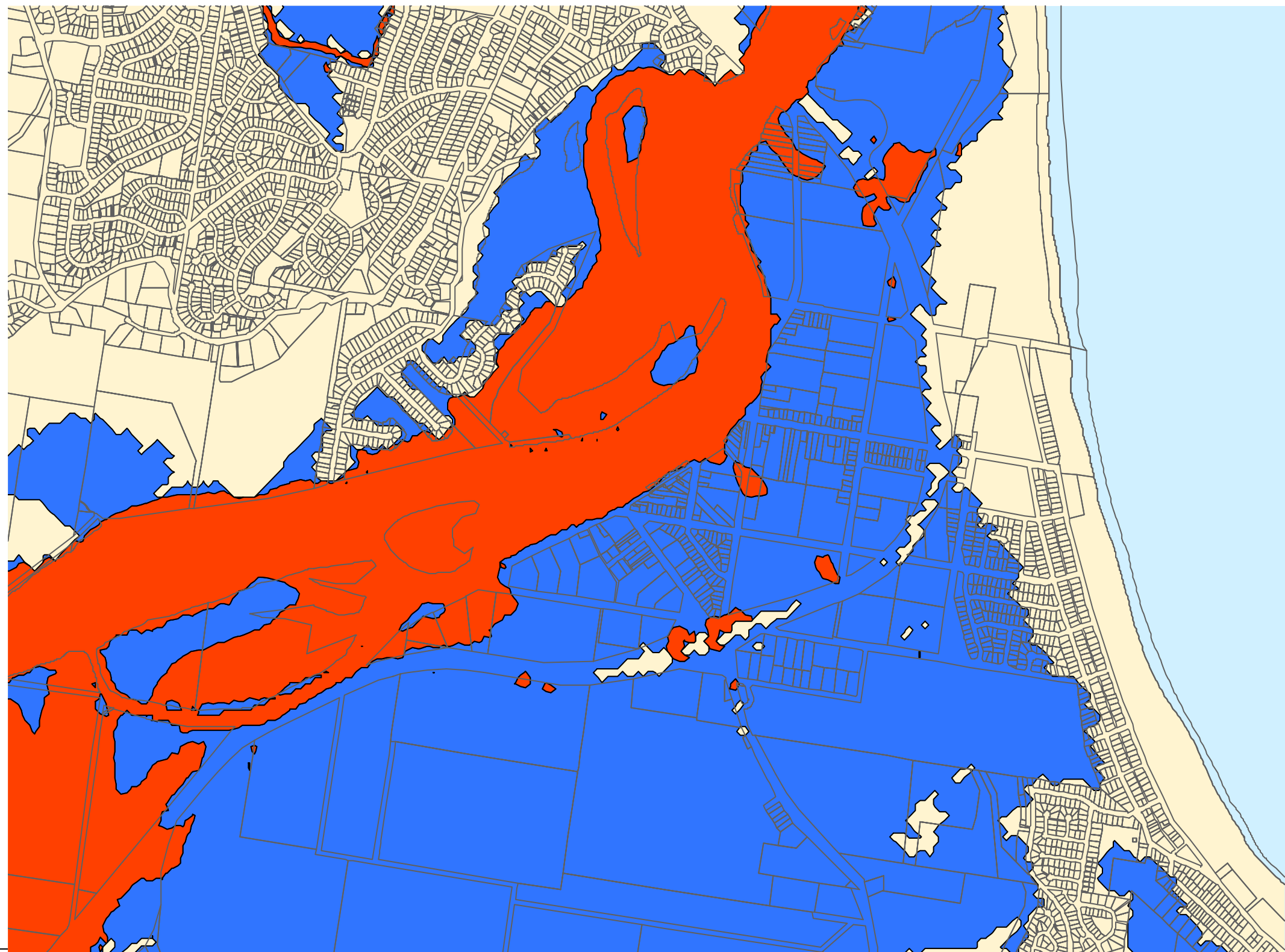


FIGURE 4. - CHINDERAH

Disclaimer

While every care is taken to ensure the accuracy of this data, Tweed Shire Council makes no representations or warranties expressed or implied, statutory or otherwise, about its accuracy, reliability, completeness or suitability for any particular purpose and disclaim all responsibility and all liability (including without limitation, liability in negligence) for all expenses, losses, damages (including indirect or consequential damage) and costs which may be incurred as a result of data being inaccurate in any way and for any reason. This information is supplied for the general guidance and is to be considered indicative and diagrammatic only. It should not be used for survey or construction purposes and prior to any excavations a "Dial before You Dig" enquiry must be made by calling 1100. The information contained on this document remains valid for 30 days only from the date of supply.

TWEED SHIRE COUNCIL
Tweed Valley Floodplain Risk Management Study 2005
Part 2 - Planning Controls for High Flow Areas

Date of Issue: 20/6/2006

