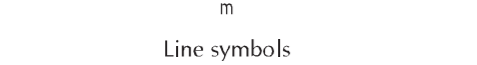


MAP OF Lower Tweed River and Cudgen Creek



Line symbols: --- Structure, - - - - - Outer Lake

Restricted Waters: 4 Knot Zone, 8 Knot Zone, No Skating or Aquaplaning

- Navigation Aids**
- Special Light Beacon
 - Standard Light Beacon
 - Port Light Beacon
 - Starboard Light Beacon
 - Red Buoy
 - Green Buoy
 - Yellow Buoy
 - White Buoy
 - Black Buoy
 - Red Buoy with Top Mark
 - Green Buoy with Top Mark
 - Yellow Buoy with Top Mark
 - White Buoy with Top Mark
 - Black Buoy with Top Mark
 - Red Buoy with Top Mark and Buoyage
 - Green Buoy with Top Mark and Buoyage
 - Yellow Buoy with Top Mark and Buoyage
 - White Buoy with Top Mark and Buoyage
 - Black Buoy with Top Mark and Buoyage

- Restricted Activities and Cautions**
- Dangerous Area
 - No Skating or Aquaplaning Zone
 - No Wash Zone
 - No Towing or Pushing
 - No Anchoring
 - No Power Craft
 - No Skating or Aquaplaning
 - No Diving
 - No Fishing
 - No Swimming
 - No Boating
 - No Camping
 - No Picnicking
 - No Drunken Boating
 - No Drunken Swimming
 - No Drunken Fishing
 - No Drunken Boating
 - No Drunken Swimming
 - No Drunken Fishing

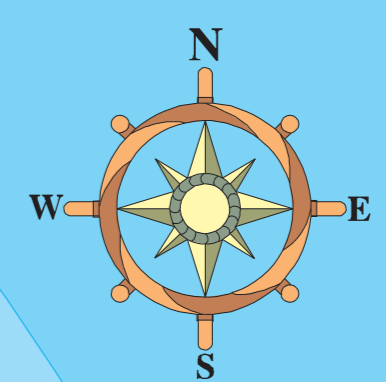
- Boating Facilities**
- Boat Ramp
 - Boat Lift
 - Boat Storage
 - Boat Wash
 - Boat Repair
 - Boat Sales
 - Boat Hire
 - Boat Rental
 - Boat Maintenance
 - Boat Insurance
 - Boat Registration
 - Boat Titling
 - Boat Safety
 - Boat Training
 - Boat Examinations
 - Boat Licenses
 - Boat Certificates
 - Boat Documents
 - Boat Records
 - Boat Archives
 - Boat Libraries
 - Boat Museums
 - Boat Galleries
 - Boat Exhibitions
 - Boat Shows
 - Boat Festivals
 - Boat Regattas
 - Boat Races
 - Boat Competitions
 - Boat Events
 - Boat Activities
 - Boat Clubs
 - Boat Societies
 - Boat Associations
 - Boat Unions
 - Boat Guilds
 - Boat Orders
 - Boat Chapters
 - Boat Branches
 - Boat Sections
 - Boat Divisions
 - Boat Districts
 - Boat Regions
 - Boat Territories
 - Boat Provinces
 - Boat States
 - Boat Countries
 - Boat Continents
 - Boat Worlds

- General Information**
- Public Toilet
 - Public Phone
 - Public Office
 - Public Transport
 - Public Accommodation
 - Public Services
 - Public Facilities
 - Public Amenities
 - Public Buildings
 - Public Works
 - Public Utilities
 - Public Safety
 - Public Health
 - Public Education
 - Public Recreation
 - Public Entertainment
 - Public Information
 - Public Communication
 - Public Transportation
 - Public Infrastructure
 - Public Services
 - Public Amenities
 - Public Buildings
 - Public Works
 - Public Utilities
 - Public Safety
 - Public Health
 - Public Education
 - Public Recreation
 - Public Entertainment
 - Public Information
 - Public Communication
 - Public Transportation
 - Public Infrastructure



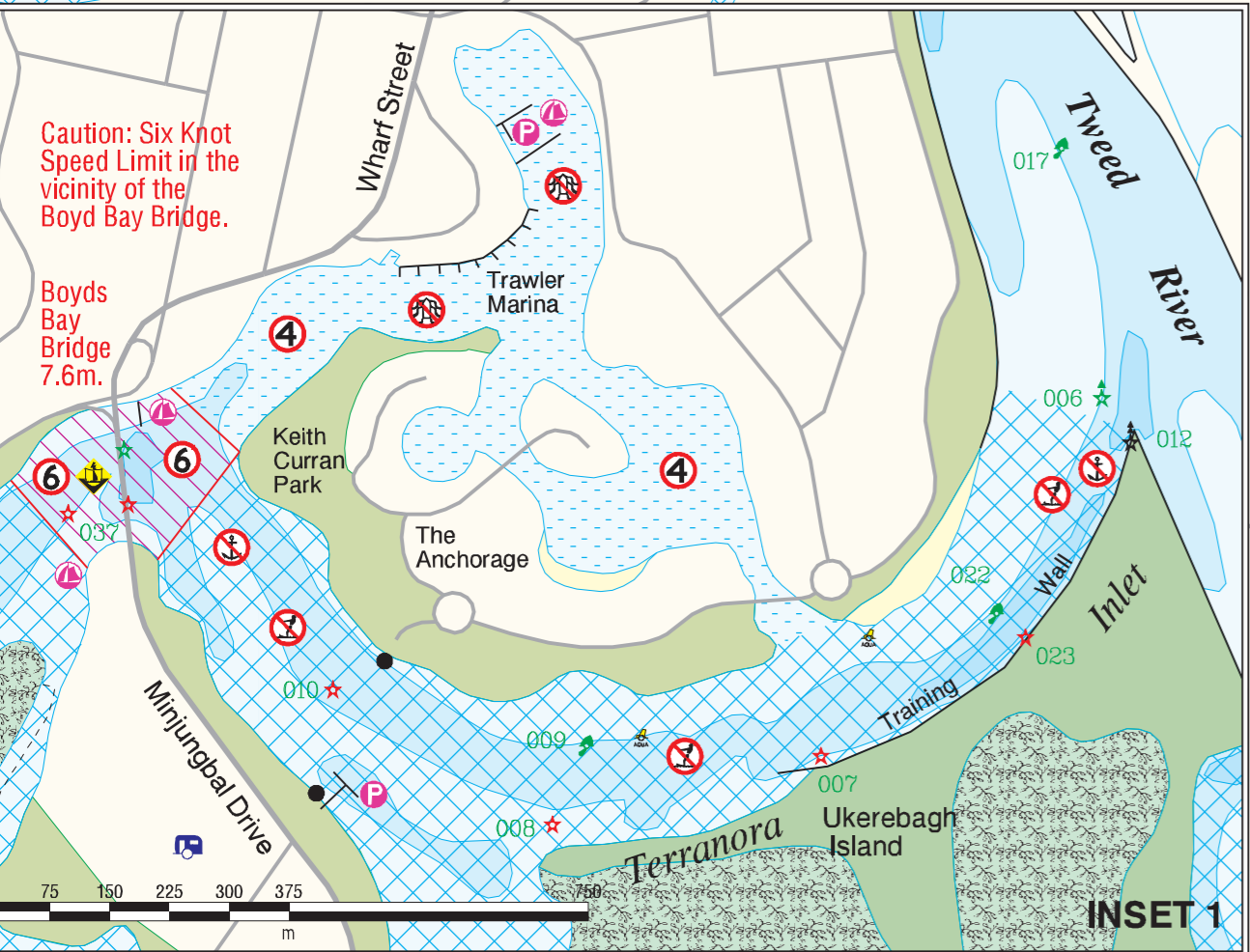
DISCLAIMER! This map is not intended to be used for navigational purposes and NSW Maritime takes no responsibility for the accuracy of the content herein. Map Printed: September 2006. Copyright NSW Maritime. The local office of NSW Maritime is situated at: Shop 8, Tweed City Arcade, 69 Wharf Street, Tweed Heads NSW 2485. Telephone: (07)5536 1001.

Note: General Information such as caravan parks, hotels motels, picnic grounds and public toilets etc. are indicated as a guide only. Not all can be shown in some areas. Note: Some navigation aids shown on this map exhibit a 3 digit identifying number. Please use this number to report faulty navigaids or your position in an emergency. Note: Lit navigaids exhibit standard flash patterns, unless otherwise indicated.



SEE ALSO NAUTICAL CHART AUS. 220, NSW Maritime Coastal Boating Map No.1 or Maritime Safety Queensland Beacon to Beacon Directory for further information.

WARNING: The entrance should only be navigated by those possessing expert local knowledge due to the constantly changing bar conditions. Vessels should not attempt to enter on an ebb tide. NOTE: It is compulsory to carry certain safety equipment, including a lifejacket Type 1 for all on board, whilst navigating in the open sea. It is also compulsory that lifejackets be worn while crossing all entrance bars shown on this map. Further information on what you should carry can be found in the NSW Maritime Safe Boating Handbook available from contact options shown on the map cover. CAUTION: No anchoring or diving in the navigable channels of Tweed River, Terranora Inlet and Terranora Creek. No irregular riding or wave jumping of PWC in the entrance area. WARNING: Bomboras can break at any time at various locations along the coast. Extreme caution should be exercised whilst navigating in the vicinity of any bombora, shoal or reef. Danger Reefs lie in an easterly direction off Fingal Head and Cook Island.



INSET 1

Note: Global Positioning System check point as shown by GPS* is in WGS 84 co-ordinates to an accuracy of +/- 5 metres. Equipment should be checked against this point to determine any gross errors prior to any seaward journey. Depending on equipment, errors of up to 100 metres is not uncommon.

Caution: Depth contours have been compiled from NSW Dept. Commerce and Tweed River Entrance Sand Bypassing Project surveys and are indicative only. They can change over time.

Note: A speed limit of 4 knots must be observed when within 100 metres of any dredge, floating plant, ferry or punt working with chains and wires.

Caution: Dredging operations may occur in this area.

Caution: Six Knot Speed Limit in the vicinity of the Boyd Bay Bridge. Boyd's Bay Bridge 7.6m.

Caution: All canal estates are FOUR KNOT ZONES. Note: NO WASH ZONES exist in various areas. Note: Bridge clearance heights shown in RED are in metres above mean high water. No skiing or aquaplaning in the vicinity of any bridge.

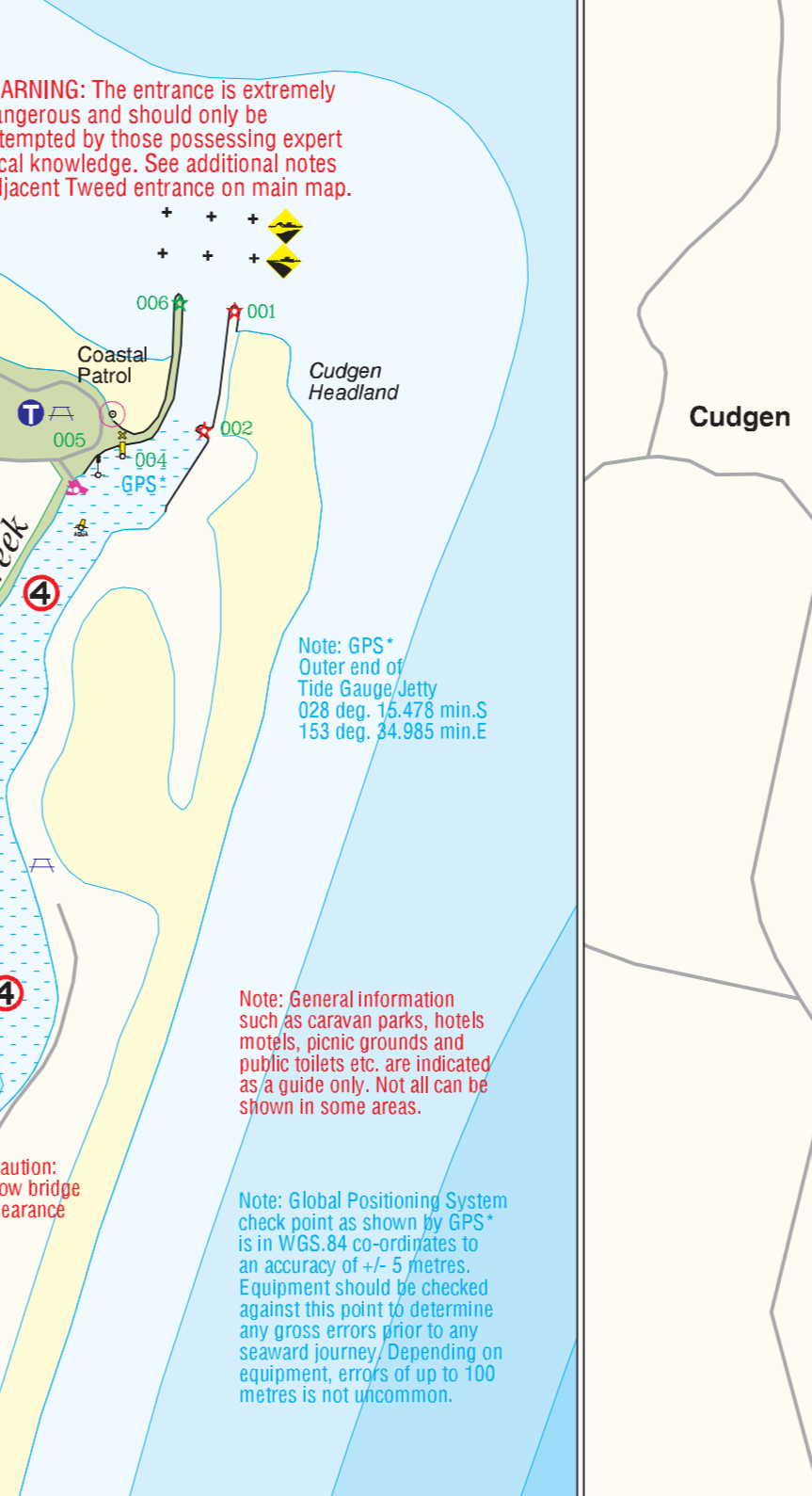
WARNING: OVERHEAD AND SUBMARINE CABLES AND PIPES CROSS THESE WATERWAYS AT VARIOUS LOCATIONS AND ARE USUALLY INDICATED BY WARNING NOTICES ON THE SHORE. CAUTION SHOULD BE EXERCISED AT ALL TIMES WHILE NAVIGATING IN THE VICINITY OF THESE CROSSINGS.

Caution: Rowers use these waterways. Be careful of your wash.

Note: GPS* North East corner Fingal Pointon Jetty 028 deg. 12.080 min. S 153 deg. 33.837 min. E

Note: GPS* Outer end of Tide Gauge Jetty 028 deg. 16.478 min. S 153 deg. 34.985 min. E

INSET 2



INSET 2

Cudgen Creek 1 km. SEE INSET 2.

WARNING: The entrance is extremely dangerous and should only be attempted by those possessing expert local knowledge. See additional notes adjacent Tweed entrance on main map.

Note: General Information such as caravan parks, hotels motels, picnic grounds and public toilets etc. are indicated as a guide only. Not all can be shown in some areas.

Note: Global Positioning System check point as shown by GPS* is in WGS 84 co-ordinates to an accuracy of +/- 5 metres. Equipment should be checked against this point to determine any gross errors prior to any seaward journey. Depending on equipment, errors of up to 100 metres is not uncommon.

Caution: Low bridge clearance.

Note: Cudgen Creek is very shallow and is generally navigable to Cudgen Lake for small craft at high water only. Note: No powered vessels allowed on Cudgen Lake.

CORAL SEA

