



**TWEED**  
SHIRE COUNCIL

# Tweed Coast Koala Study 2018



# Background

Tweed Coast  
Koala Habitat  
Study (2011)



Tweed Coast  
Koala Plan of  
Management  
(2015)



Development assessment



Strategic planning



Habitat restoration



Road mortality



Dog attack



Fire management



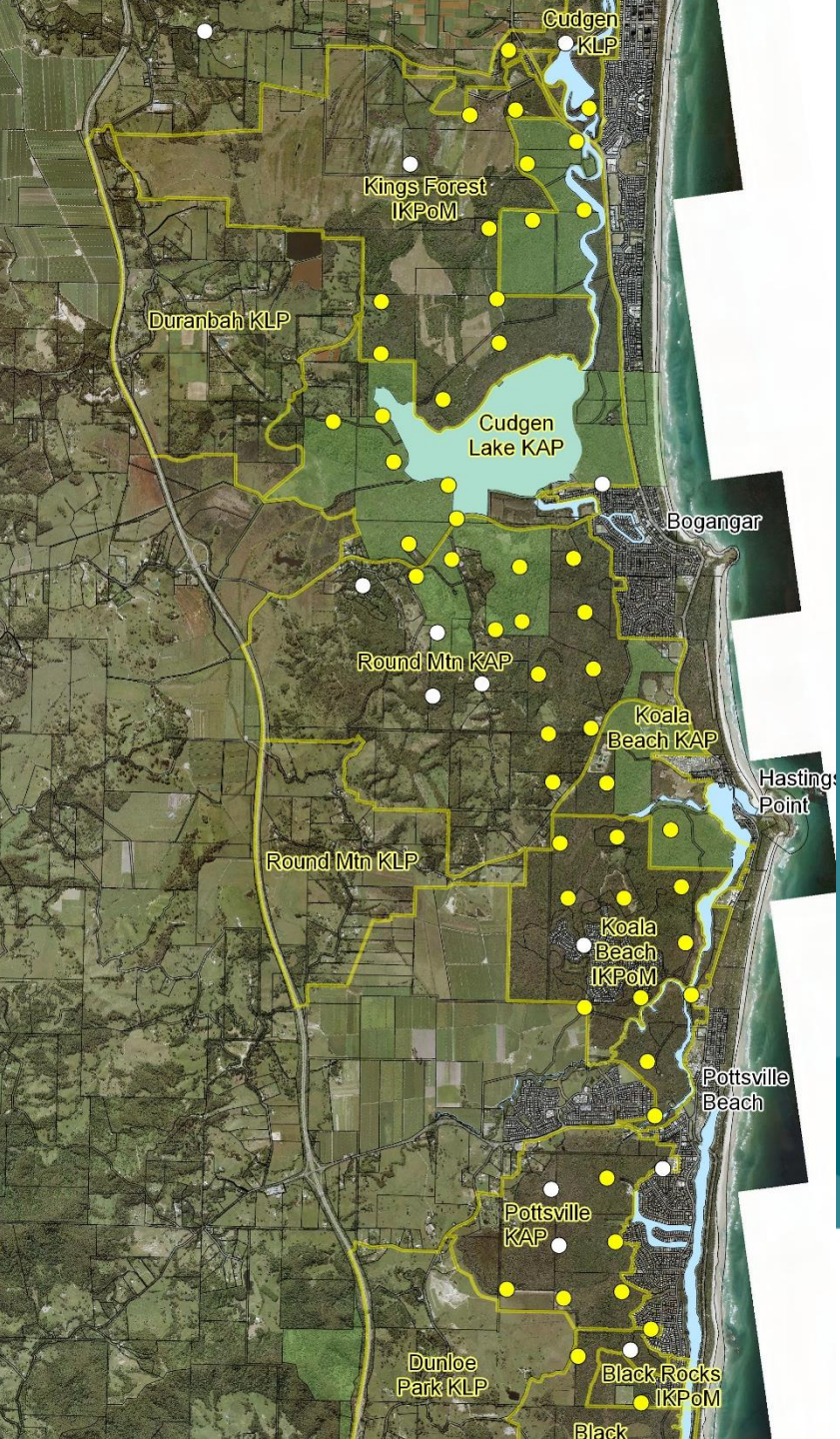
Koala care and welfare



Community awareness  
and engagement



Monitoring reporting and  
review



- 69 field sites
  - 24 Private land
  - 25 Council-managed land
  - 20 Nature Reserve
- Methods identical to those applied in 2010 and 2015 Koala Habitat Studies
- **Spot Assessment Technique**
  - Measures koala activity levels
  - Not dependent on sightings of koalas
  - Standard approach used throughout eastern Australia (Phillips & Callaghan 2011)



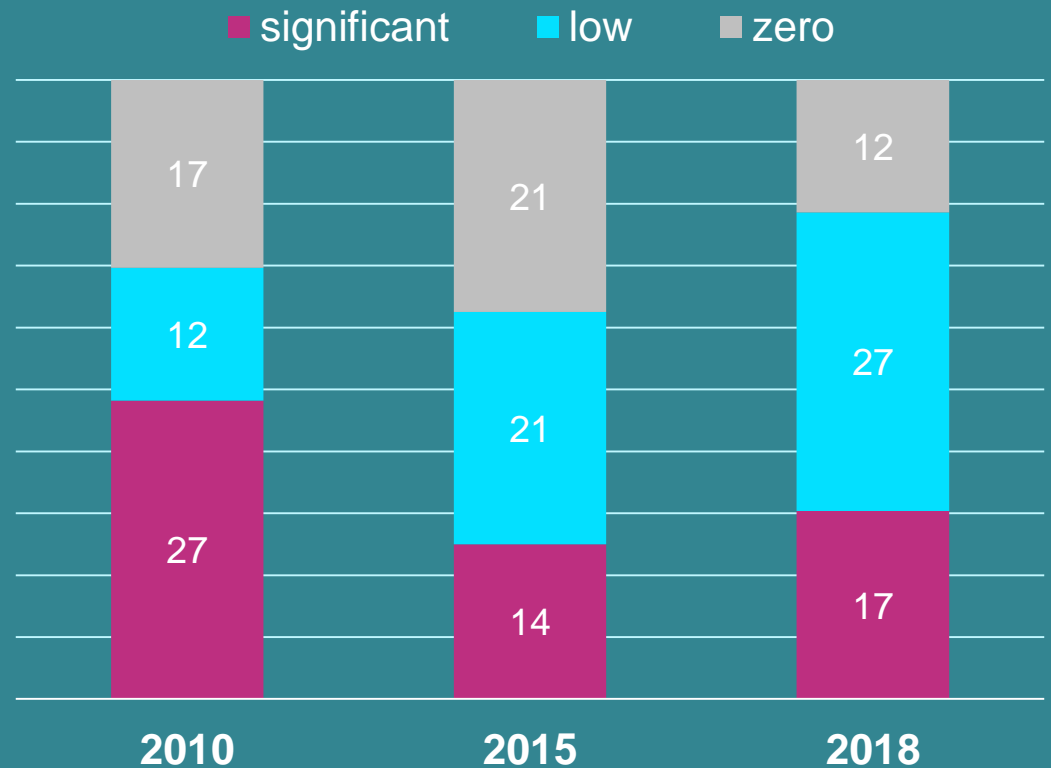


## 69 field sites sampled in 2018

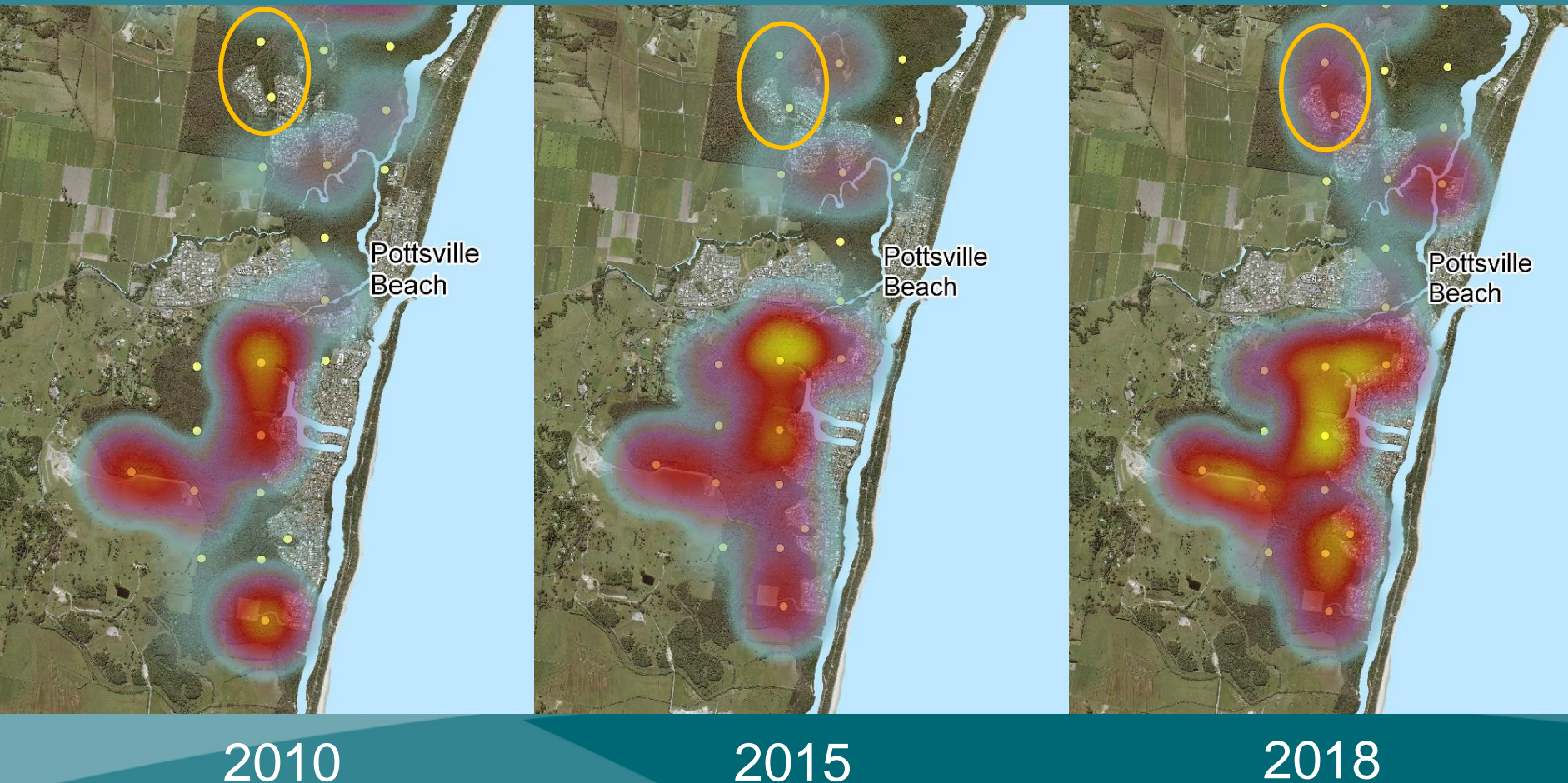
- 75% active
- 35% significant use

## 15 koalas sighted

- Mostly healthy
- Including breeding females



# Koala Beach – Black Rocks





# Kings Forest – Koala Beach







# Koala sightings

Sources: Friends of the Koala Inc, Atlas of Living Australia, Council officers, community members

- ~470 koala sightings reported since Sep 2015
- 100% increase in sightings since last report
- Community engagement win!



- [www.tweed.nsw.gov.au/koalas](http://www.tweed.nsw.gov.au/koalas)

## The future

- Cautiously optimistic – results indicate beginnings of recovery or ‘normal’ fluctuation?
- This year’s results encourage persistence, but we’re still a long way from being out of the woods yet
- Recovery is still a long-term goal
- Highlights the value of long-term monitoring

