

**NOVEMBER 2021**  
**FOX MONITORING AND CONTROL PROGRAM**  
**KOALA BEACH AND SOUTHERN TWEED COAST**



**SUMMARY REPORT**

**NOVEMBER 2021**  
**FOX MONITORING AND CONTROL PROGRAM**  
**KOALA BEACH AND SOUTHERN TWEED COAST**

**Project Team:**

David Charley, Wildsearch Environmental Services  
(Monitoring, 1080 baiting program, reporting & mapping)  
Emily Clarke and Pamela Gray – Tweed Shire Council  
(Project management)

**SUMMARY REPORT**

**WILDSEARCH ENVIRONMENTAL SERVICES**

© Wildsearch Environmental Services (ABN 23 711 980 662) 2021

Ph: 0448 865 308 [dcharley@optusnet.com.au](mailto:dcharley@optusnet.com.au)

**Disclaimer**

This report has been prepared in accordance with the scope of services described in the contract or agreement between Wildsearch Environmental Services (ABN 23 711 980 662) and Tweed Shire Council. The report relies upon data, surveys, measurements and results taken at or under the particular times and conditions specified herein. Any findings, conclusions or recommendations only apply to the aforementioned circumstances and no greater reliance should be assumed or drawn by Tweed Shire Council. Furthermore, the report has been prepared solely for use by Tweed Shire Council and Wildsearch Environmental Services accept no responsibility for its use by other parties.

## Table of Contents

Report Summary.....	1
1.0 Introduction.....	2
2.0 Location of Project Area .....	2
3.0 Methods .....	2
3.1 Camera Monitoring.....	2
3.2 Concurrent Camera Monitoring Programs - Tweed Shire Council .....	4
3.3 1080 Baiting Program .....	5
4.0 Results .....	7
4.1 Camera Monitoring Results .....	7
4.2 1080 Baiting Program .....	10
5.0 Discussion .....	13
6.0 Recommendations:.....	14
Appendix A: Photographs .....	15
Appendix B: Camera Monitoring Results .....	17

## Report Summary

Tweed Shire Council (Council) conducts monitoring of vertebrate predators and native fauna on many of the reserves and coastal bushland areas along the Tweed Coast as part of the NSW Fox Threat Abatement Plan (Fox TAP), to meet Council's biosecurity obligations and to support and implement identified threatened species recovery actions.

Fox and other vertebrate pest activity was monitored for the May to November 2021 period using Five "heat in motion" cameras. The images from each camera were downloaded on a weekly basis during the baiting period and on a fortnightly basis during non-baiting periods. The number of individual predators was recorded along with other incidental records such as threatened species observations.

The results of the camera monitoring program indicated that there was a population of foxes across the project area. The monitoring determined that there was a need to establish a control program using 1080 baits if local breeding populations of Threatened species were to be protected and the impact of these foxes was to be reduced. Wild dogs were generally absent and had not been recorded during the preceding months.

Baiting was conducted over a fourteen-week period and focussed on areas with significant fox activity. Seventeen bait-stations were established as part of the overall Tweed Coast 1080 baiting program. For this project area two were along the western parts of Kelleher's Road, Pottsville Wetlands and one at Cudgera Creek Bushland Reserve. Foxes took at least 32 baits across the project area, including Cudgera Creek and Pottsville Wetlands. A further 83 baits were taken by unknown (unconfirmed) animals but a number of these may have been taken by foxes. Camera monitoring determined that some were taken by Lace Monitors. In total 116 baits (65%) were taken across the project area. A wild dog took one bait at Cudgera Creek Bushland Reserve. No other wild dogs were recorded.

The 1080 baiting program proved to be highly effective with fox numbers significantly reduced. On-going camera monitoring showed fox activity declined after the baiting program had concluded.

## 1.0 Introduction

Wildsearch Environmental Services has been contracted by Tweed Shire Council (Council) to undertake a fox monitoring and control program on selected properties along the southern Tweed Coast. This program was conducted on strategic private lands and land owned and managed by Council within a 5-kilometre buffer zone around the Koala Beach Estate, Pottsville. The intent of the program was to meet statutory obligations on all landowners to control pests on their lands and, in this case, to protect important breeding populations of the Bush Stone-curlew and other ground nesting birds, the Koala and Common Planigale.

This report summarises the results of the camera monitoring and 1080 fox control program for the period 26 February 2021 – 4 November 2021.

## 2.0 Location of Project Area

The program took place on four private properties and two parcels of land managed by Council (see **Figure 1**). All sites were between Round Mountain in the north and the cane fields to the west of Pottsville in the south. All sites were east of the Pacific Motorway. In addition, monitoring was also conducted on Cudgera Creek Bushland Reserve and Pottsville Wetlands. This has been reported upon separately.

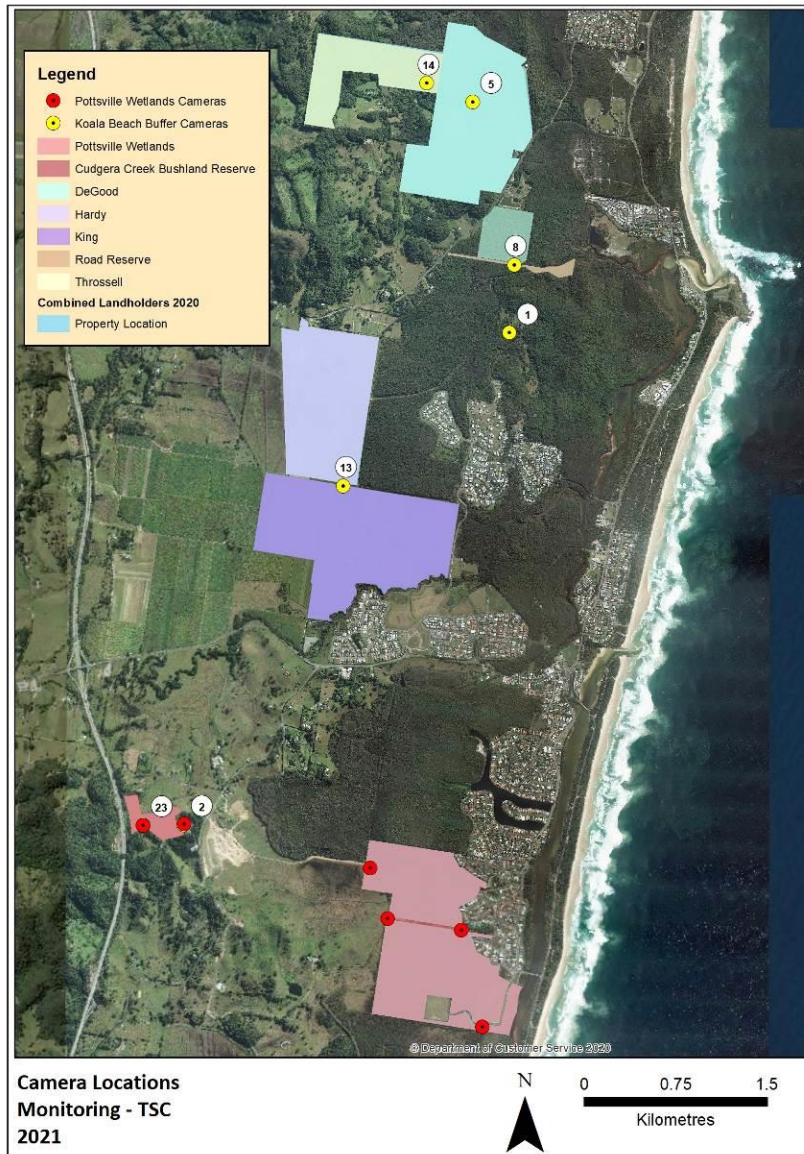
## 3.0 Methods

### 3.1 Camera Monitoring

Fox and other vertebrate pest activity was monitored for the duration using three Reconyx and two Swift 3C “heat in motion” cameras. The cameras were maintained at the locations shown at **Figure 1** and **Tables 1 and 2**.

An additional two cameras were maintained in the Cudgerie Creek Bushland Reserve and three cameras in Pottsville Wetlands. Both reserves are located to the south and south-west of Koala Beach and are managed by Tweed Shire Council (**Figure 1**). These monitoring cameras were funded by Council under a separate program.

Where possible the images from each camera were downloaded on a weekly basis during the baiting period and on a fortnightly or three-week basis during non-baiting periods. The Heath Road camera was removed during school holiday periods to avoid having the camera stolen or otherwise tampered with. The number of individual predators was recorded along with other incidental records such as threatened species observations.



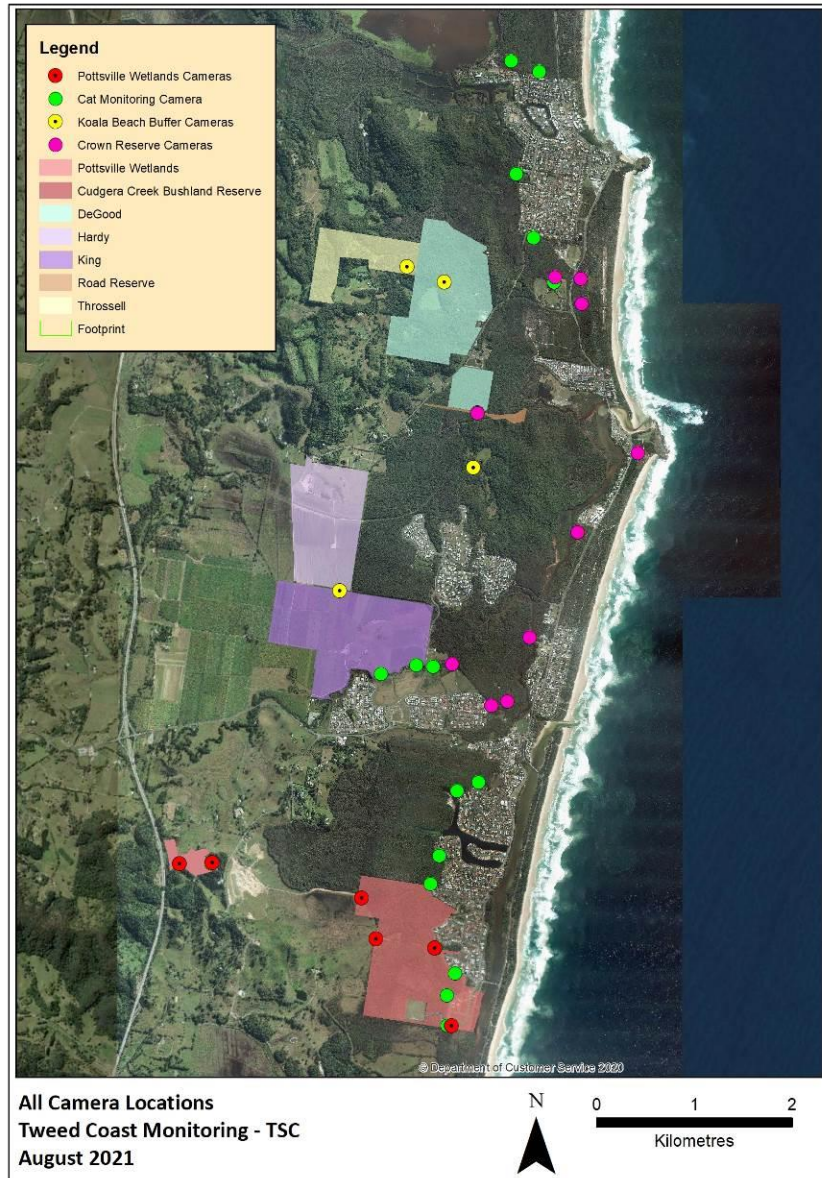
**Figure 1:**  
Properties and camera locations, spring 2021

**Table 1: Koala Beach Buffer, Camera Locations (Map Datum GDA94)**

Location	Camera	Easting	Northing
Round Mtn property - track intersection (Round Mtn)	Camera 5	554566	6864216
Round Mtn property - track intersection (Round Mtn)	Camera 14	554187	6864371
Cane fields Property - North drain track West end	Camera 13	553501	6861068
Heath Road - TSC	Camera 7	554908	6862880
Lot 2, Lomandra Drive, Koala Beach	Camera S1	554947	6862299

**Table 2: Cudgerie Creek Bushland Reserve, Camera Locations (Map Datum GDA94)**

Location	Camera	Easting	Northing
Western Boundary near overpass	Camera 26	551859	6858283
Eastern Boundary near quarry	Camera S2	552193	6858294



**Figure 2:**  
Location of all TSC  
Cameras in the Pottsville,  
Koala Beach and Hastings  
Point area, 2021

### 3.2 Concurrent Camera Monitoring Programs - Tweed Shire Council

This Koala Beach buffer camera monitoring program is important and targets areas additional to those already covered by on-going monitoring programs conducted across the Tweed Coast by Council. These concurrent programs include vertebrate predator

monitoring of Tweed Coast crown reserves managed by Council (4 – 6 cameras) and vertebrate predator monitoring Pottsville Wetland and Cudgera Creek Bushland Reserve (5 cameras). In addition, a program monitoring for cats in high value bushland reserves (8 cameras) had been conducted in the months preceding this program (**Figure 2**). Combined, these programs play a significant role in the management of introduced vertebrate pests, the local Bush Stone-curlew and Koala populations as well as local beach-nesting shorebirds such as the Australian Pied Oystercatcher and Beach Stone-curlew at Hastings Point.

### **3.3 1080 Baiting Program**

The results of the camera monitoring program indicated that there was a population of foxes across the Koala Beach buffer project area. The monitoring determined that there was a need to establish a control program using 1080 baits if the local breeding populations of Bush Stone-curlew, Koala, Common Planigale and other native fauna were to be protected; and, the impact of these foxes on local native fauna was to be reduced. Wild dogs were absent during this monitoring period and had not been recorded on the properties during the preceding months.

Seventeen fresh-meat bait-stations were established, fourteen within the Koala Beach buffer, two along Kelleher's Road, Pottsville Wetlands and one at Cudgera Creek Bushland Reserve. Bait stations were at intervals of approximately 200 - 400m along the trail networks or at camera locations (**Figure 3 and Table 2**).

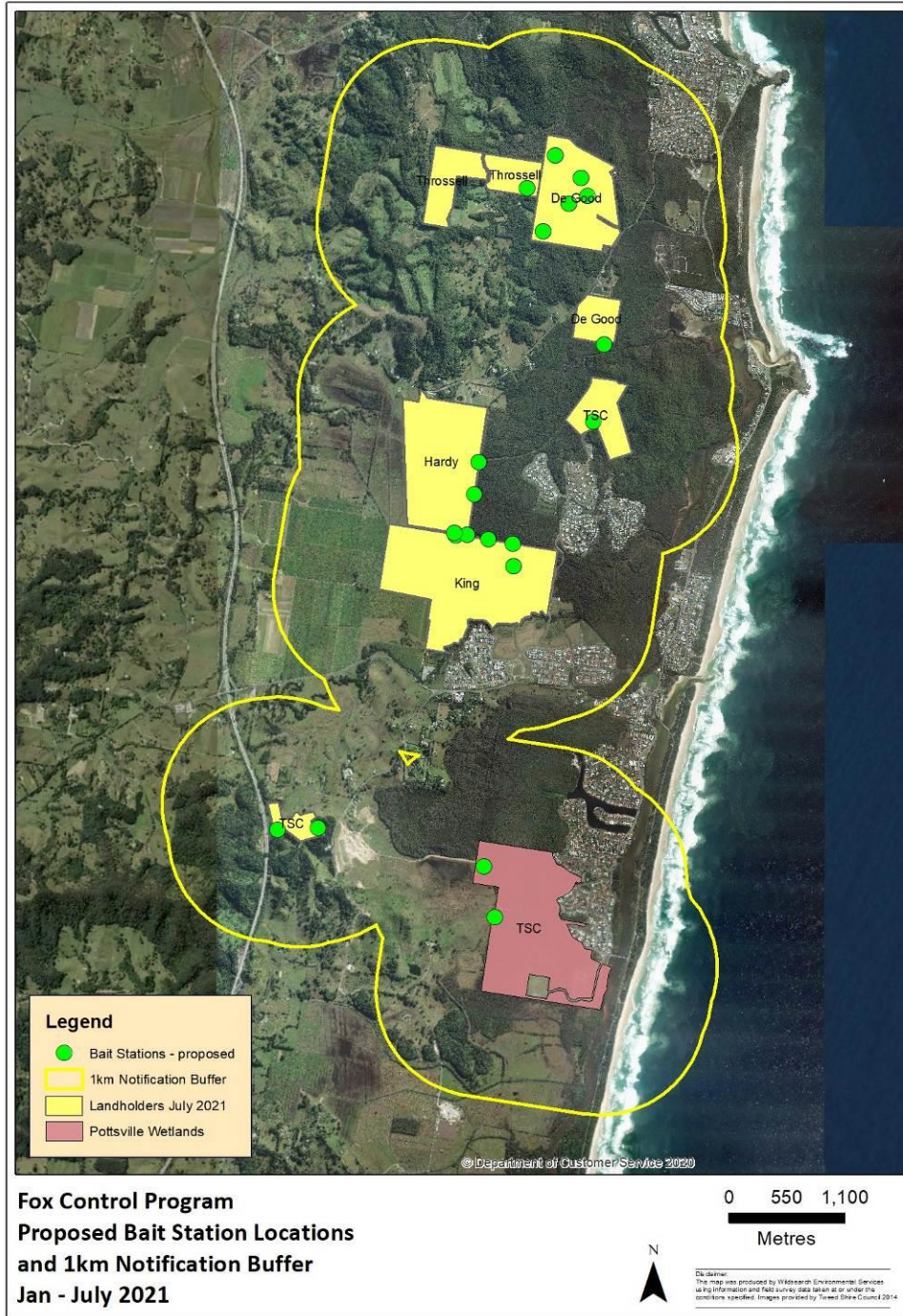
Fresh-meat baits containing 1080 were obtained from North Coast Local Land Services. Due to the proximity of urban areas all 1080 baits were buried and those along Kelleher's Road and adjacent to Heath Road were tethered using a tent peg and short length of string. This lessened the risk of baits being removed by Torresian Crows and Pied Currawongs and prevented foxes caching the baits at another location.

**Public notification** was via direct letterbox drops (approx. 2800 letters) and via an advertisement in the Tweed Link. Written consent was obtained from all participating landholders.

The baiting program avoided the school holiday period and other public holidays. Generally, baits were checked and replaced twice weekly. All untaken baits were collected and buried on site. 1080 fox baits were used and stored in accordance with the Pesticide Control (1080 Bait Products) Order (PCO).

As required by the PCO, the standard 1080 baiting notices were posted at all access points into each property. However, several additional very large warning signs were erected at the start of and along Heath Road. This was deemed necessary as several people regularly walked along the track with their dogs. Despite the 1080 warning signs these dogs were often off-leash or allowed to wander freely.





**Figure 3:**  
Bait-station  
Locations,  
spring 2021

## 4.0 Results

### 4.1 Camera Monitoring Results

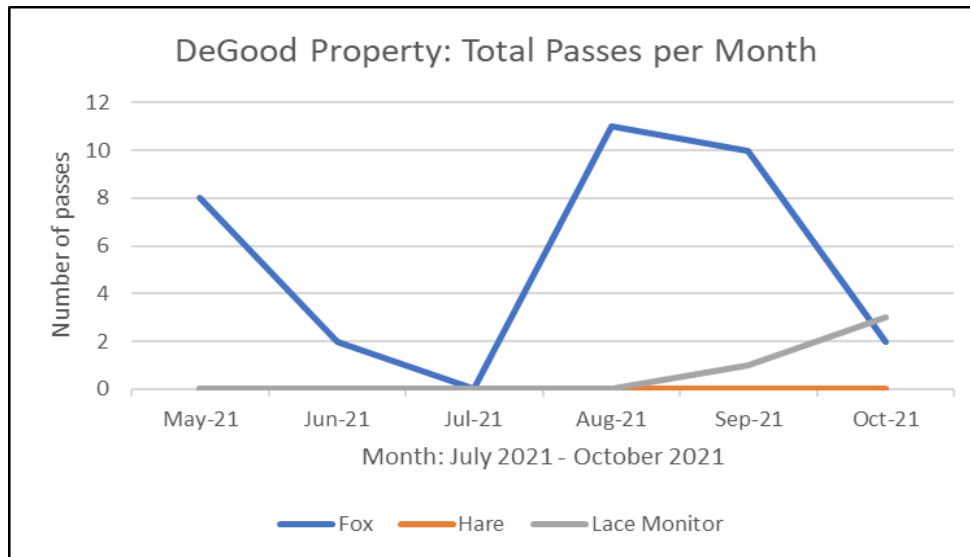
Camera monitoring has been continuous at most sites since 2018. During this reporting period (1 May 2021 – 4 November 2021) all cameras were in place for the duration of the baiting program. The Heath Road camera was removed for the summer school holidays due to an increased risk of theft and vandalism.

The camera data for each site was analysed to assess trends over time and effectiveness of the 1080 baiting program. The results are shown at **Charts 1 - 5**.

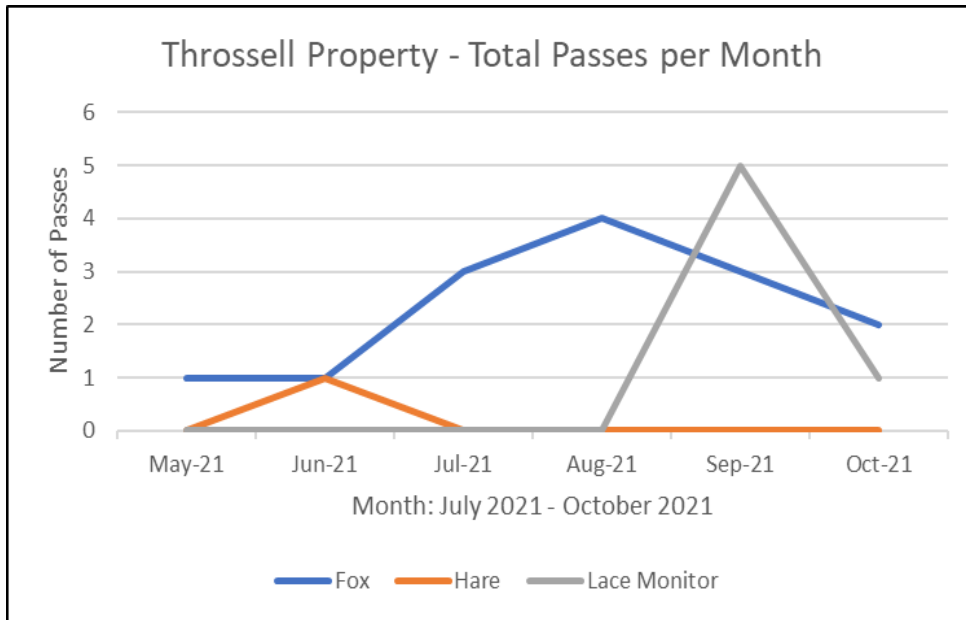
Monitoring showed that several foxes, up to nine, occurred across the project area with the greatest number, and highest activity, being recorded at Heath Road, Round Mountain and Lot 2, Koala Beach. The results of this monitoring are shown at **Appendix B**. Several camera images are shown at **Appendix A**.

Foxes were recorded by all cameras. The greatest activity was recorded by Camera S1 (Lot 2, Koala Beach) where up to three foxes were recorded, often passing the camera on multiple occasions during a 24-hour period (**Chart 4**). At least two foxes were recorded in the Round Mountain area – DeGood, Throssell and Heath Road with one of the foxes badly affected by mange. Several other foxes had mange. No wild dogs were recorded during the monitoring period.

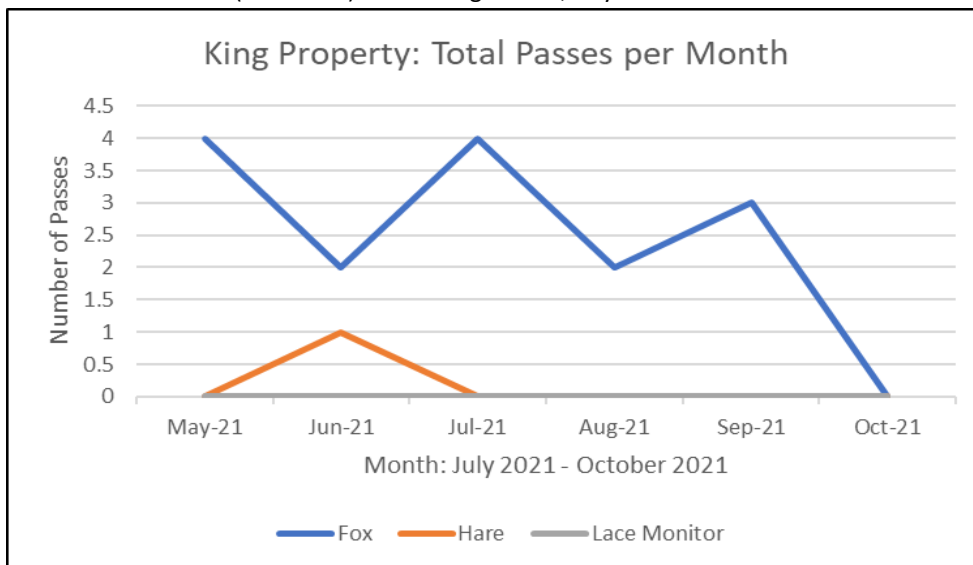
**Chart 1:** Camera 5 (forest) monitoring results, July – October 2021



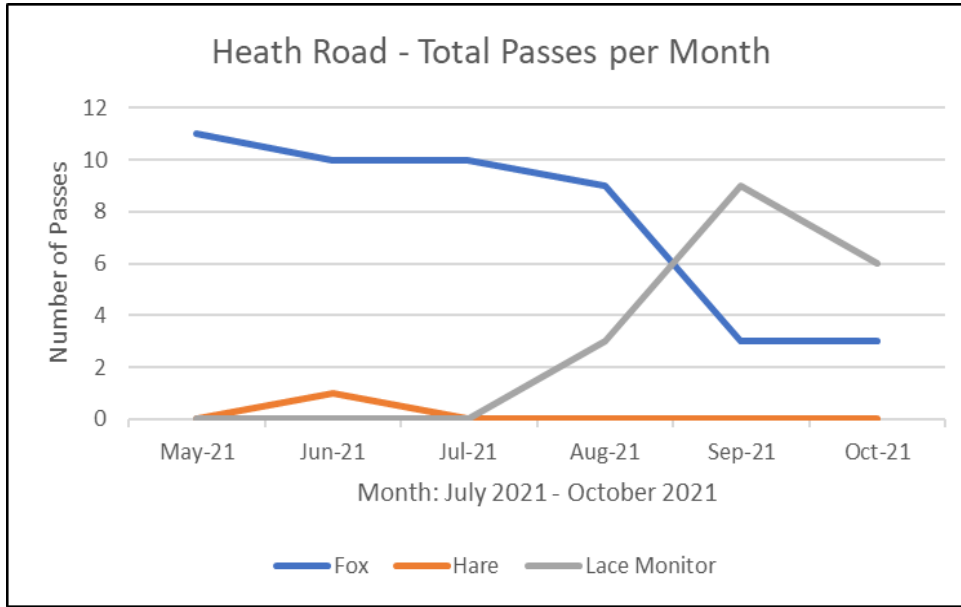
**Chart 2:** Camera 7 (forest) monitoring results, July – October 2021



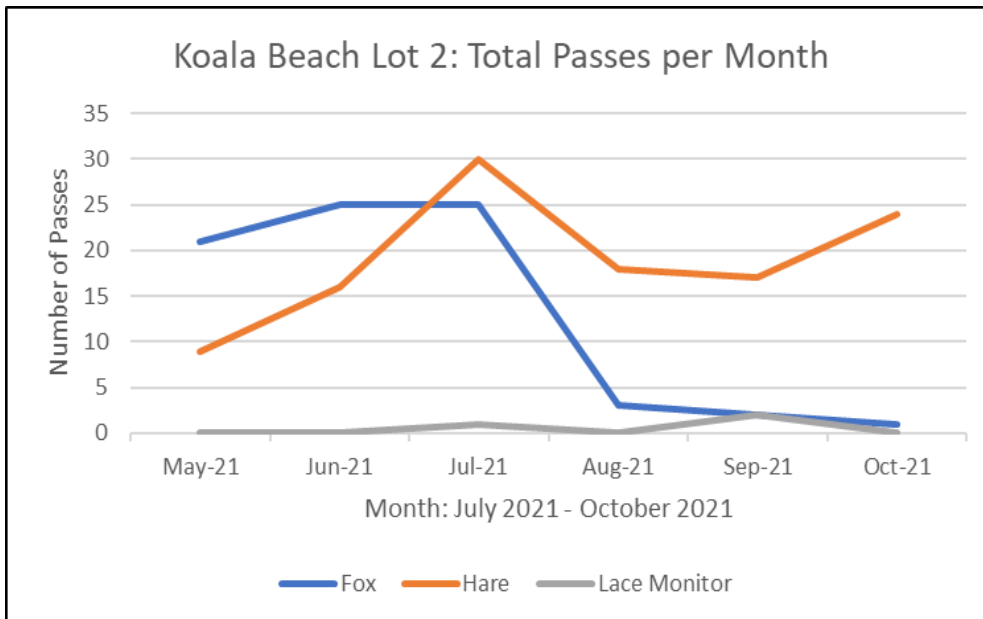
**Chart 3:** Camera 10 (cane field) monitoring results, July – October 2021



**Chart 4:** Camera S1 (Heath Road) monitoring results, July – October 2021



**Chart 5:** Camera S4 (Lot 2 Koala Beach) monitoring results, July – October 2021



The positive results of the baiting programs are clearly evident as shown by **Charts 1 – 5**.

It should be noted that the “Numer of passes” totals represent the number of times a fox passed the camera, not the number of foxes. The number of foxes at the forest sites totalled no more than two or three individuals. This was determined by the degree of infection by mange for each

animal or differences in coat colour patterns. At the cane field sites three foxes were positively identified.

The charts also show that hare activity was high at all non-forest sites. The highest being recorded at Lot 2, Koala Beach (**Chart 5**).

On 7 May 2021 a feral deer was recorded on Camera 10 (**Plate 1**). This deer was then recorded to the north by Camera 7 on the 28 May 2021. This deer was not recorded by any other camera.



**Plate 1:** Feral deer, King’s property, 7 May 2021

#### **4.2 1080 Baiting Program**

Baiting was conducted over a fourteen-week period between 2 August – 4 November 2021 and focussed on areas with significant fox activity. The bait stations were closed for two weeks during the school holiday period.

Seventeen bait-stations were established at part of the overall Tweed Coast 1080 baiting program. Fourteen were within the Koala Beach buffer, two along the western parts of Kelleher’s Road, Pottsville Wetlands and one at Cudgera Creek Bushland Reserve (See **Figure 3** and **Table 3**).

In total 116 baits (65% of total set) were taken across the project area. Foxes took at least 32 baits, including those from Cudgera Creek and Pottsville Wetlands. A further 83 baits were taken by unknown (unconfirmed) animals but a number of these may have been taken by foxes. Camera monitoring determined that some were taken by Lace

Monitors. Several baits were eaten by Bush-turkeys. A wild dog took one bait at Cudgera Creek Bushland Reserve. No other wild dogs were recorded.

A higher bait uptake was recorded at the Round Mountain and other forested locations, and this was attributed to Lace Monitors (**Table 3**). Lace Monitors were absent from the cane field sites. Only two, possible three foxes were recorded at the Round Mountain site. One was severely affected by mange and the other fox had a full and healthy coat. The mange affected fox appeared to be bait shy. The other took a bait and was not seen again.

On-going camera monitoring showed minimal fox activity after the baiting program had concluded. The remaining foxes appeared to be bait shy animals that avoided investigating/taking the baits. A trapping program is recommended prior to the commencement of the next baiting program.

In contrast to previous programs, not tethering the baits significantly improved the uptake of baits. Foxes were observed to be very cautiously when approaching the baits and often circled the site several times before moving in to very cautiously take the bait (**Plate 2**). This behaviour was typical. At Cudgera Creek Bushland Reserve a fox was observed approaching the bait station with a small mammal in its mouth. It placed this prey animal on the ground before cautiously approaching the bait which it gathered up with the prey animal. It then carried both from the site. This fox later returned to the bait station and over subsequent weeks removed several baits before eating one itself. It is assumed that this fox subsequently died.

During the winter 2020 program many baits were taken or disturbed by Torresian Crows and Pied Currawongs. These birds were ever-present, and it is likely that they observed the location of the buried baits early in the program. To counter this, the baits were often set late in the day (after or close to sunset) when the birds were not present. The bait locations were also disguised by cane trash, small sticks and decoy mounds of earth. This technique was adopted for this program and proved effective.



**Plate 2:** Fox (with mangle) approaching a bait station, Throssell property, 11 August 2021

**Table 2: Bait-station locations 2 August – 11 November 2021 (Map Datum GDA94)**

Bait-Station	General Location	Easting	Northing
BS1	Cudgerie Creek Bushland Reserve, western ridge	552200	6858285
BS2	King property – northern drain - west of camera	554039	6860781
BS3	King property – northern drain – at camera	554031	6861000
BS4	King property – northern drain –east of camera	553496	6861072
BS5	Hardy property – southern drain – bridge crossing	553477	6861093
BS6	Hardy property – south-eastern corner of property	553602	6861073
BS7	Hardy property – eastern drain at crossroads	553724	6861787
BS8	DeGood - Heath Road area	554915	6862878
BS9	DeGood property - intersection	554566	6864216
BS10	DeGood property – SW corner	554327	6863946
BS11	Throssell property – camera location	554187	6864371
BS12	DeGood property – North on fire trail	554445	6864675
BS13	DeGood property – North-east fire trail	554601	6864694
BS14	DeGood property – east fire trail	554685	6864468
BS15	Kelleher’s Road, Pottsville Wetland Reserve	553843	6857726
BS16	Kelleher’s Road, Pottsville Wetland Reserve	553728	6857933
BS17	Lot 2, Lomandra Drive, Koala Beach	554935	6862287

**Table 3: Summary of baiting program results: 2 August – 11 November 2021**

Site Number	Total Taken by Dog	Total Taken by Fox	Total Taken by Unknown	Total Number of Baits Taken	Total Number of Baits Set
BS1	1	8	1	10	14
BS2	0	3	3	6	7
BS3	0	3	5	8	9
BS4	0	5	3	8	9
BS5	0	2	4	6	9
BS6	0	2	5	7	9
BS7	0	1	3	4	9
BS8	0	0	6	6	9
BS9	0	4	6	10	13
BS10	0	0	6	6	13
BS11	0	0	4	4	13
BS12	0	1	10	11	13
BS13	0	0	10	10	13
BS14	0	1	9	10	13
BS15	0	0	3	3	13
BS16	0	1	3	4	13
BS17	0	1	2	3	13
<b>Totals</b>	<b>1</b>	<b>32</b>	<b>83</b>	<b>116</b>	<b>178</b>

**Note:** “Unknown” takes may include baits taken by foxes, Torresian Crows, Australian Brush-turkeys and Lace Monitors

## 5.0 Discussion

The camera monitoring confirmed the presence of foxes across the project area and suggested relatively high levels of activity. This monitoring also confirmed the continuing presence of a significant Bush Stone-curlew population to the west of Pottsville and that the fox control program is potentially assisting in protecting these important breeding populations.

Lace Monitors were a significant problem at the forested sites and were recorded taking several baits, particularly during the later weeks of the program. This greatly reduced the effectiveness of the program. Several baits were taken by Lace Monitors during the day while foxes were recorded investigating the empty bait station later the following evening. This was overcome to some extent by setting the baits late in the day once Lace Monitor activity had reduced.

Conducting a targeted baiting program over a longer period was effective but was more of an imposition on the participating landowners than the usual short-term baiting program.

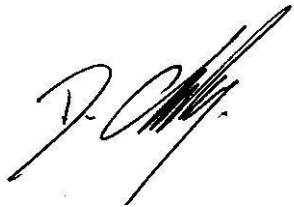


As for previous program all landowners were very supportive and appreciated the efforts to control fox numbers and thereby protect local populations of Koalas, Bush Stone-curlew and other native ground dwelling species.

## 6.0 Recommendations:

The recommendations are made:

- It is recommended that a two-week trapping program be conducted prior to the next baiting program 2021. This should focus on the bait-shy foxes identified during this program.
- This monitoring and control program should be maintained as it is an essential program in the overall Tweed Coast vertebrate pest management program and contributes to the improvements in the local Bush Stone-curlew, beach-nesting shorebirds and Koala populations.
- All future baiting programs should be informed by an on-going camera monitoring program.
- Baiting programs should not, as a rule, be conducted once Lace Monitors become more active i.e., during late spring through to early autumn. Many baits are taken by the Lace Monitors during this period which significantly reduces the effectiveness of the program.
- Baiting should target areas of high fox activity and areas adjacent to known Koala and Bush Stone-curlew breeding populations.
- Baits should not be tethered at forested or remote locations. It is preferable for risk management purposes to tether baits along Kelleher's Road in Pottsville wetlands.
- As per current protocols, baiting programs should avoid school and public holiday periods.



David Charley  
Ecological Consultant  
23 November 2021

## Appendix A: Photographs



**Plate A1:** Camera S6 – Fox with prey (probable hare), Heath Road, 15 July 2021



**Plate A2:** Camera 7 – Bait shy fox recoiling from un-tethered bait, 11 August 2021



**Plate A3:** Camera S1 - Koala, 13 August 2021



**Plate A4:** Camera 5 - Koala, 24 September 2021

## Appendix B: Camera Monitoring Results

Table B1: All camera monitoring results May 2021 – November 2021 (Cudgerie Creek Bushland Reserve and Kelleher's Road not included)

Camera No.	Locality	Day	Month	Year	Time	Image No.	Baiting Period	Fox	Fox with prey	Hare	Koala	Bush-stone Curlew	Lace Monitors	Comment
5	De Goode	13	5	2021	2347	1	No	1						
5	De Goode	14	5	2021	0112	6	No	1						
5	De Goode	18	5	2021	0506	21	No	1						
5	De Goode	23	5	2021	2158	46	No	1						
5	De Goode	23	5	2021	0157	191	Trapping	1						
5	De Goode	23	5	2021	2020	456	Trapping	1						
5	De Goode	23	5	2021	1709	596	Trapping	1						
5	De Goode	23	5	2021	0519	601	Trapping	1						
5	De Goode	13	6	2021	2309	21	No	1						
5	De Goode	21	6	2021	0049	121	No	1						
5	De Goode	7	8	2021	0833	16	Baiting	1						Healthy
5	De Goode	8	8	2021	2015	31	Baiting	1						Mange
5	De Goode	9	8	2021	1033	41	Baiting	1						Mange
5	De Goode	11	8	2021	2321	11	Baiting	1						Mange
5	De Goode	12	8	2021	0232	16	Baiting	1						Mange
5	De Goode	12	8	2021	2145	36	Baiting	1						Mange
5	De Goode	16	8	2021	2140	36	Baiting	1						Mange
5	De Goode	17	8	2021	0030	41	Baiting	1						Healthy
5	De Goode	19	8	2021	1128	56	Baiting	1						Mange
5	De Goode	24	8	2021	2229	81	Baiting	1						Mange

Camera No.	Locality	Day	Month	Year	Time	Image No.	Baiting Period	Fox	Fox with prey	Hare	Koala	Bush-stone Curlew	Lace Monitors	Comment
5	De Goode	25	8	2021	2116	111	Baiting	1						Mange
5	De Goode	1	9	2021	2005	11	Baiting	1						Mange
5	De Goode	2	9	2021	0645	16	Baiting	1						Mange
5	De Goode	2	9	2021	1511	21	Baiting	1						Mange
5	De Goode	4	9	2021	0525	11	Baiting	1						Mange
5	De Goode	4	9	2021	2144	16	Baiting	1						Mange
5	De Goode	4	9	2021	2246	21	Baiting	1						Healthy
5	De Goode	4	9	2021	2306	26	Baiting	1						Healthy
5	De Goode	6	9	2021	2355	1	Baiting	1						Mange
5	De Goode	7	9	2021	0509	6	Baiting	1						Mange
5	De Goode	11	9	2021	1013	12	Baiting						1	
5	De Goode	24	9	2021	0035	1	Baiting				1			Good images
5	De Goode	24	9	2021	0347	6	Baiting	1						Healthy
5	De Goode	2	10	2021	1549	1	Baiting						1	
5	De Goode	4	10	2021	0848	6	Baiting						1	
5	De Goode	16	10	2021	0323	1	Baiting	1						Mange
5	De Goode	17	10	2021	1105	7	Baiting						1	
5	De Goode	21	10	2021	0118	11	Baiting	1						Mange / Nightjar on ground
13	King	15	5	2021	1916	3011	No	1						
13	King	16	5	2021	1856	3616	No	1						
13	King	26	5	2021	2025	536	Trapping					1		
13	King	27	5	2021	0038	801	Trapping	1						
13	King	27	5	2021	0051	936	Trapping					1		
13	King	27	5	2021	0100	1006	Trapping					1		
13	King	27	5	2021	0142	1146	Trapping					1		

Camera No.	Locality	Day	Month	Year	Time	Image No.	Baiting Period	Fox	Fox with prey	Hare	Koala	Bush-stone Curlew	Lace Monitors	Comment
13	King	27	5	2021	1830	1866	Trapping					1		
13	King	27	5	2021	2011	1891	Trapping					1		
13	King	27	5	2021	2219	1900	Trapping					1		
13	King	27	5	2021	2319	1921	Trapping					1		
13	King	28	5	2021	1755	2381	Trapping	1						
13	King	29	5	2021	0049	2471	Trapping					1		
13	King	29	5	2021	2057	3406	Trapping					1		
13	King	29	5	2021	2228	3447	Trapping					1		
13	King	30	5	2021	0402	3726	Trapping					1		
13	King	30	5	2021	0500	3776	Trapping					1		
13	King	30	5	2021	2045	4771	Trapping					1		
13	King	30	5	2021	2157	4906	Trapping					1		
13	King	30	5	2021	2359	5050	Trapping					1		
13	King	31	5	2021	0045	5076	Trapping					1		
13	King	31	5	2021	0733	5466	Trapping					1		
13	King	3	6	2021	0632	6466	Trapping	1						
13	King	4	6	2021	0259	6626	Trapping					1		
13	King	5	6	2021	2307	7966	Trapping					1		
13	King	5	6	2021	2339	8031	Trapping					1		
13	King	8	6	2021	2047	9846	Trapping					1		
13	King	8	6	2021	2341	9983	Trapping					1		
13	King	10	6	2021	1717	5272	No	1						
13	King	10	6	2021	2053	8831	No					1		
13	King	13	6	2021	1925	6347	No					1		
13	King	18	6	2021	1849	2080	No					1		

Camera No.	Locality	Day	Month	Year	Time	Image No.	Baiting Period	Fox	Fox with prey	Hare	Koala	Bush-stone Curlew	Lace Monitors	Comment
13	King	18	6	2021	1943	2089	No					1		
13	King	19	6	2021	0543	2302	No			1				
13	King	19	6	2021	1741	2674	No					1		
13	King	19	6	2021	1935	2698	No					1		
13	King	19	6	2021	2109	2716	No					1		
13	King	19	6	2021	2308	2818	No					1		
13	King	20	6	2021	0006	2869	No					1		
13	King	20	6	2021	1842	4387	No					1		
13	King	20	6	2021	2233	8590	No					1		
13	King	15	7	2021	1903	1729	No					1		
13	King	15	7	2021	1936	1768	No					1		
13	King	15	7	2021	1942	1771	No					1		
13	King	15	7	2021	2002	1843	No					1		
13	King	15	7	2021	2017	1870	No					1		
13	King	15	7	2021	2141	1915	No					1		
13	King	16	7	2021	2304	3108	No					1		
13	King	17	7	2021	2037	3721	No	1						
13	King	18	7	2021	2041	5095	No	1						
13	King	19	7	2021	1850	7201	No					1		
13	King	15	7	2021	1903	1729	No					1		
13	King	15	7	2021	1936	1768	No					1		
13	King	15	7	2021	2005	1843	No					1		
13	King	15	7	2021	2019	1873	No					1		
13	King	15	7	2021	2145	1933	No					1		
13	King	16	7	2021	2304	3109	No					1		

Camera No.	Locality	Day	Month	Year	Time	Image No.	Baiting Period	Fox	Fox with prey	Hare	Koala	Bush-stone Curlew	Lace Monitors	Comment
13	King	17	7	2021	2237	3721	No	1						
13	King	18	7	2021	2041	5095	No	1						
13	King	19	7	2021	1850	7201	No					1		
13	King	22	7	2021	2229	40	No					1		
13	King	10	8	2021	1948	1	Yes	1						
13	King	14	8	2021	0239	2185	Yes	1						
13	King	14	8	2021	1907	4451	Yes					1		
13	King	17	8	2021	1856	1001	Yes					1		
13	King	20	8	2021	1933	9480	Yes					1		
13	King	21	8	2021	1845	6177	Yes					1		
13	King	21	8	2021	1920	6802	Yes					1		
13	King	2	9	2021	0311	1	Yes	1						
13	King	24	9	2021	0326	31	Yes	1						
13	King	28	9	2021	2304	92	Yes					1		
13	King	29	9	2021	0305	96	Yes	1						
14	Throssell	28	5	2021	0140	16	No							Red deer - male
14	Throssell	23	5	2021	2134	81	No	1						
14	Throssell	26	6	2021	1943	281	No	1						Mange
14	Throssell	16	7	2021	2140	336	No	1						Healthy
14	Throssell	19	7	2021	1932	351	No	1						Mange
14	Throssell	28	7	2021	1939	396	No	1						Mange
14	Throssell	11	8	2021	2127	21	Yes	1						Bait shy, mange
14	Throssell	25	8	2021	1326	101	Yes	1						Mange
14	Throssell	30	8	2021	1954	153	Yes	1						Mange
14	Throssell	31	8	2021	0009	162	Yes	1						Healthy



Camera No.	Locality	Day	Month	Year	Time	Image No.	Baiting Period	Fox	Fox with prey	Hare	Koala	Bush-stone Curlew	Lace Monitors	Comment
14	Throssell	1	9	2021	1832	6	Yes	1						Healthy
14	Throssell	9	9	2021	1829	1	Yes				1			
14	Throssell	20	9	2021	1204	1	Yes						1	
14	Throssell	21	9	2021	1418	6	Yes						1	
14	Throssell	23	9	2021	1028	21	Yes						1	
14	Throssell	23	9	2021	1114	36	Yes						1	
14	Throssell	23	9	2021	1202	46	Yes						1	
14	Throssell	24	9	2021	0319	51	Yes	1						Healthy
14	Throssell	24	9	2021	0333	81	Yes	1						Healthy
14	Throssell	6	10	2021	0324	21	Yes	1						Healthy
14	Throssell	13	10	2021	2336	1	Yes	1						Healthy
14	Throssell	24	10	2021	0828	26	Yes						1	
14	Throssell	3	11	2021	0303	26	Baiting	1						
S6	Heath Road	12	5	2021	2108	16	No	1						
S6	Heath Road	12	5	2021	2133	20	No	1						
S6	Heath Road	15	5	2021	0737	31	No	1						
S6	Heath Road	15	5	2021	1510	37	No							
S6	Heath Road	16	5	2021	2208	125	No	1						
S6	Heath Road	17	5	2021	0714	128	No	1						
S6	Heath Road	18	5	2021	0728	152	No	1						
S6	Heath Road	18	5	2021	1927	160	No	1						
S6	Heath Road	20	5	2021	1856	205	No	1						
S6	Heath Road	21	5	2021	2043	219	No	1						
S6	Heath Road	23	5	2021	0318	229	No	1						
S6	Heath Road	23	5	2021	2300	253	No	1						

Camera No.	Locality	Day	Month	Year	Time	Image No.	Baiting Period	Fox	Fox with prey	Hare	Koala	Bush-stone Curlew	Lace Monitors	Comment
S6	Heath Road	18	6	2021	2126	1	No	1						
S6	Heath Road	18	6	2021	2233	4	No	1						
S6	Heath Road	21	6	2021	1934	55	No	1						
S6	Heath Road	21	6	2021	2032	58	No	1						
S6	Heath Road	22	6	2021	0238	62	No			1				
S6	Heath Road	23	6	2021	1741	10	No	1						
S6	Heath Road	25	6	2021	1943	25	No	1						
S6	Heath Road	25	6	2021	2223	34	No	1						
S6	Heath Road	29	6	2021	1734	89	No	1						
S6	Heath Road	29	6	2021	1932	91	No	1						
S6	Heath Road	29	6	2021	1934	96	No	1						
S6	Heath Road	5	7	2021	2323	130	No	1						
S6	Heath Road	10	7	2021	0024	163	No	1						
S6	Heath Road	11	7	2021	2330	190	No	1						
S6	Heath Road	15	7	2021	0330	233	No	1						
S6	Heath Road	15	7	2021	1943	1	No	1						
S6	Heath Road	15	7	2021	2149	5	No		1					With Koala as prey
S6	Heath Road	17	7	2021	0214	34	No	1						
S6	Heath Road	25	7	2021	0328	205	No	1						
S6	Heath Road	30	7	2021	2326	289	No	1						
S6	Heath Road	31	7	2021	2246	292	No	1						
S6	Heath Road	2	8	2021	0118	331	No	1						
S6	Heath Road	6	8	2021	0355	19	No	1						
S6	Heath Road	7	8	2021	1252	23	No						1	
S6	Heath Road	8	8	2021	0104	34	No	1						

Camera No.	Locality	Day	Month	Year	Time	Image No.	Baiting Period	Fox	Fox with prey	Hare	Koala	Bush-stone Curlew	Lace Monitors	Comment
S6	Heath Road	10	8	2021	2145	16	Yes	1						
S6	Heath Road	11	8	2021	1752	23	Yes	1						
S6	Heath Road	14	8	2021	0106	13	Yes	1						
S6	Heath Road	18	8	2021	1933	49	Yes	1						
S6	Heath Road	20	8	2021	1115	85	Yes						1	
S6	Heath Road	23	8	2021	1055	149	Yes						1	
S6	Heath Road	28	8	2021	2045	280	Yes	1						
S6	Heath Road	31	8	2021	0245	331	Yes	1						
S6	Heath Road	3	9	2021	0235	109	Yes	1						
S6	Heath Road	5	9	2021	2316	223	Yes	1						
S6	Heath Road	6	9	2021	1134	231	Yes						1	
S6	Heath Road	6	9	2021	1344	257	Yes						1	
S6	Heath Road	7	9	2021	1040	311	Yes						1	
S6	Heath Road	7	9	2021	1248	319	Yes						1	
S6	Heath Road	8	9	2021	1027	343	Yes						1	
S6	Heath Road	10	9	2021	1159	43	Yes						1	
S6	Heath Road	11	9	2021	1028	65	Yes						1	
S6	Heath Road	12	9	2021	0007	82	Yes	1						
S6	Heath Road	12	9	2021	1049	97	Yes						1	
S6	Heath Road	30	9	2021	0309	33	Yes						1	
S6	Heath Road	1	10	2021	0331	37	Yes						1	
S6	Heath Road	4	10	2021	1522	109	Yes	1						
S6	Heath Road	4	10	2021	2205	147	Yes						1	
S6	Heath Road	5	10	2021	1255	153	Yes						1	
S6	Heath Road	5	10	2021	1008	177	Yes						1	

Camera No.	Locality	Day	Month	Year	Time	Image No.	Baiting Period	Fox	Fox with prey	Hare	Koala	Bush-stone Curlew	Lace Monitors	Comment
S6	Heath Road	6	10	2021	0036	185	Yes	1						
S6	Heath Road	7	10	2021	0922	33	Yes						1	
S6	Heath Road	14	10	2021	1113	18	Yes						1	
S6	Heath Road	27	10	2021	0252	25	Yes	1						
S6	Heath Road	3	11	2021	2318	165	Yes						1	
S6	Heath Road	27	11	2021	1452	25	Yes	1						
S6	Heath Road	28	11	2021	1159	41	Yes	1						
S1	Koala Centre Road	7	4	2021	0609	46	No	1						
S1	Koala Centre Road	8	4	2021	0119	56	No	1						
S1	Koala Centre Road	8	4	2021	0502	61	No	1						
S1	Koala Centre Road	17	4	2021	0030	256	No			1				
S1	Koala Centre Road	19	4	2021	0203	316	No	1						
S1	Koala Centre Road	19	4	2021	2033	336	No			1				
S1	Koala Centre Road	19	4	2021	2125	346	No	1						
S1	Koala Centre Road	21	4	2021	0403	386	No	1						
S1	Koala Centre Road	21	4	2021	2315	416	No	1						
S1	Koala Centre Road	22	4	2021	2205	1	No			1				
S1	Koala Centre Road	23	4	2021	0605	17	No	1						
S1	Koala Centre Road	23	4	2021	2110	21	No					1		
S1	Koala Centre Road	24	4	2021	0023	36	No			1				
S1	Koala Centre Road	24	4	2021	2120	126	No			1				
S1	Koala Centre Road	25	4	2021	0830	132	No				1			
S1	Koala Centre Road	25	4	2021	2216	160	No			1				
S1	Koala Centre Road	25	4	2021	2336	167	No			1				
S1	Koala Centre Road	26	4	2021	2127	206	No			1				

Camera No.	Locality	Day	Month	Year	Time	Image No.	Baiting Period	Fox	Fox with prey	Hare	Koala	Bush-stone Curlew	Lace Monitors	Comment
S1	Koala Centre Road	28	4	2021	0032	226	No	1						
S1	Koala Centre Road	30	4	2021	2009	262	No	1						
S1	Koala Centre Road	2	5	2021	0244	276	No	1						
S1	Koala Centre Road	3	5	2021	0223	286	No	1						
S1	Koala Centre Road	4	5	2021	1927	291	No	1						
S1	Koala Centre Road	6	5	2021	0028	296	No	1						
S1	Koala Centre Road	7	5	2021	2305	321	No	1						
S1	Koala Centre Road	9	5	2021	0221	481	No			1				
S1	Koala Centre Road	9	5	2021	2059	511	No	1						
S1	Koala Centre Road	9	5	2021	2318	517	No	1						
S1	Koala Centre Road	10	5	2021	2131	576	No	1						
S1	Koala Centre Road	11	5	2021	0138	581	No	1						
S1	Koala Centre Road	11	5	2021	2004	606	No	1						
S1	Koala Centre Road	14	5	2021	0616	71	No	1						
S1	Koala Centre Road	18	5	2021	0407	331	No			1				
S1	Koala Centre Road	18	5	2021	2316	341	No			1				
S1	Koala Centre Road	20	5	2021	0632	347	No	1						
S1	Koala Centre Road	22	5	2021	0310	386	No	1						
S1	Koala Centre Road	24	5	2021	0247	471	No	1						
S1	Koala Centre Road	24	5	2021	2244	491	No			1				
S1	Koala Centre Road	24	5	2021	2309	496	No	1						
S1	Koala Centre Road	25	5	2021	0259	501	No	1						
S1	Koala Centre Road	26	5	2021	0228	521	No					1		
S1	Koala Centre Road	26	5	2021	2115	596	No	1						
S1	Koala Centre Road	27	5	2021	0301	601	No	1						

Camera No.	Locality	Day	Month	Year	Time	Image No.	Baiting Period	Fox	Fox with prey	Hare	Koala	Bush-stone Curlew	Lace Monitors	Comment
S1	Koala Centre Road	27	5	2021	2329	626	No	1						
S1	Koala Centre Road	28	5	2021	0230	641	No			1				
S1	Koala Centre Road	28	5	2021	0318	646	No					1		
S1	Koala Centre Road	28	5	2021	0502	686	No			1				
S1	Koala Centre Road	28	5	2021	2037	736	No			1				
S1	Koala Centre Road	29	5	2021	0113	746	No			1				
S1	Koala Centre Road	29	5	2021	2127	786	No	1						
S1	Koala Centre Road	30	5	2021	2237	806	No			1				
S1	Koala Centre Road	31	5	2021	1943	821	No	1						
S1	Koala Centre Road	1	6	2021	0505	826	No					1		
S1	Koala Centre Road	1	6	2021	2126	871	No	1						
S1	Koala Centre Road	4	6	2021	0311	23	No	1						
S1	Koala Centre Road	6	6	2021	1939	131	No			1				
S1	Koala Centre Road	6	6	2021	1939	137	No	1						
S1	Koala Centre Road	7	6	2021	2015	156	No	1						
S1	Koala Centre Road	8	6	2021	0632	161	No	1						
S1	Koala Centre Road	8	6	2021	2230	186	No	1						
S1	Koala Centre Road	10	6	2021	0039	191	No	1						
S1	Koala Centre Road	10	6	2021	2320	216	No	1						
S1	Koala Centre Road	11	6	2021	0437	221	No	1						
S1	Koala Centre Road	11	6	2021	0616	226	No	1						
S1	Koala Centre Road	11	6	2021	2107	231	No			1				
S1	Koala Centre Road	12	6	2021	0230	236	No	1						
S1	Koala Centre Road	13	6	2021	0345	272	No	1						
S1	Koala Centre Road	13	6	2021	1839	281	No			1				

Camera No.	Locality	Day	Month	Year	Time	Image No.	Baiting Period	Fox	Fox with prey	Hare	Koala	Bush-stone Curlew	Lace Monitors	Comment
S1	Koala Centre Road	14	6	2021	0004	291	No	1						
S1	Koala Centre Road	14	6	2021	0540	296	No			1				
S1	Koala Centre Road	14	6	2021	0644	301	No			1				
S1	Koala Centre Road	15	6	2021	0426	306	No	1						
S1	Koala Centre Road	15	6	2021	0711	311	No			1				
S1	Koala Centre Road	16	6	2021	0541	327	No	1						
S1	Koala Centre Road	16	6	2021	1933	341	No			1				
S1	Koala Centre Road	17	6	2021	0045	346	No			1				
S1	Koala Centre Road	18	6	2021	0501	366	No	1						
S1	Koala Centre Road	18	6	2021	0528	371	No	1						
S1	Koala Centre Road	19	6	2021	1907	46	No			1				
S1	Koala Centre Road	20	6	2021	0209	51	No	1						
S1	Koala Centre Road	21	6	2021	2336	141	No	1						
S1	Koala Centre Road	22	6	2021	0124	161	No					1		
S1	Koala Centre Road	22	6	2021	0144	171	No					1		
S1	Koala Centre Road	22	6	2021	0350	181	No			1				
S1	Koala Centre Road	23	6	2021	0132	206	No					1		
S1	Koala Centre Road	23	6	2021	0230	247	No					1		
S1	Koala Centre Road	23	6	2021	0312	262	No					1		
S1	Koala Centre Road	23	6	2021	0331	276	No					1		
S1	Koala Centre Road	23	6	2021	0445	281	No					1		
S1	Koala Centre Road	23	6	2021	2133	301	No					1		
S1	Koala Centre Road	23	6	2021	2214	311	No					1		
S1	Koala Centre Road	25	6	2021	0521	321	No	1						
S1	Koala Centre Road	25	6	2021	2138	331	No					1		

Camera No.	Locality	Day	Month	Year	Time	Image No.	Baiting Period	Fox	Fox with prey	Hare	Koala	Bush-stone Curlew	Lace Monitors	Comment
S1	Koala Centre Road	26	6	2021	0216	341	No					1		
S1	Koala Centre Road	26	6	2021	0223	361	No					1		
S1	Koala Centre Road	26	6	2021	0426	366	No			1				
S1	Koala Centre Road	26	6	2021	0710	371	No			1				
S1	Koala Centre Road	26	6	2021	2324	376	No					1		
S1	Koala Centre Road	26	6	2021	2351	381	No					1		
S1	Koala Centre Road	27	6	2021	0055	402	No					2		
S1	Koala Centre Road	27	6	2021	0332	417	No					1		
S1	Koala Centre Road	27	6	2021	2352	453	No					1		
S1	Koala Centre Road	28	6	2021	0213	471	No			1				
S1	Koala Centre Road	28	6	2021	0524	486	No					1		
S1	Koala Centre Road	28	6	2021	2258	501	No					1		
S1	Koala Centre Road	29	6	2021	0222	511	No			1				
S1	Koala Centre Road	29	6	2021	0254	516	No					1		
S1	Koala Centre Road	29	6	2021	0401	526	No					1		
S1	Koala Centre Road	29	6	2021	0546	536	No			1				
S1	Koala Centre Road	30	6	2021	0341	541	No					1		
S1	Koala Centre Road	30	6	2021	0415	551	No					1		
S1	Koala Centre Road	30	6	2021	2007	561	No			1				
S1	Koala Centre Road	1	7	2021	2110	586	No	1						
S1	Koala Centre Road	1	7	2021	2255	592	No	1						
S1	Koala Centre Road	3	7	2021	0259	606	No	1						
S1	Koala Centre Road	3	7	2021	2113	611	No	1						
S1	Koala Centre Road	5	7	2021	0052	617	No			1				
S1	Koala Centre Road	5	7	2021	0422	626	No	1						



Camera No.	Locality	Day	Month	Year	Time	Image No.	Baiting Period	Fox	Fox with prey	Hare	Koala	Bush-stone Curlew	Lace Monitors	Comment
S1	Koala Centre Road	6	7	2021	0406	631	No	1						
S1	Koala Centre Road	7	7	2021	0627	672	No	1						
S1	Koala Centre Road	7	7	2021	1919	711	No			1				
S1	Koala Centre Road	7	7	2021	2133	716	No					1		
S1	Koala Centre Road	8	7	2021	0249	726	No			1				
S1	Koala Centre Road	8	7	2021	0320	731	No					1		
S1	Koala Centre Road	8	7	2021	0344	741	No					1		
S1	Koala Centre Road	10	7	2021	0313	786	No	1						
S1	Koala Centre Road	11	7	2021	0217	797	No	1						
S1	Koala Centre Road	11	7	2021	0320	801	No			1				
S1	Koala Centre Road	11	7	2021	0338	806	No	1						
S1	Koala Centre Road	11	7	2021	0705	811	No			1				
S1	Koala Centre Road	11	7	2021	2252	861	No	1						
S1	Koala Centre Road	12	7	2021	0242	866	No	1						
S1	Koala Centre Road	12	7	2021	0559	871	No			1				
S1	Koala Centre Road	12	7	2021	0601	887	No			1				
S1	Koala Centre Road	12	7	2021	0715	891	No			1				
S1	Koala Centre Road	12	7	2021	0725	901	No			1				
S1	Koala Centre Road	13	7	2021	0149	941	No	1						
S1	Koala Centre Road	13	7	2021	0716	946	No			1				
S1	Koala Centre Road	14	7	2021	0125	971	No			1				
S1	Koala Centre Road	14	7	2021	0237	976	No	1						
S1	Koala Centre Road	14	7	2021	0347	981	No	1						
S1	Koala Centre Road	14	7	2021	0350	986	No	1						
S1	Koala Centre Road	14	7	2021	0557	991	No	1						

Camera No.	Locality	Day	Month	Year	Time	Image No.	Baiting Period	Fox	Fox with prey	Hare	Koala	Bush-stone Curlew	Lace Monitors	Comment
S1	Koala Centre Road	15	7	2021	0235	1026	No	1						
S1	Koala Centre Road	15	7	2021	1940	1	No			1				
S1	Koala Centre Road	16	7	2021	0135	16	No	1						
S1	Koala Centre Road	16	7	2021	2118	21	No			1				
S1	Koala Centre Road	17	7	2021	0149	26	No	1						
S1	Koala Centre Road	18	7	2021	2308	161	No			1				
S1	Koala Centre Road	18	7	2021	2323	166	No					2		
S1	Koala Centre Road	19	7	2021	0005	176	No	1						
S1	Koala Centre Road	19	7	2021	0336	181	No	1						
S1	Koala Centre Road	19	7	2021	2223	188	No			1				
S1	Koala Centre Road	20	7	2021	0117	211	No					1		possible report figure
S1	Koala Centre Road	20	7	2021	1856	266	No			1				
S1	Koala Centre Road	20	7	2021	2240	277	No			1				
S1	Koala Centre Road	20	7	2021	2321	287	No				1			
S1	Koala Centre Road	21	7	2021	0145	291	No			1				
S1	Koala Centre Road	21	7	2021	0707	296	No			1				
S1	Koala Centre Road	21	7	2021	2234	311	No					1		
S1	Koala Centre Road	22	7	2021	0139	352	No					1		
S1	Koala Centre Road	22	7	2021	0613	371	No			1				
S1	Koala Centre Road	22	7	2021	0714	376	No			1				
S1	Koala Centre Road	22	7	2021	2314	416	No			1				
S1	Koala Centre Road	23	7	2021	0103	436	No			1				
S1	Koala Centre Road	24	7	2021	2228	506	No					2		
S1	Koala Centre Road	25	7	2021	0141	516	No					2		
S1	Koala Centre Road	25	7	2021	0213	521	No			1				

Camera No.	Locality	Day	Month	Year	Time	Image No.	Baiting Period	Fox	Fox with prey	Hare	Koala	Bush-stone Curlew	Lace Monitors	Comment
S1	Koala Centre Road	25	7	2021	0429	536	No			1				
S1	Koala Centre Road	25	7	2021	0459	541	No					2		
S1	Koala Centre Road	25	7	2021	2248	621	No					2		
S1	Koala Centre Road	26	7	2021	2315	716	No					1		
S1	Koala Centre Road	27	7	2021	0155	726	No	1						
S1	Koala Centre Road	27	7	2021	0724	736	No			1				
S1	Koala Centre Road	28	7	2021	0352	751	No					1		
S1	Koala Centre Road	28	7	2021	1623	791	No						1	
S1	Koala Centre Road	29	7	2021	1956	826	No	1						
S1	Koala Centre Road	29	7	2021	2259	831	No	1						
S1	Koala Centre Road	30	7	2021	0314	841	No			1				
S1	Koala Centre Road	30	7	2021	0321	846	No			1				
S1	Koala Centre Road	30	7	2021	0439	856	No			1				
S1	Koala Centre Road	30	7	2021	0446	866	No					2		
S1	Koala Centre Road	30	7	2021	0612	876	No					2		
S1	Koala Centre Road	2	8	2021	0558	1966	No			1				
S1	Koala Centre Road	4	8	2021	0623	6	No			1				
S1	Koala Centre Road	4	8	2021	0646	11	No			1				
S1	Koala Centre Road	4	8	2021	0711	16	No			1				
S1	Koala Centre Road	6	8	2021	0503	1	No			1				
S1	Koala Centre Road	6	8	2021	2318	57	No	1						
S1	Koala Centre Road	9	8	2021	2323	211	No			1				
S1	Koala Centre Road	13	8	2021	1103	343	Yes				1			good image
S1	Koala Centre Road	14	8	2021	2319	51	Yes			1				
S1	Koala Centre Road	14	8	2021	2328	56	Yes			1				

Camera No.	Locality	Day	Month	Year	Time	Image No.	Baiting Period	Fox	Fox with prey	Hare	Koala	Bush-stone Curlew	Lace Monitors	Comment
S1	Koala Centre Road	18	8	2021	0041	31	Yes					1		
S1	Koala Centre Road	20	8	2021	0024	141	Yes					1		
S1	Koala Centre Road	20	8	2021	2307	176	Yes					1		
S1	Koala Centre Road	20	8	2021	2346	186	Yes					2		
S1	Koala Centre Road	22	8	2021	0013	206	Yes					1		
S1	Koala Centre Road	22	8	2021	0106	211	Yes					2		
S1	Koala Centre Road	22	8	2021	2111	256	Yes					1		
S1	Koala Centre Road	23	8	2021	0117	276	Yes					1		
S1	Koala Centre Road	23	8	2021	0128	281	Yes					2		good image for report
S1	Koala Centre Road	23	8	2021	2324	351	Yes			1				
S1	Koala Centre Road	24	8	2021	2212	471	Yes					1		
S1	Koala Centre Road	24	8	2021	2221	477	Yes					2		
S1	Koala Centre Road	25	8	2021	0252	491	Yes					1		
S1	Koala Centre Road	25	8	2021	0540	511	Yes					1		
S1	Koala Centre Road	25	8	2021	2228	636	Yes					2		
S1	Koala Centre Road	26	8	2021	0131	651	Yes					2		
S1	Koala Centre Road	26	8	2021	0310	666	Yes					2		
S1	Koala Centre Road	26	8	2021	0614	689	Yes					2		
S1	Koala Centre Road	26	8	2021	2254	756	Yes					2		
S1	Koala Centre Road	26	8	2021	2343	777	Yes					2		
S1	Koala Centre Road	27	8	2021	0126	791	Yes					2		
S1	Koala Centre Road	27	8	2021	0424	821	Yes	1						
S1	Koala Centre Road	27	8	2021	0620	847	Yes					1		
S1	Koala Centre Road	27	8	2021	0657	851	Yes			1				
S1	Koala Centre Road	27	8	2021	2252	917	Yes			1				

Camera No.	Locality	Day	Month	Year	Time	Image No.	Baiting Period	Fox	Fox with prey	Hare	Koala	Bush-stone Curlew	Lace Monitors	Comment
S1	Koala Centre Road	28	8	2021	0116	926	Yes					1		
S1	Koala Centre Road	28	8	2021	0307	947	Yes					1		
S1	Koala Centre Road	28	8	2021	0355	962	Yes					1		
S1	Koala Centre Road	28	8	2021	2005	1006	Yes			1				
S1	Koala Centre Road	28	8	2021	2320	1018	Yes			1				
S1	Koala Centre Road	29	8	2021	0219	1021	Yes					1		
S1	Koala Centre Road	29	8	2021	0408	1026	Yes			1				
S1	Koala Centre Road	29	8	2021	0501	1031	Yes	1						
S1	Koala Centre Road	29	8	2021	2050	1126	Yes			1				
S1	Koala Centre Road	29	8	2021	2313	1131	Yes			1				
S1	Koala Centre Road	30	8	2021	0533	1141	Yes					1		
S1	Koala Centre Road	30	8	2021	2250	1201	Yes			1				
S1	Koala Centre Road	31	8	2021	0506	1206	Yes					1		
S1	Koala Centre Road	31	8	2021	2149	26	Yes			1				
S1	Koala Centre Road	1	9	2021	0207	31	Yes			1				
S1	Koala Centre Road	1	9	2021	0422	37	Yes					1		
S1	Koala Centre Road	1	9	2021	0432	47	Yes	1						
S1	Koala Centre Road	1	9	2021	0705	61	Yes			1				
S1	Koala Centre Road	1	9	2021	1224	71	Yes						1	
S1	Koala Centre Road	1	9	2021	1319	87	Yes						1	
S1	Koala Centre Road	1	9	2021	2005	136	Yes			1				
S1	Koala Centre Road	2	9	2021	0435	146	Yes			1				
S1	Koala Centre Road	2	9	2021	0633	156	Yes			1				
S1	Koala Centre Road	3	9	2021	0631	231	Yes	1						
S1	Koala Centre Road	3	9	2021	0655	236	Yes			1				

Camera No.	Locality	Day	Month	Year	Time	Image No.	Baiting Period	Fox	Fox with prey	Hare	Koala	Bush-stone Curlew	Lace Monitors	Comment
S1	Koala Centre Road	3	9	2021	1928	72	Yes			1				
S1	Koala Centre Road	4	9	2021	0730	77	Yes			2				
S1	Koala Centre Road	5	9	2021	0031	126	Yes			1				
S1	Koala Centre Road	5	9	2021	0509	131	Yes					2		
S1	Koala Centre Road	5	9	2021	0621	141	Yes			1				
S1	Koala Centre Road	5	9	2021	1746	651	Yes			1				
S1	Koala Centre Road	6	9	2021	0102	666	Yes					1		
S1	Koala Centre Road	6	9	2021	2128	86	Yes			1				
S1	Koala Centre Road	6	9	2021	2158	91	Yes			1				
S1	Koala Centre Road	7	9	2021	2344	431	Yes					1		
S1	Koala Centre Road	8	9	2021	0249	436	Yes					1		
S1	Koala Centre Road	8	9	2021	0407	440	Yes					1		
S1	Koala Centre Road	8	9	2021	0419	453	Yes					1		
S1	Koala Centre Road	8	9	2021	1930	831	Yes			1				
S1	Koala Centre Road	9	9	2021	0029	836	Yes			1				
S1	Koala Centre Road	30	9	2021	0600	27	Yes			1				
S1	Koala Centre Road	3	10	2021	1948	2141	Yes			1				
S1	Koala Centre Road	7	10	2021	1936	4016	Yes			1				
S1	Koala Centre Road	10	10	2021	1950	5116	Yes			1				
S1	Koala Centre Road	10	10	2021	2020	5121	Yes					1		
S1	Koala Centre Road	10	10	2021	2204	5126	Yes			1				
S1	Koala Centre Road	12	10	2021	2223	72	Yes	1						
S1	Koala Centre Road	12	10	2021	2333	81	Yes			1				
S1	Koala Centre Road	13	10	2021	1925	102	Yes			1				
S1	Koala Centre Road	14	10	2021	0605	116	Yes			1				

Camera No.	Locality	Day	Month	Year	Time	Image No.	Baiting Period	Fox	Fox with prey	Hare	Koala	Bush-stone Curlew	Lace Monitors	Comment
S1	Koala Centre Road	15	10	2021	0231	161	Yes			1				
S1	Koala Centre Road	15	10	2021	0332	166	Yes			1				
S1	Koala Centre Road	15	10	2021	1953	326	Yes			1				
S1	Koala Centre Road	16	10	2021	0043	336	Yes					1		
S1	Koala Centre Road	16	10	2021	0324	341	Yes			1				
S1	Koala Centre Road	17	10	2021	0119	871	Yes					1		
S1	Koala Centre Road	18	10	2021	0017	1219	Yes					1		
S1	Koala Centre Road	19	10	2021	2241	37	Yes					1		
S1	Koala Centre Road	20	10	2021	0200	46	Yes					1		
S1	Koala Centre Road	20	10	2021	2251	201	Yes					1		
S1	Koala Centre Road	21	10	2021	0028	216	Yes			1				
S1	Koala Centre Road	22	10	2021	0416	246	Yes			1				
S1	Koala Centre Road	22	10	2021	2330	271	Yes			1				
S1	Koala Centre Road	22	10	2021	2345	276	Yes			1				
S1	Koala Centre Road	23	10	2021	0057	281	Yes					1		
S1	Koala Centre Road	24	10	2021	2214	626	Yes			2				
S1	Koala Centre Road	24	10	2021	2306	632	Yes			2				
S1	Koala Centre Road	24	10	2021	2321	636	Yes			3				
S1	Koala Centre Road	25	10	2021	0601	656	Yes			1				
S1	Koala Centre Road	26	10	2021	0026	726	Yes			1				
S1	Koala Centre Road	26	10	2021	0323	736	Yes				1			

