

Wildlife profile

Swordgrass Brown Butterfly

Tisiphone abeona



The local swordgrass brown butterfly occurs abundantly in coastal north-eastern New South Wales but in Queensland has become extinct from all except one of its former coastal habitats.

This butterfly breeds in wet coastal grasslands, shady water courses or sub-coastal rainforest, with large stands of the swordgrass *Gahnia clarkei* or *Gahnia sieberi*. The swordgrass is utilised as a larval food plant in late summer and autumn, when the softer leaf texture allows survival of first-instar larvae. The female butterfly lays a single egg on the young leaves of the swordgrass. Larvae feed at night on the softer leaves and shelter by day at the base of the leaves. Pupation usually occurs on the food plant or on other plants growing nearby. Most adults remain close to the breeding sites but sometimes males congregate on nearby hilltops.

Extensive and dense areas of swordgrass (actually a sedge) occur within the swamp forests surrounding Koala Beach estate, forming ideal breeding habitat for this conspicuous butterfly.



Contractors carry out restoration work in Koala Beach bushland.



Gahnia clarkei



Gahnia sieberi

Contacts

Tweed Shire Council contacts

Marama Hopkins | 02 6670 2787
(Wildlife & Habitat Management)

John Turnbull | 02 6670 2732
(Bushland and Fire Management)

Pamela Gray | 02 6670 2778
(Feral Animal Control)

Tweed Shire Council Rangers

02 6670 2400 | 1800 818 326 (after hours)

Tweed Valley Wildlife Carers

24-Hour Wildlife Hotline | 02 6672 4789

Friends of the Koala

24-Hour Koala Rescue Hotline | 02 6622 1233

Koala Beach website

<http://www.tweed.nsw.gov.au/koalabeach>

SPRING 2018

WILDLIFE
PROFILE
SWORDGRASS
BROWN
BUTTERFLY



Koala Beach

Wildlife & Habitat Newsletter



Wildlife Protection Areas

In accordance with Council's Wildlife Protection Area Policy, all public land at Koala Beach is now a Wildlife Protection Area, where dogs and cats are prohibited.

Under the Companion Animals Act, Council Rangers can issue Penalty Infringement Notices to dog and/or cat owners for having their pet in a Wildlife Protection Area.

Wildlife Protection Areas provide safe, high quality habitats, free from the impacts of cats and dogs, for Tweed's native fauna.

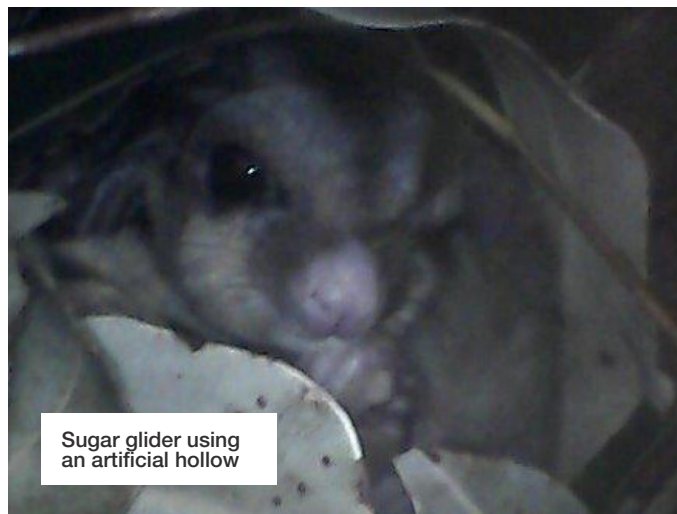
To find out more about Wildlife Protection Areas go to www.tweed.nsw.gov.au/WildlifeProtectionAreas

A bit of history: Koala Beach Wildlife and Habitat Management Committee

The development of Koala Beach Estate was approved on the condition that the wildlife and habitats within and around the estate continued to persist into the future, alongside the residential development. Various management plans and conditions of consent were developed as part of the approval to ensure the ongoing preservation of these values.

The Koala Beach Wildlife and Habitat Management Committee was established to oversee implementation of the actions in each of the separate species, habitat and environmental management plans, which were collated in the document 'Overall Management Guidelines for the Koala Beach Wildlife and Habitat Management Committee'.

The guidelines can be downloaded from the website www.tweed.nsw.gov.au/koalabeach



Sugar glider using an artificial hollow

Is there still a role for the Committee?

Are you interested in taking part in the Committee? Attending meetings? Talking to your neighbours and friends about wildlife and habitat management in Koala Beach?

Everyone's busy lives have meant that people found it increasingly difficult to attend regular meetings in recent years, and meetings were put on hold. A few people have recently expressed interest in re-forming the committee.

If you'd like to get involved, please get in touch (contact details below). If there is enough interest, we'll try to find a time that works for everyone and kick off meetings again. Or do you think there's a better way to stay informed and get involved? Please let us know!

Koala Beach special rate

Each year, property owners within Koala Beach pay a special rate levy. This provides for some exceptional environmental programs to be undertaken. This levy funds on-ground work to protect and enhance the biodiversity within this unique estate.

Some of the programs that are funded by the levy include:

- habitat restoration planning and on-ground works such as weed control and habitat planting
- fox and wild dog control through monitoring, trapping, fox den location and destruction
- glossy black-cockatoo monitoring and nest box provision
- nest box installation and maintenance for lorikeets, gliders and other native fauna
- additional ranger patrols
- monitoring and management of threatened koala, blossom bat and planigale populations
- community education through information days, additional road signage and this newsletter.

Where does the special rate go?

Here's a summary of how funds were spent in the 2017-2018 financial year:



HABITAT RESTORATION

- Restoration work around stormwater detention ponds to exclude cane toads and improve habitat quality for native fauna.
- Regular maintenance and extension of primary weed control throughout 10 work zones is maintaining bushland quality and supporting natural regeneration.

FERAL ANIMAL CONTROL

- Included ongoing running of remote camera monitoring program.
- Extensive 1080 baiting and trapping for foxes.

SIGNAGE

- High spend this year for installation of new "no dogs no cats" pavement treatments and signage in line with regional approach to "koala zone" signage.

UPCOMING WORKS INCLUDE...

- Nest box monitoring and maintenance.
- Koala population monitoring.
- Engagement of contractor for remote camera monitoring and maintenance program.