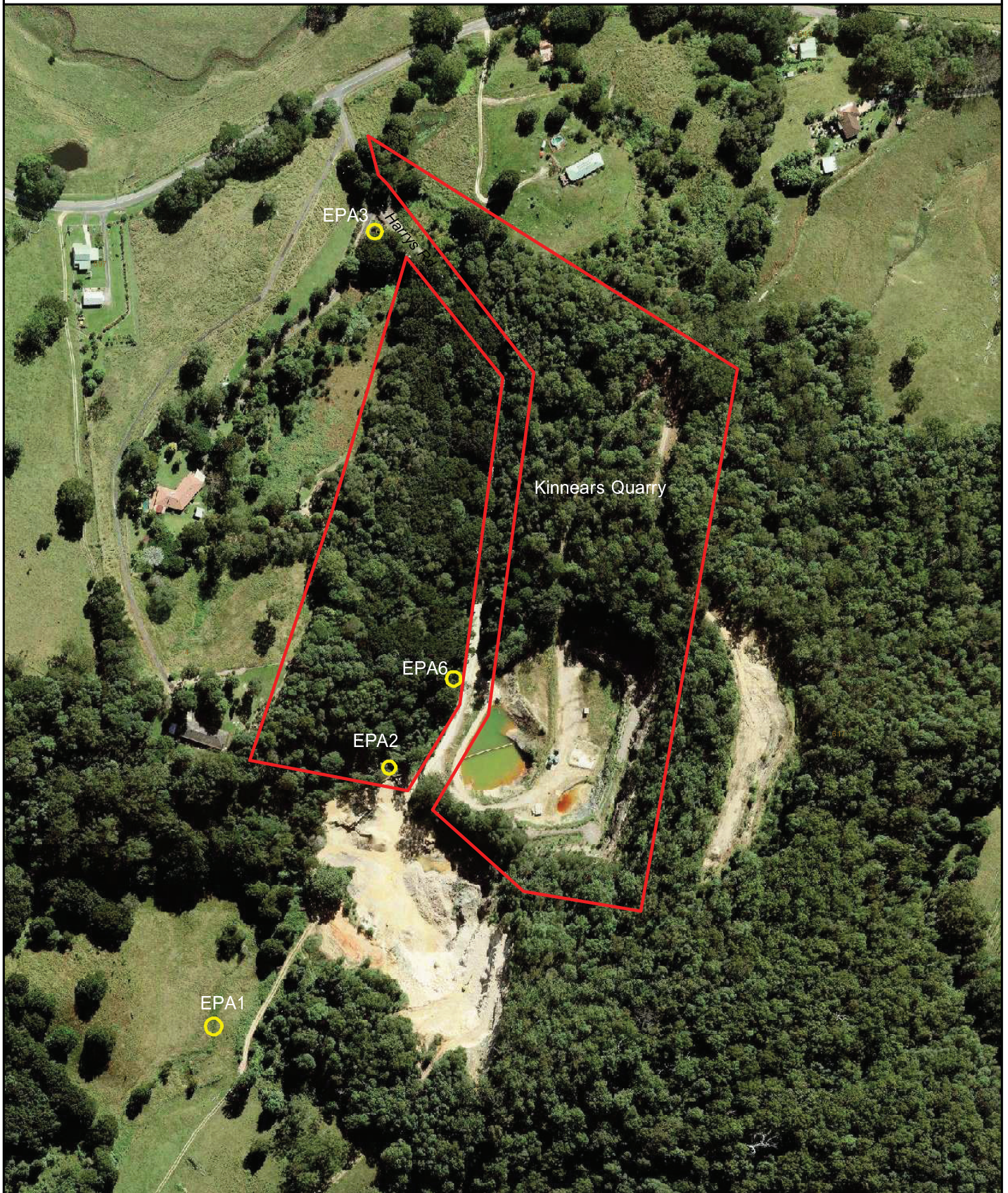


Water Quality Monitoring Sites



Qvic and Cultural Centre
PO Box 816
Murwillumbah, NSW 2484

Telephone: (02) 6670 2420
Facsimile: (02) 6670 2429
Email: gis@tweed.nsw.gov.au
Website: www.tweed.nsw.gov.au

Issue Date: 8/11/2012

Scale: 1:3500



Kinnears Quarry - Crystal Creek

Disclaimer

While every care is taken to ensure the accuracy of this data, Tweed Shire Council makes no representations or warranties expressed or implied, statutory or otherwise, about its accuracy, reliability, completeness or suitability for any particular purpose and disclaim all responsibility and all liability (including without limitation, liability and negligence) for all expenses, losses, damages (including indirect or consequential damage) and cost which may be incurred as a result of data being inaccurate in any way and for any reason. This information is supplied for the general guidance and is to be considered indicative and diagrammatic only. It should not be used for any survey or construction purpose and prior to any excavations a "Dial Before You Dig" enquiry must be made by calling 1100.

The information contained on this document remains valid for 30 days only from the date of supply.