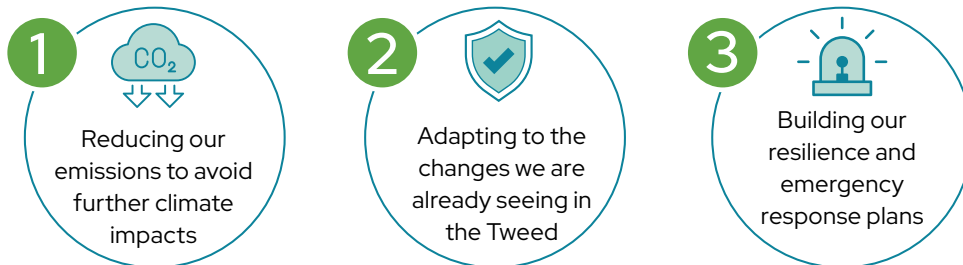


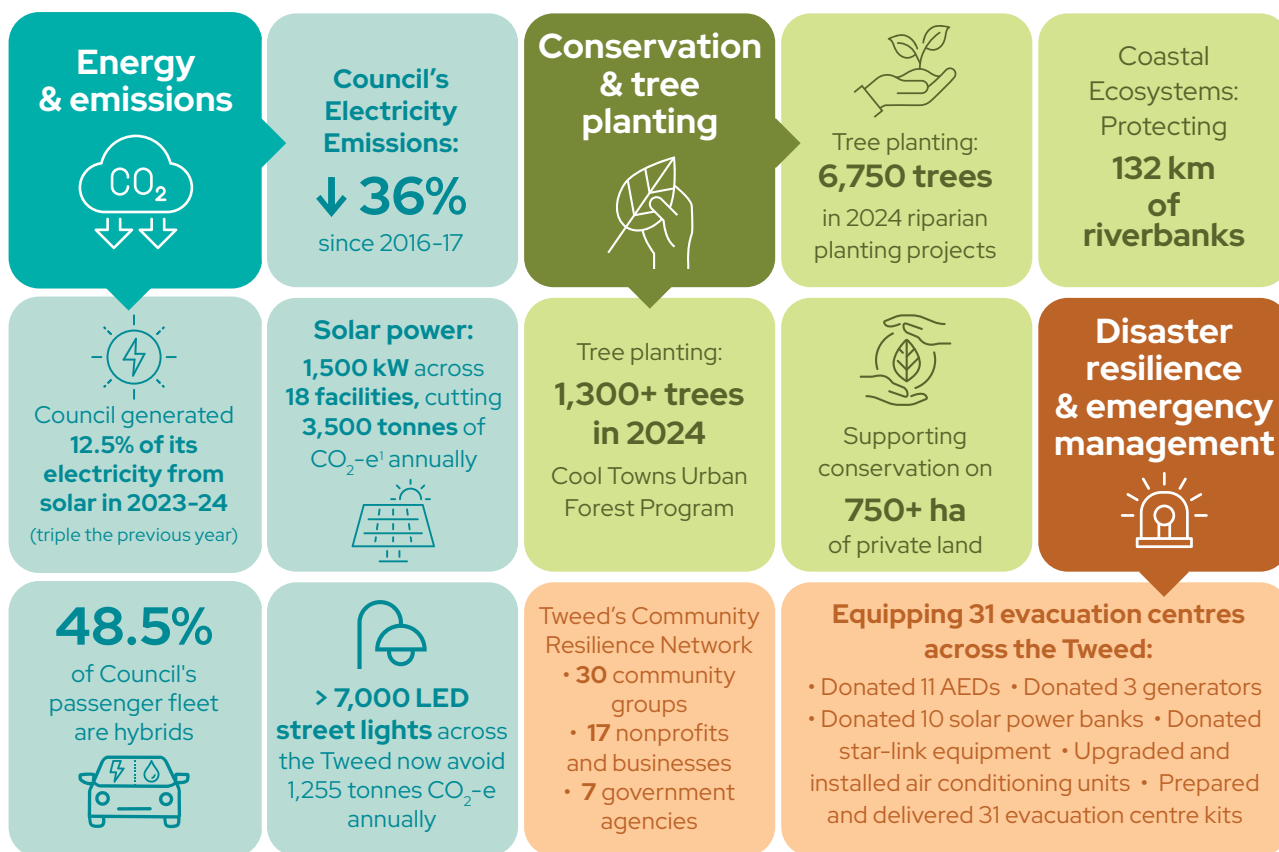
Responding to Climate change in the Tweed

In 2019, Tweed Shire Council declared a climate emergency that requires urgent action from all levels of government, businesses and community members. To ensure a positive future and create a thriving Tweed for ourselves and future generations, we can all work together on effective solutions:



<p>Council's climate targets and wins</p> 	<p>NET ZERO BY 2030</p> <p>Aiming for zero emissions from Council operations and community sources.</p>	<p>Global recognition</p> <p>Scored A- on Global Covenant of Mayors for Climate and Energy (Oceania Avg: B, Global Avg: C)</p>	<p>Community Engagement</p> 	<p>Active involvement: 120+ participants in the Community Action Network, creating 25+ community-led projects</p>
<p>36</p>  <p>Emissions reduction actions identified:</p> <ul style="list-style-type: none"> - 16 ongoing - 11 new - 9 aspirational 	<p>20 adaptation actions to improve Tweed's climate resilience:</p> <ul style="list-style-type: none"> - 8 ongoing - 11 new - 9 aspirational 	<p>Waste & recycling</p> 	<p>Climate Ready Tweed:</p> <p>252 surveys 29 interviews 50 workshop attendees</p> <p>on climate action and resilience</p>	<p>Community Climate Action Group:</p> <p>32 expressions of interest to lead grassroots community climate action</p>
<p>New sustainable procurement criteria implemented to include evaluation of environmental, social, economic and governance considerations, such as pollution, emissions, waste reduction, diversity, modern slavery and WHS.</p> 	<p>Office waste:</p> <p>↓ 13% in 2023-2024</p>	<p>Construction waste:</p> <p>86% repurposed in 2023-24</p>	<p>59 reusable nappy rebates provided to support families to reduce waste from disposable nappies</p> 	

Photo: The Bundjalung (butterfly) is a totem of the Bundjalung people. Historically common, populations of the Richmond birdwing butterfly are now stabilising thanks to restoration of their rainforest habitat.



Council's projects in progress for climate action

- **\$15.5 million for the Community Assets Program** – funding from Australian and NSW Governments for repair, restoration and improvement of parks, community buildings and recreation facilities for future disaster resilience
- **10 year plan for conservation** – to protect and improve the Tweed's vegetation cover, threatened and priority species, habitat connectivity and climate adaptation through the Conservation Strategy
- **Bray Park Tidal Protection Project** – preventing saltwater impacting Tweed's drinking water source
- **Clarrie Hall Dam** – raising the dam to secure Tweed's drinking water supply
- **Industry Land Swap** – develop a flood-free precinct for industrial land
- **Climate Action Cafe** events to promote engagement and development of **Community Climate Action Plan**
- Deliver **Climate Change Adaptation Plan**, supported by community reference group
- Prepare an **emissions reduction** strategy for the **Tweed community**
- Update Council's **emissions reduction strategy**
- **Electrify** – transition Council owned facilities from gas to electric hot water and kitchen facilities at replacement or new installation
- Implement a new **textile recovery program** to minimise clothing, linen and fabrics sent to landfill
- Finalise the **Draft Spontaneous Volunteer Framework** for emergency response
- Conduct desktop **emergency scenario exercises** for future preparedness and resilience

¹ CO₂-e means 'carbon dioxide equivalent'. CO₂-e describes all greenhouse gas emissions and their relative contribution to climate change.

Climate patterns in the Tweed are changing

Climate refers to our average weather conditions over an extended period of time. In the Tweed, we are already seeing the impact of climate change on our weather patterns, with the most significant impacts including:



Maximum temperatures
- increasing



Sea surface temperatures
- increasing



Rainfall
- variability increasing



Sea level rising
- increasing



Fire weather
- increasing



Heatwaves
- increasing

What climate change means for the Tweed community

Our collective response to climate change can protect the places we love and create benefits for our community.



Bolstering the health of our native animals, plants and enhancing waterway health



Honouring the wisdom, stewardship and adaptability of indigenous knowledge



Smarter home designs and energy use to reduce power bills



Greater use of public and active transport to reduce emissions, increase exercise and decrease chronic health rates



Long term planning and action to secure our drinking water supply and other vital infrastructure



Community connection and support for those more vulnerable to the effects of climate effects and events will strengthen our resilience



Making infrastructure, homes and communities resilient to sea level rise, flooding and bushfires.

Find out more

about Council's climate action at tweed.nsw.gov.au/climate-change

Every action makes a difference

- Shop local, especially to support local food suppliers and farmers
- Plant natives and control weeds
- Participate in citizen science activities to control pest animals
- Protect domestic pets and native wildlife by keeping cats inside and dogs on leads
- Fix leaks and use water-efficient tapware
- Use active travel and public transport
- Buy an electric vehicle for your next car
- Install solar panels on your roof or purchase green power
- Buy energy and water efficient appliances and lighting (air conditioning, hot water, ovens, washing machines and dishwashers)
- Upgrade insulation to reduce heating and cooling needs
- Reduce emissions from waste through composting, reusing materials, purchasing recycled materials and avoiding excess packaging
- Join local community resilience groups and volunteer agencies
- Know your neighbours and connect with your community.



Let's work together

Stay in touch and get involved as we work together as a community

- Find out more at Council's website tweed.nsw.gov.au
- Stay in touch via Council's e-newsletters: tweed.nsw.gov.au/newsletters
- Have your say on a range of new projects and initiatives: yoursaytweed.com.au

Contact and connect

02 6670 2400

tweed.nsw.gov.au

tsc@tweed.nsw.gov.au

PO Box 816 Murwillumbah NSW 2484

