

# Far North Coast BFMC Bush Fire Risk Management Plan 2017

## Central Byron Shire - Map Display Area

Map 6 of 8

DRAFT

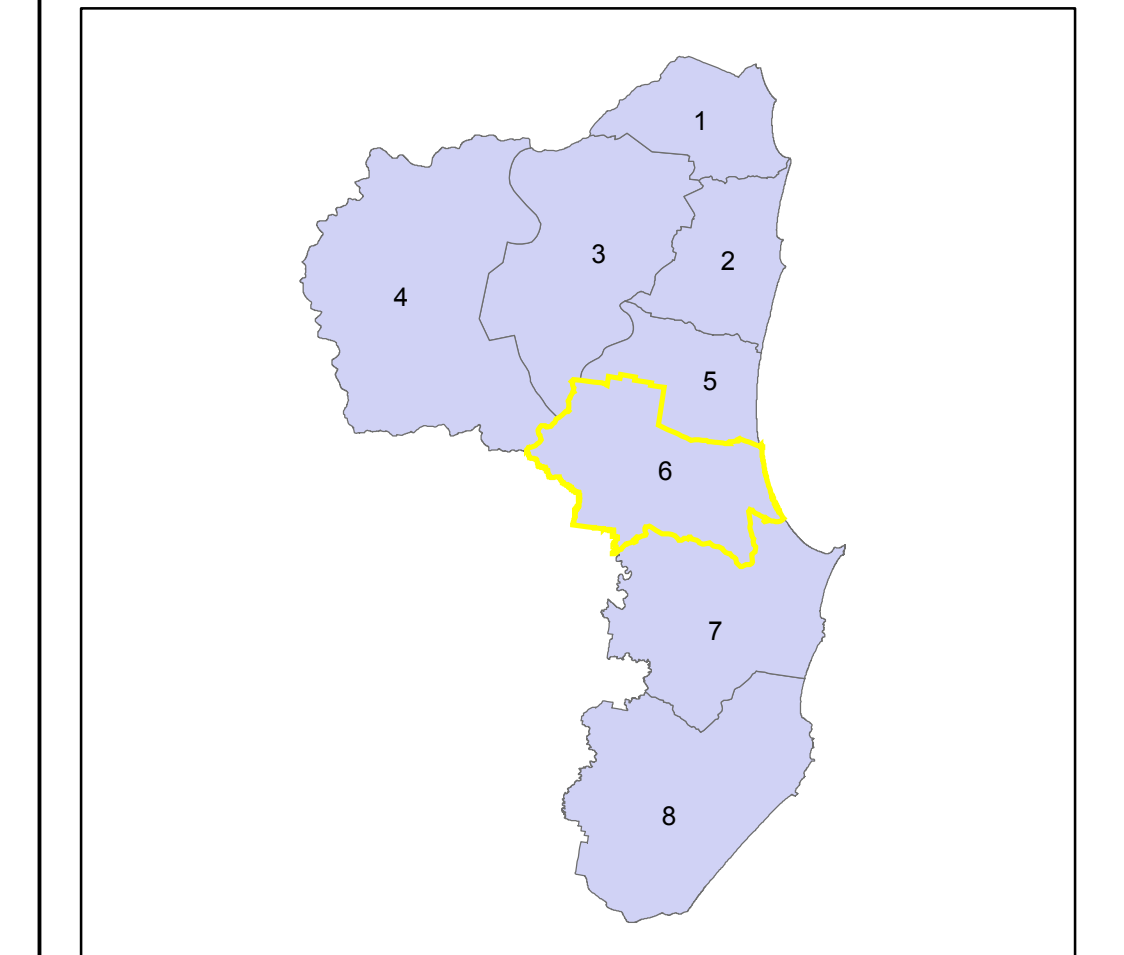
This Bush Fire Risk Management Plan (BFRMP) has been prepared by the Far North Coast Bush Fire Management Committee (BFMC) pursuant to section 52 of the *Rural Fires Act 1997*.

The aim of this BFRMP is to reduce the adverse impact of bush fires on life, property and the environment.

The objectives of this BFRMP are to:

- reduce the number of human-induced bush fire ignitions that cause damage to life, property or the environment;
- manage fuel to reduce the spread and intensity of bush fires while minimising environmental/ecological impacts;
- reduce the community's vulnerability to bush fires by improving its preparedness; and
- effectively contain fires with a potential to cause damage to life, property and the environment.

This map forms part of the BFRMP for the Far North Coast BFMC, covering the local government areas of Ballina, Byron and Tweed. It should be viewed in conjunction with the accompanying BFRMP document which provides further details on the BFMC area, the assets assessed and the risk assessment process used.



**Review**  
Under the *Rural Fires Act 1997* this plan must be reviewed and updated within each successive five year period following the constitution of the BFMC. The Far North Coast BFMC will also review this plan as necessary. This may be triggered by a range of circumstances, including but not limited to:

- changes to the BFMC area, organisational responsibilities or legislation;
- changes to the bush fire risk in the area; or
- following a major fire event.

**Assets**  
This BFRMP identifies the assets that are considered by the Far North Coast BFMC and community to be at risk from bush fires, assesses the bush fire risk to each asset and assigns treatments designed to mitigate the risk. Assets in the BFMC area identified as requiring treatments are listed in the assets table. Other assets within the BFMC area that were assessed as not requiring treatments within the life of this plan are listed in the appendix to the BFRMP document. The Map Ref number "NA" denotes non-spatial assets.

**Treatments**  
Specific treatments assigned to assets in the Far North Coast area are listed in the treatments table and linked to the assets which they are designed to protect. Standard BFMC wide treatments (i.e. not linked to a specific asset) which occur on an ongoing basis within the BFMC area are:

- reviewing the bush fire prone land map;
- ensuring developments in the bush fire prone land comply with Planning for Bush Fire Protection;
- using the Local Environment Plan's (LEPs) to control development in areas with a bush fire risk;
- varying the standard bush fire danger period as required;
- requiring permits during bush fire danger periods;
- prosecution of arsonists/offenders;
- investigation of bush fire causes;
- normal fire suppression activities;
- assessing and managing compliance with strategic fire-fighting resource allocation management systems;
- preparation of a S&S Operations Coordination Plan;

Note on LMAZ: All areas not specifically mapped as an APZ, SFAZ or FEZ are considered as LMAZ for this risk management plan. For areas identified by an LMAZ polygon on the map, please refer to the BFRMP document for the specific land management objectives.

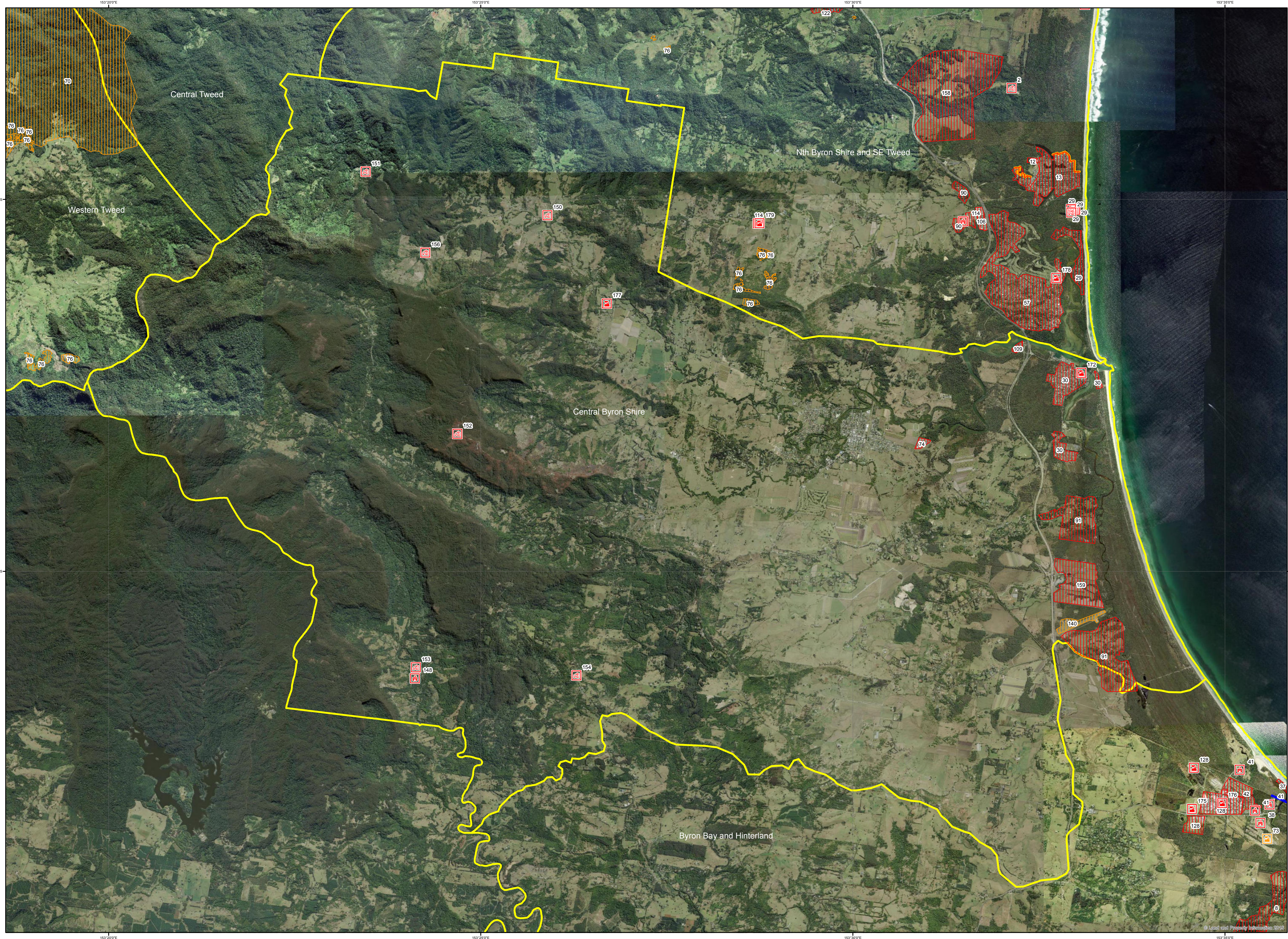
Zone	Purpose	Suppression	Zone
<b>Asset Protection Zone</b>	To protect human life, property and highly valued public assets and values.	To enable the safe use of <b>Direct Attack</b> suppression strategies within the zone. To minimise bush fire impacts on undefended assets.	As per RFS document <i>Standards for Asset Protection Zones</i> .
<b>Strategic Fire Advantage Zone</b>	To provide strategic areas of fire protection advantage which will reduce the speed and intensity of bush fires, and reduce the potential for spot fire development. To aid containment of wildfires to existing management boundaries.	To improve the likelihood and safe use of <b>Parallel Attack</b> suppression strategies within the zone. <b>Indirect Attack</b> (back burning) in high to very high fire weather conditions within the zone. To reduce the likelihood of: Crown fire development within the zone; and/or Spot fire ignition potential from the zone.	Zone width related to suppression objectives and dependant upon: - Topography - Aspect - Spotting propensity for spot fire - Location of adjacent fire breaks - Mosaic pattern of treatment Assess Overall Fuel Hazard (OFH) once vegetation communities reach minimum fire thresholds within this plan. Management practices should aim to achieve mosaic fuel reduction patterns so that the majority of the SFAZ has an OFH of less than high.
<b>Land Management Zone</b>	To meet relevant land management objectives in area where APZs or SFAZs are not appropriate.	As per the land management and fire protection objectives of the responsible land management agency. To reduce the likelihood of spread of fires. To undertake mosaic burning.	As appropriate to achieve land management, e.g. heritage and/or fire protection e.g. broad scale mosaic burning objectives.
<b>Fire Exclusion Zone</b>	To exclude bush fires.	NA	Variable dependant on size of fire sensitive area requiring protection.

**Disclaimer**  
The Far North Coast BFMC makes every effort to ensure the quality of the information available on this map. Before relying on the information on this map, users should carefully evaluate its accuracy, currency or completeness of the information. Copyright: Far North Coast BFMC 2017.

Authorized by ..... of Far North Coast BFMC.  
Date created: Tuesday, 18 April 2017  
BFRMP version 2.1.26.0

Map Ref	Asset name	Asset type	Subtype	Risk level	Priority	Treatment
151	Upper Main Arm	Human	Residential	Extreme	1A	T128
NA	Byron Shire Coastal Tourism Industry	Economic	Tourist and	Extreme	1B	(1)
7	Multiple Occupancies	Human	Residential	Extreme	1B	T4;8;160
152	Koonyum Range	Human	Residential	Extreme	1B	T130;131
153	Upper Coopers Creek	Human	Residential	Extreme	1B	T132
154	Goonengery	Human	Residential	Extreme	1B	T133
156	Palmwood Multiple Occupancy	Human	Residential	Extreme	1B	T134
NA	Australasian Bittern	Environment	Endangered	Extreme	1C	T147
NA	Narrow-leaf Finger Fern	Environment	Endangered	Very High	2A	T92;93
NA	Flea's barred frog	Environment	Endangered	Very High	2A	T92;148;93
NA	Nightcap Plectranthus	Environment	Endangered	Very High	2A	T92;93
NA	Banana Farms	Economic	Agricultural	Very High	2C	T33;120
30	Brunswick Heads	Human	Residential	Very High	2C	T63;64
NA	Hinterland Rural Dwellings on Forested	Human	Residential	High	3A	T33;81;5;41
74	Mullumbimby Industrial Estate	Human	Other	High	3A	T33
150	Main Arm	Human	Residential	High	3A	T139
159	Blues Fest Site	Human	Special Fire	High	3A	T145
NA	Byron Shire Hinterland Tourism Industry	Economic	Tourist and	High	3B	T2;82
NA	Wilson's Creek Catchment	Economic	Drinking	Medium	4	T165
NA	Rural Areas Grassland and Camphor	Human	Residential	Medium	4	T21
91	Tyagarah	Human	Residential	Medium	4	T64
109	Ferry Reserve Caravan Park	Human	Special Fire	Medium	4	T62
148	Upper Coopers Creek Primary School	Human	Special Fire	Medium	4	T54
140	Tyagarah Airfield	Economic	Infrastructure	Low	NA	T99
172	NSP: Banner Park	Human	Other	Low	NA	T166
177	NSP: Durrumbul Primary School	Human	Other	Low	NA	T166

(1) T157;2;60;62;111



0 0.55 1.1 1.65 2.2 km @ A0

**Assets**

- Human - Residential
- Human - Other
- Special Fire Protection - Locally Important
- Economic - Agricultural
- Economic - Commercial
- Economic - Infrastructure
- Economic - Tourism and Recreational
- Economic - Mines
- Commercial - Forestry
- Drinking Water Catchments
- Environmental - Locally Important
- Environmental - Vulnerable (Species)
- Environmental - Endangered (Species)
- Cultural - Aboriginal Heritage
- Cultural - Other
- Cultural - Non-Indigenous

**Bush Fire Management Zones**

- Fire Exclusion Zone (FEZ)
- Asset Protection Zone (APZ)
- Strategic Fire Advantage Zone (SFAZ)
- Land Management Zone (LMAZ)

**Base Data Layers**

- Major Roads Sealed
- Major Roads Unsealed
- Secondary Road Sealed
- Secondary Road Unsealed
- Local Road Sealed
- Local Road Unsealed
- Local Road Unspecified
- AVD Track Unspecified
- Path
- Heavy Rail
- Light Rail
- Heavy Rail Sidings
- Drainage Perennial
- Drainage Non-Perennial
- Hydro-Line Perennial
- Hydro-Line Non-Perennial
- Contour (100m)
- Contour (50m)
- Map Display Area
- Local Government Area
- Crown Land
- State Forests
- National Park

\*Note - Some base data layers may not be displayed on map

ID	Treatment strategy	Action	Agencies (Support)
T60	Hazard Reduction	Maintain Strategic Fire Advantage Zone	ARTC
T62	Community Education	Disseminate Community Education Materials	FRNSW, RFS (LGA, OEH)
T63	Property Planning	Develop a Community Protection Plan	RFS (TI CL, LGA, OEH, FRNSW, Private)
T92	Ignition Management	Attempt to exclude fire from habitat	TI CL, LGA, OEH, FRNSW, Private
T111	Property Planning	Implement APZ and SFAZ	TI CL, LGA, OEH (FRNSW, RFS)
T128	Community Education	Community Engagement for residents	RFS
T148	Preparedness	Avoid ground disturbance in known locations	TI CL, LGA, OEH, Private (FRNSW, RFS)
T157	Property Planning	Develop a Community Protection Plan	RFS (TI CL, LGA, OEH, FRNSW, Private)
T2	Hazard Reduction	Maintain an Asset Protection Zone on the	TI CL, OEH, Private
T4	Property Planning	Create pre-incident plans	Private (TI CL, LGA, OEH, RFS)
T8	Community Education	Distribute community education material	LGA, RFS
T64	Property Planning	Maintain APZ and SFAZ	OEH (TI CL, LGA, FRNSW)
T63	Community Education	Disseminate community engagement materials	TI CL, LGA, OEH
T130	Hazard Reduction	Implement OEH Fire Management Strategy	OEH (RFS)
T131	Community Education	Facilitate Community Firewise meetings	LGA, OEH, RFS (Private)
T132	Community Education	Facilitate Community Engagement	LGA, RFS (TI CL)
T133	Hazard Reduction	Implement Fire Management Strategy	OEH (LGA, RFS)
T134	Community Education	Community Engagement	LGA, RFS (TI CL)
T160	Hazard Reduction	Maintain an APZ adjacent to assets at risk	Private (TI CL, LGA, RFS)
T147	Hazard Reduction	Implement appropriate fire regimes	TI CL, LGA, OEH, Private, RMS,
T41	Preparedness	Maintain Fire Trails	TI CL, LGA, Private (RFS)
T54	Community Education	Maintain Schools community education program	FRNSW, RFS
T81	Hazard Reduction	Maintain an APZ adjacent to assets at risk	Private (TI CL, LGA, FRNSW, RFS)
T5	Hazard Reduction	Implement Strategic Fire Advantage Zones	TI CL, LGA, Private (FRNSW, RFS)
T33	Community Education	Annual Media Release	LGA, FRNSW, RFS
T120	Hazard Reduction	Issue Hazard Reduction Certificates	RFS (LGA)

ID	Treatment strategy	Action	Agencies (Support)
T139	Community Education	Community Engagement	RFS (LGA)
T145	Hazard Reduction	Maintain APZ's around assets and property	Private (LGA, OEH)
T21	Hazard Reduction	Maintain an Asset Protection Zone on the	Private (TI CL, LGA, OEH, FRNSW, LGA)
T99	Hazard Reduction	Maintain slashing regime	LGA
T165	Hazard Reduction	Maintain an Asset Protection Zone	Rous Water
T166	Hazard Reduction	Maintain fuels in accordance with Guidelines	TI CL, LGA, Private (RFS)