

# Far North Coast BFMC Bush Fire Risk Management Plan 2017

Western Tweed - Map Display Area

Map 4 of 8

DRAFT

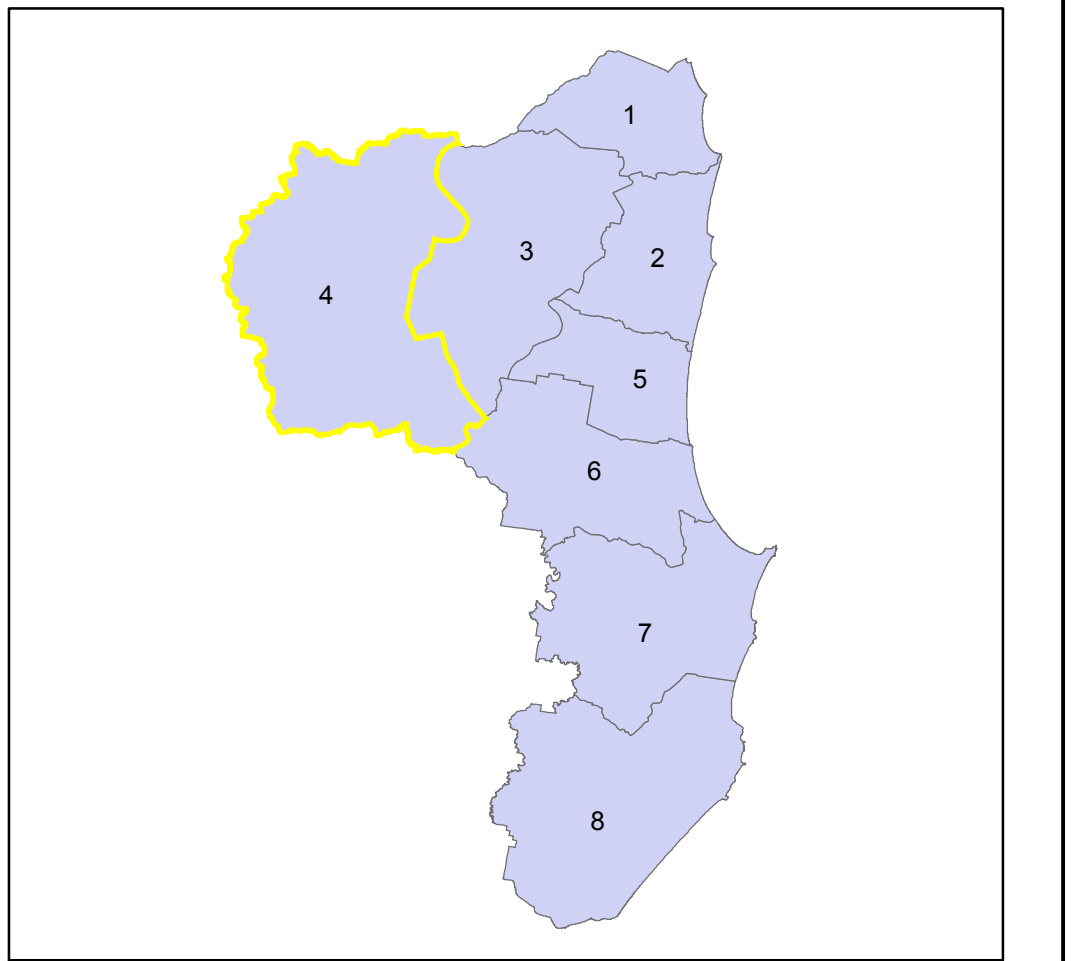
This Bush Fire Risk Management Plan (BFRMP) has been prepared by the Far North Coast Bush Fire Management Committee (BFMC) pursuant to section 52 of the *Rural Fires Act 1997*.

The aim of this BFRMP is to reduce the adverse impact of bush fires on life, property and the environment.

The objectives of this BFRMP are to:

- reduce the number of human-induced bush fire ignitions that cause damage to life, property or the environment;
- manage fuel to reduce the spread and intensity of bush fires while minimising environmental/ecological impacts;
- reduce the community's vulnerability to bush fires by improving its preparedness; and
- effectively contain fires with a potential to cause damage to life, property and the environment.

This map forms part of the BFRMP for the Far North Coast BFMC, covering the local government areas of Ballina, Byron and Tweed. It should be viewed in conjunction with the accompanying BFRMP document which provides further details on the BFMC area, the assets assessed and the risk assessment process used.



**Review**  
Under the *Rural Fires Act 1997* this plan must be reviewed and updated within each successive five year period following the constitution of the BFMC. The Far North Coast BFMC will also review this plan as necessary. This may be triggered by a range of circumstances, including but not limited to:

- changes to the BFMC area, organisational responsibilities or legislation;
- changes to the bush fire risk in the area; or
- following a major fire event.

**Assets**  
This BFRMP identifies the assets that are considered by the Far North Coast BFMC and community to be at risk from bush fires, assesses the bush fire risk to each asset and assigns treatments designed to mitigate the risk. Assets in the BFMC area identified as requiring treatments are listed in the assets table. Other assets within the BFMC area that were assessed as not requiring treatments within the life of this plan are listed in the appendix to the BFRMP document. The Map Ref number "NA" denotes non-spatial assets.

**Treatments**  
Specific treatments assigned to assets in the Far North Coast area are listed in the treatments table and linked to the assets which they are designed to protect. Standard BFMC wide treatments (i.e. not linked to a specific asset) which occur on an ongoing basis within the BFMC area are:

- reviewing the bush fire prone land map;
- ensuring developments in the bush fire prone land comply with Planning for Bush Fire Protection;
- using the Local Environment Plan's (LEPs) to control development in areas with a bush fire risk;
- varying the standard bush fire danger period as required;
- requiring permits during bush fire danger periods;
- prosecution of arsonists/offenders;
- investigation of bush fire cause;
- normal fire suppression activities;
- assessing and managing compliance with strategic fire-fighting resource allocation management systems;
- preparation of a S&S Operations Coordination Plan;

Note on LMZ: All areas not specifically mapped as an APZ, SFAZ or FEZ are considered as LMZ for this risk management plan. For areas identified by an LMZ polygon on the map, please refer to the BFRMP document for the specific land management objectives.

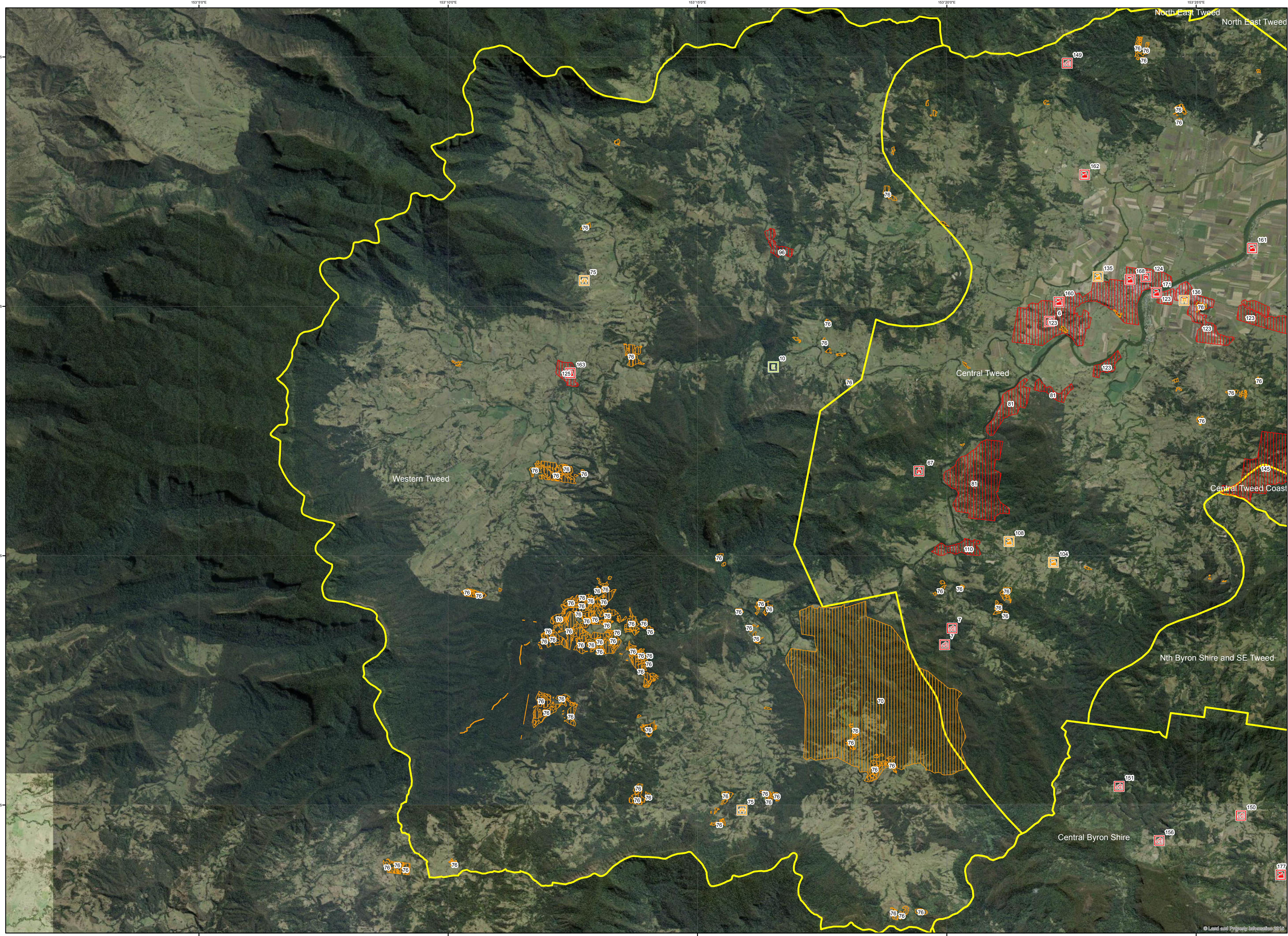
Asset Protection Zone	Purpose	Suppression	Zone
<b>Asset Protection Zone</b>	To protect human life, property and highly valued public assets and values.	To enable the safe use of <b>Direct Attack</b> suppression strategies within the zone. To minimise bush fire impacts on undefended assets.	As per RFS document Standards for Asset Protection Zones.
<b>Strategic Fire Advantage Zone</b>	To provide strategic areas of fire protection advantage which will reduce the speed and intensity of bush fires, and reduce the potential for spot fire development. To aid containment of wildfires to existing management boundaries.	To improve the likelihood and safe use of <b>Parallel Attack</b> suppression strategies within the zone. <b>Indirect Attack</b> (back burning) in high to very high fire weather conditions within the zone. To reduce the likelihood of Crown fire development within the zone. and/or Spot fire ignition potential from the zone.	Zone width related to suppression objectives and dependant upon: - Topography - Aspect - Spotting propensity - Location of adjacent fire breaks - Mosaic pattern of treatment Assess Overall Fuel Hazard (OFH) once vegetation communities reach minimum fire thresholds within this plan. Management practices should aim to achieve mosaic fuel reduction patterns so that the majority of the SFAZ has an OFH of less than high.
<b>Land Management Zone</b>	To meet relevant land management objectives in area where APZs or SFAZs are not appropriate.	To reduce the likelihood of spread of fires. To undertake mosaic burning.	As per the land management and fire protection objectives of the responsible land management agency. To reduce the likelihood of spread of fires. To undertake mosaic burning.
<b>Fire Exclusion Zone</b>	To exclude bush fires.	N/A	Variable dependant on size of fire sensitive area requiring protection.

**Disclaimer**  
The Far North Coast BFMC makes every effort to ensure the quality of the information available on this map. Before relying on the information on this map, users should carefully evaluate its accuracy, currency or completeness of the information. Copyright: Far North Coast BFMC 2017.

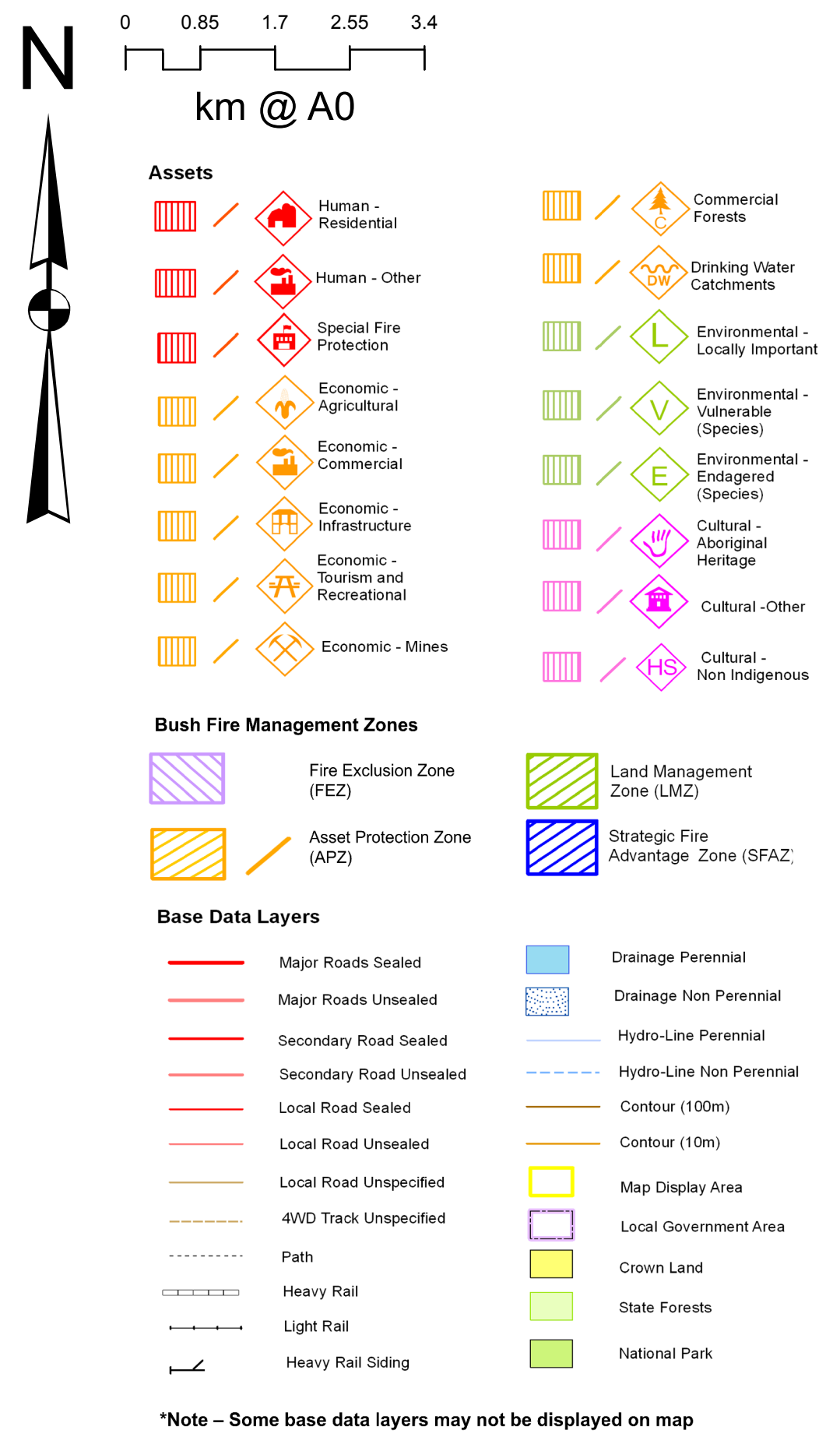
The Far North Coast BFMC can not guarantee and assumes no legal liability or responsibility for the accuracy, currency or completeness of the information. Copyright: Far North Coast BFMC 2017.

Authorized by \_\_\_\_\_ of Far North Coast BFMC.  
Date created: Wednesday, 19 April 2017

BFRMP version 2.1.26.0



Map Ref	Asset name	Asset type	Subtype	Risk level	Priority	Treatment
NA	Site Group Three Sites	Cultural	Aboriginal	Extreme	1B	T117:161
7	Multiple Occupancies	Human	Residential	Extreme	1B	T4:8:160
10	Coast Euodia	Environment	Endangered	Extreme	1B	T92:93
NA	Site Group One Sites	Cultural	Aboriginal	Very High	2A	T117:161
NA	Mountain Frog	Environment	Endangered	Very High	2A	T148:92:93
NA	Black-Breasted Button-Quail	Environment	Endangered	Very High	2A	T93:147
47	Communications Towers Tweed, Byron	Economic	Infrastructure	Very High	2A	T146
76	Private Forestry Plantations	Economic	Commercial	Very High	2A	T112
NA	Banana Farms	Economic	Agricultural	Very High	2C	T33:120
NA	Hinterland Rural Dwellings on Forested	Human	Residential	High	3A	T33:81:5:41
70	Clarrie Hall Dam Catchment	Economic	Drinking	High	3A	T41
75	Tweed Shire Hinterland Tourism Industry	Economic	Tourist and	High	3A	T2:62
NA	Rural Tourist Facilities	Human	Special Fire	High	3B	T62:21:5
NA	Tree Crops	Economic	Agricultural	Medium	4	T114
96	Chillingham Village	Human	Residential	Medium	4	T88
125	Tyalgum Village	Human	Residential	Medium	4	T33
163	NSP: Tyalgum Sports Field	Human	Other	Low	NA	T166



ID	Treatment strategy	Action	Agencies (Support)
T62	Community Education	Disseminate Community Education Materials	FRNSW, RFS (LGA, OEH)
T92	Ignition Management	Attempt to exclude fire from habitat	Ti CL, LGA, OEH, FRNSW, Private,
T148	Preparedness	Avoid ground disturbance in known locations	Ti CL, LGA, OEH, Private (FRNSW,
T2	Hazard Reduction	Maintain an Asset Protection Zone on the	Ti CL, OEH, Private
T4	Property Planning	Create pre-incident plans	Private (Ti CL, LGA, OEH, RFS)
T8	Community Education	Distribute community education material	LGA, RFS
T93	Community Education	Disseminate community engagement materials	Ti CL, LGA, OEH
T117	Hazard Reduction	Implement AHIMS Management Conditions	Ti CL, LGA, OEH, FRNSW, Private,
T160	Hazard Reduction	Maintain an APZ adjacent to assets at risk	Private (Ti CL, LGA, RFS)
T161	Hazard Reduction	Maintain APZ and SFAZ	Local Aboriginal Land Councils
T147	Hazard Reduction	Implement appropriate fire regimes	Ti CL, LGA, OEH, Private, RMS,
T41	Preparedness	Maintain Fire Trails	Ti CL, LGA, Private (RFS)
T81	Hazard Reduction	Maintain an APZ adjacent to assets at risk	Private (Ti CL, LGA, FRNSW, RFS)
T112	Property Planning	Prepare and implement regional fire plan	Private, FCNSW
T146	Hazard Reduction	Maintain APZ surrounding asset	CA, Ti CL, LGA, OEH, Private,
T5	Hazard Reduction	Implement Strategic Fire Advantage Zones	Ti CL, LGA, Private (FRNSW, RFS)
T33	Community Education	Annual Media Release	LGA, FRNSW, RFS
T120	Hazard Reduction	Issue Hazard Reduction Certificates	RFS (LGA)
T21	Hazard Reduction	Maintain an Asset Protection Zone on the	Private (Ti CL, LGA, OEH, FRNSW,
T88	Community Education	Community meeting	RFS
T114	Community Education	Maintain Farm Firewise Program	RFS
T166	Hazard Reduction	Maintain fuels in accordance with Guidelines	Ti CL, LGA, Private (RFS)