

Jack Evans Boat Harbour Plan of Management

Appendix C2

**Report – Public Exhibition Feedback Report for the draft
Jack Evans Boat Harbour Plan of Management – Stage 2**



THIS PAGE IS BLANK

Table of Contents



1	Executive Summary.....	2
2	Background	3
3	Previous Community Consultation	6
4	Objectives.....	11
5	Methodology.....	11
6	Community Response	13
7	Appendix A - Excerpt from Tweed Shire Open Space Strategy 2019-2029 Community Consultation Report Stage 2, August 2018.	25
8	Appendix B – Sample media	26



1 Executive Summary

The purpose of this document is to report the key findings from the public exhibition of the draft Jack Evans Boat Harbour Plan of Management. The public exhibition is Stage 2 of the community consultation for the plan of management.

Prior to the development of the draft Plan of Management, Stage 1 of the community consultation was undertaken in late 2018 which sought to provide an opportunity for the community to be involved and share what they believe is important about the area, the facilities, and how they would like to see the precinct managed in the future. The number (1,092 submissions), demographics and nature of the survey responses suggested that the findings provided a useful and meaningful snapshot of community opinion. The draft Plan of Management was informed by the results of this feedback.

The draft Plan of Management was placed on public exhibition and the community was invited to provide feedback from 26 October till 8 December 2020 in accordance with the *Local Government Act 1993*.

Community feedback comprised 40 submissions. To summarise, the key messages received from Stage 2 were as follows:

- Overall, people are happy with the proposed plan of management (10).
- Concerns were raised over social issues including homelessness and anti-social behaviour within the park (12). Eight submissions stated that the homeless, alcohol or drug users and illegal campers need to be moved on while three submissions acknowledged the matter is a complex issue that requires collaboration with all stakeholders.
- 12 submissions conveyed support for the activation of the precinct by way of markets and special events (5) or a small kiosk or food vans (5).
- 11 submissions conveyed support for the provision of additional facilities, in particular natural shade (6), the Goorimahbah inclusive playground expansion (6) and picnic facilities (4). Support was also conveyed for the storage shed for use by the hire craft operator subject to good design (3).
- Support was conveyed for retention of the area for passive recreation and peaceful enjoyment (7).
- Objections were received regarding additional permanent attractions (3), commercialising the area (3), an inflatable water park (2), a land based water park (1) and food vans or café (2).
- Support was conveyed for the Goorimahbah – Place of Stories and acknowledgement of the Aboriginal cultural heritage significance of the area (5).
- Compliance concerns were raised regarding boating in particular (3).
- Large scale proposals were suggested which included a marina precinct (1), convention centre (2) and a free water play park (4).
- Suggestions were made for improved boating access and facilities (5) which may involve dividing the harbour into a boating area and a non-motorised craft or swimming area (2).
- Support was conveyed for improvements to diving and snorkelling facilities (4) and improved fishing facilities (2).

Although the number of submissions were fewer, the results of Stage 2 community consultation were found to be generally consistent with Stage 1 feedback and supportive of the draft plan of management as exhibited.

2 Background

Jack Evans Boat Harbour (JEBH) Reserve Trust resolved at its meeting Thursday 18 May 2017 that:

Tweed Heads Jack Evans Boat Harbour Reserve Trust prepares a Plan of Management for the Jack Evans Boat Harbour in consultation with the community and with regard to the current event guidelines for the Jack Evans Boat Harbour.

On 15 February 2018, the main issues that could have influenced the proposed timeline of the preparation of the Plan of Management were reported to the JEBH Reserve Trust. The main issues involved:

- Consultation with the Aboriginal Advisory Committee regarding 'Goorimahbah – Place of Stories'
- Land Tenure
- Divergence of views between community stakeholders
- Homeless use of the park
- Cross border impacts with the Gold Coast City Council
- State Government development plans for Crown Land surrounding JEBH
- The proposed all access playground
- The RSL cenotaph and the RSL's expectations
- The existing aquatic hire operation and conflicts with use of the area by cross border time share resorts.

Council resolved to acknowledge the cultural management considerations; acknowledge the existing strategies and community consultation the draft Plan must consider; sought for clarity regarding any plans the State Government has for the development of Crown Land within and or surrounding JEBH; and acknowledged that the 12 month time line for delivery of the draft plan of management will be contingent on agreement by the Aboriginal Advisory Committee to finalised plans for Goorimahbah.

Land tenure and scope of plan of management

JEBH comprises several separate Crown reserves and Council was previously not nominated as Crown Land Manager for all of these. Council has no power to authorise any third party use, occupation or plans of management for the Crown reserves which it is not Crown Land Manager.

A proposed scope for the draft Plan of Management highlighting the various unresolved tenure issues was reported to Council on 19 July 2018. Council resolved to defer the matter awaiting clarification from NSW Crown Lands.

In order to continue the Plan of Management process and move forward with the community consultation, an interim scope for the proposed Plan was recommended and accepted by Councillors (30 August 2018) as mapped following.



Scope of the proposed draft Plan of Management during Stage 1 of Community Consultation in late 2018.

On 17 April 2019, Council resolved to exclude all lots subject to NSW Aboriginal Land Council land claim situated north of Coral Street from the draft Plan and to develop a separate plan of management for that site in consultation with the NSW Aboriginal Land Council.

Further, following meeting with representatives from the NSW Department on 23 May 2019, Council resolved at its meeting on 20 June 2019 to request the Minister that Council be appointed Crown Land Manager of the land within the Precinct that is currently not under management. The draft JEBH Plan of Management endorsed by Council on 15 August 2019 was compiled on the basis that the Minister would accept Council's request to be appointed Crown Land Manager.

On 9 December 2019, Council received correspondence that not all of Council's requests were supported on the grounds that appointment would not be compliant with *Native Title Act 1993* (cth).

Following receipt of feedback from the NSW Department regarding the initial categorisation of the land, 4 June 2020 Council endorsed the publicly exhibited scope of the draft Plan of Management shown below.



Scope of the draft Plan of Management for public exhibition (Stage 2 of Community Consultation) in 2020.

The area is comprised of:

- Jack Evans Boat Harbour Parklands which includes Chris Cunningham Park, boardwalk and McMahon's Beach, Anzac Memorial, Goorimahbah – Place of Stories and a section of John Follent Park east of the Seascapes building
- the northern and western sections of the Jack Evans Boat Harbour waterway
- Council managed sections of Ebenezer Park
- north of Coral Street adjacent to Ebenezer Park.

3 Previous Community Consultation

Stage 1: 'What's your Vision for Jack Evans Boat Harbour?' 2018

Prior to the development of the draft Plan of Management, community consultation was undertaken from 8 October to 30 November 2018. Stage 1 of community consultation endeavoured to obtain a meaningful snapshot of the opinion of the wider community.

The objective of the first round of community consultation was to provide an opportunity for the community to be involved and share what they believe is important about the area, the facilities, and how they would like to see the precinct managed in the future.

A detailed report outlining the key findings of this round of community consultation was placed on public exhibition with the draft Plan of Management. Nonetheless, following is a summary of the extensive community consultation undertaken in 2018.

Council sought the community's vision for Jack Evans Boat Harbour and opinion regarding:

1. The existing facilities, management and use of the Jack Evans Boat Harbour precinct including:
 - Usage patterns;
 - The level of satisfaction for the existing facilities;
 - Community concerns regarding the current facilities and management of the precinct;

2. The facilities, management and use of the Jack Evans Boat Harbour precinct into the future including:
 - The level of importance the community places on various facilities at the precinct;
 - Management priorities;
 - Community concerns or suggestions regarding potential facility upgrades, future uses and management of the precinct;

This information was sought via the following methods:

1. Vision Survey; – 'What's your Vision for Jack Evans Boat Harbour?'

Data set (A) – Randomised postal survey ('postal')

4000 hard copies of the uniquely numbered survey were posted to a randomised sample of dwellings from Tweed Heads, Tweed Heads South, Tweed Heads West, Banora Point and Final Head (see map below). The study area had a population in 2016 of approximately 38,800 people.

Data set (B) – Self-selected online and hard copy survey ('non-postal'):

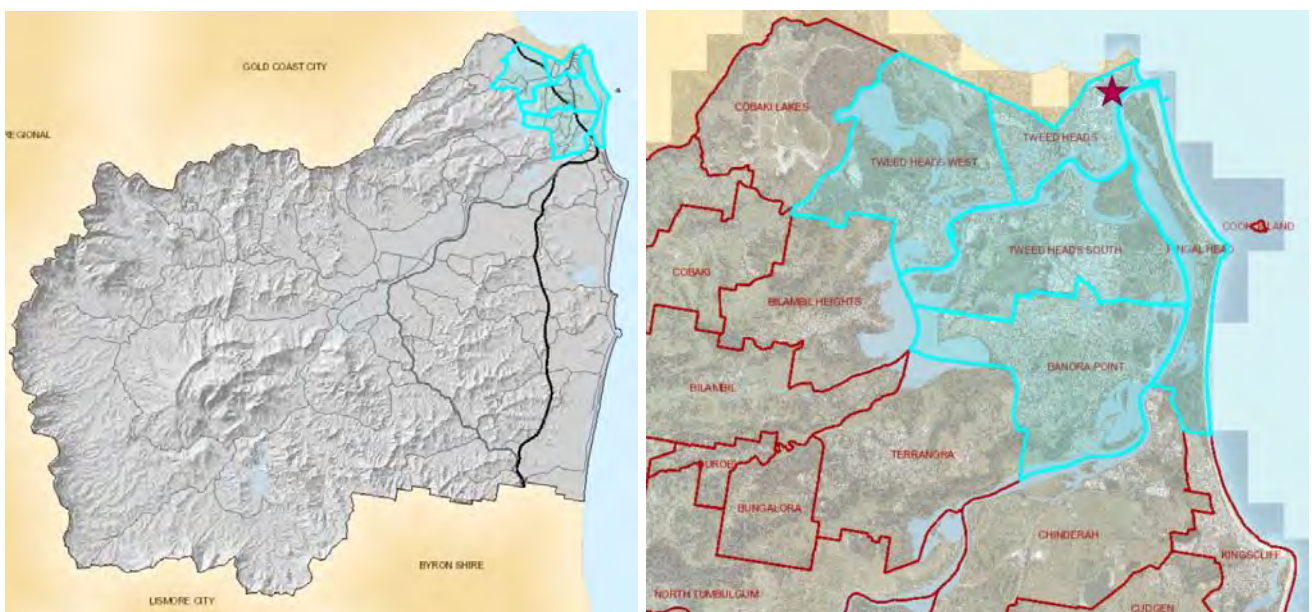
Open to the general public and included surveys completed by stakeholders or intercepted residents onsite. The survey was accessed via 'Your Say Tweed', Council's online engagement portal and were available in hard copy at community engagement events or at Council offices.

2. Tourist/visitor survey;
Comprised of '4 quick questions' offered at community events as an interceptor survey for non-residents.

3. Business survey;
Comprised of '4 quick questions' as an option for commonly 'time poor' business owners to have their say. The purpose of this survey was not to obtain a snapshot of the view point of the business community but instead to encourage submissions from the business community if they felt the Vision survey or general written submission was not appropriate or too time consuming. No Business survey responses were received as it is likely business owners provided feedback via the main survey.
4. Written submissions
Feedback was received through email, post, uploaded onto www.yoursaytweed.com.au/JEBH or via postcard submissions at any community engagement event

Awareness and promotion methods welcoming and encouraging survey completion and public comment included:

- Letters to stakeholders inviting comment or survey completion
- Manual letter drop to local businesses
- A Family Fun Day held on Saturday 27 October 2018. The event featured a free Lions Club BBQ, face painting and watersports with Big Trev;
- Two mid-week community engagement events (morning and afternoon sessions);
- Your Say Tweed webpage, Council's community engagement portal (yoursaytweed.com.au/JEBH);
- Two Tweed Link articles (9 and 23 October 2018), media releases and ongoing social media promotion to invite survey completion, encourage submissions and participation in the Family Fun Day;
- Hardcopies of the Vision survey were available at Council offices (Tweed Heads and Murwillumbah), Tweed Heads Visitor Information Centre (adjoining the precinct) and at community engagement events.



Maps of area where the randomised sample for the postal survey was sourced from. (Left – Tweed Shire; Right – Suburb boundaries. Red star denotes JEBH Precinct location.)

In 2018, community feedback received comprised of:

- 1028 completed 'What's your Vision for Jack Evans Boat Harbour?' surveys:
 - 378 from a randomised postal survey;
 - 650 from a non-postal, self-selected online and hard copy survey;
- 37 written submissions (including 23 from www.yoursaytweed.com.au/JEBH);
- 16 Tourist/ Visitor Surveys; and
- 11 postcard submissions.

Responses were captured and analysed in two ways comprising quantitative data (numerical data and statistics) and qualitative data (free form open ended comments and opinions). Council commissioned Jetty Research to analyse and report the quantitative findings from the 'What's your Vision for Jack Evans Boat Harbour?' surveys.

Major Quantitative Findings:

- The healthy sample size for each survey, and similarity of attitudinal results between postal and non-postal surveys, suggests that the findings provide a useful and meaningful snapshot of community opinion.
- Walking or running was the most frequently mentioned activity undertaken at the precinct (78% of all respondents).
- When asked to rate their satisfaction with 21 different facilities of the precinct, respondents were happiest with pedestrian access, open space for unstructured play/games, areas for special events (e.g. ANZAC Day, festivals or markets) and access for people of all abilities. They were least happy with commercial use opportunities, shelters, seating and BBQs, natural shade and playground equipment.
- In terms of importance for the same 21 facilities, it is noted that almost everything except commercial use opportunities is considered important.
- In terms of future priorities, environmental management (e.g. water quality, erosion, protection of marine habitat, protection of vegetation) was considered the most critical issue with 45% considering it a priority. This was followed by infrastructure maintenance or replacement (36%) and provision of additional facilities such as BBQs and picnic shelters (32%).
- Regarding the respondents' characteristics, the percentage number of responses from each age group were generally consistent with the percentages of the wider adult population with the exception of 65+ age group of the postal survey and the 18-24 year age group in both surveys, which were over and under represented respectively. Non-postal respondents were more frequent visitors to JEBH.

Major Qualitative Findings:

Qualitative comments were received from a range of avenues made available to the community which included open ended questions in the surveys, postcard submissions and written submissions received online or by mail or email. The open-ended responses were categorised into themes. The major qualitative findings included:

- The topics that were most frequently raised related to commercialisation and activation of the precinct, increase park facilities (e.g. toilets, BBQs, picnic tables, seating, lighting), social issues, that the precinct is already perfect and the need for shade.
- Regarding accessibility, it was apparent that members of the community are not aware of the existing wheelchair/all-abilities water access located on the northern beach. This potentially could be remedied by improved signage and public education.

- Regarding social issues at the park, very few statements acknowledged the issue as complex or were sympathetic to the homeless population. Many statements simply raised the matter as an issue to be addressed. It was commonly conveyed that the social issues could be resolved by improved regulation and Council/Police 'moving them on', CCTV, signage or improved lighting.
- The community was divided with regard to the topic of commercial use and activation of the precinct. Many statements objected to commercialisation of the precinct however conversely many statements provided support for commercial uses generally subject to conditions like for example, limiting commercial types (e.g. markets or food and drinks only), limiting scale (e.g. small events only) or impacts (e.g. only if the environment is preserved).

It was considered that the community have very strong yet divergent views with regard to the topic of commercial use of the precinct with inconsistencies within the quantitative and qualitative data. Given the language used within the statements, and that not all respondents were asked their view on the variables of this specific topic, further research incorporating specific questions on the topic would be required to determine a clearer and more rigorous assessment of community opinion.

It was unclear as to what the community meant by the term 'commercialisation' as it was not clearly defined within responses. Quantitative data conveyed support for the provision of 'areas for special events e.g. ANZAC day, festivals or markets' however when asked about critical issues, respondents indicated a lack of support for commercial activities. Further results from the qualitative data indicated that the topic is complex and requires further research incorporating specific questions to obtain a more thorough and detailed community opinion in this regard.

Notwithstanding, a balanced approach to a commercial use of the precinct was proposed in the compilation of the draft Plan of Management.

Tweed Shire Open Space Strategy Community Consultation. Stage 1 – 2016, Stage 2 - 2018

Extensive consultation with residents, stakeholders and open space users was undertaken as part of the development of the Tweed Shire Open Space Strategy 2019-2029 (TSOSS).

The engagement informed Council in determining the actions and priorities outlined within the TSOSS. Stage 1 of the TSOSS community engagement process identified the community's needs, preferences and aspirations for Shire's open space network and sport, recreation and park facilities. Stage 2 informed the adopted Open Space Strategy and Implementation Plan, which outlines the open space projects over the next 10 years.

The community engagement outcomes are presented as two documents: *Community Consultation Report Stage 1*, March 2016 and *Community Consultation Report Stage 2*, August 2019.

The community consultation for each stage comprised the following:

Stage 1

- 'Pop up' park – event featured at 10 community events across Tweed Shire.

- Online and hard copy surveys – Residents completed the following surveys: Open Space Survey, Youth Survey, Child Survey and Playground Survey.
- On-site surveys – Playground surveys were distributed on-site at Knox Park (Murwillumbah), Jack Evans Boat Harbour (Tweed Heads), Faulks Park (Kingscliff), and Norries Headland Park (Cabarita).
- Surveys to schools – Over 2,000 hard copies of the Open Space Survey were sent to schools across the shire.
- Roundtable discussion – Over 100 residents of Kingscliff participated in a community roundtable discussion on youth and family recreation opportunities in Kingscliff.
- Other promotions – Posters, postcards and hard copies of the surveys were available at Council’s Civic Centres, libraries and community centres.
- Written submissions.
- Councillor workshops – Two councillor workshops were held to inform councillors of the process of developing the strategy and to participate in the development.
- Internal working group.
- Tweed Link article.

Stage 2:

- In-person Community Conversations – Community Conversations were hosted between 22 October and 10 December 2018 in 15 locations across the Shire in addition to a Stakeholder Forum and 5 Youth Conversations. The Community Conversations sought to inform and engage the community on the draft strategy.
- Online prioritisation tool – The online prioritisation tool was designed to replicate the in-person Community Conversations.
- Online discussion forum (public) – The online discussion forum could be accessed via Your Say Tweed.
- Online submission form (private) – The community were able to comment on the draft strategy and the local action plans via Your Say Tweed.
- Quickpoll – A Quickpoll survey accessed via Your Say Tweed.
- Formal public exhibition period – The draft strategy was publicly exhibited for an extended period from 4 September to 16 December 2018.

Community responses	Number	Community responses	Number
Open Space Survey	456	15 Community Conversations	397
Playground Survey	158	Stakeholder Forum	29
Youth Survey	57	5 Youth Conversations	65
Child Survey	125	Online prioritisation tool	319
Comment postcards	88	Online discussion forum (public)	198
Written submissions	3	Online submission form (private)	37
Roundtable discussion	100	Quickpoll survey	90
Councillor workshop	2	Postal and email submissions	43
Internal working group meetings	4		

Summary of TSOSS community engagement activities & response numbers - Stage 1 (left); Stage 2 (right)

Appendix A provides an excerpt from *Community Consultation Report Stage 2, August 2018* which outlines the feedback provided following the Tweed Heads area Community Conversation.

The key messages received during this Tweed Heads consultation was generally consistent with the outcomes from Stage 1 of the community consultation for the JEBH Plan of Management.

4 Objectives

The purpose of this document is to report the key findings from the Stage 2 of the community consultation of the draft Jack Evans Boat Harbour Plan of Management which comprised of the public exhibition of the draft document.

5 Methodology

The draft Plan of Management was placed on public exhibition and the community was invited to provide feedback from 26 October till 8 December 2020 in accordance with the section 38 of the *Local Government Act 1993*.

A guide to the draft Jack Evans Boat Harbour Plan of Management was developed. The four-page guide:

- explained what a plan of management is;
- provided a summary of what is proposed in the draft Plan of Management; and
- outlined how the popular topics raised in the community consultation are addressed.

The documents that were placed on exhibition comprised:

- The Guide to the draft JEBH Plan of Management;
- The draft Jack Evans Boat Harbour Plan of Management;
- Appendix A – Commercial Recreation Activities on Public Open Space Policy;
- Appendix B – JEBH Parkland Use and Event Guidelines;
- Appendix C – Community Consultation Results Report;
- Appendix D – Tweed City Centre Local Environmental Plan 2012 Land Use Table;
- Appendix E – Condition Assessment Guidelines.

The public were able to view the documents on exhibition electronically via Council's Your Say Tweed page. Hard copies of the plan were available to view at the Murwillumbah Civic Centre and the Tweed Heads Civic Centre.

Written submissions received through the following avenues;

- Email to tsc@tweed.nsw.gov.au;
- Posted to Council (JEBH Plan of Management; General Manager; Tweed Shire Council PO Box 816; MURWILLUMBAH NSW 2484);
- Comments submitted on www.yoursaytweed.com.au/JEBH;

The comments tool on www.yoursaytweed.com.au/JEBH asked the following questions:

- *What do you like about the draft Jack Evans Boat Harbour Plan of Management?*
- *How can the draft Jack Evans Boat Harbour Plan of Management be improved?*
- *Do you have any other comments about the draft Jack Evans Boat Harbour Plan of Management?*

Statistics were not accumulated from the answers given the number of responses that did not answer the question and used the opportunity to convey their opinion.

Awareness and promotion methods welcoming public comment included:

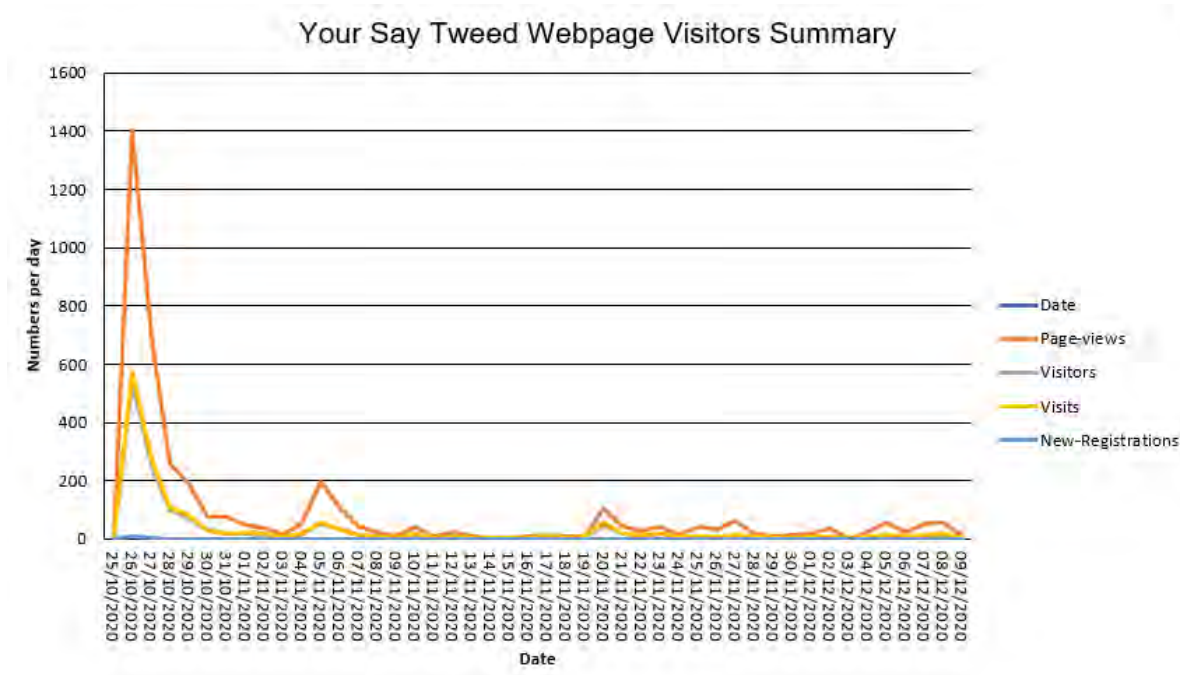
- A letter to stakeholders inviting comment (17 letters posted or emailed).
- An email to members of the public who made a submission or completed a survey during Stage 1 of the community consultation and wished to be notified (442 emails).
- Your Say Tweed webpage, Council's community engagement portal (www.yoursaytweed.com.au/JEBH). The page featured all documents for viewing electronically and an online submission tool.
- Council's website On Exhibition page <https://www.tweed.nsw.gov.au/OnExhibition> and notified all who subscribe to Council's 'What's on Exhibition' service.
- The Mayor, Councillor Chris Cherry was interviewed on ABC Gold Coast Radio on 27 October 2020 and on Radio 97 on 5 November 2020 discussing the draft Plan of Management on exhibition and welcoming public comment.
- Tweed Link article (4 November 2020), media release (26 October 2020) and ongoing social media promotion (from 28 October 2020).
- Hardcopies of the documents on exhibition were available to view at the Murwillumbah Civic Centre and the Tweed Heads Civic Centre.

It is noted that Tweed Shire Council was subject to NSW Public Health Orders during the public exhibition period due to the COVID-19 pandemic. This impacted the opportunity for in person community consultation avenues.

See **Appendix B** for a sample media release, Tweed Link article and social media post.

6 Community Response

The www.yoursaytweed.com.au/JEBH website featured the following visitation during the exhibition period.



The documents had the following number of downloads/views from the www.yoursaytweed.com.au/JEBH website

Document	Number of downloads
Endorsed Draft Jack Evans Boat Harbour Plan of Management June 2020	498
Guide to the draft JEBH Plan of Management	198
Appendix C - Community Consultation Results Report - JEBH PoM - Mar 2019	77
Appendix A - Commercial Recreation Activities on Public Open Space	56
Appendix B - JEBH Parkland Use and Event Guidelines	30
Appendix D - TCCLEP 2012 Land Use Table	20
Appendix E - Condition Assessment Guidelines	17

Community feedback comprised 40 submissions:

- 25 via Your Say Tweed; 15 via email.
- 4 from organisations; 36 from individuals.

The following table provides a summary of the themes and key messages from the submissions and also provides a response. Each submission and statement was collated into themes and summarised. The statements are grouped into the following themes:

- | | |
|---|--|
| • The document | • Goorimahbah and Aboriginal cultural heritage |
| • The facility today | • Environment |
| • Social issues | • Dogs, waterway uses and compliance |
| • Activation and embellishment support | • Miscellaneous |
| • Activation and embellishment objections | • Large scale proposals |

To summarise, the key messages received within the 40 submissions were as follows:

- Overall, people are happy with the proposed plan of management (10).
- Jack Evans Boat Harbour is a great facility (4).
- Concerns were raised over social issues including homelessness and anti-social behaviour within the park (12). Eight submissions stated that the homeless, alcohol or drug users and illegal campers need to be moved on. Five submissions conveyed that people feel too unsafe to use the park or toilet facilities. While three submissions acknowledged the matter is a complex issue that requires collaboration with all stakeholders.
- 12 submissions conveyed support for the activation of the precinct by way of for example, markets and special events (5) or a small kiosk or food vans (5).
- 11 submissions conveyed support for the proposed provision of additional facilities, in particular natural shade (6), the Goorimahbah inclusive playground expansion (6) and picnic facilities (4). Support was also conveyed for the storage shed for use by the hire craft operator subject to good design (3).
- Support was conveyed for retention of the area for passive recreation and peaceful enjoyment (7).
- Objections were received regarding additional permanent attractions (3), commercialising the area (3), an inflatable water park (2), a land based water park (1) and food vans or café (2).
- Support was conveyed for the Goorimahbah – Place of Stories and acknowledgement of the Aboriginal cultural heritage significance of the area (5).
- Both support and concerns were raised regarding dogs off-leash.
- Three submissions highlighted the need for safe swimming and suggestions were made for a net across the entrance or ocean pool set up.
- Compliance concerns were raised regarding boating in particular (3).
- Large scale proposals were suggested which included a marina precinct (1), convention centre (2) and a free water play park (4).
- Suggestions were made for improved boating access and facilities (5) which may involve dividing the harbour into a boating area and a non-motorised craft or swimming area (2).
- Support was conveyed for improvements to diving and snorkelling facilities (4) and improved fishing facilities (2).

Theme Submission comments summarised (number of similar statements) <i>Example submission quotes or paraphrased submissions.</i>	Response
The document	
<p>Overall, happy with the proposed plan of management (10)</p> <p><i>I am pleased there is a plan of management being constructed with clear guidelines for the use of this beautiful space. Please keep protecting Jack Evans harbour as it is a beautiful body of water full of amazing wildlife that can be seen by all with the naked eye, whilst swimming there!</i></p> <p><i>The JEBH PoM is condensed down to an easy to understand plan for the community with much more comprehensive information for those who choose to peruse. The historical photos are a great addition to the context of the locality... Council is to be commended, and a sincere thank you for this JEBH PoM that will guide its future, preserving this priceless scenic passive recreation public space accessible for all the community to enjoy.</i></p> <p><i>[After exploring the precinct] I came home and read the entire draft management plan. It is a forward thinking, well written and planned document that will continue to make the area the showpiece and pride of Tweed. Well done to council for having the foresight to look after such a gem.</i></p> <p><i>Overall this is excellent. Council is to be congratulated in incorporating so many of the ideals and aspirations of the community in the document. So let's get the planning over, the funding obtained and the doing going.... The Association is grateful however that the POM would seem to negate alienation of any parts of the land under council management by leasing same for residential development as past mooted ... Thank you for the opportunity to comment on what is an excellent framework for management.</i></p>	<p>Support for the draft plan of management noted.</p>
<p>The plan is not explicit enough (2)</p> <p><i>Be clearer about what the park can be used for (plan was somewhat vague).</i></p> <p><i>The actions listed are too general. The use of words such as "investigate", "feasibility" etc should be discouraged and replaced with real actions such as :</i></p> <ul style="list-style-type: none"> <i>• Replace the existing playground with a modern safe all purpose play ground</i> <i>• Plant X trees over the next 5 years</i> <i>• Install more BBQ's</i> 	<p>To avoid duplication, the plan refers to other legislation and policy which already provide detailed parameters for regulation in this regard which include Council's <i>Commercial Recreation Activities on Public Open Space Policy</i> and the <i>Local Government Act 1993</i>.</p> <p>The plan provides a detailed design brief for the Goorimahbah upgrade on pages 34-35.</p>

<ul style="list-style-type: none"> • <i>Build Y more shade structures</i> • <i>Apply for Z grants to support development etc.</i> <p><i>It is my understanding that Council already has a \$600 000 grant so it should be possible to include some specific actions.</i></p>	<p>The plan of management is an overarching planning document that will be in place for a minimum of 5 years and detail has been provided where possible. The plan deliberately does not include detail regarding numbers of shelters or trees as being too specific may prohibit future improvements, opportunities or innovations the details of which could not be predicted, that would otherwise be supported by the community and are in alignment with the community's values.</p> <p>Nonetheless, the design plan for Goorimahbah - Place of Stories proposed for exhibition in 2021 does include the level of detail sought.</p> <p>Further, there is no way for Council to predict the number and nature of grants that become available until they are advertised.</p>
<p>The plan should encompass planning for surrounding areas (1).</p> <p><i>While understanding there are limitations in resources, funding and scope of the project there are opportunities that fulfil some of the goals within the plan by acknowledging connections across the border. While historically the border has been treated as a hard edged line of separation and a no mans land, a proactive view would start considering the use of public space as a shared opportunity. Indeed in real terms the Central part of Tweed Heads and Coolangatta should philosophically be considered as one town, despite the physical constraints of the border, councils and governments.</i></p> <p><i>We have attached an overall plan which highlights some of the joint opportunities that could be considered in the long term master planning as a goal. While beyond the subject area planning for these could at least be part of the current review of JEBH. Importantly they could become the</i></p>	<p>Site context has been considered in the drafting of the plan of management and what can be addressed in ensuring connectivity to other nearby open spaces and other land uses.</p> <p>Planning is regulated under state legislation which therefore highlights the inherent difficulty in planning given each side of the border is subject to different legislation. Whilst it is acknowledged that joint planning between Gold Coast City Council and Tweed Shire Council is required to realise the potential of the Tweed Heads and</p>

<p><i>catalyst for positive and bipartisan discussion with the City of Gold Coast moving towards the one town ideal.</i></p> <p><i>Having lived and worked in Tweed Heads and Coolangatta for the past 30 years I am readily aware of the issues that the border creates. The JEBC is a wonderful asset and has the opportunity to be shared across the no mans land we call the border.</i></p>	<p>Coolangatta areas, the JEBH PoM is not considered the most appropriate avenue to undertake this task. The land subject to the plan is primarily Council administered Crown land, where the plan is empowered under the <i>Crown Land Management Act 2016</i>. The plan would not have legal authority over land of other tenures.</p> <p>The concerns raised are best addressed as part of the Tweed Heads City Centre masterplanning process coordinated by the NSW Department of Planning, Industry and Environment.</p>
<p>Typographical Error (1)</p> <p><i>... at point 4.3 p27 in the heading: 2019 should be 2029?</i></p>	<p>Noted and has been corrected in the plan.</p>
<p>Disagree with the Condition Ratings (1).</p> <p><i>I think the points awarded to the landscaping are a bit overrated, the whole area is fairly untidy.</i></p>	<p>The condition assessments and allocated rating were in accordance with Appendix E and consistent with assessments of Council assets shirewide. The rating doesn't consider how 'tidy' the landscaping is but instead the condition of the infrastructure.</p>
<p>Odd land tenure arrangements (1).</p> <p><i>It is unfortunate that State Government has not seen fit to include all of Ebenezer Park and Flagstaff Hill into the plan of management so the community will not have yet more hair brained schemes of museums, convention centres or residential/commercial here, on top of Flagstaff Hill and in the Coral Street quarry site (old bowls club)... It appears odd that the State Government has excluded a great swathe of land from the middle of these waterfront parklands which will be a source of ongoing concern and increase council's difficulties in good management.</i></p> <p>...</p>	<p>Noted. The scope of the plan is dictated by where Council has been appointed Crown land manager administered by the NSW Department of Planning, Industry and Environment – Crown Lands.</p>

<p><i>Whilst we understand the Crown retaining access to Wavebreak Beach (and hopefully cost of beachfront infrastructure), the retention of waterfront access to the south appears nonsensical, when council appears to be in charge of access to the northern training wall?</i></p>	
<p>The facility today</p>	
<p>Jack Evans Boat Harbour is a great facility (4)</p> <p><i>... To my surprise I found it absolutely fantastic. It was clean, well laid out, plenty of seating, easy to walk on the concrete and wooden areas. ... What a gem in the Tweed Heads area.</i></p> <p><i>Thanks It is wonderful place!</i></p> <p><i>The whole of the Jack Evans Harbour and foreshores are a credit to the past planners and designers and council workers past and present. The entire area is used by many families and groups who would be pleased with the effort and work to ensure they are safe while in the area.</i></p>	<p>Support of the existing facility is noted.</p>
<p>Objection to current gardening operations (2)</p> <p><i>... those hired to mow the grassed areas who are nothing short of hoons speeding around close to walkers, showering parked cars with dirt & grass clippings & running over towels & belongings left by bathers. Not a good impression for travellers & visitors!!</i></p> <p><i>I wish that TSC would override the stupid Parks Management policy that every tree be fashioned as a lollipop. Currently, trees in parks have lower limbs removed. While there may be merit for this in some locations where the tree is located with a defined lawn area, making it a universal policy fails to provide the aesthetic benefit of an untrimmed tree in a non-lawned area. The Plan of Management needs to allocate areas of non-lawn and in those areas, trees be allowed to develop without branch pruning.</i></p>	<p>Comments regarding gardening operations is noted.</p> <p>Not directly related to the plan of management as the document does not detail garden maintenance specifications.</p>

Social issues	
<p>Raised social issues including homelessness and anti-social behaviour within the park (12).</p> <p>Regarding social issues, submissions state:</p> <ul style="list-style-type: none"> • The homeless, alcohol or drug users and illegal campers need to be moved on (8). • People feel too unsafe to use the park or toilet facilities (5). • The homeless leave the place 'filthy' (3). • Lighting, CCTV or police patrols are the solution (2). • The matter is a complex issue that requires collaboration with all stakeholders (3). <p><i>The Plan is to enhance the atmosphere and look of the area. This is impossible with the constant presence of homeless people camping, sleeping, making excessive noise, begging, using bad language in and around the area. Just like the sand in the river is dredged regularly to ensure safe passage, the itinerant groups should be moved to a place where they are not a problem.</i></p> <p><i>Get rid of the drug addicts and homeless that congregate around the toilets.</i></p> <p><i>Address the homeless and drug problem. Enforce a No Camping rule with patrols and fines to move all the people on who live in their cars and in the bushes in the area... This is a big deterrent from people using the area. It seems a shame to spend so much on improving the area without addressing this major issue that everyone seems aware. ... You need to patrol the area and making it difficult for people to camp illegally. Fine them and move them on.</i></p> <p><i>...usually occupied by illegal campers or homeless & left in filthy unusable condition.</i></p> <p><i>I do think Council needs to have a strict homeless policy in place... If Council were more vigilant on a daily basis in moving them on, camps would not be allowed to become established.</i></p> <p><i>...then others will stay away/not be comfortable being there or even walking through.</i></p> <p><i>The toilet facilities next to the northern car park 'have become a haven for homeless and often drug impaired members of the community' where 'no level of sanitary servicing will respond to the current use profile' and results in 'members of the public feel safe to use the toilets'. The location of the toilets are inconvenient and 'would be better placed on the Boundary Street frontage closer to the on-street parking and family friendly facilities'. Given the frequency the club is required to manage issues round the club's property, the submission states <i>the management plan needs to address public safety, lighting strategies and CCTV coupled with increased high visibility patrols in the location.</i></i></p>	<p>Addressing the social issues within the precinct is to be undertaken in accordance with Council's <i>Homelessness Strategy</i> rather than under the Plan of Management. This is due to its complex nature, the issue not being restricted to the confines of the nominated precinct and ensuring consistency in Council's approach.</p> <p>As per Council's policy, homeless people have the right to access and use Council spaces and facilities just like anyone else. However, illegal and anti-social behaviour will be reported to police. The proposed activation of the park can assist to minimise the frequency and negative consequences of anti-social behaviour.</p>

<p>Objection to alcohol prohibition (1).</p> <p><i>The no alcohol ruling is utterly ridiculous. Where a normal law abiding family and friends can't have a picknick lunch with a couple of wines or beers when there are all sorts of undesirables wandering around at all times of the day drinking and abusing anyone who crosses their path.</i></p>	<p>Alcohol consumption regulation is not within the scope of the draft plan of management. The prohibition of alcohol consumption within the parklands is in place by way of signage in accordance with the <i>Local Government Act 1993</i> in response to the social issues in the area.</p>
<p>Activation and embellishments support</p>	
<p>Support for the activation of the precinct (12) and in particular has suggested or provides support for:</p> <ul style="list-style-type: none"> • small kiosk or food vans (5) • general improvements to support more people (2) • markets and special events (5) • night events (2) • a self-guided interpretive trail for tourists (1) <p><i>Whilst I don't like the idea of over commercialising the area, I think if there was more establishments, even small food truck or container style coffee shops and food this would make the area a bit busier, be good for the community and hopefully with more people it would make this area a little less scary... We need to increase the people using it, make it busier so that these mugs preying on people move on.</i></p> <p><i>Past pop up eateries with varied foodstuffs were very popular, so should be returned during holidays & special events. Why not a Seafood Extravaganza now & then with fresh local fishermens catches prepared for meals for sale by locally renowned chefs in takeaway plate format. Also have local musicians presented in one hour stints for entertainment. A small pop up stall is needed to provide coffees ,drinks,ices, fruit & snacks...</i></p> <p><i>We would like Goorimahbah to remain as uncluttered as possible, and room must be left for circus sized tents, rodeo rings, etc. and rock concerts.</i></p> <p>Utilising the Goorimahbah precinct for the use of larger scale business events, for which the space can be utilised for outdoor overflow and or larger scale dining occasions that would give the Tweed's business events profile a boost.</p> <p><i>Currently the boat harbour is greatly under utilised</i></p>	<p>Support for the overall activation of the precinct is noted. This is consistent with an objective of the plan of management which is to <i>support the healthy activation of the Precinct for the enjoyment and well-being of the community and visitors to the Tweed by encouraging a variety of recreational uses.</i></p>

<p><i>Add some sort of small commercial premises so a cafe/restaurant can operate there. This will attract the right sort of people and also provide some income for council to maintain the area.</i></p> <p><i>Maybe a cafe with shaded outdoor seating facing east. Night markets and bands would make the area much more fun and create a fun and vibrant atmosphere.</i></p> <p><i>Over the summer months it would be great to have a pop up cafe and ice cream kiosk in another location other than the vicinity of the toilet block.</i></p> <p><i>I like that you are thinking of spending money there to make it better but I think that more could be done than what is planned to actually be of some use to the community and bring people into the harbour.</i></p> <p>A submission nominates Goorimahbah – Place of Stories as an ideal starting point for self-guided interpretive trail for tourists that tells stories about the whole shire. Consistent signage and markers along with the use of technology is suggested to extend shirewide.</p>	
<p>Regarding the Visitor Information Centre (VIC), the following requests were made:</p> <ul style="list-style-type: none"> • Landscaping in the park includes the grounds around the VIC with the ethos to utilise the Centre as the hub for visitors, whilst then drawing those visitors down to enjoy the amenities of the park. • Signage within the park to raise awareness of the VIC’s proximity, as well as effective directional signage. 	<p>Noted. Landscaping is permissible under the draft plan. The plan proposes a signage review regarding accessible facilities within the Precinct to improve way finding.</p>
<p>Support for the provision of additional facilities and improvements (11) and in particular has suggested or provides support for:</p> <ul style="list-style-type: none"> • BBQs and seats (4) • Bins (2) • Showers (1) • Bubblers (2) • Natural shade (6) • Pathway access (1) • Exercise area (1) • Goorimahbah playground expansion (6) • Non-unisex toilets (2) • Chess table and table tennis (1) • Story telling signage (1) • Landscaping ideas (2) 	<p>Support for the proposed general parkland embellishment and improvements is noted.</p> <p>This is consistent with an action within the plan of management which is <i>to provide park infrastructure that reflects a regional level open space in accordance with Council’s adopted Open Space Strategy. Upgrade picnic facilities to accommodate more people, increase natural shade and review and install park infrastructure</i></p>

<p><i>Planting of real trees please.</i></p> <p><i>More wide canopied shade trees which we so badly need in this hot sub-tropical climate - poincianas and jacaranders would look stunning! And seats underneath IN THE SHADE!</i></p> <p><i>More tree planting – including <u>proper</u> trees like banksias, eucalypts and casuarinas is required. Replacement big shade tree plantings are required ... Shade planting is also required at Ebenezer Park.</i></p> <p><i>My thinking would be, yes some bbq areas serviced by bins monitored and cleaned, with shaded areas. Walking connecting paths, eg getting kayaks eyc from carpark to water, more seating areas, some shaded. Excercise spaces a very good idea.</i></p> <p><i>The amount of rubbish I find while fishing is absolutely horrendous, ... I really like the draft plan, but if we could add more bins, signage, and awareness that would be great.</i></p> <p><i>Ebenezer Park is just a wasteland , with minimal useage away from the riverside path. Whilst originally designed undulating to provide a raised staging area it is very rarely used for performance. As it provides water views, sea breezes it requires shade plantings and passive recreation . As the Goorimbah plan provides for keeping open space for tents etc. it would appear that the Ebenezer Park could be developed into a complementary picnic area . It does provide beach access to Wavebreak and Duranbah, and is popular.</i></p> <p><i>It would be nice to have some local rock or sandstone features or garden borders.</i></p> <p><i>Landscape the area north of Coral St with native plants. It is full of non native plants and humans.</i></p> <p><i>Play equipment and b-b-q areas are inadequate for the size of the parklands</i></p> <p><i>The shower requires duplication in the area of the commencement of the boardwalk. Noted that the bubbler previously in this area has been removed, so piping should be in situ for ease of replacement/installation.</i></p> <p><i>I would like to suggest that in your Plans for Improving the Area in question that you consider the following suggestions:</i> <i>(1) Installations of outdoor Tables to incorporate Chess Playing Boards to enable People to bring their own Chess Pieces.</i></p>	<p><i>required for events including power and temporary vehicular access.</i></p> <p>Further, another consistent action within the plan of management is to: <i>Investigate feasibility and opportunities for:</i></p> <ul style="list-style-type: none"> • <i>Exercise equipment;</i> • <i>Youth precinct featuring for example volleyball nets, table tennis or basketball half court;</i> • <i>Inclusion of small scale water play within the playground upgrade within Goorimahbah;</i> • <i>Stage for live music.</i>
--	--

(2) Outdoor Table Tennis Tables to be installed. Chess is a Beautiful Game , many Centuries old, providing many benefits. In my International travels I have seen many Cities where chess is played providing pleasure to players and onlookers alike. Table Tennis is also a beautiful game, also installed in many overseas Public Parks providing great enjoyment for families, holiday makers and tourists. This Tweed Heads area has many retired people and tourists and these games would be a very welcome attractions to lots of people. Footnote :- When I first arrived in the Tweed Area two years ago, we enjoyed the great benefits of a local Chess Club. It expired a while ago for several reasons and it is a Great Shame that the Tweed Area now has no Chess Club.

I agree with the plans Council has for the park. To keep the park free from commercial development is essential. The expansion of the playground with increased shade and shelter and more picnic and recreation facilities is ideal.

The story of Jack Evans and the porpoise pool is one item ... has not seen mention of in the plan of management documentation. Although having dolphins in confined spaces is by no means a practice to be glorified by modern standards; it is a captivating history and has merit in being utilised for storytelling in the park. This could take the form of interpretive signage including some historical photography and content on the story of the specific area.

Activation and embellishment objections

<p>Support for retention for passive recreation, peaceful enjoyment and 'left alone' (7)</p> <p><i>I very much like that the plan is to keep it natural and NOT build more or make more commercial.</i></p> <p><i>As for the parkland, please leave it alone other than planting some more shade producing trees around and above the seating...</i></p> <p><i>...We don't want a Gold Coast here, we are the Tweed, beautiful, natural, wonderful, peaceful, relaxing etc...</i></p> <p><i>... Leave it in the beautiful state it is in...</i></p>	<p>The draft plan endeavours to balance the protection of the environmental values with healthy recreational activation to provide greater social benefits. The plan states that all proposed uses must be of <i>an appropriate level of use that does not negatively impact on the peaceful enjoyment of the area or the natural visual amenity;</i></p>
<p>Objections to:</p> <ul style="list-style-type: none"> • additional permanent attractions (3) • inflatable water park (2) • land based water park (1) • youth facility and music stage (1) • commercialising the area (3) <p><i>What people don't want is permanent noise making features such as inflatable childrens entertainment play areas with screaming uncontrolled kids on the water with risk of drowning, pollution etc.</i></p> <p><i>Not long ago, TSC had an application for a commercial permanent water park. I believe that the Plan of Management should not only totally rule out any part (water or land) be utilised by commercial operators for any activity save for a temporary activity associated with a short term (ie. up to 7 days) community oriented event or activity, but the Plan should articulate that it is a NON ALLOWABLE activity.</i></p> <p>Support the plan and proposed level of activation.</p> <p><i>...We note one of the top community priorities was to protect the parkland and avoid commercialising the area. The intent of this priority clearly expresses the wishes of the Tweed Community should a conflict with the Crown Lands Act occur.</i></p>	<p>The primary actions proposed for development involve:</p> <ul style="list-style-type: none"> • Provide park infrastructure that reflects a regional level open space which includes upgrading picnic facilities to accommodate more people, increase natural shade and review and install park infrastructure required for events including power and temporary vehicular access. • Upgrade Goorimahabah – Place of Stories as an inclusive and accessible park and playground that integrates Aboriginal elements and stories. <p>No large permanent attractions are proposed.</p> <p>The plan of management allows for further investigation of feasibility and opportunities for the following:</p> <ul style="list-style-type: none"> • Exercise equipment; • Youth precinct featuring for example volleyball nets, table tennis or basketball half court; • Inclusion of small scale water play within the playground upgrade within Goorimahbah; • Stage for live music.

I never want to see this public space be handed over wholly or by lease to any commercial entity including clubs. In my view it should always be a public green space. Temporary use for markets is acceptable in my opinion, but never permanent commercial use

Not in support of stage for music events, there are many many venues for music, we have been using Jack Evans area for years, kayaking, sitting, walking/bike riding, a music concert venue will take away the beautiful peacefullness about it... Putting a volleyball, basketball court is ridiculous. The tweed has many many areas dedicated to this already. This will create a lot of annoying noise for those wanting a relaxing day with family or partner etc. No one wants to listen to balls bang the ground continually, it will also attract groups of unsupervised young people like a drop in centre...

- an artificial reef in conjunction with facilities and water access that supports scuba diving and snorkelling.
- Appropriately designed storage building for the non-motorised watersports hire business to operate from;
- Construction of a kiosk/café which formed part of Stage 2 of the 2009 redevelopment or commercial kitchen building for hire or seasonal lease.

These items were generally supported during Stage 1 of the community consultation. Most concerns the community raised about these items were commonly details in the design, details of the proposal or scale of the proposal hence further investigation is required.

Investigations involve undertaking further community consultation on the specific project matter prior to works with options and details on the size. The number of the objections received on these matters during Stage 2 of the consultation have been weighed against support received during Stage 2 in addition to the results of the extensive community consultation undertaken during Stage 1 and it is concluded that further investigation of these proposals provides a fair and considered way forward.

Commercialisation of the area has been consistently raised as a concern during Stages 1 and 2 of the community consultation however the definition of which is unclear given for example, markets which are a commercial use, contrarily receive consistent support. The plan of management does not involve the selling of land for commercial interests. The plan of management focuses on the area being retained as public open space which is utilised for social and cultural activities and the provision of infrastructure that supports this. This includes events and markets. Other commercial uses must be consistent with the reserve purpose and are considered to be adequately regulated by Council's *Commercial Recreation Activities on Public Open Space Policy*.

<p>Objection to food vans or café (2)</p> <p><i>Having food vans etc or pop up shops another bad idea, lets support existing businesses. Not take their business.</i></p> <p>Regarding the proposed kiosk/café, the submission from Tweed Towns Services Club states the cafe <i>'will further detrimentally impact on the amenity of the Harbour'</i> and <i>'the café location will impact on the views from the Club's balcony which is specifically designed to showcase the Harbour and parklands... The Club has submitted a recent development application to enable more people to enjoy the balcony and alfresco dining overlooking the harbour through a 140 square metre addition to this facility. The location of the kiosk as proposed will diminish this investment'</i> and <i>'exacerbate the issues surrounding the toilet facility... and will encourage even more anti-social behaviours'</i>. Further the Club has concerns regarding glare from the proposed roof. The Club also seeks clarity on the final location of the proposed kiosk.</p>	<p>The plan proposes <i>investigate feasibility and opportunities for the kiosk/café or a commercial kitchen</i>. Further community consultation will occur on the proposed location and design prior to any construction in this regard and any works are to be prioritised in alignment with the priorities from the TSOSS.</p> <p>Stage 1 of the community consultation provided some support for a kiosk/small café. Concerns the community raised about these items were commonly regarding details in the design and or scale of the proposal hence further investigation is required.</p> <p>Investigations involve undertaking further community consultation. The number of the objections received on this matter during Stage 2 of the consultation have been weighed against support received during Stage 2 in addition to the results of the extensive community consultation undertaken during Stage 1 and it is concluded that further investigation of this proposal provides a fair and considered way forward.</p> <p>It is not in the public interest that private development on private land burdens or sterilises public land. Nonetheless, the location and design of any kiosk should it go ahead, will consider future stakeholder and community consultation.</p>
<p>Objection to natural shade in Memorial Park.</p> <p><i>There are many older residents in unit blocks opposite the ANZAC Memorial park (along the wharf street side) who sit on their balconies to watch activities such as ANZAC day ceremonies, New Year's Eve fireworks displays etc. (as they are not necessarily physically able to attend in person). I note there is mention of increasing the numbers of trees in the entire precinct for additional shade. Whilst I understand the need in the large area adjacent to boundary street, could council please be mindful that increasing tree numbers in the ANZAC memorial park, would obstruct the views of the memorial and other celebrations for those in unit blocks opposite. This is a genuine concern and hope that council does not increase tree numbers in that small space.</i></p>	<p>The request is noted. No specific tree locations have been nominated within the plan of management.</p>

Goorimahbah and Aboriginal cultural heritage	
<p>Support for Goorimahbah – Place of Stories and acknowledgement of the Aboriginal cultural heritage significance of the locality (5).</p> <p><i>Likes the recognition of the indigenous place of stories</i></p> <p><i>...It's about time for more name recognition Our local Tweed Indigenous could do a ceremony and cut the ribbon on the opening celebration Thank you</i></p>	<p>Support noted.</p>
<p>Indigenous significance not acknowledged (1).</p> <p><i>Not very much [positive] at all [about the plan]. There is nothing to indicate story hill, that is has First People significance.</i></p>	<p>The plan of management nominates Goorimahbah – Place of Stories as a primary feature of the northern section of the parklands which is an indigenous place making project. Goorimahbah is planned as a community cultural site featuring an inclusive park and playspace.</p>
Environment	
<p>Support for the protection of the environment (2).</p> <p><i>The rainforest north of Coral Street is an extraordinary example of how beautiful and lush were the coastal bushlands in the Tweed. This is probably the only piece remaining that can be easily seen by the general public. This is a real jewel in the crown of the JEBH Plan of Management and provides a safe haven for lots of critters. To be kept safe please.</i></p>	<p>The plan of management supports the protection of the environmental values of the area as a primary objective.</p>
<p>Raised concerns regarding erosion (1).</p> <p>Recently dumped sand replenishment along McMahon's beach steep shoreline is already being eroded by beach users.</p>	<p>Noted. Erosion management and resilience is a performance target of the draft plan. It is noted that some areas of the waterway are not under Council's management and not subject to the draft plan of management however relevant to a future Coastal Management Program.</p>
<p>Raised concerns about silting (1).</p> <p><i>As a disabled kayaker I spend a lot of time in the Harbour/River area & feel that the Harbour is silting up. Its probably not the Council's responsibility but dredging of the middle section of the Harbour would help. Obviously this would exclude the shallow shore areas where children swim & the seagrass beds.</i></p>	<p>Noted. Sand movement management and waterway resilience is a performance target of the draft plan. It is noted that some areas of the waterway are not under Council's management and not subject to the draft plan of management however relevant to a future Coastal Management Program.</p>

<p>Reinstate back channel (1).</p> <p><i>The waterway should be restored back to the way it was pre-1956 before the environmental vandalism of land reclamation took place.</i></p>	<p>This is not feasible given the existing land tenure and development to the south.</p>
<p>Dogs, waterway uses and compliance</p>	
<p>In support of dogs off leash (1):</p> <p>Add an off leash dog beach; consider Durambah Beach as dog off leash.</p>	<p>Consideration of the use of the space by dogs is to be regulated by signage and not by controls within the draft plan of management. As the provision of dog friendly facilities requires a broader, strategic approach across the whole shire, this is considered the most appropriate method in addressing the matter.</p>
<p>Raised concern about dogs off leash (1):</p> <p><i>We no longer use the area for a number of reasons ... the number of known savage breeds of unleashed dogs showing threatening attitudes to children & people in the water causing them to leave the area...</i></p>	<p>Consideration of the use of the space by dogs is to be regulated by signage and not by controls within the draft plan of management. At present dogs off leash are not permitted.</p>
<p>Greater compliance and regulation (2):</p> <p><i>More police patrols, bikes and scooters on the boardwalk can lead to an accident without regulation.</i></p>	<p>Council has no authority to increase police presence. This is outside the scope of the draft plan of management.</p>
<p>Suggests signage to address compliance issues regarding:</p> <ul style="list-style-type: none"> • Unauthorised mooring and jet skies (2) • Marine wildlife protection eg properly disposing of fishing lines, slower boats. (2) 	<p>Most of the waterway section of JEBH is regulated by the NSW Roads and Maritime Services, not within Council's jurisdiction and therefore not within the draft plan of management scope. Nonetheless, Council has written to the department requesting signage and a greater compliance presence in this regard.</p>
<p>Requests for greater policing related to boating within the waterway (3).</p> <p><i>There were three giant catamarans have been there for at least the last four nights and every Christmas holidays we have boaties mooring for days at a time. These issues also need to be policed as currently there are 4 boats that have been in the Harbour for nearly a week and jet skis race in regularly.</i></p>	<p>Most of the waterway section of JEBH is regulated by the NSW Roads and Maritime Services and is not within Council's jurisdiction.</p>

Suggests improved boating access and facilities (5). These submissions also suggested:

- The harbour area can be divided into a boating area and a non-motorised craft or swimming area (2).
- a commercial marina precinct (1).

The Management Plan needs to provide for motorised boating access to the boat harbour including provision of maintaining a safe navigable channel (resulting in better flushing with tidal movement) in and out of the boat harbour, short term parking, walking access to Tweed Shops. The word 'boating' appears only 3 times in the whole of the Management Plan even though this 'place' is called a 'Boat Harbour'...it is the only possible place on the Tweed where it is practical to have boating access close, ie: with walking distance, to the centre of Tweed... The Boat harbour Management Plan is a plan for a 'Boat Harbour' without boats... This is shameful! ... The Boat Harbour is more than large enough and is geographically capable of being safely and practically divided into motorised boating and non-motorised boating/other water activities, thus catering for all of the Tweed Community...

Add a boat ramp there, increase the amount of car parking and also put a boat docking jetty so boats can get to land and access the area also.

As the name implies it is a boat harbour however there doesn't seem to be anything in the draft about boats. Sail or motorised... I would like to see a wider entrance into the Boat Harbour as the existing ones is hard to enter when the tide is running fast... I like to anchor up and get lunch or a coffee and sail home.

I would recommend that powered boats could access the JEBH but that a designated area be provided to protect swimmers and bathers from potential incidents with power boats. The no-go area should include no beaching of boats with them being required to anchor offshore (say 50m) from the low water mark.

Build a small commercial marina with small restaurants and gift shops. I will attract a lot of locals and tourist. The plan now is what it is now boring, nothing to do for older people and the Tweed is getting more and more older people. The small commercial area maybe on the left hand side, so the parking can be done Keith Compton Dr. There will be enough space for park. Also important it will give council additional income.

Given the scope of the plan of management is limited to the areas under Council management, the waterway area of the JEBH is mostly excluded as shown below. Green areas denote the land subject to the plan of management.



Although noted in the draft plan, the boating and jet ski restrictions to the waterway is imposed by the NSW Maritime guidelines and not through the plan of management.

Regarding the provision of a boat ramp Stage 1 of community consultation which received 1092 submissions, was considered to achieve a 'healthy sample size' and 'provide a useful and meaningful snapshot of community opinion'. The results of this detailed engagement concluded that:

Support was conveyed for the primary use for the waterway area to be swimming, snorkelling and non-motorised watersports like kayaking or stand-up paddleboarding and the value of the harbour as a safe swimming location was expressed. Mixed views were held with regard to boating in the harbour however

	<p><i>suggestions were made for the construction of a jetty or pontoon to the north for both boat and swimmer use;</i></p> <p>Therefore the plan is recommended to continue to state that the <i>future use of the waterway should be encouraged as a mixed use recreation area primarily for swimming and non-motorised watersports with boating permitted as a secondary use.</i></p> <p>Construction of additional boating facilities is not considered to be a priority and therefore not recommended.</p>
<p>Requests a net for safe swimming (3)</p> <p><i>I have spoken to many about placing a net and walk way across the mouth of the boat harbour to make it into a safe seawater swimming area.</i></p> <p><i>I feel like a sea pool, netted and with swim lanes would bring people to the harbour, especially at a time where there is increased shark activity, it's the perfect place for swimmers who want to swim laps in the sea to do so safely and to utilise such a beautiful area for health and fitness.</i></p>	<p>It is noted that the location of the harbour entrance and most of the waterway is outside the scope of the plan of management. Nonetheless, the plan of management states <i>the future use of the waterway should be encouraged as a mixed use recreation area primarily for swimming and non-motorised watersports.</i></p> <p>Netting for safe swimming is not prohibited by the plan however should be subject to further community consultation prior to implementation given the Stage 1 of the community consultation concluded that regarding <i>future priorities, environmental management (e.g. water quality, erosion, protection of marine habitat, protection of vegetation) was considered the most critical issue with 45% considering it a priority.</i> A net may not be considered consistent with this priority.</p>
<p>Request for improved water access (1)</p> <p><i>A wooden ramp or stairway access to the water is required at McMahon's Beach and east of Seascape.</i></p>	<p>It is noted that the location of part of the water access request is outside the scope of the plan of management. However any proposed water access works in this location is within the scope of a future Coastal Management Program.</p>

<p>Support for improvements to diving and snorkelling facilities (4)</p> <p><i>The informal river access has a high volume of both commercial and local use by divers and snorkellers; has received only minimal upgrade in the past thirty years, which is a bit of a disgrace.</i></p> <p><i>We need safe exit and entry points into the Tweed River from near the jetty at Jack Evans boat harbour. It is dangerous and many divers use it everyday as well as swimmers. We need something similar to what is in Southport.</i></p> <p><i>I like that most things are kept the same, and upgrades to certain facilities. Particularly to Ebenezer Park, and facilities for snorkelling and scuba diving ...</i></p>	<p>It is noted that the location of the water access is outside the scope of the plan of management. However, the plan of management states it is to be consistent with and support the implementation of the actions within an adopted Coastal Management Program (CMP). Any proposed water access works in this location is within the scope of a future Coastal Management Program.</p> <p>Nonetheless, the plan of management does state the following relevant actions and improvements:</p> <ul style="list-style-type: none"> • <i>small scale facilities and water access that supports scuba diving and snorkelling.</i> • <i>Improve public access to the river and foreshore for both land and water based activities.</i> • <i>Investigate feasibility and opportunities for an artificial reef.</i>
<p>Suggests improved fishing facilities (2)</p> <p><i>Council could investigate a few places for people to fish safely from banks or platforms with cleaning stations with refuse bins nearby to prevent associated rubbish from washing off beaches into the harbour.</i></p> <p><i>The entrance wall urgently requires repairs or replacement. Divers have taken over the area preventing recreational fishing from the unkept jetty, this jetty needs to be updated and improved with CCTV etc.</i></p>	<p>Most areas ideal for recreational fishing and the northern and eastern revetment walls are under State management and outside the scope of the plan of management.</p> <p>The provision of cleaning stations was not raised as a priority within Stage 1 of the community consultation. Given the potential amenity impacts and the presence of similar facilities elsewhere in the Tweed, installation of cleaning stations have not been prioritised within the plan of management.</p>
<p>Support for storage shed for use by the hire craft operator subject to good design. (3)</p> <p><i>Storage sheds for water rec hire, need to be careful here, that it is environmentally friendly and only one.</i></p> <p><i>Any storage area for the kayaks, sups, to be unobtrusive and fireproof.</i></p>	<p>The plan of management states: Investigate the <i>feasibility and opportunities for an appropriately designed storage building for the non-motorised watersports hire business to operate from.</i></p> <p>Support for this action is noted.</p>

<p>Concerns related to watercraft hire service provider (2):</p> <p><i>There is no ability for any other person wanting to rent to the public stand up paddle boards etc due to the current incumbent. This person needs to be told his language needs to change drastically for the better.</i></p> <p>The boat and craft hire service provider must not <i>clean their craft in the water and cause pollution</i>. They also need to <i>ensure the craft metal hooked anchors on the harbour seabed are marked by a buoy as a warning so as not to cause wounds to bathers</i>. The service provider also needs to <i>be attendance on a regular basis to provide a decent service to both locals and our valued visitors</i>.</p>	<p>The commercial use of public open space needs to be in accordance with the <i>Crown Land Management Act 2016</i> and the <i>Local Government Act 1993</i> (LG Act). The current service provider has been awarded the current tender contract in accordance with the LG Act and related Council Policy. Any other provider can participate in future tender processes.</p>
<p>Environment</p>	
<p>Supports the protection of the environment (2).</p> <p><i>The rainforest north of Coral Street is an extraordinary example of how beautiful and lush were the coastal bushlands in the Tweed. This is probably the only piece remaining that can be easily seen by the general public. This is a real jewel in the crown of the JEBH Plan of Management and provides a safe haven for lots of critters. to be kept safe please.</i></p>	<p>The plan of management supports the protection of the environmental values of the area.</p>
<p>Raised concerns regarding erosion (1).</p> <p>Recently dumped sand replenishment along McMahon's beach steep shoreline is already being eroded by beach users.</p>	<p>Noted. Erosion management is a performance target of the draft plan. It is noted that some areas of the waterway are not under Council's management and not subject to the draft plan of management. However, it is relevant to a future Coastal Management Program.</p>
<p>Raised concerns about silting (1).</p> <p><i>As a disabled kayaker I spend a lot of time in the Harbour/River area & feel that the Harbour is silting up. Its probably not the Council's responsibility but dredging of the middle section of the Harbour would help. Obviously this would exclude the shallow shore areas where children swim & the seagrass beds.</i></p>	<p>Noted. It is noted that some areas of the waterway are not under Council's management and not subject to the draft plan of management. However silting is relevant to a future Coastal Management Program. Water quality is noted as a performance target of the draft plan.</p>
<p>Reinstate back channel (1).</p> <p><i>The waterway should be restored back to the way it was pre-1956 before the environmental vandalism of land reclamation took place.</i></p>	<p>This is not feasible given the existing land tenure and development to the south.</p>

Miscellaneous	
<p>Upgrade the fish and chip shop (1)</p> <p><i>The fish & chip shop looks tired and well past a make over... More should be done to clean up the building and the immediate area around there. On the roof of the shop are many flower pots with plants that live & die based on the weather. There is also a car canopy stored on roof, all adding to an unloved and uncaring look.</i></p>	<p>The building is privately owned, not on Crown land and outside the scope of the draft plan of management.</p>
<p>More natural shade along Seascape frontage (1).</p> <p>Regarding the Seascape frontage to boatharbour, two stands of palm trees giving shade have been removed by the body corporate and replaced with shrubs, no doubt to discourage the general public from lengthy stay in the area, hence the need for more shade trees elsewhere. Co-operation or coercion is required with the Seascape Body Corporate to either plant and maintain the eastern garden outside their walls, in addition to plant and maintain the boatharbour frontage.</p>	<p>The Seascape frontage is privately owned and therefore outside the scope of the draft plan.</p>
<p>Suggests putt putt mini golf facilities (1).</p> <p><i>Suggests the inclusion of A PUTT-PUTT mini golf set-up close to Boundary Street. It would attract 'locals' and tourists alike from Palm Beach to Murwillumbah, being suitable for ALL ages, singles, couples, groups and families. THE PUTT PUTT at Miami has operated SUCCESSFULLY for over 30 years bringing thousands of players to the area 12 months a year. I am unaware of the legal, financial or Franchise requirements, but a relatively small, inexpensive project could speedily be investigated and installed through Council. Parking space need not be a problem.</i></p>	<p>Putt putt golf is not prioritised within the plan of management. Mini golf was not raised as a popular potential land use within Stage 1 of community consultation.</p>
<p>Concern regarding generating rate payer burden (1).</p> <p>Concern regarding timing of proposed works in this economic climate and overburdening rate payers.</p>	<p>No additional economic burden is proposed for rate payers as a result of the proposed plan of management. Works are generally covered within existing budgets or subject to grant funding.</p>

Large scale proposals

Suggests a convention centre (2).

The submission proposes the northern parklands carpark, *would be far more productively utilised as an at grade convention and multi-use facility which could leverage off the existing tourism and accommodation infrastructure including partnering with the Club in delivering more conference and business tourists to the Tweed.*

The submission nominates a large multi-purpose room to host exhibitions, dinners over 500 people stating car parking can be elsewhere. The submission uses the Mackay entertainment and convention centre as an example.



A further submission was received supportive of *the strategic intent and the potential for economic stimulus that such a facility would be capable of generating in the immediate area* however acknowledging no feasibility study had been undertaken to date.

The area nominated for the proposed location of the suggested development is within Crown Reserve 80245. The reserve purpose for the area is *Public Recreation* and therefore is not consistent with the suggested facility. This proposal is also not consistent with the key messages of the desired future uses of the area received during Stage 1 of the community consultation.

The Tweed Shire Community Facilities Plan 2019-2029 does not identify sufficient current demand for a regional level facility as described. When compared to the demand for open space provision as identified in the Tweed Shire Open Space Strategy 2019-2029, the demand for the area to be used as open space parkland and for car parking is far greater than the demand for a facility of this nature at this stage.

Suggests the construction of a free kids water park (4).

The Tweed Chamber of Commerce submitted a proposal for a Water Play Park.

In principle support was provided by Tweed Tourism Co.
Two other individual submissions stated:

- *I also would favour some form of water park area for children to use,*
- *Create a free kids water park like in Broadwater.* This could relate to either the inflatable water park or the land based 'Rockpools' facility or both.

The Chamber's submission proposes a *free, family-friendly, inter-active water park designed for children and early teens* as part of or near Goorimahbah.



In considering a water park, the outcomes from the extensive community consultation during Stage 1 need to be reviewed.

Quantitatively, within the Stage 1 Report, Graph 3.2 summarised comments related to identified 'critical issues'. Comments included:

- 'no additional commercialisation' by 22% of responses;
- to 'leave the park as it is' by 13-14%;
- need for a water park by 4-7%.

Although not explicit, the above could indicate that a water play park by way of a Council-private sector partnership is unlikely to be supported by the community.

Further, when considering the responses qualitatively, 385 statements were made in relation to *commercialisation* of the precinct and/or activation of the area.

- 155 statements objected to commercialisation of the precinct.
- 146 statements referred to commercial use of the parkland and would support commercial uses and activities generally subject to conditions like for example, limiting commercial types (e.g. markets, or temporary structures or food and drinks only), scale (e.g. small events only) or impacts (e.g. only if the environment is preserved).
- 116 statements conveyed the importance of the existing parkland in its current state including environmental value or retention of a valued public asset or for passive recreation.

The proposed *Water-Play Park* which would comprise:

1. a *Toddler Wading Pool including water features that sprinkle and spray; stepping stones; and a Junior Water Slide.*
2. a *Big Kid's Splash Plaza including bubblers, spouts and geysers; misting ground sprays and overhead sprays; shooting fountains; and tipping buckets small and large (8,000litres).*
3. a *tiered seating, shaded embankment surrounding the Water-Play Park, allowing secure and safe access to the splash zones and enabling close supervision by parents and carers.*

The Chamber states the development *should be supplemented by a professional lifeguard team on duty seven days a week.* No feasibility study has been undertaken and no indication was provided regarding the capital or ongoing costs.

However, the Chamber believes ...Council should provide the private sector with the opportunity to express interest in the design and development of the park and that a Council-Private Sector Partnership could reduce the level of capital and recurrent expenditure which would be required to create, maintain and continuously improve a Water-Play Park which attracts tourists. The Chamber believes that such a Partnership would enable the provision of a Water-Play Park freely accessible to the public.

Further, the Chamber believes that a small scale, low-cost, unimagative water-play park will not attract the numbers necessary for it to act as a catalyst for Tweed City revitalization. The Chamber also states the proposed Park would achieve the objectives of the draft Plan, outlines social and economic benefits for the community.

The Chamber RECOMMENDS that:...

- *Council nominate the Water-Play Park Concept as a top priority development project.*
- *Council establish a Water Park Advisory Group.*
- *Council provide the Private Sector with the opportunity to express interest in the design and development of a Water-Play Park which not only delivers a free family-friendly recreation facility but also delivers an iconic tourist destination.*
- *Council invite NSW Government representation on the proposed joint Water Park Advisory Group to enable close connection with the key decision-makers in the State and Federal Governments.*

- 98 statements mentioned a water park, waterslides or water related facility. 48 statements were in support for the provision of a water park either within the precinct or within the Harbour, while an additional 20 statements were made in support of a land based water park. 27 statements objected to a water park. 3 statements suggested an ocean pool.

Based upon the feedback received, the draft plan of management states:

Investigate feasibility and opportunities for inclusion of small scale water play within the playground upgrade within Goorimahbah;

It is noted that during this public exhibition, this community opinion was reinforced. As noted elsewhere in this report, objections were received regarding:

- additional permanent attractions (3).
- inflatable water park (2).
- land based water park (1).
- commercialising the area (3).

The unfunded proposal is considered to be not consistent with the community's aspirations for the Precinct as conveyed in the extensive community consultation to date. Additionally the 'Council-private sector partnership' would be considered to be a level of commercialisation and permanent development of the site beyond what is acceptable to the community based upon the community consultation outcomes.

Following extensive community consultation to date, there has been insufficient support across the community for a water park of this scale and permanence to justify amending the draft plan of management to facilitate this proposal.

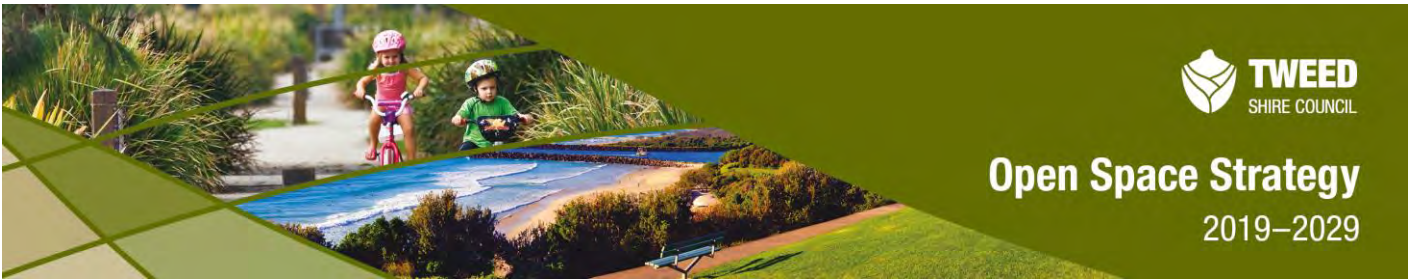
	<p>Should Council endeavour to pursue this development, it is recommended that community wide consultation is undertaken on this specific development at this scale and level of permanence. If supported by the community, the plan of management can be amended at that stage.</p>
--	--

7 Appendix A - Excerpt from Tweed Shire Open Space Strategy 2019-2029 Community Consultation Report Stage 2, August 2018.

Open Space Strategy 2019–2029



Community Engagement Report
Stage 2, August 2019



Tweed Heads

The following actions for the Tweed Heads local profile area were prioritised by the local community, either in-person at the Community Conversation hosted on Thursday 8 November 2018, via the online prioritisation tool or as part of an online discussion. The actions are listed in order of community priority. All related comments have been included for each action. Written submissions via post or email and private online submissions have been included in the *Open Space Strategy Community Consultation Report Stage 2, August 2019 (Appendix 2 & 3)*.

1. Action	High	Medium	Low	Total
Develop a Plan of Management to guide the future planning and management of Jack Evans Boat Harbour (JEBH) precinct. The precinct includes Chris Cunningham Park, the boardwalk, McMahons Beach, the ANZAC Memorial, Goorimahbah - Place of Stories and the area to the east of Seascape building, Jack Evans waterway, Ebenezer Park, the Old Aquatic Site and the area north of Coral Street.	34	5	2	41
<p>Comments</p> <ul style="list-style-type: none"> No support for large scale commercial activity in JEBH (7), retain its natural setting, for passive recreation and as a family friendly space (1), no support for a water park (3), no support for commercial activities funding open space improvements (1) Retain JEBH as one of the only safe swimming beaches in Tweed Heads (3) and as a passive recreation area for kayakers etc. (1), its safe for families and kids (4) Improve maintenance of the area (4) Review the overall provision of facilities and improve amenity (3) Provide more shade (5), near the playground (3) and barbeques (5), shaded seating (5), seating near the water's edge (1), rubbish bins (1), picnic tables (6), with shade (2), undercover areas (3), more accessible toilets (1), outdoor exercise equipment (e.g. North Bondi) (1), art installations (1) Upgrade the playground (2), include concrete table tennis tables (1), dog friendly areas (2), steel structured daybeds dotted along the water line facing the water (1), or multipurpose large timber sun lounges to enjoy the view (1) Provide more car parking to support the activities in the area (3) Manage the open space, without major development and retain as open space (1) Empty bins more regularly (2), especially after major events (1), and after weekends (1) Provide coffee (e.g. vans) (5), mobile eateries (3), and alfresco dining (1) Support for an inflatable water park similar to the one on the Gold Coast (4), it's great for kids and their families (3) Repurpose the area referred to as the Old Aquatic Club (2), consider food market or vans at this location (1) Provide facilities in Ebenezer Park, consider sharing Indigenous stories, public sculptures, steel structures providing shaded seating and tables (1) The area should not be a home for the homeless - they scare us and away and make visitors feel uncomfortable (1) Safety concerns when using the area, families are concerned about the anti-social behaviour in the park. This requires management by Council (1) Safety concerns when moss on the cement steps (1) Activate the area for locals and visitors (1) Build a grandstand for operas, and Christmas carols (1) Enhance the muddy bay with sand (1) Make this area like Broadwater Parklands, Qld (2) Consider beach themed activities (e.g. a volleyball net etc.) (1) Consider twilight markets along the foreshore pathway Retain the area as it is (2) It is difficult to view Anzac Day Ceremonies (1) Managing overflow pressures on car parking in JEBH from high density buildings, tourism on the Gold Coast, Nippers and Greenmount Surf Club. Improve the steps into the water at the south-western end of Ebenezer Park and the southern end of Little Duranbah Beach (1) In 2004, after 20 years of judicious dredging of the harbour, there were no Council walls on the southern side of the harbour, only gently sloping beaches. There was an abundance of sea grass, turtles and dolphins. Permission to 				

dredge was denied in 2004 and many trees, hundreds of square metres of beach and five walls have been washed into the harbour. A return to the well proven replenishment of beach areas with sand from the harbour would be a relief to all who have witnessed the degeneration of a fine harbour to a wading pool at low tide (1)

- Recent improvements to the boardwalk and planting were positive, future enhancement should be along these lines (1)
 - Tweed Heads is undersupplied with active open space, therefore the open space should be protected. Maintain as public open space, commercial activities benefit a few entrepreneurs (1)
- Total number of comments (32)

2. Action	High	Medium	Low	Total
Consider providing a fenced off leash dog area at Carlin Family Park or a section of Uniacke Park in consultation with the community.	24	9	7	40

Comments
<ul style="list-style-type: none"> • Support for an off leash dog park (4), support for an off leash area in Carlin Park (1), support for Uniacke Park (3) • Support for an off leash dog area, but not in these location (7), the areas are too busy, with too much vehicle traffic (2), the areas are too small (1), spread facilities so everyone is not trying to use the same area (1), and only supportive if dog owners pick up after their dogs (1) • Not enough car parking and residents are in apartment blocks (1) • Consider a section of Jack Evans Boat Harbour or surrounding parklands as an off leash area (2) • Consider the Old Aquatic Centre site as an off leash dog park (2), small area of Ebenezer Park (1), appreciate this may conflict with endangered bird nesting (1) • Consider a larger space with fewer distractions for dogs and safer for drivers (1) • There is a park behind Duranbah Beach with that would be more suitable for dogs and families (1) • No support for a dog off leash area (2), retain as passive open space (1), no support for a dog off leash area in Uniacke Park (1) • Provide an off leash area on the beach (1), consider Duranbah Beach (1), Tweed Coast is a long stretch of beach, and some areas are not being used by families (1) • Companion animals are extremely important for human wellness (1) • Keep it clean for walkers and beach goers (1) • Improve existing facilities and limit the size of the off leash area (1) <p>Total number of comments (21)</p>

3. Action	High	Medium	Low	Total
Review the provision of park facilities (including seating, picnic and barbeque facilities) and the provision of shade along John Follent Park.	23	9	3	35

Comments
<ul style="list-style-type: none"> • The area is well used for walking, swimming and exercising (5), and relaxing (1) • Support for upgrading facilities (5), and maintaining the facilities (1) • Provide public toilets (6), shaded areas (4), shaded seating (6), family-friendly seating (1), more rubbish bins (2), shaded picnic and barbeque facilities (2), showers for swimmers to rinse off (1), drinking fountains and refill stations/tap (2), shaded picnic tables (3), and chess boards (1) • Apply Universal Design principles in every playground design and ensure people with disabilities and their families feel connected and included in their communities (1) • The existing outdoor gym is highly utilised, provide additional exercise stations (1) • Allow for water activities (1) • Provide an off leash dog area (1), provide an off leash area on the beach (1) • What is the purpose of the concrete steps, they are unsightly (1) • Consider themed sculptures or signs to reflect the character of the area (1) • Provide steel structured day beds similar to those up at Southport near the Old Aquatic Centre (1) • Avoid overcrowding with facilities (1) • There are too many dogs in the area (1) • No support for public toilets (1) • Emptying rubbish bins daily (2) <p>Total number of comments (24)</p>



4. Action	High	Medium	Low	Total
Provide additional outdoor youth recreation facilities in Quota Park. Consider the provision of a multi-purpose court, handball court and rebound wall.	13	11	3	17
Comments <ul style="list-style-type: none"> Support for improving the facilities (3), as a family-friendly area (2), and for youth (3) Provide a basketball ring (1), skate ramp (2), a multi-purpose court (1) as schools are locked on the weekends (1) Provide a barbeque, and shaded area to increase utilisation (2) Protect part of the park for wildlife habitation. While it is not very suitable for mammalian wildlife due to its isolation, local birds would be able to use it, e.g. planting of a well-chosen dense shrubs for fairy-wrens and other small birds that would have lived here when the area was a wallum ecosystem. No support for sport or recreation facilities, we need more green areas (1), keep it family-friendly (1) Collaborate youth in the design of the park so they have ownership (1) Promote use by everyone across the area (1) Spread the facilities so it is easy to access for everyone and people are not accessing the same area (1) Total number of comments (10)				
5. Action	High	Medium	Low	Total
Develop a concept plan for Recreation Ground. Consider retaining the green space for markets and events and informal sport use, providing a district level playground including a multi-purpose court, a walking loop around the periphery of the park and providing associated park facilities.	13	10	4	27
Comments <ul style="list-style-type: none"> Support for additional play equipment (8), support for a bike and scooter track/circuit and for mobility scooters (4) Fence a grassed section as an off leash area (1), for safety and include benches (1) Improve access for people with disabilities or mobility impairments (2) Retain as it is (1), for events, markets and festivals and school sport (6) Provide more diverse activities to increase utilisation (1) Provide more shade (2) Upgrade the public toilet (3) Provide a basketball court (3), consider a BMX track (1), mark an athletics track and provide spectator seating (1) Address anti-social issues in the park, including homelessness (1) The layout of the park is not user-friendly and spread out the facilities (2) Improve facilities for the school's use (1) Total number of comments (20)				
6. Action	High	Medium	Low	Total
Identify suitable locations for additional street tree planting along Wharf Street, consider streetscaping works at the roundabout at Wharf Street and Frances Street and in established residential areas throughout Tweed Heads (where possible).	13	3	1	17
Comments <ul style="list-style-type: none"> Support for additional tree planting, for shade and amenity (7), not pine trees (1) Regularly maintain trees that are planted, have the trees pruned professionally (1) When planning tree planting locations consider and protect resident's views, particularly at river locations. This has occurred at end of Frances Street where the trees impact resident's outlook (1) Previously when trying to address such an issue resident was told one doesn't own the view (1) Wharf St is a disgrace, poor entry statement to the Tweed and remove sex shops (1) Total number of comments (9)				
7. Action	High	Medium	Low	Total
Continue to support river foreshore nourishment works associated with Council's maintenance dredging program.	11	7	1	19
Comments <ul style="list-style-type: none"> Protect and maintain waterways for the environmental, health, social and amenity values (3) Continue to nourish / flush the area beyond the bridge to the enclosed Anchorage lake area. Include Jack Evans Boat Harbour (1) Total number of comments (4)				

8. Action	High	Medium	Low	Total
As Council reviews its Bike Plan consider improving the path linkage from John Follent Park (Keith Compton Drive) to Keith Curran Park (to the end of Island Drive).	11	6	2	19
Comments <ul style="list-style-type: none"> Support for extending the path to Keith Curran Park (8) to improve safety (2) and connect with the new path improvements at the Anchorage (1) Residents of the Anchorage's would probably object (1) No support for the path through bushland Landcare is restoring Keith Curran Reserve with Council support (1), protect flora and fauna (1) Provide a path adjacent to Island Dve (1) Provide seating (1) Total number of comments (10) 				
9. Action	High	Medium	Low	Total
As Council develops its Public Toilet Strategy consider upgrading the public toilets in Ray Pascoe Park at the end of their useful life and review their existing location within the park.	9	6	4	19
Comments <ul style="list-style-type: none"> Support for a public toilet upgrade (7) the toilets are highly utilised by residents, workers, visitors and other open space users (4) Provide more toilets, picnic tables with shelters (1) Prioritise safe and well maintained toilets across the Shire (1) Total number of comments (10) 				
10. Action	High	Medium	Low	Total
Seek funding to improve access to the boating and recreational fishing facilities in Ray Pascoe Park on Kennedy Drive for all abilities.	8	10	10	28
Comments <ul style="list-style-type: none"> Support for access improvements (3) to increase diversity (1) Provide a roundabout to slow traffic at the intersection of Norman St and Kennedy Drive to reduce conflict between road users and boaties (3), or traffic lights (1), the intersection is dangerous and it is difficult to make a right hand turn during daylight hours (1) Provide more car parking (3) along Kennedy Drive (1), including boat and trailer parking (2) Unsure how parking issues can be resolved (2) Provide additional barbeques (1), more shaded seating (1) Provide an off leash dog area at the end of Crystal Waters Drive (1) Improvements will enable the community to enjoy the waterways (1) Ensure Universal Design principles are applied to the design of any improvements, including playground design to ensure access for everyone. This is vital to ensure social inclusion (1) Consider charging to access the facility (1) Total number of comments (12) 				
11. Action	High	Medium	Low	Total
Review future management options for Tom Beatson Outlook Razorback and consider removing the public toilet.	7	7	2	16
Comments <ul style="list-style-type: none"> Support for improving the management of the area for residents, tourists and for weddings (6), the area has so much potential and should be acknowledged as a major lookout, the area is unique, offers good views and provides opportunities for plane spotting (5) Support for the removal of the public toilet (6) The area is not well maintained (2) Improve the paths (2) and seating (1) If improved facilities (e.g. undercover area) were provided Council could then charge a fee (1) Manage the access by the public and bushland management (1) It would be great to use the bush for walking (1) 				



<ul style="list-style-type: none"> • Increase the community's knowledge of the cultural heritage values (1) • No support for removing the toilets (1) <p>Total number of comments (12)</p>				
12. Action	High	Medium	Low	Total
As Council reviews its Bike Plan consider improving east west linkages in the north of Tweed Heads (between Kennedy Drive and Bay Street) and consider a linkage to Recreation Ground.	7	6	1	14
Comments				
<ul style="list-style-type: none"> • Support for making pathways safer (1), and the health benefits (3) • Are the roads wide enough to accommodate pathways (1) <p>Total number of comments (4)</p>				
13. Action	High	Medium	Low	Total
Consider upgrading park facilities and improving the amenity of Ducat Park, remove the single swing set and retain as an off leash area.	5	12	4	21
Comments				
<ul style="list-style-type: none"> • Support for upgrading park facilities and park amenity (1), the park is underutilised (1) • The park looks and feel unsafe (2), improve site lines within the park (1) • Retain the park as an off leash dog area (1) • Provide a skate park (1) • Upgrade the play equipment so kids and dogs can play (1) • Improve management of the pond, it smells (1), consider changing the pond from permanent to ephemeral to make it suitable to more native wallum frogs, rather than cane toads. If a low pH environment can be created, it will still be suitable for some unusual local native frogs and less suitable for mosquitoes (& cane toads) (1) • Low priority given to upgrading these park facilities, play equipment, toilets or BBQ's (4) • Improving the park facilities may result in conflict between the different park users and local residents (1) • Distribute the facilities within the park to improve access for everyone and reduce conflict between different users (1) • No support for public toilets in Ducat Park, it will result in conflict between user groups and impact residents (1) <p>Total number of comments (13)</p>				
14. Action	High	Medium	Low	Total
Upgrade Uniacke Park in consultation with the local community.	4	10	7	21
Comments				
<ul style="list-style-type: none"> • Support for improving Uniacke Park (2), the park is underutilised (2) • Predominantly aged community around the park (1) • Provide a playground or kids activities (2), seating (2), shade (1), paths for walking (2), picnic table (1) • Improve maintenance of the park (2) • Retain the area for dogs (1) <p>Total number of comments (7)</p>				
15. Action	High	Medium	Low	Total
Upgrade Jack Chard Park as a neighbourhood park in consultation with the local community and St Joseph's Primary School.	3	11	5	19
Comments				
<ul style="list-style-type: none"> • Support for upgrading the park (5) • Provide public toilets (1), a community garden (2), seating (2), shade (2) • Provide an intergenerational park, which appeals to young and old and involve the school (1) • The green space is important for the kids to run but it is wasted, there aren't many options in the area (1) • The park is too small (1) • Consider fencing it for the school (2) • Distribute the facilities within the park to improve access for everyone and reduce conflict between different users. <p>Total number of comments (8)</p>				



16. Action	High	Medium	Low	Total
Support Tweed Heads Croquet Club Inc. to develop a club development plan and assist with grant applications for clubhouse upgrades.	3	5	8	16
Comments				
<ul style="list-style-type: none"> Support for the development a club management plan (2) Consider another use for the site to meet the needs of the broader community (4), consider for community events (2) or community and family use (2) Total number of comments (5) 				

Additional comments at the in-person Community Conversation

- Provide an off leash dog area in the park next to Coral Street beach along the Tweed River (1)
- Install bollards in the park to prevent personal trainers parking their vehicles on Chris Cunningham Park (1)
- Increase knowledge/education and interpretation of cultural heritage, where appropriate (1)
- The Old Aquatic site is currently used for overflow parking. This is essential for people attending events in Cunningham Park, such as the Quicksilver Pro Gold Coast, dragon boat events, Nippers events, Cooly Rocks On and other fundraising events (1)
- Following events in Jack Evans Boat Harbour, ensure the bins are emptied, the bins are overflowing for up to 2 to 3 days following.

Online Discussion Forum (public): Comments

- Provide natural shade in Jack Evans Boat Harbour and the Wharf Street precinct. Built shade is prone to vandalism (1)
- Support the overall plan for the area (1)
- The various components have been overlooked in the plan (1)
 - Too often Council lists attributes into a plan, but fails to fund components or funds just a few token items - making a mockery of the presumed holistic approach.
 - A recent request for shade trees resulted in Council planting 2 instead of 6 and the species were not shade trees. Prioritise the planting of large shade trees in Council parks.
 - Include timeframes for delivery in the draft plan.
- Leave Jack Evans natural (1) and largely as it is (1) without noisy commercial activities (1)
- The current sole recreation vendor needs to be supported and encouraged. Any suggestion that Jack Evans needs noisy commercial activity completely ignores the demographics of the area and their quiet enjoyment of the environment. Provide more dog watering stations, better access for people with disabilities into the water, more shade trees, more barbecues and picnic shelters.
- Provide public toilets in John Follent Park, there is demand for toilets and they should be closed at night (2) or time lock the toilets (1), place the toilet in a location that does not impact resident's views.



WHAT IS IMPORTANT TO THE TWEED HEADS COMMUNITY?

At the in-person Community Conversation, the community were asked what is important to them. The themes are listed in order of priority.

Theme	
Diversity	<ul style="list-style-type: none"> Areas to exercise and being physically active Open space Larger open space for events and functions Multi-use spaces Open spaces that are enjoyable Playing sport Outdoor exercise equipment Areas for children and families Spaces for people to rest and relax
Quality	<ul style="list-style-type: none"> Open spaces that are regularly maintained and upgraded Prioritise budget to accommodate community needs Improve amenities without major changes Open space free of commercial activities Open space is available for everyone to enjoy Ensure adequate open space is provided Shade
Social inclusion	<ul style="list-style-type: none"> Community spaces meet the needs of different age groups and are welcoming for everyone Spaces to meet and enjoy time with family and friends and for socialising Coffee and food
Environment and cultural protection, conservation and appreciation	<ul style="list-style-type: none"> Protect the beautiful natural environment Retain all open space including waterways in their natural state Opportunities to connect with nature, to sit and contemplate Access to Aboriginal and Torres Strait Island cultural sites (where appropriate) and education about the sites Encourage residents to care for the environment Restrict access to sensitive areas
Connectivity/Trails	<ul style="list-style-type: none"> Walking paths in parks and green spaces to reduce stress Safe pathways that are connected Bikeways and trails that young people can use
Waterways	<ul style="list-style-type: none"> Stand up paddle boarding on calm waterways Boating on the Tweed River Water activities
Accessibility	<ul style="list-style-type: none"> Access for everyone
Dogs	<ul style="list-style-type: none"> Provide safe and larger areas to walk and exercise dogs Provide fenced dog areas and reduce the speed of traffic around them Off leash areas on beaches
Provision of facilities	<ul style="list-style-type: none"> Picnic tables (shaded), shelters, barbeques, and play equipment for children



8 Appendix B – Sample media

Sample media release, Tweed Link article and social media post.



A Tweed Shire Council publication 02 6670 2400 or 1300 292 872 | Issue 1177 | 4 November 2020 | ISSN 1327-8630

Tweed Shire Council wishes to acknowledge the traditional Aboriginal people of the Bundjalung Nation who have lived in and around their physical and spiritual lands from the forests, rivers, lakes and streams of this beautiful valley over many thousands of years as the traditional owners and custodians of these lands.



Council is seeking feedback on the draft Jack Evans Boat Harbour Plan of Management. Have your say at www.yoursaytweed.com.au/FRH

TARGET 160 Last week we each used **197L a day**
as at 30 October 2020

Waste tip  Less to Landfill

Tricking flies 101
During the week, layer your green bin. Alternate leaves, branches, cardboard (pizza boxes are great), newspaper and food scraps.
Keep seafood/meat in the fridge or freezer, then place in bin on collection day. This keeps your bin cleaner and fresher even in hotter months, and keeps the flies away!

In brief ...

Native trees planting project to make Tweed Heads a cool town
Council's planting project to increase natural shade is progressing well in Tweed Heads South.
Cactus palms are being removed from the centre median on Mirringford Drive, between Dry Dock Road and Heffron Street, and replaced with native brush box and eucalypti quandong trees – with more planting of other native trees along the riverbank to come.
Projects like this are part of Council's Cool Towns Urban Forest Program which is currently being developed.
For more information visit www.yoursaytweed.com.au/cool-towns



Become a Tweed wildlife expert
From grass trees to grey butcherbirds, the latest free Tweed Shire Council **Wildlife** newsletter is full of useful information to improve urban and rural properties.
Discover that the common blossom bat isn't all that common – and what native plants you can put into your backyard to attract more native animals.
So what are you waiting for? To subscribe and find out more about the Tweed's internationally significant environment, visit www.tweed.nsw.gov.au/subscribe

Have your say on Jack Evans Boat Harbour

Tweed residents are being encouraged to have their say on Council's draft Jack Evans Boat Harbour Plan of Management.
The draft plan provides guidelines to ensure the precinct is protected and used as the recreational and tourist centerpiece for Tweed Heads City centre.
A four-page companion guide has been developed to summarise the draft plan's proposals and to explain what a plan of management is. It also covers how topics raised during the community consultation, which took place in 2018, have been addressed and incorporated into the draft plan.
Council is now seeking public feedback on the draft plan to ensure it reflects the values and aspirations of the Tweed community.
The document is also consistent with the Tweed Shire Open Space Strategy and Council's Commercial Recreation Activities on Public Open Space policy.
The draft Jack Evans Boat Harbour Plan of Management is on exhibition until Tuesday 8 December 2020. For more information and to have your say, visit www.yoursaytweed.com.au/FRH

Council staff working hard to keep up with DA demands

While COVID-19 has impacted many sectors of the economy, it has not slowed the number of development and building applications being submitted to Tweed Shire Council – in fact there has been a significant increase in application numbers.
In the first four months of the 2020/21 financial year, Council has received more than 380 development applications and 62 modification applications. In 2019/20 a total of 863 development applications were received, resulting in the approval of development at a total cost construction value of more than \$21.3 million.
Director of Planning and Regulation Vince Connell said staff were working at full capacity to keep up with demands, ahead of a busy pre-Christmas period.
"These demands don't just fall on our planning and building staff. It is a whole-of-Council effort, with the technical expertise of our Engineering, Sustainability and Environment, Parks and Active Communities and Waste units all being drawn upon," Mr Connell said.
Council determination times are currently tracking at a rate of 60 days for all development applications, which is below the State Government's average target of 84 days.
The majority of development applications are for smaller and medium-scale residential developments, however Council also services the demands of a number of major approved and emerging development sites such as Kings Forest, Cotoko, Gales Kingsdell and Dunise Park.
In response to the current COVID-19 crisis, the NSW State Government is also challenging both its own planning services, as well as local councils, to make major efficiency improvements and adapt to Statewide electronic assessment systems, in order to maintain an active and productive building and construction industry to stimulate the broader economy.
"We expect application activity to continue to increase, particularly as Council adapts its judgement systems through the NSW State Planning Portal," he said.
"However while meeting our performance targets may not be possible in the upcoming months, Council staff will be working hard to deal with your application as efficiently as we can, and ask for your patience as we work through any outstanding matters."
"Despite these constraints, we remain committed to supporting the planning and building industry, and the Tweed community, to navigate their way through the highly complex NSW planning system and emerging COVID-19 challenges."
Council is requesting that any development applications be received before Tuesday 8 December 2020 to ensure they are lodged into the Council system before the end of the year.
Any development applications received after this date may not be lodged until 4 January 2021.
From 1 January 2021 all development applications, complying development certificates and construction certificates must be submitted via the NSW Planning Portal.

Annual pontoon licences set to be introduced to Tweed

There's still time for Tweed residents to view and make submissions on Council's Draft Canal Management Policy.
The policy seeks to provide guidance on Council's position on matters relevant to canals, from maintenance of beaches, unapproved structures, the use and storage of vessels, to licensing of pontoons and the fees charged.
Council manages nine canal estates – comprised of both navigable and non-navigable waterways – and the foreshores adjacent to several hundred residential properties.
Council resolved to apply an annual pontoon license fee in 2008, however while the fee was adopted, it has not been charged, it is now necessary to commence charging the annual pontoon licence fee as a means of raising additional revenue for maintenance in canal estates.
The fee will be approximately \$250 per year and will commence in 2022.
The Draft Canal Management Policy is on exhibition until Wednesday 18 November 2020.
For more information, including how to make a submission, visit www.yoursaytweed.com.au/draft-canal-management-policy



Council manages nine canal estates – comprised of both navigable and non-navigable waterways – and the foreshores adjacent to several hundred residential properties.

Media Release



Draft Jack Evans Boat Harbour plan on exhibition

Have your say by Tuesday 8 December

Monday 26 October, 2020



A view of Jack Evans Boat Harbour, Tweed Heads.

Members of the public can now have their say on Council's draft Plan of Management for the Jack Evans Boat Harbour precinct.

The draft plan provides guidelines to ensure the precinct is protected and used as the recreational and tourist centrepiece for Tweed Heads city centre.

A four-page companion guide has been developed to summarise the plan's proposals and to explain what a plan of management is. It also covers how topics raised during the community consultation, which took place in 2018, have been addressed and incorporated in the draft plan.

Council is now seeking public feedback on the draft plan to ensure it is reflective of the values and aspirations of the Tweed community.

The document is also consistent with the Tweed Shire Open Space Strategy and Council's Commercial Recreation Activities on Public Open Space policy.

The draft Jack Evans Boat Harbour Plan of Management is on exhibition until Tuesday 8 December 2020. For more information and to have your say, visit yoursaytweed.com.au/JEBH.

Media Release Subscription Service | Communications and Customer Experience
Corporate Services

☎ (02) 6670 2136

✉ PO Box 815, Murwillumbah NSW 2484

✉ communications15C@tweed.nsw.gov.au

🌐 www.tweed.nsw.gov.au

Civic and Cultural Centre, Tumbulgum Road
Murwillumbah NSW 2484

Follow Council on: [f](#) [i](#) [t](#) [g+](#) [in](#)

Customer Service: (02) 6670 2400 or 1300 292 872 | ABN: 90 178 732 496

Please consider the environment before printing this notice. Use double-sided paper & separate all 35 A4 loose-leaf pages to recycle.



Tweed Shire Council
Written by Steve Titman [?] · 2m · 🌐

👉 Have your say on our draft Jack Evans Boat Harbour Plan of Management.


The draft plan provides guidelines to ensure the precinct is protected and appropriately used as the recreational and tourist centrepiece for Tweed Heads city centre.

There's also a short guide available which:

- ◆ explains what a plan of management is
- ◆ provides a summary of the proposals in the draft plan
- ◆ outlines how the big topics raised in the community consultation have been addressed.

✅ The draft Jack Evans Boat Harbour Plan of Management is on exhibition until Tuesday 8 December 2020.

For more information and to have your say, visit yoursaytweed.com.au/JEBH



Boost Unavailable

👍 Like 💬 Comment ➦ Share ⋮



TWEED

SHIRE COUNCIL

Customer Service | 1300 292 872 | (02) 6670 2400

tsc@tweed.nsw.gov.au

www.tweed.nsw.gov.au



PO Box 816

Murwillumbah NSW 2484