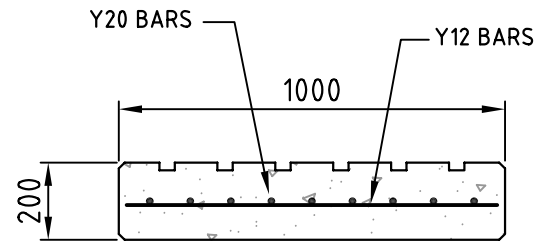
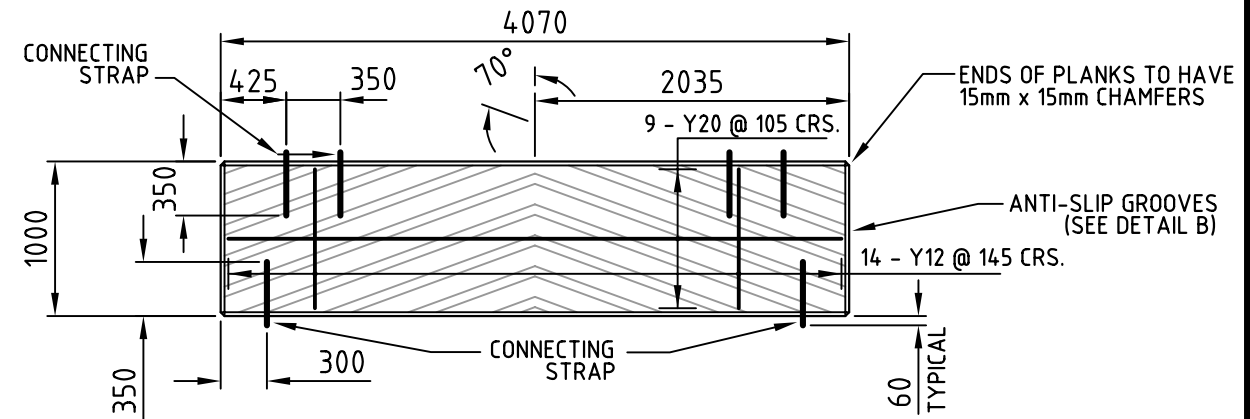


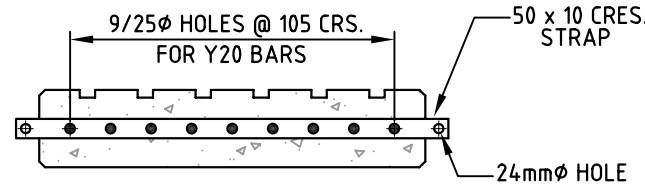
DETAIL B



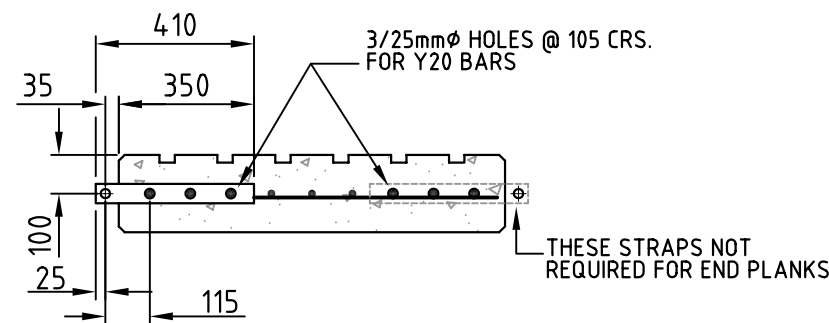
TYP. PLANK SECT.



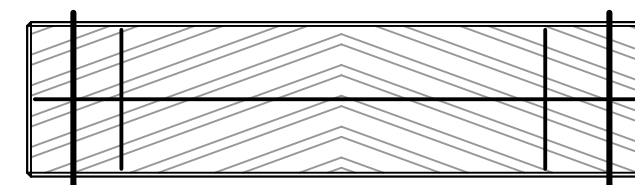
START PLANK PLAN



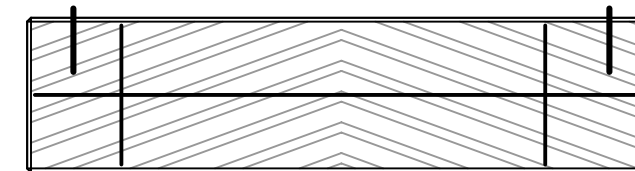
INTERMEDIATE PLANK



START & END PLANK SECT.



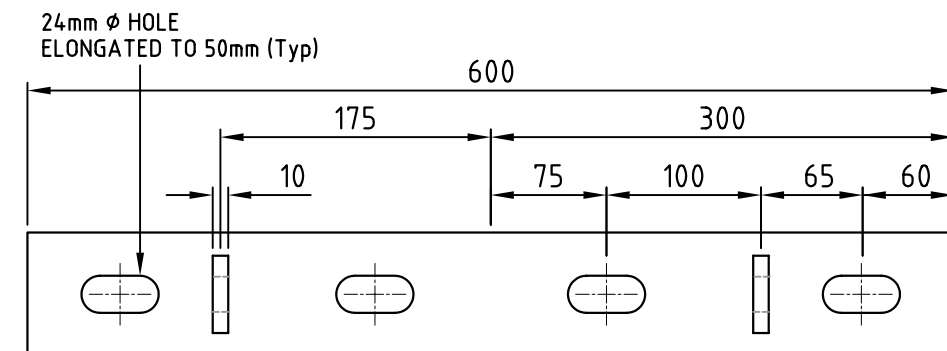
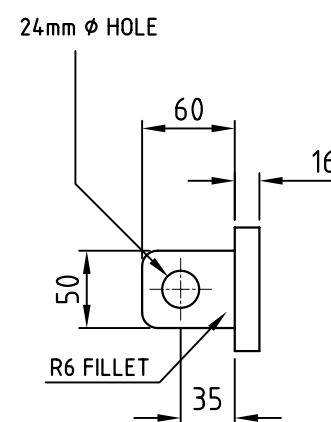
INTERMEDIATE PLANK PLAN



END PLANK PLAN

NOTES:

1. ALL DIMENSIONS ARE IN MILLIMETRES U.N.O
2. ALL CONCRETE AND REINFORCING MATERIALS AND WORKMANSHIP SHALL BE IN ACCORDANCE WITH A.S.3600
3. CHARACTERISTIC COMPRESSIVE STRENGTH OF CONCRETE (f_c) AT 28 DAYS SHALL BE 45 MPa.
4. REINFORCING BARS DESIGNATED 'Y' SHALL BE GRADE 400 Y BARS TO A.S.1302.
5. CLEAR COVER TO REINFORCEMENT SHALL BE 65mm. U.N.O.
6. EDGES OF PLANKS TO HAVE 15 x 15 CHAMFERS.
7. MASS OF 4M. LONG CONCRETE PLANK = 2300Kg.
8. ALL REINFORCING BARS, INCLUDING TIE WIRES TO BE GALVANISED.
9. CRES. DESIGNATES CORROSION RESISTANT STEEL (STAINLESS STEEL).
10. ALL CRES, INCLUDING BOLTS, NUTS AND WASHERS SHALL BE GRADE 316 U.N.O.
11. CRES. BOLTS SHALL HAVE ROLLED TREADS COATED WITH NICKEL BASED GREASE ANTI-SEIZE LUBRICANT.



BRACKET - DETAIL A

B	DRAWINGS ADOPTED FOR ISSUE TO PUBLIC	R.A.E.	5.2004
A	RE-ISSUED	R.A.E.	4.2004
ISSUE	AMENDMENT DETAILS	INITIALS	DATE

TWEED SHIRE COUNCIL
PLANNING AND DESIGN UNIT

COUNCIL OFFICES
 TUMBULGUM ROAD,
 MURWILLUMBAH,
 NEW SOUTH WALES, 2484

PHONE MURWILLUMBAH 02 66702400
 FAX MURWILLUMBAH 02 66727513
 EMAIL imunro@tweed.nsw.gov.au

DESIGN ENGINEER (SIGNED)	DATE	1.2004	
PLANNING & DESIGN MGR.	DATE	1.2004	
DESIGNED	R.A.E.	4.2001	DESIGN NO.
DRAWN	A.R.W.	4.2001	SURVEY NO.
CHECKED	G.C.	1.2004	PROGRAM NO.
HORIZONTAL DATUM	ISG	REDUCTION RATIO	
VERTICAL DATUM	AHD		

PROJECT:	WATERWAY STANDARDS
PLAN TITLE:	STANDARD BOAT RAMP PLANK DETAIL

DRAWING NUMBER:	S.D.602
SHEET 1 OF 1 SHEETS	
ISSUE	A B