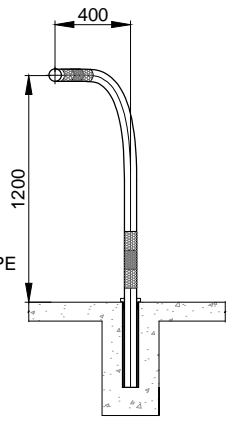
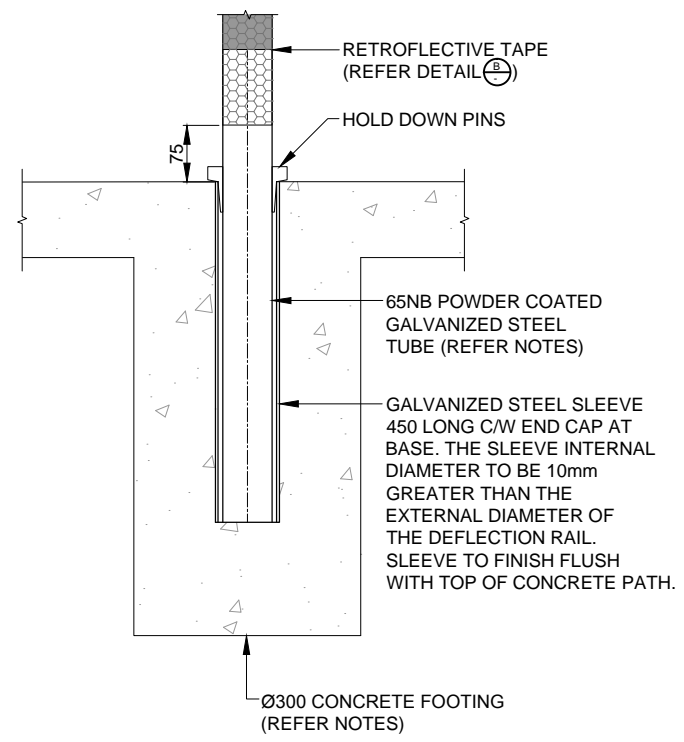


ELEVATION

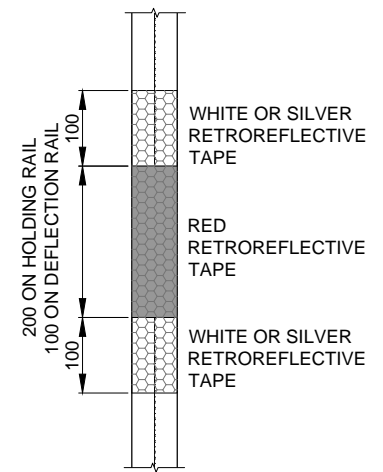


END ELEVATION



DEFLECTION RAIL SLEEVE

DETAIL A
SCALE 1:5 (A3)

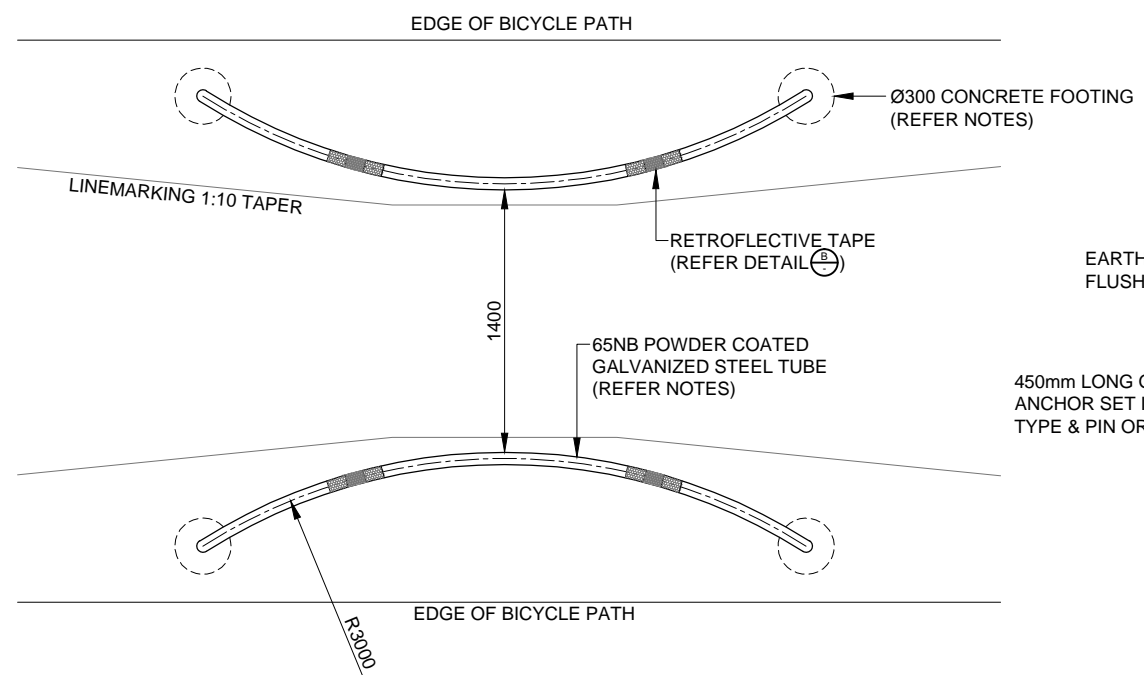


RETROFLECTIVE TAPE REQUIREMENTS

DETAIL B
SCALE 1:5 (A3)

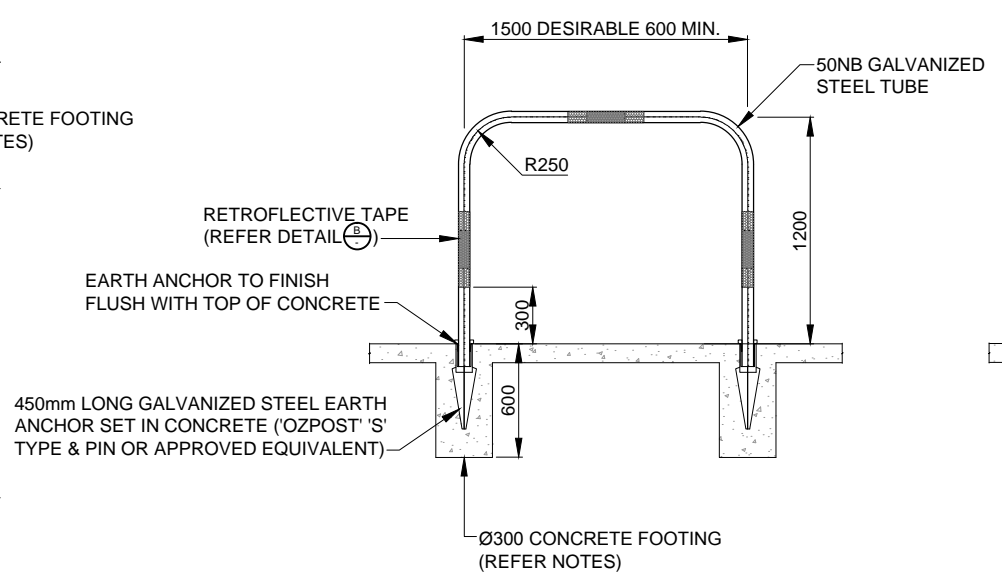
NOTES:

- DEFLECTION RAILS TO BE INSTALLED IN ACCORDANCE WITH 'AUSTRROADS PART 14 (BICYCLES).
- CONCRETE GRADE TO BE N25 TO AS1379 & AS3600.
- GALVANIZED STEEL TUBE TO BE IN ACCORDANCE WITH AS/NZS1163.
- GALVANIZED STEEL ON THE DEFLECTION RAIL TO BE POWDER COATED IN 'DULUX' 'YELLOWGOLD Y14' (OR APPROVED EQUIVALENT).
- COMMERCIALY AVAILABLE DEFLECTOR RAILS, SUCH AS 'SECURABIKE BAB31F' (OR APPROVED EQUIVALENT) MAY BE USED.
- ALTERNATE BANDS OF WHITE OR SILVER (2 x BANDS) & RED (1 x BAND) TO BE CLASS 1A RETROREFLECTIVE SHEETING TO AS1906.2 (TO BE INSTALLED AS PER DETAIL B).
- FOOTINGS TO BE CLEAR OF EXISTING UNDERGROUND SERVICES.
- ALL DIMENSIONS IN MILLIMETRES.



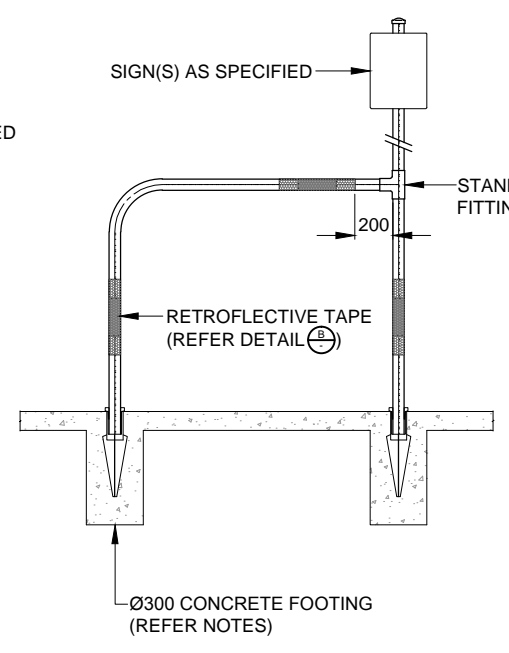
PLAN

DEFLECTION RAIL INSTALLATION DETAILS
SCALE 1:20 (A3)



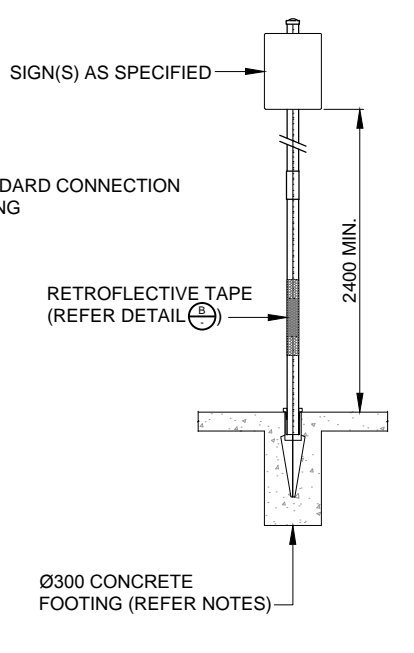
ELEVATION

HOLDING RAIL



ELEVATION

REST RAIL INSTALLATION DETAILS
SCALE 1:20 (A3)



END ELEVATION

HOLDING RAIL C/W SIGN POST

B	REST RAIL ADDED, TITLE & NOTES AMENDED & PLAN FORM UPGRADED	A.R.	11.2015
A	ORIGINAL ISSUE	I.B.	08.2008
ISSUE	AMENDMENT DETAILS	INITIALS	DATE



DESIGN UNIT
COUNCIL OFFICES
TUMBULGUM ROAD,
MURWILLUMBAH,
NEW SOUTH WALES 2484
PHONE 02 6670 2400
FAX 02 6672 7513
WEBSITE www.tweed.nsw.gov.au

DESIGN ENGINEER	<i>W. Boyd</i>	DATE 02.11.15
DESIGN MANAGER	<i>P. Meyer</i>	DATE 02.02.15
DRAWN	ENGINEERING & OPERATIONS DESIGN UNIT	
SCALE	AS SHOWN	

PROJECT:	STREET FURNITURE STANDARDS
PLAN TITLE:	BIKEWAY FURNITURE DETAILS

DRAWING NUMBER:	S.D.404
	DEC 2015

