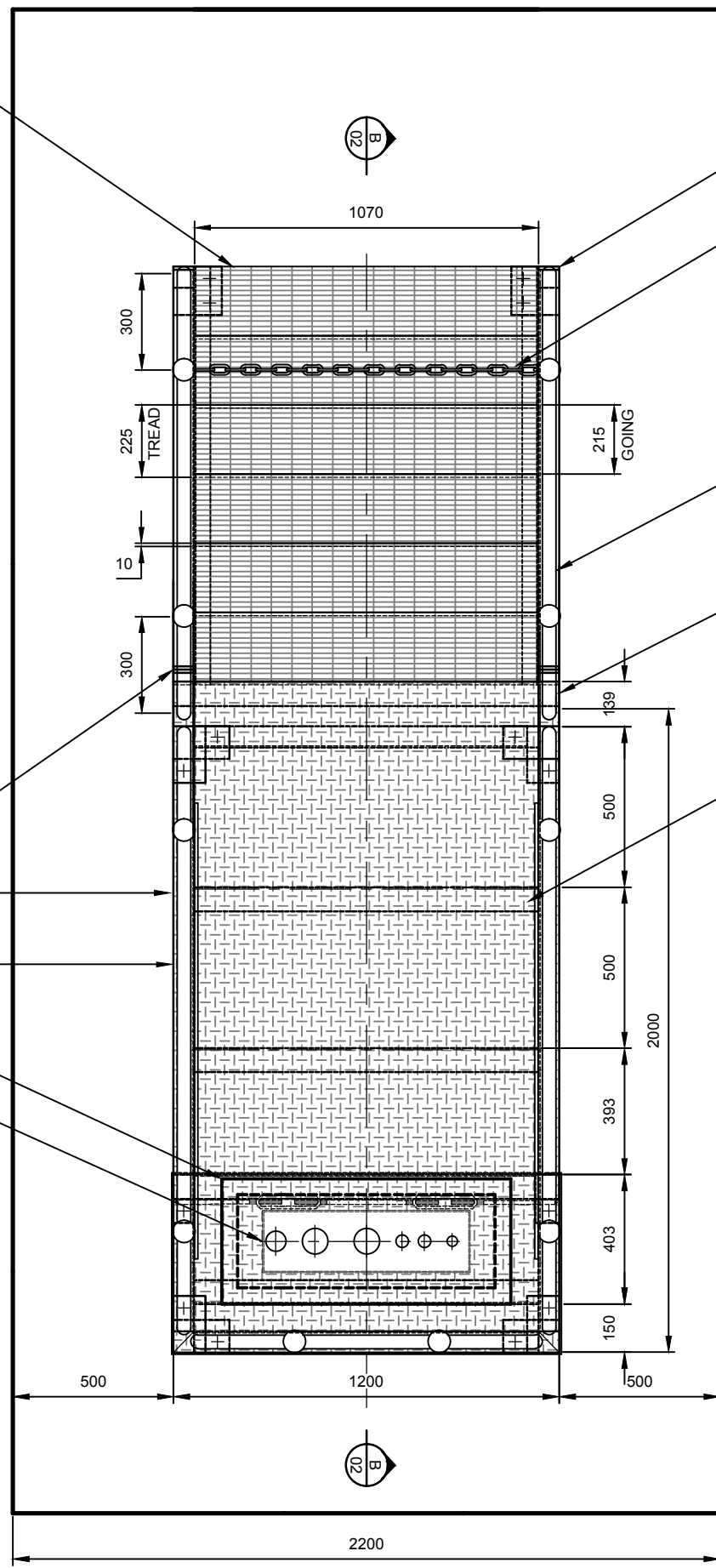


'WEBFORGE' GMS STAIR TREADS (TYPE 1 - TC 325 MSG). STAIR TREADS 225 x 1070 x 32 WITH SERATED PATTERN AFFIXED TO 50 x 50 x 5 ANGLE WELDED TO STRINGER



PLAN
SCALE 1:20 (A3)

150 x 150 x 10 BASEPLATE WELDED TO STRINGER. 14Ø HOLES FOR 12Ø SS CHEMSET BOLTS
CHAIN AND PADLOCK ATTACHED TO STANCHIONS. WARNING SIGN RE ELECTRICAL DANGER ATTACHED

'WEBFORGE' MONOWILLS HANDRAIL SYSTEM (OR SIMILAR) (REFER DETAILS SHEET 03)

75 x 75 x 5 GMS ANGLE WELDED TO STRINGER. (REFER DETAILS SHEET 02)

75 x 75 x 5 GMS ANGLES WELDED TO FRAME

6mm GMS CHECKERPLATE WELDED TO LANDING FRAME

125 x 65 GMS PFC FRAME BASEPLATE (REFER DETAILS SHEET 03)

6mm THICK GMS CHECKERPLATE AFFIXED TO POSTS UPON COMPLETION OF CONDUIT INSTALLATION. M8 COUNTERSUNK 304 SS SOCKET HEAD SCREW 12 LONG AT 400 (APPROX.) CENTRES. DRILL & TAP POST, COUNTERSINK CHECKERPLATE & COLD GALVANIZE THREADED HOLES.

100 x 100 x 6 SHS GMS POSTS

BASEPLATE (REFER DETAILS SHEET 03)

NOTE: CROSS BRACING TO BE INSTALLED IF SLAB TO FLOOR HEIGHT EXCEEDS 1500mm. (REFER NOTES AND SECTION 'C' ON SHEET 03)



NOTE:
MAXIMUM FLOOR HEIGHT OF GANTRY TO BE NO MORE THAN 2.6m ABOVE GROUND LEVEL

SWITCHGEAR CABINET (REFER S.D. 801/06-07)

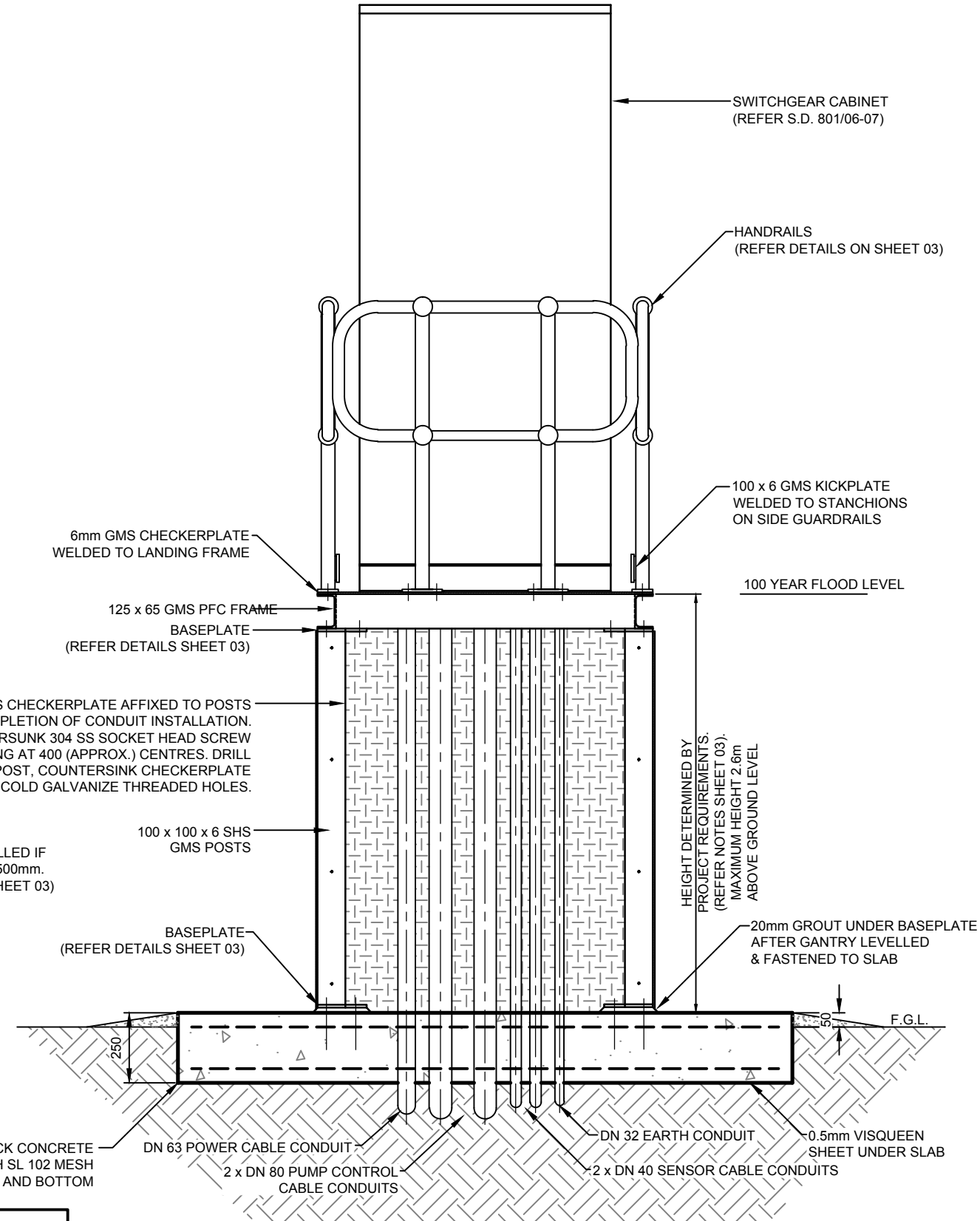
HANDRAILS (REFER DETAILS ON SHEET 03)

100 x 6 GMS KICKPLATE WELDED TO STANCHIONS ON SIDE GUARDRAILS

100 YEAR FLOOD LEVEL

HEIGHT DETERMINED BY PROJECT REQUIREMENTS. (REFER NOTES SHEET 03). MAXIMUM HEIGHT 2.6m ABOVE GROUND LEVEL

20mm GROUT UNDER BASEPLATE AFTER GANTRY LEVELLED & FASTENED TO SLAB



SECTION A
SCALE 1:20 (A3)

PRELIMINARY
AWAITING APPROVAL

ISSUE	AMENDMENT DETAILS	INITIALS	DATE
B	NOTES AMENDED & PLAN FORM UPGRADED	G.P.C.	06.2015
A	ORIGINAL ISSUE	G.P.C.	03.2008



DESIGN UNIT
COUNCIL OFFICES
TUMBULGUM ROAD,
MURWILLUMBAH,
NEW SOUTH WALES 2484
PHONE 02 6670 2400
FAX 02 6672 7513
WEBSITE www.tweed.nsw.gov.au

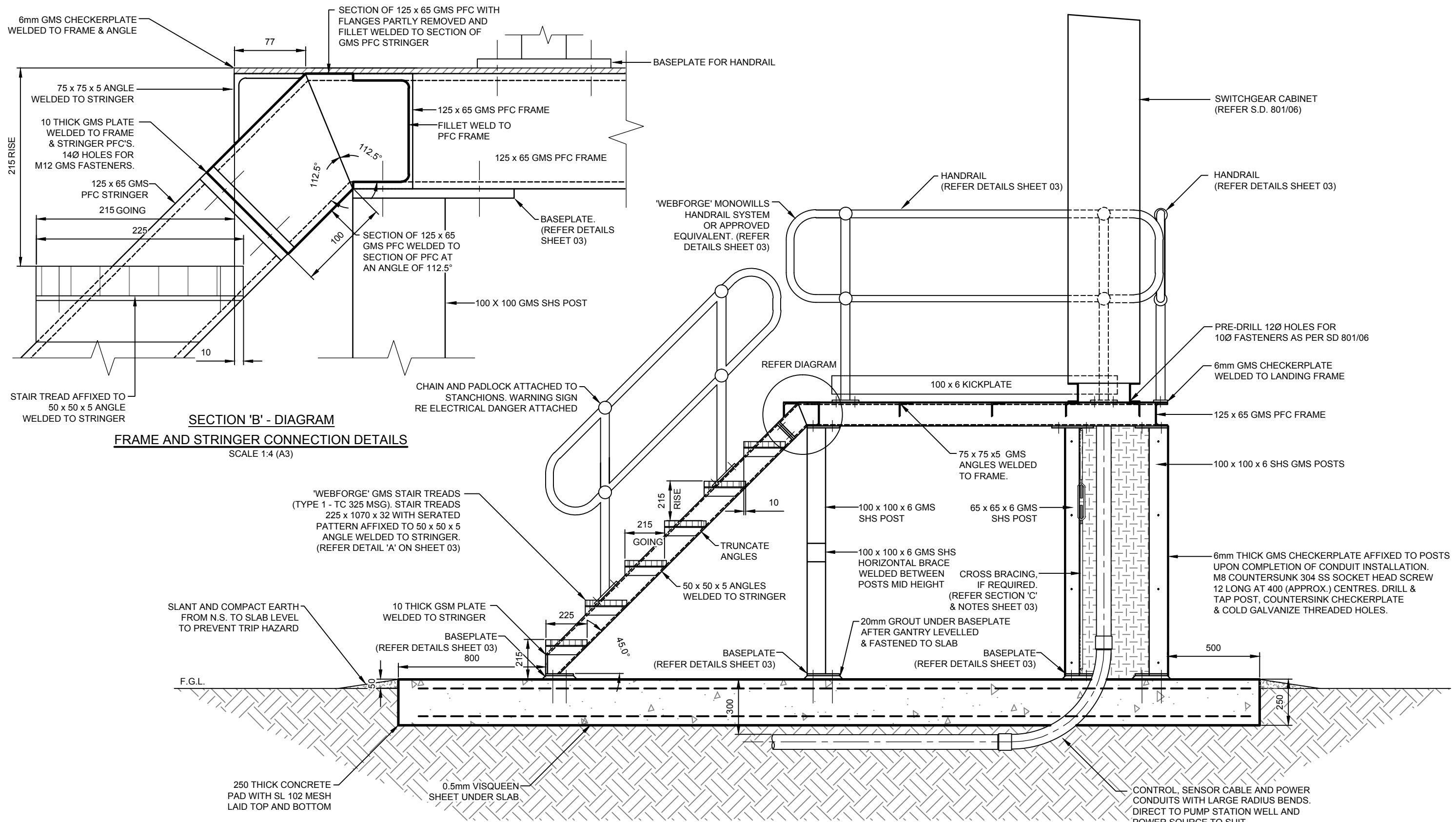
DESIGN ENGINEER	DATE
DESIGN MANAGER	DATE
DRAWN	ENGINEERING & OPERATIONS DESIGN UNIT
SCALE	AS SHOWN

PROJECT: SEWERAGE WORKS STANDARDS
PLAN TITLE: FLOODPROOF SEWER PUMP CONTROL CABINET GANTRY DETAILS (SHEET 1 OF 4 SHEETS)

DRAWING NUMBER: S.D.274-01
JUNE 2015



ACAD FILE No: G:_AAA TSC STANDARD DRAWINGS\200 SEWERAGE WORKS\S.D.274 (June-15 Rev B).dwg



SECTION 'B' - DIAGRAM
FRAME AND STRINGER CONNECTION DETAILS
 SCALE 1:4 (A3)

SECTION B
 SCALE 1:20 (A3) 01

NOTE:
 MAXIMUM FLOOR HEIGHT OF
 GANTRY TO BE NO MORE THAN
 2.6m ABOVE GROUND LEVEL

NOTE: WHERE CONDUITS EXTEND
 BEYOND THE SLAB THEY ARE TO BE
 PROTECTED AS PER COUNTRY ENERGY
 DRAWING No. CEM7201.13

PRELIMINARY			
B	NOTES AMENDED & PLAN FORM UPGRADED	G.P.C.	06.2015
A	ORIGINAL ISSUE	G.P.C.	03.2008
ISSUE	AMENDMENT DETAILS	INITIALS	DATE

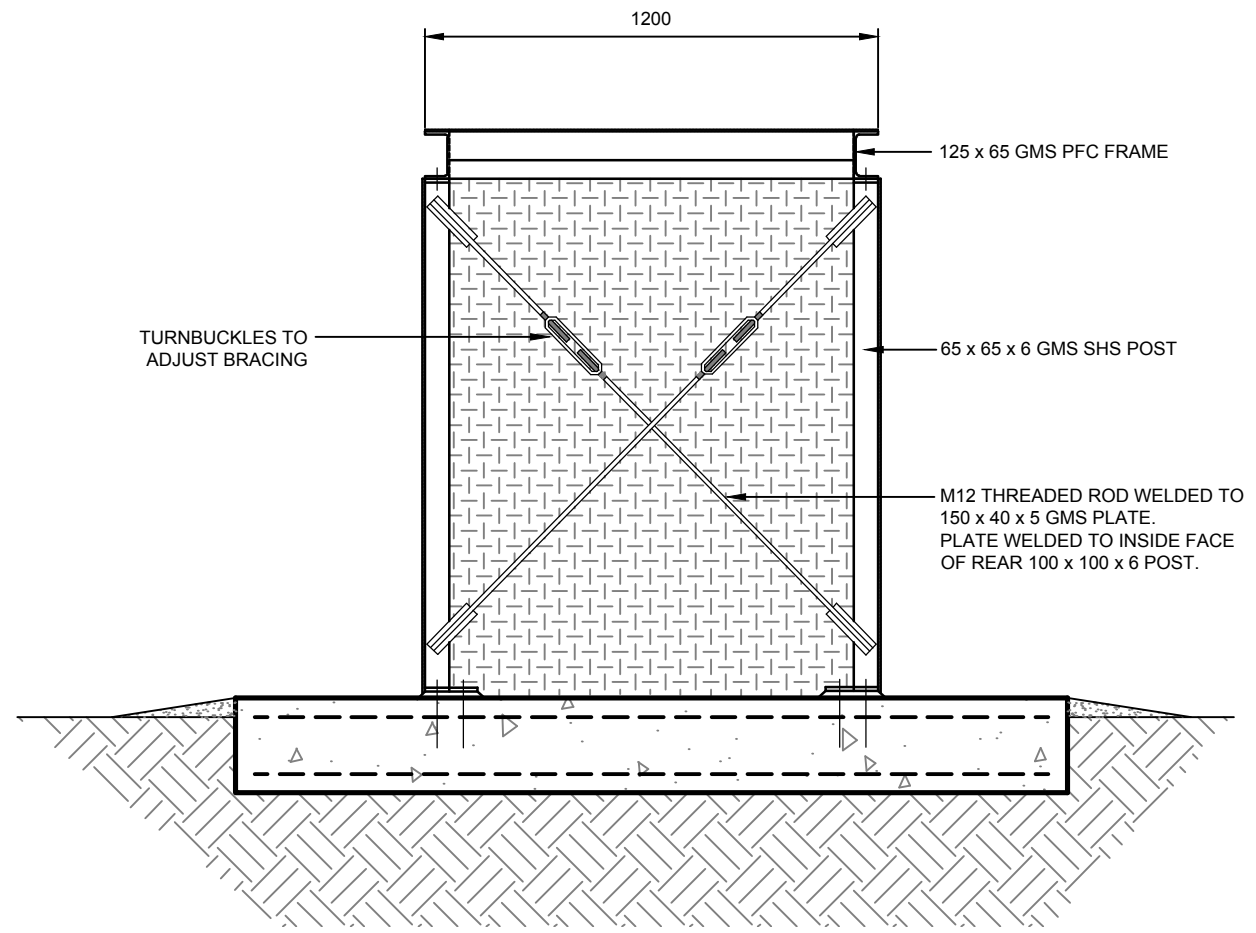


DESIGN UNIT
 COUNCIL OFFICES
 TUMBULGUM ROAD,
 MURWILLUMBAH,
 NEW SOUTH WALES 2484
 PHONE 02 6670 2400
 FAX 02 6672 7513
 WEBSITE www.tweed.nsw.gov.au

DESIGN ENGINEER DATE
DESIGN MANAGER DATE
DRAWN	ENGINEERING & OPERATIONS DESIGN UNIT
SCALE	AS SHOWN

PROJECT:	SEWERAGE WORKS STANDARDS
PLAN TITLE:	FLOODPROOF SEWER PUMP CONTROL CABINET GANTRY DETAILS (SHEET 2 OF 4 SHEETS)

DRAWING NUMBER:	S.D.274-02
	JUNE 2015



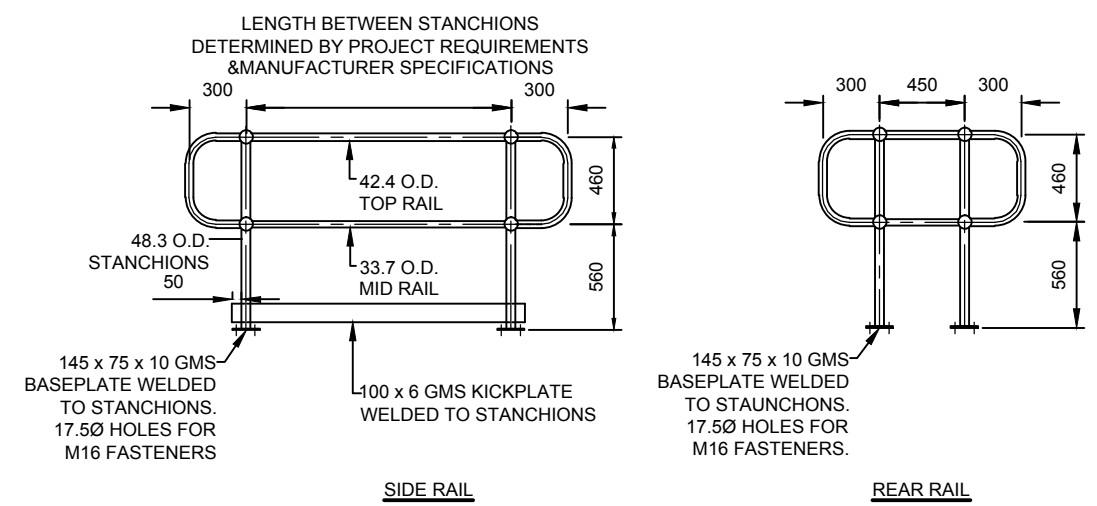
CROSS BRACING DETAILS (IF REQUIRED)

SECTION C
SCALE 1:20 (A3) 01

NOTES:

1. THE HEIGHT OF THE FLOOR OF THE GANTRY AND THE LENGTH OF THE CONCRETE SLAB WILL BE DETERMINED BY THE DIFFERENCE BETWEEN THE 1:100 YEAR FLOOD LEVEL AND THE LEVEL OF THE NATURAL SURFACE AT THE PUMP STATION SITE. THE NUMBER OF STAIRS WILL BE DETERMINED USING A WHOLE NUMBER OF STAIR RISES TO MATCH OR SLIGHTLY EXCEED THE REQUIRED HEIGHT DIFFERENCE.
2. M12 FASTENERS TO AFFIX BASEPLATES TO THE CONCRETE SLAB SHALL BE M12 THREADED GALVANISED OR STAINLESS STEEL BAR OR BOLTS EPOXIED TO A DEPTH OF 150mm.
3. CROSS BRACING (SHOWN IN DETAIL 'A' ABOVE) WILL BE REQUIRED WHERE THE GANTRY FLOOR HEIGHT EXCEEDS 1500mm ABOVE THE SLAB LEVEL AND WHERE THE STAIRS ARE STRAIGHT ON TO THE GANTRY DECK. CROSS BRACING WILL NOT BE REQUIRED IF THE STAIRS ARE AT RIGHT ANGLES TO THE DECK.
4. WHERE UNDERGROUND CONDUITS EXTEND BEYOND THE FOOTING SLAB THEY ARE TO HAVE PROTECTION AS PER COUNTRY ENERGY DRAWING No. CEM7201.13.
5. ALL WELDS TO BE 5mm CONTINUOUS FILLET WELDS.
6. ALL FRAME COMPONENTS TO BE HOT DIP GALVANISED AFTER FABRICATION.
7. 'LOCTITE' SILVER GRADE ANTI-SEIZE, OR EQUIVALENT, TO BE USED ON ALL BOLTS AFFIXING GUARDRAILS TO DECK.
8. IF PLATFORM IS AT RISK OF VEHICLE OR DEBRIS STRIKE DURING FLOODING PLACE PROTECTIVE BOLLARDS BESIDE STRUCTURE. THIS STRUCTURE HAS NOT BEEN DESIGNED TO WITHSTAND VEHICLE OR DEBRIS STRIKE.

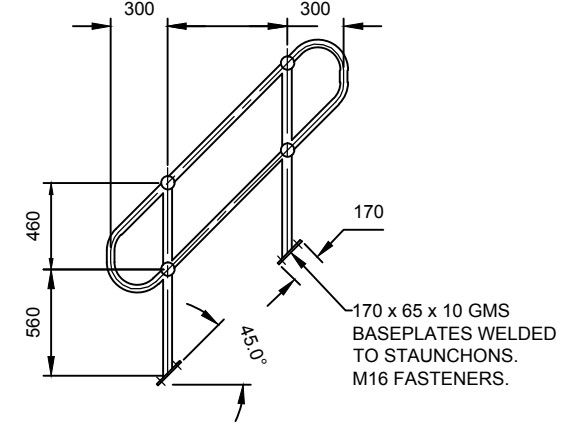
NOTE:
MAXIMUM FLOOR HEIGHT OF
GANTRY TO BE NO MORE THAN
2.6m ABOVE GROUND LEVEL



SIDE RAIL

REAR RAIL

LENGTH BETWEEN STANCHIONS
DETERMINED BY PROJECT REQUIREMENTS
AND MANUFACTURER SPECIFICATIONS

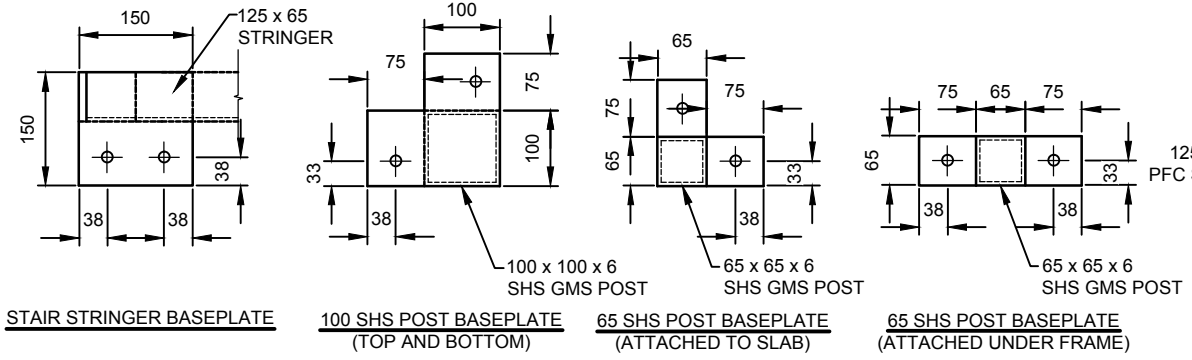


STAIR RAIL

GUARDRAIL DETAILS

SCALE 1:40 (A)

'WEBFORGE' TYPE 1 - TC325 MSG
STAIR TREAD AFFIXED TO ANGLE
WITH TOP CLIP AND
M8 FASTENERS (2 PER SIDE)



BASEPLATE DETAILS
(PLAN VIEWS)

SCALE 1:10 (A3)

NOTES:

1. ALL BASEPLATES 10 THICK GMS WELDED TO STRINGERS AND POSTS.
2. ALL HOLES IN BASEPLATES 140 FOR 120 FASTENERS
3. FASTENERS FOR BASEPLATES ATTACHED TO SLAB TO BE M12 x 150 SS CHEMSET BOLTS.
4. FASTENERS FOR BASEPLATE ATTACHED TO UNDERSIDE OF FRAME TO BE M12 BOLTS.

DETAIL A
SCALE 1:5 (A3) 02

PRELIMINARY
AWAITING APPROVAL



DESIGN UNIT
COUNCIL OFFICES
TUMBULGUM ROAD,
MURWILLUMBAH,
NEW SOUTH WALES 2484
PHONE 02 6670 2400
FAX 02 6672 7513
WEBSITE www.tweed.nsw.gov.au

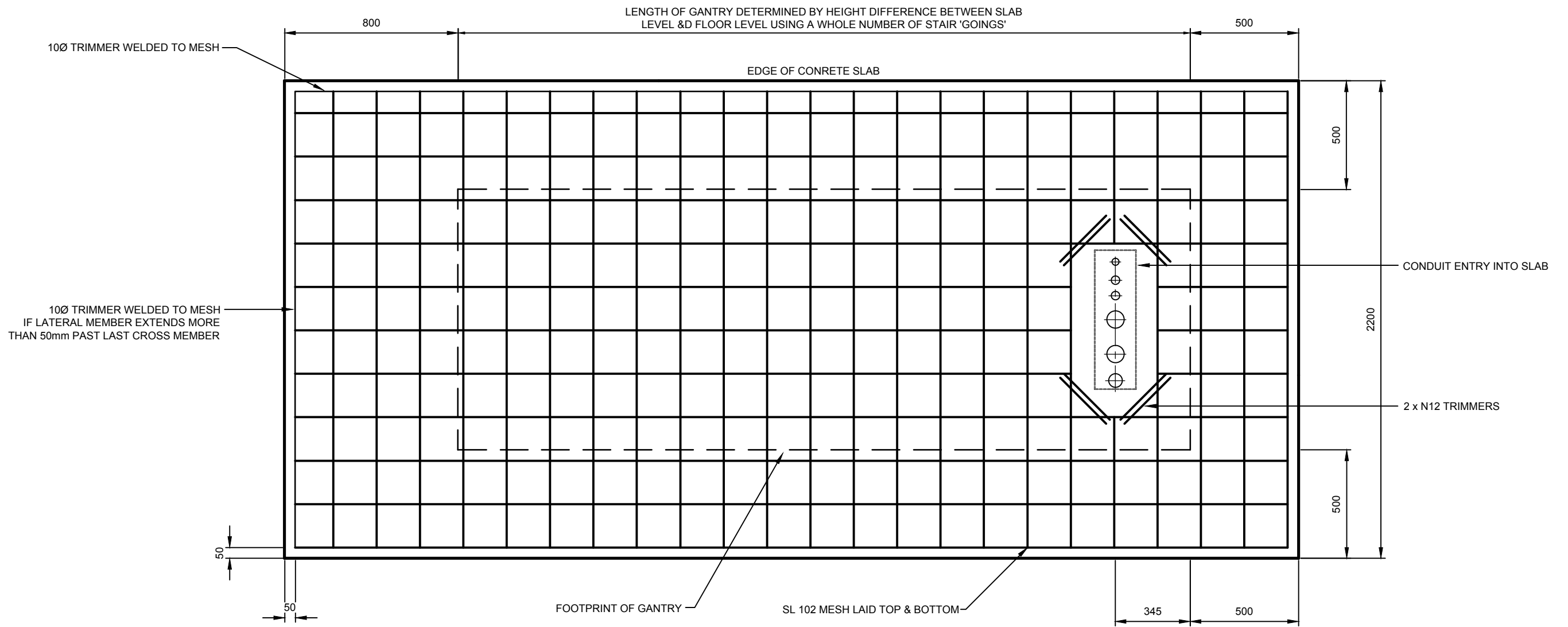
DESIGN ENGINEER DATE
DESIGN MANAGER DATE
DRAWN	ENGINEERING & OPERATIONS DESIGN UNIT
SCALE	AS SHOWN

PROJECT:	SEWERAGE WORKS STANDARDS
PLAN TITLE:	FLOODPROOF SEWER PUMP CONTROL CABINET GANTRY DETAILS (SHEET 3 OF 4 SHEETS)

DRAWING NUMBER:	S.D.274-03
	JUNE 2015



ACAD FILE No: G:_AAA TSC STANDARD DRAWINGS\200 SEWERAGE WORKS\S.D.274 (June-15 Rev B).dwg



PRELIMINARY

B	NOTES AMENDED & PLAN FORM UPGRADED	G.P.C.	06.2015
A	ORIGINAL ISSUE	G.P.C.	03.2008
ISSUE	AMENDMENT DETAILS	INITIALS	DATE

AWAITING APPROVAL



DESIGN UNIT
 COUNCIL OFFICES
 TUMBULGUM ROAD,
 MURWILLUMBAH,
 NEW SOUTH WALES 2484

PHONE 02 6670 2400
 FAX 02 6672 7513
 WEBSITE www.tweed.nsw.gov.au

DESIGN ENGINEER DATE
DESIGN MANAGER DATE
DRAWN	ENGINEERING & OPERATIONS DESIGN UNIT
SCALE	AS SHOWN

PROJECT: **SEWERAGE WORKS STANDARDS**

PLAN TITLE: **FLOODPROOF SEWER PUMP CONTROL CABINET
GANTRY DETAILS (SHEET 4 OF 4 SHEETS)**

ACAD FILE No: G:_AAA TSC STANDARD DRAWINGS\200 SEWERAGE WORKS\S.D.274 (June-15 Rev B).dwg

DRAWING NUMBER: **S.D.274-04**

JUNE 2015

