

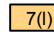


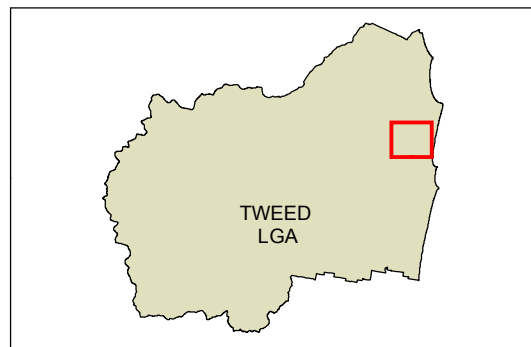
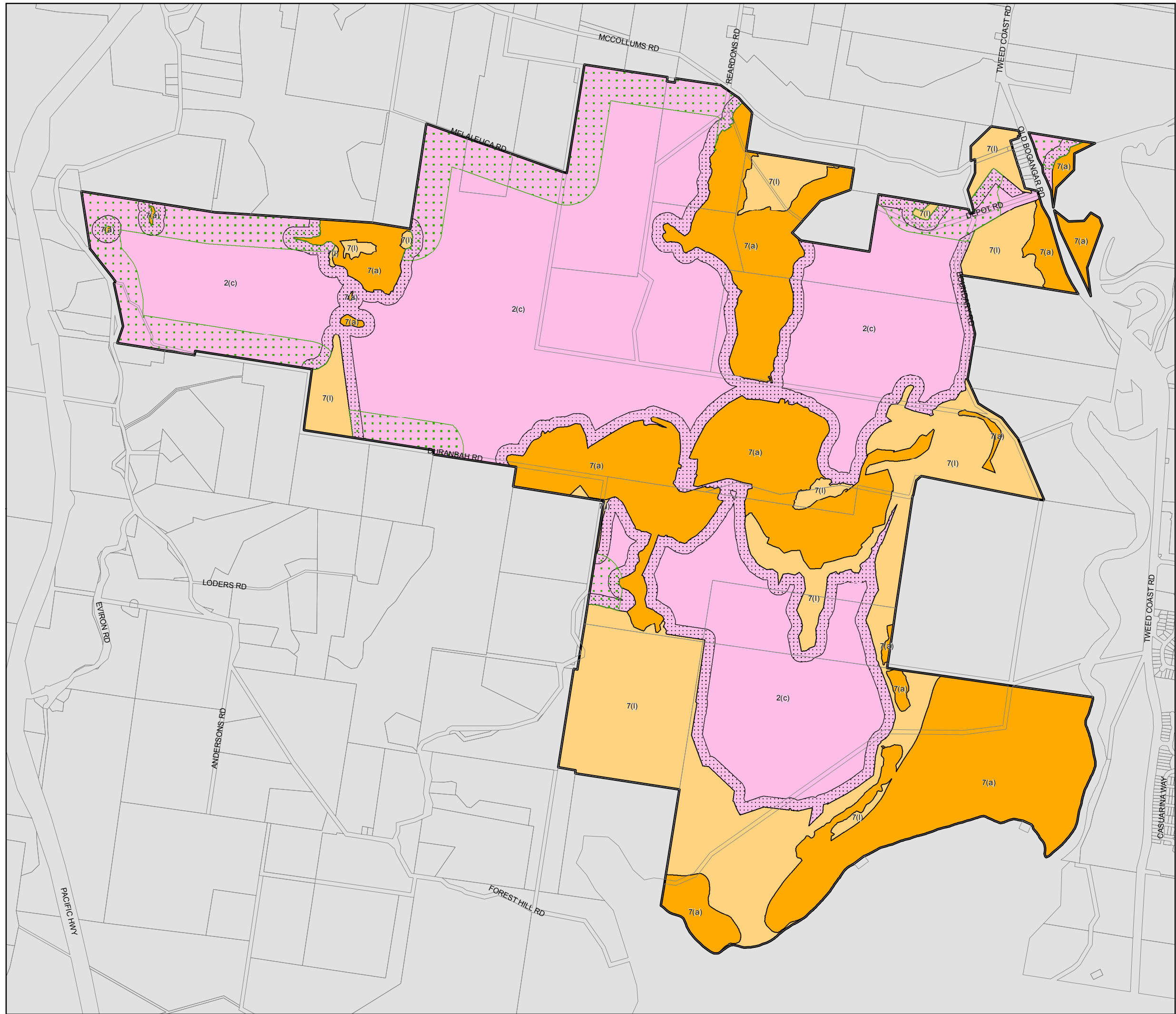




State Environmental Planning Policy (Major Development) 2005  
Kings Forest Land Zoning Map

sheet LZN 001

-  Subject Land
- Zone**
-  2(c) Urban Expansion
-  7(a) Environmental Protection (Wetlands & Littoral Rainforests)
-  7(l) Environmental Protection (Habitat)
-  Agricultural Buffer (150m)
-  Ecological Buffer (50m)
- Cadastre**
-  Cadastre 29/01/2010 © NSW LPMA



Projection: MGA Zone 56  
Datum: GDA94

0 250 500 m

Scale: 1:17,000 @ A3