

*Tweed Shire Council wishes to recognise the generations of the local Aboriginal people of the Bundjalung Nation who have lived in and derived their physical and spiritual needs from the forests, rivers, lakes and streams of this beautiful valley over many thousands of years as the traditional owners and custodians of these lands.*



Indo-Pacific bottlenose dolphins pictured in the Tweed River near Chinderah. Photo: Dolphin Research Australia

## Call to help monitor Tweed dolphin population

Local charity Dolphin Research Australia is calling on the Tweed community to help monitor the dolphin population of the region.

Founding Director of Dolphin Research Australia Dr Elizabeth Hawkins said her organisation was asking Tweed residents to become Dolphin Watch citizen scientists and report sightings to help monitor local populations.

Since 2018, Dolphin Research Australia, in partnership with Tweed Shire Council, has been monitoring dolphins through monthly surveys that cover the Tweed River estuary.

"We are particularly interested in the dolphins that use the estuary on a regular basis as these individuals represent some of the most vulnerable in our coastal population," Dr Hawkins said.

"The research has revealed that the Tweed River is an important feeding habitat for a small resident community, primarily consisting of mothers and calves.

"Over the past few months, we have seen fewer dolphins on our surveys in the river compared to previous years and we are not sure why. With the help of the community, we can try to solve this mystery."

Learn how you can become a Dolphin Watch citizen scientist and report dolphin sightings through Dolphin Research Australia's website at [www.dolphinresearchaustralia.org](http://www.dolphinresearchaustralia.org)



A male Indo-Pacific bottle nose dolphin named 'Herbie' near the entrance to Terranora Creek. Photo: Dolphin Research Australia

## Can you grow any of our community markets?

Tweed Shire Council is seeking expressions of interest from individuals or groups to run one or more of Tweed's seven community markets from 1 November 2020 to 31 October 2023.

Expressions must address specific issues for the provision of food for sale, stall types, waste avoidance/sustainability and enhancing community and cultural experiences.

"This is an exciting time for the Tweed's community markets as we



Could you develop any of Tweed's community markets? Photo: Ryan Fowler Photography

want them to grow and become cultural and community experiences which are sustainable in terms of waste," Council's Manager Building and Environmental Health Denise Galle said.

"Our current markets are fantastic and Council would like to grow these markets to provide more opportunities for local goods, services, arts, crafts and organic products, as well as entertainment, such as musicians, buskers and artists."

Tweed markets are held at Kingscliff Beach, Kingscliff – Salt, Tweed Heads, Pottsville and Murwillumbah.

Applicants are advised to read the *Market Management Plan Guidelines 2020* and the *Markets Policy 2020* before beginning their expression of interest at [www.tweed.nsw.gov.au/markets](http://www.tweed.nsw.gov.au/markets)

The policy sets out the location, frequency and operating times of the individual markets and the terms of the development consent for each location. The guidelines include the 'Market Management Plan Assessment Matrix', which documents the assessment criteria and weightings and contains a checklist of all the relevant information an expression needs to address.

"The expression of interest is a comprehensive submission process and to be successful applicants need to fully understand the requirements of the market management we seek," Ms Galle said.

Expressions of interest close at 4pm, Wednesday 26 August 2020.

To assist applicants to understand the requirements and assessment process, Council staff will be available for appointments on Wednesdays from 9am to 12 noon. To book an appointment or for more information, contact Council's Environmental Health Section by calling 02 6670 2400 or emailing [tsc@tweed.nsw.gov.au](mailto:tsc@tweed.nsw.gov.au)

Visit [www.tweed.nsw.gov.au/tenders/current](http://www.tweed.nsw.gov.au/tenders/current) to register your expression of interest.

For more information visit [www.tweed.nsw.gov.au/markets](http://www.tweed.nsw.gov.au/markets) and [www.tweed.nsw.gov.au/feesandcharges](http://www.tweed.nsw.gov.au/feesandcharges)



Last week we each used

**170L a day**

as at 7 August 2020

## Tweed continues to grow

The population of the Tweed has topped 97,000, according to the latest Australian Bureau of Statistics (ABS) update.

The ABS recently released its annual update on local populations and regional population growth.

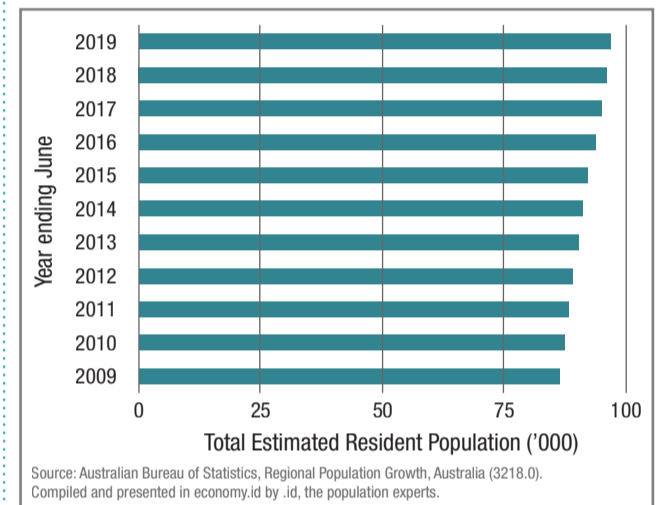
Figures showed the Tweed Shire Estimated Resident Population for 2019 was 97,001, with a population density of 0.74 people per hectare.

The population grew by 1.02 per cent on the previous year's figures and is expected to hit 100,000 in the next few years and reach 132,221 by 2041.

The Tweed has grown faster than the Regional NSW average population growth of 0.82 per cent.

You can view a range of statistics for the Tweed and smaller areas by visiting the Tweed Shire Community Profile at [profile.id.com.au/tweed](http://profile.id.com.au/tweed)

For more information about the demographic resources available or assistance in moving your business to the Tweed or expanding in the Tweed Shire, contact Council's Land and Economic Development team on 02 6670 2165, email [business@tweed.nsw.gov.au](mailto:business@tweed.nsw.gov.au) or go to [business.thetweed.com.au](http://business.thetweed.com.au)



Estimated Resident Population (ERP), Tweed Shire 2009 – 2019.

## Join our BlueJeans jam for sing-a-long fun

Get set to hit the high notes through an innovative approach to communal singing, thanks to Tweed Shire Council's Community Services team.

Council had to cancel its Friday afternoon 'Singing For Fun' event at the Banora Point Community Centre due to the COVID-19 pandemic. But rather than let go of the event that brings people together through music, 'Singing For Fun' has been taken online, allowing anyone from across the Tweed to join in, put their vocal talents to the test and meet people at the same time.

To sign on for singing, call Community Services on 07 5569 3110 or email [communityservices@tweed.nsw.gov.au](mailto:communityservices@tweed.nsw.gov.au). Then, at the start of the week, you will be sent the words to six songs and login details for Council's BlueJeans jam. Join the jam on the BlueJeans portal on Thursday at 10am and sing-a-long for half an hour.

The sessions are led by music therapist Shannon Rees. Don't worry if you can't carry a note, you can sing as loud as you like as all participants are muted and the only sound heard is Shannon on guitar.

In between songs, there's an opportunity to chat and meet your fellow singers.

Each session generally features a theme so there's an opportunity to learn new songs each week.

Anyone who finds signing on a little tricky can call Community Services for help over the phone.



Tweed Shire Council Community Services Project Support Officer and 'Singing For Fun' moderator Lyn Porter makes a connection with participants.





Healthy flows in the Tweed River at Bray Park Weir.

# Wet July boosts Tweed's river flows

**A wet July has possibly saved the Tweed from facing water restrictions later this year.**

While the rain of April and May was well below average, June and July have brought relief.

April was the second driest April on record for almost 50 years, with just 16.5mm of rain against an average 150.6mm. Only 1997 was drier with just 14.2mm.

In May, we received less than half our average falls at Bray Park with 48.8mm against an average of 127mm.

But in June we were right on point with 102.8mm against the average of 105.5mm and last month we were well above average with 155.8mm against an average of 62mm.

"We are in a significantly better position than we were this time last year," Manager Water and Wastewater – Business and Assets Anthony Burnham said.

"But we need to remember our traditional driest months are July to September."

This time last year the Tweed River was flowing at 45 million litres a day at Uki and rapidly declining. This year, the flow is at 139 million litres a day and slowly declining.

In the seven months to the end of July this year we have received 1407.4mm at Bray Park. Over the full 12 months last year, we received just 716.7mm, making 2019 the driest year on record. On average, the Tweed receives 1571mm of rain a year.

"As water managers in the Tweed we battle against the perception that the Tweed is immune from drought and water restrictions. But that is not the case.

"We have a limited supply of water and at all times ask everyone to not waste this resource.

"Even though we have just had good falls of rain in July, the average Tweed resident is still using between 170 and 180 litres of water a day – 10 to 20 litres more than our daily consumption target.

"We urge all residents to make it a daily habit to use water wisely," Mr Burnham said.

## Circular Cafés keep food out of landfill

**Tweed Shire Council is calling on any café that wants to be a force for good to sign up to Circular Cafés.**

Circular Cafés, a project run by North East Waste in partnership with Council, is working to divert 726 tonnes of food waste from landfill over the next 12 months.

"Now that's good marketing for your business," Council Resource Recovery Education Officer Tarra Martel said.

"Circular Cafés is here in the Tweed and will work with café operators to help them and their customers create less waste, shape stronger supply chains and build better communities."

The help will come through such things as getting a free green bin service for one year (food and organics 240-litre wheelie bin), eliminating the use of single-use plastics and information on cup-

swap programs, food donation, bioplastics and where to get the best packaging to save money.

Member businesses will benefit from one-on-one support and additional promotions around having great environmental credentials.

Businesses that participated in the 2019 Bintrim program can join Circular Cafés but are not eligible for the free green bin service.

Circular Cafés is a NSW Environment Protection Authority Waste Less, Recycle More initiative funded from the waste levy.

To join the movement, visit [www.circularcafes.com.au](http://www.circularcafes.com.au) or contact [kim@newwaste.org.au](mailto:kim@newwaste.org.au) for more information.

**Right: The Circular Cafés project aims to divert 726 tonnes of food waste from landfill per annum.**



## Learn-to-repair workshops to keep items going

**The Tweed community is being encouraged to become part of the circular economy by repairing broken items to keep them in use for as long as possible.**



Online workshops will teach you how to keep your bike on the road.

### Development Application determinations

Notification of Development Application Determinations for the purposes of Section 4.59 of the *Environmental Planning and Assessment Act 1979* (as amended).

#### Application details

##### Approved

**DA19/0803** – Organic waste management facility (NRPP)  
Lot 1 DP 590220, Lot 5 DP 221825, No. 298 Bartletts Road, **Eviron**

**DA20/0277** – Alterations (construction of deck) and use as community facility (water safety observation point) and take away food and drink premises  
Lot 2 DP 1122062, Marine Parade, **Kingscliff**

**DA19/0601** – Change of use to tourist and visitor accommodation  
Lot 25 DP 233276, No. 7 Endeavour Parade, **Tweed Heads**

**CDC20/0067** – Internal screens and doors  
Lot 1 DP 777183, No. 2 Wharf Street, **Tweed Heads**

The above development determinations are available for public inspection free of charge at the Planning and Regulation Division, Murwillumbah Civic Centre, during ordinary office hours or viewed on Council's DA Tracking site located at [datracker.tweed.nsw.gov.au](http://datracker.tweed.nsw.gov.au)

### Current vacancies

View current vacancies at [www.tweed.nsw.gov.au/careers](http://www.tweed.nsw.gov.au/careers)

Subscribe to receive Job Vacancy Alerts via email at [www.tweed.nsw.gov.au/subscribe](http://www.tweed.nsw.gov.au/subscribe)

**WATER WEEK 7** Check when your water meter is read at [www.tweed.nsw.gov.au/meterreading](http://www.tweed.nsw.gov.au/meterreading)

By learning how to repair and reuse items and not place them in landfill, Tweed residents can help build a better community.

On Saturday (15 August), you can learn from Bower Reuse and Repair Café experts how to repair your bike and keep it on the road by joining an online interactive maintenance and repair workshop.

The free workshop will teach the basics around brakes, gears and tyre checks and how to fix a tyre puncture. To register, go to [bike\\_repairs\\_cafe.eventbrite.com.au](http://bike_repairs_cafe.eventbrite.com.au)

Then, on Saturday 29 August, they'll be teaching the basics of electronics repairs and maintenance to keep those kitchen appliances, lamps and switches working.

This workshop will allow you to ask the experts questions and you can register at [electronics\\_repair\\_cafe.eventbrite.com.au](http://electronics_repair_cafe.eventbrite.com.au)

The next workshop on Saturday 12 September will teach you the basics of how to repair clothing.

You'll get guidance on how to fix a dodgy zipper, torn fabric, sew on a button and mend holes. You'll also learn what tools you need for a good sewing kit and how to maintain them.

To register, go to [clothing\\_repair\\_cafe.eventbrite.com.au](http://clothing_repair_cafe.eventbrite.com.au)  
All workshops run from 9.30 to 10.30am.

These workshops, supported by North East Waste, will help 'keep things coming around', which aligns to Tweed Shire Council's goal of towards zero waste.



Learn how to repair old clothes and avoid sending them to landfill.

### Request for offer

**RF02020038 Expression of Interest for Conducting Community Markets**

**Offers close:** Wednesday 12 noon 26 August 2020

Offers must be lodged as specified in the offer documentation.

Request For Offer documentation is available at no charge from Council's website at [www.tweed.nsw.gov.au/tenders](http://www.tweed.nsw.gov.au/tenders).

All Offers will be opened at closing time and will be considered by Council in accordance with the provisions of the *Local Government Act 1993* and the *NSW Local Government (General) Regulation 2005*. The lowest or any offer is not necessarily accepted and canvassing of Councillors or staff will disqualify.

For further information please contact Contracts Administration on 02 6670 2606.

## Upgraded auditorium open for community use

**If you are looking for a venue to host a function during the challenging COVID-19 pandemic, Tweed Shire Council may have the answer with the recently upgraded auditorium at the Tweed Heads Civic and Cultural Centre.**

Featuring state-of-the-art sound and lighting equipment, modern facilities and COVID-19 safe protocols, Council would like to let the community know the facility is open for business.

The auditorium has undergone a \$200,000 makeover as part of the \$1.2 million refurbishment of the civic centre completed in March.

Council Coordinator Community Services Joanne Watters said the venue is available for hire and capable of hosting a range of different events in keeping with COVID-19 restrictions.

"Normally capable of seating up to 500 people, social distancing requirements due to COVID-19 have seen the maximum number of people reduced to 91 in the main auditorium," Ms Watters said.

"Bookings have been taken for events ranging from club meetings through to dance eisteddfods.

"Our booking rates make this a very cost-effective venue, especially for community groups looking for somewhere to hold a meeting.

"It is one way that Council is giving back to the community and encouraging the use of such a versatile facility.

"There is disabled access, plenty of parking, air conditioning and full facilities such as a cold room and kitchen for functions.

"Our COVIDSafe Plan is in place and we are following strict COVID-19 protocols including hand sanitising stations and separate entrance and exit doors to provide safe pedestrian traffic flows," she said.

With upgrades being carried out at the Murwillumbah Civic Centre, the Tweed auditorium is being offered by Council as an alternative venue until the work in Murwillumbah is completed.

The Tweed Heads Civic Centre also has several smaller meeting rooms available for use by the public.

Visit [www.tweed.nsw.gov.au/communitybuildings](http://www.tweed.nsw.gov.au/communitybuildings) for further information or call Community Services on 07 5569 3110.



**The newly refurbished Tweed auditorium at the Tweed Heads Civic and Cultural Centre.**

02 6670 2400 or 1300 292 872

@ tsc@tweed.nsw.gov.au

Subscribe to the Tweed Link online at [www.tweed.nsw.gov.au/subscribe](http://www.tweed.nsw.gov.au/subscribe)

PO Box 816, Murwillumbah NSW 2484

www.tweed.nsw.gov.au

or follow Council on: [f](https://www.facebook.com/tweedshire) [i](https://www.instagram.com/tweedshire) [y](https://www.youtube.com/tweedshire) [in](https://www.linkedin.com/company/tweedshire)



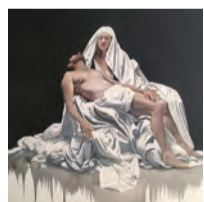




## Gallery DownTown is the annexe of one of the State's most recognised regional galleries, Tweed Regional Gallery & Margaret Olley Art Centre.

An initiative of Tweed Shire Council, and housed within the creative hub of Murwillumbah's vibrant M|Arts Precinct, Gallery DownTown features artworks from the Gallery's collection of Australian art, complemented by exhibitions devoted to showing the work of regional artists.

### CURRENT EXHIBITIONS



#### Interplay: Profiling the four collection areas

Featuring works by Australian artists including those local to the region across four themes including portraits, artists' prints, ceramics and photography.  
Angus McDonald *Pieta* 2016



#### Gauge

Rae Saheli  
9 July – 5 September 2020

Rae Saheli  
*Layered* 2019  
12 gauge shot fired at encaustic on board, 30 x 30cm  
Image courtesy of artist



#### Fragmented Cohesion

Annie Long  
9 July – 5 September 2020

Annie Long  
*Antarctic Beeches* 2019  
stoneware with glaze, enamel and lustre, 48 x 50 x 40cm  
Image courtesy of artist



**GALLERY  
DOWNTOWN**

ANNEXE OF THE TWEED REGIONAL GALLERY

Free admission  
Located within the M | Arts Precinct  
1 Brisbane St, Murwillumbah, NSW

Monday – Friday 10am – 3pm  
Saturday 10am – 2pm  
P. 0426 230 193



Tweed Regional Gallery & Margaret Olley Art Centre and Gallery DownTown are supported by the NSW Government through Create NSW