

## Watch the Kingscliff Foreshore site transform

**Significant work has already been undertaken with initial piling, rock placement and changes to beach access.**

Time-lapse cameras have been installed at each end of the site to provide regular images as the project progresses. Selected photos from each camera will be uploaded regularly to [www.yoursaytweed.com.au/KingscliffForeshore](http://www.yoursaytweed.com.au/KingscliffForeshore)

Over the last three weeks, contractors completed the initial piling for the first stages of the concrete viewing platform and stairs. Rock placement has now commenced on the southern section of the rock wall. Over the month ahead this work will continue into the northern section.

Beach access stairs next to the bowling club have been removed to allow for the piling of the new stairs to commence ahead of schedule. Temporary signage has been installed to direct access to the beach via the existing stairs north of the bowling club, where a temporary shower has also been installed.



Piling works on the southern end of the site.

In addition to the cameras, two viewing locations have been established on the Marine Parade boundary of the site, allowing people to safely see into the site and watch how the revitalisation is taking shape.

Council will be operating a Kingscliff Foreshore Revitalisation onsite office from the end of April, using the former Kingscliff Beach Holiday Parks booking office next to the Community Hall.

Project Manager Stewart Brawley will be based at the office at different times each week, throughout the project, and will be available for face-to-face enquiries.

Dates and times he will be at the office will be advertised at [www.yoursaytweed.com.au/KingscliffForeshore](http://www.yoursaytweed.com.au/KingscliffForeshore) and in the Tweed Link.

Project information and updates will also be displayed on the outside of the information office building.



Laying the initial rock bed at the northern end of the site.

## Changes in July to emergency services funding

**During the 2017 floods, the importance of emergency services was clear to see with Fire and Rescue NSW, the NSW Rural Fire Service and the NSW State Emergency Service personnel providing critical assistance for thousands of Tweed residents.**

The process of funding these vital services is set for a significant change.

From Saturday 1 July 2017, the NSW Government will abolish the Emergency Services Levy (ESL) on insurance policies and replace it with a Fire and Emergency Services Levy (FESL) to be paid alongside Council rates.

The reform is not a response to recent flood events and has been under review since the start of the year.

The changes will mean the burden of funding emergency services will no longer fall only on those with property insurance, but on all landowners.

This levy will appear on Tweed Shire Council property owner rates notices as a separate item.

Please note the FESL is a State Government charge, not a Council increase in rates. The State Government has directed councils across NSW to collect the levy which Council will forward on to the State Government.

The revenue raised from FESL will be directed by the State Government to the NSW State Emergency Service, NSW Rural Fire Service and NSW Fire and Rescue.

You will be notified of your FESL contribution as part of your Council rates

notice, or on a separate notice for non-rateable properties. Like Council rates, you may pay the FESL annually or quarterly.

The FESL paid will, in part, depend on your property's classification as residential, farmland, industrial, commercial or public benefit, and whether or not the land is vacant.

Council is writing to all property owners to advise of their classification and FESL information has also been distributed in recent land valuation letters from the Valuer-General.

Further details about the FESL are available at [fesl.nsw.gov.au](http://fesl.nsw.gov.au) or by phoning the FESL information line on 1300 787 872.

If you disagree with your property's classification, you can request a review by completing this form: [www.tweed.nsw.gov.au/FESLClassificationReview](http://www.tweed.nsw.gov.au/FESLClassificationReview)

Alternatively, for more information you can visit the Emergency Services Levy Insurance Monitor (<http://www.eslinsurancemonitor.nsw.gov.au/>) website or alternatively you can phone on 1300 607 723.



A fairer levy for us all.

Fire & Emergency  
Services Levy



# Flood recovery updates

## Recovery Centre

**More than 1000 people have registered at the Recovery Centre since it was established in Murwillumbah.**

Council's message to the community and the various social media community group pages and administrators is that if you know of someone in need – businesses or individuals – please encourage them to make contact with the Recovery Centre as soon as possible – they can't assist or connect those in need to the right services if they don't know about it.

Visit the Recovery Centre, Murwillumbah Community Centre in Nullum Street or call them on (02) 6670 2133.

The Recovery Centre and state agencies will be here until demand indicates they are no longer needed. These centre opening hours and days will be reviewed based on need. Operating hours for April are:

Tuesday 25	<b>Closed</b>
Wednesday 26	9am–5pm
Thursday 27	9am–5pm
Friday 28	9am–5pm
Saturday 29	10am–4pm
Sunday 30	<b>Closed</b>

For more information visit <https://www.emergency.nsw.gov.au/for-the-community/severe-weather-north-east-nsw.html>

## Water bills

**Flood-affected residents concerned about a spike in their water bill following the flood clean-up are advised to wait until their bill arrives before seeking assistance.**

In past floods, residential water bills have been largely unaffected by flood clean-up tasks. Following the floods of January 2008 in Tumbulgun, Council investigated the effect of flood clean-up on residential water bills and found only one in eight properties used more water than normal and that the excess use equated to 5000 litres and cost approximately \$6.

An investigation was also carried out after the January 2013 flood with similar results. Council expects the same to hold true for the 1000 residential properties (approximately) across the shire affected by the 1 April flood. But, if the bill does reflect a spike in use, please contact Council on (02) 6670 2400. The first post-flood accounts are in the mail.

## Roads

**Council has identified 1200 works items across the shire's road network that need to be repaired or remediated following the flood of 1 April. The estimated damages bill to date is approaching \$20 million.**

Council is on track to have a temporary one-lane timber bridge across Byrrill Creek by mid May to replace the bridge washed away until a permanent bridge can be designed, funded and constructed.

Last week Council crews and contractors were working on priority landslips and washouts on roads including: Tyalgum Creek, Lone Pine, Rowlands Creek, Hopkins Creek, Urliup, Numinbah, Glencoe, Nobbys Creek and Kyogle roads and Tweed Valley Way.

By the end of the week they were expected to also have started work on bypassing the missing section of Manns Road; fixing the scours and table drains of Commissioners Creek Road; removing large tree debris from Byrrill Creek and Upper Burringbar roads to allow the rubbish truck access; removing silt from Tweed Valley Way and Kyogle Road; and, unblocking a causeway on Urliup Road.

Council is working to schedule a restart to the Blackspot Programme of realigning a section of Clothiers Creek Road and picking up the work it had started on Moolau Avenue, Tweed Heads, prior to the flood.

## Flood event debrief/review

**Council is still working its way through the recovery phase of the recent floods and is yet to have a full debrief with all agencies and internal Council departments.**

In time we will have a full debrief, however, right now our immediate focus continues to be on emergency restorations. There are always lessons from floods – be they large or small, that we can take and apply to enable us to respond better to future events.

## Flood mitigation/future planning

**The recent event has reaffirmed the importance of the Flood Plain Risk Management Study and Plan, recently reported to Council and highlights the issues that the community has had to deal with over the past two weeks.**

This event caught everyone by surprise, the amount of rain – 600 to 750mm that fell within 24–48 hours, well beyond what was forecast – and the height and rate of river rise was unprecedented in the recorded history of the Tweed.

At this early stage Council knows that the Flood Plain Risk Management Study reported and adopted by Council in 2014, proved to be an accurate assessment of the flood risks and modelling.

Some of the options that will be on the table for future discussions include seeking funding assistance from higher levels of government to implement the adopted strategies from the Flood Plain Risk Management Study and Plan.

The Plan, available at [www.tweed.nsw.gov.au/Flooding](http://www.tweed.nsw.gov.au/Flooding) discusses strategies such as community education, additional warning systems, reviews of town planning controls, flood mitigation works and voluntary purchase schemes to help reduce flood impacts on for the community.

Council reminds the community that there are a range of measures that can be considered and implemented to mitigate flood-risk – but no one can prevent a flood.

These measures are long term and require commitments from all tiers of government, consultation with the community and buy-in for them to succeed.

## Homelessness

**Council acknowledges the enormous personal, physical and emotional toll of the recent floods and the impact they have had on the lives of so many Tweed families, especially those who were already vulnerable with respect to housing.**

While Council takes an active role wherever possible, homelessness and the provision of services are the primary responsibility of the State Government and we are working closely with them to identify and refer details of people impacted by the recent flood.

Council has taken significant measures to support community members displaced during and after the flood event, most significantly funding staff resources at the Flood Recovery Centre, including the Centre Manager, which is the key point of contact for people seeking accommodation.

Council has also taken practical steps to help displaced people, such as providing use of the Art Gallery and facilities for those residents of the Greenhills Caravan Park and opening aquatic centre bathrooms and showers free to the public.

Council's Environmental Health staff also visited many of the affected caravan parks since the floods to declare them safe to occupy as soon as possible.

We estimate 100 people have been displaced by the flood over and above the hundreds of people we knew already were homeless and at risk of being homeless across the Tweed.

## Clothiers Creek Road landslip

**Temporary traffic lights have been placed on a section of Clothiers Creek Road reduced to one lane by a landslip in the 1 April flood.**

The section, between Farrants Road and Norths Lane, also has been placed under a 4.5-tonne vehicle weight limit after a geotechnical assessment indicated that heavy vehicle usage through the slip area should be limited to essential services. School buses and garbage trucks will be exempt from the weight limit.

Council will install more signage on the section over coming weeks to further advise of the weight limit.

Heavy vehicle operators are advised to use alternate routes between Bogangar and Nunderi, avoiding Clothiers Creek Road.

The temporary traffic lights will remain in place until rehabilitation works on the section can be undertaken. While these works will be prioritised, as yet no start date has been set.



# Flying-fox camp management plan consultation underway

Council has commenced preparation of a management plan for the sixteen active flying-fox camps in the Shire and is seeking input from interested members of the community.

Council's Senior Program Leader – Biodiversity, Scott Hetherington said "The intent of the consultation is to listen to people who have information about flying-fox camps. This will mean that we are best placed to develop management strategies for camps throughout the Shire".

As flying-foxes are known to establish camps in close proximity to urban areas, the plan will identify management strategies to reduce impacts from the camps on residents, whilst ensuring that flying-foxes and their habitat are conserved.

"Flying-foxes are unique animals and play a critical role in the health of forests in the Tweed. As nocturnal foragers that can cover 30km a night, they are essential for the pollination and health of native forests," Mr Hetherington said.

The NSW State Government has provided financial support for preparation of the plan through the Flying-foxes Grants Program. Ecological consultants, Ecosure have been appointed to prepare the plan and have extensive experience in the development of management plans, including flying-foxes, for local governments throughout the east coast of Australia.

Anyone wishing to provide input to the plan can make an appointment with Ecosure for one of the sessions detailed below. Appointments are 45 minutes and bookings can be made by contacting Ecosure at (07) 5508 2046 or clicking on the links below. Bookings are essential.

Monday 8 May 2017, Kingscliff Community Hall from 2pm. [tweedflyingfoxplan.eventsart.com/events/kingscliff/](http://tweedflyingfoxplan.eventsart.com/events/kingscliff/)

Wednesday 10 May 2017, Uki Hall from 2pm. [tweedflyingfoxplan.eventsart.com/events/uki/](http://tweedflyingfoxplan.eventsart.com/events/uki/)

Image courtesy of Bruce Thomson



# Delivery Program sets out four-year plans for Council



Council has voted unanimously to adopt the latest key planning document for the Tweed which sets out upcoming Council projects and activities.

The *Draft Delivery Program 2017-2021* outlines how Council will work over the next four years to achieve the long-term community goals set out in the *Community Strategic Plan 2017-2027*, which was developed with extensive input from the community and adopted by Council earlier this month.

Supporting the Delivery Program is the annual Operational Plan, which details the individual projects and activities that will be undertaken each year.

"A huge amount of work and community input has contributed to these documents, which are really important to guide the work of Council," Council's Director Corporate Services Liz Collyer said.

"When the public exhibition period starts, I really encourage community members to provide feedback on these plans and continue the conversations with Council about our shared long-term visions for the Tweed."

The *Draft Delivery Program 2017-2021* and *Draft Operational Plan 2017-2018* will be placed on public exhibition from 26 April to 26 May 2017 with access to all documents via printed copies at various Council locations or from the Tweed Shire Council internet site and [www.YourSayTweed/ttfio](http://www.YourSayTweed/ttfio)

## 3 Bin System Roadshow – your next opportunity to find out more

The 3 Bin System Roadshow is visiting the following locations over the coming two weeks.

If you live in a house or duplex in an urban area and have any questions relating to the changes in your service from 1 July, please come along and have a chat with one of our expert staff.

- Wednesday 26 April, 7 to 11am – Caldera Farmers Market, Murwillumbah Showground
- Saturday 29 April, 9am to 3.30pm – Cudgen Leagues Club ground
- Sunday 7 May, 8am to 12pm – Pottsville Beach Market



## Flood recovery facts and figures

The Council tip has taken 13,000 tonnes of flood affected items and debris (and still increasing) from across the Tweed. To put this in perspective – Council usually collects 1500 tonnes in one of the household clean-ups – we have taken nearly nine times more to landfill.

In the week following the flood, our Contact Centre staff took more than 2300 calls that is, one call every minute our phone lines were open, and that doesn't even include front-counter enquiries.

We usually get 30,000 visits to our website in a month. We received this in just one week during the flood emergency.

Our building inspection team offered free structural home inspections, with more than 20 homeowners taking up the offer. Council lost 35 trucks and heavy plant and 27 passenger vehicles from our fleet.

## Mayor Appeal Fund



# \$150,000

(As at 21 April)

One hundred percent of funds will be distributed; there are no administration fees associated with the appeal. All donations are tax deductible. To donate, visit <http://www.tweed.nsw.gov.au/MayorAppealFund>

# Living with ability – sharing inspiring stories

A new major exhibition at the Tweed Museum will share the moving and inspiring personal stories of eleven 'ordinary' people whose rich life experiences include living with disability.

The exhibition, *Untold Stories: living with ability*, is part of a larger project being undertaken by Tweed Regional Museum called Contemporary Voices, which captures diverse stories of people living in the Tweed.

Participants in Untold Stories have generously allowed the Museum to record and share their stories through audio, video and text, complimented by objects emblematic of their personal journeys.

The exhibition opened at the Tweed Regional Museum at Murwillumbah in late March and continues until 24 June.

"It is no small thing to allow large parts of your life story to be recorded and used as the basis for a public exhibition," Museum Director Judy Kean said.

"To do so in the community in which you live, so others can have a 'window' of understanding into experiences and issues they would otherwise be unaware of is especially generous."

Tracy Barrell, Una Cowdroy, Jan Cronly, Suzy Hudson, Bev Larsson, Ally Page, Nicole Randolph, Tim Thomas, Anne-Gabrielle Thompson and Bill and Yvonne Trenear have each participated in an 18 month project which documents many aspects of their lives, including individual experiences of living with disability.

"One of the most striking aspects of the project for me, has been that while each person's experience of disability is significant and sometimes life changing, it's just one part of much bigger richer stories characterised by survival, adventure, academic and sporting achievement, love, advocacy, spirituality, generosity, tenacity, and much more," Judy Kean said.

"The exhibition is inspiring and moving for many different reasons, and offers visitors different ways of appreciating these stories."

Museum staff worked with Karen Collins, Council's Community Development Officer, Aging and Disability and with members of Council's

Equal Access committee, and project participants on the project.

A program of activities during the exhibition includes: verbal imaging tours of the Untold Stories exhibition and the Museum for those with vision impairment; interactive story telling sessions for children by Bev Larsson in May and June, based on Bev's book *Along Came Henry*; AUSLAN interpreted tours on Saturday 20 May, and more.

The Museum will host the launch of the 2017 Access and Inclusion Awards in May.

*Untold Stories: living with ability* is supported by the New South Wales Government through Arts NSW.

For more details about the exhibition and program of activities contact the Museum on (02) 66702493 or visit the website [museum.tweed.nsw.gov.au](http://museum.tweed.nsw.gov.au). The Tweed Regional Museum at Murwillumbah is open Tues to Sat 10am – 4pm, entry is free.



## COMMUNITY NOTICES

**Tyalgum Village Markets** – Last Saturday of each month except December, 9am–3pm.

**Love to sing? We'd love to hear you** – 'Voice Weavers a cappella choir' is looking for new members. All ages welcome, no audition, no need to read music. Call Mikako 0419 790 855, visit [www.voiceweavers.com.au](http://www.voiceweavers.com.au), our Facebook page or email [members@voiceweavers.com.au](mailto:members@voiceweavers.com.au)

**Kingscliff Ratepayers and Progress Association** meets Monday 1 May at 7pm downstairs at Kingscliff Public School.

**Chinderah Residents Association** meets Tuesday 2 May at 7.30pm at Cudgen Leagues Club.

## VACANCIES

**Technical Officer – Planning**  
**Senior Design Engineer – Water and Wastewater**  
**Project Officer x 2 (both positions min 2 years up to max 4 years):**

- Biodiversity
- Threatened Species

For more information and to apply:

- Visit Council's website [www.tweed.nsw.gov.au/careers](http://www.tweed.nsw.gov.au/careers)
- Contact Human Resources on (02) 6670 2495
- All positions close at 12 noon (NSW time)
- Late applications not permitted.

## ADVERTISING IN THE TWEED LINK

The Tweed Link is a cost-effective way to get your message delivered directly to 40,000 households and subscribers with more than 80 per cent readership. Not-for-profit and state and commonwealth departments are eligible to take paid advertising in the Tweed Link. Please check the Tweed Link Policy online for eligible advertisers. For advertising in the Tweed Link, advertising deadlines and our useful online advertising calculator please visit Council's website, [www.tweed.nsw.gov.au/TweedLink](http://www.tweed.nsw.gov.au/TweedLink) call (02) 6670 2400 or email [tweedlink@tweed.nsw.gov.au](mailto:tweedlink@tweed.nsw.gov.au)

**LET'S WASTE LESS**  
Invites you to a screening of  
**A Plastic Ocean**

Saturday 29 April 2017 @ 6pm

The Regent Cinema  
5 Brisbane St, Murwillumbah,  
New South Wales, 2484

BOOKINGS:  
[HTTPS://TICKETS.DEMAND.COM.AU/FILM/EVENT/1601](https://tickets.demand.com.au/film/event/1601)

Screening followed by a Q&A with:  
Tarra Martel, Tweed Shire Council;  
Jeanie McKillop, North East Waste and  
Tania Potts Boomerang Bags

Nibbles, drinks and prizes available on  
the night with thanks to our sponsors:

**A PLASTIC OCEAN**  
WE NEED A WAVE OF CHANGE.

JuJu's  
Gymea Eco Retreat & Spa  
New Leaf Café  
Stone & Wood  
PrintSpot Group

The Modern Grocer  
Mount Warning Tours  
The Gym, Murwillumbah  
Keith Coffee & Barber



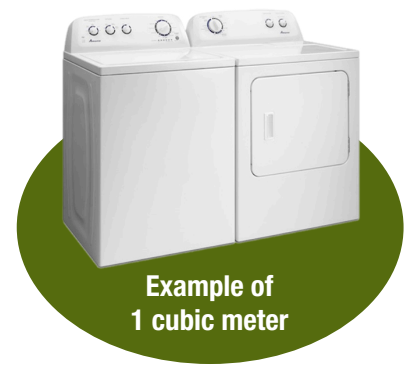
# HOUSEHOLD CLEANUP – CHECK YOUR DATE

**Available to:** Residential rated properties with a Council provided garbage collection service in the areas listed below. **Must not be used for** vacant allotment clearing, commercial or trade waste, or general farm clean-ups. Residential park living **NOT** included.

**Strictly one (1) cubic metre** collected **per household**. (Maximum length of material left out per household 1.8 metres or 6ft). Excess rubbish will not be collected and removal will be the responsibility of the householder.

Place items in **one neat pile** in front of your house where it will not obstruct the footpath, road, fences and letterboxes.

Please recycle what you can before the household cleanup as the majority of this waste is sent to landfill. Recycling options are outlined at [www.tweed.nsw.gov.au/WasteDisposal](http://www.tweed.nsw.gov.au/WasteDisposal)



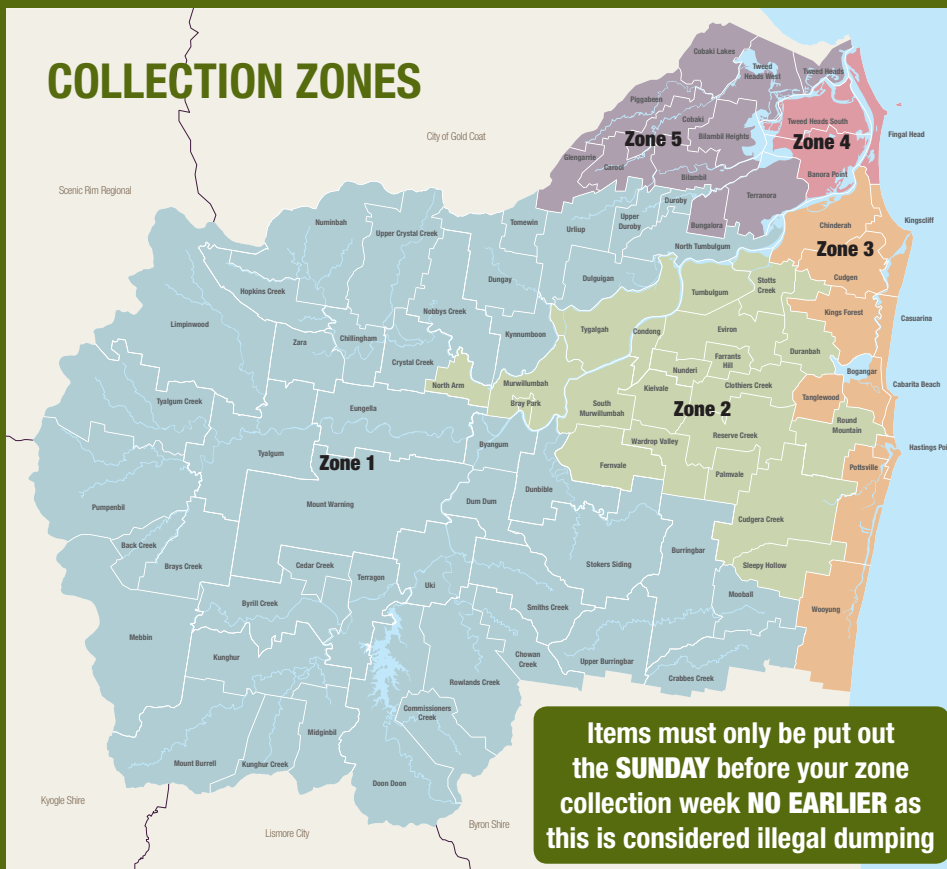
## INCLUDES:

- Household appliances
- White goods (**doors removed**)
- Furniture
- Floor coverings (soft)
- Mattresses
- Hot water heaters

- **Loose material must be placed in bags, boxes or bundled (tied).**
- **All items must be able to be lifted by two people.**
- **Fridge/freezer must have doors removed**

## EXCLUDES:

- Builder's rubble, earth and stone
- All fencing material
- Household renovations
- Liquids or chemicals
- Batteries of any type
- Paint
- Glass
- Oil and oil heaters
- Gas bottles
- Car parts/tyres
- Farm cleanups
- Green waste
- Asbestos



<p><b>Zone: 1</b> MONDAY 24.04.17 TO FRIDAY 28.04.17</p>	<p>Tweed Valley Way Fernvale (including Minnows Rd, Barlee Dr and Boston Pl) to the Tweed/Byron Shire boundary including Crabbes Ck, Mooball, Burringbar, Dunbible, Richards Deviation, Stokers Siding including Stokers Rd, McConnells Rd and Alroy Ln. Howards Rd, Blakneys Rd, Hulls Rd. Byangum, Mt Warning, Uki, Rowlands Ck, Chowan Ck, Byrill Ck, Terragon, Doon Doon, Crams Farm, Midginbil Hill, Kungthur, Mount Burrell to Tweed/Kyogle Shire boundary including Nimbin Rd. Tyalgum Rd, Murwillumbah to Tyalgum Village including Eungella, Turpentine Pl, Swifts Rd and Tyalgum Rd collection point. Brays Ck, Back Ck, Pumpenbil, Limpinwood, Chillingham and Hopkins Ck. Numinbah Rd to turn-around then to Crystal Ck, Nobbys Ck, Kynnumboon, Dungay, Tomewin, Urliup, Dulguigan and all of Dulguigan Rd to Bilambil, all of Hogans Rd to Bilambil, all of Urliup Rd to Bilambil, Upper Duroby, North Tumbulgum to Terranora Rd.</p>
<p><b>Zone: 2</b> MONDAY 01.05.17 TO FRIDAY 05.05.17</p>	<p>Tweed Valley Way Chinderah at Melaleuca Station to Fernvale Rd, Fernvale. Including Tumbulgum, Condong, Murwillumbah and Tygalgah. North Arm Rd to Numinbah Rd. All of Bakers Rd only. South Murwillumbah, Bray Park. All of Cudgen Rd including McCollums Rd, Melaleuca Rd then up before Cudgen Village including Duranbah. Eviron, Nunderi, Clothiers Ck, Reserve Ck, Palmvale, Cudgera Ck, Round Mountain. Pottsville Mooball Rd to Tweed Valley Way Mooball railway line including Clarkes Rd, Kielys Rd, Warwick Park Rd, Kudgerie Avenue, Sleepy Hollow Rd.</p>
<p><b>Zone: 3</b> MONDAY 08.05.17 TO FRIDAY 12.05.17</p>	<p>All of Tweed Coast Rd from Chinderah to Wooyung, Pacific Highway. Including all of Chinderah, Kingscliff, Casuarina, Salt, Cabarita/Bogangar, Hastings Point, Pottsville, Koala Beach and Seabreeze Estate. From Clothiers Ck Rd, Bogangar to Pacific Highway bypass including Tanglewood. Cudgen Rd from Tweed Coast Rd to Cudgen Village, Cudgen Heights.</p>
<p><b>Zone: 4</b> MONDAY 15.05.17 TO FRIDAY 19.05.17</p>	<p>Fingal Head Village to Barneys Point Bridge. Pacific Highway, Minjungbal Dr to Boyds Bay Bridge. Banora Point, Oxley Cove, Banora Point East, all of Parkes Ln and Fraser Dr in Terranora and Tweed Heads South.</p>
<p><b>Zone: 5</b> MONDAY 22.05.17 TO FRIDAY 26.05.17</p>	<p>Boys Bay Bridge to Tweed/Gold Coast Shire boundary. Tweed Heads, Tweed Heads West, Piggabeen, Cobaki, Bilambil Heights, Carool, Glengarrie, Bilambil. Terranora to Tumbulgum Bridge, including Duroby.</p>

## Mother's Day memorial service

Friday, 12 May 2017 at 11am

Tweed Valley Cemetery, 813–871 Eviron Road, Eviron

A combined memorial service by the Murwillumbah Churches  
Together and Tweed Valley Cemeteries



A shared moment for mothers to remember  
or to remember a treasured mother

Light refreshments provided

For details visit [www.tweed.nsw.gov.au/Cemeteries](http://www.tweed.nsw.gov.au/Cemeteries) or phone (02) 6670 2435

## DEVELOPMENT PROPOSAL FOR PUBLIC COMMENT

Notification of Development Application Determinations for the purposes of Section 101 of the *Environmental Planning and Assessment Act, 1979* (as amended).

### APPLICATION DETAILS

#### APPROVED

**DA16/0029** – Proposed demolition of existing house, six (6) townhouse development and 7 lot strata subdivision

Lot 678 DP 257438, No. 63–71 Sexton Hill Drive BANORA POINT

**DA17/0017** – Rock crushing in precinct 9 ancillary to previously approved bulk earthworks

Lot 1 DP 570076, Lot 2 DP 566529, Lot 1 DP 562222, Lot 1 DP 570077, Lot 1 DP 823679, Lot 46 DP 755740, Lot 54 DP 755740, Lot 55 DP 755740, Lot 199 DP 755740, Lot 199 DP 755740, Lot 200 DP 755740, Lot 201 DP 755740, Lot 202 DP 755740, Lot 205 DP 755740, Lot 206 DP 755740, Lot 209 DP 755740, Lot 228 DP 755740, Lot 305 DP 755740, Piggabeen Road COBAKI LAKES

**DA17/0155** – Shed

Lot 245 DP 829118, No. 8 Woodlands Drive BANORA POINT

**DA17/0117** – Two storey dwelling with attached garage and in-ground swimming pool

Lot 90 DP 1030322, No. 18 Hyndes Lane CASUARINA

**DA16/0890** – Two storey dwelling with attached garage, in-ground swimming pool and earthworks

Lot 3 DP 23687, No. 15 Seaview Street KINGSCLIFF

**DA17/0130** – Carport

Lot 30 DP 1119104, No. 6 Auro Court MURWILLUMBAH

**DA17/0042** – Demolition of existing dwelling, earthworks and retaining walls

Lot 1 DP 239522, No. 26 Cooloon Crescent TWEED HEADS SOUTH

**DA17/0110** – Studio and storage area

Lot 2 DP 128849, No. 616 Tomewin Road DUNGAY

The above development determinations are available for public inspection free of charge at the Planning and Regulation Division, Murwillumbah Civic Centre, during ordinary office hours or viewed on Council's DA Tracking site located at [www.tweed.nsw.gov.au/datracking](http://www.tweed.nsw.gov.au/datracking)


## WILD DOG AND FOX BAITING PROGRAM – MOUNT NULLUM

A **1080 wild dog and fox baiting program** will commence in the Mount Nullum district on Monday 1 May 2017 until Friday 30 June 2017. This program will target wild dogs and foxes impacting on livestock and native wildlife.

This program will be undertaken on Council managed land at Mount Nullum, Mount Nullum Nature Reserve and also properties along Kyogle Road, Kings Gully Road, Stokers Road, Ripps Road, Smiths Creek Road and McConnell's Road.

Please ensure all pets, particularly dogs, are kept restrained during this period.

If you are interested in becoming involved in future control programs or have any queries please contact Tony Heffernan, Senior Biosecurity Officer at North Coast Local Land Services Lismore on 0412 769193 or [tony.t.heffernan@lls.nsw.gov.au](mailto:tony.t.heffernan@lls.nsw.gov.au)



Readers who are unsure of when their meter is read can look up their water week at:  
[www.tweed.nsw.gov.au/MeterReading](http://www.tweed.nsw.gov.au/MeterReading)

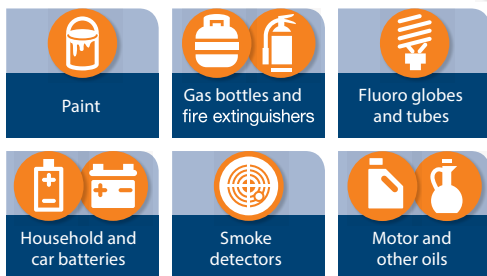
Waste matters  
Drop off your household  
problem waste



## Community Recycling Centres

Your local Community Recycling Centres  
are open. You can drop off:

**FREE  
SERVICE**



There are Community Recycling Centres at:  
Ballina, Byron, Casino, Grafton, Kyogle,  
Lismore, Maclean & Stotts Creek, Tweed

For more information or to find your nearest  
Community Recycling Centre contact your local council  
or visit [www.newaste.org.au](http://www.newaste.org.au)



Only household quantities accepted  
20kg or 20L maximum container size.  
This project is a NSW EPA Waste Less, Recycle  
More initiative funded from the waste levy.  
Visit [www.epa.nsw.gov.au](http://www.epa.nsw.gov.au)



The Tweed Link is published by Tweed Shire Council. It is available in full colour and e-subscriptions online at [www.tweed.nsw.gov.au/TweedLink](http://www.tweed.nsw.gov.au/TweedLink). Contact the Tweed Link: Editor Tweed Link, PO Box 816 Murwillumbah NSW 2484 or [tweedlink@tweed.nsw.gov.au](mailto:tweedlink@tweed.nsw.gov.au). Customer Service: Council's offices are located at Murwillumbah Civic and Cultural Centre, Tumbulgum Road Murwillumbah and Tweed Civic and Cultural Centre, Brett Street Tweed Heads. Offices open from 8.30am – 4.15pm, telephones available until 4.30pm Monday to Friday. Closed public holidays. Phone (02) 6670 2400 or 1300 292 872. Email [tsc@tweed.nsw.gov.au](mailto:tsc@tweed.nsw.gov.au). For Council information at your fingertips visit [www.tweed.nsw.gov.au](http://www.tweed.nsw.gov.au) or download Council's smartphone application from Apple App Store or Google Play. After hours emergency calls for Council services only contact 1800 818 326.