

BANORA POINT & DISTRICT RESIDENTS ASSOCIATION Inc.

President: Cliff Clothier Secretary: Pat Tate Treasurer: Clive Andrew
Vice President: John Sweeney Vice President: Brian Taylor
Correspondence: The Secretary, P.O. Box 936, Banora Point, NSW 2486
Website: www.banora.webs.com

Tuesday, 14 February 2017

The General Manager,
Tweed Shire Council,
P.O. Box 816,
MURWILLUMBAH, NSW 2484

Dear Troy,

First of all, a big thank you to yourself, Liz Collyer, Michael Chorlton, James Owen and Ron Cooper for attending our meeting on the 6th February to explain to our members why the Draft Community Strategic Plan was produced and explaining in much more detail, Council's vision for the Tweed into the future.

From the comments and questions from our members it would appear they believe that Council is taking on responsibilities and concerns covering areas which should be the responsibility of State and/or Federal Governments.

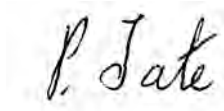
To summarise the concerns expressed, the items listed below are areas we feel need to be addressed.

- Some comments/diagrams were not fully explained as to their meaning. A prime example of this was the World Map where an explanatory note would have sense of what was intended.
- The message from the Mayor lacked substance. This set the theme for the whole document. Some of our members stated that after the first few pages they lost interest in what the document was intending to portray.
- Council and Councillors should be making decision based on facts and what is best for the *whole* community and not just one section of the community.
- Planning now for a dam at Byrell Creek on land purchased many years ago by Council for this very purpose.
- Streamline 'Development Applications' to an acceptable time frame.
- Plan now for the widening of the Tweed Coast Road, Fraser Drive, the full interchange at Kirkwood Road, Lakes Drive Bridge to cater for the predicted increase in numbers of residents moving to the area and the increase in tourism.

- Local issues are left to drag on too long without any explanation given as to what is causing the delay i.e. relocation of the SES facilities in Pioneer Parade.
- Our thoughts are that this draft document should have been incorporated with the document that will give the physical details of Councils intent for the ten year term.

We thank you for giving us the opportunity to study and respond to this required document.

Yours sincerely,

A handwritten signature in black ink that reads "P. Tate". The signature is written in a cursive style with a large, prominent "P" and "T".

PAT TATE
Secretary

Your Draft maintains that you deliver services to residents of the Tweed Shire for their benefit.

If so why has the Council effectively destroyed the beauty of the pond at Seabreeze Estate and left us with a sad compromise full of slime?

Also if you are so great at looking after residents, why have you effectively taken away from us the use of the car park at the southern end of Ambrose Park? Your patrons of the caravan park leave cars in that car park day & night resulting in residents wishing to use the estuary beach having to try & find alternative sites, if their lucky, across the busy Tweed Coast Way around the sports oval. This necessitates the crossing of Tweed Coast Way with a fair degree of risk, especially for children.

It seems the preference is for casual visitors to the caravan park which was designed without proper regard for the consequences of increasing its size & without adequate internal parking being possible.

The objectives of any Strategic Plan for the Tweed should be to preserve & increase the benefits of life for residents in the Tweed Shire. One thing is to have a Plan another is to execute it.

Bryan Threlfall



President: Jillian Hargreaves **Vice President:** Gary Buckpitt
Secretary: Suzi Bourke **Treasurer:** Melissa Jones
Correspondence: PO 100 Bogangar 2488.
Email: info@cabaritabeach.org **Web:** www.cabaritabeach.org
Facebook: [CabaResos](https://www.facebook.com/CabaResos)

February 25 2017

Draft Community Strategy Plan.

Thank you for the opportunity to comment on the Draft Community Strategy Plan.

We believe the document sets out many wonderful ideals with which everyone agrees.
We would like to call attention to these points for your consideration:

1. To increase the enforceability of this plan we require the wording to be more stringent and prescriptive. At present it reads: (p7) "must reflect and support the implementation of the Draft Community Strategy Plan." We would like to see developments complete statements about the ways in which they support the Community Strategy Plan rather than leave it to planning officers to check their compliance.
2. We believe statements should be added that name developments that are unacceptable eg CSG is not acceptable in the Tweed region. This could be added to Natural Resource Management and Leaving a Legacy.
3. We believe that Council should also write into Natural Resource Management that renewable energy industries will be encouraged. This should also be placed in Utility Services as a strategy in which Council plays a Leadership role.
4. The Built Environment is an area that causes the most concerns. It is critical to manage the timing of the implementation of public services because they often lag behind development which causes further problems. An efficient public transport system needs to be implemented at the moment a new development is opened. This also should be linked into the Moving Around goals. Similarly we would like to see the development of a rail link from Queensland to the Airport made a priority - this is essential for the predicted growth of visitors.
5. The 2.2 Engagement Goals are worthwhile. A further strategy could be to implement a youth internship program with Council and to develop partnerships with High Schools in the region.
6. While we welcome an increase in housing diversity and affordability we do not want to see the natural landscape decimated so we would not want to see more residential zones created in small villages. We particularly want our beautiful coastline maintained in its natural condition and not over developed. The appearance of the Gold Coast threatens and scares most residents who have chosen to live without these features.
7. People are important for our region's vitality and we would like to see more migrants actively encouraged to relocate. Greater support for local business chambers is an important aspect of improving both employment and services for the community.
8. The goal of "promote the distinctive character and diverse identities of towns and villages" is important and needs to be strengthened by inserting the word Protect after promote.

9. A strategy to strengthen the 4.1 Assurance section would be to “extend knowledge base of staff through extensive training and Professional development which is biennially monitored and measured on an individual level.”

WE the CBBRA do not have any political affiliations and are a non profit Community group run by volunteers.

Suzi Bourke
Secretary



Caldera Environment Centre Inc.

FOUR QUEEN STREET MURWILLUMBAH NSW 2484

PO BOX 5090 SOUTH MURWILLUMBAH NSW 2484

PH: 02 66 721 121

The General Manager
Tweed Shire Council
Murwillumbah NSW 2484

25th February 2017

Draft Community Strategic Plan 2017 - 2027

Caldera Environment Centre would like to submit the following comments in relation to the above plan. We have met with other peak environmental organisations in the shire being Tweed Climate Action Now (CAN) and Northern Rivers Guardians.

We fully support the submission and proposed targets recommended by Tweed CAN in relation to renewable energy.

We consider that the current draft plan is a step backwards from the previous plan. The current draft plan does not include the guiding principle of ecologically sustainable development as underpinning all of Councils activities. This removal of the most important foundation for Council activities needs to be reinstated as described in the previous plan.

The exhibited document does not include targets that are specific, measurable and timeframed. This is a serious step back from previous plans. We understand that these targets have been prepared so should therefore be included in the community exhibition.

1.1 Natural Resource Management

Proposed amendments:

Goal

Protect, maintain, and improve the environment and biodiversity status of the Tweed for current and future generations.

Strategies/actions

Develop and use regulatory instruments to protect, manage and enhance the environment.

Decrease the carbon footprint of the Tweed community and progress towards 100% renewable energy.

Targets

Increase in the areas of land and waterways under active management

Add a climate change target.



Caldera Environment Centre Inc.

FOUR QUEEN STREET MURWILLUMBAH NSW 2484

PO BOX 5090 SOUTH MURWILLUMBAH NSW 2484

PH: 02 66 721 121

This goal should ensure that there is a continued increase of funding for active management of land and waterways and maintaining the diversity of native flora and fauna. As well as Council and community reducing energy and water use and increasing the use of renewable energy.

Specific areas of interest of CEC members:

Water quality and supply-no dam at Byrrell Creek,

Retain and enhance biodiversity,

Continue nomination of Tweed as a Biosphere Reserve – hold a Councillor workshop and allocate funds,

Identify additional areas to include in reserve system including coastal sites into Tweed Coast Koala habitat areas and Council land at Mt Nullum.

Raise awareness of climate change,

Implement renewable energy initiatives,

Increase public walkways and bicycle ways in the shire, particularly along the Tweed River and Tweed Coast and connecting the coast to the range,

Build a light rail connection to Gold Coast and Byron Bay.

Thank you for the opportunity to provide input.

Regards

Rhonda James
Co-ordinator

Feedback on TSC Draft Community Strategic Plan 2017-2027

"There is nothing which rots morale more quickly and more completely than . . . the feeling that those in authority do not know their own minds" Lionel Urwick

This document provides feedback from Robert Budd on the Draft Community Strategic Plan 2017-2027. The feedback begins with my priorities for the Tweed. This is followed by more detailed commentary of the actual plan. I have referenced data points throughout the document. Finally, a sample SWOT analysis is included. Overall, I feel the Draft Community Strategic Plan is very weak, misses the mark and is in need of significant work. This plan does not demonstrate a deep understanding of the Tweed and its challenges.



Strategy is "about being different ... deliberately choosing a different set of activities to deliver a unique mix of value." Michael Porter

The plan is confused with operational and strategic information and appears to be a plan for planning sake, maybe to meet a regulatory requirement, tick a box and leave it on the shelf.

Priorities for me

1. Credibility of strategic plan - don't want planning for planning sake.
 - 2017 plan has a change in strategy from past plans, however this change is not explained.
 - Achievable objectives, too many targets are lacking measures, rather, simply stating direction as increase, reduce or be average. Targets need to be quantitative. Assume these targets are 2027 targets. Some have already been achieved ie continue to meet 'fit for the future' benchmarks. Does not paint the picture for Tweed 2027.
 - Strategic objectives, many of the objectives are operational or compliance. Don't belong in a strategic plan, move to operational plan.
 - Need to establish a common understanding of where we are relative to where we want to be. The key challenges. SWOT would be helpful. If we don't know where we are then, how can we trust a strategy that claims it will get us to where we want to be.
 - 42 strategies/actions are identified in the plan. These are too tactical to be included in a 10 year strategic plan. many are very simplistic eg "achieve average unemployment rates by providing more opportunities to work"!
 - The current plan is fixated on the projected population growth but does not talk to how the region will accommodate this growth. ie where will the additional 33K people live and the additional 16k houses be built? Schools, work, hospitals, theatres. Without a plan I suspect the Tweed will become an extension of the Gold Coast.
 - Plan lacks vision, leadership and inspiration needed for the Tweed
 - We cannot get to the vision by simply keeping the lights on and the seat warm, need to do more!
 - Most likely to become "shelf-ware" - needs to be **bold and inspire people!**
2. Vision for the 2027 built environment - Tweed Heads and Murwillumbah - how can it be that these two important locations are missing from the plan?
 - "**Tweed Heads** recognised as a regional city"¹ This is a big deal but the current Tweed Heads is a long way short of being a regional city. Where is the vision and plan for this new regional city. Where will the CBD be located? What is to become of the original town centre? Currently this is not a showcase for town planning. Tweed Heads is dangerously close to being a dormitory/retirement suburb of the Gold Coast.
 - **Murwillumbah?** What is the vision for the town? Currently many vacant shops and op shops seem to be the biggest line of business. Largest building in town is Centrelink. Building work in the town is a disgrace ie replacement of old school of arts building with low quality shopping mall, Southside shopping mall, site of old Australian Hotel. What is to become of the town, hotels? Murwillumbah Bowls Club site? Prospero Street refurbishment. what happened to the idea that Murwillumbah could be an arts hub for the Tweed? What is the future for Murwillumbah Hospital?
 - Consider making main street a pedestrian mall, preservation order for CBD that protects and preserves art deco architecture and allows for new building sympathetic to the existing architecture.
 - Need some big ideas for Murwillumbah to make up for the years of neglect. see Thrive 2484 and Creative Caldera for a start!
3. Responsible decision making. feedback from many people indicate something is seriously wrong here.
 - 6 years to approve Mooball development
 - Burringbar Cheese maker plans, red tape and delays
 - Small businesses met with excessive red tape, and cost
 - No vision for the built environment makes for a very political decision making process, imagine the drama of approving 16K new homes on the Tweed over the next 10 years.
 - No vision, lack of strong leadership makes it risky for developers and investors in the Tweed
4. Customer focused plan. The whole Draft Community Strategic Plan is inward focused.
 - No mention of overall customer satisfaction with council. Recommend using Net Promoter Score. Does not establish linkage of state and regional plans!

¹<http://www.planning.nsw.gov.au/News/2016/Tweed-Heads-to-be-declared-regional-city>

Vision

The Tweed will be recognised for its desirable lifestyle, strong community, unique character and environment and the opportunities its residents enjoy.

"you can't manage what you can't measure." Peter Drucker

Not one of the Tweed Shire towns or villages made it to the Australian Traveler "100 Best Towns in Australian" list² so we have a ways to go to meet this vision.

How are we doing after 6 years?

- Unchanged since 2011 Community strategic Plan was for 2021 now maybe 2027!
- How desirable is our lifestyle?
 - No growth in local economy, \$2,916M GRP 2011 to \$2,885M GRP 2015³
 - No local job growth, 28,996 local jobs 2009/10 to 28,289 jobs in 2014/15⁴
 - 19% of workers, work outside the Tweed shire
 - Housing is considered unaffordable for young people based on price and income⁵
 - Population projected to grow 1.069% pa⁶, good measure of desirability however,
 - Most of Sydney is more desirable base on this measure
 - Population growth and stagnate GRP is not a good combination
 - Bottom line
 - People love the Tweed
 - Employment opportunities stop people from making the move or drive them away
 - Retirees, moving from the city, can make the move. This in turn, drives the health services industry. The highest population growth is with the aged.
 - It will not be desirable to have a community with such a distorted demographic.
- Strong Community
 - Indicators for community strength⁷
 - Ability to get help - if you live away from Tweed Heads this is becoming more difficult
 - Community participation - people of the Tweed do get involved in community work but too many do not!
 - Local Area Ammenities - very limited tertiary education options in the Tweed. Rural villages have almost nothing.
 - Community attitudes (do I feel safe?) - police presence is mostly at Tweed Heads. Knox Park is not safe.
 - Governance (Participation) - Community engagement strategy

²<https://www.australiantraveller.com/100-best-towns-in-australia/>

³<http://economy.id.com.au/tweed/gross-regional-product>

⁴<http://economy.id.com.au/tweed/Employment-capacity?>

⁵<http://www.sbs.com.au/news/map/housing-affordability>

⁶https://australiademo.opendatasoft.com/explore/dataset/nsw-population-projection-2031-lga-level0/?sort=average_population_growth_per_year

⁷http://www.dpcd.vic.gov.au/_data/assets/pdf_file/0007/142369/Indicators-of-community-strength-framework-and-evidence-final-July-2011.pdf

After 6 years the vision is no clearer, we have no idea if we have made any progress towards it and when we get there, how would we know?

Council's Mission Statement

Working with community and partners, provide leadership in facilitating and delivering services that manage growth sustainably, create opportunity and enhance the value of our civic and natural assets for this and future generations.

Unchanged since 2011

Goals and Strategies - A Change in direction

1. *Leaving a legacy, lets hope it is a good one! no mention of the built environment other than "no increases". Surely the built environment is one of the most important legacies we will leave for the future.*
2. *Making decisions with you, is this the existing community engagement strategy?*
3. *People, places and moving around - this is an extremely weak section that seems to be lost!*
4. *Behind the scenes - This is internal TSC operations, it is not strategic. Every region does this! Recommend it be removed and included in Operational Plan.*

From 2011 to 2016 the strategic themes were:

1. Civic Leadership
2. Support Community Life
3. Strengthening the Economy
4. Caring for the Environment

It is not explained, nor clear why the change in direction! Given that the vision and mission has not changed. We can only assume that the prior plan was not working!

Goals and targets

Leaving a Legacy Natural Resource Management

Protect and manage the environment and natural beauty of the Tweed for current and future generations.

- Increase in the areas of land or waterways under active management
- Increase community participation in protecting and managing the natural environment
- **Annual reduction in energy use** - *energy use has been stable 2012 - 2016⁸ at approx. 460,000 MWh electricity, don't know data for fuel and gas and if this includes Condong Sugar Mill. The strategy section does not give much in the way on how this will be achieved?*
- **Reduce greenhouse gas footprint** - *Australia will reduce emissions to 26-28 per cent on 2005 levels by 2030⁹. The plan tells us this will be achieved by being 100% self-sufficient in renewable energy. However, with significant uptake in renewable energy technologies the TCS CO₂ emissions have remained around 22,000 tonnes¹⁰ over the past 6 years. to get to Australian government targets more will need to be done. Not all renewable technologies will reduce greenhouse emissions. Not sure if the above data takes into consideration the impact of Condong generation power that has a smaller carbon footprint than the NSW coal fired power stations. ie 190,000 tones CO₂ pa reduction from Condong¹¹*
 - *A producer of greenhouse emissions in the Tweed is the Sugar industry. assume 4,508 ha of sugar cane¹² and 2,406 kg of CO₂ eq per ha¹³ gives 10,846 tonnes. This would not include the CO₂ emissions from the power station that can supply up to 50% of the Tweed's electricity needs. Moving to 100% green harvest on the Tweed may make a real difference here. It is noted that sugar crop is a CO₂ sink that offsets the emissions. This may hide opportunities for reduction in emissions.*

⁸http://www.tweed.nsw.gov.au/Documents/Natural%20Resource%20Management/TSC07874_Northern_Rivers_Regional_SOE.pdf

⁹<http://www.environment.gov.au/climate-change/publications/factsheet-australias-2030-climate-change-target>

¹⁰http://www.tweed.nsw.gov.au/Documents/Natural%20Resource%20Management/TSC07874_Northern_Rivers_Regional_SOE.pdf

¹¹<https://www.assct.com.au/media/pdfs/2009-M-6-Palmer.pdf>

¹²http://www.canegrowers.com.au/page/Industry_Centre/About_Us/statistics-facts-figures/

¹³<https://www.ncbi.nlm.nih.gov/pmc/articles/PMC2893520/>

- *100% self-sufficient in renewable energy by 2027 sounds more like a target than a strategy. To achieve this would be a big deal and will require significant investment!*
- *Tyalgum has been working towards 100% self-sufficiency in renewable energy for some time. How far have they come towards their goal? Estimates for investment are between \$4M and \$7M¹⁴. Extrapolating this to the Tweed results in an investment of \$1.3B to \$2.3B. This would not include the asset write down by Essential Energy.*
- *Maybe we are closer to this target than I think. Condong has 30MW capacity. This supplies all of the power to Condong Mill and a significant proportion of the Tweed Shire electricity needs. A significant number of houses in the shire have PV.*

Asset Protection

Capture and convey rainfall runoff back into the environment and manage the risk of flooding and its impacts for property owners and the community -*this goal does not go far enough! Does not consider all natural disasters ie bush fire, cyclone, drought. What about protection of our cultural and historic assets?*

- *No increase in the number of properties affected by over- floor flooding. - as a resident of Tumbulgum this target concerns me. Is Council saying that Tumbulgum has no future? There should be other options for these residents.*
- *A bit limited! what about riverbank erosion, river health, coastal environment, etc.*

Utility Services

Provide high quality and secure water, sewer, rubbish and recycling services that meet health and environmental requirements.

- *Divert 70% of rubbish from landfill - It would be better to reduce the total waste disposed in landfill by 70%. Given the Tweed association with Solo Resource Recovery the Tweed should be a model for waste reduction.*
- *“Australia generated more waste per capita than the US, Canada and NZ but less than the UK and Germany.”¹⁵*

¹⁴<http://www.abc.net.au/news/2015-10-08/tyalgum-hopes-to-become-the-first-australian-town-to-go-off-grid/6834332>

¹⁵<https://www.environment.gov.au/system/files/resources/4b666638-1103-490e-bdef-480581a38d93/files/wgrra.pdf>

- *Reduction in waste generated per person from 2,100kg¹⁶ to 1,500kg (seems reasonable as QLD has committed to a 400kg reduction by 2020¹⁷)*
- *Eliminate roadside dumping*
- *70% recycling target*
- *Eliminate plastic shopping bags from Tweed Shire - encourage re-use of shopping bags*
- *establish shire-wide green waste bins*
- **Comply with the Australian Drinking Water Guidelines Reuse 100% of biosolids - TSC already comply to this objective (operational, compliance)**
- **Reduce the number of interruptions to services per year - This goal is inflationary in the same way it was for the electricity companies (Gold plating the network). What people want is compliance to minimum acceptable service levels for a price, Operational**

Making decisions with you

Built Environment

Plan and regulate the built environment to balance the social, cultural, economic and environmental needs of the community.

- **Achieve an average application determination timeframe equivalent to or better than the State average - striving for mediocracy won't make the Tweed desirable. Would be better to establish Service Level Agreements with ratepayers and measure performance against SLA.**
- **Increase housing supply to cater for future generations - Future generations will need more than a house! Strategy does not go far enough to explain how this is going to happen, i.e.**
 - *1482% population growth for Cobaki and 89% for Bilambil. Kennedy Dr is already a traffic bottleneck, can only imagine what an additional 15,000 people will do to this area.*

¹⁶[http://www.abs.gov.au/ausstats/abs@.nsf/Lookup/by%20Subject/1370.0~2010~Chapter~Waste%20per%20person%20\(6.6.3\)](http://www.abs.gov.au/ausstats/abs@.nsf/Lookup/by%20Subject/1370.0~2010~Chapter~Waste%20per%20person%20(6.6.3))

¹⁷<https://www.cabinet.qld.gov.au/documents/2010/nov/qld%20waste%20reduction%20strategy/Attachments/waste-strategy.pdf>

- 175% population growth for Casuarina
- 33% population growth for Pottsville
- *Almost no growth is forecast for the rest of the valley, how is creating such a high population density along the coast a good thing? This approach will place excessive pressure on existing Tweed Heads infrastructure and I see no plan to address it in this plan. We planning for the Tweed to have a narrow band of coastal, high density urban sprawl and all the negative impact that will come with it.*
- *Future generations will need affordable housing, cost relative to earning ability. This high concentration of population in high cost areas won't contribute to this.*
- *Is it wise to build more housing on the coast when we are also concerned about the impact of global warming, sea levels rising and increased extreme weather events?*
- *Need to be thinking more about what Murwillumbah could do to help with the projected population growth. Don't feel we are doing enough to leverage this asset. Murwillumbah already has infrastructure that could support increase.*

Engagement

Encourage public participation in developing the future of the Tweed with information, education and community partnerships. *Engagement is a two way street, collecting feedback and doing nothing with it is not engagement.*

- *Achieve a majority of the community expressing satisfaction or better with Council's engagement. Why only engagement, expand overall satisfaction with Council using NPS*
- *Resolved 60% of Council related enquiries at first contact. - benchmarks are >80% with best practise >90%¹⁸. Striving for poor performance won't get to the vision. Operational*
- *Continue to meet 'Fit for the Future' benchmarks - operational, compliance every NSW council has to do this.*
- *Increase the proportion of Tweed residents volunteering in the community - I like this one however, how many people now volunteer? How many more should we have volunteering by 2027? How are you going to do this?*

¹⁸http://www.limebridge.com.au/page/Learning_Centre/Learn_From_the_Leaders/Benchmarks_for_First_Contact_Resolution/

People, places and moving around

People

Provide social, cultural and economic opportunities enabling healthy, safer and more inclusive communities.

- Increase use of Council's community buildings and facilities
- Implement the Economic Development Strategy - *not really a strategic result, Better to express this in terms of GRP, currently at \$2.89B and stalled, where do we want to be by 2027?*
- Increase visitor numbers to the Tweed - *currently 1.2 Million¹⁹ pa, or 13.5 visitors per resident. How many more visitors can we accommodate? What type of visitors will Council encourage and what is the economic impact?*
- Decrease in the number of crimes committed against people in the Tweed - *lower crime rates are always a good thing however, the trend for crime rates on the Tweed has been on the decline for some years²⁰, so should this target be included in a strategic plan for 2027? Maybe we should strive to have the lowest crime rate of any LGA in NSW.*
- Reduce overweight and obesity rates - *Shouldn't this be a federal target as it impacts health costs? Unclear how Council can achieve this.*
- Achieve an unemployment rate of equal to or lower than the regional NSW average. Maintain or increase the proportion of Tweed residents working in the local area - *Maybe the Council could lead by example. Need to do better, to encourage medium sized business. Does not seem right that the biggest employer is TSC. There are fewer jobs in the Tweed than people working. Wouldn't it be something if it was the other way around?*

Places

Provide places for people to live, work, visit, play and enjoy the Tweed.

¹⁹<http://www.tweed.nsw.gov.au/TheTweed>

²⁰<http://myboot.com.au/2485/Tweed%20Heads/crime.aspx>

This does not make sense! This is not a goal as people already live, work, visit, play and enjoy the Tweed. The plan tells us we are going to get to this goal by providing for sporting, recreation, leisure and cultural pursuits, tourist accommodation and promotion! Council's targets are inward focused:

- Increase use of sporting and recreation facilities
- Increase satisfaction with Council's cultural facilities - *better to included in overall customer satisfaction target*
- Increase the occupancy of Council managed holiday parks - *let's hope we aren't getting to this target by reducing the number of sites available to holiday makers!*

Moving Around

Provide an integrated, connected, safe and accessible transport network that facilitates efficient, coordinated and reliable movement of people, vehicles and air traffic. *I am speechless! How do the following provide for this goal?*

- Reduce the number of pedestrian and vehicle accidents per capita
- Increase the supply of alternative transport options
- Reduce the number of transport network hazards

Behind the scenes

Every council and shire does this! This is operational and not strategic. It is not a strategy to meet legislative and compliance requirements. It is a legal requirement. This does not belong in a Community Strategic Plan!

Assurance

Support Council to meet its legislative and compliance requirements and implement opportunities for organisational improvement.

- Completion of all statutory and strategic tasks (as required by the Office of Local Government) on time - *Not a strategic target, this is a requirement.*

- Consider all Audit, Risk and Improvement Committee recommendations. - *This is not a target! I would expect it prudent that council would consider all recommendations made by those who they paid to make them!*
- Review and implement an enterprise risk management framework - *Not a strategic target. How is this different from the “Enterprise Risk Management policy” of 2016?*

Support Services

Foster safe, productive and professional workspaces, enabling Council staff to source, manage and maintain services to the community.

- Maintain staff turnover in line with industry benchmarks - *staff turnover is simple to measure however does not differentiate unwanted turnover from healthy turnover.*
- Have less than 3 health and safety incidents per 100 full time equivalent staff each year - *This is not making a lot of sense. Assume 700 employees that results in 21 incidents of which 15 (see below) are lost time. Recommend council look at implementing a Zero Incident Safety Culture, many organisations are well on the way to achieving this.*
- Have less than 15 lost time injuries each year - *seems very high and out of step with industry benchmarks, Energex achieves a LTIFR of 4.59²¹. Assuming 700 employees and 15 lost time injuries the LTIFR for TSC is more like 12.7. Shocking! Are we planning to injure people?*
- Improve staff satisfaction levels - *recommend this be changed to employee engagement levels as this will lead to a better measure of the value staff bring to the council and leads to performance improvement.*

²¹https://www.energex.com.au/_data/assets/pdf_file/0006/372624/Annual-Performance-Report-2015-16.pdf

Sample SWOT Analysis

This is a basic SWOT designed to demonstrate how this tool could be used to support the strategy process for the development of a Community Strategic Plan for the Tweed Shire.

- Build on Strengths
- Eliminate Weaknesses
- Take advantage of opportunities
- Mitigate threats

Strengths

- No crowds, easy to do things and get about
- World Heritage parks
- Tweed Regional Gallery
- Tweed River for recreation
- Uncrowded Tweed Coast is attractive for surfing, fishing and beach goers
- Caldera and Wollumbin/Mount Warning
- Border Ranges parks and surrounds
- Hidden Gems
- Heritage and Rural character
- Tweed Agricultural Show
- Campgrounds

Weakness

- Tweed Heads town planning or lack thereof
- Murwillumbah has been left to decay
- Housing not affordable
- Land values increasing with increased demand for housing
- Strong economic dependence on Sugar industry
- Strong Economic dependence on tourism
- Limited/poor public transport system
- Lack of overnight accommodation
- Coast hugging population
- Quality of food and visitor services mixed and sometimes below expectations
- Restaurant prices too high

Opportunities

- Proximity to major tourist centres of Gold Coast and Byron Bay
- Disused railway
- Value added agriculture products ie rum, cheese
- Nightcap trail
- Creative Cauldron Strategy
- Thrive 2484
- Tap into highly skilled and passionate people, particularly up the valley
- Differentiation from neighbours

Threats

- Increased population may diminish what many like about the Tweed
- Tweed Heads getting lost within Gold Coast City, losing its Tweed Shire identity
- Fall in demand for sugar and sugar prices
- Competition for tourist \$ from both our northern and southern neighbours
- High land prices making farming no longer viable
- A "me too" copycat approach based on successful events in neighbouring shires
- Global Warming impact on the Tweed

Comments with respect to the Community Strategic Plan – Tweed Shire Council 2017-2027

Submission by Carolyn Byrne

Page 3 typo "maintain"

Page 4 'Acknowledge as the 2nd most biodiverse region of Australia'; what is the source of reference to this statement and second to what?

Page 5 What is the source of the statistical data, people are likely to use these figures in future presentation and the figures are also likely to change over the 10 years, therefore there should be a reference to the source and date of that information to make it valid.

This document is meant to be in plain English yet acronyms are still being used, including but not limited to, GRP and GSP, with no definitions or explanations.

Page 15 Strategy includes, to decrease carbon footprint of the Tweed community and progress towards 100% self-sufficiency in renewable energy.

Yet the targets are measured in reducing greenhouse gases. To be measurable should the strategies/ actions align better with the targets?

Page 16 1.2 Asset Protection

Council's role should extend from being a provider of these services, to working Collaboratively with stake holders – cane farmers, developers, individual land owners etc and Council would also have a Leadership role – particularly with developers.

Page 17 Utility Services

Water – high quality and secure water, what about sufficient water supply (water security) for future generations. Many reports generated by Council have demonstrated this is a matter of urgency that needs to be address by this council to get the infrastructure in place for future generations. Whilst steps are being taken to obtain reports from experts, the raising of Clarrie Hall dam is yet to be given the 'green light' and this is only one step into providing water security for the population of this region.

Page 19 Built Environment

Achieve an average application determination timeframe equivalent to or better than the State average.

Compare with .. clearer wording.

Achieve better than State average timeframes when determining development applications.

Increase housing supply to cater for future generations, when the current supply is inadequate. Measurements would need to be crossed referenced with population projections, not just an increase number of built houses. Hopefully we will not have a decrease in housing supply, unless there is some catastrophic event. Each DA approved and built is an increase in housing, but not sufficient to cater for the future generations.

Page 23 People

Some very aspirational targets, eg reduce overweight and obesity rates. This is not Council's core business and should not be a focus of a Community Strategic Plan. Perhaps a better option is to provide infrastructure to improve the health of individuals. This would go to measurable targets such as fitness equipment in parks, the use of council facilities to conduct fitness and wellbeing programs. This is something that Council can measure, rather than getting people to stand of scales or wait for third party data to become available into the future.

End of Submission.

— Please ELOM
Received.
21/2/17 - (a) Kingcliff Chamber of Commerce
action

Submission to Tweed Shire Council Draft Community Strategic Plan

2017-2027

Thank you for the opportunity to provide feedback on the Draft Community Strategic Plan 2017-2027.

The draft plan has four significant weaknesses in my view:

1. Council's legislated role, charter and boundaries are not clearly defined upfront. I like the way the plan spells out council role with respect to the strategies and actions, however, I'd like to see a clear upfront statement that sets out its legislated charter and boundaries, so I have a reference point for considering its strategies etc.
2. There doesn't appear to be any in-depth analysis of the key attributes of a prosperous, attractive, resilient community to underpin the discussion of the community's future direction and vision. I'd like to see a clear statement of the core foundations/attributes of a secure, successful, prosperous, attractive, resilient community and a list of the key challenges facing the Tweed community in moving towards that outcome. Each of the key factors contributing to the community outcomes and the key challenges need to have numerical indicators attached to them, so progress can genuinely be measured.
3. Without further information, the plan appears unbalanced. Prosperous communities have employment opportunities for most citizens seeking employment, and are positioning themselves for emerging industries that can build on the assets of the community. Whilst tourism will remain important for the Tweed, it is a fickle, vulnerable industry which will result in larger variations in economic outcomes. An overrepresentation of retail industry in the industrial structure signifies a lot of low income casual and part time work which often leads to poor areas and low socio-economic outcomes. Service industry businesses will naturally grow with population growth and its changing characteristics. The Tweed community needs more sustainable jobs in higher income industries. There appears to be an under emphasis (within the plan) on the economic foundations of the Tweed community. A casual observation of the local media indicates an anti-business sentiment from council, which creates a negative business environment.
4. All targets listed in the plan need numerical indicators. The indicators need to reflect the current situation and the target with key indicators of how progress is measured. This will provide a stronger framework and improve accountability. Anything less is fairly meaningless.

I trust this feedback assists with the development of the plan.

Yours Sincerely

David Stubbin

General Manager

Tweed Shire Council

tsc@tweed.nsw.gov.au

FHCA response to the TSC Draft 2017/2027 Community Strategic Plan

Thank you for the opportunity to provide feedback on the Draft Community Strategic Plan 2017/2017.

Our community discussed the draft plan at the February 2017 meeting.

Generally there was a positive response to the draft plan given that it is very broad – as strategic plans generally are. However people were most interested in the next step in the planning process where operational plans are identified as they have specific suggestions and are interested in how the more strategic directions will be reflected in the operation planning processes.

Members also noted that some members do not have access to technology and appreciated the single printed copy provided to the Association. However others who sought to examine the document on line noted that it was a very large size in terms of download. This might be an issue for Council to take into account in future consultation processes and when developing strategies where feedback is sought. Similarly access to printing services are not readily available for many limiting their access to the documentation and ability to provide feedback.

There were some comments that the badge – ‘living and loving the Tweed’ was quite bland.

We appreciate the work to prepare and produce the draft plan and look forward to the finalised document.

Yours sincerely

Helen Twohill

President, Fingal Head Community Association Inc.

PO Box 26

Fingal Head NSW 2487

Good morning

Thank you for the opportunity to have a say about the Tweed Shire, I believe it is well overdue. My first point would be in future for drafts would be to make sure that the draft goes to as many people as possible. I believe it would be better for council to use all forms of media. The council does not have a Facebook page or any other types of social media and are therefore missing out on a whole demographic that could have contributed to the draft. The News article in the Tweed Daily Mail on Facebook did not include the link to the site and it was not reported in any other media outlet such as the Bulletin.

I believe this is extremely poor marketing of the draft and the feedback and just not good enough. If you want people to have their say people must know about it and council needs to be ahead of what forms of media people are using to get their information. It should have being advertise to as many people as possible. I would suggest extending the date and re releasing the draft and your say to include this so as to get as many people having there say.

Public Transport

Bus

Public Transport on the Tweed is way behind what it should be. A review of public Transport routes and time tables needs to be reviewed. It is not good enough that services from Banora Point during the week run every hour and on weekends every 2 hours. The tweed prides itself on being green but does very little in the way of reducing cars of the roads. The Tweed has no park and ride facilities, no bus interchanges and very few bus shelters. In the plan it states about truism yet services don't run to tourist locations or run to the major beaches and I believe there is only 1 service from the airport into Tweed. How many services run between the Tweed and Byron Bay, not many if at all. people should be able to get all major hubs within the tweed and adjoining shires using public Transport.

A review of School services needs to be conducted. Drive to any school area and the traffic is unbelievable. Why is it so many parents drive their children to school. Is this because there is not enough services, there is not enough stops, stops aren't close to where they live, services are full or is it too expensive. A good proportion of traffic in morning and afternoons is parents dropping off and picking up school children. a campaign ends to be conducted to get this traffic of the road and get more school children onto public transport (plus it is healthier for the kids as well)

Like it or not but the northern resident of the Tweed economically and socially have more ties with the Southern Gold Coast. More services need to be linked in with the Translink networking with the future extension of the light rail to the airport the council need to upgrade services to and from the end of line tram station to link up residents from the Tweed to this service. With an ageing population and with Tweed wanting to maintain its 'Green' image, more needs to e done on increasing public transport services(The Tweed has one of the highest drink driving rates in NSW surely this alone is reason to look at services like a night link service), routes and facilities, (services to the Tweed hospital don't meet the needs of the community).

Light Rail

The extension of the light rail to Tweed hospital would be a huge benefit for the Tweed not only in tourism but also for the residents of the Tweed. The current Translink route 700 bus services runs close to this already and making the whole route light rail would be a huge boost to the economy in the northern Tweed area. The light rail already goes to Gold Coast hospital and having the 2 hospitals linked by public transport would be a huge benefit to residents of the Tweed especially the elderly and sick who are restricted in driving and regularly have to travel up the coast for treatment. Areas that the light rail pass through have already seen a massive boost to the economy in this areas and the same would be seen in Tweed if it was to be extended.

Bike Paths

Again the Tweed prides itself on being a 'green' shire, however, the infrastructure doesn't support this. An upgrade to the bike network within the Tweed is desperately needed, especially in the northern part of the Tweed. There needs to be an integrated bike network that links facilities and infrastructure, such as, schools (again getting traffic off the road and making a safe environment for our children), shops, beaches and public transport infrastructure. At the moment the network is patchy at best and is not integrated. Getting people out of their cars can only benefit the environment and the community. Where bikeways can't be done (remember bikeways do not need to follow roads) , widening of footpaths and crossings need to be done so kids and family can ride safely and also allow access to mobility scooters.

The network also needs to link in with the existing Gold Coast network, especially in places like the new development at Cobaki lakes and places like West Tweed which can be linked in near the airport. Residents should be able to access the bikeway from anywhere in the Tweed and not have to ride on roads to access facilities within the Tweed.

Heavy Rail

The heavy rail from Brisbane to the airport is desperately needed but can only be done with the support of the NSW state Government and Tweed Council. The Rail needs to go to the original proposal location in Grey St Tweed Heads. The heavy rail is vital for the Tweed community to access employment and education. This would be huge boost to the area not only in tourism but also provide work and allow access to a greater diversity of work in different locations for Tweed residents. This could also leave options open for a transit centre to be developed at the airport.

Heavy rail also need to be developed in Northern NSW. At the moment Tweed residents have very little public transport access to the airport as do tourist who fly in. Consideration needs to given to developing heavy rail services in the Tweed and having the the Train from Sydney all the way to Tweed linking up with the QLD heavy rail. The rail needs to go to major destinations such as Byron Bay. Again this is vital to the area to increase accessibility for residents of the Tweed as well as for the environment.

Walking Tracks

The Tweed region has some of the best environment in Australia yet it very inaccessible. Developing a network of walking trails thought the Tweed Valley e.g walking train from the ranges to the beach, or walking from Tweed to Uki via small villages would be a huge boost

to tourism and keep in line with the eco tourism of the area. Liasing with property owners and putting trails through private property and national park would mean you would be able to start and finish the trail in urban areas and could potentially then link in with bikeways.

Parks and Recreational Facilities

The Tweed prides itself on being family friendly, however has very few well established parks with playground facilities. In the Tweed Heads, West Tweed, South Tweed and Bilambil areas there is 3 playgrounds. The draft talks about childhood obesity yet does not outline infrastructure to deal with it. There should be multiple allocated parks and playgrounds in every suburb of the Tweed where residents can walk to and could even be linked in with future bikeways. Along with playgrounds is BBQ facilities. We have a beautiful river system but very limited places to enjoy it with families. Having a bikeway follow the river system with playgrounds and BBQ facilities would be a huge benefit to family and having a coastal bike network with the same would greatly improve accessibility. Just need to look at places like Caloundra on the sunshine coast who have excellent parks and playground facilities. This should be a model for the council. As well as playgrounds there is a little to no facilities such as basket ball hoops, netball rings, handball walls, Cricket nets, Skate parks (the skate park outside the Tweed river school is in a ridiculous position right next the intersection and is poorly designed), soccer goals, etc in the Tweed area in the parks. Again we want our kids to be active but there are very few facilities for this.

Also why is there no council pool north of the Tweed River. Surely the population would support a council pool in Tweed or West Tweed with kids facilities, swimming lessons and attached gym.

Development

Development in the Tweed seems to be a very dirty word and has impacted the Tweed significantly. While I am against the Tweed being over developed not all development is bad and it is needed to ensure growth of the area. Many parts are already developed but many are in dire need of an upgrade. The anti development slogan cannot be applied to all areas of the Tweed and each suburb needs to be looked at differently for development. The Tweed heads, West Tweed and South Tweed areas are already developed but are becoming very run down and old and are in need of revitalisation. Some new development ideas might be the following:

- Upgrade to the Tweed Heads CBD area to include a mall precinct and after hours precinct with bars, restaurants alfresco dining and cafes. At the moment the Tweed has very little in the way of after hours entertainment except for the RSL and clubs. There is only so many times you can go out to the clubs and many of the youth travel over the border to go out for a night. This is money that could be staying in the Tweed lost to QLD. It is important to a place's identity to have a vibrant night life for people to socialise and relax.
- Development of a university precinct in and around the Tweed heads library site and upgrade to the Tweed Heads Library. Now that the Southern Cross University has

pulled out of the Cobaki lakes development and new area should be established. Many students have to leave the Tweed or travel up the coast to study. There should be an option for students to be able to study in their home as well as attracted students from all over the country. There is also no viable auditorium in the northern part of the Tweed for kids to go see plays or shows.

- Upgrade to the Border Park Raceway to include function centres and possible convention room.
- Making the Tweed mall area and surrounds and Tweed City and surrounds more pedestrian friendly
- Improve street scaping design (No Whale Statues please) as well as street lighting and garden design.
- Upgrade to the Council pools in South Tweed.
- Upgrade to the old Scotts Market Basket site to include after hours precinct, this could be developed to include food trucks and food stalls or a market area,(please no more car yards), Similar to the Eat Street Markets in Hamilton, Brisbane.
- Upgrade of Minjungbal Drive and Kennedy drive. Minjungbal Drive road is an eyesore and is in desperate need of an upgrade to its street lighting, street design, footpaths, power poles etc. This is one of the main roads in and out of the Tweed. Kennedy drive need an upgrade to the road to include a bikeway and better street scaping

I don't believe the above development would impinge on the beauty of the Tweed, but would enhance it. The northern part of the Tweed is in dire need of upgrade as the area has been neglected for far too long and desperately needs to have its facilities upgraded.

If you have any question about the points that I have raised please feel free to contact me on the details below and I look forward to hearing the results of the draft in the future

Regards

Glenn Swain

Mr Tony Green
General Manager
Tweed Shire Council
tsc@tweed.nsw.gov.au

Dear Mr Green

As a parent of a child with a disability working in the disability sector in the Tweed for the past few years, the first thing I did when I downloaded a copy of the Draft Community Strategic Plan 2017-2027, was search the document for the word 'disability'.

Disappointingly, there were only two results in this search: pg. 31, Attachment 2 - Connections to other plans (link to Federal Plans/Priorities, National Disability Insurance Scheme; and pg. 32, Attachment 3 - NSW Making It Happen (link to State Priorities, SP9 - Transitioning to the National Disability Insurance Scheme).

According to The Australian Bureau of Statistics, in 2009 an estimated 23.7% of the Tweed Shire population identified as having a disability, well over the national average of 18.5%. It is unacceptable that in a 32-page document that will drive the performance of Tweed Shire Council for the next ten years and multiple operational plans, there was no mention of disability in any of the Council's Guiding Principles, Principle Streams, Sub-Streams and Key Services. There was also no reference to the Council's own Access and Inclusion Policy, or Access and Inclusion Plan, or its commissioned Issues Paper and Profile of People with Disability (Tweed Shire), or the Disability Inclusion Act. How can Tweed Shire Council fail to recognise and prioritise nearly one quarter of its own residents? How does the omission of any disability-related goals support the Council's commitment to the principles of universal access and social inclusion?

Further bewilderment is that the Council's own Access and Inclusion Plan failed to inform any of the Community Strategic goals. Why I ask, given that the Access and Inclusion Plan should inform strategic goals? I refer to the Council's Access and Inclusion Plan where the Council states:

5.2 How the Access and Inclusion Plan fits into Council's strategic planning

5.2.1 The Community Strategic Plan

The Community Strategic Plan 2013-2023 is the community's 10-year vision for the Tweed, to protect the qualities that make Tweed Shire a great place to live and to create communities which are strong and well connected. This plan creates a framework to implement Council's four-year Delivery Program and annual Operational Plan, which will align the community's aspirations with the necessary strategy development, planning and resourcing required to achieve the long-term vision and deliver the outcomes.

5.2.2 Access and Inclusion Policy Statement

The Access and Inclusion Policy was adopted by Council in February 2014. The Policy outlines Council's commitment to the principles of universal access and social inclusion. The Policy ensures that planning and decision making follows appropriate standards and guidelines and that Council fulfils responsibilities under state and federal legislation.

Local government is responsible for the provision of services, facilities, programs, planning and regulatory processes. Council has a responsibility to meet commitments under state and federal legislation, and to follow standards and guidelines for universal access and social inclusion. Tweed Shire Council is committed to:

- *The principle of universal access with a broader commitment to access and inclusion for all people who live, work in and visit Tweed Shire*

- *The development of policy and planning processes that incorporate the principles of universal design*
- *Promoting access and inclusion in the community through leadership by example and through the provision of information and advice*
- *Planning, building and maintaining an accessible, inclusive community within the scope of its role and functions*
- *Providing accessible and inclusive services*
- *Providing information and communications in accessible formats*
- *Maintaining workplaces that are accessible and inclusive for staff, trainees, volunteers and students*
- *Achieving these commitments through the implementation of the Access and Inclusion Plan*

5.2.3 Access and Inclusion Plan (2014-2018)

The Tweed Access and Inclusion Plan 2014-2018 (The Plan) is Council's four-year integrated strategic plan designed to integrate with Tweed's long-term Community Strategic Plan 2013-2023. The Plan addresses the many detailed issues affecting access and inclusion now and that need to be addressed over time. The Plan identifies shared solutions and strategic priorities that will help Council to deliver its vision that the Tweed will be recognised for its desirable lifestyle, strong community, unique character and environment and the opportunities its residents enjoy.

I now refer to the Strategic Outcomes of the Access and Inclusion Plan and seek a response from Council as to where in the Draft Community Strategic Plan, the following outcomes have been referenced or integrated in part or wholly, in any of the Guiding Principles, Principle Streams, Sub-Streams and Key Services, or their goals.

- ***Strategic Outcome 1: Organisational Culture Demonstrates Understanding and Commitment to the Principles of Universal Access and Social Inclusion***

- o *The Role of Tweed Shire Council - As an organisation with a leadership role in the community, it is essential that all Tweed Shire Council employees demonstrate understanding of, and commitment to the principles of universal access and social inclusion. This commitment is shown through the actions and behaviour of staff as well as through the infrastructure and services provided. Thinking about planning for an accessible environment and inclusive service provision is a responsibility of all areas of Council linked to the broad range of roles and functions of local government organisations.*

- ***Strategic Outcome 2: Physical Infrastructure and Essential Services are Provided and Maintained in Line with the Principles of Universal Access and Social Inclusion***

- o *Accessible Buildings*
- o *All Access Playgrounds and Parks*
- o *Accessible Public Toilets*
- o *Accessible continuous paths of travel throughout Tweed Shire*
- o *Accessible foreshores and waterways for the purposes of social, leisure and sporting activities*

- ***Strategic Outcome 3: Regulatory Functions and Responsibilities Follow Protocols and Procedures that Include the Principles of Universal Access and Social Inclusion***

- o *Planning for Access*
- o *Footpath Trading*
- o *Guide Dogs and Assistance Animals*

• Strategic Outcome 4: Partnerships and Collaborative Projects Support and Promote the Principles of Universal Access and Social Inclusion

o The Importance of Partnerships

o Changes to legislation, policies, guidelines, strategies and research on universal access and social inclusion are continually changing. Emerging needs of population groups within communities contribute to these changes. Local governments have a key role and responsibility to remain informed and involved in these developments. Promoting social inclusion through community development strategies is an accepted function of Council.

• Strategic Outcome 5: The Principles of Universal Access and Social Inclusion are Promoted Across the Community

o Community Awareness

o Information on Access and Inclusion

o Festivals and Events

o Accessible and Inclusive Tourism

o Arts and Culture

As an advocate for people with disability and an active Tweed resident, I hold grave concerns that by excluding any disability-related goals in this draft plan, people with a disability in the Tweed Shire will be more disadvantaged and vulnerable than ever. The exclusion of any disability-related goals in this draft plan also evidences the Council's failure to demonstrate its responsibility and commitment to the principles of universal access and social inclusion, indicating that the development of its policies and action plans were exclusive and tokenistic. The Council has flagrantly dismissed its very own policy implemented to ensure that planning and decision making follows appropriate standards and guidelines, and that the Council fulfils its responsibilities under state and federal legislation.

Additionally, I question the integrity of the community consultation process in developing the draft plan. With under 2,000 submissions received across the Tweed in response to the Service Planning survey advertised in The Link, this represents only 0.02% of the community responding. Surely this is not an acceptable representation? As a person working with people with a disability, where some of these people are homeless, experiencing intellectual delays, speak little or no English, have no access to or understanding of technology, or are illiterate, I would like to understand how the Council feels it is adequately and fairly providing feedback pathways to those vulnerable and disadvantaged. Where was the involvement of the Council's Equal Access Advisory Committee in representing people with a disability and informing the development of the Community Strategic goals? How are Council's actions an example of universal access and social inclusion?

Saying I am irate and frustrated is an understatement. There are many across this community that give their heart and soul to advocate for their own family, their neighbours and their friends living with disability to ensure a high quality of life free from discrimination and exclusion. Government bodies and agencies are champions of change in our communities, and the total failure of Tweed Shire Council to recognise and include nearly a quarter of its residents in this plan is shameful!

Yours sincerely
Jan Cronly

To be given to Troy Green

THE TWEED OF THE FUTURE: A VISION

The Tweed of the future will be larger and more diverse demographically and in other people-connected ways: politically, economically and socially. We need to start planning now for a community of perhaps 500,000 people, living in and moving about the Shire in any one year by 2050.

The Tweed residential population will have a much larger Asian component than it has currently and it will be much more urban than rural. The transition from a semi-urban/rural and largely European/Anglo-Celtic population will need careful management, if its current, only moderate, degree of social cohesion is to be maintained and, preferably, much enhanced. We have yet to fully integrate the Aboriginal peoples who occupied the Tweed Valley and Coast before we did; the old urban/rural divide is still with us, and earlier settlers are still struggling for acceptance as newer ones arrive on our doorstep, challenging our capacity for adjustment and inclusion.

The Tweed community will need to concentrate on offering a significantly different and much more authentically Australian “sustainably healthy alternative” to its twin city on the Gold Coast. It will need to do this for its relatively permanent Tweed residents as well as for its range of short and long-term transitory inhabitants and tourists, of which there will be many more than at present. Balancing the needs and legitimate demands of these two competing populations will be no easy task.

The Tweed community of the future will have a much larger environmental foot print than at present and this will require a correspondingly higher and more sophisticated degree of environmental management, coupled with related social management. A much more serious endeavour to create a “Tweed learning community” will be called for to balance the interdependent requirements of its people and of its environment.

A strong community is an integrated community. Such a community can only be constructed on the basis of “a civic compact” willingly and knowingly entered into by all its inhabitants and those who seek to live here permanently or for an extended period of time. With increasing numbers, local governance will be much wider in scope but it will also need to be more widely distributed, if it is to remain effective and efficient, or be more so than it is now. Hence the units of governance will be more and smaller with more participatory decision-making and a greatly enhanced degree of direct democracy.

Although we can rely on our configuration of Mountain-Valley-River-Ranges-and-Coast to form the solid physical background to our endeavours, in all other respects these endeavours face a very uncertain future and we need to start preparing ourselves now to meet that future with courage and resilience, depending much more than heretofore on our own resources – of which we have so many in this Valley of ours.

M. Jansen in de Wal

DRAFT COMMUNITY STRATEGIC PLAN;

The opening phrases in this document make up a flowery motherhood type statement.

Your job is not to 'live and love' the tweed but to make it a better place both physically and environmentally

The message from the Mayor is full of rhetoric and not substance.

.Council and Councillors are collectively paid and elected to guide and carry out the duties that are part of running the Shire.

You give us quotes from people who you have consulted with and from those who responded to your survey.

Most of these quotes are backhanded compliments.

You give us a word map full of random words that could have come from anywhere. To serve what purpose?

ASSETT PROTECTION>

You state --"Capture and convey rainfall runoff back into the environment and manage the risk of flooding"--

Given that most of the Tweed Valley is flood plain -- where is this this water supposed to be placed ?

UTILITY SERVICES;

Would it not be better lobbying the State Govt to reduce waste charges to a level that is affordable , instead of sending recyclables to Qld . Also where waste service charges are less than here.. Think of the employment opportunities that could be developed around the tip area.

BUILT ENVIROMENT;

Streamline Development Applications to an acceptable time frame.

There is no mention of physical development of the Tweed Shire in this 10 year plan, only thoughts that we should "love the Tweed." Well the Tweed can't live on love.

Let's have a definitive plan --for example; road access, widening of Tweed Coast Road to four lanes to serve the thousands of residents who will be migrating there in the time frame of this document, upgrading of Fraser Drive and connecting to South Tweed via Kirkwood Road. Also stop Councils fixation with Knox Park which is a bottomless pit.

To me this document is about feeding a bureaucracy not about the physical needs of the Shire to make it a better place to live over the next ten years and on. This is possibly the worst presented document I have seen from TSC.

Covered by explanation

John Sweeney
[Redacted signature]

Dear Meredith,

I could not find where I might lodge 'my say' re: Tweed's Strategic 10 year Plan so I would appreciate if you could forward my comments to whom it may concern... Thanks.

I have reviewed the draft community strategic plan and find a major problem in the mission itself: 'manage **growth** sustainably'.

As always, there is this never-questioned assumption that Tweed has to grow. I think much of the charm of this area has already been eroded by such a goal, direction and attitude. Growth means that natural bushland is eliminated and wildlife is directly compromised/lost. Just the fact that Tweed has endangered Koalas these days says it all- yet council continues to allow developers to clear large land tracts and BUILD BUILD BUILD.

This does not benefit tweed residents- just the OPPOSITE. First of all, the ageing population means that they'll be more jobs available for young people to replace those retiring. Also, a good and productive economy is not based on the sheer number of workers. In fact, with technology and automation, there is likely to be LESS jobs so growing the population is actually *counterproductive*.

Another negative: as the number of buildings grow and their heights increase, the views and sunlight are robbed from parklands and beaches. How is that an improvement for local residents (or visitors)?

One clear example that growth is not the problem is Central tweed heads which has been in a continuing sorry state for 20 years. Apart from Tweed Mall- it is fairly dreary. As you probably know, several of the main occupants are adult shops; I'm no prude but this does put a damper on attracting other businesses. Central tweed heads has never been a place us locals tend to go to dine or shop when Coolangatta is just as close and, in general, offers considerably nicer options. With some lovely architecture, Bay street could be made to be very charming district and have assorted nice shops and dining options. Again, this is not a growth issue- it's simply having a bit of innovation and creativity and council could lead the way in this (tax incentives for the right developer(s), perhaps?

Other areas of Tweed heads are just as sad. The area along Tweed river that some years ago had much land for sale was taken over by several car dealerships. With any forethought- council could have built the new library and public spaces there with lovely river views.

Tweed heads and the Tweed in general is a beautiful place. 'Sustained' growth though still means growth and less natural land, more traffic and congestion- none of which I view as positives.

I think Tweed's mission itself should be re-thought. We need to preserve what is great about this area by minimising building in new areas and beautify existing structures.

Additionally, I did not note anything in the plan that will attempt to address the many cross border issues that exist: ie, emergency services, transport problems, other border sharing issues (such as the loss of reciprocal library privileges with the Gold Coast that disappeared some years ago for example), and of course the time problems, etc. Many of us who keep QLD time are frequently disturbed at 6am in the morning (versus 7am) as the street cleaners, tree trimmers, construction workers, etc start their day. With any consideration/ council guidelines/rules, at least the first 2 just mentioned could start later on the border areas! And then there's the matter of general fairness- living mere meters over the border always seems to cost us Tweed residents WAY more- ie for stamp duty when buying a house as well as for many other assorted additional costs and fees. We're part of the 'twin cities' , yet tweed ALWAYS seems to get the raw end of the deals.

Lastly - and not sure where this would be added- but as I wrote to council a few months ago there is a problem with lack of candidate information at voting time. Last October, Tweed voters were required to vote yet there was NO INFO out there on the candidates for voters to be able to make informed decisions. Basic council procedures need to offer voters information on all candidates otherwise elections are based on mere name recognition and/or by blind party politics. That's definitely not good enough. Prior to any council elections, council needs to require candidates to lodge their views via council website/ offices so voters can actually make informed choices.

OK, thanks for your consideration on these assorted issues.

Sincerely,
Leslie Sonnenschein

Hi Troy

Thanks for the opportunity to have my say on the Draft Community Strategic Plan 2017-2027.

I would like to see *Collaborator* next to Councils Role in the Strategy/Action below (p19) and the wording amended from:

- Provide rubbish collection, disposal and recycling services which maximise the diversion of rubbish from landfill

to

- Provide resource recovery, collection, reuse and recycling services to maximise the diversion of resources from landfill

With a strong global movement to circular economy business models, it would be worthwhile having Council playing a collaborative role in such things as recovery and collection including industrial symbiosis and developing/supporting digital technology to create new relationships and business opportunities for consumers, companies and micro-entrepreneurs to rent, share, swap or lend idle goods.

I believe we need to move away from the word rubbish.

Many thanks

Lisa Flower

Waste To Resource

W: www.wastetoresource.com.au



DRAFT COMMUNITY STRATEGIC PLAN

Submission by Menkit Prince

Noting the preamble statements, very nice principles but I see evidence that council is not always implementing the theory into practice. For example:-

‘We look after people and our places.’

What about the homeless? I don't see any evidence of helping them with housing. Council could assist with lease of land for a community group to build a Tiny House Village. And there is barely a dent in affordable housing been made by council compared to the growing need for affordable housing. It is reaching crisis proportions as local newspapers have been reporting. This is especially difficult for senior citizens who make up 44% of the population and who can find themselves homeless and in crisis not necessarily because of addiction but because of housing shortage itself.

As for **Caring about our places** let me share a small example. Right there in the heart of Murwillumbah is the most disgraceful pond at Knox Park that has been so badly neglected. A council officer told me recently that staff at NRM think it looks great. Well, nobody in the community would agree with that view. The fountain appears only to be on at lunch time and even then is clogged up with weeds and barely operational. I called council a few years ago and referred them to a local specialist (Soil Life Group) who would give advice about how to create an ideal environment that would not encourage out-of-control weeds and lillies. Nothing was done and once again the pond is back to being full of lillies, weeds and mud. What do our tourists think of a town with a pond like this in Murwillumbah's biggest park? You certainly don't see anything like this in other cities. How is this enhancing our natural assets?

Leaving a Legacy: Looking out for future generations –

Biodiversity Management and Ensuring sustainability of our natural environment

With the 2nd most biodiverse region in Australia what exactly is council doing to protect our native animals?

- Where are all the culverts under the road to help animals cross the road?
- Does council even have data on where all the roadkill hotspots are? The truck you send around to pick up roadkill could be recording the type of animal, the date and how many to help ascertain this. From there, considerations of what to do could be addressed. Some animals only need rope crossings. How hard is that? Apparently too hard for NRM as to my knowledge there is not a single rope crossing in Tweed Shire.
- More education of the public regarding the incredible ecosystem services of flying foxes is needed. Without flying foxes we would have no rainforests, no eucalypts, melaleucas, and about 1/3 of all our cultivated fruit. Instead of responding to the public whinging about the odour and noise of a flying fox colony, council should be helping people mitigate impacts instead of moving the bats on as a kneejerk reaction to residential complaints.

- Since a lot of wildlife is killed by domestic dogs and cats, why isn't council adopting a mandatory requirement of all cat and dog owners to enclose their pets like they do in Logan shire? I was told there are only 4 council rangers and they would not be able to police this. If that is the case then why not hire more rangers? Many jobs could be created for people willing to build cat and dog enclosures. For a dog only an escape-proof fence with a lockable gate around the house is required. Cats are a bit more complicated but with a bit of ingenuity solutions can be implemented. Many examples of cat enclosures are online.
- It's time to find a less toxic alternative to 1080 to kill wild dogs. We know that 1080 kills native animals and then when another animal eats that poisoned animal they also die and so it continues. Death by 1080 is particularly cruel and it's not a quick death. 1080 is extremely inhumane.
- Council needs to trial another method of dealing with roadside weeds such as what Byron Bay shire council is doing with steam. Many rural roads are near creeks and when roadside weeds are sprayed glyphosate can seep into groundwater and end up in creeks where it kills frogs. When glyphosate is airborne via sprays it also impacts birds in nearby trees since glyphosate persists for up to 100 days. The EU has banned glyphosate especially in public places and the World Health Organisation says it is probably a carcinogen. So why is Australia still using it?
- Why is council not overhauling Private Native Forestry Agreements in rural areas? Landowners with such an agreement in place can log anything even old growth, koala trees etc with no monitoring. This is where most of our wildlife lives yet their homes are being bulldozed faster than they can regrow.
- With coastal koalas listed as Endangered it is appalling that council STILL does not read or appear to understand studies saying that human-caused noise and disturbance impacts koalas and contributes to stress-related chlamydia. At Black Rocks, the only koala cell of three cells on the coast with any 'stability' or most chance of recovery, council has consistently turned a blind eye to the human disturbance at the sports field (noisy trail bikes, paramotoring, petrol-fuelled model aeroplanes, industrial council mowing and brush cutting) right by koala breeding area. While council has been informed of 5 koalas dying of chlamydia at Black Rocks in the last 3 years still it does absolutely nothing to find out why. The Koala Plan of Management was sadly lacking in any meaningful assertive action that had a chance to recover this population. How shameful that Tweed Shire Council has failed to stop koala decline.
- At Black Rocks sports field there is also a major problem with threatened eastern osprey whose nest is the only naturally occurring one in the shire. There was no evidence of any chicks surviving last year due to flying of petrol-fuelled model aeroplanes at the sports field that were flying close to their nest. The year before one chick was found dead at the base of the tree. What is council doing to protect these osprey? Nothing.
- Also at Black Rocks are threatened bush-stone curlew who are ground dwelling birds. Because people at the Black Rocks by the Sea Estate keep cats (against the estate rules) these cats wander into the koala habitat where they can kill all the bush-stone curlew. Yet council refused to even put up a warning sign at the entrance to the Estate. Where is biodiversity management at work here?

Water Supply

Water is life. Council could be protecting our future generation's supply of water by doing the following things:-

- Mandating water-saving options for all new housing developments (Kings Forest, Cobaki, Dunloe Park, Terranora etc) such as rainwater tanks, water reticulation, water recycling, stormwater reticulation, composting toilets etc.
- Not approving any more commercial groundwater extraction licences. These licences are not metered. How do we know how much water is being extracted and if these licences keep growing we could be hurtling towards a precipice where creeks and bores dry up irreversibly.
- If the above were implemented we will never need a dam at Byrrill Creek which would destroy the homes of 46 threatened species, one of which is the iconic koala.
- Council should cease adding fluoride to the drinking water. Most developed countries do not add fluoride to their water as fluoride is an endocrine disruptor that can affect your bones, brain, thyroid gland, pineal gland and even your blood sugar levels. There have been over 34 human studies and 100 animal studies linking fluoride to brain damage,³ including lower IQ in children, and studies have shown that fluoride toxicity can lead to a wide variety of health problems. Swallowing fluoride provides little value to teeth. In the same way as fluoride is harmful to humans it is also harmful to wildlife or animals who drink it.

The Built Environment – Infrastructure to provide local growth

Mobile phone towers should be replaced by ADSL copper fibre as copper is faster, more reliable and does not have the harmful microwave frequencies of mobile phone towers that contribute to cancer and immune system collapse, insomnia and a whole raft of symptoms that are becoming well known around the world.

Council Leadership + Transparency

- I'd like to see videotaping of council meetings so that residents can see the proceedings without having to leave the comfort of their homes.
- Councillors should not be provided alcohol in the dinner break if they are to make responsible decisions after the break. Drinking on the job is unacceptable.

Thank you for allowing my participation and I sincerely hope you take on board some of my suggestions.

Sincerely,

Menkit Prince

Suggested Additions to the Draft Community Strategic Plan

1.1 Natural Resource Management

Ensuring long-term water security and provide effective flood mitigation (not relying on just one storage facility for the Shire's increasing population).

Develop and apply a shire-wide flying fox camp management plan.

2.1 Built Environment

Resist the urge to emulate the high rise mentality of Gold Coast developers.

Promote the benefits of having a low to medium rise building strategy.

Protect the natural skyline of the shire from inappropriate and obtrusive hilltop developments.

2.2 Engagement

Establish a Youth Council in the Shire to advise councillors and council staff on the needs of young people.

Encourage residents who live adjacent to the Shire's parks and reserves to set up community advisory committees.

3.1 People

Expand the existing health services and in particular expand the services of the two major public hospitals in Tweed Heads and Murwillumbah.

Restore the community-run Women's Health Service and Women's Refuge in Murwillumbah.

Promote the Indigenous heritage of the Tweed and encourage Indigenous people to be active participants in maintaining this heritage.

Promote youth employment in the shire and provide suitable educational and training opportunities for those young people who drop out of the formal education system

Promote the shire as an RV-friendly location.

Increase funding for tourist promotion through Destination Tweed.

3.2 Places

Provide high quality public performance spaces in locations such as Murwillumbah and Pottsville.

Provide financial support and help to promote cultural activities already existing such as the Murwillumbah Performing Arts Festival, Tyalgum Music Festival, Foodie Fest, Night markets at Kingscliff, Wintersun and the Murwillumbah Country Roots Festival.

3.3 Moving around

Promote and enable construction of light rail services between Tweed Heads, Murwillumbah and Byron Bay and along the Tweed Coast to Pottsville.

Ensure that bus services are available 24/7 between major population centres in the shire, especially to cater for the needs of the young and the elderly.

Provide walking paths and bike trails along the banks of the Tweed River.

Dr Neville Jennings and Dr Leonie Jennings



February 15, 2017

To: Troy Green,
General Manager
Tweed Shire Council

**Submission regarding the Draft Community Strategic Plan (DCSP)
by Nola Firth**

I am a new resident in the shire, having arrived from Victoria in March 2016. I chose to come to live in the Tweed Shire out of many other possible destinations within Australia. I came because the Tweed is a unique place within a wondrous caldera formation fringed by World Heritage National Parks.

Since arriving I have realised that most people here love the natural beauty that surrounds us and are willing to work to both keep it and restore some of what has been lost. Many, like myself, are aware this is one of the few precious places left in Australia where the natural environment is so richly biodiverse. I live on Hospital Hill in Murwillumbah and although this is in the centre of town I have, to my delight, counted eighteen varieties of birds.

I am encouraged by the current work and future planning for the shire. Bush regeneration is much more prevalent here than in Victoria and I know that significant Council resources are devoted to this and other natural environment sustainability and restoration issues. I happily note also that the DCSP refers to issues such as sustainability, protection of the natural environment, recycling, and reduction of greenhouse gas. However this area has a chance to remain what will be an increasingly precious environmental 'hot spot' places in Australia so I want to make two further suggestions with regard to strengthening this aspect of the DCSP.

1. Tweed as a Biodiversity Region: Underpinning values of sustainable management and natural environmental

I would like to see the inclusion in the Plan of an aim for the region to become a Biodiversity Region in the near future. Such an approach calls for the interplay of all aspects of life with sustainability for the environment. Submission for registration as Biodiversity Region (which I am aware has begun) should be an early target of the Plan. I would like to also see underpinning values of sustainable management and natural environmental restoration more broadly embedded into the document eg: in natural resource management 1.1, asset protection (1.2) built environment (2.1) and places (3.2).

2. Use of specific targets

Specific targets can be a measure of exactly what has or has not been achieved over the ten year plan. To be useful there needs to be a systematic, accessible accounting process for reporting this to the community. There are some specific targets included in the Plan but more need to include a way of being measured (e.g. in 1.1 the increase in areas of land and waterways under active

management needs a precise measure). Other specific targets are also needed. These include the following:

- a) Preservation and improvement of water quality and health of the rivers and creeks. In particular there needs to be a plan to remove sewerage run off from entering creeks and rivers. A ten year plan target may be to process sewage such that it becomes drinking water (as occurs in the Goulburn Valley, see <https://www.choice.com.au/food-and-drink/drinks/water/articles/recycled-drinking-water>).
- b) Carbon emissions. Other nearby shires, such as Lismore, already have such targets. Ours should be zero by at least 2030.
- c) Removal of plastic packaging by 90% of all businesses.
- d) Coal seam gas. There needs to be a specific statement to the effect that coal seam gas will not be mined in the Shire.

Thank you for this opportunity to comment on the DCSP. I am looking forward to living in the shire.

Regards

Nola Firth

A handwritten signature in black ink, appearing to read 'Nola Firth', written in a cursive style.

NEW SOUTH WALES CANE GROWERS'
ASSOCIATION
TWEED RIVER BRANCH

A.B.N. 90 242 496 047

DISTRICT SECRETARY – D. J. IRBY
P O BOX 675, MURWILLUMBAH, NSW, 2484

24th February, 2017

Mr Troy Green,
General Manager,
Tweed Shire Council.

Re: Draft Community Strategic Plan 2017-2027

Dear Sir,

Tweed Canegrowers Association has reviewed the above document and would like to submit the following for consideration when developing the final Strategic Plan.

The sugar industry provides a visual amenity to the floodplain and exhibits a unique vista to the landscape. We feel it is an asset to the Tweed Shire that should be preserved.

Economic Effect of the Sugar Industry:

Sugar production directly brings approximately \$40 million into the Tweed Shire annually. In addition fallow crops such as soybean bring additional income in excess of \$1 million. With the multiplier effect this value is substantially increased when you consider the support services provided by a number of businesses based in the Tweed Shire including the Condong Sugar Mill. Including mill staff the industry employs several hundred people directly and provides employment for a considerable number of others indirectly.

Natural Resource Management:

The Tweed sugar industry is recognised as a world leader in acid sulphate management and environmentally sustainable agriculture. The Tweed industry is one of the cheapest producers of sugar with productivity among the best in the world because of high rainfall and quality soil types.

Practices developed and research done over the past 25 years on cane farms within the Tweed Shire have established world best practice for the management of acid sulphate soils in agriculture around the world. The results of this research have been published as follows; Melville, M.D., White, I., Quirk, R.G. (2016), Acid Sulphate Soils Management and appears in The Encyclopedia of Soil Science, Third Edition (Taylor and Francis, New York)

Recent research has disclosed that sugar cane captures 9 tonne of carbon per hectare per annum as opposed to wetlands which captures only 2 tonnes. Methane is 1000 times worse than Carbon Dioxide.

NEW SOUTH WALES CANE GROWERS'
ASSOCIATION
TWEED RIVER BRANCH

A.B.N. 90 242 496 047

DISTRICT SECRETARY – D. J. IRBY
P O BOX 675, MURWILLUMBAH, NSW, 2484

Sugar cane is a methane sink, wetlands are an emitter. Technical papers supporting this research are to be presented to an Australian Society of Sugar Cane Technologists Conference in May 2017.

Asset Protection:

Floodplain Management;

Vital concern to the industry is floodplain management. Councils continued involvement in maintenance and funding of drainage and levee systems to improve the egress of flood waters is of a high priority.

Unless there is a continuing improvement and upgrading of these infrastructures as residential development and roadworks increases in urban and rural areas, flood water will be slower to recede causing an increasingly significant reduction in crop yields and financial losses. Without improved flood and drainage infrastructure the viability of the sugar industry is threatened.

Flood risk is the major constraint on sugar production on the Tweed Shire floodplains. We request that agricultural land be included in any modelling done on behalf of The Flood Risk Management Committee to allow for better infrastructure planning.

Tweed Shire Council needs to consider favourably adequate drainage to the floodplain and flood management as part of its coastal management reforms. We request that Tweed Shire Council consults with the sugar industry as part of the Coastal Reform Legislation process.

Utility Services:

Consultation is needed with the sugar industry with regard infrastructure changes involving cane land and drainage systems.

We look forward to consulting further with Tweed Shire Council on the Community Strategic Plan in due course.

R.H. Hawken,
Chairman, Tweed Branch,
N.S.W. Canegrowers

Per D.J. Irby,
Secretary.

Comments to the Draft Community Strategic Plan

Dear Mr Green,

Thankyou for the opportunity to provide feedback on the planning document designed to guide Councils future direction for the next 10 years. We appreciate the changes to the document to make it more accessible and understandable by the community as compared to previous years.

1.1 Natural resource management:

Protection of our natural assets is a high priority for our residents, eg protection of coastal dunes and creek banks and providing the safest ways to access and enjoy them. Please consider amending the target to include "increase in the areas of bushland, dunes and waterways under active management" instead of simply increasing " areas of land or waterways under active management " as this is less ambiguous.

2:1 Built Environment

The concern regarding housing availability is effected strongly in our area by the use of many types of accommodation for holiday let's rather than homes. A more effective target to combat this may be to increase housing availability rather than housing supply.

2.2 Engagement

The target to resolve 60% of council related enquiries at first contact is questioned. Our experience with this procedure has meant we were not transferred to relevant officers and were instead advised to put any request in writing, this response allowed TSC to fulfil their goals for service provision but did not resolve the enquiry and certainly contributed to the experience of not feeling heard.

The target under this heading to increase the number of people volunteering within Tweed is essentially out of Council 's control. Perhaps a better target to measure engagement may be to increase attendance at public education workshops or increased use of the Have Your Say facility on councils website.

3.1 People

The target to reduce overweight and obesity rates in the Shire is again, not in the control of Council. The goal to enable healthy communities may be better met by a target of increased participation in usage of recreational areas in the Shire. The more accessible the recreational areas are and the better matched to the needs of the community, the better participation rates Council will have.

The goal to have safer and more inclusive communities under this heading would also be served well with a target to improve footpath repairs and lighting.

3.2 Places

The target to increase occupancy at Council owned holiday parks would seem a very self serving target and is not fulfilling the stated goal of providing places to visit and play, the target should be to increase tourist numbers to the Shire, not increase the occupancy of a specific business.

Similarly the target to increase use of sporting and recreational facilities may better address the goal by changing it to "increase the usability of sporting and recreational facilities ".

3.3 Moving Around

A target to increase footpath and cycleway connectivity needs to be included in this section.

A target to maintain roads at a certain rate of renewal would be appreciated. The coast road from Pottsville school to the Pottsville Beach Sports club is in need of repair.

It is difficult to see where community aspirations of the maintenance of public assets to a high standard is captured in this document eg Maintenance of Seabreeze pond and Ambrose Brown Kiosk are specific examples to which there does not seem to be a relevant general target.

The issue of accessibility to our natural areas such as carparking near beaches, well maintained pathways to our beaches and estuaries is also of very high importance to our community.

Please consider these comments in the compilation of the final Strategic Plan.

Regards

Chris Cherry
President
Pottsville Community Association

24th February 2017

Draft Community Strategic Plan
The General Manager
Tweed Shire Council
PO Box 816
Murwillumbah
NSW 2484

Dear Sir,

Re Draft – 2017/2027 Community Strategic Plan “Living and Loving the Tweed”

I wish to make the following submission in regards to the above Community Strategic Plan.

Background

In your letter to me dated 18th January 2017, you have advised that the purpose of this plan is to identify the community’s main purpose and aspirations for the future and plan actions to achieve them.

You have further advised that Council has listened to the community and is finding a balance between supporting a vibrant, prosperous, community life and protecting our much loved environment.

Council and other partners such as State agencies, the business sector and community groups are to have a role in delivering the Tweed community’s long-term goals.

Submission

I would request consider the following aspirations in regards to the above plan:

A much loved Environment

Climate change

Real planning, taking into account global warming and sea level rise should be considered, as most of council’s water delivery and sewage treatment infrastructure could be subject to the threat of inundation with sea level rise.

Unless there is success in mitigating global warming, it will be very difficult to have resilient living in a community affected by heat stress, putting restrictions on outdoor work and recreation including tourism and with increased storms, reduced water supply and sea level rise in the coastal areas of the Tweed Coast.

My Comment

A reduced water supply would require council to improve water security and not continue to dump and waste 94% of its treated sewage waste water. A plan to reuse more grey water on new green-field subdivisions would also assist in this demand water management.

The Natural Environment

There is evidence that the natural and built systems are under severe strain.

Currently and in the past, environmental offsets for lost habitat have been transferred to areas outside of this shire, if at all. There is a need for council to remedy this situation and utilize the value of these offsets within the Tweed Shire.

I request that council undertakes studies to identify the current status of the impact of the built environment on the natural environment and existing infrastructure to determine an ecologically sustainable carrying capacity and keep growth within that carrying capacity before irreparable damage has been reached.

Loss of habitat through 'poor' past council planning has seen the loss of threatened species such as the common Planigale (near the Gold Coast Airport), the Cobaki Lakes Long nosed Potoroo and a substantial drop in the population of the Tweed Coast koala, reported as 144 in 2011 but now an even less koala population that is viable.

My Comment

There is much support in the wildlife community that when a koala population in the wild become remnant, in an area such as the Tweed Coast, consideration should be taken to save the remnant koala population from extinction.

Protective and fenced koala sanctuaries in existing habitable areas of the Tweed Coast are recommended to council.

Areas of suitable habitat exist at council's environmental precinct at Pottsville and at the koala block at West Tweed Heads

It is recommended that Council seeks to provide immediate funding to retain the remnant Tweed Coast koala population, for the future enjoyment of Tweed residents and tourists.

Community Life in Tweed

Provision for cultural buildings

There is much conversation in populous Tweed Heads, that while Murwillumbah has several museums and a public art gallery, there is a lack of provision for similar cultural interests for Tweed Heads residents and tourists. The transfer of the Tweed River Museum to Murwillumbah is an example of how the Tweed Shire Council currently considers the requirements of our growing regional city.

Rubbish Disposal

In this matter, the present council arrangement for Tweed residents and business needs to be improved with the installation of a local rubbish transfer station and an area that provides for the storage of cut vegetation. Transferring rubbish to distant Councils Stott's Creek waste facility is unsustainable being inconvenient, time-consuming and fuel costly to Tweed Heads residents and small business.

For years there has been land available at Tweed Heads for such a use (Lot 319 Reserve 59360, 37.5ha, neighbouring the Gold Coast Airport). The subject land has been leased by the NSW Government to The Gold Coast Airport for a reported annual rental of \$130,000.

Maintenance of council parks, boardwalks

The 8 month continued closure of the Tweed Heads Boardwalk at the Anchorage Island is one instance where council has failed in its annual maintenance of boardwalks which has resulted in the loss of a much loved circuit and educational walking experience around the Anchorage Island.

Other local boardwalks in the Lower Tweed Estuary show similar signs of neglect.

With elderly residents and tourists always seeking a pleasant walking experience for health and enjoyment there is a woeful lack of suitable walking trail literature at Council's tourism centre.

There is also the need for elderly residents to have seating available at destinations, where there is a scenic view on walking trails.

Prosperous Tweed

Of recent concern to Tweed residents, was a commercial proposal, encouraged by council to allow a water fun park in our Tweed Heads Regional Park at Jack Evans Boat Harbour.

After considerable community protest, council did not proceed with this proposal.

Our community still awaits a plan of management for the Jack Evans Boat Harbour.

This raises the Question:

Is there a need for fun park zone in the Tweed Shire, similar to that provided by the Gold Coast City Council?

Cobaki Lakes residential development

The Planning of the 5500 lot Cobaki Lakes residential development was approved by Tweed Shire Council in 1992. Still no lots have been sold.

It is claimed that the provision of water and sewage services is one reason for the absence of sales for this slow development.

If land had been sold, the construction of buildings could have added to our local economy.

In this instance, the developer offered to provide on-site sewage and water provision, which council rejected. The subsequent and successful 10,000 homes, Olympic Park housing project in Sydney had a similar water treatment project that has won many awards.

Is it too late for council to improve other major developments now under construction and to apply the successful experience learned from the Olympic Park housing project?

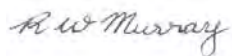
Prosperity

There is a need to encourage renewable and sustainability industries. Instead of depending on the construction industry, there is insufficient investment in industries, providing sustainable products and services, research and development and world class digital technology.

I request that council considers this submission and trusts that the draft Strategy examines the full range of possibilities to make 'Living and Loving the Tweed', a continuing reality.

I note that in your letter of 16th January and on the internet, the Plan will be on exhibition until 25 February 2017 and public submissions must be received by close of business on that day.

Yours sincerely



Richard W Murray

Hello,

I met with TSC reps at Pottsville markets recently and filled in a form, but haven't heard back as yet, so thought I would follow up with my suggestions.

My name is Rosanda Watson and I am a ratepayer in Pottsville.

My suggestion/request is for a fenced off leash exercise area to be set up in Pottsville. The exercise areas on the beach are a lovely way to run dogs but unfortunately there are many members of the public unable to use them. People such as the elderly, disabled and those that cannot generally gain access to the slightly remote locations. Also the majority of local people have small dogs which they are not willing or able to take on the beach.

We moved 3 years ago from Brisbane where the fenced off leash exercise parks have shown us how simply wonderful they are for humans and canines. A fenced off leash exercise area assists owners to improve dog behaviour and allows those members of the community that are isolated to have contact. The social benefits for humans and pooches provides a community where people can meet, greet and learn how others have overcome anti-social behaviours. Dog training is a very important but doesn't seem to have reached many in the community. In our experience the peer support in an exercise area can assist those whose animals are frightened and help the humans who are lonely and just seeking contact with another person.

Our dog is large and is constantly on the receiving end of fear aggression from many small to medium dogs. For the first two years he just ignored it, but we find over time he is now defensive which is a sad consequence of the lack of areas where domestic pets can interact in a safe environment. The dog beach is a nice place to run a dog, but we would dearly like to see an area where all locals and visitors could access safely.

On the weekend there was 8 dogs off leash running around on the creek area near Ambrose Brown park. We were the only responsible owners with our dog on a leash and it just reminded us how we need to move forward to educate those in our community and visitors on the best possible way to exercise their pets.

The area would need to be fenced, have parking access, water, a bin for rubbish and dog poo bags. Ideally a couple of benches/seats and shade for those such as the elderly.

I would be very pleased to chat further with TSC on this and thank you for your time.

Kind Regards
Rose Watson.

I

The Tweed Shire Council does a great job with rates we pay through out the shire, but not a great amount has come to Pottsville, so please remember us in the 2017-2027 draft for community strategies.

Black Rocks Sports Field.

In 2013 the first bad thing the Tweed Shire Council did was to reject an application to construct eight tennis courts with night lights at Black Rocks Sports Field. The T.S Council went against the recommendation of Council Staff, who had determined there would be no impact on the Koalas. You can have lights that would not disturb the Koalas as they have been found at Muswillumbah. It wouldn't worry the Koalas as there are Koalas watching the tennis players where they are now at night.

Now the Tweed Shire Council do not want the men's shed on the Black Rock Sports ground. All this has got to stop and common sense be used. The Tweed Shire Council does not seem to want anything for Pottsville. We missed out in getting a youth centre in 2007 for our youth, as Council did not help us get the land to put it on after, everyone was organised with grants, plans drawn up, donations and helpers to run it etc. It would have helped get the young people off the streets. I hope the Tweed Shire Council will support

2. the Cabarita Youth Service as they are doing a good job and are helping the youth in Cabarita and Pottsville.

after letting the men's shed go to the Black Sports Field the Tweed Shire Council could plan for the future, to bring the field up to standard, so sport could again be played on the field - some sports such as Cricket, Athletics, Hockey, Netball, etc. could be played there. In 2002 Cr. Polglase said the Council had made commitment to sporting facilities - nothing has happened here in Pottsville.

Please do not let trees be planted on the Black Rock Sports Ground - it has never had trees on it as it was a cow paddock.

while on the subject on youths please make plans for the future for our young people as there is nothing here. A skate park, swimming pool (which we need to teach the children how to swim after all the drownings this summer) Basketball courts, Roller skate place - a place with the skate Park & something with mounds that bikes can be ridden on etc.

Back in 2005 the Tweed Shire Council said they had a masterplan for Pottsville for Ambrose Brown Park, (which you did a great job on) and Hardey Park, which we


3.

are still waiting for something to be done. It needs to be made attractive for all locals and visitors that come here as you can see by my photos. The table and seats that the Lions Club donated and the Shire put in are a start, but more table and seats need to be put in especially at the park (if you call it that) at the end of Buckingham Drive as we have nothing there and lots of people all summer and ^{and other times too.} also we need toilets somewhere along the creek, as we do not have any only at Ambrose Brown Park and the Jerris Courts. I also think we need bollards in Hardy Park to keep law and order with the parking.

In 1998 a plan was drawn up, because of Pottsville's forecast population growth to have a road right through to Coronation Avenue, behind the shops and houses as a proposal for the future. In 2004 the Community voted on a plan for a road to go behind the shops and houses (as the Tweed Shire Council asked us to do) then told us there was not any money to do. In 2010 the by pass road was included in the Pottsville Locality Plan, but nothing

7. happened. we were thankful that the road
or lane as you call it was put in with
the help of all shop owners. Now it is
time to finish the job and plan to take
the road right through behind the houses.
It has been a help having Berkleys Lane
open to go around the back and that opening
near I.G.A closed. But we still having trouble
with semi-trailers driving along Coronation
Avenue, as one day 2 semi-trailers were driving
in opposite directions outside I.G.A. (and there were
cars parked on either side of the Avenue) and
they could not pass one another so one had
to back into Elizabeth Street. One day I had
parked in Berkleys Lane as I had been
shopping and it took me nearly 15 minutes
to drive onto Coronation Avenue, because of
all the traffic - I was doing a left hand
turn. This happens quite often.

yours faithfully,
(Mrs) Shirley Gill



Art gallery. - a wonderful place
but I think it is time to start
charging to go in, and not let the
Rate Payers do all the paying
Industrial Area to create jobs

Dogs we need a fenced off
leash dog park to made
available in Pottsville - works well
in other places.

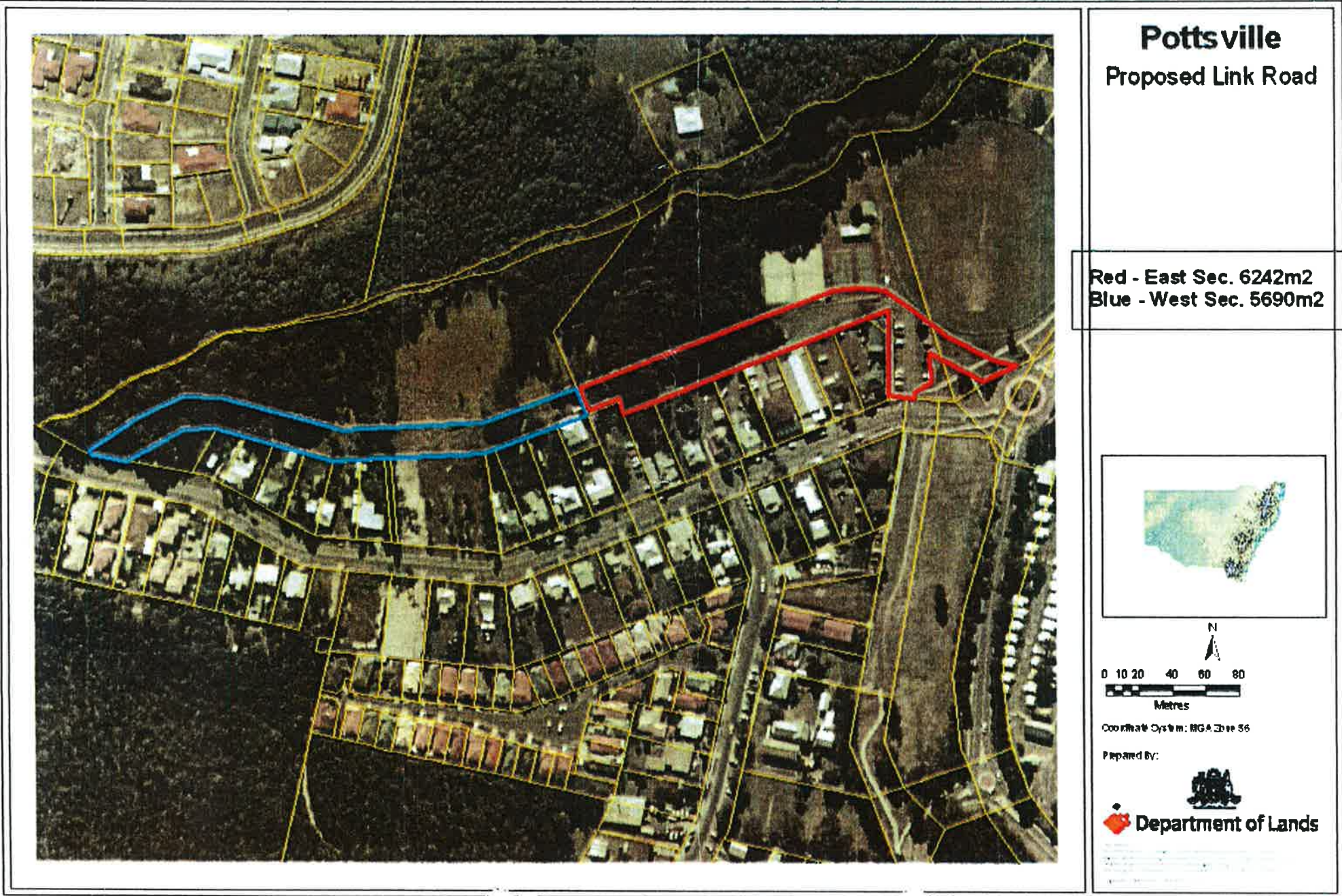
Byrill Creek Dam.

Needs to be built for the future
Council needs to look at future.

Sewage at Round Mountain

It was reported in 2009 the sewage
capacity for the area was causing
breakdowns and pump failures and
so many houses have been built
since then.

Figure X





Australia Day 2017 on the Moobal
Creek Pottsville - Kandy Park

32117
MOOBAL CREEK
POTTSVILLE
NSW 2325
AUSTRALIA



Australia Day - Mooball Creek
2017 Pottsville



Australia Day - Macaball Creek
2017 Pottsville

15 JUN 2017 14:00:00
41119



Australia Day 2017 on MacCall
Creek Pottsville

2017-09-25 14:00:00



Australia Day - Inwood Creek
2017 Pottsville

SPRINGFIELD NSW
2017 2:20:00 PM
2017 2:20:00 PM



Australia Day Macball Creek at
2017 the End of Bucking Ram &
Pottsville

100 200 300 400 500 600 700 800 900 1000



Australia Day 2017 - Macball Creek at
the end of Buckingham St
Pottsville

NO. 41125
© 2008
PHOTOGRAPHY



Australia Day 2017 - mobball
creek at the end of
Buckingham Drive Pottsville

© 2017 Pottsville
Australia Day 2017

Draft Community Strategic Plan Submission

Team Koala fully supports the goals laid out on page 15 of the Draft Plan for the protection and management of the environment and natural beauty of the Tweed.

Cumulatively the men and women on the Team Koala Committee represent a couple of hundred years of residence in the Tweed Shire. The Committee is unanimous in its support of generational equity to ensure that future residents of the Tweed have the opportunity to enjoy the beauty and amenity that is so evident at present.

Team Koala intends to continue its work of education and increasing public awareness of the Tweed Coast Koalas, which have been officially designated as endangered, to ensure their survival.

Team Koala will continue with an education program at local schools and its members will also support the Koala food trees planting days on the Coast. Team Koala will always welcome information and updates on Koala projects and activities from the Tweed Shire Council for dissemination to its members. Team Koala believes that if the public is kept well informed then the Koalas are less likely to suffer attrition through neglect and indifference.

In relation to the environmental goals set out in the Plan, Team Koala would like the following points to be considered.

- 1) Team Koala would recommend that appropriate policies are put in place to control feral animals as well as ensuring responsible cat and dog ownership is monitored and rules observed and enforced if required.
- 2) That the current signage advising motorists that Koalas are present be maintained and extended if required.
- 3) When a bushfire occurs in a Koala sensitive area, or any place in the Shire, appropriate resources, including water bombing aircraft, are quickly deployed.

4) The approval of future housing development should always consider the impact on the Koala population. Council consent conditions, for any development, must be adhered to and not weakened by the carrying out of unauthorized works. Where work is carried out which is contrary to the consent conditions, financial penalties imposed should be substantial so that the developer cannot easily absorb the penalty as a development cost.

5) Where land, public or private, is designated as Environmental Protection, Council must be proactive in ensuring that the land is not degraded by the invasion of exotic and noxious fauna and flora. Especially in the case of private land classified as Environmental Protection where some land holders allow the degradation of their land to such a point that they can argue a case that the land is now only suitable for development.

Page 5 of the Draft Plan makes forecasts as to the population, a 36% increase, and housing numbers for 2036. However no projections are made as to what the Koala numbers will be on the Coast even though there is knowledge of their present population. Tweed Shire Council has the full support of Team Koala to ensure that there is a viable and healthy Koala community which will hopefully match the increase of 36% in people. The alternative could be the extinction of the coastal Koalas from the Tweed which would be a tragedy for such an iconic Australian marsupial.

Team Koala acknowledges all the great work undertaken by Tweed Shire Council and its staff to produce the Koala Plan of Management. Our president, Jenny Hayes, anticipates making a positive contribution as a member of the Community Advisory Committee.

Team Koala looks forward to a continuing good relationship with Tweed Shire Council and its officers in the years ahead and achieving the mutual goal of the preservation of the Koalas on the Tweed Coast.

Signed

Jenny Hayes Tracey Lindberg Simon Dawson Max Barnard

President Vice President Secretary Treasurer

Jon Shuker AlexDale Geoff Maingay Jodi Anderson Jim O'Regan

Committee Members



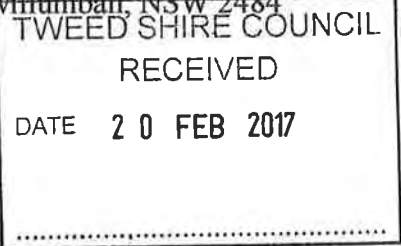
Tweed CAN

Climate Action Now



c/o 4 Queen Street, Murwillumbah, NSW 2484

Troy Green
General Manager, Tweed Shire Council
PO Box 816
MURWILLUMBAH, NSW 2484
18th Feb 2017



Response to Tweed Shire Council's Draft Community Strategic Plan 2017-2027
from Tweed Climate Action Now (TweedCAN)

Dear Mr Green

TweedCAN is a community group that has been working in the Tweed since 2006. For the last ten years TweedCAN has been involved in a number of initiatives with the primary purpose of helping the Tweed's households and businesses to become less dependent on the use of fossil fuels for their energy needs by promoting the use of renewable energy resources, in particular solar energy.

TweedCAN collaborated with Council in its Sustainable Street Program implemented in 2006 as well as developing our own associated initiatives. More recent activities have included taking stalls at events, for example during Seniors Week and the Living for the Future Expo , to promote the use of solar energy through providing information on solar energy, batteries and, latterly, the end of feed-in tariffs. We also organised public seminars in Murwillumbah and Tweed Heads at which invited experts provided information on renewable energy options.

Since 2006 TweedCAN members have also been, and still are, closely involved in promoting the need for better provision of more sustainable transport options, especially the development of cycleways.

TweedCAN has considered the recently released Tweed Shire Council Draft Community Strategic Plan 2017-2027 and is pleased to see the priority given to working with the community on the Plan's development and implementation.

As a community group with a concern for and involvement in meeting the challenges that Global Warming is bringing to the world, and in particular the effects that the resultant changes to the weather and climate that will be experienced in the Tweed, I have attached our response to the Tweed Shire Council's Draft Community Strategic Plan 2017-2027.

Where our members may have expertise in certain areas we would be pleased to meet with Council staff should any further input be needed, or in the event clarification is required on what we have said.

Yours sincerely,

(Greg Reid , Coordinator)

TWEEDCAN SUMMARY OF PROPOSED TARGETS

1.1 Natural Resource Management

- Raise Council's self sufficiency in renewable energy by 20% in each council term, thereby cutting grid energy costs and reducing greenhouse gas emissions at a rate necessary for some effect on global warming.**
- Identify key species at risk and implement preservation strategies to comply with obligations arising from declaration as a United Nations Biosphere Reserve.**
- Prepare for Climate Change through adaptation/mitigation and increase community participation in planning and responses.**

1.3 UTILITY SERVICES

- Provide recycling options for some low volume, rare earth products, within shopping zones then expanding in stages to more sorted recycling at these locations or within the yellow bin collection service.**

3.3 MOVING AROUND.

- Identify the road sections closed by flooding that are on key routes or diversions essential for access to emergency services and implement a schedule of works to extend flood access.**
- Prepare a shire plan for potential linked public access trails/cycle ways that may act not only as amenity and tourism attractions but as wildlife corridors joining specie habitats. Incorporate this plan into development approval processes.**



THE RESPONSE OF TWEED CLIMATE ACTION NOW (TWEEDCAN)

TO TWEED SHIRE COUNCIL'S DRAFT COMMUNITY STRATEGIC PLAN 2017-2027

Introduction

It is important to recognise that the course of Climate Change will largely be determined over the period of the strategic plan. Climate Science has a statistical base and as data has accumulated and modelling has improved it is clear that our current trajectory is toward the more severe end of projected impacts. The Tweed is exposed to economic, demographic and environmental impacts from Global Warming.

While it might be expected that agriculture will bear the brunt of economic impact with tourism a close second it must be recognised that larger, global changes are underway. As the world changes to renewable energy technologies, the Tweed is at risk of being left behind and tethered to an increasingly expensive grid. Major trading partners will be affected which in turn will impact taxation and superannuation revenues. While council cannot control these impacts it can lead technological and cultural change that will buffer the local economy.

Demographically the Tweed has an aging population with increasing health needs and more vulnerable to weather extremes. The arrival of wealthy retirees may slow if the Tweed seems ill prepared, if its climate is no longer attractive or if the environment they came to enjoy is in decline.

The average frequency of days over 35 degrees in Murwillumbah has already quadrupled compared to the 1960s and is set to double again by 2030. Research reports a high confidence that severe weather events in the Tweed will be of a more extreme nature. Flooding already appears to be adopting a pattern that is more rapid and intense. Season lengths are also changing with impacts on unique flora, fauna, horticulture and potentially tourism.

While the extreme weather events will have the greatest immediate effects on everyday life in the Tweed and appropriate provisions must be put in place to mitigate their impacts within the Tweed, the slower, incremental changes will also need to be carefully considered as well as the less obvious winds of economic change. Most importantly, targets must be adopted that recognise the next ten years as the critical period of technological change to reduce greenhouse emissions.

In considering the Principle Streams, sub-streams and key services (p 13) TweedCAN, rather than attempting to cover all of the issues raised, has restricted its response to addressing some of the specific issues in:

1.1 Natural Resource Management

3.1 People

where we felt we had a particular interest and concern.

In general we have noted and agree with the Council's stated Goals and the Strategies/ actions that are being proposed. However, we feel that some of the Strategies/Actions are quite limited and the Targets, while laudable, have little substance as they provide no clear indication of time-lines, resources that will be allocated or other indicators of how the Council hopes to achieve these targets within the timespan of the Plan - 10 years.

TweedCAN has therefore focussed on the Targets in the sections where we feel we have a particular interest and concern. We have made suggestions as to how they could be made stronger or where we feel an additional Target could be included, in order to provide a better basis for the subsequent Delivery Plan and for assessing the extent to which outcomes are achieved, both within this Council's term of office and in the timespan years of the Plan.

1.1 Natural Resource Management

Climate Change is adding pressures against the survival of native species, both Flora and Fauna. While Council has responded with actions on an ad hoc basis to protect some species and habitats (eg Koalas, Curlews) we are unaware of any overall assessment by Council of threatened species and a preservation plan.

We do, however, remind Council of the Border Ranges Rainforest Biodiversity Management Plan, which was signed off by the New South Wales Government together with the Queensland Government in 2010 to which it has responsibilities which should be accounted for in regard to both Flora and Fauna in those specific areas of the Shire, which could be used as the basis of a specific plan for the Shire as a whole. Council also has obligations under the declaration of the district as a critical Biosphere Reserve by the United Nations.

As early action will be much more effective and at a lower cost we would like to propose an additional target as follows:

Additional Target

Identify key species at risk and implement preservation strategies to comply with obligations arising from declaration as a United Nations Biosphere Reserve.

It would of course be important to actively work with and involve the other levels of Government that may already be involved in these issues as well as to involve others as may be appropriate together with community groups with significant experience in these matters.

We suggest that Target 3 should read as follows:

Raise Council's self sufficiency in renewable energy by 20% in each council term, thereby cutting grid energy costs and reducing greenhouse gas emissions at a rate necessary for some effect on global warming.

We wish to remind the Council that it is clear that the economics have passed a crossover point where investment in renewable energy costs less than rising grid power prices and returns exceed cash rates of interest several fold. Council's current rates of progress, including planned installations, are too slow for

significant effect and would take 100 years to realise the stated "Action" of 100% self sufficiency in renewable energy. Temperatures will continue to rise and recriminations will follow unless the council meets the broader public expectations of more ambitious action from those in air conditioned offices.

Increasing "self sufficiency" in energy supply is essential. Policy paralysis at a federal level has created a shortage of supply which privately owned generators are exploiting to push up spot prices. With Hazelwood coal power station closing this year, Liddell in 2020 and Bayswater 2025, power supply and particularly off-peak power will be less reliable and more expensive. The power grid is moving away from centralised power production to more dispersed localised production. Council must make a start in this process not only to ensure its power needs but to limit impending cost blow outs in grid energy supplies.

We suggest that Council should examine programs that State Governments, for example the ACT, and other local councils for example Sydney City Council, have taken to change the source of the energy and power used and the amounts used within their jurisdictions. While we do not envisage that Council could generate all power for the Shire - as Broken Hill City Council has done with a large solar installation - nevertheless some combination of renewable resources within the Shire or in conjunction with neighbouring Councils should be pursued so that all ratepayers might benefit, not just those with capital reserves.

We suggest that Target 4 should read as follows:

Prepare for Climate Change through adaptation/mitigation and increase community participation in planning and responses.

It is painfully clear that climate change has begun and more extreme conditions are impacting the shire. These impacts include new weed species, habitat degradation, heat stress amongst the elderly and those who work outdoors, less flood warning, more intense erosion events and so on. It is also clear that in extreme circumstances such as cyclones, emergency services and council infrastructure cannot cope without coordinated help from the community. Climate adaptation plans need to be reviewed as soon as possible and to incorporate community groups in the planning and execution. Community participation in mitigation (reducing greenhouse emissions) must also be encouraged through strategies such as electric vehicle charging points and community renewable energy schemes.

1.3 UTILITY SERVICES

It is not clear in the first Target if it means that 70% of the current amount of rubbish collected goes into landfill and should be should be diverted from landfill. If so what types of the rubbish currently going into landfill can be diverted, how, by what means, with what end use/s?

We wish to see the specific details in the Plan

We applaud the recycling efforts of the Council at the Stotts Island depot. Unfortunately the rates of recycling on some items are very low since the majority of residents are unwilling to make a special journey to the depot or council offices just for small volume items not catered for in the yellow bins. Items such as LED lights, compact rechargeable batteries and mobile phones contain rare earth metals, of which supplies are rapidly diminishing world wide. Encouraging recycling of these materials will be essential in developing a sustainable society. Since "Enhanced Recycling" appears to have fallen off the waste management tender, we propose the following additional target.

Additional Target

Provide recycling options for some low volume, rare earth products, within shopping zones then expanding in stages to more sorted recycling at these locations or within the yellow bin collection service.

TweedCAN's response to People, Places and Moving Around: Who we are and how we live.

3.3 MOVING AROUND.

We agree with the Goal and approve the Strategies/actions that have been suggested to achieve this. However we have reservations about the Targets in that they are not specific enough and so would wish to see them framed with higher levels of ambition.

In addition we are aware that the concentration of acute health services at Tweed Heads Hospital means treatment for emergencies, such as heart attack, stroke, major accidents and other life threatening conditions, as well as impending childbirth, requires all weather road access to Tweed Heads.

Climate change is causing increasing rainfall intensity leading to more rapid, short term flooding in the Tweed. Often, access to Murwillumbah or from Murwillumbah to Tweed is cut at short, low lying sections on the key roads. The rescue helicopter cannot replace multiple ambulances needed for major accidents and in any case is often grounded by low cloud during floods. Works to reduce the frequency and duration of the interruption to these critical access corridors should be a priority.

Additional Target

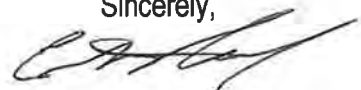
Identify the road sections closed by flooding that are on key routes or diversions essential for access to emergency services and implement a schedule of works to extend flood access.

Over time, development in the shire is likely to fragment specie populations and cut potential amenity routes for pedestrians or cyclists. Isolated species populations will be unable to migrate in response to climate change. Residents and tourists will not be able to enjoy extended trails exploring the natural beauty of the shire. Long trails linking villages and natural beauty are major attractions in many overseas countries.

Additional Target

Prepare a shire plan for potential linked public access pathways that may act as cycle ways/wildlife corridors joining specie habitats and incorporate these into planning considerations.

Sincerely,



Mr Greg Reid for Tweed Climate Action Now