



TWEED
SHIRE COUNCIL

Mayor: Cr K Milne

Councillors: G Bagnall (Deputy Mayor)
C Byrne
B Longland
W Polglase
P Youngblutt

Agenda

Ordinary Council Meeting Thursday 15 September 2016

held at **Council Chambers, Murwillumbah Civic & Cultural Centre,**
Tumbulgum Road, Murwillumbah commencing at 5.00pm

COUNCIL'S CHARTER

Tweed Shire Council's charter comprises a set of principles that are to guide Council in the carrying out of its functions, in accordance with Section 8 of the Local Government Act, 1993.

Tweed Shire Council has the following charter:

- to provide directly or on behalf of other levels of government, after due consultation, adequate, equitable and appropriate services and facilities for the community and to ensure that those services and facilities are managed efficiently and effectively;
- to exercise community leadership;
- to exercise its functions in a manner that is consistent with and actively promotes the principles of multiculturalism;
- to promote and to provide and plan for the needs of children;
- to properly manage, develop, protect, restore, enhance and conserve the environment of the area for which it is responsible, in a manner that is consistent with and promotes the principles of ecologically sustainable development;
- to have regard to the long term and cumulative effects of its decisions;
- to bear in mind that it is the custodian and trustee of public assets and to effectively account for and manage the assets for which it is responsible;
- to facilitate the involvement of councillors, members of the public, users of facilities and services and council staff in the development, improvement and co-ordination of local government;
- to raise funds for local purposes by the fair imposition of rates, charges and fees, by income earned from investments and, when appropriate, by borrowings and grants;
- to keep the local community and the State government (and through it, the wider community) informed about its activities;
- to ensure that, in the exercise of its regulatory functions, it acts consistently and without bias, particularly where an activity of the council is affected;
- to be a responsible employer.

Items for Consideration of Council:

ITEM	PRECIS	PAGE
	CONFIRMATION OF MINUTES	5
1	[CONMIN-CM] Confirmation of the Minutes of the Ordinary Council Meeting held Thursday 18 August 2016	5
	SCHEDULE OF OUTSTANDING RESOLUTIONS	7
2	[SOR-CM] Schedule of Outstanding Resolutions	7
	MAYORAL MINUTE	11
3	[MM-CM] Mayoral Minute for August 2016	11
	RECEIPT OF PETITIONS	15
4	[ROP-CM] Receipt of Petitions	15
	REPORTS THROUGH THE GENERAL MANAGER	17
	REPORTS FROM THE DIRECTOR COMMUNITY AND NATURAL RESOURCES	17
5	[CNR-CM] Licence to Pottsville and District Men's Shed Inc. - Lot 301 DP 1125090 at Pottsville	17
6	[CNR-CM] Tweed Stormwater Quality Management Plan 2016	20
	REPORTS FROM THE DIRECTOR ENGINEERING	24
7	[E-CM] Road Naming - Tweed Heads South	24
8	[E-CM] 39 Terrace Street, Chinderah	28
	REPORTS FROM THE DIRECTOR CORPORATE SERVICES	39
9	[CS-CM] In Kind and Real Donations - April/May/June 2016	39
10	[CS-CM] Monthly Investment and Section 94 Development Contribution Report for Period ending 31 August 2016	44
	ORDERS OF THE DAY	47
11	[NOM] Pottsville Men's Shed - Ideal Central Location	47
12	[NOM] Green Energy Investment	51
13	[NOM] Food For Thought Forum	53
	REPORTS FROM SUB-COMMITTEES/WORKING GROUPS	56
14	[SUB-TRAG] Minutes of the Tweed Regional Art Gallery Advisory Committee Meeting held Wednesday 10 February 2016	56
15	[SUB-TRAG] Minutes of the Tweed Regional Gallery Advisory Committee Meeting held Wednesday 11 May 2016	69

16	[SUB-TRAG] Minutes of the Tweed Regional Gallery Advisory Committee Meeting held Wednesday 3 August 2016	84
17	[SUB-TRC] Minutes of the Tweed River Committee Meeting held Wednesday 10 August 2016	95
18	[SUB-LTC] Minutes of the Local Traffic Committee Meeting held Thursday 11 August 2016	99
	CONFIDENTIAL ITEMS FOR CONSIDERATION	117
	REPORTS THROUGH THE GENERAL MANAGER IN COMMITTEE	117
	REPORTS FROM THE GENERAL MANAGER IN COMMITTEE	117
C1	[GM-CM] Murwillumbah Railway Station	117
	REPORTS FROM THE DIRECTOR ENGINEERING IN COMMITTEE	118
C2	[E-CM] Assignment of Licence Agreement over Road Reserve - Wharf Street, Tweed Heads	118
C3	[E-CM] Clarrie Hall Dam - Land Acquisition - 141 Lone Pine Road, Doon Doon	119

CONFIRMATION OF MINUTES

- 1 [CONMIN-CM] Confirmation of the Minutes of the Ordinary Council Meeting held Thursday 18 August 2016

SUBMITTED BY: Corporate Governance



Civic Leadership

LINKAGE TO INTEGRATED PLANNING AND REPORTING FRAMEWORK:

- 1 Civic Leadership
- 1.2 Improve decision making by engaging stakeholders and taking into account community input
- 1.2.2 Decisions made relating to the allocation of priorities will be in the long-term interests of the community
-

The Minutes of the Ordinary Council Meeting held Thursday 18 August 2016 are attached for information and adoption by Council.

RECOMMENDATION:

That the Minutes of the Ordinary Council Meetings held Thursday 18 August 2016 be adopted as a true and accurate record of proceedings of that meeting with the following change (underlined) to Minute No 393 Item 7 [GM-CM] Dissolution of Far North Coast County Council:

- "3. *Being a local control authority under the Noxious Weeds Act 1993 (the Act) and pursuant to Section 68 of that Act:*
- *Delegates to Rous County Council the functions of Tweed Shire Council, as a local control authority, that are capable of being delegated under the Act.*
 - *Delegates to the position of General Manager, Rous County Council the functions of Tweed Shire Council, as a local control authority, that are capable of being delegated under the Act.*
 - *Delegates to the position of Manager Operations, Rous County Council the functions of Tweed Shire Council, as a local control authority, under Sections 12, 18, 18A, 20, 36A, 41, 45 and 64 of the Act.*
 - *Delegates to the position of Manager Weeds Services, Rous County Council the functions of Tweed Shire Council, as a local control authority, under Sections 12, 18, 18A, 20(3), 36A, 45 and 64 of the Act.*
 - *Delegates to the positions of Senior Noxious Weeds Officer and Noxious Weeds Officer Rous County Council the functions of Tweed Shire Council, as a local control authority, under Section 45 (excluding Section 45(2)(b)) of the Act."*
-

REPORT:

As per Summary.

COUNCIL IMPLICATIONS:

a. Policy:

Code of Meeting Practice Version 2.5.

b. Budget/Long Term Financial Plan:

Not applicable.

c. Legal:

Not Applicable.

d. Communication/Engagement:

Inform - We will keep you informed.

UNDER SEPARATE COVER/FURTHER INFORMATION:

*To view any "**non confidential**" attachments listed below, access the meetings link on Council's website www.tweed.nsw.gov.au or visit Council's offices at Tweed Heads or Murwillumbah (from Friday the week before the meeting) or Council's libraries (from Monday the week of the meeting).*

Attachment 1

Minutes of the Ordinary Council Meeting held Thursday 18 August 2016 2016 (ECM 4188561)

SCHEDULE OF OUTSTANDING RESOLUTIONS

2 [SOR-CM] Schedule of Outstanding Resolutions



Civic Leadership

LINKAGE TO INTEGRATED PLANNING AND REPORTING FRAMEWORK:

- 1 Civic Leadership
 - 1.2 Improve decision making by engaging stakeholders and taking into account community input
 - 1.2.1 Council will be underpinned by good governance and transparency in its decision making process
-

CODE OF MEETING PRACTICE:

Section 2.8 Outstanding Resolutions

No debate is to be allowed on Outstanding Resolutions. Any changes to or debate on Outstanding Resolutions should only be by way of a Notice of Motion or a report to Council.

19 SEPTEMBER 2013

ORDERS OF THE DAY

4 [NOM-Cr B Longland] Aboriginal Employment Strategy

NOTICE OF MOTION:

532

**Cr B Longland
Cr K Milne**

RESOLVED that an Aboriginal Employment Strategy be developed as part of Council's Equal Employment Opportunity Management Plan which sets appropriate targets for Aboriginal employment participation in the organisation and includes annual reporting against these targets. The Aboriginal Employment Strategy should also be included as an element of the yet to be developed Reconciliation Action Plan.

Current Status: The Reconciliation Action Plan (RAP) is currently in draft form and the Director Corporate Services and Director Community and Natural Resources are championing the process internally to provide input into the RAP, including meetings with the internal working group.

The Reconciliation Action Plan (RAP) is an operational commitment and as such there will be a range of operational projects, including the employment strategy implemented as part of the RAP.

Terms of Reference have been determined by the internal workgroup at their initial meeting held on 27 July 2016.

Councillors may wish to note the hosting of the NSW Aboriginal Network Conference in August 2016, with 19 staff attending.

16 JULY 2015

ORDERS OF THE DAY

31 [NOM] Parking Requirements for Small Businesses

408

Cr K Milne
Cr P Youngblutt

RESOLVED that Council brings forward a report on the issue of Council's requirements for parking for development approvals for new small business and intensified use of existing, or change of use, small business approvals, including but not limited to:

- a) Council's current requirements and the justification for these requirements,
- b) The potential for these requirements to act as a disincentive for new or expanding small businesses,
- c) Comparison of Council's requirements with other similar growth Councils requirements,
- d) Options to alleviate the impost on small businesses such as eliminating, reducing or providing deferred payments,
- e) Options to address the implications for Council or the community from the above.

Current Status: This requires a comprehensive amount of investigation and work and sits behind current priorities including Tweed Road Development Strategy - Traffic Study, which will inform the Tweed Road Contribution Plan and a revision of Development Control Plan (DCP), Section A5 - Subdivision Manual.

17 SEPTEMBER 2015

38 [NOM] Improving Community Consultation

519

Cr K Milne
Cr G Bagnall

RESOLVED that this item be deferred to a future Council meeting to allow the appropriate technology changes to be appraised:

On the Council website, when an item is loaded for 'On Exhibition', to add in a field in for Anticipated Council Determination Meeting (if known): (with a supporting disclaimer that dates may change at any time without notice).

Current Status: Director Planning and Regulation and Director Corporate Services met with the Mayor and it was agreed to develop a simple communication resource that explains the Development Application process.

17 MARCH 2016

ORDERS OF THE DAY

36 [NOM] Story Tiled Walls at our Libraries

148

Cr C Byrne
Cr W Polglase

RESOLVED that Council brings back a brief report to a future meeting with respect to the possibility of providing story walls though the sale of personalised tiles (or similar) at our newly refurbished libraries at Murwillumbah and Tweed Heads.

Current Status: Advice from Richmond Tweed Regional Library sought and advised that alternative funding will need to be sourced to enable story walls to be established at Murwillumbah and Tweed Heads libraries.

21 JULY 2016

REPORTS FROM THE DIRECTOR COMMUNITY AND NATURAL RESOURCES

16 [CNR-CM] Concept Plans and Estimates - South Murwillumbah

337

Cr W Polglase
Cr P Youngblutt

RESOLVED that:

1. Council receives and notes this report.
 2. Council liaises with the business owners of South Murwillumbah to obtain a better outcome.
-

Current Status: Initial meeting and briefing with South Murwillumbah business owners and Councillors was originally scheduled for October 2016 and now will be rescheduled post the election. Investigations to be undertaken and report to be prepared.

18 AUGUST 2016

ORDERS OF THE DAY

28 [NOM] Renewable Energy

425

**Cr K Milne
Cr B Longland**

RESOLVED that a report be bought forward on fast tracking the shovel readiness for implementing the renewable energy proposals presented in the briefing note to the July Council meeting for the Regional Development Australia grants.

Current Status: Report to be prepared in conjunction with the Renewable Energy Action Plan.

MAYORAL MINUTE

3 [MM-CM] Mayoral Minute for August 2016

SUBMITTED BY: Cr K Milne, Mayor

Valid



Civic Leadership

LINKAGE TO INTEGRATED PLANNING AND REPORTING FRAMEWORK:

1	Civic Leadership
1.2	Improve decision making by engaging stakeholders and taking into account community input
1.2.2	Decisions made relating to the allocation of priorities will be in the long-term interests of the community

Councillors

COMMITTEE MEETINGS

Attended by the Mayor

- 5 August NOROC Meeting – Ballina Council Chambers, Corner Tamar and Cherry Streets, Ballina.
 - 9 August Destination Tweed Board Meeting – Destination Tweed, Alma Street, Murwillumbah.
 - 10 August Tweed River Committee – Canvas and Kettle, Murwillumbah Civic Centre, Tumbulgum Road, Murwillumbah.
 - 10 August Tweed Coastal Committee – Canvas and Kettle, Murwillumbah Civic Centre, Tumbulgum Road, Murwillumbah.
 - 30 August Destination Tweed Special General Meeting – Destination Tweed, Alma Street, Murwillumbah.
-

INVITATIONS / MAYORAL REPRESENTATION:

Attended by the Mayor

- 1 August Tyalgum Activity Space Grant Announcement – Tyalgum Tennis Club, Coolman Street, Tyalgum.
-

- 3 August Careers Market Day – South Tweed Public School, 10 Heffron Street, South Tweed Heads.
- 8 August Golden Nugget Pro-Am and Official Opening Ceremony – Tweed Heads Bowls Club, Corner Wharf and Florence Streets, Tweed Heads.
- 11-12 August Food For Thought Forum – Mantra on Salt Beach, 4 Gunnamatta Avenue, Kingscliff. Crs Byrne, Longland and Polglase also attended.
- 15 August 90th Anniversary Hospital Auxiliary – All Saints Anglican Church, Byangum Road, Murwillumbah.
- 19 August Official Opening of Banana Festival and Fashion Show – Murwillumbah Civic Centre Auditorium, Tumbulgum Road, Murwillumbah. Cr Byrne also attended.
- 24 August 30th Anniversary National Meals on Wheels Day – Kingscliff Bowls Club, Marine Parade, Kingscliff.
- 24-26 August NSW Aboriginal Local Government Network Conference – Twin Towns Resort, Wharf Street, Tweed Heads. Cr Bagnall also attended.

Attended by other Councillor(s) on behalf of the Mayor

- 5 August Murwillumbah Veteran Golfers Week of Golf Presentation – Murwillumbah Golf Club, Byangum Road, Murwillumbah. Cr Polglase attended.
- 18 August 50th Anniversary/Memorial Service of the Battle of Long Tan – South Tweed Sports Club, 4 Minjungbal Drive, Tweed Heads South. Cr Byrne attended.
- 24 August Max Potential Showcase Event – Seagulls Club, Gollan Drive, Tweed Heads. Crs Byrne, Longland and Polglase attended.

Inability to Attend by or on behalf of the Mayor

All invitations were accepted by the Mayor or attended by another Councillor on her behalf.

REQUESTS FOR WORKSHOPS:

Councillors did not request any additional workshops during August 2016.

CONFERENCES:

Conferences attended by the Mayor and/or Councillors

Councillors did not attend any conferences during August 2016.

Information on Conferences to be held

- 16-18 October LGNSW Annual Conference – WIN Entertainment Centre, Corner Crown and Harbour Streets, Wollongong

This conference is the key policy-making, professional development and networking opportunity for all councils of NSW, associate members, and the NSW Aboriginal Land Councils.

Early bird - \$899, two flights, transfers/car hire and three night's accommodation.

<http://www.lgnsw.org.au/events-training/local-government-nsw-annual-conference> .

SIGNING OF DOCUMENTS BY THE MAYOR:

- 8 August Transfer document – 341 Tweed Valley Way South Murwillumbah.
 - 15 August Licence Agreement – Tweed Southern Boatharbour Licences – Damomi Pty Ltd.
 - 23 August Licence Agreement with NSW Crown Lands – Revetment Works Hastings Point Holiday Park.
 - 25 August Transfer – Land Purchase – Broadwater Parkway Area E Terranora.
-

COUNCIL IMPLICATIONS:

a. Policy:

Code of Meeting Practice Version 2.5.

b. Budget/Long Term Financial Plan:

Appropriate expenditure is allowed for attendance by Councillors at nominated conferences, training sessions and workshops.

c. Legal:

Not applicable.

d. Communication/Engagement:

Inform - We will keep you informed.

RECOMMENDATION:

That:

- 1. The Mayoral Minute for the month of August 2016 be received and noted.**
 - 2. The attendance of Councillors at nominated Conferences be authorised.**
-

UNDER SEPARATE COVER/FURTHER INFORMATION:

Nil.

RECEIPT OF PETITIONS

4 [ROP-CM] Receipt of Petitions

SUBMITTED BY: Corporate Governance



Civic Leadership

LINKAGE TO INTEGRATED PLANNING AND REPORTING FRAMEWORK:

- 1 Civic Leadership
 - 1.2 Improve decision making by engaging stakeholders and taking into account community input
 - 1.2.2 Decisions made relating to the allocation of priorities will be in the long-term interests of the community
-

SUMMARY OF REPORT:

Under Section 1.5.4 Receipt of Petitions in the Code of Meeting Practice Version 2.5:

Petitions received by Councillors or forwarded to the (Acting) General Manager will be tabled as per the Order of Business, Item 11, Receipt of Petitions.

Unless Council determines to consider it in conjunction with a report already listed on the agenda, no motion (other than a motion to receive the same) may be made on any petition until the next Ordinary Meeting after that at which it has been presented.

RECOMMENDATION:

That the following tabled Petition(s) be received and noted:

REPORT:

As per Summary

OPTIONS:

That in accordance with Section 1.5.4 of the Code of Meeting Practice Version 2.5:

1. The tabled Petition(s) be considered in conjunction with an Item on the Agenda.
2. The tabled Petition(s) be received and noted.

CONCLUSION:

Any Petition tabled should be considered under Section 1.5.4 of the Code of Meeting Practice Version 2.5.

COUNCIL IMPLICATIONS:

a. Policy:

Code of Meeting Practice Version 2.5.

b. Budget/Long Term Financial Plan:

Not Applicable.

c. Legal:

Not Applicable.

d. Communication/Engagement:

Consult-We will listen to you, consider your ideas and concerns and keep you informed.

UNDER SEPARATE COVER/FURTHER INFORMATION:

Nil.

REPORTS THROUGH THE GENERAL MANAGER

REPORTS FROM THE DIRECTOR COMMUNITY AND NATURAL RESOURCES

5 [CNR-CM] Licence to Pottsville and District Men's Shed Inc. - Lot 301 DP 1125090 at Pottsville

SUBMITTED BY: Design

Validms



Supporting Community Life

LINKAGE TO INTEGRATED PLANNING AND REPORTING FRAMEWORK:

2	Supporting Community Life
2.5	Provide vibrant and accessible town, community and business centres
2.5.2	Facilitate the development of a network of neighbourhood centres and community places to meet the needs of local residents

SUMMARY OF REPORT:

Pottsville and District Men's Shed Inc. intend to commence construction of a shed at the Black Rocks sports field, in accordance with the approval for the shed issued on 14 December 2015.

At its meeting held on 21 August 2014, Council resolved to grant a lease or licence for a maximum term of five years at the Black Rocks site.

To enable construction to commence it is recommended that Council issue a licence for a term of five years to commence upon notification of commencement of construction with a peppercorn licence fee to reflect the community service of the licensee. It is also necessary to resolve to sign all required documentation under the Common Seal of Tweed Shire Council.

RECOMMENDATION:

That Council:

1. Approves the granting of a five year licence to the Pottsville & District Men's Shed Inc. over part of Lot 301 in DP 1125090 at Pottsville.
 2. Executes all necessary documentation under the Common Seal of Council.
-

REPORT:

Pottsville and District Men's Shed Inc. intend to commence construction of a shed at the Black Rocks sports field, in accordance with development consent issued on 14 December 2015.

At its meeting held on 21 August 2014, Council resolved to grant a lease or licence for a maximum term of five years at the Black Rocks site.

Development consent for the community facility (Men's Shed) was issued on 14 December 2015 over Lot 301 in DP 1125090, being a public reserve and classified as community land.

The land is also categorised as a sportsground and is included in the Plan of Management for Community Land Categorised as a Sportsground.

Clause 6.1 of the Plan of Management provides the authority to lease or licence the community land subject of the Plan for community purposes. The proposed use of the shed satisfies the criteria for community purposes in the Plan, as well as the following statement in the Plan:

"Leases may be granted for exclusive use to any organization for any community purpose as determined by Council, on such terms as Council may provide."

In this regard, Council has the authority to approve a licence for the use of part of Lot 301 for the construction of the shed and the Men's Shed activities upon completion.

To enable construction to commence it is recommended that Council approve the granting of a licence for a term of five years to commence upon notification of commencement of construction with a peppercorn licence fee to reflect the community service of the licensee. It is also necessary to resolve to sign all required documentation under the Common Seal of Tweed Shire Council.

OPTIONS:

1. To approve the granting of a licence to the Pottsville & District Men's Shed Inc. for the construction and use of a building approved under DA 15/0160.
2. To not approve the granting of a licence to the Pottsville & District Men's Shed Inc. for the construction and use of a building approved under DA 15/0160.

CONCLUSION:

The development application for the shed provided sound arguments for the mens' shed in this location, and the formal approval, by a resolution to grant a five year licence, supports the resolution of 21 August 2014. It is recommended that Council approve the granting of a licence to the Pottsville and District Men's Shed Inc. for a term of five years at a peppercorn licence fee to reflect the community service that will be provided in Pottsville.

COUNCIL IMPLICATIONS:

a. Policy:

Corporate Policy Not Applicable.

b. Budget/Long Term Financial Plan:

The licence fee will be a peppercorn amount to reflect the community services of the licensee.

c. Legal:

Not Applicable.

d. Communication/Engagement:

Inform - We will keep you informed.

There has been a great deal of public engagement of the proposed men's shed at the Black Rocks sports field, including the development application for the shed. This report formalises the resolution of 21 August 2014 and acknowledges that the development approval addressed issues raised from the public engagement. This report is a mechanism to formalise an earlier approval to grant tenure to the Men's Shed group and does not require public engagement.

UNDER SEPARATE COVER/FURTHER INFORMATION:

Nil.

6 [CNR-CM] Tweed Stormwater Quality Management Plan 2016

SUBMITTED BY: Natural Resource Management

Validms



Caring for the Environment

LINKAGE TO INTEGRATED PLANNING AND REPORTING FRAMEWORK:

4	Caring for the Environment
4.3	Maintain and enhance Tweed's waterways and its catchments

SUMMARY OF REPORT:

Council has prepared a new draft Urban Stormwater Quality Management Plan, a document that provides the environmental context and policy objectives that underpin the Development Design Specification D7 – Stormwater Quality. The 2016 plan replaces a document developed by Council for the same purpose in 2000.

The Tweed Urban Stormwater Quality Management Plan 2000 was originally prepared and adopted in response to a Notice issued to all NSW Councils by the Environment Protection Authority (now Office of Environment and Heritage) under Section 12 of the *Protection of the Environment Administration Act, 1991*.

Given the age of the existing document and changes in stormwater best management practice, Council has reviewed the scope of the existing plan and determined that a revised stormwater management plan should:

- Confirm Council's stormwater management objectives,
- Provide ambient water quality and stormwater quality objectives,
- Insist on the use of best practice design guidance available to the industry, and
- Provide specific and measurable guidance for monitoring and maintenance of stormwater quality improvement devices.

The Tweed Urban Stormwater Quality Management Plan 2016 addresses these objectives, and is consistent with the DCP Section A5 Subdivision Manual - Development Design Specification D7 (Stormwater Quality), which provides the technical guidance required to achieve nominated environmental outcomes.

A draft version of the Tweed Urban Stormwater Quality Management Plan 2016 was provided to Council on 21 April 2016 and recommended for exhibition. The plan was placed on exhibition for the period Tuesday 10 May 2016 to Friday 10 June 2016. No submissions were received.

The purpose of this report is to recommend adoption of the plan following its exhibition.

RECOMMENDATION:

That Council adopts the Tweed Urban Stormwater Quality Management Plan 2016.

REPORT:

Stormwater pollution has economic, social and environmental implications on receiving environments. Management of stormwater pollution from existing urban areas is a significant challenge for Council, a challenge that will grow as the population of Tweed increases and construction of sub-divisions and individual dwellings continues.

The Tweed community's strong support for protection of the environment, and in particular our waterways, has seen the theme of urban stormwater quality management expressed as objective 4.3.2 of the Community Strategic Plan. As such, Council is committed to the implementation of current best practice in stormwater management. The principles of ecologically sustainable development and water sensitive urban design are fundamentally important to the management of stormwater, which is both a resource and a potential contaminant of natural waterways.

The draft Tweed Urban Stormwater Quality Management Plan 2016 (USQMP):

- Confirms Council's stormwater management objectives,
- Confirms water quality objectives for receiving waters,
- Insists on the use of best practice design guidance available to the industry,
- Provides specific and measurable guidance for monitoring and maintenance of stormwater quality improvement devices (SQIDs),
- Ensures stormwater design and maintenance is always consistent with current best practices, and
- Promotes consultation between the applicant and Council at all stages of SQID design and construction, including the planning, design, construction, performance monitoring and asset handover phases.

Tweed Shire Council's Development Design Specification D7 – Stormwater enables the implementation of the Tweed USQMP by detailing stormwater objectives/standards and prescribed stormwater management measures that comply with the Tweed USQMP and contemporary best practice.

A draft version of the Tweed Urban Stormwater Quality Management Plan 2016 was provided to the Council meeting of 21 April 2016 and recommended for public exhibition. Council resolved to exhibit the plan and this occurred for the period Tuesday 10 May 2016 to Friday 10 June 2016.

Notices of the exhibition period were placed in the Tweed Link and on Council's website. Notice was also provided to a number of interested parties who subscribe to a Council information service that provides email updates of changes to development design specifications.

There were no public submissions received on the plan. Council staff review resulted in the inclusion of reference to predicted climate change impacts on precipitation patterns in the Northern Rivers.

It is considered that the Tweed Urban Stormwater Quality Management Plan 2016 provides an appropriate policy framework for implementation of best practice stormwater management for the Shire, and that it adequately supports and informs Development Design

Specification D7 – Stormwater, which is used by the industry to undertake the detailed design of stormwater treatment devices.

OPTIONS:

Council may either:

1. Adopt this plan, or
2. Request that it be amended and re-exhibited.

CONCLUSION:

Stormwater runoff from existing and proposed development has a significant impact on the environmental and recreational value of Tweed Waterways. The Tweed Urban Stormwater Quality Management Plan sets out Council's rationale and policy objectives for stormwater management, and supports the Development Design Specification D7 – Stormwater which is currently used to guide the design and construction of water quality protection devices. Adoption of this plan will confirm Council's intent and expectations for design and construction of stormwater treatment devices.

COUNCIL IMPLICATIONS:

a. Policy:

The Tweed Urban Stormwater Quality Management Plan 2016 provides policy guidance for development in the Shire, and compliments existing land use planning instruments such as the LEP, DCP's and Coastal Zone Management Plans.

b. Budget/Long Term Financial Plan:

Not Applicable.

c. Legal:

Not Applicable.

d. Communication/Engagement:

Inform - We will keep you informed.

The Tweed Urban Stormwater Quality Management Plan 2016 will be available on Council's website.

UNDER SEPARATE COVER/FURTHER INFORMATION:

Attachment 1.

Tweed Urban Stormwater Quality Management Plan 2016
(ECM 4180565)

REPORTS FROM THE DIRECTOR ENGINEERING

7 [E-CM] Road Naming - Tweed Heads South

SUBMITTED BY: Design

Validms



Supporting Community Life

LINKAGE TO INTEGRATED PLANNING AND REPORTING FRAMEWORK:

2	Supporting Community Life
2.4	An integrated transport system that services local and regional needs
2.4.3	Ensure local streets, footpaths and cycleways are provided, interconnected and maintained

SUMMARY OF REPORT:

Council recently advertised its intention to name the laneway which runs off Seaview Street at Tweed Heads South seeking submissions for suitable names.

One suitable submission was received for "Herb or Herbies Lane".

The submission refers to an original land owner and resident of the laneway, the late Mr Herb English. Mr English purchased 2 parcels of land adjacent to the laneway around 1979 and commenced building the family home where he resided for around 20 years. Mrs English is still residing at the property to date. Mr English regularly contributed to the maintenance of the laneway and was well known in the area for his building and construction skills. Mr English passed away in March 2003 and is considered appropriate to name the laneway in his honour.

It is recommended that Council advertise its intention to name the laneway running off Seaview Street at Tweed Heads South as "Herbies Lane" allowing one month for submissions or objections to the proposal.

RECOMMENDATION:

That Council:

- 1. Advertises its intention to name the laneway which runs off Seaview Street at Tweed Heads South as "Herbies Lane" allowing one month for submissions or objections to the proposal.**
- 2. Notifies the relevant authorities under the provisions of the Roads (General) Regulation 2008**

3. **ATTACHMENTS 1 to 3 are CONFIDENTIAL in accordance with Section 10A(2) of the Local Government Act 1993, because it contains:-**
 - (a) **personnel matters concerning particular individuals (other than councillors)**

REPORT:

Council recently advertised its intention to name the laneway which runs off Seaview Street at Tweed Heads South seeking submissions for suitable names.

One suitable submission was received for “Herb or Herbies Lane”. See Figure 1 below.

Figure 1 showing location of Lane proposed to be named Herbies Lane:



The submission refers to an original land owner and resident of the laneway, the late Mr Herb English. Mr English purchased 2 parcels of land adjacent to the laneway around 1979, he built a brick shed in which the family lived while he and his brother built the family home where he resided for around 20 years. The shed was later used for his earth moving business.

Mrs English is still residing at the property to date. Mr English regularly contributed to the maintenance of the laneway and was well known in the area for his building and construction skills. Mr English passed away in March 2003 and is considered appropriate to name the laneway in his honour.

OPTIONS:

That Council:

1. Advertises its intention to name the laneway running off Seaview Street at Tweed Heads South as 'Herbies Lane'.
2. Readvertises its intention to name the laneway running off Seaview Street at Tweed Heads South seeking further submissions for suitable names.

CONCLUSION:

It is recommended that Council advertises its intention to name the laneway running off Seaview Street at Tweed Heads South as "Herbies Lane" allowing one month for submissions or objections to the proposal.

COUNCIL IMPLICATIONS:

a. Policy:

Naming of Streets and Roads v1.2.

b. Budget/Long Term Financial Plan:

No Budget Implications.

c. Legal:

Not Applicable.

d. Communication/Engagement:

Consult-We will listen to you, consider your ideas and concerns and keep you informed.

Proposal advertised in the Tweed Link on 28 June 2016 with the submission period closing 26 July 2016.

Correspondence received from Raelene Ferris proposing Herbs or Herbies Lane dated 13 July 2016.

Correspondence received from Leanne Hardy proposing Leanne Lane dated 19 July 2016 – submission does not comply with Council's Policy on Naming of Streets and Roads and was not deemed a suitable submission.

UNDER SEPARATE COVER/FURTHER INFORMATION:

(Confidential) Attachment 1. Correspondence from Raelene Ferris (ECM 4141165).

(Confidential) Attachment 2. Correspondence from Leanne Hardy (ECM 4152539).

(Confidential) Attachment 3. Correspondence to Leanne Hardy (ECM 4167818).

8 [E-CM] 39 Terrace Street, Chinderah

SUBMITTED BY: Roads and Stormwater

Validms



Supporting Community Life

LINKAGE TO INTEGRATED PLANNING AND REPORTING FRAMEWORK:

2	Supporting Community Life
2.3	Provide well serviced neighbourhoods
2.3.5	Ensure adequate stormwater drainage, flood management and evacuation systems are in place to protect people and property from flooding

SUMMARY OF REPORT:

At the July 2016 meeting, it was resolved that:

"Council brings forward a report in relation to the history, legal status/ownership and responsibility for the existing open drain which extends from within Sand Street, Chinderah through the north eastern corner of Lot 2 DP1127741 and then northerly to approximately Ocean Drive.

The report should address when the drain was constructed, by whom it was constructed and what approvals, if any, were obtained from affected landowners and any statutory approvals that may have been required and whether or not the Council currently maintains the drain or has in the past maintained the drain."

This report is provided in response.

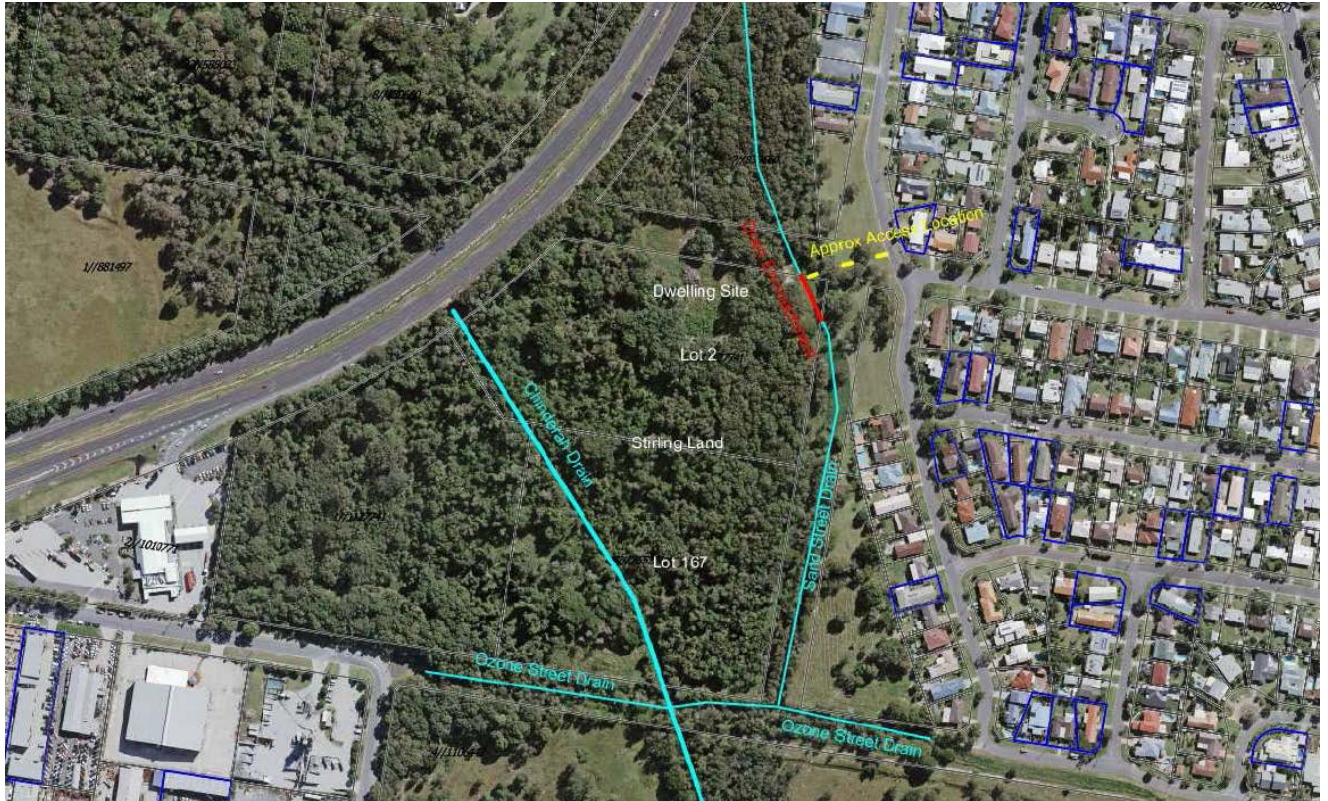
RECOMMENDATION:

That Council:

- 1. Notes the lack of historic information regarding the construction of open drains in and around Lot 2 DP 1127741;**
- 2. Advises the Stirling family that based on existing information, Council does not claim ownership or responsibility for the open drain that has been constructed within Lot 2 DP 1127741;**

REPORT:

This report deals with various matters raised by the Stirling family, the owners of Lot 2 DP 1127741 and Lot 167 DP 755701, No.1 Terrace Street Chinderah (the "**Stirling Land**"). The Stirling land is shown below:



There are a number of open drains located in and around the Stirling Land. This includes the main Kingscliff - Chinderah drain, which is contained within an Easement for Drainage. Branch drains running generally north-south (the "**Sand Street drain**") and east-west (the "**Ozone Street drain**") feed into this main drain.

The Sand Street drain originates in the vicinity of Ocean Drive north of the Stirling Land, and runs southward through private land, across the Terrace Street road reserve, across the north-eastern corner of the Stirling Land, and then along an unformed Council Road Reserve, which is an extension of Sand Street. At this point it discharges to the Ozone Street drain, which takes the water westward to the Kingscliff - Chinderah Drain.

The Stirling family has made various representations to Council over many years regarding the encroachment of the Sand Street drain within their land.

It is understood that the purpose of these representations is to seek compensation for the construction of the drain on their land, citing difficulties in accessing their land, and additional costs imposed on construction of a driveway access from Sand Street to Lot 2 for an approved dwelling (DA05/1382).

Roads and Stormwater staff, Danny Rose and Steve Paff, met on site with the Stirlings on 13 April 2016. A subsequent meeting was held with the Stirlings, Mr Rose and the Director

Engineering and General Manager on 10 May 2016. These meetings were unable to resolve the issues to the satisfaction of the Stirlings.

The most recent representations led to a Notice of Motion at the July 2016 Council meeting, whereby it was:

"RESOLVED that Council brings forward a report in relation to the history, legal status/ownership and responsibility for the existing open drain which extends from within Sand Street, Chinderah through the north eastern corner of Lot 2 DP1127741 and then northerly to approximately Ocean Drive.

The report should address when the drain was constructed, by whom it was constructed and what approvals, if any, were obtained from affected landowners and any statutory approvals that may have been required and whether or not the Council currently maintains the drain or has in the past maintained the drain."

The italicised part of the resolution quotes a submission from the Stirlings to Council received 17 May 2016.

The following responds to the resolution:

History of the Sand Street Drain

In November 2015, the Stirlings lodged a GIPA application for all information relating to the Sand Street and Ozone Street drains. The subsequent search of Council's records failed to find any information around the construction of the drain, or any approvals to do so. The only reliable source of information for the history of drainage construction in this area is historic aerial imagery. Extracts of relevant images are provided below:

Aerial Image 1962



Aerial Image: 1970



Aerial Image: 1976



Aerial Image 1979



Aerial Image 1987



Aerial Image 1995



Aerial Image 1996



These images demonstrate that over several decades various agricultural drains and remnant creeks have been redirected and upgraded with changes in the catchment between

Chinderah and north Kingscliff. The Kingscliff - Chinderah drain is shown to be formalised on its current alignment by 1970. By 1976, with land development underway to the east, it appears that the southern section of the Sand Street drain was established, with land disturbance to the north in the vicinity of the Stirling Land. By 1987, the Sand Street drain appears to be present on the Stirling Land. In 1995 and 1996, when the Chinderah Bypass was under construction, further works appear to have been carried out on the northern section of the Sand Street drain, and the drain was formed in its current configuration.

Council holds no record of who constructed the Sand Street drain in its various stages, and there are many possibilities, including private landholders, drainage authorities, land developers, Council, and the Department of Main Roads - now Roads and Maritime Services.

Given the Stirling Land has been in family ownership since 1920 (source: Mark Stirling), it would appear that the family has had ample opportunity over the period covered by the imagery to raise and rectify concerns relating to drainage impacting on their property with whomever was undertaking the works at that time.

Approvals

There are no approvals for construction of the Sand Street drain in Council records.

The statutory requirement for approvals for these drainage works is undetermined, as this would depend on when the drain was constructed and by whom.

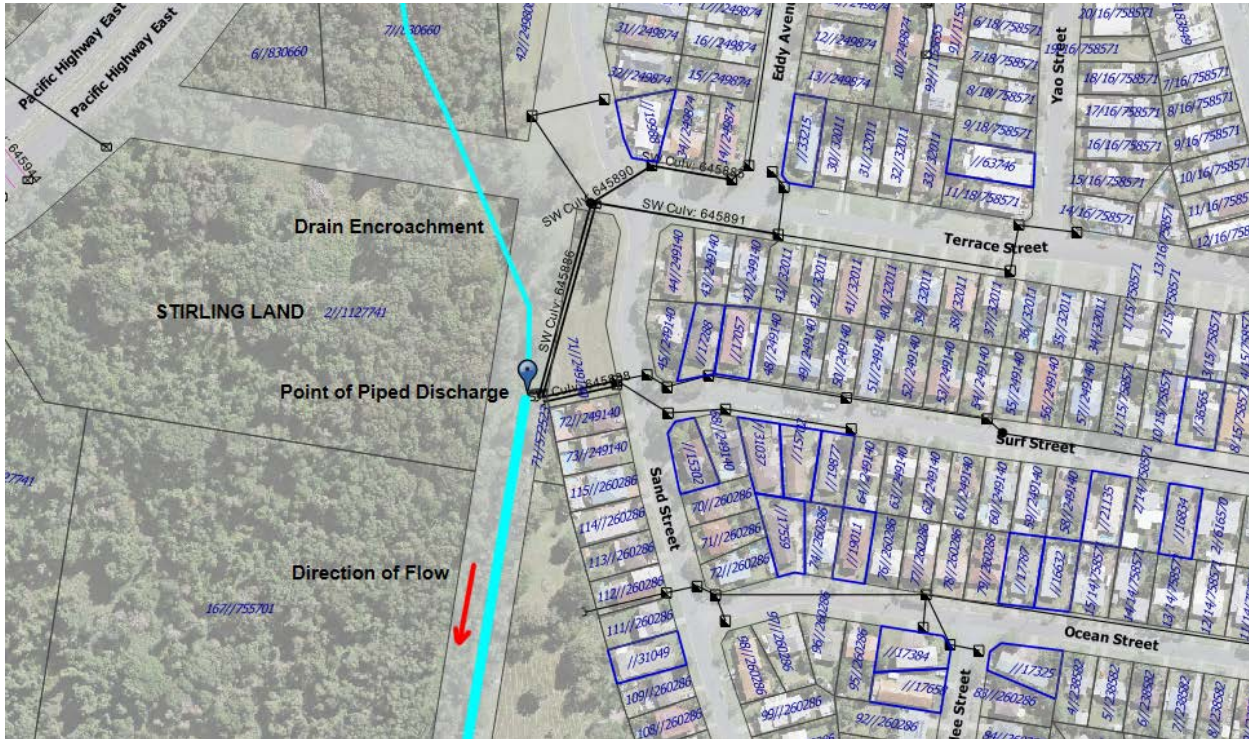
Ownership of the Sand Street Drain

Public stormwater from Sand Street, Terrace Street and Surf Street to the east is discharged to the Sand Street drain at a point located south (downstream) of the encroachment to the Stirling Land (refer to GIS image below). This is consistent with the 1976 and 1979 aerial imagery which shows the establishment of the southern section of the drain at the time of subdivision works (road, drainage etc). Council accepts ownership and maintenance responsibility of the open drain downstream of the piped stormwater outlet and through to the Ozone Street drain.

In his correspondence Mark Stirling identifies roofwater discharge from a unit development on the corner of Ocean Drive and Sand Street that discharges roof water to Ocean Drive, which then grades westward towards the Chinderah Bypass. Council is also aware of two inlet pits located at the Sand Street - Shell Street intersection, which are connected by a pipe heading westward, through an easement along the southern boundary of the same unit development, discharging onto private land.

As shown in the aerial imagery, road and presumably stormwater drainage infrastructure was in place in this area in the mid to late 1970s. The unit site was filled at around the same time, and the units themselves were constructed prior to the Chinderah Bypass construction. The Chinderah Bypass intersected existing east-west drainage systems and flow paths, and as shown in the 1995 imagery, the northern section of the Sand Street drain was then upgraded. It is likely that this occurred so as to divert these interrupted flows southward into the existing southern (Council) section of the Sand Street drain.

It is contended that as these relatively small stormwater catchments from Ocean Drive and Shell Street were in place prior to the northern section of the Sand Street drain, and do not rely on this drain for their lawful discharge, the northern section of the Sand Street drain is not in Council's ownership.



Responsibility for the Sand Street Drain

As above, Council accepts maintenance responsibility of the Sand Street drain only from the point of discharge of the street drainage network to the open drain (near Surf Street), and downstream.

Council has performed infrequent maintenance of the Sand Street and Ozone Street drain, and no significant maintenance of the main Kingscliff - Chinderah drain through the Stirling Land. While this means that there has been vegetation growth and sedimentation of these drains over time, the water level in the system is controlled by a floodgated outlet at the Tweed River in Chinderah - it is not impacted by the depth of the channel. There are no known flooding issues emanating from the drainage system's operation.

In recent correspondence, Mark Stirling has expressed concern about a rock weir that is located on the Kingscliff - Chinderah drain upstream of the Chinderah Bypass culverts, and that this structure has altered flows and resulted in sedimentation of the drain. This issue has been forwarded to Roads and Maritime Services, as the rock weir appears to have been associated with the construction of the Chinderah Bypass.

There is no record that Council has undertaken maintenance of the northern section of the Sand Street drain in the past, except for a letter dated 4 July 2001 by the then Manager Works (attached). This letter acknowledges that unspecified maintenance was carried out on the drain north of the Stirling Land in 1995. This may have been in conjunction with works shown on the 1995 aerial imagery associated with the Chinderah Bypass.

Unfortunately no further details exist in Council records. The letter did specify that Council has not maintained the section of drain encroaching on the Stirling Land.

OPTIONS:

Based on the lack of historic information regarding the Sand Street drain, Council could advise the landholder that it either:

1. Denies ownership and maintenance responsibility of the drain through the Stirling Land, or
2. Accepts ownership and maintenance responsibility of the drain through the Stirling Land.

Option 1 is the recommendation of this report.

CONCLUSION:

Given the timeframe over which the drainage works appear to have occurred and the lack of approvals and similar information retained at that time on Council records, a definitive response to the matters contained in the July 2016 resolution cannot be provided. However based on the evidence available, Council does not appear to be significantly implicated in the drain encroachment on the Stirling Land.

COUNCIL IMPLICATIONS:

a. Policy:

Corporate Policy Not Applicable

b. Budget/Long Term Financial Plan:

Not applicable

c. Legal:

Yes, preliminary legal advice has been received.

At meetings between the Stirlings and Council Officers and Executives the Stirlings expressed their frustration about Council's lack of information regarding the drain encroachment on their land, and the perceived inadequacy of the response to the GIPA application. Given the passage of time and lack of information available, the Stirlings were advised that only legal proceedings will bring their quest for compensation to a conclusion. The Stirlings apparent view is that Council's lack of information indicates liability for the works being carried out. No legal opinion has been provided by the Stirlings to support this position.

Following these discussions Council Officers sought preliminary legal advice on the issues. The subsequent advice was that the assertion that Council is liable unless it can prove otherwise is tenuous – the absence of information does not prove liability. The advice referred to the principle of “presumption of regularity” which says that if something has operated in its current form for a long time it is presumed to have been carried out appropriately and lawfully. This principle might be applicable in this case. The passing of time in itself is not a defence, but is likely to work against the landholder in any effort to

REPORTS FROM THE DIRECTOR CORPORATE SERVICES

9 [CS-CM] In Kind and Real Donations - April/May/June 2016

SUBMITTED BY: Financial Services

Valid



Civic Leadership

LINKAGE TO INTEGRATED PLANNING AND REPORTING FRAMEWORK:

- 2 Supporting Community Life
 - 2.1 Foster strong, cohesive, cooperative, healthy and safe communities
 - 2.1.3 Provide opportunities for residents to enjoy access to the arts, festivals, sporting activities, recreation, community and cultural facilities
-

SUMMARY OF REPORT:

Details of in kind and real donations for the period April/May/June 2016 are reproduced in this report for Council's information.

RECOMMENDATION:

That Council notes the total donations of \$238,977.48 for the period April/May/June 2016.

REPORT:

Council maintains a register of in kind and real donations. Details of these donations for the period **April/May/June** 2016 are reproduced as follows:

In Kind and Real Donations - April/May/June 2016

Financial Assistance			
Amount	Recipient	Donated Item	Date
\$12,000.00	Tweed Landcare Inc	Budget Allocation - Donation (Filling the Gaps - Environmental Trust Project)	01/03/2016
\$5,761.81	Stamala Pty Ltd	Budget Allocation - Heritage Conservation & Demonstration Project - Look Up	20/04/2016
\$4,000.00	The Presbyterian Church NSW Property Trust	Budget Allocation - Local Heritage Assistance Fund	27/04/2016
\$2,000.00	P & G Clifton	Budget Allocation - Local Heritage Assistance Fund	27/04/2016
\$115,892.00	Salt Surf Lifesaving Club Inc	Budget Allocation - s94 Contributions	03/05/2016
\$4,775.48	Austral Café	Budget Allocation - Heritage Conservation & Demonstration Project - Look Up	11/05/2016
\$7,885.95	A Sandhu	Budget Allocation - Heritage Conservation & Demonstration Project - Look Up	11/05/2016
\$13,660.00	Marine Rescue Point Danger	Budget Allocation - Annual Donation	25/05/2016
\$28,587.00	Tweed District Rescue Squad Inc	Budget Allocation - Annual Donation	26/05/2016
\$11,500.00	Careflight Group Limited	Budget Allocation - Annual Donation	26/05/2016
\$1,000.00	Uniting Preschool Murwillumbah	Donation - Community Sponsorship 2016	08/06/2016
\$500.00	Tyalgum Community Hall Association	Donation - Community Sponsorship 2016	08/06/2016
\$750.00	Caba Creative Inc	Donation - Community Sponsorship 2016	08/06/2016
\$750.00	Dragons Abreast MT Warning	Donation - Community Sponsorship 2016	08/06/2016
\$2,000.00	Tweed Byron Life Education Action Group	Donation - Community Sponsorship 2016	08/06/2016
\$3,000.00	Tumbulgum Community Association	Donation - Community Sponsorship 2016	08/06/2016
\$750.00	Pottsville Beach Neighbourhoods Centre Inc	Donation - Community Sponsorship 2016	08/06/2016
\$2,000.00	Tweed palliative Support	Donation - Community Sponsorship 2016	08/06/2016
\$1,000.00	Team Koala	Donation - Community Sponsorship 2016	08/06/2016
\$2,000.00	Beachside Communicare Inc	Donation - Community Sponsorship 2016	08/06/2016
\$2,123.00	Tweed Byron Local Aboriginal Land Council	Donation - NAIDOC Week Celebrations	29/06/2016
\$2,713.50	International Riverfoundation	Budget Allocation Balance	30/06/2016
\$224,648.74			

Financial Assistance			
Amount	Recipient	Donated Item	Date
Goods and/or Materials			
\$45.00	Tweed Seniors Committee	Printing	02/04/2016
\$25.00	Kinship Festival	Printing	April
\$4.00	South Tweed over 50's Friendship Club	Printing	23/05/2016
\$1.00	Tweed Byron Local Aboriginal Land Council - NAIDOC Week	Printing	24/06/2016
\$48.00	Tweed Land Care Committee	Printing	April/May/June
\$123.00			
Provision of Labour and/or Plant & Equipment			
Amount	Recipient	Donated Item	
\$900.22	Salvation Army	Dumping Fees - Stotts Creek Landfill	April/May/June
\$107.73	You Have a Friend	Dumping Fees - Stotts Creek Landfill	April/May/June
\$682.92	Tweed Valley Opportunity Shop	Dumping Fees - Stotts Creek Landfill	April/May/June
\$639.10	RSPCA	Dumping Fees - Stotts Creek Landfill	April/May/June
\$1,444.37	Tweed Palliative Support	Dumping Fees - Stotts Creek Landfill	April/May/June
\$1,648.15	On-Track Community Programs	Dumping Fees - Stotts Creek Landfill	April/May/June
\$549.63	St Vincent de Paul	Dumping Fees - Stotts Creek Landfill	April/May/June
\$175.30	The Surf Club - Kingscliff	Dumping Fees - Stotts Creek Landfill	April/May/June
\$1,950.18	Life Education Van Relocation	Provision of Labour & Council Plant	April/May/June
\$189.73	RSL Murwillumbah - ANZAC Day	Provision of Labour & Council Plant	April/May
\$388.90	Seniors Week	Provision of Labour & Council Plant	08/04/2016
\$380.68	Rotary Club	Provision of Labour & Council Plant	13/05/2016
\$2,014.59	Battle of the Border -Cycling Festival	Provision of Labour & Council Plant	June
\$179.76	Cobaki Community	Provision of Labour & Council Plant	17/06/2016
\$205.44	Cooly ROCKS	Provision of Labour & Council Plant	17/06/2016
\$11,456.70			
Rates			
Amount	Recipient	Donated Item	
\$280.80	Twin Towns Police and Community Youth Club	Water Usage	13/04/2016
\$106.80	Twin Towns Police and Community Youth Club	Sewer Usage	13/04/2016
\$387.60			

Financial Assistance			
Amount	Recipient	Donated Item	Date
Tweed Link Advertising			
\$83.16	Community Notices - Banora Point and District Residents Assoc	Advertising	April/May/June
\$64.35	Community Notices - Burringbar Community Association	Advertising	April/May/June
\$57.60	Community Notices - Cabarita Beach/Bogangar Residents Association	Advertising	April/May/June
\$112.41	Community Notices- Casuarina and South Kingscliff Residents Assoc Inc	Advertising	April/May/June
\$83.16	Community Notices - Chinderah District Residents Assoc	Advertising	April/May/June
\$25.65	Community Notices - Cudgen Progress Assoc	Advertising	April/May/June
\$83.16	Community Notices - Kingscliff Ratepayers and Progress Assoc	Advertising	April/May/June
\$43.20	Community Notices - Pottsville Community Assoc	Advertising	April/May/June
\$27.00	Community Notices - Tumbulgum Community Assoc Inc	Advertising	April/May/June
\$122.85	Community Notices - Tyalgum District Community Assoc	Advertising	April/May/June
\$83.16	Community Notices - Uki Residents Assoc	Advertising	April/May/June
\$80.19	Tweed Markets (previously PCYC)	Advertising	April/May/June
\$44.55	University of the Third Age (U3A) Tweed Coast Inc	Advertising	April/May/June
\$910.44			
Room Hire			
Amount	Recipient	Donated Item	
\$84.00	Banora Point & District Residents Association	Room Hire - Banora Point Com Centre	April/May/June
\$121.00	Twin Towns Friends Association	Hall Hire - South Tweed Community Hall	18/05/2016
\$162.00	Twin Towns Friends Association	Room Hire - South Tweed HACC	April/May/June
\$183.00	Red Cross Training	Room Hire - South Tweed HACC	April/May/June
\$72.00	Tweed Community Care Forum	Room Hire - South Tweed HACC	April/May/June
\$220.00	Tweed Hospital Auxiliary	Hall Hire - Tweed Heads Civic Centre Auditorium	27/05/2016
\$174.00	Tweed Hospital Auxiliary	Room Hire - South Sea Islander Room	May/June
\$435.00	South Sea Islanders Community	Room Hire - South Sea Islander Room	April/May/June
\$1,451.00			
\$238,977.48	Total Donations 4th Quarter (April,May,June 2016)		

OPTIONS:

Not Applicable.

CONCLUSION:

For Councillor's Information and inclusion in Annual Report.

COUNCIL IMPLICATIONS:

a. Policy:

Donations and Subsidies Version 1.2.

b. Budget/Long Term Financial Plan:

As per Budget estimates.

c. Legal:

Not Applicable.

d. Communication/Engagement:

Inform - We will keep you informed.

UNDER SEPARATE COVER/FURTHER INFORMATION:

Nil.

10 [CS-CM] Monthly Investment and Section 94 Development Contribution Report for Period ending 31 August 2016

SUBMITTED BY: Financial Services

Valid



Civic Leadership

LINKAGE TO INTEGRATED PLANNING AND REPORTING FRAMEWORK:

- 1 Civic Leadership
 - 1.3 Delivering the objectives of this plan
 - 1.3.1 Council's organisation will be resourced to provide the essential services and support functions to deliver the objectives of this Plan
-

This report is provided to Council to advise details of monies Council has invested in accordance with Section 625 of the Local Government Act 1993.

There is a requirement by Council's investment consultant to allow at least five working days following the end of the month to provide the statistics for this report. Due to this time constraint and the Council requirement to receive reports 10 days prior to the Council meeting, there will be an addendum report provided to Council for consideration at its meeting on 15 September 2016.

RECOMMENDATION:

Refer to addendum report.

REPORT:

As per summary.

OPTIONS:

Not Applicable.

CONCLUSION:

Not Applicable.

COUNCIL IMPLICATIONS:

a. Policy:

Corporate Policy Not Applicable

b. Budget/Long Term Financial Plan:

Not Applicable.

c. Legal:

Local Government (General) Regulations 2005 - Section 212 - Reports on council investments

"(1) The responsible accounting officer of a council:

(a) must provide the council with a written report (setting out details of all money that the council has invested under section 625 of the Act) to be presented:

- (i) if only one ordinary meeting of the council is held in a month, at that meeting, or*
- (ii) if more than one such meeting is held in a month, at whichever of those meetings the council by resolution determines, and*

(b) must include in the report a certificate as to whether or not the investment has been made in accordance with the Act, the regulations and the council's investment policies.

(2) The report must be made up to the last day of the month immediately preceding the meeting."

d. Communication/Engagement:

Inform - We will keep you informed.

UNDER SEPARATE COVER/FURTHER INFORMATION:

Nil.

ORDERS OF THE DAY



Civic Leadership

LINKAGE TO INTEGRATED PLANNING AND REPORTING FRAMEWORK:

- 1 Civic Leadership
 - 1.2.1 Council will be underpinned by good governance and transparency in its decision making processes
-

11 [NOM] Pottsville Men's Shed - Ideal Central Location

NOTICE OF MOTION:

Councillor K Milne moves that Council brings forward a report to the next Council meeting on the proposed future use of the Crown Land areas located behind the existing Pottsville Rural Fire Service and SES, and the potential of all parties to work together to provide for a site for the Pottsville Men's Shed in this location, in accordance with Council's previous resolution of 21 August 2014 "to pursue alternative sites" including future development or appropriately zoned sites that could accommodate the Men's shed in the longer term on a permanent basis.

Councillor's Background Notes

These Crown land areas are currently under investigation licence to the pre school for expansion but now the pre-school has determined their footprint further public land will be available for community use.

This locality would provide an excellent location for the Men's Shed, being more centrally located to town, in a complex with other compatible and complimentary community services, and in close proximity to benefit both the school and preschool.

Ideally the Men's Shed, Rural Fire Service (RFS) and State Emergency Service (SES) would all work together to accommodate each other's needs and provide mutually beneficial facilities.

Recommended Priority:

Nil.

Description of Project:

Nil.

Management Comments:

Delivery Program:

Valid



Supporting Community Life

LINKAGE TO INTEGRATED PLANNING AND REPORTING FRAMEWORK:

2	Supporting Community Life
2.1	Foster strong, cohesive, cooperative, healthy and safe communities
2.1.1	Work closely with government and community organisations to improve services to children and families, youth, elderly, Indigenous people, disadvantaged and minority groups and to build stronger and more cohesive communities

A development application for the construction and operation of a community facility (men's shed) on the Black Rocks sports field was approved in December 2015 (DA15/0160).

The development application included ecological and planning assessment by Council's environmental scientists, planners and ecologists. Assessment of the development application included input from the NSW Office of Environment and Heritage and consultation with the community. The development assessment was undertaken by an external planning consultant (at a cost of \$21,000) and recommended for approval.

The Pottsville and District Men's Shed advised that they placed a deposit for the supply and construction of a shed on 5 August 2016 and have lodged documentation for a construction certificate.

The proposed alternative location on Lot 3 DP1062338 Centennial Drive at Pottsville does not offer any ecological advantage as:

- The exact suite of threatened species that were a consideration at Black Rocks occur at Centennial Drive including proximal and on site breeding records of koala and bush stone curlew. An osprey nest is located within 430 m from the site at the Pottsville North Holiday Park.
- The shed location at Black Rocks is proximal (20 m separation) to vegetation on one side only with between 50 and 150 m separation from vegetation on the three other sides. A shed at Pottsville would be adjacent (within approximately 20 – 35 m) to vegetation on 3 sides.
- The proximal vegetation at Pottsville includes areas mapped as *Preferred Koala Habitat* under the Tweed Coast Comprehensive Koala Plan of Management and other vegetation likely to qualify as environmental zone subject to application of the Far North Coast Ezone review criteria.
- The proximity of vegetation at Pottsville may result in a requirement to clear vegetation to establish asset protection zones.

- The existing area of disturbance was previously a rubbish dump and has been identified by Parks and Recreation and Natural Resource Management units for restoration with an aim of establishing bush stone curlew and koala habitat.
- The proposed site is within 150 m of Cudgera Creek.
- Assessment of the proposed Pottsville Preschool development application is current. The suggested alternative location for the men's shed is immediately adjacent to the proposed preschool expansion and thus consideration of any combined impact of the two proposed developments/structures would be required. .

Budget/Long Term Financial Plan:

The costs to date to attain approvals for the Men's Shed at Black Rocks Sportsfields are \$51,000 (including the external planning assessment costs of \$21,000)

The costs to attain approvals for the proposed site would be similar or greater as at least the same level of review of impacts would be required.

Legal Implications:

Council resolutions regarding the use of Black Rocks Sports Fields for a Man's Shed facility include the following:

17 July 2014:

"... that Council supports the Pottsville and District Men's Shed request to construct and operate a Men's Shed facility at the Black Rocks Sports Fields."

21 August 2014:

"...

- 1. That in the event that the Pottsville Men's Shed seeks a licence or lease to operate from the site at the Black Rocks Sports Field that Council consider granting a limited use licence to operate the Men's Shed for a maximum term of 5 years at the site;"*

16 October 2014:

"... that Council prepares and lodges the Development Application or Part 5 Application (whichever is applicable) for a Men's Shed at Lot 301 DP 1125090 (Black Rocks Sports Field), in accordance with their concept design and the Council resolution of 21 August 2014, whereby the construction is to be of the type that it can be fully dismantled and reassembled at an alternative site."

From these resolutions and the existing development approval, the Men's Shed may also request reimbursement from Council for any financial expenditure or loss incurred as a result of a requirement to change location at this point in time.

Policy Implications:

Any vegetation clearing required would be subject to Tweed Coast Comprehensive Koala Plan of Management including requirement for offsets if applicable.

12 [NOM] Green Energy Investment

NOTICE OF MOTION:

Councillor K Milne moves that Council brings forward a report on undertaking large scale investment in greenhouse gas emissions reductions in light of rapidly worsening Climate Change.

Councillor's Background Notes

Recommended Priority:

Nil.

Description of Project:

Nil.

Management Comments:

Delivery Program:

Validms



Supporting Community Life

LINKAGE TO INTEGRATED PLANNING AND REPORTING FRAMEWORK:

- | | |
|-------|---|
| 1 | Civic Leadership |
| 1.3 | Delivering the objectives of this plan |
| 1.3.1 | Council's organisation will be resourced to provide the essential services and support functions to deliver the objectives of this Plan |
-

It is advised that 70% of Council's greenhouse gas emissions are generated from electricity use. The Renewable Energy Action Plan (REAP) is proposed to be developed, commencing November 2016 and expected to be completed by 30 June 2017 at the latest. This Plan will provide advice to Council on the contribution we can make towards achieving our carbon footprint reduction target (20% of our 1996 level) from renewable energy investment.

Therefore, management recommends a review of greenhouse gas reduction options following the completion of the Renewable Energy Action Plan.

Budget/Long Term Financial Plan:

Any review of carbon reduction options would need to consider budget implications.

Legal Implications:

Not applicable.

Policy Implications:

Report would be consistent with the 2003 Tweed Community Greenhouse Gas Reduction Local Action Plan.

13 [NOM] Food For Thought Forum

NOTICE OF MOTION:

Councillor K Milne moves that Council:

- 1. Notes the enthusiasm of the participants of Council's Food for Thought Forum and commends staff for a very successful event.**
- 2. Brings forward a report on the outcomes of the Forum and a quarterly on progress in the areas relevant to Council including but not limited to:**
 - a) Potential for becoming a signatory to the "Urban and Regional Food Declaration".**
 - b) Options for developer contribution fees to be reduced / waived for a period to foster these small business and farm industries.**
 - c) Planning controls to designate 'clean green zones' in industrial areas to provide for sensitive/organic industry areas, so these businesses are not at risk of incompatible neighbouring businesses moving in afterwards that may use harsh chemicals etc.**

Councillor's Background Notes

Recommended Priority:

Nil.

Description of Project:

Nil

Management Comments:

Delivery Program:

Validms



Strengthening the Economy

LINKAGE TO INTEGRATED PLANNING AND REPORTING FRAMEWORK:

- | | |
|-------|---|
| 3 | Strengthening the Economy |
| 3.1 | Expand employment, tourism and education opportunities |
| 3.1.7 | Establish planning controls that support businesses and promote the growth of home-based industries |
-

The following response is provided in relation to Item 2:

- a) The Urban and Regional Food Declaration developed by Sustain: The Australian Food Network aligns with a number of objectives in the Tweed Sustainable Agriculture Strategy. The declaration states that:

'Our food system should support, create and sustain local and regional livelihoods while building a resilient food industry:

2.2 *With financing and co-financing of prioritized aspects of the food system built into all relevant municipal annual budgets and services spending."*

In recognition of our support of the National Food Hubs Tour and hosting the Food for Thought Forum, Council has received an invitation from Dr Nick Rose the Executive Director of Sustain, offering Council a complimentary one-year affiliate membership of Sustain which is worth \$1,000.

The mission of Sustain is to work together with governments, the public and community health sector, research institutions and other key food system stakeholders across the public, private and community sectors, to support the development of food systems that are fair, connected, healthy and sustainable.

The invitation and offer to become an affiliate of Sustain for the next twelve months will provide Council with a range of discounts on attending Sustain events and consultancy and research services and along with access to online tools and resources.

Sustain works with partners around the country, making sure that their members are kept fully abreast of developments, and explore opportunities for collaboration of further events and related activities.

A report on the outcomes of the Food for Thought Forum will be tabled at the October Council meeting. The report will include recommendations for Council's on-going involvement in local food initiatives and include comment around the Urban and Regional Food Declaration and policy implications of Council becoming a signatory.

Progress reports on the Tweed Sustainable Agriculture Strategy, Economic Development Strategy and Events Strategy are brought to Council on an annual basis and additional progress can be provided as necessary.

- b. Council recently went through the process of development, exhibition and adoption of the Business Investment Policy which provides a raft of opportunities for small business including farm industries to benefit from substantial reductions and deferred payment mechanisms for Developer Contributions. Notably an employment generating business, even if it only employs 1 person, is provided with a 40% discount on Tweed Road Contribution Plan charges. Change of use development less than 500 square metres receives a 100% discount to Tweed Road Contributions. In addition to this a proponent of a business development has the option of upfront payment of Water and Sewer contributions or the payment of the same as a High Consumption charge which effectively offsets the cost over a 40 year period.

Given that this Policy was only adopted in August of this year and its impacts have yet to be determined including, the loss of income to the Tweed Road Contribution Plan, it is recommended that any additional relief as proposed in this motion be deferred until a full review is undertaken in 2 years as per the adopted policy.

- c. In relation to establishing a designated 'clean green zones' area within industrial areas it needs to be noted that the use of land is regulated within the zoning schedules of the

local environmental plans (LEP), and that there is presently no provision or mechanism to direct or regulate the segregation of land within a zone for one use or purpose over another. Within an industry zone the uses permitted with consent or permitted without consent cannot likewise be controlled by a development control plan, as this would raise an inconsistency, which the parent legislation is very specific in ensuring that the land use zoning schedules prevail. This does not prevent a willing developer to establish an industry site that they themselves elect to regulate for 'green' or organic use purposes, and they may themselves seek to burden their land with covenants on their Title, however it is a tenuous approach and one that lacks the requisite certainty for securing the long term use in the face of competing and less restrictive land-use zoning schedule.

Budget/Long Term Financial Plan:

There may be budget implications associated with Item 2 a) becoming a signatory to the Urban and Regional Food Declaration that require consideration.

In relation to Item 2 b) of the Motion a reduction or deferral in developer contributions will have impacts on Council's ability to be able to fund the works in each Plan in the long term.

Legal Implications:

There is unlikely to be any legal implications associated with becoming a signatory to the Urban and Regional Food Declaration.

Policy Implications:

The Tweed Sustainable Agriculture Strategy, Economic Development Strategy and Events Strategy identify a number of local food-related activities that council plans to support but these are subject to available funding and staff resources and depend on the cooperation with a number of external stakeholders.

REPORTS FROM SUB-COMMITTEES/WORKING GROUPS

14 [SUB-TRAG] Minutes of the Tweed Regional Art Gallery Advisory Committee Meeting held Wednesday 10 February 2016

SUBMITTED BY: Community and Cultural Services

Valid



Supporting Community Life

LINKAGE TO INTEGRATED PLANNING AND REPORTING FRAMEWORK:

- 2 Supporting Community Life
 - 2.1 Foster strong, cohesive, cooperative, healthy and safe communities
 - 2.1.3 Provide opportunities for residents to enjoy access to the arts, festivals, sporting activities, recreation, community and cultural facilities
-

SUMMARY OF REPORT:

The Minutes of the Tweed Regional Gallery Advisory Committee Meeting held Wednesday 10 February 2016 are reproduced in the body of this report for the information of Councillors.

RECOMMENDATION:

That the Minutes of the Tweed Regional Gallery Advisory Committee Meeting held Wednesday 10 February 2016 be received and noted.

REPORT:

The Minutes of the Tweed Regional Gallery Advisory Committee Meeting held Wednesday 10 February 2016 are reproduced as follows for the information of Councillors.

Venue:

Tweed Regional Gallery - Friends Meeting Room.

Time:

5.00pm.

Present:

Clr Warren Polglase (Chair), Clr Phil Youngblutt, Robert Dagworthy AM, Louise Devine, Lyn Stewart, Shirley Kennedy, Susi Muddiman OAM (Director) Gregory Puch (Minutes)

Apologies:

Katerina Primikiri-Mackney, Jo Nimmo, Stephen Senise, Robyn Grigg (Manager Community and Cultural Services), Tracey Stinson (Director Community and Cultural Services).

Absent:

Hobie Porter, Judith Sutton.

MINUTES OF PREVIOUS MEETING

Moved: Cr Phil Youngblutt

Seconded: Shirley Kennedy

RESOLVED that the Minutes of the Tweed Regional Art Gallery Advisory Committee meeting held Wednesday 11 November 2015 be accepted as a true and accurate record of the proceedings of that meeting.

BUSINESS ARISING FROM PREVIOUS MINUTES

A1 Art Gallery Director's Report

The Young Archibald Prize 2015 was well received. The Director acknowledged the art packs provided courtesy of the Friends, and also the catering. Louise was acknowledged for writing up the event for the Mt. St. Patrick's College school newsletter.

It was advised that Sarah Harvey, Casual Project Officer for The Young Archies, has secured a permanent role at Lismore Regional Gallery.

The new Gallery car park has been completed and has been operating well for the *Archibald Prize 2015*.

AGENDA ITEMS

1. Gallery Director's Report

Report of the Art Gallery Director submitted to the Art Gallery Advisory Committee
Wednesday 10 February 2016

Subject: Officer's Report
Author: Susi Muddiman
Manager: Robyn Grigg, Manager Community and Cultural Services

Resolved: That the report by the Art Gallery Director be received for information.

VISITORS TO THE GALLERY:

For the period since the previous meeting of the AGAC on 20 May 2015, the Gallery welcomed 36,708 visitors (at 31/1/16). The number of visitors through the Gallery since the official opening of the Margaret Olley Art Centre (MOAC) on 15/03/2014 is 238,371.

The following information covers the period of Friday 20 November 2015 – Sunday 10 January 2016.

This exhibition period showcased:

THE TEMPORARY EXHIBITIONS GALLERY

Stephen Bird: Bastard Son of Royal Doulton

A survey show of ceramics and works on paper, 1992 – 2013.

This exhibition surveys the past 20 years of Bird's practice; and includes paper constructions, watercolours, ceramics and mosaics. The works on display showcase the artist's mastery of glazing techniques, applied decoration on ceramics, dazzlingly bright watercolours and intense graphic detail of works on paper. His deliberate use of industrial techniques and materials of his hometown Stoke-on-Trent, the town in which Royal Doulton, Spode and Wedgwood were founded, form a practice he has dubbed 'Industrial Sabotage'. A Wollongong Art Gallery touring exhibition, supported by the Gordon Darling Foundation.

Ken + Julia Yonetani: The Last Supper A sculptural installation that addresses themes of food production, concerns arising from the level of salinity in Australia and related environmental impacts. The large-scale work is made entirely from salt, taking the form of a nine metre table laid with a variety of foodstuffs. A Hazelhurst Regional Gallery & Arts Centre commissioned project toured by Museums & Galleries of NSW.

THE MARGARET OLLEY ART CENTRE (MOAC)

The MOAC combines exhibitions of paintings and objects, an interactive multi-media drawing activity, research library and education workshop, and is complemented by the Nancy Fairfax Artist in Residence Studio. Central to the MOAC is the recreation of areas of Olley's famous home studio, principally the Hat Factory and the Yellow Room.

48 Duxford Street: re-creating Margaret Olley's home studio is an exhibition of paintings, photographs and architectural plans that explores the story of the re-creation of Olley's home studio at Tweed Regional Gallery.

THE WITHEY FAMILY GALLERY

Director's Choice: works from the collection: a selection that includes Australian portraiture, artists' prints, and works inspired by the Tweed region, by artists of the region, and by Margaret Olley and her contemporaries.

THE BOYD GALLERY

Big River Karlee Rawkins created an imagined river location for this exhibition, populated with plants and animals depicted in the artist's distinct style. Demonstrating her skill across an array of media, this show included paintings, drawings, prints and a short film that provides further insight into her life and practice. An outcome of the Community Access Exhibitions Program.

THE ANTHONY GALLERY

Until 22 November *David Preston: works from the collection* selected from over 50 linocuts gifted to the Gallery by the artist. These prints reflect the interiors and landscapes of places he has lived in, and travelled to.

From 27 November *Mark Tedeschi: shooting around corners* showcases selected works by Mark Tedeschi AM QC representing his prolific, award winning photographic practice over the past 25 years. A Maitland Regional Art Gallery touring exhibition

THE FRIENDS GALLERY

Until 13 December *Carving Light and Landscape* As a recipient of a funded residency in the Nancy Fairfax Artist-in-Residence Studio from 9 - 29 October 2015, Nicholas Harding worked 'live' in the Friend's Gallery, creating a large-scale composition relating to the landscape of our region, a large drawing and a series of works to create a site-specific display.

From 16 December *Animal Self* Joanna Braithwaite's *Chook, Chook, Chook (Self Portrait)*, a work from the Gallery's collection, is the visual and conceptual focus of this activity space for children. Visitors have the opportunity to interact with a number of Braithwaite's playful artworks, creating their own pieces to leave in the display or take home.

THE MACNAUGHTON FOCUS GALLERY

Still A series of recent paintings by Mullumbimby artist Dale Rhodes depict familiar everyday objects including lemons, mangos, apples, paper bags, jugs and magnolias. Rhodes says, "They are not about anything except pure visual experience – moments of absolute seeing, with no thinking, message or meaning attached." An outcome of the Community Access Exhibitions Program.

ATTENDANCES

Exhibition period open to the public for 35 days
Rawkins and Rhodes 39 days 14,362

Opening Function 136

Community Groups 286 Destination Tweed (28), The Friday Clubbers (6), Aldinga Tours (36), Sinclair Tours and Travels (18), Burleigh Seniors (50), Probus Club – Tindale (39), Cross Country Tours (46 + 28), Great Valley Holidays (35).

Education Groups 147 Southport Special School (14) Distance Education (27), Miami HS (12), Murwillumbah East PS (94).

NOTE: These exhibition dates included Christmas, New Year and summer school holiday periods, which is the primary reason for the relatively low attendance numbers by Community and Education groups.

Total Attendances: 13,770
Rawkins and Rhodes 14,362

PUBLIC PROGRAMS

On Friday 20 November at 5.15pm DST Grace Cochrane AM, independent writer, curator and consultant, and curator of Stephen Bird: Bastard Son of Royal Doulton presented a preview floor talk on the exhibition. This was attended by 30 people

This was followed at 6.00pm by the official opening function with 136 people in attendance. Deidre Currie, a descendent of the traditional owners of this land provided a Welcome to Country in song. Artist and teacher Virginia Reid officially opened Still by Dale Rhodes with beautiful heartfelt words. Big River by Karlee Rawkins was opened by Anthea Polson of Anthea Polson Art, who is also a Member of the Tweed Regional Gallery & Margaret Olley Art Centre Foundation.

Local canegrower and researcher Robert Quirk opened Ken + Julia Yonetani: The Last Supper, warning of the effects of global warming on the land and farming. The final speech of the night was delivered by curator, Grace Cochrane AM, who opened Stephen Bird: Bastard Son of Royal Doulton.

On Sunday 22 November 2015, Karlee Rawkins set up in the Gallery foyer from 10.30am-12.30pm DST for a Free Artist Demonstration which gave an insight into her creative process through a display of printmaking plates, drawings and objects of inspiration. Approximately 40 members of the public actively engaged with the artist during this time.

On Sunday 10 January 2016 the Gallery hosted a "Salt Dough Supper" in the Gallery Foyer. Members of the public were invited to participate in this free activity facilitated by artist and tutor Carleen Joy. Running over two sessions at 10.30am and 1.00pm, approximately 75 people created food items from salt dough, which were displayed in the foyer window for the duration of the afternoon.

EDUCATION

Volunteer Gallery Guides

One or two free guided tours were presented daily (Wednesday – Sunday) from 11.30am to the general public. Community groups who book their visit can request a special tour hosted by Volunteer Gallery Guides. The Gallery now charges \$2.00 pp for these tours with the proceeds supporting Education Programs. The group tours include the history of the Gallery

and exhibitions on display, including MOAC. These have been incredibly popular with groups and we are taking bookings many months in advance.

Weekly Guided Tours	Total tours	Total numbers attended
Guided tours were conducted by Volunteer Gallery Guides each day at 11.30am during the exhibition period	55	334
Special booked Guided tours for bus groups, conducted by Volunteer Gallery Guides either at 10.30am or 1.30pm	9	173

Guide Training and Changeover Meetings with EADO:

During these sessions Education Resources for new exhibitions were distributed and discussed. The Guides viewed the exhibitions with a focus on significant works were discussed. The training session scheduled for Thursday 19 November was cancelled as the new Education Officer had not been appointed. Education resources for the exhibitions; *Ken & Julia Yonetani: The Last Supper*, *Stephen Bird: Bastard Son of Royal Doulton*, *Mark Tedeschi: shooting around corners*, *Big River*. Karlee Rawkins, *Still*: Dale Rhodes and *Animal Self* were emailed and printed for Volunteer Guides to collect.

Education Resources

The Gallery's Education and Audience Development Officer (EADO) contacted any schools and community groups that made bookings prior to their visit to discuss their needs and requirements, and available educational resources. If requested, groups were provided with an introductory talk on the Gallery and exhibitions on display. Education resources were distributed and discussed during Volunteer Guide Training sessions, and were utilised for the Gallery Guided Tours.

Ken + Julia Yonetani: The Last Supper

Education Resources were made available on the Gallery's website but unfortunately downloads cannot be tracked at this stage. Although we found these resources to be extremely comprehensive with excellent Pre and Post-visit activities, we anticipate that the Resources would not have been utilised to a great extent by teachers due to the timing of the exhibition (end of Term 4 and over school holidays).

In addition, an ABOUT sheet which included a brief overview of the content of the exhibition and information about the artist(s), was compiled by the EADO and distributed to Gallery Guides to assist with their preparation for guiding groups through the exhibition.

Stephen Bird: Bastard Son of Royal Doulton

An ABOUT sheet which included a brief overview of the content of the exhibition and information about the artist(s), was created and distributed to Gallery Guides to assist with their preparation for guiding groups through the exhibition.

Big River – Karlee Rawkins

An ABOUT sheet which included a brief overview of the content of the exhibition and information about the artist(s), was created and distributed to Gallery Guides to assist with their preparation for guiding groups through the exhibition.

Still – Dale Rhodes

An ABOUT sheet which included a brief overview of the content of the exhibition and information about the artist(s), was created and distributed to Gallery Guides to assist with their preparation for guiding groups through the exhibition.

ART SALES

Karlee Rawkins

Two (2) works, the spectacular painting titled Dingo Drink and work on paper titled Cormorant, were purchased by the same buyer for a total retail price of \$7,800.

Dale Rhodes

Four (4) works titled Lemon, Magnolia, Lemons and Bag, were purchased through the Gallery for a total retail price of \$5,400. A local art collector purchased three additional works on display from the artist just prior to exhibition.

EXHIBITION CATALOGUES and MERCHANDISE

Stephen Bird: Bastard Son of Royal Doulton – this well-priced and brilliantly coloured catalogue proved to be popular with Gallery visitors, and our total stock of 25 copies were sold through the Gallery shop. At the very reasonable wholesale price of \$6.00 each, the catalogues sold for a retail price of \$9.00 each. These sales led to a total Gallery profit of \$68.18 (ex GST).

PROMOTION

Website – <http://www.tweed.nsw.gov.au/artgallery> - includes general information on the Gallery's exhibition schedule and other specific exhibition related material eg: education resources and links to touring agencies websites.

During this exhibition period the Gallery's "Current Exhibitions" webpage attracted 2,008 page views.

Other online listings include:

Museums & Galleries NSW

www.mgnsw.org.au

Arts Northern Rivers

www.artsnorthernrivers.com.au

Echonet daily (online)

www.echonetdaily.net.au

Gold Coast Bulletin

www.whatson.goldcoastbulletin.com.au

Live Guide

www.liveguide.com.au

Media Releases – distributed widely through the Tweed Shire Council's Customer and Communication Services Unit.

Invitations – 2,500 copies distributed. 1,500 to the Friends of the Gallery mail list, with additional copies distributed to mail lists of relevant agencies, touring bodies, exhibiting artists, local media, education and tourism facilities and Gallery visitors.

Gallery Exhibition Program – 5,000 distributed to Friends of the Gallery mail list, arts and media organisations, schools, tourism operators and Gallery visitors.

Advertisements – advertising schedule may include national periodicals (eg: Imprint, Art Monthly), local newspapers (eg: Daily News online), free publications (eg: Tweed Sun, The Weekly, Byron Echo,) and the Tweed Shire Council newsletter (Tweed Link) distributed to all Shire households.

Art Monthly	# 285 November 2015 (Bird, Rhodes and Rawkins only) #286 December 2015
Art Almanac	November 2015 (Yonetani, Rhodes only)
Tweed Valley Weekly	26/11/15, 10/12/16, 17/12/16
North Coast Seniors Revolution	November 2015

MEDIA COVERAGE

The cessation of a number of regional print publications, including the weekly *Tweed Shire Echo* and daily *Tweed Daily News*, has had a significant impact on the coverage and reporting of Gallery exhibitions and events. These publications are now published online only. It is unfortunate and frustrating, that despite the Gallery's inclusion of appropriate image credits, and relevant taglines and logos on all media releases and promotional documents, media agencies regularly fail to include the information in published articles.

See copies of media coverage attached.

General

"Feast of art at Tweed Regional Gallery"	www.echo.net.au	18/11/15
<i>Mark Tedeschi: shooting around corners</i> "Senior prosecutor with an eye for detail visits Tweed"	www.echo.net.au	25/11/16
"Rare insight into the art of justice"	Tweed Daily News	25/11/16

COMMENTS - Excerpts from the Visitor Comment Book

General

- Absolutely breathtaking, one of the best galleries in Australia (1770)
- Everything here is good for the soul. (Munruben)
- Wow, wow, wow – leaves other regional galleries for dead! (Toowoomba)
- It is always a pleasure to visit this gem on the Tweed. (Sydney)
- A wonderful display of such a variation of art forms. (Noosaville)
- Great diversity – it is great to see such up-to-date contemporary work. (Canada)
- This wonderful place is always on my odyssey north – back again and not disappointed. (Sydney)
- An excellent display, well worth spreading the word to friends. (Brisbane)
- Such a peaceful, restful and inspirational environment – thank you. (Brisbane)
- A phenomenal find, thank you. Great volunteer staff too! (Townsville)
- This is my new favourite Australian gallery – amazing – thank you. (Sydney)
- A wonderful gallery with awesome art – a great day out! (Sunshine Coast)
- I have come to the area specifically to see this gallery – and I loved it!! Thank you. (Springwood, NSW)
- Love being here as always. (Bendigo)
- It is always uplifting to come here, Thank you for an excellent evening. (Kingscliff)
- An amazing place – one ticked off my bucket list! (Newport)

- It was a very nice experience for us – thank you. (Czech republic)
- I can't think of enough adjectives to describe this place!! Thank you. (Esk)
- Two hours of absolute bliss! (Sunshine Coast)
- Simply breathtaking – thanks so much to volunteer Carleen Joy for her informative and interesting talk. (Brisbane)
- A wonderful guided tour today 12/12/15. (England)
- The best cultural centre of its size I have seen. (NY, USA)
- This whole facility is stimulating and fascinating – thank you. (UK)
- A truly wonderful gallery – and a credit to the region and the benefactors. (Ballarat)
- Gorgeous, a perfectly sized and exquisite gallery. (Hervey Bay)
- Everything you could possibly want in a regional gallery – simply wonderful. (Melbourne)
- Again – excellent exhibitions, loved the photographs and ceramics. (Currumbin)

Ken + Julia Yonetani: The Last Supper

- The Last Supper is quite superb. Its message needs to be publicised to the masses! (Lennox Head)
- A very interesting and informative exhibition. – loved The Last Supper!! (Brisbane)
- Please bring more installations like The Last Supper. (Cleveland)
- Loving the Last Supper – thought provoking and beautiful. (Uki)
- The salt sculpture was amazing - I really appreciated Carleen telling us about it. Thank you. (Lennox)

Stephen Bird: Bastard Son of Royal Doulton

- I loved the Stephen Bird works, but was a bit frustrated that so many were placed on plinths against the wall. (Bogangar)
- I love this Gallery – the Stephen Bird exhibition is the best I have seen! (Bribie Island)
- Very interesting – I loved the Stephen Bird exhibition – and will come again. (UK)
- Move over Grayson Perry! The Stephen Bird exhibit is sheer brilliance! (Brisbane)
- The Last Supper – stunning! (Brisbane)
- The salt Last Supper deserves to be seen in a performance piece – fabulous! (Lismore)
- Stephen Bird – a wonderful exhibition. (Sydney)

Big River: Karlee Rawkins

- Karlee's work is beautiful. (Ocean Shores)

Still: Dale Rhodes

- A beautiful display of still life – I love the fruit! (Kingscliff)
- My friend and I enjoyed everything seen during our gallery visit today, but especially Dale Rhodes 'stills'. Beautiful work. (Bribie Island)
- That is a top banana Dale! (Sydney)
- I loved Still - amazing paintings – with fabulous detail. (Brisbane)

Mark Tedeschi: Shooting around corners

- Loved the photography of Mark Tedeschi – I found it very moving; he knows how to capture emotion. (UK)
- The Mark Tedeschi photographs were great – thank you. (Coolangatta)
- Great still lifes, refreshing and relaxing. Thanks! (Germany)
- Beautiful inside and out – loved the photographs by Mark Tedeschi. (Canada)
- Mark Tedeschi hits the bull's eye – brilliant! (Cootamundra)

Animal Self

- Joanna Braithwaite's work was cool! (Esperance)
- I had so much fun with the dogs and chickens and looking at Mt Warning. I hope I can come back one day. (Ned, East Kempsey)
- I had a wonderful time here colouring in with others there too. (Selby, East Kempsey)
- Wonderful – the Joanna Braithwaite works were simply vibrant! (Yepon)
- Lovely- such a wonderful place to visit with kids. (Thornleigh)

GENERAL BUSINESS

2. RPGNSW Conference

The biennial conference of the Regional & Public Galleries Association of NSW will be held at Tweed Regional Gallery on Monday 14 and Tuesday 15 March 2016. The conference will attract over 60 delegates.

This year the conference is titled *Reframing the Future* and will consider how regional galleries increasingly need to be flexible in their approach. With shifting funding sources, and changing 'entertainment' models, how do we remain relevant? The *Reframing the Future* conference program revolves around short presentations by a range of fascinating speakers, with each session finishing in a panel discussion. Open dialogue and sharing successes is the aim, taking advantage of this biennial opportunity to celebrate, strengthen and evolve the regional and public gallery sector of NSW.

The conference will include keynote addresses by cultural leaders Michael Lynch, CBE, AM, Chris Saines, CNZM and Marcus Westbury, and a conference dinner at Mavis' Kitchen, Uki on the evening of the 14 March.

Conference speakers include:

- Brett Adlington, Director, Lismore Regional Gallery
- Sally Bassar, Executive Director, Ministry for the Arts
- Liam Benson, artist
- John Cheeseman, Director, Mosman Art Gallery
- Karla Dickens, artist
- Troy Green, General Manager, Tweed Shire Council
- Nicholas Harding, artist
- Jacqui Hemsley, Director, Murray Art Museum Albury
- Tim Lynch, Coordinator of Culture Services, Moreton Bay Regional Council
- Michael Lynch, CBE, AM, former CEO, West Kowloon Cultural District Authority, Hong Kong
- Jo MacKellar, Manager, Destination Research

- Margaret Meagher, Executive Director, Arts and Health Australia
- Steve Miller, Aboriginal Programs Manager, Museums & Galleries of NSW
- Susi Muddiman OAM, Director, Tweed Regional Gallery & Margaret Olley Art Centre
- Djon Mundine, OAM, curator and writer
- Jacquie Riddell, Director, Public Engagement, Art Gallery of NSW
- Chris Saines, CNZM, Director, Queensland Art Gallery | Gallery of Modern Art
- Louise Silburn, Director, Transforming Partnerships
- Kris Tito, Arts Development Manager, Accessible Arts
- Craig Walsh, artist
- Sally Watterson, Project Manager – Arts & Culture, Local Government NSW
- Marcus Westbury, CEO, Contemporary Art Precinct
- Frank Zaknich, General Manager, Albury City Council

The 2016 Regional & Public Galleries of NSW conference is a partnership between Regional and Public Galleries of NSW, Museums & Galleries of NSW and the Tweed Regional Gallery & Margaret Olley Art Centre.



TWEED REGIONAL GALLERY &
MARGARET OLLEY ART CENTRE
14-15 MARCH 2016

RPGNSW
Regional and Public Galleries New South Wales Inc.

**Museums
& Galleries
of NSW**

Acquisitions to the Collection

The Committee is asked to ratify the acquisition of 15 artworks to the collection. An acquisitions document generated from the Collection Management System, Vernon, is attached to this report. The majority of these acquisitions are hand coloured prints by artist David Preston, gifted to the Gallery by the artist. The acquisitions also include a work by Norman Lindsay and a traditional watercolour titled *Mt Warning* by well-known artist H.C. Simpson. Both of these works were donations to the collection through the Commonwealth Government's Cultural Gifts Program.

Susi Muddiman OAM, Gallery Director
4 February 2016

Shirley Kennedy asked how the profit from the *Archibald Prize 2015* would be spent. Director Muddiman explained that profits would cover the cost of mounting the exhibition and the balance would be put towards providing additional programs and exhibitions at the Gallery.

Shirley Kennedy noted that local visitors had complained about having to pay each time they visited the *Archibald Prize 2015*. Director Muddiman explained that this was the case for most exhibitions shown in any gallery, nationally or internationally.

Councillor Polglase relayed positive feedback from attendees of the *Archibald Prize 2015* opening event, noting that they particularly enjoyed the interview that Director Muddiman undertook with the winner, artist Nigel Milsom.

The Gallery's new acquisitions were presented to the meeting.

Moved: Robert Dagworthy AM

Seconded: Clr. Phil Youngblutt

RESOLVED that the new acquisitions are adopted.

GENERAL BUSINESS

3 Upcoming events

The dates of upcoming events were presented to the Committee.

The new acquisition of the Olley painting, *Pineapple Flowers and Pears 2001*, will be a joint purchase between the Tweed Regional Gallery Foundation Ltd for \$30,000, The Friends of the Tweed Regional Gallery for \$30,000 with a contribution from the Tweed Regional Gallery Donation Fund of \$10,000.

A British Council travelling exhibition by artist David Hockney will be touring to TRGMOAC in 2017. The cost is to be underwritten by the Tweed Regional Gallery Foundation Ltd. The freight cost of this exhibition could be shared with the Blue Mountains Regional Gallery who may also exhibit this exhibition.

Next Meeting:

The next meeting of the Tweed Regional Art Gallery Advisory Committee will be held on Wednesday 11 May 2016 at 5.00pm.

The meeting closed at 5.55pm.

EXECUTIVE MANAGEMENT TEAM'S COMMENTS:

Nil.

EXECUTIVE MANAGEMENT TEAM'S RECOMMENDATIONS:

Nil.

COUNCIL IMPLICATIONS:

a. Policy:

Code of Meeting Practice.

Terms of Reference - Reviewed 21 August 2012.

b. Budget/Long Term Financial Plan:

Not applicable.

c. Legal:

Not Applicable.

d. Communication/Engagement:

Inform - We will keep you informed.

UNDER SEPARATE COVER/FURTHER INFORMATION:

Nil.

15 [SUB-TRAG] Minutes of the Tweed Regional Gallery Advisory Committee Meeting held Wednesday 11 May 2016

SUBMITTED BY: Community and Cultural Services

Valid



Supporting Community Life

LINKAGE TO INTEGRATED PLANNING AND REPORTING FRAMEWORK:

2	Supporting Community Life
2.1	Foster strong, cohesive, cooperative, healthy and safe communities
2.1.3	Provide opportunities for residents to enjoy access to the arts, festivals, sporting activities, recreation, community and cultural facilities

SUMMARY OF REPORT:

The Minutes of the Tweed Regional Gallery Advisory Committee Meeting held Wednesday 11 May 2016 are reproduced in the body of this report for the information of Councillors.

RECOMMENDATION:

That:

- 1. The Minutes of the Tweed Regional Gallery Advisory Committee Meeting held Wednesday 11 May 2016 be received and noted; and**
- 2. The Executive Management Team's recommendations be adopted as follows:**

Resignation of Robert Appo from the Committee

"That Mr Mark Cora, Indigenous Officer Arts Northern Rivers, is the recommended replacement for Robert Appo and that Mr Cora's nomination be put forward for inclusion on the committee in September when the Council committees are decided."

REPORT:

The Minutes of the Tweed Regional Gallery Advisory Committee Meeting held Wednesday 11 May 2016 are reproduced as follows for the information of Councillors.

Venue:

Tweed Regional Gallery - Friends Meeting Room

Time:

5.00pm

Present:

Robert Dagworthy AM, Hobie Porter, Cr Warren Polglase, Shirley Kennedy, Jo Nimmo, Lyn Stewart, Tracey Stinson, Robyn Grigg, Katerina Primikiri-Mackney. In attendance: Susi Muddiman Gallery Director, Gregory Puch Minute Taker.

Apologies:

Judith Sutton, Louise Devine, Cr Phil Youngblutt, Stephen Senise.

Minutes of Previous Meeting:

Moved: Lyn Stewart

Seconded: Cr Warren Polglase

RESOLVED that the Minutes of the Tweed Regional Gallery Advisory Committee meeting held Wednesday 10 February 2016 be accepted as a true and accurate record of the proceedings of that meeting.

Business Arising: No business arising

Agenda Items:

Gallery Director's Report

Report of the Art Gallery Director submitted to the Art Gallery Advisory Committee
Wednesday 11 May 2016

Subject: Officer's Report

Author: Susi Muddiman

Manager: Robyn Grigg, Manager Community and Cultural Services

RESOLVED:

That the report by the Art Gallery Director be received for information.

VISITORS TO THE GALLERY:

For the period since the previous meeting of the AGAC on 10 February 2016, the Gallery welcomed 36,708 visitors (at 01/05/16).

The following information covers the period of Friday 15 January – Sunday 29 February 2016.

This exhibition period showcased:

THE TEMPORARY EXHIBITIONS GALLERY AND BOYD GALLERY

Archibald Prize 2015: NSW Regional Tour

An Art Gallery of New South Wales touring exhibition

Showcasing the 47 finalists from this highly-anticipated and much-loved major prize for portraiture, held annually by the Art Gallery of NSW. The Archibald Prize awards \$100,000 to the winning artist, and entries must be painted in the past year, from at least one live sitting with the artist. The regional tour provides audiences the opportunity to experience and enjoy the Archibald Prize in their local community. Gallery visitors enjoyed a range of programs associated with the Archibald Prize including; voting for their People's Choice, viewing the Young Archies exhibition, and participating in the Children's Trail activity.

For the first time in the history, the Tweed Regional Gallery charged an entry fee to view an exhibition. The Gallery made every effort to keep ticket prices affordable for all community members, with specific prices for individual, family and group tickets as following: \$10 – adult, \$7 - Gallery Friend or Foundation member, \$26 - family (2 adults + up to 3 children), \$8 - concession or child aged 5-17 years, free entry - children under 5 yrs), \$8 per person – bus group booking, \$6 per person - school/education group booking.

THE MARGARET OLLEY ART CENTRE (MOAC)

The MOAC combines exhibitions of paintings and objects, an interactive multi-media drawing activity, research library and education workshop, and is complemented by the Nancy Fairfax Artist in Residence Studio. Central to the MOAC is the recreation of areas of Olley's famous home studio, principally the Hat Factory and the Yellow Room.

Until 7 February - *48 Duxford Street: re-creating Margaret Olley's home studio*, an exhibition of paintings, photographs and architectural plans that explores the story of the re-creation of Olley's home studio at Tweed Regional Gallery.

From 13 February – *The Mystery of Things: Margaret Olley & David Strachan* explores the connection in art and life between two Australian painters, Margaret Olley and David Strachan, via their shared dedication to the genre of still life painting.

THE WITHEY FAMILY GALLERY

Director's Choice: works from the collection: a selection that includes Australian portraiture, artists' prints, and works inspired by the Tweed region, by artists of the region, and by Margaret Olley and her contemporaries.

THE ANTHONY GALLERY

Mark Tedeschi: shooting around corners showcases selected works by Mark Tedeschi AM QC representing his prolific, award winning photographic practice over the past 25 years. A Maitland Regional Art Gallery touring exhibition

THE FRIENDS GALLERY

Animal Self: Joanna Braithwaite's *Chook, Chook, Chook (Self Portrait)*, a work from the Gallery's collection, is the visual and conceptual focus of this activity space for children. Visitors have the opportunity to interact with a number of Braithwaite's playful artworks, creating their own pieces to leave in the display or take home.

THE MACNAUGHTON FOCUS GALLERY

Luscious: A series of dramatic chiaroscuro still life paintings by Gatyia Kelly that explore our sensual responses to visual imagery. Through a distillation of strong light and contained composition, Kelly's paintings illuminate the delicate and sometimes erotic nature of the ordinary to create their own calm, mysterious narrative. Exotic fruit and flowers such as pomegranates, figs, cherries, gardenias and magnolias are married with dry native foliage and decorative vessels. An outcome of the Community Access Exhibitions Program.

Exhibition period open to the public for 33 days

Kelly 35 days

Opening Function *Gala Ticketed Event: 112*

Community Groups 731 – Woolard Art Class (21), Cross Country Tours (14), Cross Country Tours (35 + 24 + 20 + 16), Riverbend Village Ballina (12), Golden Christ (22), QAGOMA Gallery Guides (34), Big W Big Heart (51), Friends of Townsville Gallery (19), Sunstate Coach Tour (57), Brisbane Forum (18), Feros Care (31), Pony Car Club (30), Renaissance Group (30), Rotary Club – Surfers Paradise (45), The Altos (8), Arts Connect IPS (35), Feros Care (12), Corrigan Group (50), Probus Club – Poiniana (37), Crowley Care Centre (12), Tamborine Garden (27), Russell Island Art Group (17), Beaudesert Seniors (28), Half Dozen Group (26).

Education Groups 1,145 Primary = 8 (430) Secondary = 19 (690) Tertiary = 2 (25)
St Andrews Lutheran College (30 + 19), Mullumbimby Steiner School (34 + 25 + 14), St Mary's Catholic College (70), Cape Byron Steiner School (18), Helensvale HS (22), Emmanuel College (22), Southport Secondary School (20), Hillcrest Christian School (42), Wilsons Creek PS (44), Lindisfarne Anglican College (47), Japanese Student University (23), Centaur PS (26), St Joseph's PS (55), UCSC (66), Assisi College (30), AB Paterson College (68), Marymount HS (42), Casino HS (25), Mullumbimby PS (214), Summerland Christian School (31), Trinity Lutheran College (16), Lismore HS (43), Southern Cross Distance Education (2), Varsity College (26), Kingscliff HS (50), Holland Park HS (21).

These are remarkable figures given the Term 1 for schools did not begin until 28 January in NSW and 25 January in QLD.

January 8,716
February 16,750
Total Attendances: 25,466

1. PUBLIC PROGRAMS

The Archibald Prize 2015: Regional Tour was officially opened at a ticketed Gala Event from 7.00-9.00pm on Friday 15 January. Ticket prices were \$75 (\$65 for Friends of the Gallery/Foundation members), and the event was catered by the Gallery Café. The event was well attended by 99 paying guests along with 13 complimentary entries including guest speakers, sponsors and exhibitor Gatya Kelly and her guests. Susi Muddiman OAM, Director, Tweed Regional Gallery, welcomed guests and officially opened Luscious by Gatya Kelly and then introduced Virginia Goss, Branch Manager, ANZ, Mullumbimby to speak on behalf of sponsor ANZ. This was followed by Dr Michael Brand, Director, Art Gallery of New South Wales, who officially opened the Archibald Prize 2015: Regional Tour, and special guest Nigel Milsom, Winner, Archibald Prize 2015, who spoke in a short question and answer format with Susi Muddiman.

On Tuesday 2 February the Gallery hosted an after school function, from 3.30-5.00pm, to celebrate the exhibition outcome from the Young Archie competition and award prizes to the finalists and the winner in each category. At Tweed Regional Gallery, the competition was open to young artists in two categories only: 13-15 years and 16-18 years. The competition attracted 38 entries of which 10 were displayed – five in each age group. Approximately 70 people including all finalists, their friends and relatives, and senior staff from Tweed Shire Council, including General Manager, Troy Green, attended the event, which was generously catered by the Friends of the Gallery. (Note that the competition is usually open also to two categories of younger artists but these entrants were not sought here as the age groups were represented only months prior in the Gallery's annual exhibition of the Les Peterkin Portrait Prize for Children.)

The Friends of the Tweed Regional Gallery & Margaret Olley Art Centre Inc. organised Tea with Susi, an event in the Gallery Café on Wednesday 17 February at 10.30am, ticketed at \$25.00pp. The 42 ticket holders were invited to enjoy morning tea as the Gallery Director explored the question, Why is the Archibald Prize so popular?

Artist Gatya Kelly presented an Artist at Work demonstration on Sunday 21 February from 10.00am to 12.00noon. This was a very popular presentation with patrons queued at the Gallery doors awaiting opening hours. Gatya was surrounded by onlookers for the entire time and engaged with approximately 120 people during the two hour period. The Gallery engaged musicians Marcuss Nassner and Rudi Gerhardt to perform incidental music.

The final program in association with the Archibald Prize was Art Up Late 'til 8 on Friday 26 February. This was the first time the Gallery had opened for viewing after hours, not in association with a public program or other special event. Approximately 200 people attended during the period 5.00-8.00pm. At 6.30pm the Gallery's MOAC Curator Ingrid Hedgcock announced the winner of the Archibald Prize 2015 People's Choice Award – Bruno Jean Grasswill's portrait of Michael Caton, as voted by Tweed Regional Gallery visitors, along with the name of the person from the voting public who won the \$500 prize from ANZ Bank.

2. EDUCATION

Art After School

The Art After School program on Thursday 28 January was attended by 32 people (teachers and Gallery Guides). The external facilitators, artists Mitch Cairns and his subject Peter

Powditch, participated in a conversation with Gallery Director, Susi Muddiman. EADO, Jodi Ferrari shared Archibald Prize 2015 Education Resources at this event and directed teachers to utilise AGNSW Art Sets online.

Education Resources

The Gallery's Education and Audience Development Officer (EADO) contacted any schools and community groups that made bookings prior to their visit to discuss their needs and requirements, and available educational resources. Education resources were distributed and discussed during Volunteer Guide Training sessions.

Archibald Prize 2015: Regional Tour - Education Resources were made available through the Gallery's website. However, it is unfortunate that specific details on the number of downloads (or click-throughs in this case) cannot be tracked at this stage. The Mobile Guide was widely promoted to schools and all booked community groups, however the Gallery does not have free Wi-Fi in the galleries which may have prohibited access. The Children's Trail brochure was offered to all young visitors and school groups visiting the exhibition. Many schools utilised this resource in advance to plan their visit and develop their own worksheets.

Gatya Kelly: Luscious - An 'ABOUT sheet' which included a brief overview of the content of the exhibition and information about the artist, was created and distributed to Gallery Guides to assist with their preparation for guiding groups during the exhibition period.

Volunteer Guides & Guided Tours:

One or two free guided tours were presented daily (Wednesday – Sunday) from 11.30am to the general public. Community groups who book their visit can request a special tour hosted by Volunteer Gallery Guides. The Gallery now charges \$2.00 pp for these tours with the proceeds supporting Education Programs. The group tours include the history of the Gallery and exhibitions on display, including MOAC. These have been incredibly popular with groups and we are taking bookings many months in advance.

Volunteer Guide Training and Changeover Meetings with EADO:

A training session for Gallery Guides, conducted by the Gallery's Education and Audience Development Officer (EADO), was attended by 17 guides. During this session Education Resources for new exhibitions were distributed and discussed.

Archibald Prize 2015: Regional Tour - Formal guided tours of the *Archibald Prize 2015* exhibition were not offered to the public however the general guided tours of the Gallery included an introduction to the exhibition, to increase visitor awareness and promote ticket sales. Guides were also available in the *Archibald Prize 2015* exhibition space to answer questions. The Guides wore badges inviting the public to 'Please ask me'.

To accommodate the large number of school groups visiting the exhibition during such a short period (the exhibition was only open for the first 4 weeks of new school term in 2016), Gallery staff opened the venue early on 3 occasions. The EADO delivered 10 minute introductions to the exhibition to booked school groups.

Guided Tours	Number of tours	Attendance numbers
Daily tours for general public Depending on visitor numbers, either one or two guided tours were conducted by Volunteer Gallery Guides at 11.30am each day	47	334
Tours/introductions for Group bookings Guided tours for community/school groups, conducted by Volunteer Gallery Guides	13	378
Introductory talks, conducted by Gallery staff or Volunteer Guides	10	137
	70	849

3. CATALOGUES AND MERCHANDISE\

Archibald Prize 2015: NSW Regional Tour

During the exhibition period, visitors purchased the following merchandise, sourced from the AGNSW. 524 x *Archibald Prize 2015* catalogues at the rrp. \$16.00 (w'sale \$9.60) leading to a Gallery profit \$3,353.60. 46 x *Let's Face It* books at the rrp. \$50.00 (w'sale \$30.00) leading to a Gallery profit \$920.

Art Sales: Gatya Kelly

This exhibition, the first solo show of work by Gatya Kelly, proved to be incredibly popular with the public and achieved record breaking art sales. From the 11 works available for purchase, 10 sold to Gallery visitors for prices ranging from \$1,200 to \$7,500. This resulted in total retail sales of: \$44,300, consisting of \$32,339 artist payment and \$11,961 Gallery commission.

Promotion

Website – <http://www.tweed.nsw.gov.au/artgallery> - includes general information on the Gallery's exhibition schedule and other specific exhibition related material eg: education resources and links to touring agencies websites.

During this exhibition period the Gallery's "Current Exhibitions" webpage attracted page views = 5,392

Other online listings include:

Museums & Galleries NSW	www.mgnsw.org.au
Arts Northern Rivers	www.artsnorthernrivers.com.au
Echonet daily (online)	www.echonetdaily.net.au
Destination Tweed	www.destinationtweed.com.au
Live Guide	www.liveguide.com.au
Big Volcano Tourism	www.bigvolcanotourism.wordpress.com

Media Releases – distributed widely through the Tweed Shire Council's Customer and Communication Services Unit.

Invitations – 2,500 copies distributed. 1,500 to the Friends of the Gallery mail list, with additional copies distributed to mail lists of relevant agencies, touring bodies, exhibiting artists, local media, education and tourism facilities and Gallery visitors.

Gallery Exhibition Program – 5,000 distributed to Friends of the Gallery mail list, arts and media organisations, schools, tourism operators and Gallery visitors.

.Advertisements – advertising schedule may include national periodicals (eg: Imprint, Art Monthly), local newspapers (eg: Daily News online), free publications (eg: Tweed Valley Weekly, Byron Echo,) and the Tweed Shire Council newsletter (Tweed Link) distributed to all shire households.

Radio Interviews

Interview	Media	Date
Jo Shoebridge with Gallery Director re: Young Archies and preliminary promotion	ABC North Coast	05/11/15
Ann-Marie von Douglas with Gallery Director re: <i>Archibald Prize 2015: Regional Tour</i>	Gold Coast FM	05/01/16
Jo Shoebridge with Gallery Director re: <i>Archibald Prize 2015: Regional Tour</i>	ABC North Coast	08/01/16
Charmaine Kane with Gallery Director re: <i>Archibald Prize 2015: Regional Tour</i>	ABC Gold Coast	11/01/16
Amy in Drive Time, with Gallery Director re: <i>Archibald Prize 2015: Regional Tour</i>	ABC Gold Coast	13/01/16
Sam Turnbull with Gallery Director, Georgia Connolly and local business owners	ABC North Coast	15/01/16
re: cultural tourism and the impact of the Archibald Prize 2015: Regional Tour Justine Frazer with Gallery Director re: attendance numbers	ABC North Coast	22/02/16

Television

The Gallery worked with NBN Ltd to produce a 30 second commercial specifically for the *Archibald Prize 2016: NSW Regional Tour*. The commercial featured a selection of Prize entries, including the winning work. The commercial screened from Sunday 10 January - Sunday 21 February and utilised an extensive schedule to cover television viewing patterns for the morning, afternoon and evening. In total the commercial was screened 128 times, 80 times on the NBN Lismore Network which covers the mid north coast up to an including parts of south east Queensland, and 48 times on NBN Gold Coast which covers south east Queensland up to Brisbane. The Friends of the Gallery made a financial contribution towards the cost of this advertisement. Total costs (production cost = \$935) was \$4,631.

Print Media

Art Almanac

February 2016

Tweed Valley Weekly

January 2016, February 2016

Byron Shire Echo

November 2011, February 2016

MEDIA COVERAGE

The cessation of a number of regional print publications, including the weekly *Tweed Shire Echo* and daily *Tweed Daily News*, has had a significant impact on the coverage and reporting of Gallery exhibitions and events. These publications are now published online only. It is unfortunate and frustrating, that despite the Gallery's inclusion of appropriate image credits, and relevant taglines and logos on all media releases and promotional documents, media agencies regularly fail to include the information in published articles.

Archibald Prize 2015: Regional Tour

Article	Media	Date
"The Archibald Prize 2015 will be coming to Tweed"	Tweed Daily News	01/01/16
"Archibald Prize exhibition opens in Tweed"	www.echo.net.au	07/01/16
"Prestigious Archibald exhibition returning to Tweed Regional Gallery"	Tweed Link	12/01/16
"M'bah set for Archie's influx"	Tweed Daily News	13/01/16
"Archibald Prize moves into Tweed Regional Gallery"	www.tweeddailynews.com.au	14/01/16
"Appreciate fine art at the Archibald Prize gala opening"	www.theweekendedition.com.au	14/01/16
"Archibald exhibition set to open in Tweed"	www.echo.net.au	15/01/16
"Portrait prestige on show"	Tweed Daily News	16/01/16
"Gallery packed for Archibald"	Tweed Daily News	16/01/16
"Hang out with the rich and famous"	Tweed Link	19/01/16
"Out and About" images from Gala Opening	Tweed Daily News	20/01/16
"Archibald visitor numbers could be a record breaker"	Tweed Valley Weekly	21/01/16
"Holiday crowds make the most of Archibald Prize"	www.tweeddailynews.com.au	28/01/16
"Art News – 2015 Archibald Prize"	Mt St Patrick College	04/02/16
"Young Archie draws fresh talent"	Tweed Link	09/02/16
"Ella wins Young Archie prize"	Tweed Valley Weekly	04/02/16
"Last chance – art and music"	Tweed Link	23/02/16
"Tweed Regional Gallery Director, Susi Muddiman is welcoming the Archibald Prize to the region"	abc.net.au	15/01/16
http://www.nbnnews.com.au/2016/01/14/archibald-prize-finalists-come-to-margaret-olley-gallery/		14/01/16

Gatya Kelly - Luscious

Article	Media	Date
"An exhibition by Mullumbimby artist Gatya Kelly that explores life"	Tweed Valley Weekly	14/01/16
"Luscious paintings on display at Tweed Gallery"	www.echo.net.au	11/01/16

5. COMMENTS - Excerpts from the Visitor Comment Book

General

- Wonderful – such a great place to visit with kids. (Thornleigh)
- Great interactive stuff for kids!
- Great for children of the area. (Tweed Heads)
- Well done. A gallery to be thoroughly enjoyed.
- Awesome, inspiring, wonderful – thank you. (Barkers Vale)
- An oasis! Very well presented. (UK)
- As a constant visitor – I must say that this is the best overall display yet! (Kingscliff)
- I always enjoy visiting the Gallery. The current exhibitions are stimulating and enticing. (Allora)
- Wonderful – a real treat. (UK)
- Well done – always a pleasure to visit. (Toowong)
- I come every time I am over in NSW. Pleasantly surprised every time – great exhibitions! (WA)
- Sensational - don't want to leave, I am inspired and lost for words.
- We are so blessed to have this in Murwillumbah – big thanks.
- Thank you for the privilege of seeing so much wonderful art.
- I feel very happy that this gallery is accessible to me (student). Thank you for being so welcoming. (Goodna)
- World class gallery!! (Brisbane)
- Love your exhibitions and the gallery – it's a nice size and has lots to see.
- WOW, WOW , WOW!! How lucky we are to have this wonderful “art” culture. (Nunderi)
- Aren't we lucky having such a world class gallery in our locality. Keep up the great work staff and TSC. (Fingal Head)
- Wonderful presentation of works. Excellent facilities and location. (Gwandalan)

Gatya Kelly – Luscious

- This gallery never disappoints – but the Luscious exhibition is my all-time favourite. (Melbourne)
- Fabulous – all the exhibitions were wonderful – but especially Gatya!
- Gatya Kelly – totally awesome, worth the drive. (Brisbane)

Archibald Prize 2015: NSW Regional Tour

- Love the Archibald. I travelled to Sydney to see it last July. Everyone was taking photos at the AGNSW - posting on social media and sharing the excitement. The TRG sadly won't allow photos of the Archibald exhibition – you're missing out on free marketing. Regardless, I love TRG.
- Corey Bernardi – TSK TSK. (Queensland)
- Thank you for bringing the Archies here – a wonderful display.
- I wanted to vote, but too much information required. Wonderful exhibitions!! Particularly Tedeschi and Archibald.
- A very pleasing Archibald. (Terranora)
- Art should be free to see!
- Archibald, predictably divisive – most works are WOW – some WHY – one ??!**#% (Banora Point)
- Archibald – great to have it in a regional gallery.
- Wonderful – but surprised that we were charged to view. (Bombora)

- Well done, thoroughly enjoyed the Archibald. (Gwandalan)
- How lucky we are to enjoy this exhibition. Thanks. (Tweed Heads)
- Fabulous – love this gallery – perfect size. Archibald superb! So lucky to see it. (Brisbane)
- It was amazing to find the Archibald on display here as well.
- Visited for the evening session – how special. The staff, the music, the atmosphere and of course the art. Thank you. (Brisbane)
- Love the Art-up-Late. Hope you repeat it. (Byron Bay)
- Art-up-Late – great idea. (Sth Golden Beach)
- Loved the music and art – more please!! (Stokers Siding)
- Wonderful idea, evening so special and music great – definitely more! (Nth Tumbulgum)

Mark Tedeschi

- Fascinating exhibitions – but loved Tedeschi's work.
- Wonderful exhibitions!! Particularly Tedeschi and Archibald.
- Mark Tedeschi, what a talent. (Pumpenbil)
- Tedeschi's work is absolutely captivating! (Ohio, USA)

6. GENERAL GALLERY BUSINESS

The Border Art Prize 2016

Those of you who were able to attend would have witnessed a huge event on Friday evening (6 May 2016) to mark the opening of the *Border Art Prize* and Oksana Waterfall's exhibition *Object of Affection*. Always a crowd-pleaser, the 2016 Prize attracted a record number of guests, with 462 visitors welcomed to the Gallery to view the exhibition and hear judge Euan Macleod (artist) deliver his decisions and comments on the Prize. Councillor Warren Polglase officially opened the Prize, informing those present of the number of entries, and number of artworks selected for exhibition.

This year we have displayed 279 artworks out of a total of 370 entries received at the Gallery. This is similar to 2014 when 275 works were shown.

NB: 16 artworks were not delivered due to calamity, forgetfulness or other

Unsurprisingly, the highest entries numbers are from Tweed Shire and Gold Coast City. Tweed Shire comes out just ahead of Gold Coast City on exhibition numbers, with 90 exhibitors to Gold Coast's 83. This is consistent with the slightly higher entry numbers from Tweed Shire residents.





Acquisitions to the Collection

The Committee is asked to ratify the acquisition of 16 artworks to the collection. An acquisitions document generated from the Collection Management System, Vernon, is attached to this report. Four of these works are gifts through the Commonwealth Government's Cultural Gifts Program by artist Caroline Barker, the artist who taught Margaret Olley as a young school girl in Brisbane. It is significant to have these works come into the collection, as they clearly indicate the influence Ms Barker's work and teaching had on the young Olley.

The report also includes the acquisition of Olley's *Blue Kitchen*, painted in 1993 and purchased by the Friends of Tweed Regional Gallery & Margaret Olley Art Centre Inc. with

the assistance of a public appeal for funds. This is a significant work, and a rare painting of the Blue Kitchen.

Susi Muddiman OAM, Gallery Director
9 May 2016

Moved: Hobie Porter

Seconded: Robert Dagworthy AM

RESOLVED that the Committee ratify the new Gallery acquisitions.

Resignation of Robert Appo from the Committee

Robert Appo's letter of resignation was presented to the Chairperson and Director Muddiman read the letter to the committee.

Moved: Shirley Kennedy

Seconded: Katerina Priemikiri-Mackney

RESOLVED that the letter of resignation from Mr Appo be accepted by the Committee.

Director Muddiman read from Mr Cora's C.V informing the committee of Mr Cora's relevant experience for the role.

Moved: Hobie Porter

Seconded: Katerina Priemikiri-Mackney

RECOMMENDATION:

That Mr Mark Cora, Indigenous Officer Arts Northern Rivers, is the recommended replacement for Robert Appo and that Mr Cora's nomination be put forward for inclusion on the committee in September when the Council committees are decided.

General Business:

- In response to a query raised during a Guided tour by a member of the public, Lyn Stewart asked Director Muddiman why professional artists who are commercially represented are selected to exhibit in the Border Art Prize. Director Muddiman responded that the prize is open to all artists who are residents of the regions covered by the prize and it would be discriminatory for the Gallery to disqualify artists based on their professional or amateur status.
- Shirley Kennedy enquired about the entry submitted by an eight year old, questioning the age requirement of the Border Art Prize; Director Muddiman responded that the Gallery was not aware of the age of entrants as it is not a question asked on the entry form and that it would be discriminatory for the Gallery to request the age of artists who entered the Prize.
- Jo Nimmo addressed the need for the Gallery to rethink the number and variety of laminated signs that are on display in the public areas of the Gallery. An inventory of the laminated signs exhibited throughout the Gallery will take place. The laminated information in the Gallery and the lift needs to be placed into frames similar to the Flush Media frames used within the Gallery's public amenities.

Next Meeting:

The next meeting of the Tweed Regional Gallery Advisory Committee will be held at 5.00pm on Wednesday 3 August 2016.

Apologies: Hobie Porter,
Robert Dagworthy AM,
Katerina Primikiri-Mackney

are apologies for 3 August 2016.

The meeting closed at 5:30 pm

EXECUTIVE MANAGEMENT TEAM COMMENTS:

Resignation of Robert Appo from the Committee

Nil.

EXECUTIVE MANAGEMENT TEAM'S RECOMMENDATIONS:

Resignation of Robert Appo from the Committee

"That Mr Mark Cora, Indigenous Officer Arts Northern Rivers, is the recommended replacement for Robert Appo and that Mr Cora's nomination be put forward for inclusion on the committee in September when the Council committees are decided."

COUNCIL IMPLICATIONS:

a. Policy:

Code of Meeting Practice.

Terms of Reference - Reviewed 21 August 2012.

b. Budget/Long Term Financial Plan:

Not applicable.

c. Legal:

Not Applicable.

d. Communication/Engagement:

Inform - We will keep you informed.

UNDER SEPARATE COVER/FURTHER INFORMATION:

Nil.

16 [SUB-TRAG] Minutes of the Tweed Regional Gallery Advisory Committee Meeting held Wednesday 3 August 2016

SUBMITTED BY: Community and Cultural Services

Valid



Supporting Community Life

LINKAGE TO INTEGRATED PLANNING AND REPORTING FRAMEWORK:

- 2 Supporting Community Life
 - 2.1 Foster strong, cohesive, cooperative, healthy and safe communities
 - 2.1.3 Provide opportunities for residents to enjoy access to the arts, festivals, sporting activities, recreation, community and cultural facilities
-

SUMMARY OF REPORT:

The Minutes of the Tweed Regional Gallery Advisory Committee Meeting held Wednesday 3 August 2016 are reproduced in the body of this report for the information of Councillors.

RECOMMENDATION:

That the Minutes of the Tweed Regional Gallery Advisory Committee Meeting held Wednesday 3 August 2016 be received and noted.

REPORT:

The Minutes of the Tweed Regional Gallery Advisory Committee Meeting held Wednesday 3 August 2016 are reproduced as follows for the information of Councillors.

Venue:

Friends' Meeting Room

Time:

5.00pm

Present:

Clr Warren Polglase, Hobie Porter, Shirley Kennedy, Jo Nimmo, Clr Phil Youngblutt, Louise Devine.

In attendance: Susi Muddiman OAM, Gallery Director, Gregory Puch Minute Taker.

Apologies:

Robert Dagworthy AM, Katerina Primikiri-Mackney, Robyn Grigg Manager Community and Cultural Services, Stephen Senise, Tracey Stinson Director Community and Cultural Services, Lyn Stewart, Judith Sutton.

Minutes of Previous Meeting:

Moved: Clr Warren Polglase

Seconded: Shirley Kennedy

RESOLVED that the Minutes of the Art Gallery Advisory Committee meeting held on Wednesday 11 May be accepted as a true and accurate record of the proceedings of that meeting.

Business Arising: General Business: the laminated signs are being replaced with metal branded signage.

Agenda Items:

Gallery Director's Report.

Report of the Art Gallery Director submitted to the Art Gallery Advisory Committee
Wednesday 3 August 2016

Subject: Officer's Report

Author: Susi Muddiman

Manager: Robyn Grigg, Manager Community and Cultural Services

Resolved:

That the report by the Art Gallery Director be received for information.

VISITORS TO THE GALLERY:

The Gallery welcomed 18,597 visitors during the period 8 May – 10 July 2016.

The following information covers the period of Friday 4 March – Sunday 1 May 2016.

This exhibition period showcased:

Uncommon Australians: The vision of Gordon and Marilyn Darling
A National Portrait Gallery exhibition

In the late 1980s, Gordon and Marilyn Darling agreed to pursue the creation of a place that would testify, through portraits, to the ingenuity, intelligence, inquisitiveness and perseverance of individuals who had made a lasting difference to Australia. Over years, their persuasive lobbying for an Australian National Portrait Gallery played a crucial part in bringing the institution into being. *Uncommon Australians* pays tribute to the vision of the late Gordon Darling AC CMG and Marilyn Darling AC for a national portrait gallery dedicated to the men and women who have shaped Australia.

1. ALSO ON EXHIBITION

THE MARGARET OLLEY ART CENTRE (MOAC)

The MOAC combines exhibitions of paintings and objects, an interactive multi-media drawing activity, research library and education workshop, and is complemented by the Nancy Fairfax Artist in Residence Studio. Central to the MOAC is the recreation of areas of Olley's famous home studio, principally the Hat Factory and the Yellow Room.

The Mystery of Things: Margaret Olley & David Strachan explores the connection in art and life between two Australian painters, Margaret Olley and David Strachan, via their shared dedication to the genre of still life painting.

THE WITHEY FAMILY GALLERY

Director's Choice: works from the collection: a selection that includes Australian portraiture, artists' prints, and works inspired by the Tweed region, by artists of the region, and by Margaret Olley and her contemporaries.

THE ANTHONY GALLERY

Until 17 April - *Mark Tedeschi: shooting around corners* showcases selected works by Mark Tedeschi AM QC representing his prolific, award winning photographic practice over the past 25 years. A Maitland Regional Art Gallery touring exhibition.

From 20 April – *Wanderlust: work from recent travels by Wendy Sharpe* showcases 55 works on paper created during Sharpe's travels and residencies over the last 10 years in Paris, Italy, France, Egypt, India, the Middle East, Morocco, Antarctica, Mexico and Spain.

THE FRIENDS GALLERY

Until 3 April - *Animal Self* Joanna Braithwaite's *Chook, Chook, Chook (Self Portrait)*, a work from the Gallery's collection, is the visual and conceptual focus of this activity space for children. Visitors have the opportunity to interact with a number of Braithwaite's playful artworks, creating their own pieces to leave in the display or take home.

From 8 April – *Portrait* Kirsten Coelho an elegant display of new ceramic work inspired by Coelho's residency in the Nancy Fairfax Artist in Residence Studio in September 2015. Coelho's work draws partly on the reinterpretation of 19th and early 20th century utilitarian wares produced for a domestic market in Australia. Alongside this she explores an ongoing fascination with the nature of objects portrayed in paintings and the narratives they create.

THE BOYD GALLERY

white noise Angus McDonald is one of the most accomplished artists living in the Northern Rivers region. This diverse selection of extraordinary works provides visitors with just a glimpse of McDonald's extraordinary skill and experience. An outcome of the Community Access Exhibitions Program.

THE MACNAUGHTON FOCUS GALLERY

Peregrination Rick Shearman has spent much of the last 20 years travelling and working around the world. Living in Denmark, Germany, Italy, Austria and Costa Rica, he spent time observing, assimilating and absorbing the surrounding cultures - all the while recording 'en plein air' the visual stimuli he encountered. *Peregrination* includes a selection from Shearman's amassed collection of visual journals exhibited alongside a series of larger drawings and prints.

An outcome of the Community Access Exhibitions Program.

2. ATTENDANCES

Exhibition period open to the public for 42 days

McDonald, Shearman 44 days

Opening Function 239

Community Groups 547 – Feros Care (12), It's easy tours (9), Arts Connect IPS (35), The Altos (8), Cross Country Tours (46), Sinclair Tour + Travel (25), Oxley Senior Citizens (40), Feros Care (12), Meals on Wheels (35), Moreton Shores Retirement Village (49), Probus Club – Robina (20), Brian's Bus & Charter (18), Taxi Club Assn. (16), Alstonville Inner Wheel Club (22), Over 50 Adventures (12), Encore Southport (30), Probus Club – Nth Brisbane (44), Brisbane Forum (10), Maltese Association (33), Grafton Senior Citizens (31), Probus Club – Lismore Heights (40).

Education Groups 158 - Woodleigh School (21), The Channon PS (30), Sathya Sai HS (11), Stokers Siding PS (20), Nimbin CS (43), Carool PS (13), All Saints Anglican School – Merrimac (20).

Total Attendances: 16,715

3. PUBLIC PROGRAMS

A combined exhibition opening on Friday 4 March, was preceded at 5.15pm by an exhibition preview talk on *Uncommon Australians: the vision of Gordon and Marilyn Darling* by the Exhibition Curator, Dr Sarah Engledow, Historian, National Portrait Gallery. An audience of 35 enjoyed Dr Engledow's lively insights into the provenance and stories behind each portrait.

The Gallery was thrilled that Angus Trumble, Director, National Portrait Gallery was able to attend the opening as a Special Guest.

Official opening speeches took place at 6.30pm before an audience of 239 people. Harley Graham, architect, opened Rick Shearman's exhibition *Peregrination* and Susi Muddiman, Gallery Director, officially opened Angus McDonald's *white noise*. Marilyn Darling AC, Chair of the Gordon Darling Foundation then spoke about *Uncommon Australians* and remembered her late husband, Gordon, on the anniversary of his birth – a fitting date to open the exhibition.

On Sunday 6 March, at 11.00am Mark Tedeschi, photographer, true crime author and Crown Prosecutor spoke about his photographic career, his two books on infamous Australian criminals and his intermingling of photography with his career as a Crown Prosecutor. An audience of 46, including keen Gallery Guides, gathered to hear this lively conversation between Tedeschi, a consummate speaker, and the Gallery Director, Susi Muddiman OAM.

From 1.00-3.00pm on Sunday 20 March artist Rick Shearman presented an Artist at Work program in the Gallery Foyer, speaking to the public and creating small collages. Approximately 30 people engaged with Rick during the event.

To celebrate Senior's Week 2016, on Sunday 3 April artist Marianne Galluzzo facilitated a free creative workshop for seniors, held in the Frances Mills Education Centre. Under Marianne's guidance 12 participants modelled a bust using air drying paper clay.

Inspired by *Peregrination*, on Thursday 14 April, from 10.00am-2.00pm, Carleen Joy held a collage book workshop *Journey of a Lifetime* during the school holiday period. This class cost \$50 and was attended by 4 children, aged 8-14 years. Marianne Galluzzo ran a second school holidays workshop, *Making Animal Heads*, on Tuesday 19 April. This three hour class cost \$40 and 10 children attended.

During the school holidays, in conjunction with *Uncommon Australians: the vision of Gordon and Marilyn Darling*, artist Marianne Galluzzo facilitated an all ages public program on Sunday 17 April from 12noon-2.00pm in the Gallery Foyer. Visitors were invited to create simple *Portraits in Print* using household materials such as cardboard, handtowel, tissue paper and brown paper bags. Approximately 32 people including children, families and individuals participated in the program using mono-printing techniques.

4. EDUCATION

Education Resources

The Gallery's Education and Audience Development Officer (EADO) contacted any schools and community groups that made bookings prior to their visit to discuss their needs and requirements, and available educational resources. Education resources were distributed and discussed during Volunteer Guide Training sessions.

Uncommon Australians: The vision of Gordon and Marilyn Darling The online resource for *Uncommon Australians* was made available through the Gallery's website, but unfortunately downloads cannot be tracked at this stage. All school groups visiting the exhibition were sent links to the resource to utilise as part of their visit. This web resource added layers of education to the exhibition through the videos, additional reading and linked resources.

Gallery Guides in particular appreciated the insights into the exhibition from Sara Engledow's excellent exhibition essay. 12 Gallery Guides attended her Curator Talk on Friday 4 May.

Anecdotal evidence suggests that visitors were thrilled to see the portraits of Dame Elizabeth Murdoch and Donald Bradman on display. These treasured favourites of the NPG collection were incredibly popular with Gallery visitors in our region.

white noise The White Noise exhibition has been helpful for students and teachers to further connect with the genre of still life and to establish connections to Margaret Olley's practice. The connections between this exhibition and *Mystery of Things: Margaret Olley and David Strachan* and *Portrait* by Kirsten Coelho were also valuable. Gallery Guides and teachers appreciated being directed to Angus McDonald's website and short film Black and Blue on vimeo to better understand his practice, and gain further insights into how an artist can approach still life subject matter.

Mark Tedeschi: Shooting around corners

The comprehensive Education Resource provided by Maitland Regional Art Gallery was made available through the Gallery's website but unfortunately downloads cannot be tracked at this stage. All school groups visiting the exhibition were sent the Education Resource directly to utilise as part of their visit. 4 Gallery Guides attended the Mark Tedeschi talk on Sunday 6 March.

This exhibition period included the display of the *Archibald Prize 2015 regional tour* exhibition, and the Gallery experienced high levels of visitation by school groups. Although formal guided tours were not offered during this period, the EADO conducted a number of short introductions to the genre of portraiture to booked groups. This exhibition was very complementary to the Archibald Prize and it was valuable for the EADO to focus students' attention on Tedeschi's various approaches to portraiture through photography.

Volunteer Guides & Guided tours

One or two free guided tours were presented daily (Wednesday – Sunday) from 11.30am to the general public. Community groups who book their visit can request a special tour hosted by Volunteer Gallery Guides. The Gallery now charges \$2.00 pp for these tours with the proceeds supporting Education Programs. The group tours include the history of the Gallery and exhibitions on display, including MOAC. These have been incredibly popular with groups and we are taking bookings many months in advance.

Volunteer Guide Training and Changeover Meetings with EADO:

A training session for Gallery Guides, conducted by the Gallery's Education and Audience Development Officer (EADO), was attended by 7 guides. During this session Education Resources for new exhibitions, including individual ABOUT sheets, were distributed to assist with their preparation for guiding groups through the exhibition.

Guided Tours	Number of tours	Attendance numbers
Free daily tours for the general public Depending on visitor numbers, either one or two guided tours were conducted by Volunteer Gallery Guides at 11.30am each day	64	451
Tours/introductions for Booked Groups Guided tours for community/school groups, conducted by Volunteer Gallery Guides	12	174
Introductory talks, conducted by Gallery staff or Volunteer Guides	1	44
	77	669

CATALOGUES

Uncommon Australians: the vision of Gordon and Marilyn Darling – The quality, style and content of this publication was of a very high standard. That said, during the exhibition period visitors purchased only 7 x copies of the catalogue. We can only surmise that the rrp. of \$49.95 (w'sale \$24.95) was a little higher than the average spend of Gallery visitors on publications.

ART SALES and ACQUISITIONS

Peregrination: Rick Shearman - This exhibition achieved a wonderful result in regard to art sales. A total of 12 framed and 30 unframed works were made available for purchase for modest retail prices ranging from \$50.00 to \$300.00. From that number, 9 framed works (+ 2 additional framed works from the print edition) and 13 unframed works sold to Gallery visitors. This resulted in total retail sales of \$3,650, consisting of \$2,664.50 artist payment and \$985.50 Gallery commission. All enquiries regarding sales of additional prints from editions were forwarded to the artist, who reported further sales through this avenue.

white noise Angus McDonald -As requested by the artist, all sales enquiries received were directed to the artist's nominated contact person. We understand that a number of sales were achieved as a result of this exhibition.

Pieta 2016, oil on canvas 200 x 225cm - The Friends of Tweed Regional Gallery & Margaret Olley Art Centre Inc. are currently in discussion in regard to purchasing, for the Gallery's collection, the large work titled *Pieta* that acted as a spectacular centrepiece of the exhibition.

PROMOTION

Website – <http://www.tweed.nsw.gov.au/artgallery> - includes general information on the Gallery's exhibition schedule and other specific exhibition related material eg: education resources and links to touring agencies websites.

During this exhibition period the Gallery's "Current Exhibitions" webpage attracted page views = 3,094

Other online listings include:

Museums & Galleries NSW

www.mgnsw.org.au

Arts Northern Rivers

www.artsnorthernrivers.com.au

Echonet daily (online)

www.echonetdaily.net.au

Destination Tweed

www.destinationtweed.com.au

Live Guide

www.liveguide.com.au

Big Volcano Tourism

www.bigvolcanotourism.wordpress.com

Sunshine Coast Daily

www.sunshinecoastdaily.com.au

Media Releases – distributed widely through the Tweed Shire Council's Customer and Communication Services Unit.

Invitations – 2,500 copies distributed. 1,500 to the Friends of the Gallery mail list, with additional copies distributed to mail lists of relevant agencies, touring bodies, exhibiting artists, local media, education and tourism facilities and Gallery visitors.

Gallery Exhibition Program – 5,000 distributed to Friends of the Gallery mail list, arts and media organisations, schools, tourism operators and Gallery visitors.

Advertisements – advertising schedule may include national periodicals (eg: Imprint, Art Monthly), local newspapers (eg: Tweed Daily News, Byron Shire Echo), free publications (eg: Tweed Valley Weekly) and the Tweed Shire Council newsletter (Tweed Link) distributed to all shire households.

Radio Interviews

Interview with Gallery Director re: <i>Uncommon Australians, Peregrination</i> and <i>white noise</i>	ABC Gold Coast	04/03/16
---	----------------	----------

MEDIA COVERAGE

The cessation of a number of regional print publications, including the weekly *Tweed Shire Echo* and daily *Tweed Daily News*, has had a significant impact on the coverage and reporting of Gallery exhibitions and events. These publications are now published online only. It is unfortunate and frustrating, that despite the Gallery's inclusion of appropriate image credits, and relevant taglines and logos on all media releases and promotional documents, media agencies regularly fail to include the information in published articles. See copies of media coverage attached.

General

"New exhibitions at Gallery"	Tweed Link	08/03/16
------------------------------	------------	----------

Uncommon Australians: the vision of Gordon and Marilyn Darling

"Tweed gallery celebrates vision of the Darlings"	www.echo.net.au	10/03/16
---	--	----------

"Tweed gallery celebrates vision of the Darlings"	www.myinforms.com	09/03/16
---	--	----------

Peregrination Rick Shearman

"Artist shows his 'world away from Byron Bay'"	www.echo.net.au	17/03/16
--	--	----------

white noise Angus McDonald

"White Noise"	Byron Shire Echo	28/02/16
---------------	------------------	----------

"Escape the busy-ness of life and check out White Noise"	Northern Star online	29/02/16
--	----------------------	----------

"Angus probes White Noise"	Northern Star (Lismore)	01/03/16
----------------------------	-------------------------	----------

"Artist's homecoming – McDonald's fist local show in a decade"	Ballina Shire Advocate	02/03/16
--	------------------------	----------

"White noise never looked so good"	www.echo.net.au	07/03/16
------------------------------------	--	----------

"Archibald finalist in new show"	www.tweeddailynews.com.au	08/03/16
----------------------------------	--	----------

"Archibald finalist in new show"	Tweed Daily News	09/03/16
----------------------------------	------------------	----------

"Angus McDonald – White Noise"	www.lennoxwave.com	23/02/16
--------------------------------	--	----------

Mark Tedeschi: shooting around corners

"Senior prosecutor with an eye for detail visits Tweed"	www.echo.net.au	25/11/16
---	--	----------

"Rare insight into the art of justice"	Tweed Daily News	25/11/16
--	------------------	----------

"Last chance – art and music"	Tweed Link	23/02/16
-------------------------------	------------	----------

GENERAL GALLERY BUSINESS

The Border Art Prize 2016

The next meeting's report will cover *The Border Art Prize* in more detail.

In 2016 the Gallery displayed 279 artworks out of a total of 370 entries received at the Gallery. This is similar to 2014 when 275 works were shown. NB: (16 artworks were not delivered due to calamity, forgetfulness or other).

Unsurprisingly, the highest entries numbers are from Tweed Shire and Gold Coast City. Tweed Shire comes out just ahead of Gold Coast City on exhibition numbers, with 90 exhibitors to Gold Coast's 83. This is consistent with the slightly higher entry numbers from Tweed Shire residents.

This exhibition continues to be very popular with visitors, and it was lovely for the Gallery to receive excellent feedback from exhibitors and visitors alike. Much credit is owed to staff member Anouk Beck, Curator: Public Programs for her co-ordination of this mammoth task. Our gratitude is also extended to those many volunteers who so readily gave their time to facilitate the delivery and collection of so many artworks. This process was also co-ordinated by Anouk Beck. Many improvements were made to the efficient processing of art sales through *The Border Art Prize*. In contrast to previous awards, each sale was processed immediately, with quotations sought for freight delivery to buyers' homes, and processing of artists' payments in a timely manner. The result of this process was that all artworks purchased from the exhibition had left the Gallery for their new destinations within a week of the exhibition's close. Requisite financial paperwork and payments to artists were also streamlined to facilitate more efficient payment processes for artists and the Gallery's budget lines. This was an extraordinary effort on the part of the Art Sales & Reception Officer, Leonie Woodham, in conjunction with the Operations & Business Officer, Greg Puch.

The Gallery has begun discussions with the Gold Coast City Gallery's newly-appointed Director, Tracy Cooper-Lavery, regarding working towards a consistent approach to future *Border Art Prize* across both venues.

GALLERY MERCHANDISING

A new range of merchandise has been developed for retail and wholesale through the Gallery Shop, utilising the art works by Margaret Olley in the Gallery's collection.

A 2017 calendar has been developed, in a smaller A4 format for 2017, along with a Memory Card game and two additional larger format postcards.

It is very pleasing to see how well existing MOAC-branded merchandising sells through the Shop, and further afield. The production of a number of these merchandising lines have been financially assisted through the generosity of the Friends of Tweed Regional Gallery and Margaret Olley Art Centre Inc.

The catalogue publication accompanying *The Mystery of Things: Margaret Olley and David Strachan* will be entered, along with the exhibition itself and complimentary programming, including the new iPad application, to the Museums & Galleries NSW IMAGinE Awards.

BUSINESS EXCELLENCE AWARDS – TWEED (BEATS)

The Gallery has been selected as a finalist in the BEATS Awards 2016 in the category of Excellence in Visitor Experience.

The Gallery received word that our business has demonstrated business excellence in our category and has progressed to the next round of judging. The second round of judging is undertaken by the School of Business and Tourism, Southern Cross University. The winners will be announced at an event on Saturday 30 July.

ACQUISITIONS TO THE COLLECTION

The Committee is asked to ratify the acquisition of 26 artworks to the collection. An acquisitions document generated from the Collection Management System, Vernon, is attached to this report.

This group of acquisitions includes those works acquired through the *Olive Cotton Award for photographic portraiture*, two artists prints acquired through the Print Council of Australia's annual print commission project and a number of hand coloured linocuts by artist David Preston.

Susi Muddiman OAM, Gallery Director
25 July 2016

Moved: Shirley Kennedy
Seconded: Hobie Porter

Unanimous

General Business:

Louise Devine commented on the collection show, A-Z: from the collection. Louise said that the show is fantastic; the seven year old who attended with Louise was totally engaged with the exhibition.

Director Muddiman advised the Committee members of the need to submit expressions of interest for membership of the Art Gallery Advisory Committee. These EOI's are in line with the Council elections for the term of 3 years. Director Muddiman provided details of the Council website link and EOI forms. The applications are open and Committee members can apply on line or in writing up until Friday 23 September 2016.

Director Muddiman will be interviewing Dr Michael Brand at Art in the Pub on Sunday 6 August as part of the Gallery's partnership with the Byron Writers Festival.

Next Meeting:

The next meeting of the Art Gallery Advisory Committee will be held Wednesday 9 November 2016.

The meeting closed at 5.50pm.

EXECUTIVE MANAGEMENT TEAM'S COMMENTS:

Nil.

EXECUTIVE MANAGEMENT TEAM'S RECOMMENDATIONS:

Nil.

COUNCIL IMPLICATIONS:

a. Policy:

Code of Meeting Practice.

Terms of Reference - Reviewed 21 August 2012.

b. Budget/Long Term Financial Plan:

Not applicable.

c. Legal:

Not Applicable.

d. Communication/Engagement:

Inform - We will keep you informed.

UNDER SEPARATE COVER/FURTHER INFORMATION:

Nil.

17 [SUB-TRC] Minutes of the Tweed River Committee Meeting held Wednesday 10 August 2016

SUBMITTED BY: Natural Resource Management

Valid



Caring for the Environment

LINKAGE TO INTEGRATED PLANNING AND REPORTING FRAMEWORK:

- 4 Caring for the Environment
 - 4.3 Maintain and enhance Tweed's waterways and its catchments
 - 4.3.1 Manage water resources sustainably and minimise impact on the environment by achieving more integration of water supply, wastewater and stormwater services
-

SUMMARY OF REPORT:

The Minutes of the Tweed River Committee Meeting held Wednesday 10 August 2016 are reproduced in the body of this report for the information of Councillors.

RECOMMENDATION:

That:

- 1. The Minutes of the Tweed River Committee Meeting held Wednesday 10 August 2016 be received and noted; and**
- 2. The Executive Management Team's recommendations be adopted as follows:**

A2. PFAS Contamination at Gold Coast Airport

That Council writes to the NSW Environment Protection Authority requesting that testing of seafood from Cobaki and Terranora Broadwater, and the Tweed Estuary, be expedited in order to assess the risk of human exposure to the PFAS/PFOS contaminants derived from Gold Coast Airport.

REPORT:

The Minutes of the Tweed River Committee Meeting held Wednesday 10 August 2016 are reproduced as follows for the information of Councillors.

Venue:

Canvas & Kettle Meeting Room

Time:

9.00am

Present:

Rhonda James (Restoration Industry); (Chair); Cr Katie Milne; Robert Quirk (NSW Cane Growers' Association); Claire Masters (Tweed Landcare Inc); Scott Petersen (Tweed River Charter Operators); Sam Dawson (Caldera Environment Centre); Max Boyd (Community Representative); Bob Modystack (Community Representative); Lindy Smith (Community Representative); Jane Lofthouse, Tom Alletson.

Apologies:

Ben Fitzgibbon (Office of Environment and Heritage); Pat Dwyer (Department of Primary Industries - Fisheries NSW).

Minutes of Previous Meeting:

Moved: Robert Quirk

Seconded: Max Boyd

RESOLVED that the Minutes of the Tweed River Committee meeting held Monday 13 June 2016 be accepted as a true and accurate record of the proceedings of that meeting.

Business Arising:

BA1. Earth moving contractor workshop

Tom provided feedback from the earth moving contractor education workshop that was held on 27 July. It was noted that attendance was only moderately successful with 10 in attendance from 20 positive RSVP's. There was interest expressed at the workshop for a session specific to the cane industry which could be delivered at the cane industry AGM or similar industry based function.

Agenda Items:

A1. Visit by River Tweed delegate from Scotland

Derek Robeson from the Tweed Forum was hosted by TSC in July. Tom provided an overview of the visit and noted some of the key similarities and differences between the river management programs and Australian/Scottish landscapes.

A2. PFAS Contamination at Gold Coast Airport

Tom read a letter that was supplied by NSW EPA (addressed to Gold Coast Airport) outlining their involvement in the PFAS management issue on airport land. Tom also advised that on 11.8.16 he would be attending a meeting with staff from Gold Coast City

Council, QLD Health, Airport and Air Services Australia where more information on the extent of contamination would be made available.

The issue of the potential for contamination of organisms in Cobaki Broadwater, particularly species harvested as seafood, was discussed.

Moved: Robert Quirk

Second: Sam Dawson

RECOMMENDATION:

That Council writes to the NSW Environment Protection Authority requesting that testing of seafood from Cobaki and Terranora Broadwater, and the Tweed Estuary, be expedited in order to assess the risk of human exposure to the PFAS/PFOS contaminants derived from Gold Coast Airport.

A3. Tweed Estuary Coastal Management Program

Katie Pratt and Mick Howland from Hydrosphere Consulting provided a detailed presentation on the scope and methodology of matters being addressed through the preparation of a new Tweed Estuary management plan.

The importance of community consultation and gauging community values of the river and attitudes towards its use, particularly in relation to recreation, was stressed. Interest was expressed in the Tweed River Committee having input into the questionnaire being prepared for the proposed phone survey to be conducted to inform community values. It was agreed that a draft copy of the survey would be circulated to the Committee for comment prior to finalisation.

All Tweed River Committee attendees detailed their aspirations for the process of preparing a management plan.

A number of suggestions were made on the methodology to be used in presenting the draft plan to the community and gaining feedback through the exhibition process. Cr Milne noted that community drop in sessions had the potential to reduce people's awareness of other people's positions and issues, as there was not as much public debate. It was noted that the format of consultation exercises undertaken for the rural land strategy and the rural villages strategies were very good. Tom committed to following up on these methods with the strategic planning unit and providing information on them to Hydrosphere.

A4. Tweed River Committee Nomination Process

Tom noted that this was the final meeting for this term of the Tweed River Committee and thanked the members for their input. The work program for the period 2012-2016 was shared with some reflections on what had been achieved. Tom encouraged the members to nominate again and outlined the process.

Rhonda James thanked Tom and Matt Bloor for their efforts in implementing the waterways management program and acting on the recommendations of the Committee over its term.

General Business:

Nil.

Next Meeting:

The next meeting of the Tweed River Committee will be held following the Council election and reappointment of membership.

The meeting closed at 12:30pm

EXECUTIVE MANAGEMENT TEAM'S COMMENTS:

A2. PFAS Contamination at Gold Coast Airport

Nil.

EXECUTIVE MANAGEMENT TEAM'S RECOMMENDATIONS:

A2. PFAS Contamination at Gold Coast Airport

That Council writes to the NSW Environment Protection Authority requesting that testing of seafood from Cobaki and Terranora Broadwater, and the Tweed Estuary, be expedited in order to assess the risk of human exposure to the PFAS/PFOS contaminants derived from Gold Coast Airport.

COUNCIL IMPLICATIONS:

a. Policy:

Code of Meeting Practice.

Terms of Reference - Adopted by Council 24 January 2013 (ECM2939677)

b. Budget/Long Term Financial Plan:

Not applicable.

c. Legal:

Not Applicable.

d. Communication/Engagement:

Inform - We will keep you informed.

UNDER SEPARATE COVER/FURTHER INFORMATION:

Nil.

18 [SUB-LTC] Minutes of the Local Traffic Committee Meeting held Thursday 11 August 2016

SUBMITTED BY: Roads and Stormwater

Valid



Supporting Community Life

LINKAGE TO INTEGRATED PLANNING AND REPORTING FRAMEWORK:

2	Supporting Community Life
2.4	An integrated transport system that services local and regional needs
2.4.1	Provide a safe and efficient network of arterial roads connecting neighbourhoods to town centres, employment, shopping, health, commercial and education facilities

SUMMARY OF REPORT:

The Minutes of the Local Traffic Committee Meeting held Thursday 11 August 2016 are reproduced in the body of this report for the information of Councillors.

RECOMMENDATION:

That:

- 1. The Minutes of the Local Traffic Committee Meeting held Thursday 11 August 2016 be received and noted; and**
- 2. The Executive Management Team's recommendations be adopted as follows:**

A1 [LTC] Nullum Street, Murwillumbah

That:

- 1. The “no stopping” zone on the western side of Nullum Street, Murwillumbah adjacent to Sathya Sai Primary School be increased to 9m from the crossing.***
- 2. The Police be requested to enforce the speed limit during school zone hours on Nullum Street, Murwillumbah.***

A2 [LTC] Buchanan Street, South Murwillumbah

That a “No Stopping” zone be installed on the western side of Buchanan Street from Tweed Valley Way to 15 metres south of the petrol station's driveway.

A3 [LTC] Wharf Street, Murwillumbah

That the existing loading zone on Wharf Street, Murwillumbah adjacent to Ju Ju's Café be converted to a two hour parking in business hours 9.00am to 5.00pm Monday to Friday and 9.00am to 12.00pm Saturday zone.

A4 [LTC] Tweed's Biggest Dinner Party - Murwillumbah and Wharf Streets, Murwillumbah

There are no objections to the temporary closure of Murwillumbah Street and Wharf Street, Murwillumbah for the conduct of the Tweed's Biggest Dinner Party on 3 December 2016, subject to the following conditions:

- 1. Conformance with a Traffic Management Plan and associated Traffic Control Plans implemented and controlled by Roads & Maritime Services accredited persons.*
- 2. Community and affected business consultation addressing raised concerns including a letterbox drop to directly affected residents.*
- 3. The event organiser notifies Tweed residents of the impact of their event by advertising in the Tweed Link at their expense a minimum of one week prior to the operational impacts taking effect. The advertising must include the event name, specifics of any traffic impacts or road closures and times, alternative route arrangements, event organiser, a personal contact name and a telephone number for all event related enquiries or complaints.*
- 4. Consultation with bus and taxi operators and arrangements made for provision of services during conduct of the event.*
- 5. Adequate public liability insurance being held by the event organiser.*
- 6. All signage erected for the event to not cause a hazard for motorists or pedestrians and be removed immediately following the completion of the event.*
- 7. Consultation with emergency services and any identified issues addressed.*
- 8. Arrangements made for private property access and egress affected by the event.*
- 9. That the applicant organise for the event to be listed on Council's Calendar of Events web page. Go to www.tweed.nsw.gov.au Our Community/Festivals Events and Filming/Calendar of Events and access the Calendar of Events site to upload the event details.*
- 10. The submission and approval of a Community Event application/Major Event application and compliance with any conditions imposed therein.*

A5 [LTC] Alma Street and Tweed Valley Way, South Murwillumbah

That the designation of a B-Double route on Tweed Valley Way from Buchanan Street to Alma Street, South Murwillumbah is not supported.

A6 [LTC] Sunshine Avenue, Tweed Heads South

That the existing “No Parking / No Stopping” sign on Sunshine Avenue, Tweed Heads South which is located approximately ten metres north of the driveway entrance to Lindisfarne Anglican Grammar School be relocated south ten metres to the driveway entrance.

A7 [LTC] Oxford Street, Kingscliff

That the end 45 degree angle parking space on Oxford Street, Kingscliff closest to Kingscliff High School be converted to motorcycle parking as per AS2890.5.

A8 [LTC] Loading Zone on Coronation Avenue, Pottsville

That the two loading zones on Coronation Avenue, Pottsville near the butchers shop be made into one loading zone and that it be signposted “Loading Zone 7.00am to 9.00am Monday to Friday”.

REPORT:

The Minutes of the Local Traffic Committee Meeting held Thursday 11 August 2016 are reproduced as follows for the information of Councillors.

VENUE:

Mt Warning Meeting Room

TIME:

Commencing at 9.30am

PRESENT:

Committee Members: Cr Barry Longland, Mr Joshua Buckham, Roads and Maritime Services of NSW.

Informal: Mr Ray Clark (Chairman), Miss Alana Brooks, Mr Nick Tzannes, Ms Linda Cooper (Minutes Secretary).

APOLOGIES:

Snr Constable Tony Darby, NSW Police, Mr Thomas George MP, Member for Lismore, Mr Col Brooks, alternate rep for Mr Thomas George MP, Member for Lismore, Mr Geoff Provest, Member for Tweed, Mr Rod Bates, alternate rep for Mr Geoff Provest MP, Member for Tweed.

CONFIRMATION OF MINUTES OF PREVIOUS MEETING

MIN1 [LTC] Confirmation of Previous Minutes Meeting held 14 July 2016

ORIGIN:

Roads & Stormwater

RESOLVED that the Minutes of the Local Traffic Committee Meeting held 14 July 2016 be adopted as a true and accurate record of proceedings of that meeting.

SCHEDULE OF OUTSTANDING RESOLUTIONS

SCH1 [LTC-SOR] Schedule of Outstanding Resolutions - 11 August 2016

ORIGIN:

Roads & Stormwater

SUMMARY OF REPORT:

No Outstanding Resolutions for meeting held 11 August 2016.

BUSINESS ARISING

BA1 [LTC-LATE] Queensland Elite, Under 19 & Masters Individual Time Trial Championships 2016

ORIGIN:
Roads & Stormwater

FILE NO: ECM 4161369; Traffic - Committee; Festivals Events - Other; Bicycle Matters - General; Dulguigan Road, Dungay; Urliup Road; McAuleys Road; Pat Smith Park

SUMMARY OF REPORT:

This item was approved by Local Traffic Committee at its meeting held 12 May 2016 and confirmed by Council at its meeting held 19 May 2016.

Further advice has been received from Murwillumbah Cycle Club that the event was unable to be held on Sunday 19 June 2016 due to weather conditions. Amended approval is now requested for the event to be held on Saturday 27 August.

It should be noted that the day of the event has now been changed from a Sunday to a Saturday.

The previous resolution is as follows:

"That the proposed Queensland Elite, Under 19 & Masters Individual Time Trial Championships 2016 on Sunday 19 June 2016 be supported, subject to:

- 1. NSW Police approval being obtained.*
- 2. Endorsement of the event by Cycling Queensland.*
- 3. Conformance with a Traffic Management Plan and associated Traffic Control Plans implemented and controlled by Roads & Maritime Services accredited persons.*
- 4. Community and affected business consultation addressing raised concerns including a letterbox drop to directly affected residents.*
- 5. The event organiser notifies Tweed residents of the impact of their event by advertising in the Tweed Link at their expense a minimum of one week prior to the operational impacts taking effect. The advertising must include the event name, specifics of any traffic impacts or road closures and times, alternative route arrangements, event organiser, a personal contact name and a telephone number for all event related enquiries or complaints.*
- 6. Adequate public liability insurance being held by the event organiser.*
- 7. All signage erected for the event to not cause a hazard for motorists or pedestrians and be removed immediately following the completion of the event.*
- 8. Consultation with emergency services and any identified issues addressed.*
- 9. Arrangements made for private property access and egress affected by the event.*

10. *That the applicant organise for the event to be listed on Council's Calendar of Events web page. Go to www.tweed.nsw.gov.au Our Community/Festivals Events and Filming/Calendar of Events and access the Calendar of Events site to upload the event details.*
11. *The submission and approval of a Community Event application/Major Event application and compliance with any conditions imposed therein.*
12. *The event be conducted and signposted (where applicable this supersedes signposting in accordance with RMS Guide to Traffic Control at Worksites) in accordance with the current RMS Guidelines for Bicycle Road Races to ensure consistency across the network.*
13. *A report be provided to Council, by the event organiser, within 2 weeks of conduct of the event, showing compliance with the above conditions."*

COMMITTEE ADVICE:

That the proposed Queensland Elite, Under 19 & Masters Individual Time Trial Championships 2016 previously supported for Sunday 19 June 2016 be amended to be held on Saturday 27 August 2016, subject to:

1. NSW Police approval being obtained.
2. Endorsement of the event by Cycling Queensland.
3. Conformance with an updated Traffic Management Plan and associated Traffic Control Plans implemented and controlled by Roads & Maritime Services accredited persons.
4. Community and affected business consultation addressing raised concerns including a letterbox drop to directly affected residents.
5. The event organiser notifies Tweed residents of the impact of their event by advertising in the Tweed Link at their expense a minimum of one week prior to the operational impacts taking effect. The advertising must include the event name, specifics of any traffic impacts or road closures and times, alternative route arrangements, event organiser, a personal contact name and a telephone number for all event related enquiries or complaints.
6. Adequate public liability insurance being held by the event organiser.
7. All signage erected for the event to not cause a hazard for motorists or pedestrians and be removed immediately following the completion of the event.
8. Consultation with emergency services and any identified issues addressed.
9. Arrangements made for private property access and egress affected by the event.
10. That the applicant organise for the event to be listed on Council's Calendar of Events web page. Go to www.tweed.nsw.gov.au Our Community/Festivals Events and Filming/Calendar of Events and access the Calendar of Events site to upload the event details.
11. The submission and approval of a Community Event application/Major Event application and compliance with any conditions imposed therein.
12. The event be conducted and signposted (where applicable this supersedes signposting in accordance with RMS Guide to Traffic Control at Worksites) in accordance with the current RMS Guidelines for Bicycle Road Races to ensure consistency across the network.
13. A report be provided to Council, by the event organiser, within 2 weeks of conduct of the event, showing compliance with the above conditions.

A. FORMAL ITEMS SECTION

DELEGATIONS FOR REGULATORY DEVICES - MURWILLUMBAH

A1 [LTC] Nullum Street, Murwillumbah

ORIGIN:

Roads & Stormwater

FILE NO: ECM 4166158; Traffic - Committee; Traffic - Pedestrian Crossings; Traffic - School Zones; Pedestrian Safety; School - Sathya Sai Primary

SUMMARY OF REPORT:

Request received for a pedestrian crossing on Nullum Street:

"At our last P & F meeting, parents brought up their concerns with regards to the school crossing.

Even with the flashing lights and signs it has been brought to my attention that some cars are still not slowing down.

Our P & F will like to know if we qualify for a zebra crossing with the increase of local traffic due to the playground at Knox Park".

This location would not meet the minimum warrants for a marked pedestrian crossing, however improvements could be made to the existing crossing to improve safety.

Officers noted that the school zone patches were past their useful life and it was recommended that a formal request be put to the RMS to include in their maintenance schedule a review of the school zone patches in the Murwillumbah area.

RECOMMENDATION TO COUNCIL:

That:

1. The "no stopping" zone on the western side of Nullum Street, Murwillumbah adjacent to Sathya Sai Primary School be increased to 9m from the crossing.
2. The Police be requested to enforce the speed limit during school zone hours on Nullum Street, Murwillumbah.

FOR VOTE - Unanimous

A2 [LTC] Buchanan Street, South Murwillumbah

ORIGIN:
Roads & Stormwater

FILE NO: Traffic - Committee; Traffic - Parking Zones; Buchanan Street

SUMMARY OF REPORT:

A request has been received for a "No Stopping" zone to be installed on the western side of Buchanan Street from Tweed Valley Way to 15 metres south of the petrol station's driveway.

Parking in this vicinity reportedly impacts the traffic flow during peak times and cars turning left are forced to wait in a queue with right hand turning vehicles.

RECOMMENDATION TO COUNCIL:

That a "No Stopping" zone be installed on the western side of Buchanan Street from Tweed Valley Way to 15 metres south of the petrol station's driveway.

FOR VOTE - Unanimous

A3 [LTC] Wharf Street, Murwillumbah

ORIGIN:
Roads & Stormwater

FILE NO: Traffic - Committee; Traffic - Loading Zones; Wharf Street

SUMMARY OF REPORT:

Request received to review the loading zone adjacent to Ju Ju's Café on Wharf Street, Murwillumbah.

Officers have consulted with the owner of Ju Ju's Café who had no concerns with the removal of the loading zone and the installation of a two hour parking zone which can be used by all motorists. It is noted that there is a loading zone within close proximity to this area on Queen Street.

RECOMMENDATION TO COUNCIL:

That the existing loading zone on Wharf Street, Murwillumbah adjacent to Ju Ju's Café be converted to a two hour parking in business hours 9.00am to 5.00pm Monday to Friday and 9.00am to 12.00pm Saturday zone.

FOR VOTE - Unanimous

A4 [LTC] Tweed's Biggest Dinner Party - Murwillumbah and Wharf Streets, Murwillumbah

ORIGIN:
Roads & Stormwater

FILE NO: ECM 4164324; Traffic - Committee; Festivals/Events - Other; Roads - Closures - Temporary including Traffic; Murwillumbah Street; Queen Street; Wharf Street

SUMMARY OF REPORT:

Request received from Tweed Foodie Fest to close Murwillumbah and Wharf Streets between Commercial Road and Brisbane Street, Murwillumbah on 3 December 2016 between midday and 10.00pm to host the Tweed's Biggest Dinner Party event.

RECOMMENDATION TO COUNCIL:

There are no objections to the temporary closure of Murwillumbah Street and Wharf Street, Murwillumbah for the conduct of the Tweed's Biggest Dinner Party on 3 December 2016, subject to the following conditions:

1. Conformance with a Traffic Management Plan and associated Traffic Control Plans implemented and controlled by Roads & Maritime Services accredited persons.
2. Community and affected business consultation addressing raised concerns including a letterbox drop to directly affected residents.
3. The event organiser notifies Tweed residents of the impact of their event by advertising in the Tweed Link at their expense a minimum of one week prior to the operational impacts taking effect. The advertising must include the event name, specifics of any traffic impacts or road closures and times, alternative route arrangements, event organiser, a personal contact name and a telephone number for all event related enquiries or complaints.
4. Consultation with bus and taxi operators and arrangements made for provision of services during conduct of the event.
5. Adequate public liability insurance being held by the event organiser.
6. All signage erected for the event to not cause a hazard for motorists or pedestrians and be removed immediately following the completion of the event.
7. Consultation with emergency services and any identified issues addressed.
8. Arrangements made for private property access and egress affected by the event.
9. That the applicant organise for the event to be listed on Council's Calendar of Events web page. Go to www.tweed.nsw.gov.au Our Community/Festivals Events and Filming/Calendar of Events and access the Calendar of Events site to upload the event details.
10. The submission and approval of a Community Event application/Major Event application and compliance with any conditions imposed therein.

FOR VOTE - Unanimous

A5 [LTC] Alma Street and Tweed Valley Way, South Murwillumbah

ORIGIN:
Roads & Stormwater

FILE NO: ECM 4154754; Traffic - Committee; Traffic - Weight of Vehicles (incl. B-Doubles); Alma Street; Tweed Valley Way

SUMMARY OF REPORT:

Boral Timbers have requested to extend the B-Double route to the intersection of Alma Street and Tweed Valley Way, South Murwillumbah. They believe that B-Doubles leaving their front gate heading north on Tweed Valley Way are at risk of collision with other road users when they cross the roadway.

If B-Doubles were to head south and use the roundabout at Alma Street to turn back to the north, Boral feel that this would be a much safer option.

An officer from Council spoke to the Transport Manager from Boral recently as he enquired about the suggested inclusion to the route. They discussed some options in regards to the B-Doubles leaving the rear of Boral Timbers via Mayfield Street, however they would still be crossing Tweed Valley Way similar to their front entrance.

It is unlikely that a larger B-Double would be able to carry out a U-turn at the Alma Street / Tweed Valley Way roundabout without utilising two lanes. Scheduling deliveries outside busy times may be an option for the business. The expected extra time for the B-Double to turn left out of the driveway and then carry out a U-turn at the roundabout may not result in a safer outcome than waiting for an appropriate gap in traffic when existing right from the driveway.

It was noted that currently heavy vehicles and B-Doubles carry out right turns from Buchanan Street.

RECOMMENDATION TO COUNCIL:

That the designation of a B-Double route on Tweed Valley Way from Buchanan Street to Alma Street, South Murwillumbah is not supported.

FOR VOTE - Unanimous

DELEGATIONS FOR REGULATORY DEVICES - TWEED HEADS

A6 [LTC] Sunshine Avenue, Tweed Heads South

ORIGIN:

Roads & Stormwater

FILE NO: ECM 4165873; Traffic - Committee; Traffic - Parking Zones; Signs - Traffic Issues; School - Lindisfarne Anglican Primary

SUMMARY OF REPORT:

Request received to discuss traffic flow problems at school pick up time:

"In consultation with Tweed Shire Council and Bitzios Traffic Engineers we revised and upgraded student pick up and car flow on Sunshine Avenue in 2012. Parents remain in line on Sunshine Avenue as they enter the School pick up area. There is currently a "No Stopping" sign installed on Sunshine Avenue.

Parents are required to stop otherwise they would collide with the vehicle in front of them.

At all times they aim to keep flowing.

We had a parent fined in relation to this and would like to discuss with a representative of Tweed Shire Council to see if we could resolve the matter."

Officers reviewed the infringement notice and determined that the driver was not queueing and was stationary in the "no stopping zone". It was determined that the existing "no stopping" zone on approach to the driveway could be reduced without compromising safety.

RECOMMENDATION TO COUNCIL:

That the existing "No Parking / No Stopping" sign on Sunshine Avenue, Tweed Heads South which is located approximately ten metres north of the driveway entrance to Lindisfarne Anglican Grammar School be relocated south ten metres to the driveway entrance.

FOR VOTE - Unanimous

A7 [LTC] Oxford Street, Kingscliff

ORIGIN:

Roads & Stormwater

FILE NO: ECM 4158782; Traffic - Committee; Traffic - Parking Zones; School - Kingscliff High

SUMMARY OF REPORT:

Request received to convert one of the car parking spaces outside of Kingscliff High School on Oxford Street into motorcycle parking.

Parking for developments including schools should be provided onsite. However, converting a car parking space to multiple motorcycle parking on Oxford Street near the school may actually increase the availability of parking for other vehicles.

RECOMMENDATION TO COUNCIL:

That the end 45 degree angle parking space on Oxford Street, Kingscliff closest to Kingscliff High School be converted to motorcycle parking as per AS2890.5.

FOR VOTE - Unanimous

A8 [LTC] Loading Zone on Coronation Avenue, Pottsville

ORIGIN:

Roads & Stormwater

FILE NO: ECM 4091773; Traffic - Committee; Traffic - Loading Zones; Traffic - Parking Zones; Coronation Avenue, Pottsville

SUMMARY OF REPORT:

Request received for the two loading zones on Coronation Avenue, Pottsville near the butchers shop be made into one loading zone and that it be signposted "Loading Zone 7.00am to 12.00pm Monday to Friday".

Consultation with adjacent business owners found that the only deliveries belong to the butchers between 7.00 and 9.00am on weekdays and require use of both zones due to the size of their trucks. The chemist rarely uses the loading zone and supported the modification.

RECOMMENDATION TO COUNCIL:

That the two loading zones on Coronation Avenue, Pottsville near the butchers shop be made into one loading zone and that it be signposted "Loading Zone 7.00am to 9.00am Monday to Friday".

FOR VOTE - Unanimous

A9 This item has been moved to B6

B. INFORMAL ITEMS SECTION

GENERAL TRAFFIC ADVICE - MURWILLUMBAH

B1 [LTC] Myrtle Street, Murwillumbah

ORIGIN:

Roads & Stormwater

FILE NO: ECM 4115770; Traffic - Committee; Traffic - Control; Traffic - Linemarking; Traffic - Parking Zones; Traffic - Safety; Myrtle Street

SUMMARY OF REPORT:

Request received to discuss traffic control issues occurring at Myrtle Street, Murwillumbah. Customer has suggested the following solutions:

- "1. Myrtle Street is very narrow, with steep and very curving sections (only just fits two vehicles passing) and people are currently allowed to park in the street which makes passing on the curves extremely dangerous. 'No Parking' signage or line-marking is suggested.*
- 2. Myrtle Street is very steep from Spring Lane to the 'Stop Sign' at Byangum Road. The 'Stop Sign' is ignored by a majority of drivers as they gather speed down the hill approaching Byangum Road. 'Speed humps' or traffic control devices are requested to slow the traffic in this section of Myrtle Street.*
- 3. Due to the very moderate and merging way Byangum Road and Myrtle Street intersect at the western end, vehicles turning right into Myrtle Street from Byangum Road will maintain their speed (60 or more km per hour) and dangerously enter the intersection. It is suggested that there be no right hand turn here. Traffic can then safely enter Myrtle Street from the eastern end of Byangum Road at the roundabout.*

4. *Similarly, due to very acute angle of the intersection when turning left, left turns from Byangum Road into Myrtle Street should be ceased.*
5. *Making these changes will also improve the safety of the many children who walk to school along Myrtle Street and particularly this dangerous section."*

There is sufficient sight distance for vehicles to turn safely from Byangum Road into Myrtle Street and the traffic volumes on Myrtle Street and those turning left into Myrtle Street from Byangum Road are very low.

The limited sight distance in Myrtle Street results in low traffic speeds and introducing parking restrictions may lead to increases in speed.

COMMITTEE ADVICE:

That the Myrtle Street, Murwillumbah agenda item be deferred to the next Local Traffic Committee meeting to be held on 8 September 2016.

GENERAL TRAFFIC ADVICE - TWEED HEADS

B2 [LTC] Frances Street and Endeavour Parade, Tweed Heads

ORIGIN:
Roads & Stormwater

FILE NO: ECM 4158745; ECM 4165297; Traffic - Committee; Transport - Bus Services - Routes; Signs - Traffic Issues; Endeavour Parade; Frances Street

SUMMARY OF REPORT:

Residents have requested that the existing bus prohibitive signage at night on Endeavour Parade be extended to include during the day.

COMMITTEE ADVICE:

That extending the bus prohibitive signage on Endeavour Parade, Tweed Heads is not supported as prohibiting buses on individual streets would set a precedent for amenity issues.

B3 [LTC] Speed Zone on Coronation Avenue, Pottsville

ORIGIN:
Roads & Stormwater

FILE NO: ECM 4162863; Traffic - Committee; Traffic - Speed Zones; Koala Management; Fauna Protection; Coronation Avenue

SUMMARY OF REPORT:

Request received to extend the 40km/h speed zone on Coronation Avenue, Pottsville to the first roundabout at the intersection of Seabreeze Boulevard.

"The 40km/h speed limit will assist in protecting threatened koalas and other wildlife using a critical koala corridor each side of Coronation Ave and provide a safer road environment for many pedestrians and cyclists using this section of road."

The existing 40km/h high pedestrian activity zone was installed a number of years ago under a grant from Roads & Maritime Services (RMS). Extending the zone would need assessment from the RMS on whether it conforms with its guidelines for such zones.

The Committee noted that a component of the currently under construction slow point on Coronation Avenue east of Seabreeze Boulevard will include pavement stencils advising motorists of the presence of koalas.

COMMITTEE ADVICE:

That the Roads and Maritime Services be requested to perform a speed zone review on Coronation Avenue, Pottsville.

B4 [LTC] Banks Avenue, Tweed Heads

ORIGIN:
Roads & Stormwater

FILE NO: ECM 4159474; Traffic - Committee; Traffic - Parking Zones; Banks Avenue

SUMMARY OF REPORT:

Request received to change Banks Avenue into a one way street or only permit parking on one side of the street. A resident has advised that cars are being parked on both sides of the street causing a narrow space in the middle of the road for vehicles to travel on.

Banks Avenue carries approximately 300 vehicles per day and drivers need to slow down to ensure safe passing manoeuvres. Limiting parking would lead to increased speeds and designated as one way may lead to non-compliance in a residential street and introduce new potential hazards.

COMMITTEE ADVICE:

That the request to convert Banks Avenue, Tweed Heads into a one way street and to limit parking to one side of the road is not supported due to potential unwanted consequences such as speeding, non compliance and shifting parking demand to other residential areas.

B5 [LTC] School Zone - Westray Avenue, Banora Point

ORIGIN:
Roads & Stormwater

FILE NO: ECM 4093245; Traffic; Traffic Committee; Traffic - School Zones; Westray Avenue Banora Point.

SUMMARY OF REPORT:

Request has been received for the extension of the "School Zone" within the vicinity of Banora Point Primary School on Westray Avenue.

There is no direct access to the school from Westray Avenue. There is considered to be limited benefit from extending the existing school speed zone and Westray Avenue is short in length and would not carry significant numbers of through traffic.

The Committee did not support the extension of the school zone however the RMS representative requested that the request be forwarded to them for assessment.

COMMITTEE ADVICE:

That the extension of the school zone on Westray Avenue, Banora Point be forwarded to the RMS for review.

B6 [LTC - LATE] Keith Compton Drive, Tweed Heads

FILE NO: ECM 4096280; 4105532; 4015537; Traffic - Committee; Traffic - Parking Zones; Traffic - Linemarking; Parks - Uniacke Park; Keith Compton Drive, Tweed Heads

SUMMARY OF REPORT:

The Committee discussed the request to install prohibitive parking on Keith Compton Drive to allow maintenance access to the park.

It was noted that there is no formed driveway or vehicle crossover from Keith Compton Drive and that signage may not be the most appropriate solution.

COMMITTEE ADVICE:

That Council installs a formed driveway to Uniacke Park and appropriate signage outside the road reserve advising motorists to keep the driveway clear.

NEXT MEETING:

The next meeting of the Local Traffic Committee will be held 8 September 2016 in the Mt Warning Meeting Room commencing at 9.30am.

There being no further business the Meeting terminated at 10.50am.

SECTION A - FORMAL ITEMS SECTION - DELEGATIONS FOR REGULATORY DEVICES FOR ENDORSEMENT BY COUNCIL:

A. FORMAL ITEMS SECTION

DELEGATIONS FOR REGULATORY DEVICES - MURWILLUMBAH

A1 [LTC] Nullum Street, Murwillumbah

That:

- 1. The “no stopping” zone on the western side of Nullum Street, Murwillumbah adjacent to Sathya Sai Primary School be increased to 9m from the crossing.*
- 2. The Police be requested to enforce the speed limit during school zone hours on Nullum Street, Murwillumbah.*

A2 [LTC] Buchanan Street, South Murwillumbah

That a “No Stopping” zone be installed on the western side of Buchanan Street from Tweed Valley Way to 15 metres south of the petrol station's driveway.

A3 [LTC] Wharf Street, Murwillumbah

That the existing loading zone on Wharf Street, Murwillumbah adjacent to Ju Ju's Café be converted to a two hour parking in business hours 9.00am to 5.00pm Monday to Friday and 9.00am to 12.00pm Saturday zone.

A4 [LTC] Tweed's Biggest Dinner Party - Murwillumbah and Wharf Streets, Murwillumbah

There are no objections to the temporary closure of Murwillumbah Street and Wharf Street, Murwillumbah for the conduct of the Tweed's Biggest Dinner Party on 3 December 2016, subject to the following conditions:

- 1. Conformance with a Traffic Management Plan and associated Traffic Control Plans implemented and controlled by Roads & Maritime Services accredited persons.*
- 2. Community and affected business consultation addressing raised concerns including a letterbox drop to directly affected residents.*
- 3. The event organiser notifies Tweed residents of the impact of their event by advertising in the Tweed Link at their expense a minimum of one week prior to the operational impacts taking effect. The advertising must include the event name, specifics of any traffic impacts or road closures and times, alternative route arrangements, event organiser, a personal contact name and a telephone number for all event related enquiries or complaints.*
- 4. Consultation with bus and taxi operators and arrangements made for provision of services during conduct of the event.*
- 5. Adequate public liability insurance being held by the event organiser.*

6. *All signage erected for the event to not cause a hazard for motorists or pedestrians and be removed immediately following the completion of the event.*
7. *Consultation with emergency services and any identified issues addressed.*
8. *Arrangements made for private property access and egress affected by the event.*
9. *That the applicant organise for the event to be listed on Council's Calendar of Events web page. Go to www.tweed.nsw.gov.au Our Community/Festivals Events and Filming/Calendar of Events and access the Calendar of Events site to upload the event details.*
10. *The submission and approval of a Community Event application/Major Event application and compliance with any conditions imposed therein.*

A5 [LTC] Alma Street and Tweed Valley Way, South Murwillumbah

That the designation of a B-Double route on Tweed Valley Way from Buchanan Street to Alma Street, South Murwillumbah is not supported.

DELEGATIONS FOR REGULATORY DEVICES - TWEED HEADS

A6 [LTC] Sunshine Avenue, Tweed Heads South

That the existing "No Parking / No Stopping" sign on Sunshine Avenue, Tweed Heads South which is located approximately ten metres north of the driveway entrance to Lindisfarne Anglican Grammar School be relocated south ten metres to the driveway entrance.

A7 [LTC] Oxford Street, Kingscliff

That the end 45 degree angle parking space on Oxford Street, Kingscliff closest to Kingscliff High School be converted to motorcycle parking as per AS2890.5.

A8 [LTC] Loading Zone on Coronation Avenue, Pottsville

That the two loading zones on Coronation Avenue, Pottsville near the butchers shop be made into one loading zone and that it be signposted "Loading Zone 7.00am to 9.00am Monday to Friday".

COUNCIL IMPLICATIONS:

a. Policy:

Code of Meeting Practice.

b. Budget/Long Term Financial Plan:

Not applicable.

c. Legal:

Not Applicable.

d. Communication/Engagement:
Inform - We will keep you informed.

UNDER SEPARATE COVER/FURTHER INFORMATION:

Nil.

CONFIDENTIAL ITEMS FOR CONSIDERATION

REPORTS THROUGH THE GENERAL MANAGER IN COMMITTEE

REPORTS FROM THE GENERAL MANAGER IN COMMITTEE

C1 [GM-CM] Murwillumbah Railway Station

REASON FOR CONFIDENTIALITY:

This report relates to possible commercial dealings that should not be disclosed.

Local Government Act

This report is **CONFIDENTIAL** in accordance with Section 10A(2) of the Local Government Act 1993, which permits the meeting to be closed to the public for business relating to the following: -

- (c) information that would, if disclosed, confer a commercial advantage on a person with whom the council is conducting (or proposes to conduct) business.

Validms



Strengthening the Economy

LINKAGE TO INTEGRATED PLANNING AND REPORTING FRAMEWORK:

- 3 Strengthening the Economy
 - 3.1 Expand employment, tourism and education opportunities
-
-

REPORTS FROM THE DIRECTOR ENGINEERING IN COMMITTEE

C2 [E-CM] Assignment of Licence Agreement over Road Reserve - Wharf Street, Tweed Heads

REASON FOR CONFIDENTIALITY:

This report relates to commercial negotiations between Council and the proposed Licensee as well as the commercial transactions of the proposed Assignee (Elanor) and Licensee (Tweed Mall).

Local Government Act

This report is **CONFIDENTIAL** in accordance with Section 10A(2) of the Local Government Act 1993, which permits the meeting to be closed to the public for business relating to the following: -

- (d) commercial information of a confidential nature that would, if disclosed:
 - (i) prejudice the commercial position of the person who supplied it, or
 - (ii) confer a commercial advantage on a competitor of the council, or
 - (iii) reveal a trade secret.

Validms



Supporting Community Life

LINKAGE TO INTEGRATED PLANNING AND REPORTING FRAMEWORK:

- 2 Supporting Community Life
 - 2.4 An integrated transport system that services local and regional needs
 - 2.4.3 Ensure local streets, footpaths and cycleways are provided, interconnected and maintained
-
-

C3 [E-CM] Clarrie Hall Dam - Land Acquisition - 141 Lone Pine Road, Doon Doon

REASON FOR CONFIDENTIALITY:

This reports discusses commercial discussions and private financial arrangements which should not be disclosed to the public in order to protect the privacy of the affected individuals.

Local Government Act

This report is **CONFIDENTIAL** in accordance with Section 10A(2) of the Local Government Act 1993, which permits the meeting to be closed to the public for business relating to the following: -

- (c) information that would, if disclosed, confer a commercial advantage on a person with whom the council is conducting (or proposes to conduct) business.

Validms



Supporting Community Life

LINKAGE TO INTEGRATED PLANNING AND REPORTING FRAMEWORK:

- 2 Supporting Community Life
 - 2.3 Provide well serviced neighbourhoods
 - 2.3.1 Advocate for the provision of affordable and accessible health care, aged care, mental health, youth and family services and other community services
-
-

THIS PAGE IS BLANK