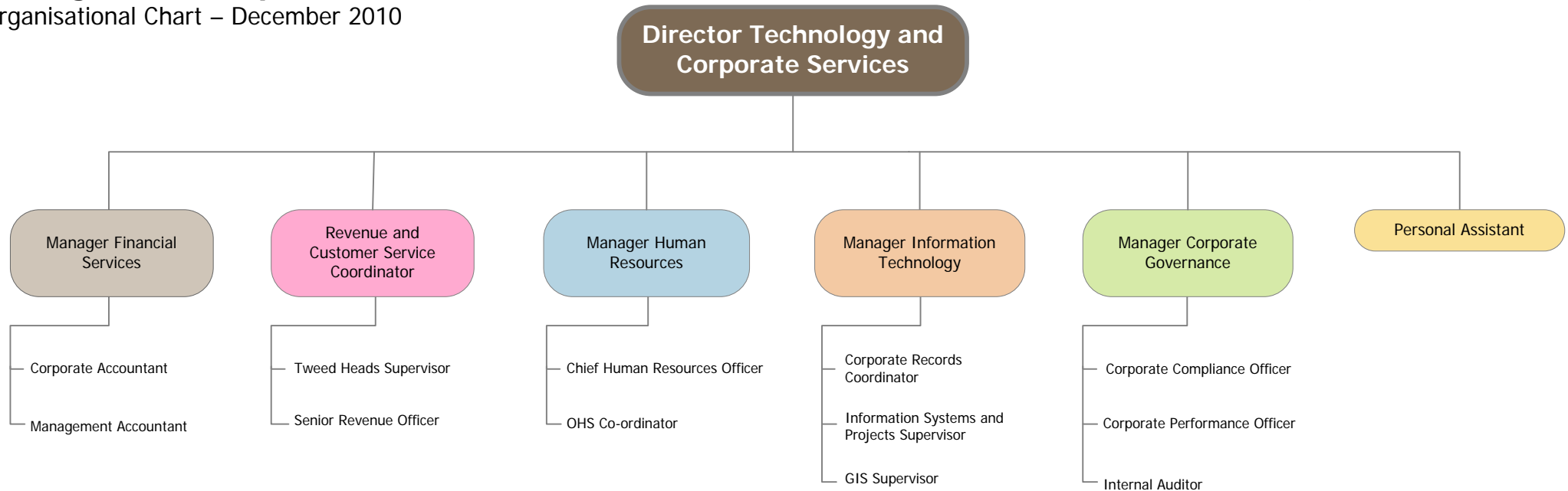


# Technology and Corporate Services Managers and Supervisors

Organisational Chart – December 2010



Total Staff - 77

**Financial Services**

14 Staff

- Budgeting
- Payroll
- Accounts Payable
- Long-term Financial Planning
- Costing – Store/Plant
- Statutory Financial Reporting
- Taxation
- Grants
- Assets
- Management Accounting
- Investments

**Revenue**

18 Staff

- Rating
- Water Accounts
- Valuations
- Customer Service
- Cashiering
- Tweed Heads Office
- Debt Collection
- Pensioner Claims
- Property Information

**Human Resources and OHS**

11 Staff

- OHS
- Recruitment
- Industrial Relations
- Employee Relations
- Staff Training
- Career Development
- Performance Management
- Administration Support

**Information and Technology**

27 Staff

- Core Business Systems
- Network and Data Security
- Hardware and Software
- Help Desk
- Internet/Intranet
- Computer Systems Administration
- Business Process Improvement/Analysis
- Project Management
- Record Management
- GIS

**Corporate Governance**

7 Staff

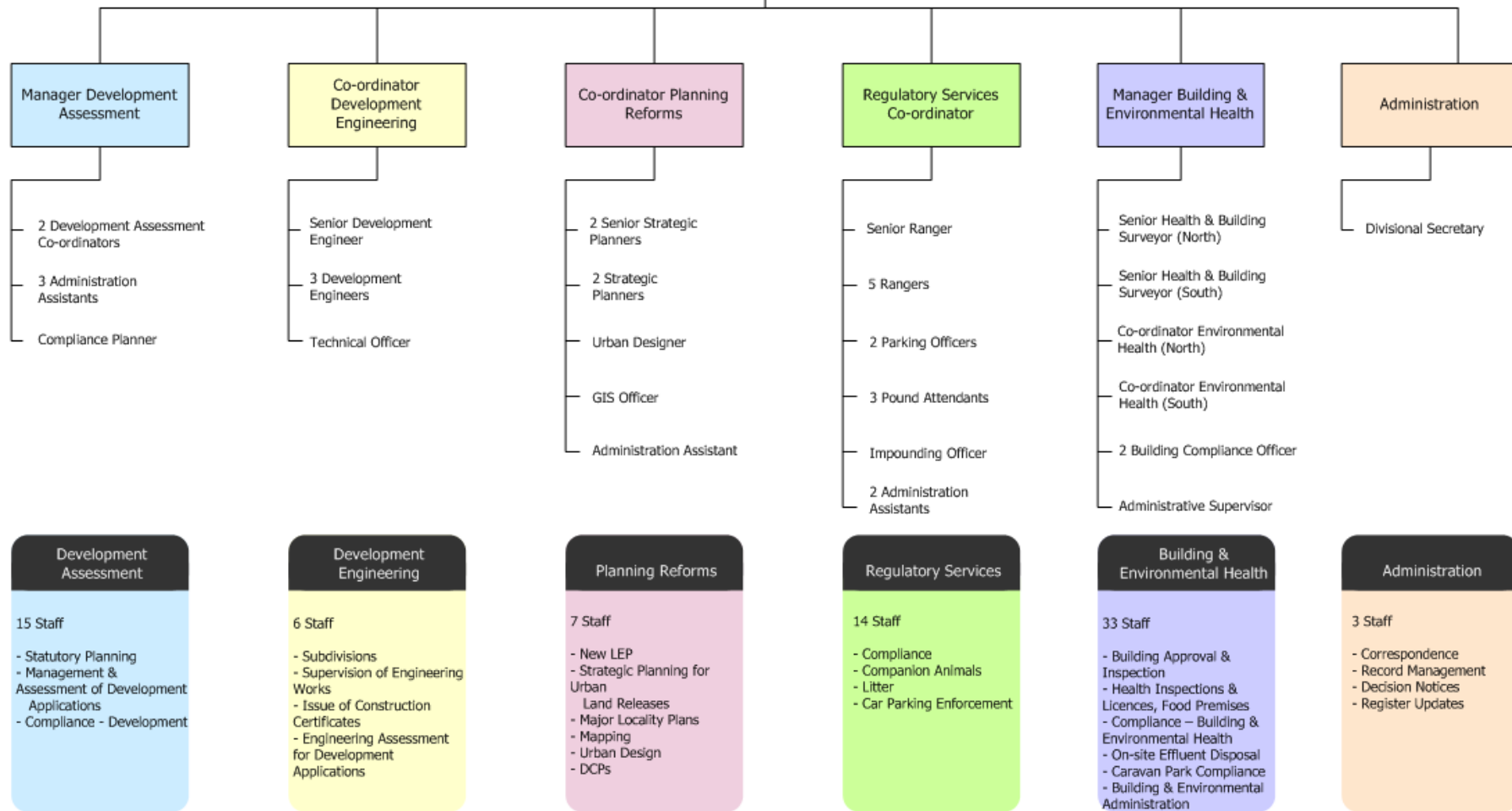
- Governance
- Internal Audit
- Management Plan
- Corporate Performance
- Access to Information
- Risk Management

# Planning & Regulation Managers & Supervisors

Organisational Chart – September 2012

Total Staff - 78

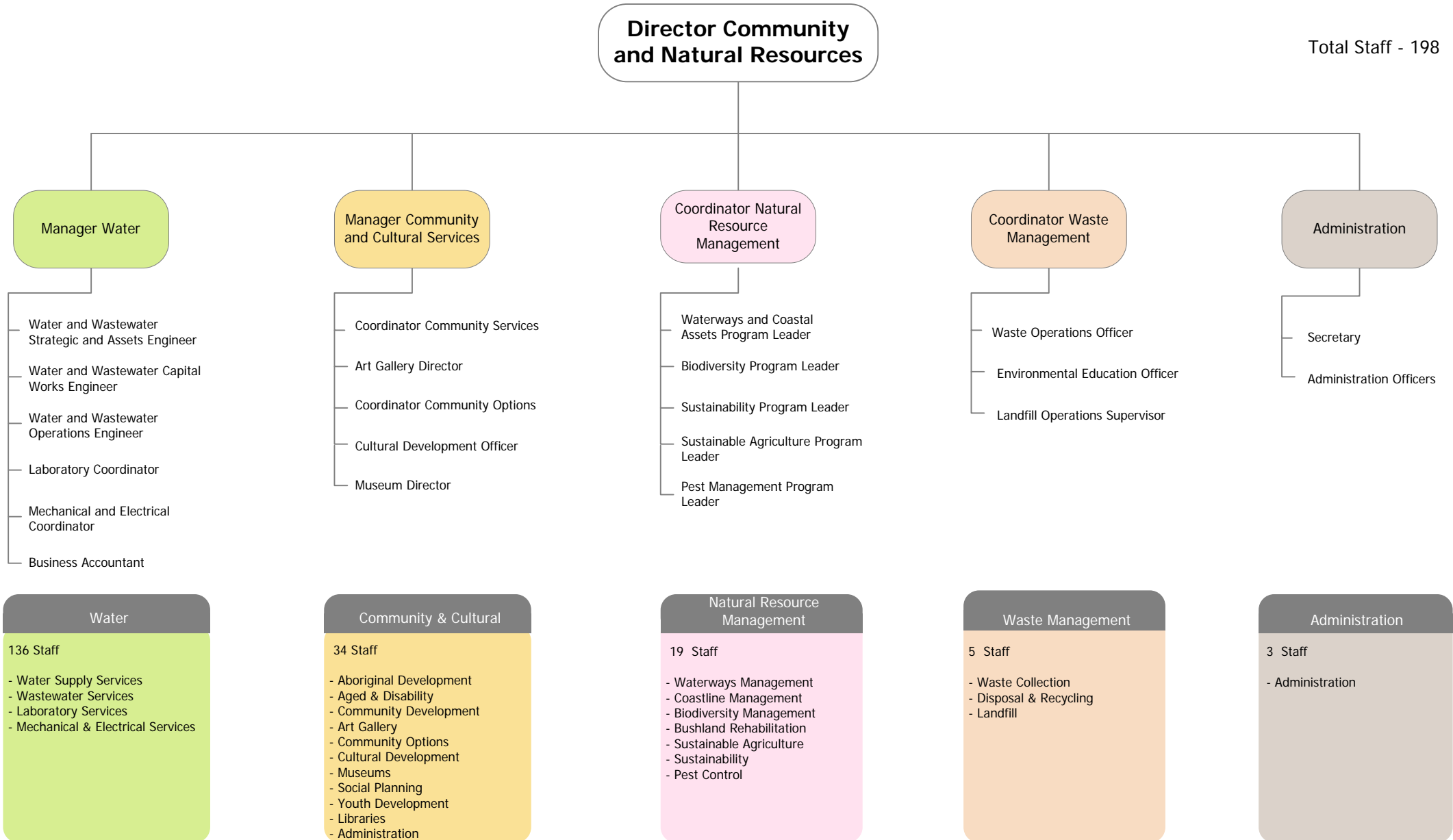
## Director Planning & Regulation



# Community and Natural Resources Managers and Supervisors

Organisational Chart – March 2012

Total Staff - 198



**Water**

136 Staff

- Water Supply Services
- Wastewater Services
- Laboratory Services
- Mechanical & Electrical Services

**Community & Cultural**

34 Staff

- Aboriginal Development
- Aged & Disability
- Community Development
- Art Gallery
- Community Options
- Cultural Development
- Museums
- Social Planning
- Youth Development
- Libraries
- Administration

**Natural Resource Management**

19 Staff

- Waterways Management
- Coastline Management
- Biodiversity Management
- Bushland Rehabilitation
- Sustainable Agriculture
- Sustainability
- Pest Control

**Waste Management**

5 Staff

- Waste Collection
- Disposal & Recycling
- Landfill

**Administration**

3 Staff

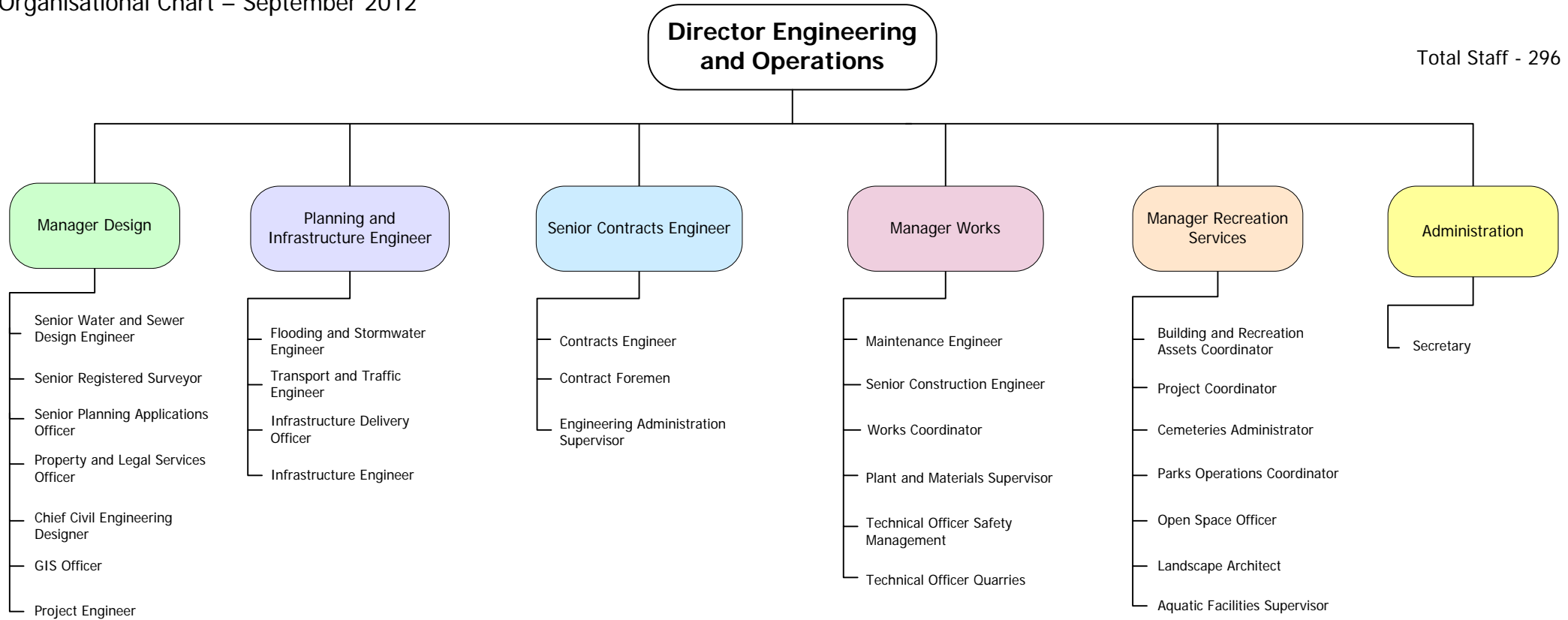
- Administration

# Engineering and Operations Managers and Supervisors

Organisational Chart – September 2012



Total Staff - 296



**Design**

26 Staff

- Design of Works Projects
- Planning Applications for Works Projects
- Environmental Assessment of Works
- Surveying
- Property and Legal Matters
- Manage Design Consultants
- Project Management

**Planning and Infrastructure**

8 Staff

- Infrastructure Planning
- Developer Contribution Plans
- Traffic, Parking Management
- Floodplain Management & Mitigation
- Stormwater Policy and Approvals, Driveway Approvals
- Special Projects
- Road Safety
- Street Lighting
- Related DA Assessment

**Contracts**

12 Staff

- Contract and Tender Administration, Supervision and Claims
- Advice on Contracts
- Tender and Contract Documentation
- Contract Policy and Procedures

**Works**

165 Staff

- Road, Bridge, Cycleway and Footpath Network
- Stormwater Drainage
- Construction and Maintenance Works
- Vehicle and Plant Fleet
- Works Depots, Store and Mechanical Workshop
- Quarries
- RTA Grants and Works

**Recreation**

80 Staff

- Parks
- Sportsfields
- Swimming Pools
- Building Maintenance
- Public Toilets
- Landscape Design
- Surf Life Saving
- Cemeteries
- Related DA Assessment

**Administration**

5 Staff