



Civic and Cultural Centre
 PO Box 816
 Murwillumbah, NSW 2484
 Telephone: (02) 6670 2420
 Facsimile: (02) 6670 2429
 Email: gis@tweed.nsw.gov.au
 Website: www.tweed.nsw.gov.au

**Tumbulgum
 Riverside Drive**

Tenure: Road Reserve
 Potential Pay Parking Area



Disclaimer
 While every care is taken to ensure the accuracy of this data, Tweed Shire Council makes no representations or warranties expressed or implied, statutory or otherwise, about its accuracy, reliability, completeness or suitability for any particular purpose and disclaim all responsibility and all liability (including without limitation, liability and negligence) for all expenses, losses, damages (including indirect or consequential damage) and cost which may be incurred as a result of data being inaccurate in any way and for any reason. This information is supplied for the general guidance and is to be considered indicative and diagrammatic only. It should not be used for any survey or construction purpose and prior to any excavations a "Dial Before You Dig" enquiry must be made by calling 1100.
 The information contained on this document remains valid for 30 days only from the date of supply.

Scale: 1:1250

Issue Date: 28/8/2012





Civic and Cultural Centre
 PO Box 816
 Murwillumbah, NSW 2484
 Telephone: (02) 6670 2420
 Facsimile: (02) 6670 2429
 Email: gis@tweed.nsw.gov.au
 Website: www.tweed.nsw.gov.au

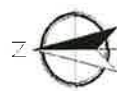
**Kennedy Drive
 Boat Ramp Car Park**

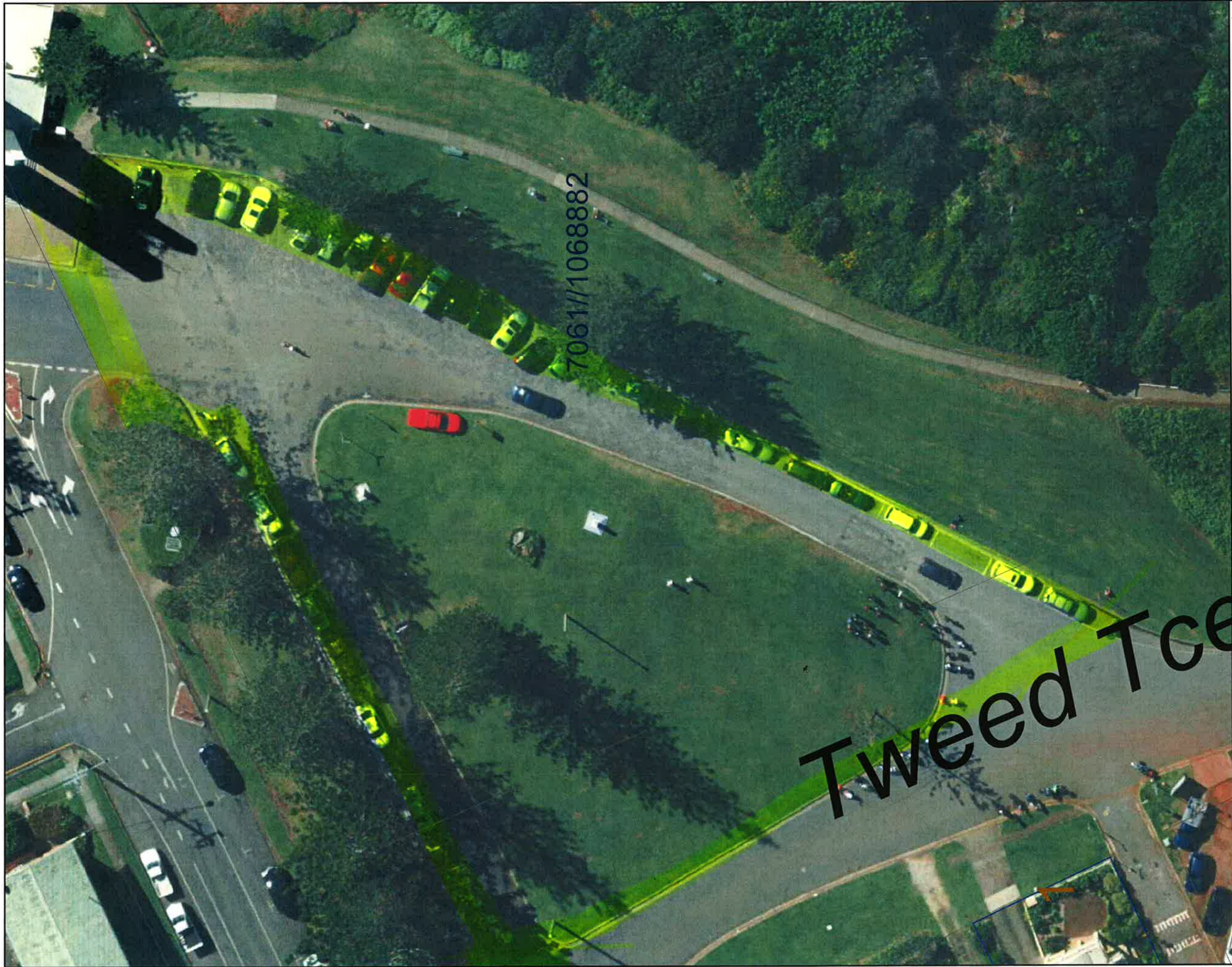
Potential Pay Parking Area

Disclaimer
 While every care is taken to ensure the accuracy of this data, Tweed Shire Council makes no representations or warranties expressed or implied, statutory or otherwise, about its accuracy, reliability, completeness or suitability for any particular purpose and disclaims all responsibility and all liability (including without limitation, liability and negligence) for all expenses, losses, damages (including indirect or consequential damage) and cost which may be incurred as a result of data being inaccurate in any way and for any reason. This information is supplied for the general guidance and is to be considered indicative and diagrammatic only. It should not be used for any survey or construction purpose and prior to any excavations a "Dial Before You Dig" enquiry must be made by calling 1100.
 The information contained on this document remains valid for 30 days only from the date of supply.

Scale: 1:300

Issue Date: 29/8/2012





TWEED
 SHIRE COUNCIL
 Civic and Cultural Centre
 PO Box 816
 Murwillumbah, NSW 2484
 Telephone: (02) 6670 2420
 Facsimile: (02) 6670 2429
 Email: gis@tweed.nsw.gov.au
 Website: www.tweed.nsw.gov.au

Point Danger Tourist Area

Potential Pay Parking Area

Tenure: Council Administered
 Crown Land.
 + Road Reserve.

Scale: 1:350

Issue Date: 28/8/2012



DISCLAIMER
 While every care is taken to ensure the accuracy of this data, Tweed Shire Council makes no representations or warranties expressed or implied, statutory or otherwise, about its accuracy, reliability, completeness or suitability for any particular purpose and disclaim all responsibility and all liability (including without limitation, liability and negligence) for all expenses, losses, damages (including indirect or consequential damage) and cost which may be incurred as a result of data being inaccurate in any way and for any reason. This information is supplied for the general guidance and is to be considered indicative and diagrammatic only. It should not be used for any survey or construction purpose and prior to any excavations a 'Dial Before You Dig' enquiry must be made by calling 1100.
 The information contained on this document remains valid for 30 days only from the date of supply.



Tweed Tce

Tenure: Council Administered & Crown Land
+ Road Reserve.
Potential Pay Parking Area

**Duranbah Beach
Beach Front Parking**



TWEED
SHIRE COUNCIL

Civic and Cultural Centre
PO Box 816
Murwillumbah, NSW 2484

Telephone: (02) 6670 2420
Facsimile: (02) 6670 2429
Email: gis@tweed.nsw.gov.au
Website: www.tweed.nsw.gov.au

DISCLAIMER
While every care is taken to ensure the accuracy of this data, Tweed Shire Council makes no representations or warranties expressed or implied, statutory or otherwise, about its accuracy, reliability, completeness or suitability for any particular purpose and disclaim all responsibility and all liability (including without limitation, liability and negligence) for all expenses, losses, damages (including indirect or consequential damage) and cost which may be incurred as a result of data being inaccurate in any way and for any reason. This information is supplied for the general guidance and is to be considered indicative and diagrammatic only. It should not be used for any survey or construction purpose and prior to any excavations a 'Dial Before You Dig' enquiry must be made by calling 1100.
The information contained on this document remains valid for 30 days only from the date of supply.

Scale: 1:1000

Issue Date: 28/8/2012





Civic and Cultural Centre
 PO Box 816
 Murwillumbah, NSW 2484

Telephone: (02) 6670 2420
 Facsimile: (02) 6670 2429
 Email: gis@tweed.nsw.gov.au
 Website: www.tweed.nsw.gov.au

Kingscliff
Various Beachfront and Commercial

Potential Pay Parking Area

Scale: 1:1500

Issue Date: 29/8/2012



Disclaimer
 While every care is taken to ensure the accuracy of this data, Tweed Shire Council makes no representations or warranties expressed or implied, statutory or otherwise, about its accuracy, reliability, completeness or suitability for any particular purpose and disclaim all responsibility and all liability (including without limitation, liability and negligence) for all expenses, losses, damages (including indirect or consequential damage) and cost which may be incurred as a result of data being inaccurate in any way and for any reason. This information is supplied for the general guidance and is to be considered indicative and diagrammatic only. It should not be used for any survey or construction purpose and prior to any excavations a "Dial Before You Dig" enquiry must be made by calling 1100.
 The information contained on this document remains valid for 30 days only from the date of supply.



Palm Ave

Pandanus Pde



TWEED
SHIRE COUNCIL

Office and Cultural Centre
PO Box 816
Murwillumbah, NSW 2484

Telephone: (02) 6670 2420
Facsimile: (02) 6670 2429
Email: gis@tweed.nsw.gov.au
Website: www.tweed.nsw.gov.au

Cabarita - Pandanus Parade.

Potential Pay Parking Area

Disclaimer
While every care is taken to ensure the accuracy of this data, Tweed Shire Council makes no representations or warranties expressed or implied, statutory or otherwise, about its accuracy, reliability, completeness or suitability for any particular purpose and disclaims all responsibility and all liability (including without limitation, liability and negligence) for all expenses, losses, damages (including indirect or consequential damage) and cost which may be incurred as a result of data being inaccurate in any way and for any reason. This information is supplied for the general guidance and is to be considered indicative and diagrammatic only. It should not be used for any survey or construction purpose and prior to any excavations a "Dial Before You Dig" enquiry must be made by calling 1100.
The information contained on this document remains valid for 30 days only from the date of supply.

Scale: 1:400

Issue Date: 29/8/2012





Ovicand Cultural Centre
 PO Box 816
 Murwillumbah, NSW 2484
 Telephone: (02) 6670 2420
 Facsimile: (02) 6670 2429
 Email: gis@tweed.nsw.gov.au
 Website: www.tweed.nsw.gov.au

Potential Pay
 Parking Area

Cabarita
Norries Headland

Tenure: Road reserve to
 Council administered crown
 land.

Disclaimer

While every care is taken to ensure the accuracy of this data, Tweed Shire Council makes no representations or warranties expressed or implied, statutory or otherwise, about its accuracy, reliability, completeness or suitability for any particular purpose and disclaim all responsibility and all liability (including without limitation, liability and negligence) for all expenses, losses, damages (including indirect or consequential damage) and cost which may be incurred as a result of data being inaccurate in any way and for any reason. This information is supplied for the general guidance and is to be considered indicative and diagrammatic only. It should not be used for any survey or construction purpose and prior to any excavations a "Dial Before You Dig" enquiry must be made by calling 1100. The information contained on this document remains valid for 30 days only from the date of supply.

Scale: 1:1000

Issue Date: 28/8/2012





Civic and Cultural Centre
 PO Box 816
 Murwillumbah, NSW 2484
 Telephone: (02) 6670 2420
 Facsimile: (02) 6670 2429
 Email: gis@tweed.nsw.gov.au
 Website: www.tweed.nsw.gov.au

Fingal Boat Ramp

Potential Pay Parking Area

Disclaimer
 While every care is taken to ensure the accuracy of this data, Tweed Shire Council makes no representations or warranties expressed or implied, statutory or otherwise, about its accuracy, reliability, completeness or suitability for any particular purpose and disclaim all responsibility and all liability (including without limitation, liability and negligence) for all expenses, losses, damages (including indirect or consequential damage) and cost which may be incurred as a result of data being inaccurate in any way and for any reason. This information is supplied for the general guidance and is to be considered indicative and diagrammatic only. It should not be used for any survey or construction purpose and prior to any excavations a "Dial Before You Dig" enquiry must be made by calling 1100. The information contained on this document remains valid for 30 days only from the date of supply.

Scale: 1:500

Issue Date: 19/9/2012





Ovicand Cultural Centre
 PO Box 816
 Murwillumbah, NSW 2484
 Telephone: (02) 6670 2420
 Facsimile: (02) 6670 2429
 Email: gis@tweed.nsw.gov.au
 Website: www.tweed.nsw.gov.au

Fingal
 Surf Club



Potential Ray Parking Area

Scale: 1:500

Issue Date: 19/9/2012



USCamer
 While every care is taken to ensure the accuracy of this data, Tweed Shire Council makes no representations or warranties expressed or implied, statutory or otherwise, about its accuracy, reliability, completeness or suitability for any particular purpose and disclaim all responsibility and all liability (including without limitation, liability and negligence) for all expenses, losses, damages (including indirect or consequential damage) and cost which may be incurred as a result of data being inaccurate in any way and for any reason. This information is supplied for the general guidance and is to be considered indicative and diagrammatic only. It should not be used for any survey or construction purpose and prior to any excavations a 'Dial Before You Dig' enquiry must be made by calling 1100.
 The information contained on this document remains valid for 30 days only from the date of supply.



Civic and Cultural Centre
 PO Box 816
 Murwillumbah, NSW 2484
 Telephone: (02) 6670 2420
 Facsimile: (02) 6670 2429
 Email: gis@tweed.nsw.gov.au
 Website: www.tweed.nsw.gov.au

Chinderah

Boat Ramp



Potential Pay Parking Area.

Disclaimer

While every care is taken to ensure the accuracy of this data, Tweed Shire Council makes no representations or warranties expressed or implied, statutory or otherwise, about its accuracy, reliability, completeness or suitability for any particular purpose and disclaims all responsibility and all liability (including without limitation, liability and negligence) for all expenses, losses, damages (including indirect or consequential damage) and cost which may be incurred as a result of data being inaccurate in any way and for any reason. This information is supplied for the general guidance and is to be considered indicative and diagrammatic only. It should not be used for any survey or construction purpose and prior to any excavations a 'Dial Before You Dig' enquiry must be made by calling 1100. The information contained on this document remains valid for 30 days only from the date of supply.

Scale: 1:500

Issue Date: 19/9/2012





Civic and Cultural Centre
 PO Box 816
 Murwillumbah, NSW 2484
 Telephone: (02) 6670 2420
 Facsimile: (02) 6670 2429
 Email: gis@tweed.nsw.gov.au
 Website: www.tweed.nsw.gov.au

Salt - Central Park

Potential Pay Parking Area.

Scale: 1:1000

Issue Date: 19/9/2012



Disclaimer
 While every care is taken to ensure the accuracy of this data, Tweed Shire Council makes no representations or warranties expressed or implied, statutory or otherwise, about its accuracy, reliability, completeness or suitability for any particular purpose and disclaim all responsibility and all liability (including without limitation, liability and negligence) for all expenses, losses, damages (including indirect or consequential damage) and cost which may be incurred as a result of data being inaccurate in any way and for any reason. This information is supplied for the general guidance and is to be considered indicative and diagrammatic only. It should not be used for any survey or construction purpose and prior to any excavations a 'Dial Before You Dig' enquiry must be made by calling 1100.
 The information contained on this document remains valid for 30 days only from the date of supply.



Civic and Cultural Centre
 PO Box 816
 Murwillumbah, NSW 2484
 Telephone: (02) 6670 2420
 Facsimile: (02) 6670 2429
 Email: gis@tweed.nsw.gov.au
 Website: www.tweed.nsw.gov.au

Pottsville

Ambrose Brown Park

Potential Play Parking Area

DISCLAIMER
 While every care is taken to ensure the accuracy of this data, Tweed Shire Council makes no representations or warranties expressed or implied, statutory or otherwise, about its accuracy, reliability, completeness or suitability for any particular purpose and disclaim all responsibility and all liability (including without limitation, liability and negligence) for all expenses, losses, damages (including indirect or consequential damage) and cost which may be incurred as a result of data being inaccurate in any way and for any reason. This information is supplied for the general guidance and is to be considered indicative and diagrammatic only. It should not be used for any survey or construction purpose and prior to any excavations a "Dial Before You Dig" enquiry must be made by calling 1100.
 The information contained on this document remains valid for 30 days only from the date of supply.

Scale: 1:750

Issue Date: 19/09/2012





Civic and Cultural Centre
 PO Box 816
 Murwillumbah, NSW 2484
 Telephone: (02) 6670 2420
 Facsimile: (02) 6670 2429
 Email: gis@tweed.nsw.gov.au
 Website: www.tweed.nsw.gov.au

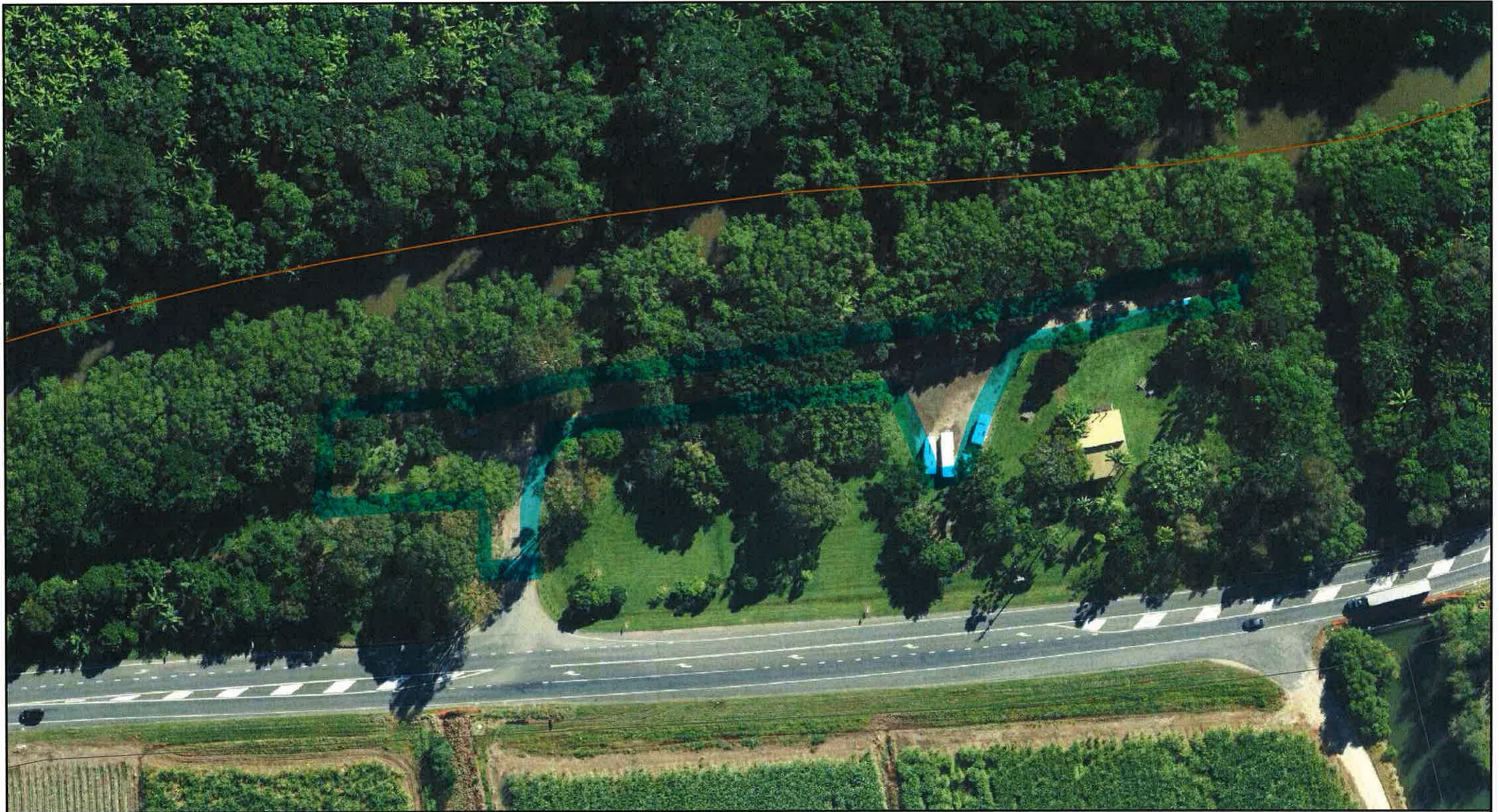
Bay Street
Tweed Heads

Scale: 1:400
 Issue Date: 11/10/2012




Disclaimer
 While every care is taken to ensure the accuracy of this data, Tweed Shire Council makes no representations or warranties expressed or implied, statutory or otherwise, about its accuracy, reliability, completeness or suitability for any particular purpose and disclaim all responsibility and all liability (including without limitation, liability and negligence) for all expenses, losses, damages (including indirect or consequential damage) and cost which may be incurred as a result of data being inaccurate in any way and for any reason. This information is supplied for the general guidance and is to be considered indicative and diagrammatic only. It should not be used for any survey or construction purpose and prior to any excavations a 'Dial Before You Dig' enquiry must be made by calling 1100.
 The information contained on this document remains valid for 30 days only from the date of supply.

Potential Pay Parking Area



Stotts Island

 Potential Pay Parking Area.

Civic and Cultural Centre
 PO Box 816
 Murwillumbah, NSW 2484

 Telephone: (02) 6670 2420
 Facsimile: (02) 6670 2429
 Email: gis@tweed.nsw.gov.au
 Website: www.tweed.nsw.gov.au



Issue Date: 5/11/2012

Scale: 1:1180



Disclaimer

While every care is taken to ensure the accuracy of this data, Tweed Shire Council makes no representations or warranties expressed or implied, statutory or otherwise, about its accuracy, reliability, completeness or suitability for any particular purpose and disclaim all responsibility and all liability (including without limitation, liability and negligence) for all expenses, losses, damages (including indirect or consequential damage) and cost which may be incurred as a result of data being inaccurate in any way and for any reason. This information is supplied for the general guidance and is to be considered indicative and diagrammatic only. It should not be used for any survey or construction purpose and prior to any excavations a "Dial Before You Dig" enquiry must be made by calling 1100.

The information contained on this document remains valid for 30 days only from the date of supply.

Hastings Point



Ovicand Cultural Centre
PO Box 816
Murwillumbah, NSW 2484
Telephone: (02) 6670 2420
Facsimile: (02) 6670 2429
Email: gis@tweed.nsw.gov.au
Website: www.tweed.nsw.gov.au

Issue Date: 5/11/2012

Scale: 1:1111



Cudgera Park



Disclaimer
While every care is taken to ensure the accuracy of this data, Tweed Shire Council makes no representations or warranties expressed or implied, statutory or otherwise, about its accuracy, reliability, completeness or suitability for any particular purpose and disclaim all responsibility and all liability (including without limitation, liability and negligence) for all expenses, losses, damages (including indirect or consequential damage) and cost which may be incurred as a result of data being inaccurate in any way and for any reason. This information is supplied for the general guidance and is to be considered indicative and diagrammatic only. It should not be used for any survey or construction purpose and prior to any excavations a "Dial Before You Dig" enquiry must be made by calling 1100.
The information contained on this document remains valid for 30 days only from the date of supply.