



TWEED
SHIRE COUNCIL

Chair: Tr Warren Polglase

Trustees: P Youngblutt (Deputy Mayor)
D Holdom
B Longland
K Milne
K Skinner
J van Lieshout

Agenda

Tweed Coast Reserve Trust Meeting Tuesday 18 May 2010

held at Murwillumbah Cultural & Civic Centre
commencing at 4.15pm

THIS PAGE IS BLANK

Items for Consideration of the Trust:

ITEM	PRECIS	PAGE
	CONFIRMATION OF MINUTES	5
1	Minutes of the Ordinary Tweed Coast Reserve Trust Meeting held Thursday 28 May 2009	5
	REPORTS THROUGH THE EXECUTIVE MANAGER OF THE TRUST/GENERAL MANAGER	7
	REPORTS FROM DIRECTOR ENGINEERING AND OPERATIONS	7
2	[EO-TCRT] Proposed Addition of Roads and Authority Land to Crown Reserve 1001008 for Public Recreation and Coastal Protection at Chinderah - Lot 13 in DP 830655 and Lots 20, 21 and 22 in DP 833570	7

THIS PAGE IS BLANK

CONFIRMATION OF MINUTES

- 1 **Minutes of the Ordinary Tweed Coast Reserve Trust Meeting held Thursday 28 May 2009**

UNDER SEPARATE COVER/FURTHER INFORMATION:

*To view any "**non confidential**" attachments listed below, access the meetings link on Council's website www.tweed.nsw.gov.au or visit Council's offices at Tweed Heads or Murwillumbah (from Friday the week before the meeting) or Council's libraries (from Monday the week of the meeting).*

1. Minutes of the Ordinary Tweed Coast Reserve Trust Meeting held Thursday 28 May 2009 (ECM 2062333).
-

THIS PAGE IS BLANK

REPORTS THROUGH THE EXECUTIVE MANAGER OF THE TRUST/GENERAL MANAGER

REPORTS FROM DIRECTOR ENGINEERING AND OPERATIONS

- 2 [EO-TCRT] Proposed Addition of Roads and Authority Land to Crown Reserve 1001008 for Public Recreation and Coastal Protection at Chinderah - Lot 13 in DP 830655 and Lots 20, 21 and 22 in DP 833570**

ORIGIN:

Design

FILE NO: GP1/16/Pt 2 and PF4030/2440

SUMMARY OF REPORT:

When the Chinderah Bypass was approved in 1992, the Roads and Traffic Authority (RTA) was required, under consent condition 4, to acquire land for compensatory wetland as the Chinderah Bypass was partially constructed over SEPP 14 wetlands.

Land was purchased and managed pursuant to a Plan of Management by the RTA. The RTA have had discussions with the Land and Property Management Authority (LMPA) to transfer the land to form part of Crown Reserve 1001008. After negotiating funds from both the RTA and the Authority for the management of weeds on the land, as well as the construction of an access track and locked gate, Council now recommends that the Tweed Coast Reserve Trust make no objection to the addition of the subject parcels to Crown Reserve 1001008.

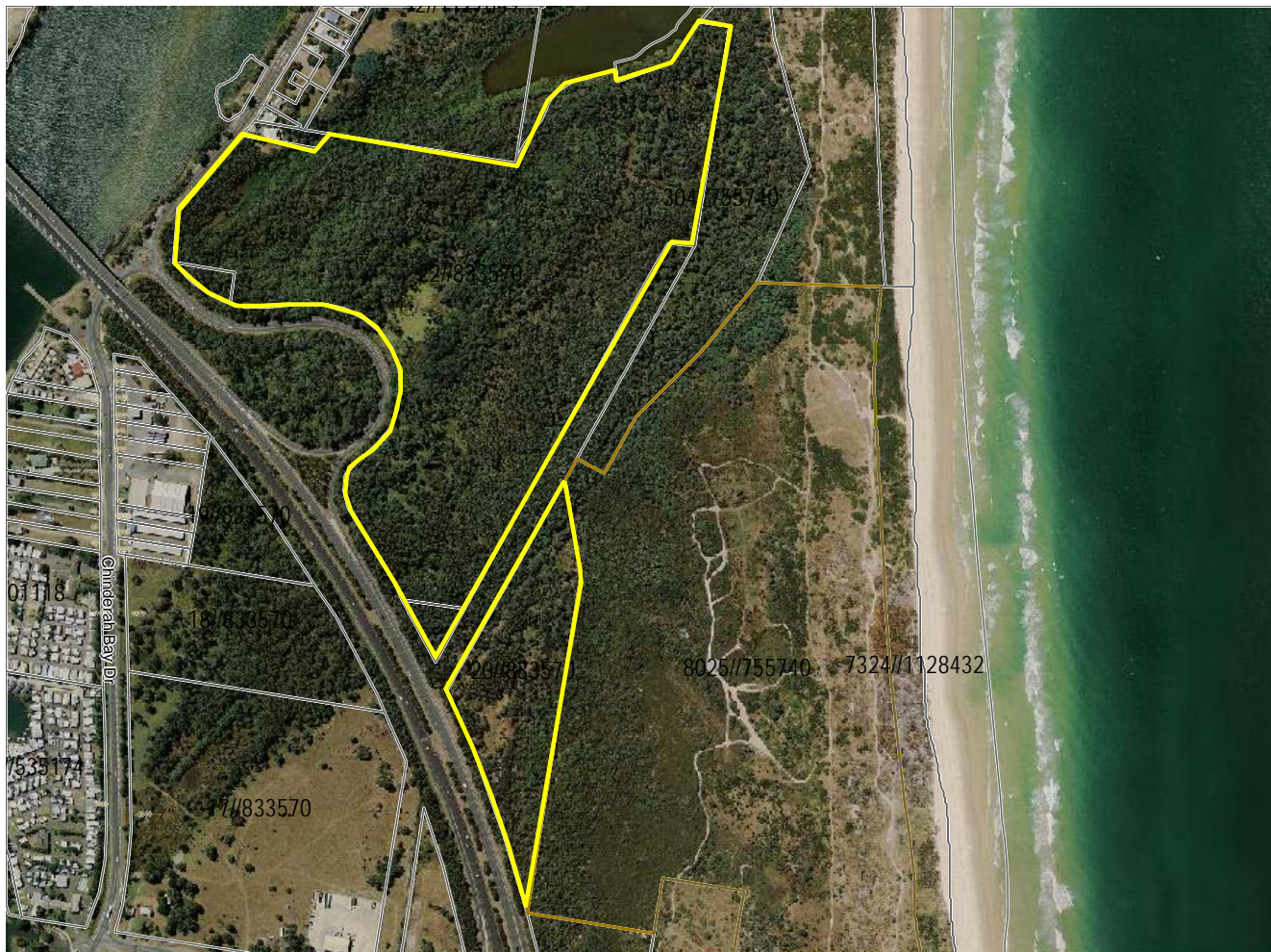
RECOMMENDATION:

That the Tweed Coast Reserve Trust advises the Land and Property Management Authority that the Trust has no objections to the transfer of Lot 13 in DP 830655, Lots 20, 21 and 22 in DP 833570 to Crown Reserve 1001008 for Public Recreation and Coastal Protection.

REPORT:

When the Chinderah Bypass was approved in 1992, the RTA was required, under consent condition 4, to acquire land for compensatory wetland as the Chinderah Bypass was partially constructed over State Environmental Planning Policy (SEPP) 14 wetlands.

The land acquired is shown outlined in the aerial photo below:



The RTA have been corresponding with the Land and Property Management Authority over several years to transfer these parcels as they are of the view that they have complied with their consent conditions and no longer wish to retain ownership.

The Authority has sought the Trust's response to the transfer, and following an on site inspection and a review of the Plan of Management of the land, Council requested funds to pursue weed management and access for bush fire purposes. Funds have been negotiated from both the RTA and the Authority for these purposes.

The (RTA) will provide \$8,200 and the (LPMA) to provide the sum of \$5,000.

It is recommended that the Tweed Coast Reserve Trust resolves to advise the Land and Property Management Authority that the Trust makes no objection to the transfer of the subject parcels to be added to Crown Reserve 1001008 for Public Recreation and Coastal Environmental Protection, where Council is the Trustee of the reserve.

LEGAL/RESOURCE/FINANCIAL IMPLICATIONS:

Nil.

POLICY IMPLICATIONS:

Nil.

UNDER SEPARATE COVER/FURTHER INFORMATION:

To view any "**non confidential**" attachments listed below, access the meetings link on Council's website www.tweed.nsw.gov.au (from 8.00pm Wednesday the week before the meeting) or visit Council's offices at Tweed Heads or Murwillumbah (from 8.00am Thursday the week before the meeting) or Council's libraries (from 10.00am Thursday the week of the meeting).

Nil.

THIS PAGE IS BLANK