

Strata Plan SP35133

Box:e-IDS /Doc:SP 0035133 P /Rev:06-Apr-2009 /Sts:OK,OK /Prt:07-Apr-2009 03:12 /Pgs:ALL /Seq:1 of 3
 WARNING : Electronic Document Supplied by LPI NSW for Your Internal Use Only.

FORM 1

WARNING: CREASING OR FOLDING WILL LEAD TO REJECTION

OFFICE USE ONLY

COUNCIL'S CERTIFICATE

TWEED
 The Council of the Local Government Area of Tweed
 having satisfied itself that the requirements of the Strata Titles Act, 1973
 and the requirements of the regulations made thereunder have been
 complied with, hereby certifies that the following plan has been
 approved in accordance with the provisions of section 38 of the
 Act and the regulations.

Date: 15/12/89
 Submission No.: 15/189
 Approved by: [Signature]

STRATA CORPUS CERTIFICATE

L. BASIL JOHN MC LAUCHLAN
 PO BOX 710, TWEED HEADS, 2485

- (1) any walls, the entire surface for any part of which construction or maintenance is the responsibility of the strata corporation;
- (2) any walls, the entire surface for any part of which construction or maintenance is the responsibility of the strata corporation and which form a boundary of a strata lot in the strata corporation;
- (3) any walls, the entire surface for any part of which construction or maintenance is the responsibility of the strata corporation and which form a boundary of a common area in the strata corporation;
- (4) any walls, the entire surface for any part of which construction or maintenance is the responsibility of the strata corporation and which form a boundary of a common area in the strata corporation and which are situated on a building containing two or more strata lots.

(5) the survey information recorded in the accompanying location plan is accurate
 Date: 6-4-89

This is sheet 1 of my Plan in 3 sheets.

SIGNED AT SYDNEY THIS 1st DAY OF June
 1989 FOR NATIONAL AUSTRALIA BANK
 LIMITED BY ITS DEPUTY APPOINTED ATTORNEY
 UNDER POWER OF ATTORNEY NO. 110 816 3793

[Signature]
 KATHLENE MONTY
 Securities Services
 George St., Sydney
 Bank Officer

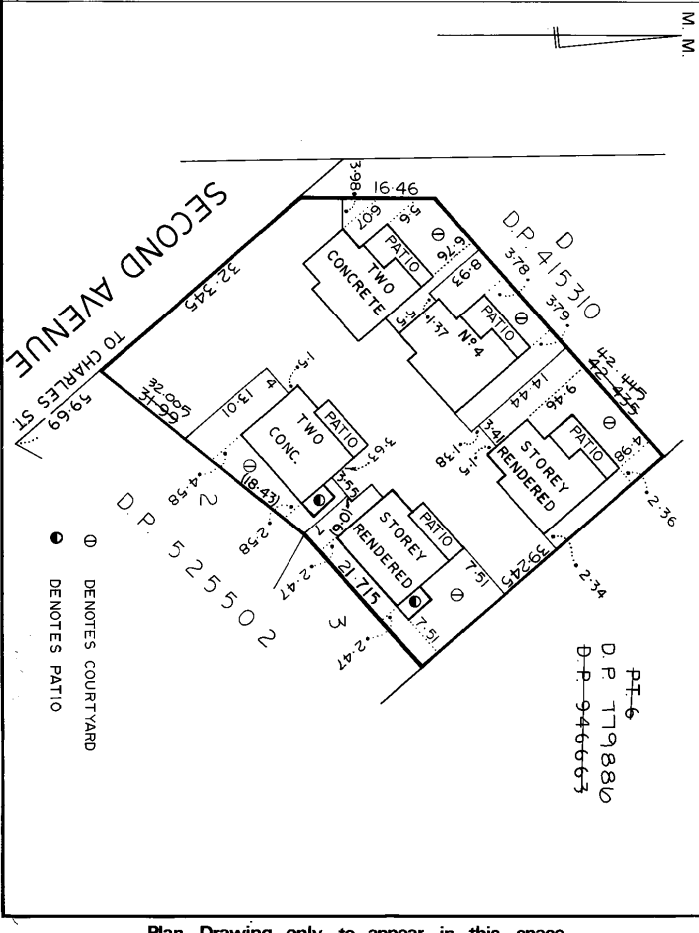
GARRY THOMAS SHARPE
 DEPUTY NATIONAL BANK SECURITIES

PLAN AMENDED IN LTO AT SURVEYORS REQUEST
 Table of mm
 SURVEYORS REFERENCE: N88/1472

PLAN OF SUBDIVISION OF LOT 1 IN
 D.P. 525502
 LOCALITY: TWEED HEADS
 PARISH: TERRANORA
 COUNTY: ROUS
 REDUCTION RATIO: 1:500

STRATA PLAN 35133
 Registered: [Signature] 21-7-1989
 C.A.: 85/89 OF 10/5/1989
 Purpose: STRATA PLAN
 Ref. Map: X44575 - 73*
 Last Plan: DP 525502

Name of, and address for service of notices on, the body corporate
 THE PROPRIETOR STRATA PLAN N° 35133
 4 SECOND AVENUE
 TWEED HEADS,
 NSW, 2485

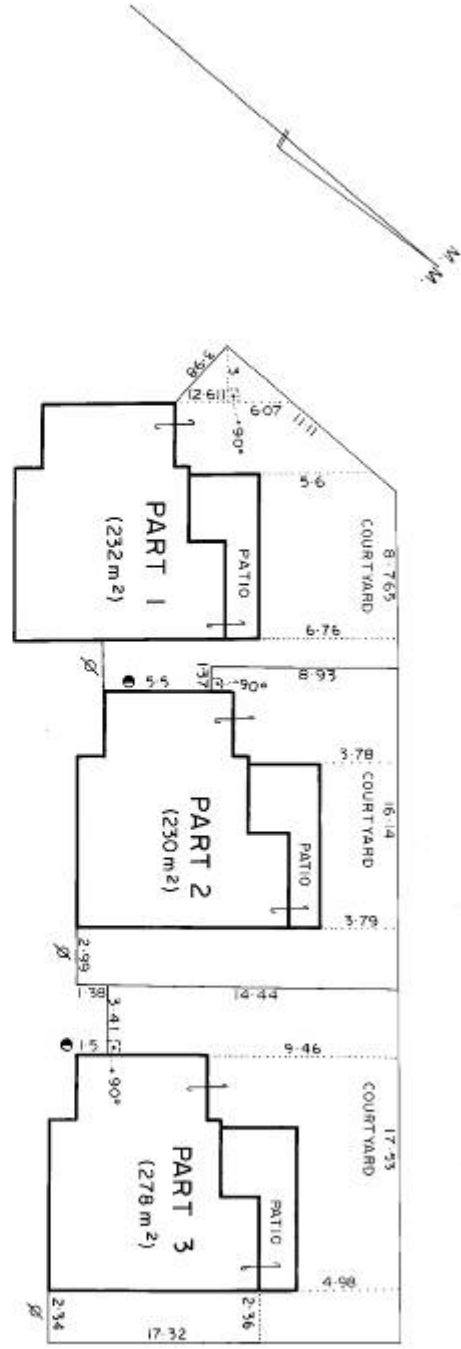


Plan Drawing only to appear in this space

Plan Drawing only to appear in this space

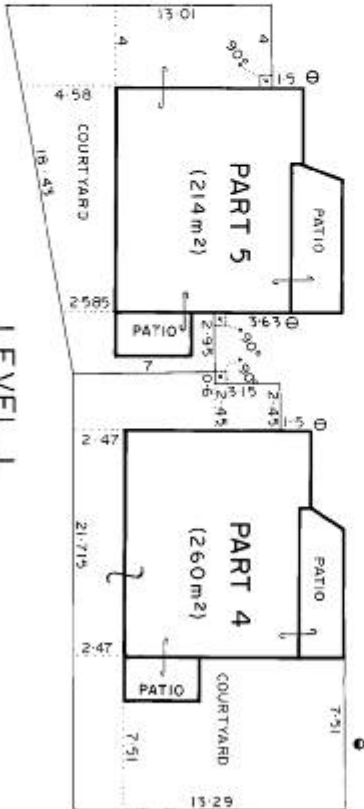
NOO5W03IN

STRATA PLAN 35133



COURTYARDS, WHERE NOT COVERED, ARE LIMITED IN HEIGHT TO 3 ABOVE AND 4 BELOW THE UPPER SURFACE LEVEL OF THE FLOOR OF THE ADJACENT PART OF EACH RESPECTIVE LOT ON LEVEL 1.

- ⊙ DENOTES FROM NORTH WESTERN FACE OF WALL
- ⊗ DENOTES PROLONGATION OF OUTER FACE OF WALL
- DENOTES PROLONGATION OF OUTER FACE OF CONCRETE PATIO
- ⦿ DENOTES FROM SOUTH EASTERN FACE OF WALL



LEVEL 1

Reduction Ratio 1:200

Lengths are in metres

Approved Drawings

W. J. Brown
 ARCHITECT



LOT 4 AMENDED IN LTO VIDE 445/B 5.9.1996

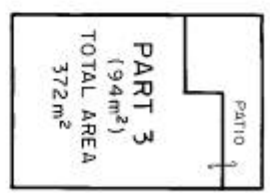
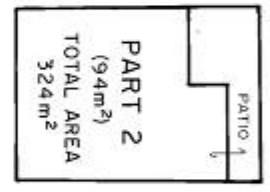
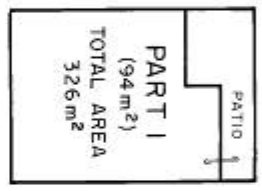
STRATA PLAN 35133

OFFICE USE ONLY

SCHEDULE OF UNIT ENTITLEMENT

LOT No.	UNIT ENTITLEMENT
1	10
2	10
3	10
4	10
5	10
AGGREGATE	50

PATIOS EXTEND TO A HEIGHT OF 2.5 ABOVE THE UPPER SURFACE OF THEIR RESPECTIVE FLOORS EXCEPT WHERE COVERED.



LEVEL 2



Reduction Ratio 1:200

Lengths are in metres

REGISTERED SURVEYOR
 SURVEYORS REFERENCE: N 88/1472

Michael J. ...



Approved Location of Car Park



Approved Location of Car Park



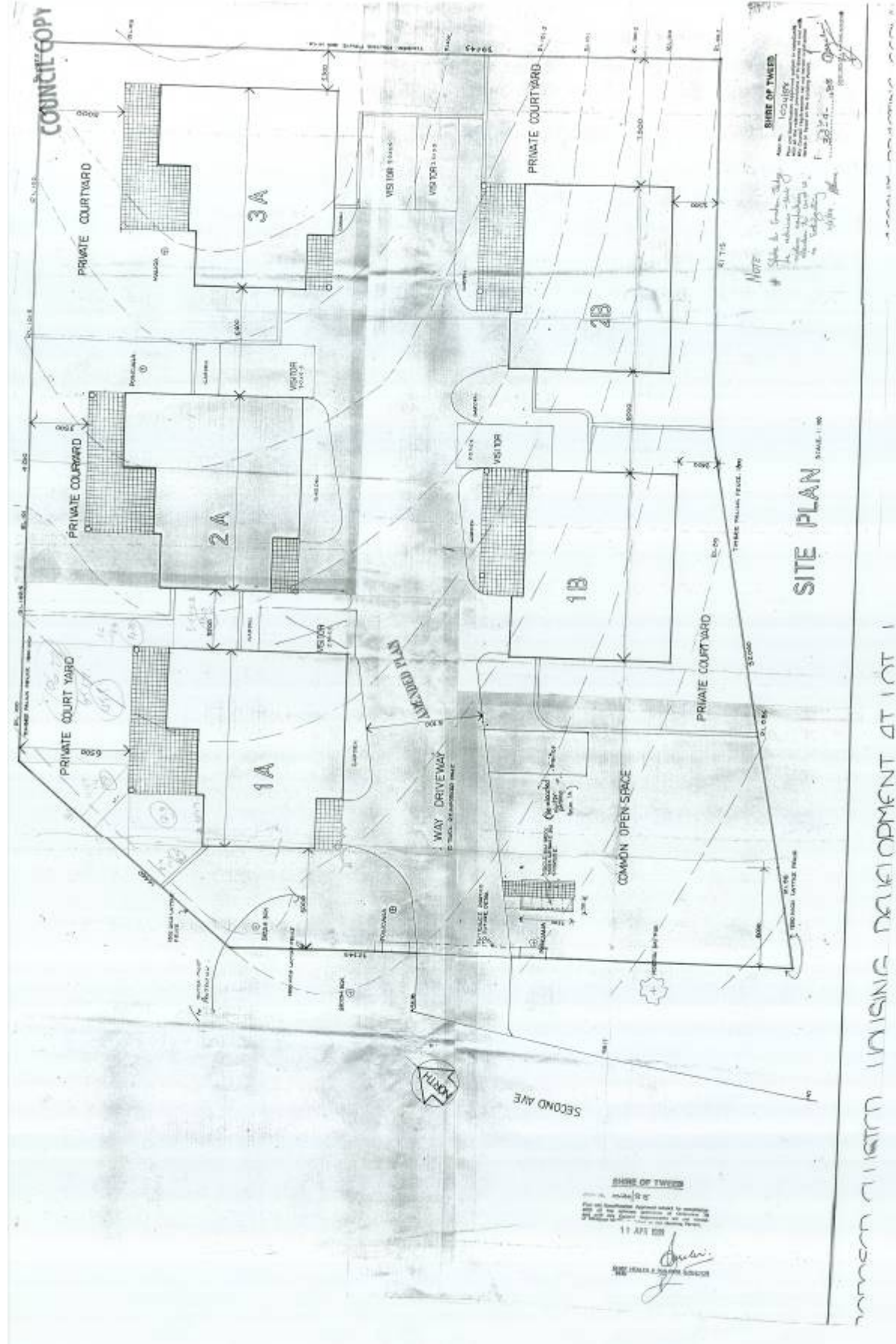
Non - Approved Location of Car Park



Change to Car Park Layout



Approved Building Plan



HOUSE PLAN USING DEVELOPMENT AT LOT 1