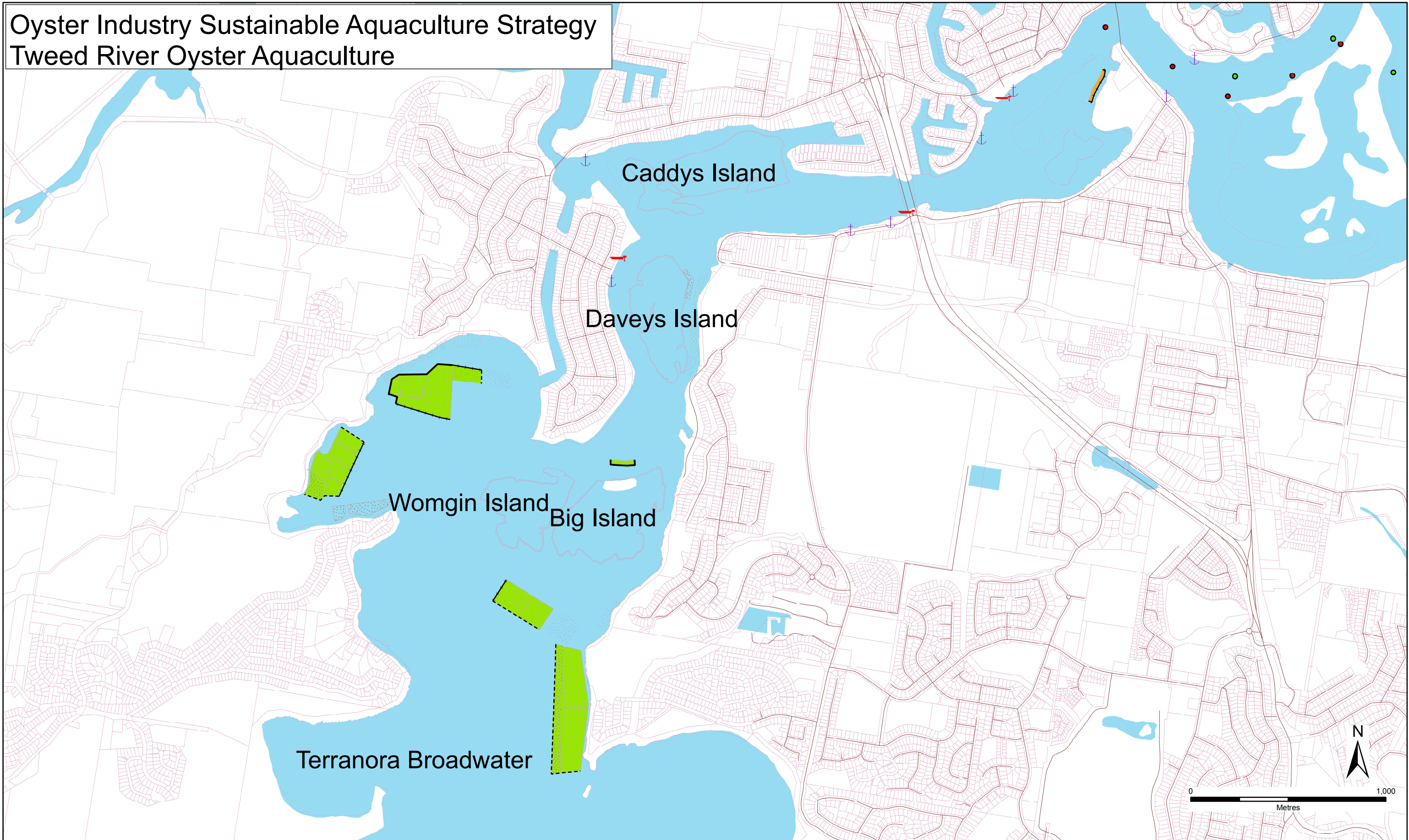


Oyster Industry Sustainable Aquaculture Strategy

Tweed River Oyster Aquaculture



Legend

- Priority oyster aquaculture areas
 - Current oyster aquaculture leases to be phased out
 - Current leased area in National Park Estate
 - Leases within Marine Park Boundaries
- Minimum Lease Marker post intervals**
- 10 metre intervals
 - 25 metre intervals
 - 50 metre intervals
 - Special navigation and marking condition
 - All other boundaries 100 metre intervals
- Former leases
 - Current leases
 - Cadastral boundaries (shorelines are indicative only)
 - Roads
- Launching ramp
 - Marina or boatshed
 - Public wharf
 - Port marker
 - Starboard marker



NSW DEPARTMENT OF
PRIMARY INDUSTRIES

August 2006

Source: data from the Department of Lands, NSW DPI, NPWS, and NSW Maritime Authority
Datum: Geocentric Datum of Australia (GDA)
GCS: Mapping Grid of Australia (MGA94)
The State of New South Wales, the Department of Primary Industries, its employees, officers, agents or servants are not responsible for the result of any actions taken on the basis of the information contained on this map, or for any errors, omissions or inaccuracies that may occur on this map.
Prepared by GIS section, Aquaculture Management Branch, Division of Agriculture & Fisheries, NSW DPI.