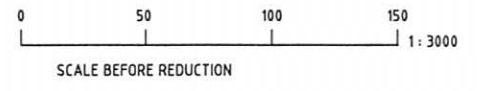


SUMMARY:-
 YIELD: - STAGE 1 TO 3 INCLUSIVE - 96 RESIDENTIAL LOTS
 INCLUDING - 7 DUPLEX LOTS (SHOWN ●)

- LEGEND**
- TWEED L.E.P. 2000 ZONE LINE
 - EXISTING PUBLIC OPEN SPACE
 - PROPOSED PUBLIC OPEN SPACE
 - PROPOSED DRAINAGE RESERVE
 - PROPOSED SEWER PUMP STATION
 - PROPOSED PEDESTRIAN PATHS
 - PROPOSED BUS ROUTE B
 - PROPOSED ENTRY ROAD E
 - TEMPORARY RIGHT OF CARRIAGEWAY IN FAVOUR OF PUBLIC R.O.W
 - FILL TO MINIMUM RL 6.0 AHD



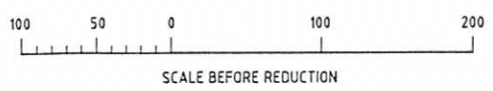
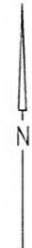
© Cardno MBK (Qld) Pty Ltd All Rights Reserved 2002.
 Copyright in the whole and every part of this drawing belongs to Cardno MBK (Qld) Pty Ltd and may not be used, sold, transferred, copied or reproduced in whole or in part in any manner or form or on any media, to any person other than by agreement with Cardno MBK (Qld) Pty Ltd.



METRICON QLD PTY. LTD.		SCALE :- 1: 3000	A1
PROPOSED RESIDENTIAL DEVELOPMENT		DATE :- MAY 2006	Rev. E
REVISED MASTERPLAN		DRAWING No.	
		7214/6/1-DA FIG 3	

XREF'S FILE NAME: G:\7214\06\SKETCH\XREF\7215060111.dwg
 CAD FILE NAME: G:\7214\06\SKETCH\72140601-DA FIG 3E.dwg

This document is produced by Cardno MBK (Qld) Pty Ltd solely for the benefit of and use by the client in accordance with the terms of the retainer. Cardno MBK (Qld) Pty Ltd does not and shall not assume any responsibility or liability whatsoever to any third party arising out of any use or reliance by third party on the content of this document.



1: 2500

© Cardno MBK (Qld) Pty Ltd All Rights Reserved 2002.
Copyright in the whole and every part of this drawing belongs to Cardno MBK (Qld) Pty Ltd and may not be used, sold, transferred, copied or reproduced in whole or in part in any manner or form or on any media, to any person other than by agreement with Cardno MBK (Qld) Pty Ltd.

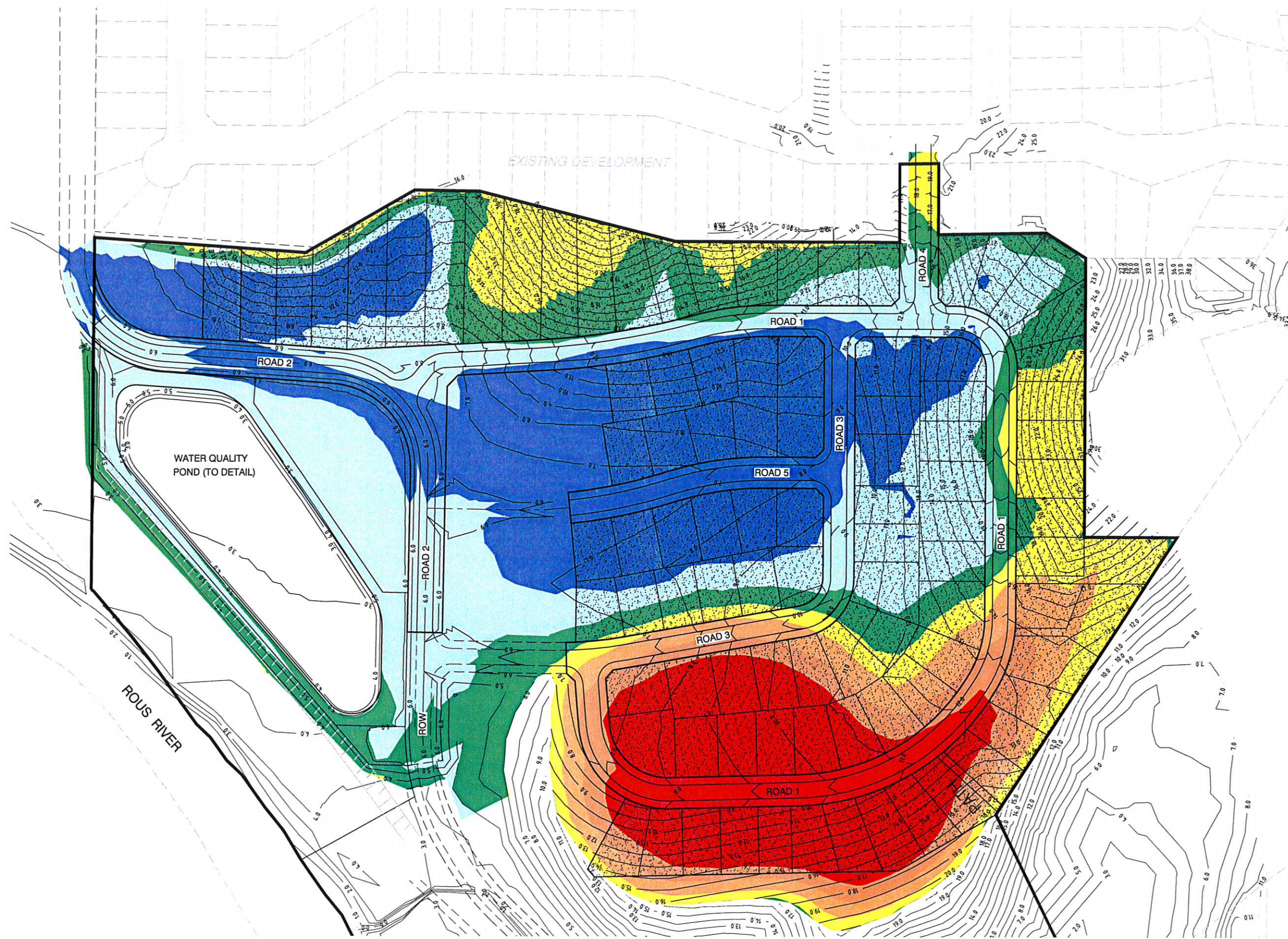
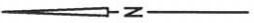
This document is produced by Cardno MBK (Qld) Pty Ltd solely for the benefit of and use by the client in accordance with the terms of the retainer. Cardno MBK (Qld) Pty Ltd does not and shall not assume any responsibility or liability whatsoever to any third party arising out of any use or reliance by that party on the content of this document.



Cardno MBK (Qld) Pty Ltd ACN: 051 074 992
Commercial Centre, Isle of Capri
Gold Coast City, Queensland 4217
Email: gco@gold.cardno.com.au

METRICON QLD PTY. LTD.		SCALE -- 1: 2500	A1
PROPOSED RESIDENTIAL DEVELOPMENT		DATE -- MAY, 2006	Rev. E
PROPOSED LOT DIMENSIONS		DRAWING No.	7214/6/1-DA FIG 4

YIELD :- STAGE 1 OT 3 INCLUSIVE - 96
RESIDENTIAL LOTS INCLUDING
- 7 DUPLEX LOTS (SHOWN ●)
NOTE : BOUNDARY OF SUBJECT LAND
SHOWN THUS :-

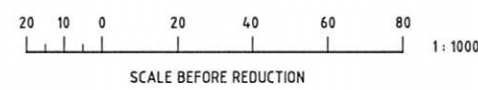


EARTHWORKS PERCENTAGE

	AREA
CUT 8m+	13,354m ²
FILL 8m+	0m ²
TOTAL	13,354m ²
"DEVELOPMENT SITE" AREA	76,336m ²
% OF SITE > 8m DEPTH	17.5%

LEGEND

- CUT DEPTH 8m+
- CUT DEPTH 5-8m
- CUT DEPTH 2-5m
- CUT DEPTH 0-2m
- FILL DEPTH 0-2m
- FILL DEPTH 2-4m
- FILL DEPTH 4m+ (7m MAX.)
- "DEVELOPMENT SITE" AREA



© Cardno (Qld) Pty Ltd All Rights Reserved 2002.
 Copyright in the whole and every part of this drawing belongs to Cardno (Qld) Pty Ltd and may not be used, sold, transferred, copied or reproduced in whole or in part in any manner or form or on any media, to any person other than by agreement with Cardno (Qld) Pty Ltd.



This document is produced by Cardno (Qld) Pty Ltd solely for the benefit of and use by the client in accordance with the terms of the retainer. Cardno (Qld) Pty Ltd does not and shall not assume any responsibility or liability whatsoever to any third party arising out of any use or reliance by third party on the content of this document.

XREF'S FILE NAME: G:\7214\06\SKETCH\XREF\72140601_11.dwg; EXISTING CONTOURS.dwg; SLOPE ANALYSIS.dwg
 CAD FILE NAME: G:\7214\06\SKETCH\72140601-DA FIGURE 10C.dwg

METRICON QLD PTY LTD		SCALE: 1:1000	A1
PROPOSED RESIDENTIAL DEVELOPMENT		DATE: AUGUST, 2004	Rev. C
PROPOSED FINISHED SURFACE CONTOURS		DRAWING No.	
		7214/06-DA FIG 10	

DA FIGURE 10C (17/05/06)
 PROPOSED FINISHED SURFACE CONTOURS