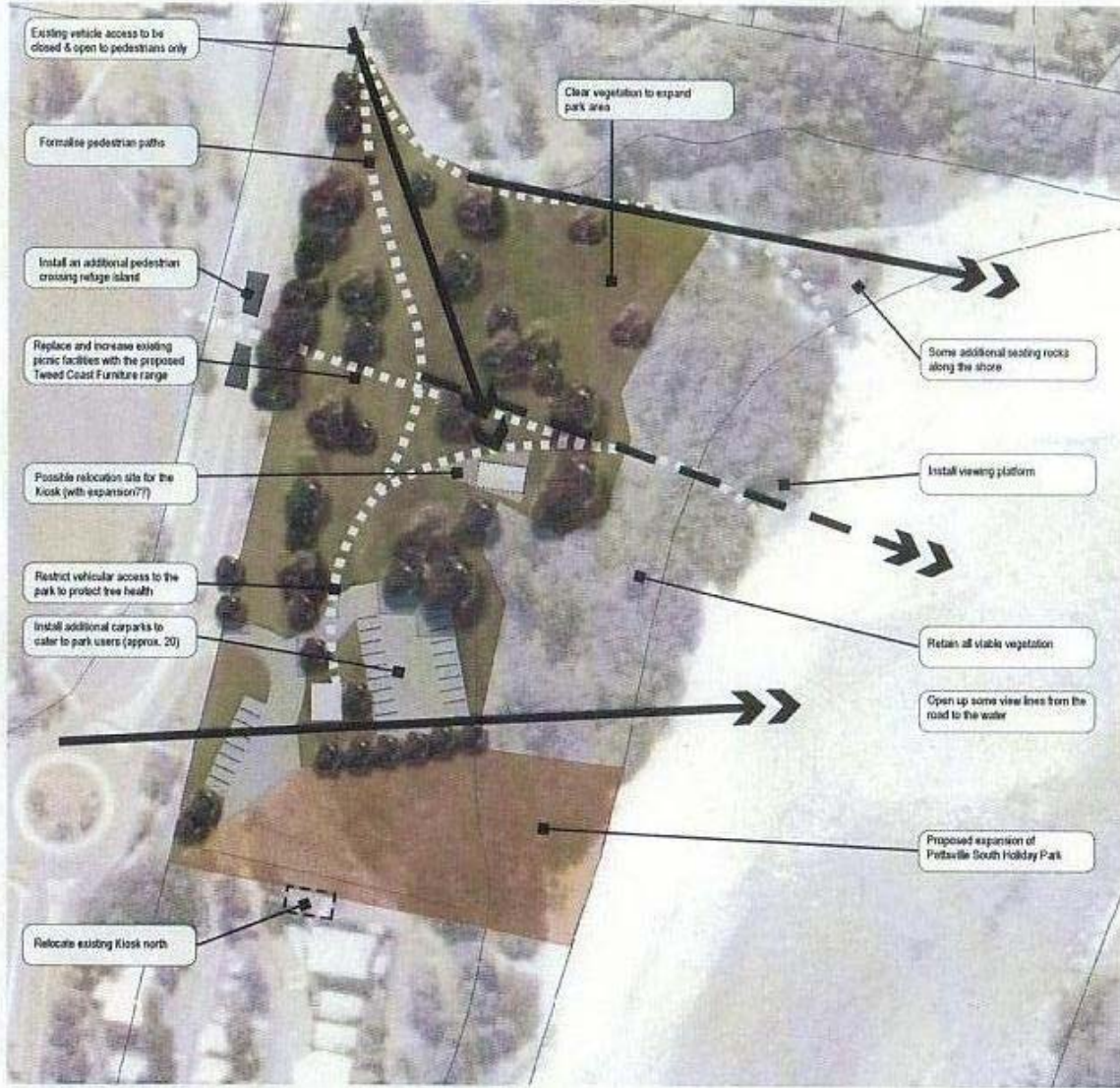


Attachment 1

DataWorks Document Number: 1497569



OPEN SPACE CONNECTIONS



EXISTING VEGETATION



LOGISTICAL CONFLICTS



AREAS OF USE & EXPANSION



EXISTING & PROPOSED VIEWLINES

DRAFT
NOT FOR DISTRIBUTION



POTTSVILLE KIOSK

OCTOBER, 2006.



OPTION 1



Function

- Central Point.
- Place of identity and meeting.
- Kept generic for use as meeting point, event activities. ie. swimming, paddling, fishing, triathlon etc.
- Meeting point for youth sporting groups as a base for training.
- Location for educational groups to use as outdoor room.
- Use as stage for events; weddings, music etc.
- BBQ/Picnic gathering within and feeding auxiliary seating areas within landscape.

Placement

- Centrally viewed and traveled node.
- Crossover point from park to creek.
- Cool winds filter through to park
- Potential stage/backdrop for gatherings and events.
- Temporary point of use when traveling from/to creek.
- Boardwalk seating retains creek dunes.

Surrounds

- Landscape with auxiliary seating and gathering areas.
- Space for larger group gatherings to the front.
- Access paths to the creek to either side.
- Complement BBQ and picnic areas within park.



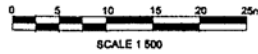
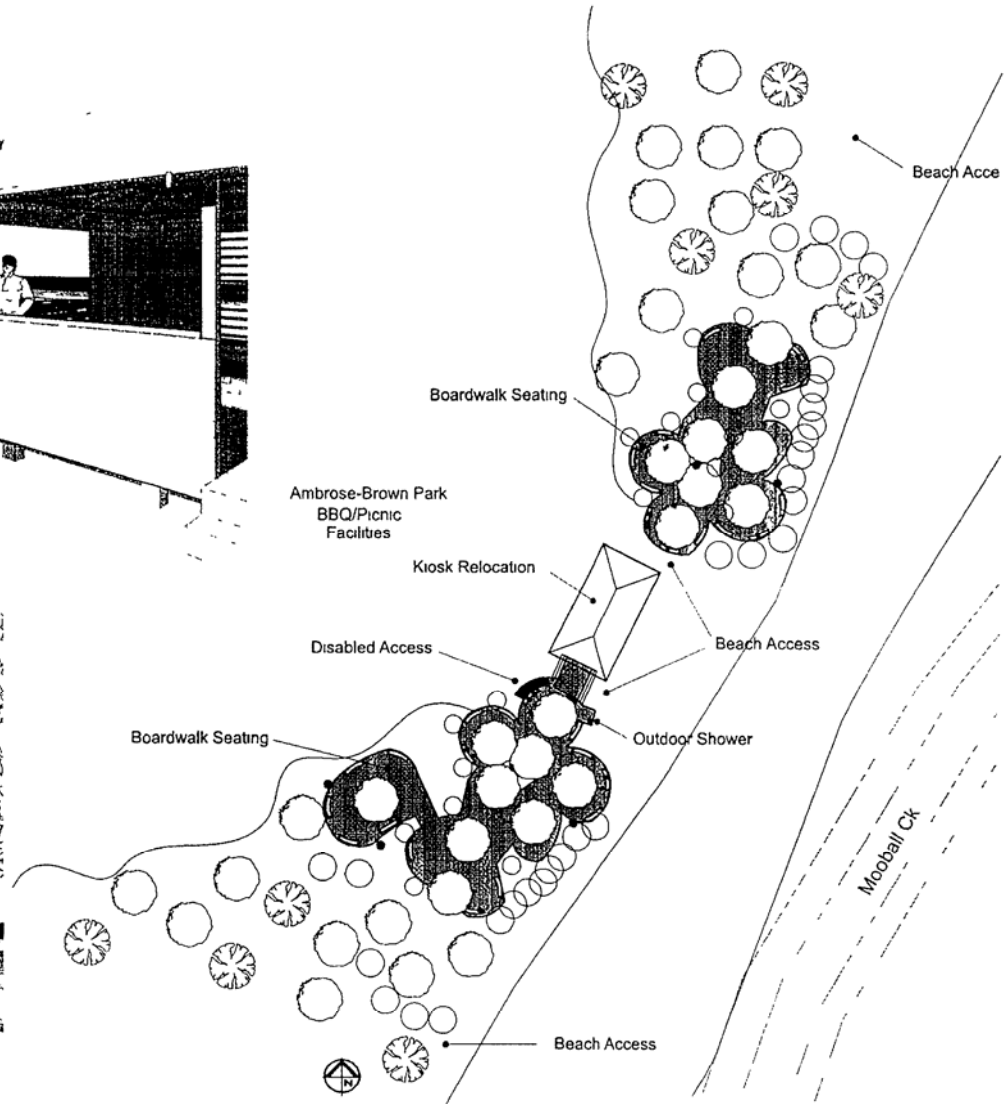
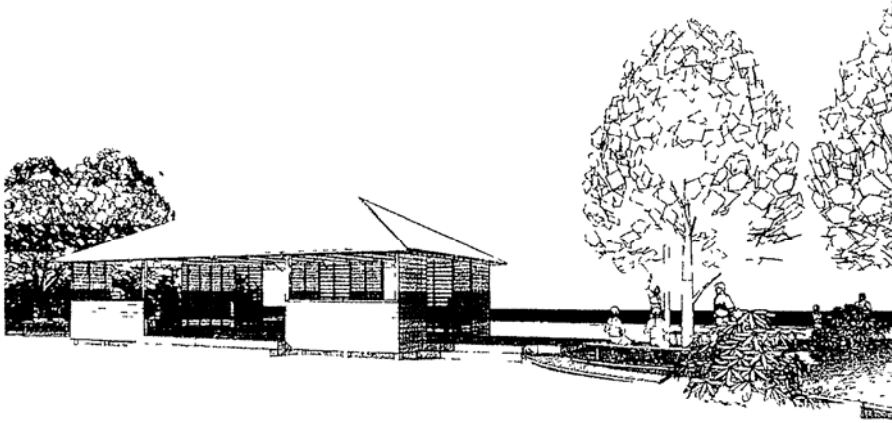
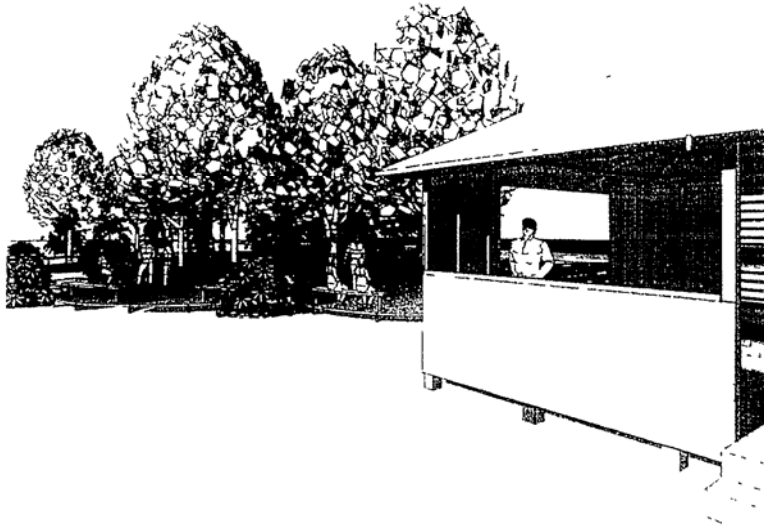
OPTION 1

POTTSVILLE KIOSK

OCTOBER, 2006.

OPTION 1

The Central Meeting Point

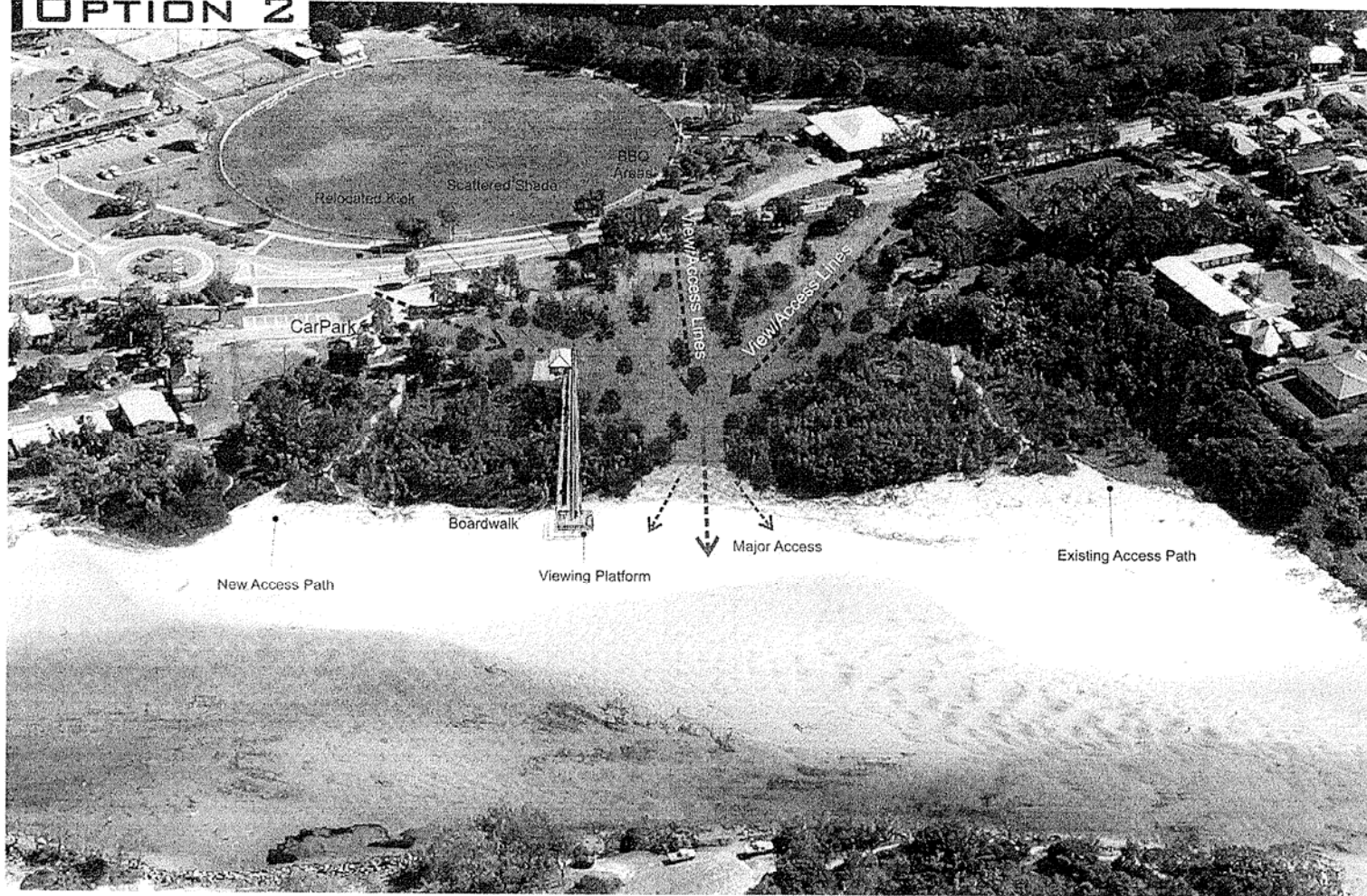


OPTION 1

POTTSVILLE KIOSK

OCTOBER, 2006

OPTION 2



- Function**
- Reminiscent of the iconic jetty boardwalk.
 - Place of identity and meeting
 - Kept generic for use as meeting point.
 - Boardwalk through native vegetation to arrival at viewing platform over creek.
 - Meeting point for youth sporting groups as a base for training.
 - Location for educational groups to use as outdoor room.
 - BBQ/Picnic gathering within and in subsequent park locations

- Placement**
- Located at arrival point for boardwalk.
 - Apparent from park entry points.
 - Temporary point of use when traveling from/to creek along boardwalk.

- Surrounds**
- Landscape with auxiliary seating and gathering areas.
 - Major access opening to the creek.
 - Complement BBQ and picnic areas within park.
 - Minor access paths to the north and south.



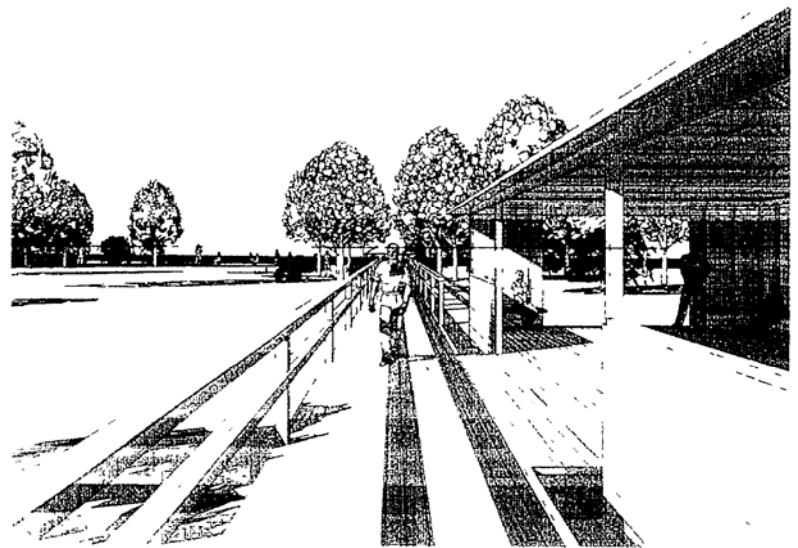
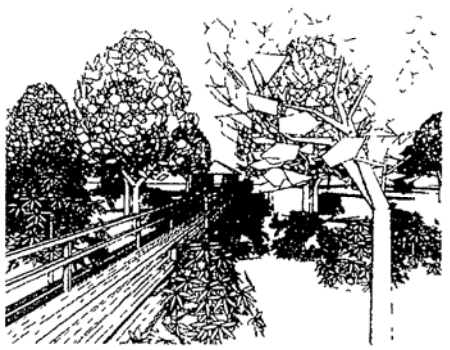
OPTION 2

POTTSVILLE KIOSK

OCTOBER, 2006.

OPTION 2

The Jetty



DataWorks Document Number: 1497570

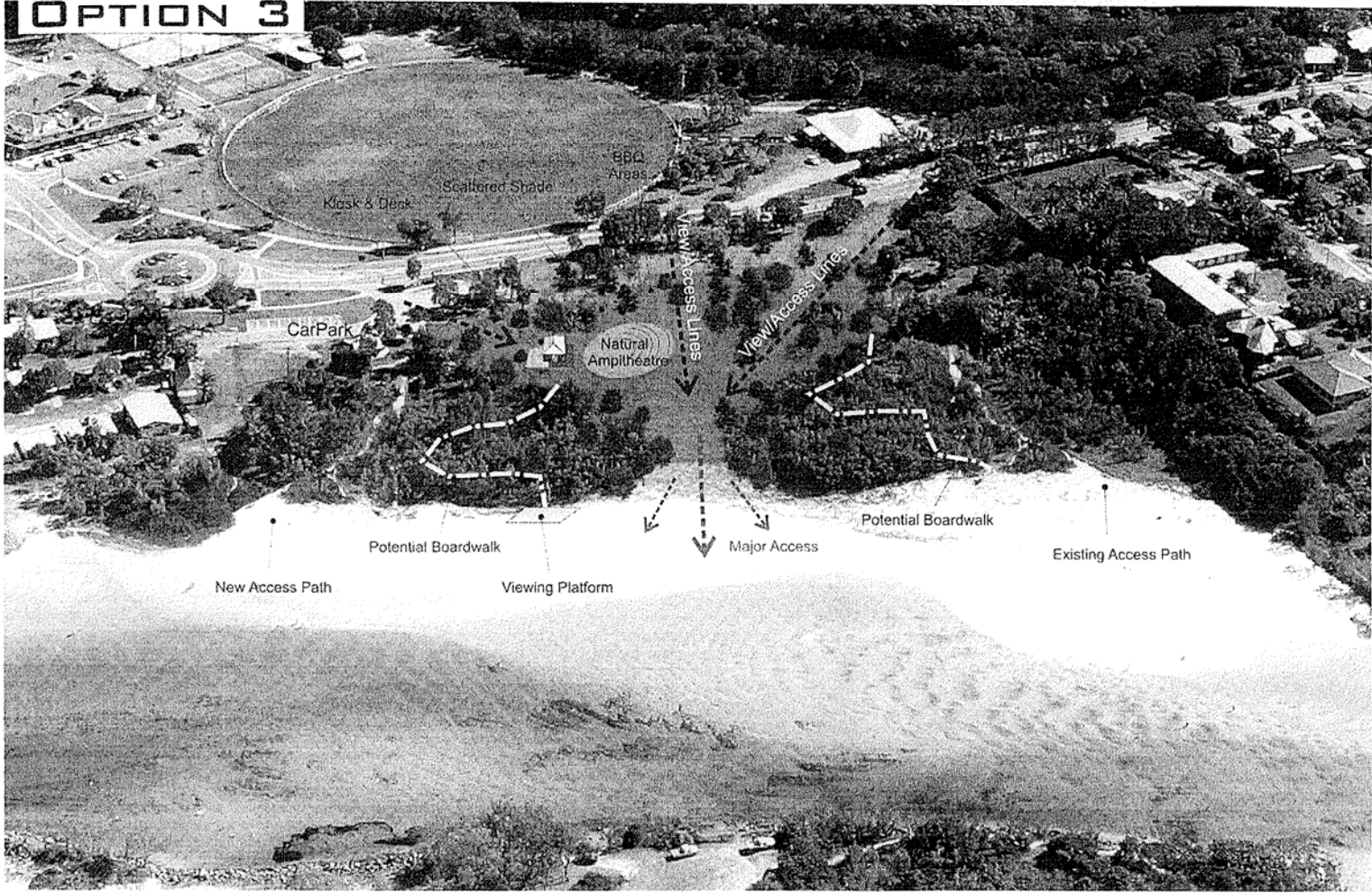


OPTION 2

POTTSVILLE KIOSK

OCTOBER, 2006

OPTION 3



- Function**
- Events and Major Gatherings.
 - Place of identity and meeting
 - Kept generic for use as stage during events and picnic/BBQ space at other times.
 - Location for educational groups to use as outdoor teaching room.
 - Deck addition for use as stage for events; weddings, music etc.

- Placement**
- Centrally located to accommodate large gatherings
 - Located to allow circulation around perimeter.
 - Cool winds filter through to park
 - Potential stage/backdrop for gatherings and events.
 - Temporary point of use when travelling from/to creek

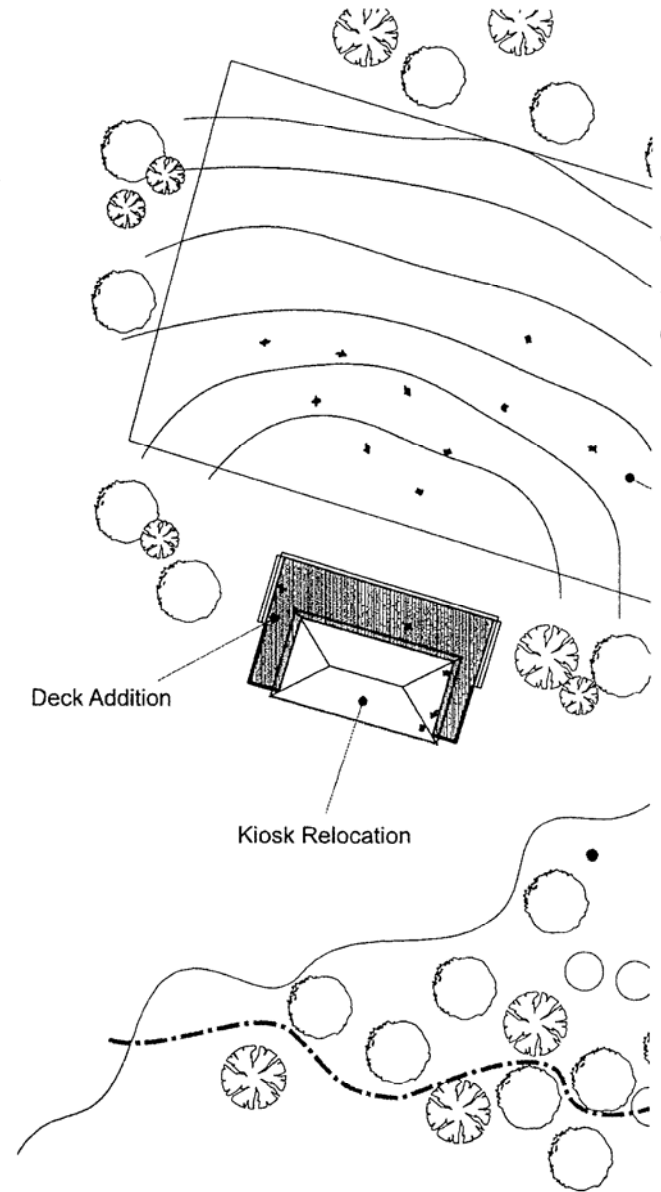
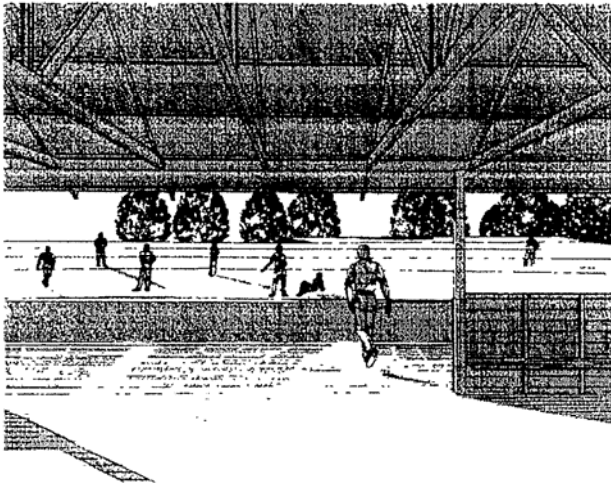
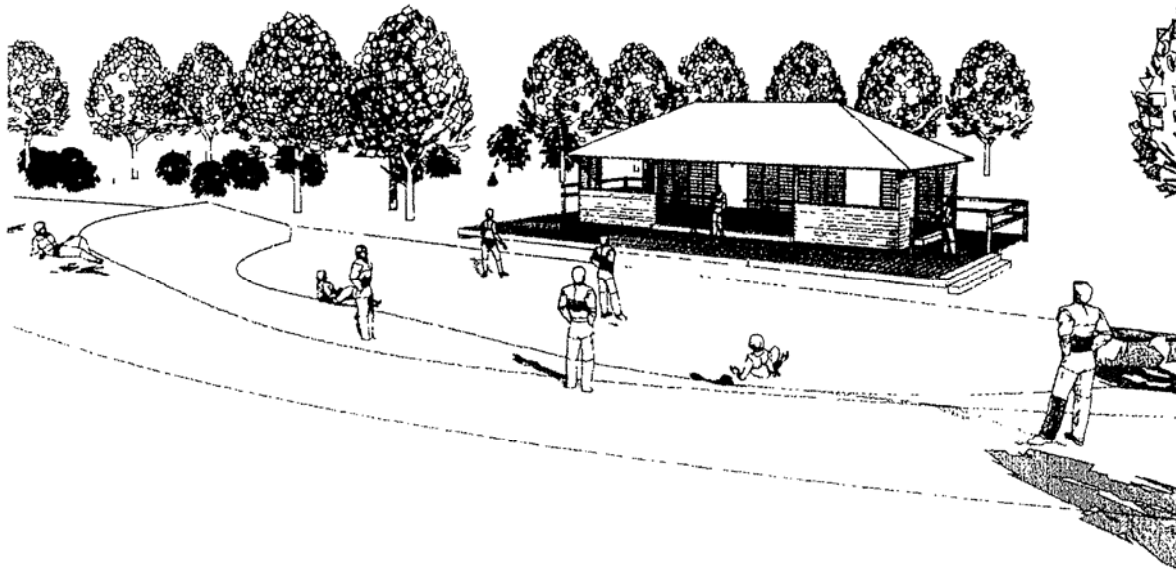
- Surrounds**
- Major access opening to the creek.
 - Complement BBQ and picnic areas within park.
 - Minor access paths to the north and south.

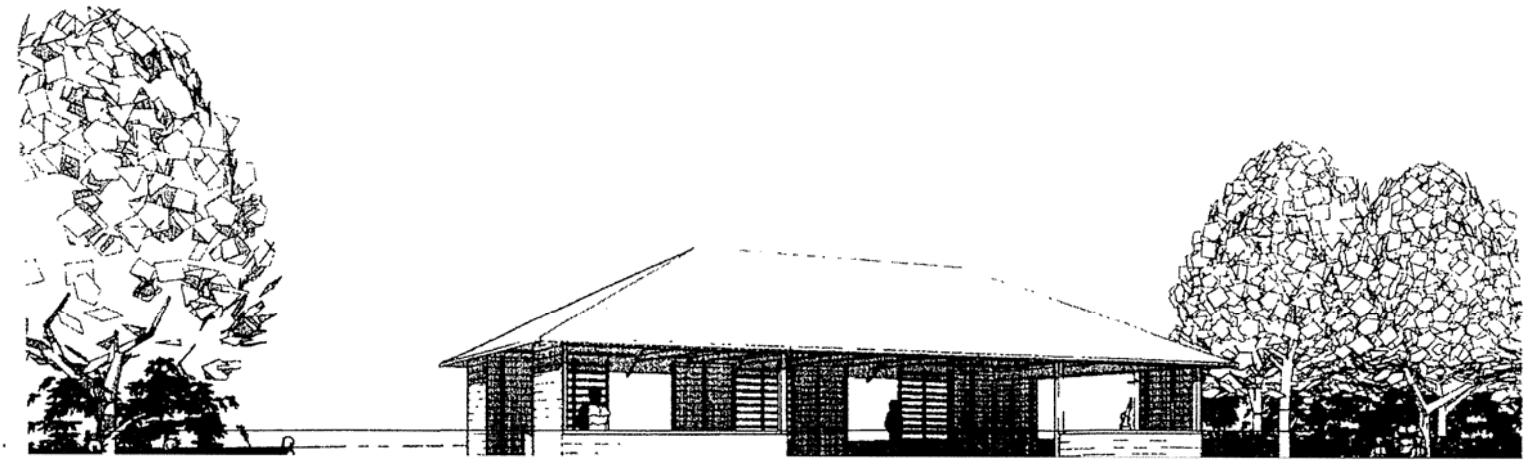
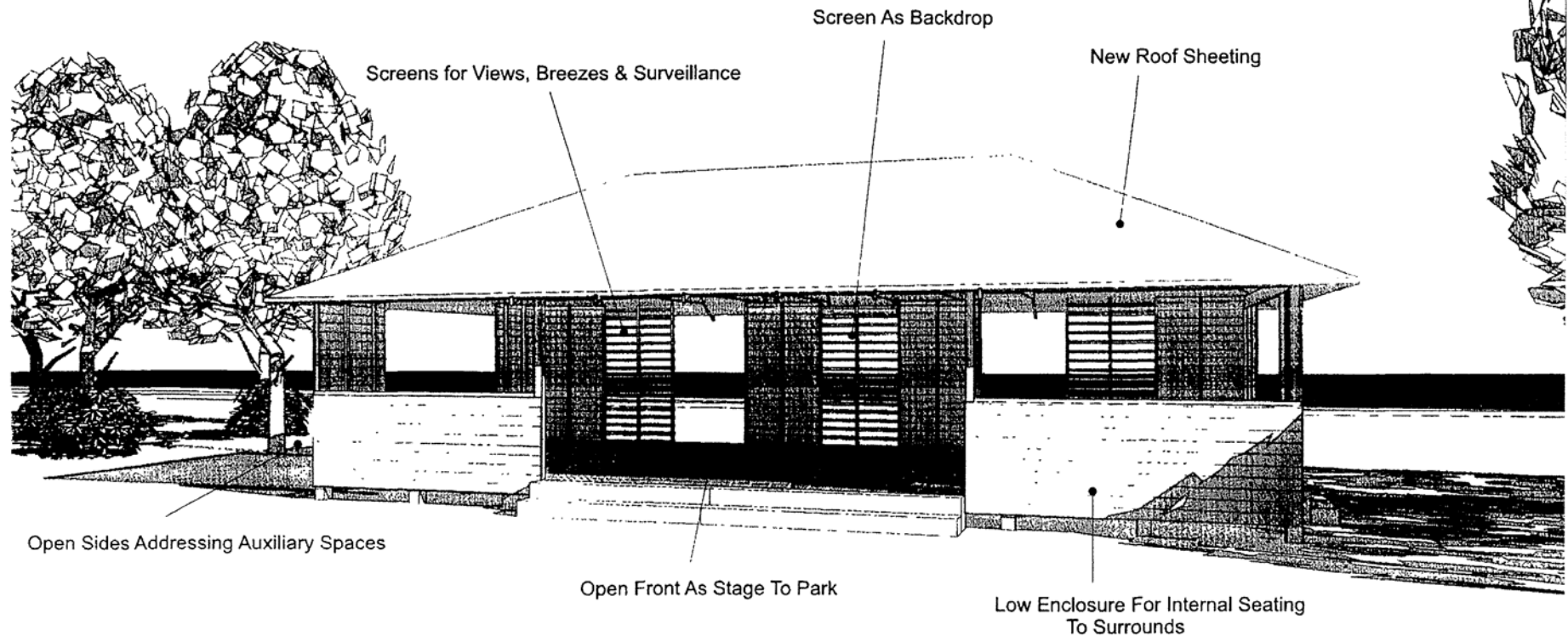


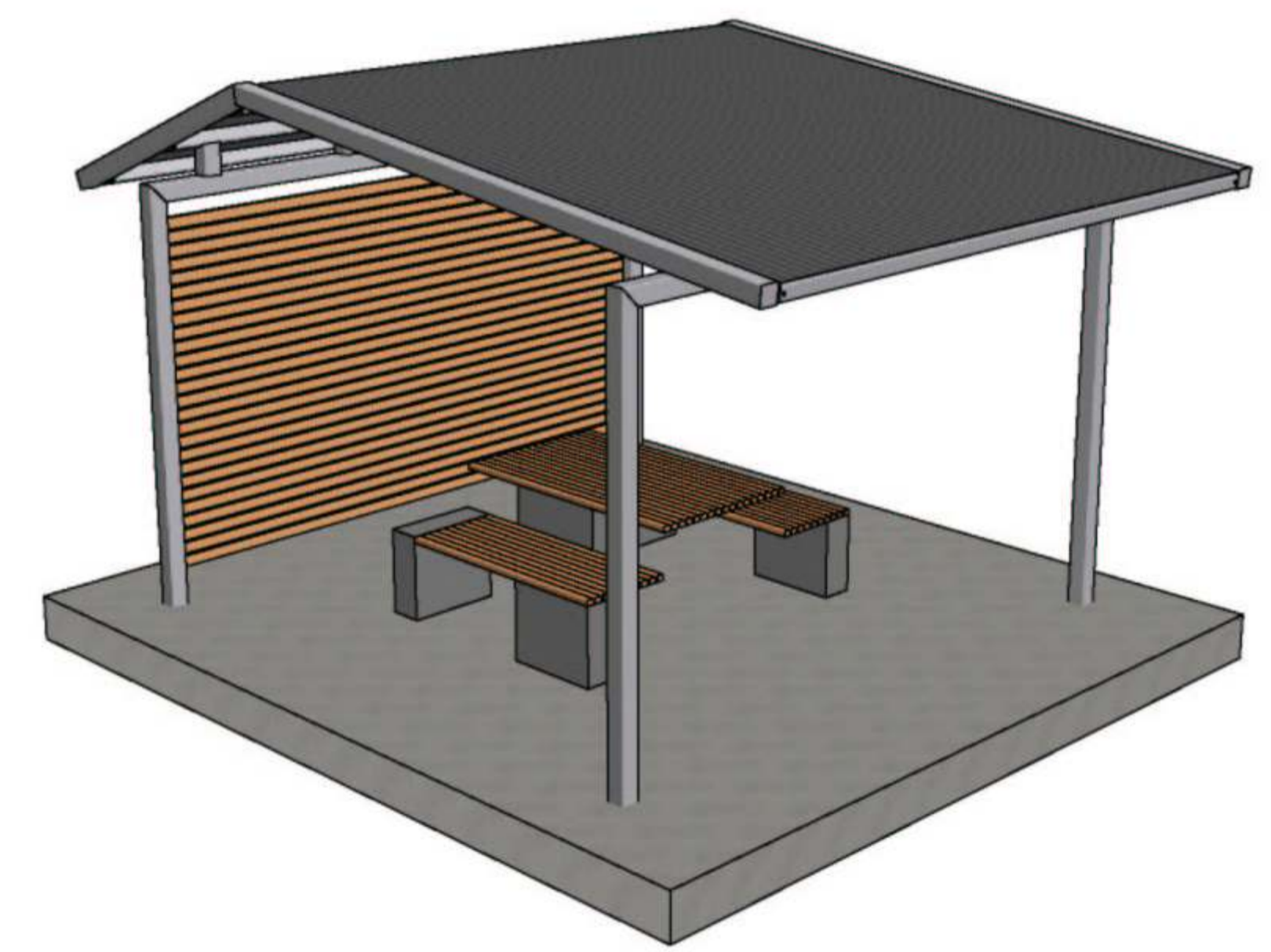
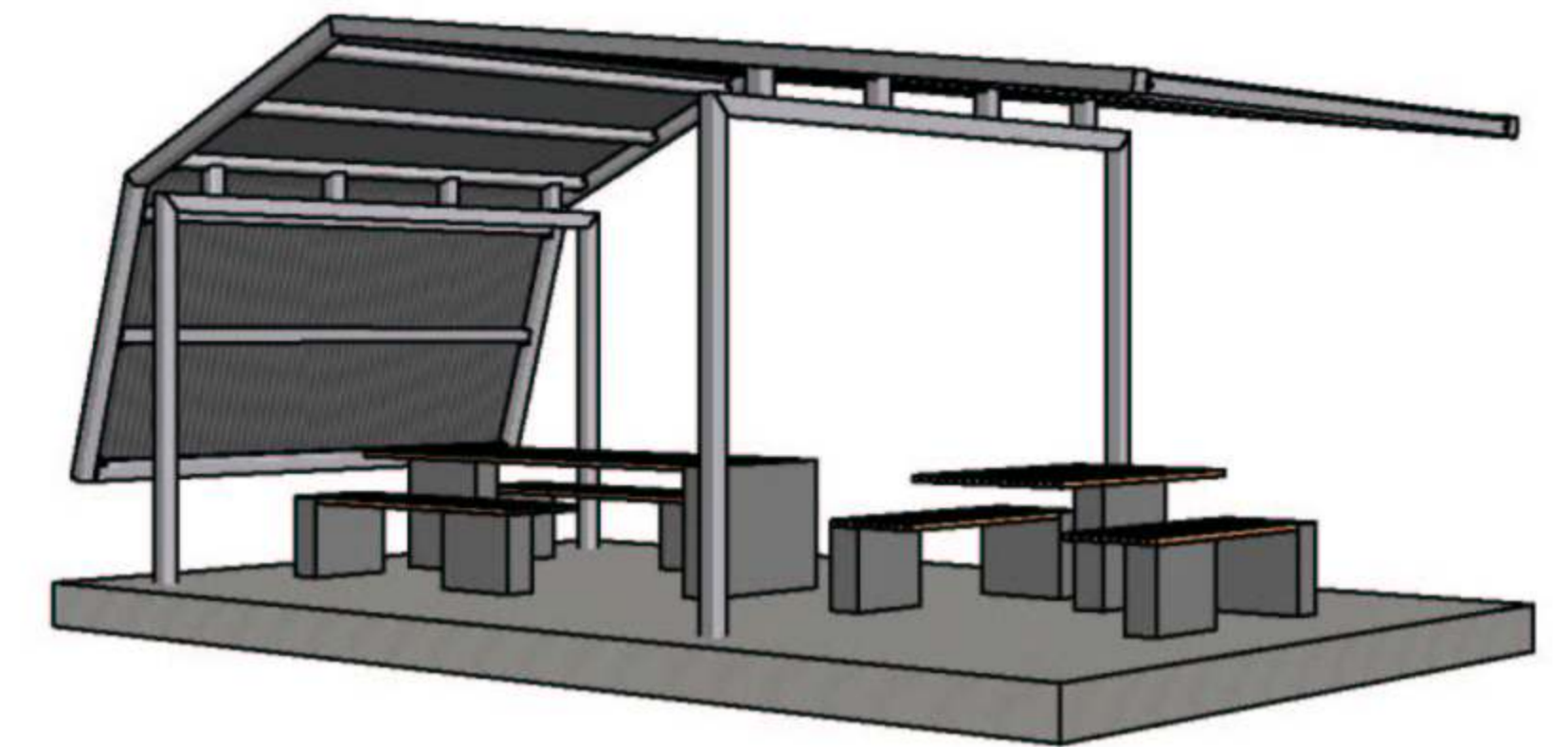
OPTION 3

POTTSVILLE KIOSK

OCTOBER, 2006.







Shelter & Furniture examples