

# Budd Park Upgrade

Upcoming construction works



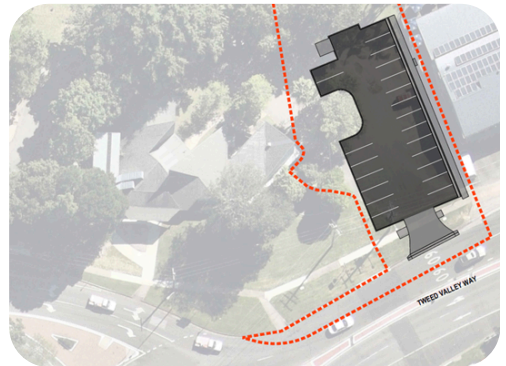
Budd Park is undergoing an upgrade, with construction starting in mid-September 2024. This may affect your business. Please note wet weather could delay the planned works.

## What's happening and when

### Stage 1

**What:** The carpark adjacent to the Riverview Hotel is being upgraded and will be closed. We are also constructing a new entrance/exit onto Tweed Valley Way.

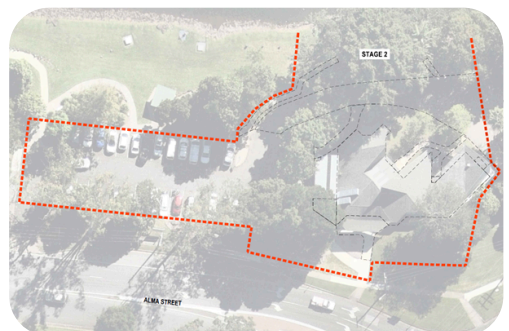
**When:** Mid-September to mid November 2024



### Stage 2

**What:** The World Heritage Rainforest Centre (also known as the Murwillumbah Visitor Information Centre) and the internal road that connects the two car parks are being demolished and will be closed. The public toilets will also be closed.

**When:** Early October to early November 2024



Go to [yoursaytweed.com.au/buddpark](https://yoursaytweed.com.au/buddpark) for more information.

## Stage 3

**What:** The parkland between the two car parks will be upgraded to include shelters, barbecues, picnic tables, seating, drinking fountain, bins, pathways, bike racks, and public art. This area will be closed for refurbishment. The public toilets will be open.



**When:** January to April 2025

## Alternative parking

There's ample car parking available on the opposite side of Tweed Valley Way, on the road reserve next to the Rail Trail.

## Public toilets

The public toilets in Budd Park will be closed during the demolition of the World Heritage Rainforest Centre. During this period, you can use the public toilets at Murwillumbah Railway Station or the toilets in Buckley Park, situated at the corner of Tweed Valley Way and Prospero Street.

## *Find out more*

Head to [yoursaytweed.com.au/buddpark](https://yoursaytweed.com.au/buddpark).

Thanks for your patience while we work on these upgrades! We can't wait for the new and improved Budd Park to be ready.