



Tweed Shire Coastal Hazards Appendix B

November 2013



Tweed Shire Coastal Hazards

Appendix B

Prepared For: Tweed Shire Council

Prepared By: BMT WBM Pty Ltd (Member of the BMT group of companies)

Tweed Shire Council has prepared this document with financial assistance from the NSW Government through the Office of Environment and Heritage. This document does not necessarily represent the opinions of the NSW Government or the Office of Environment and Heritage.



Kingscliff Coastal Hazards

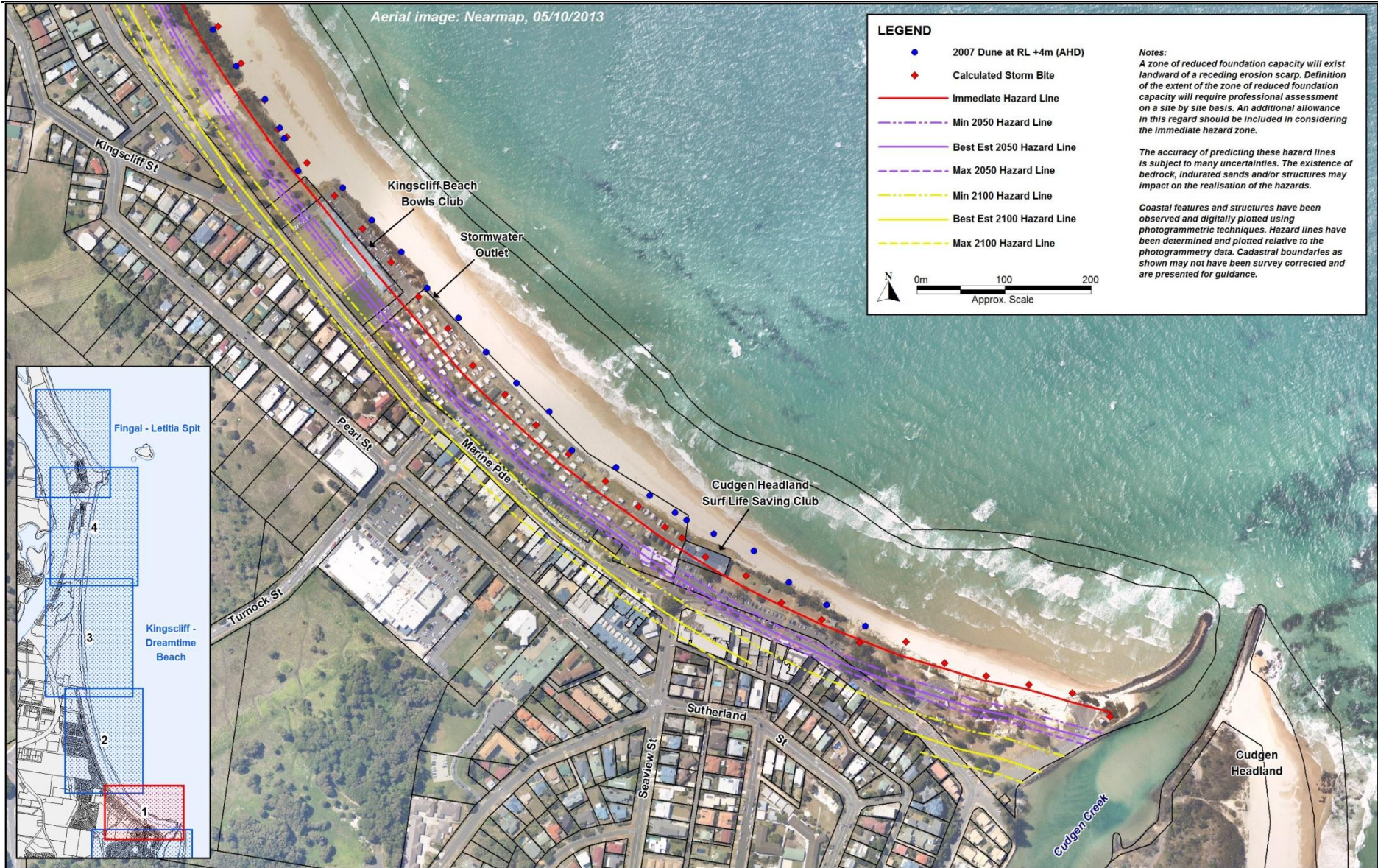


Figure B- 1 Erosion Hazard Zones: Kingscliff

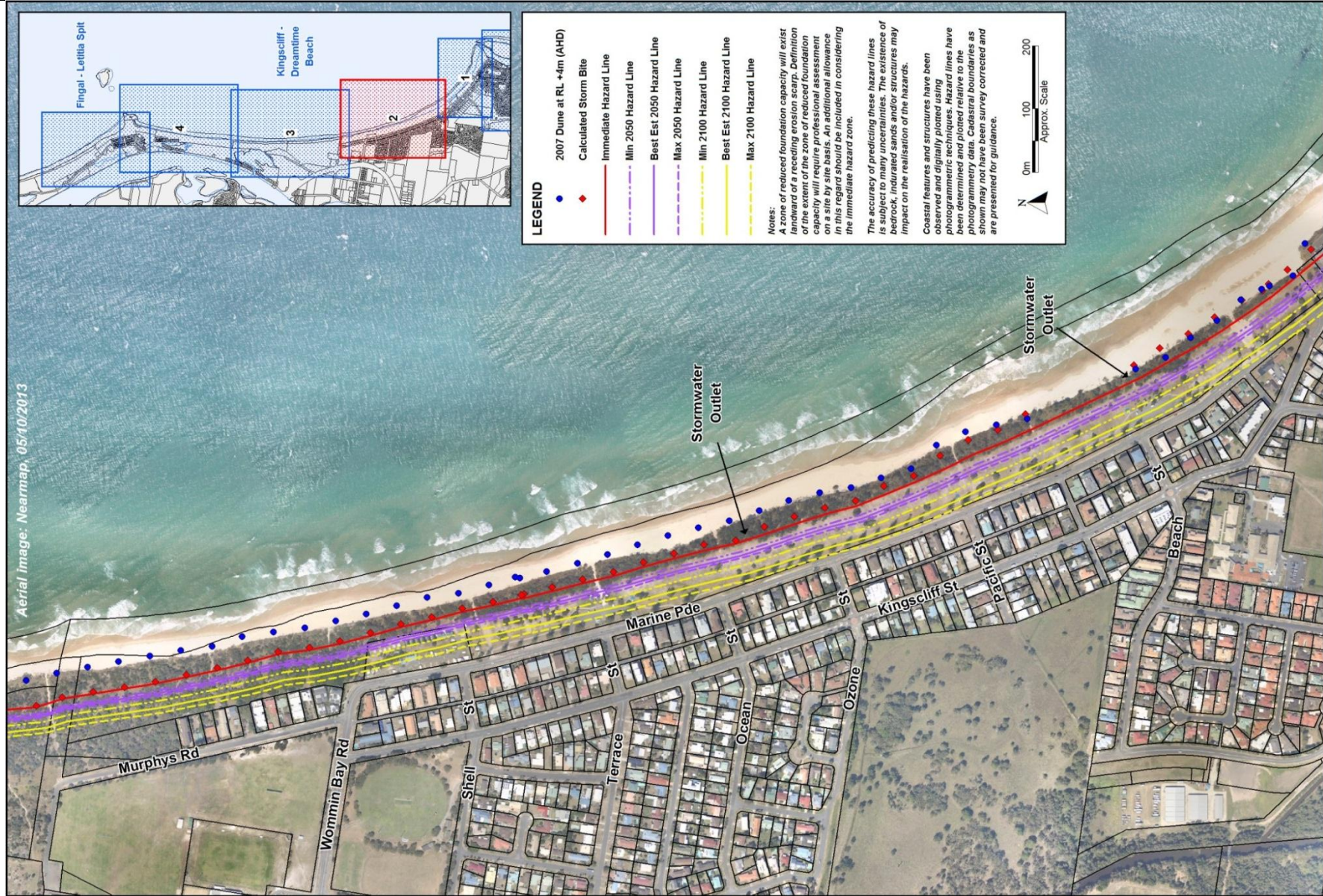


Figure B- 2 Erosion Hazard Zones: Kingscliff North

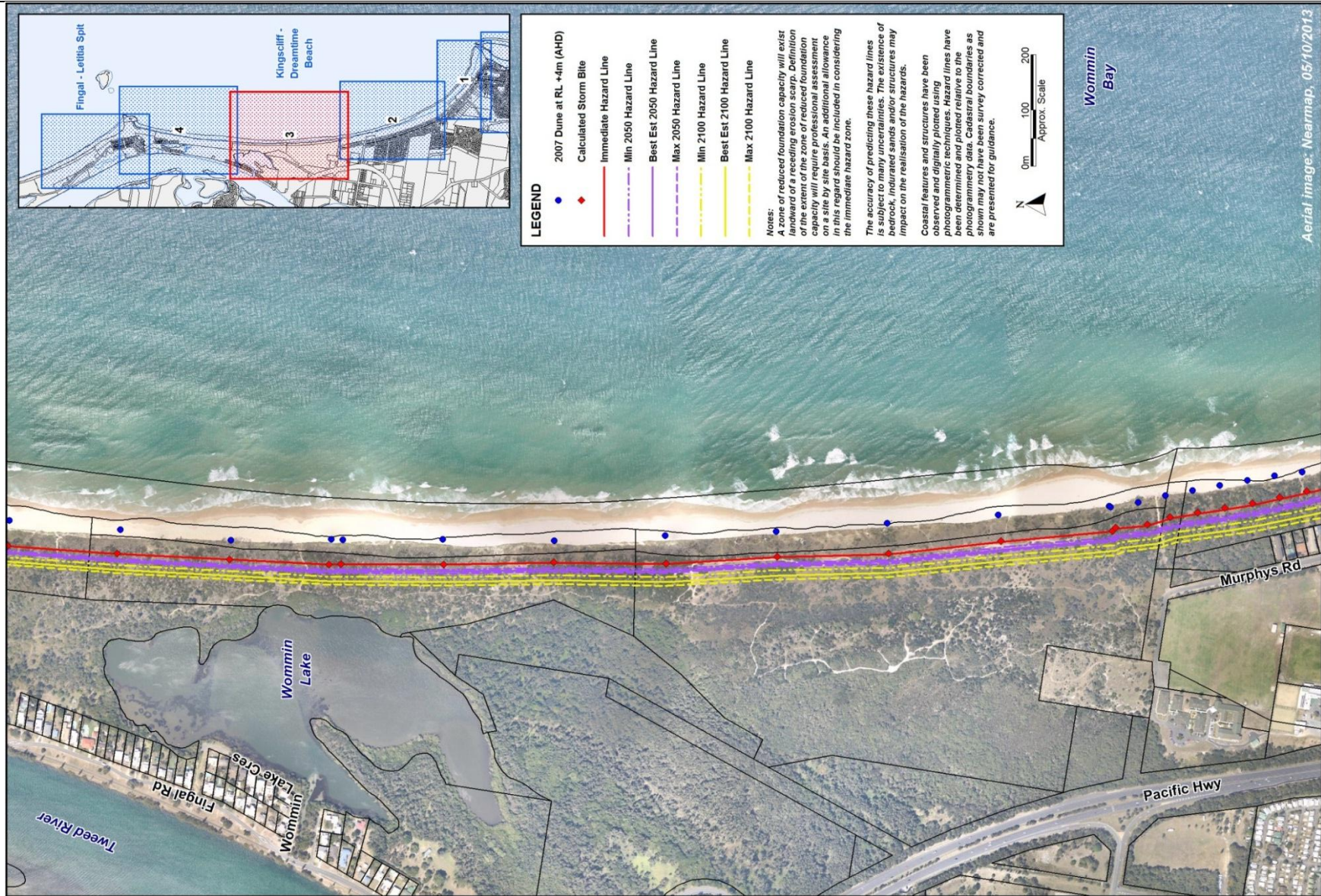


Figure B- 3 Erosion Hazard Zones: Murphys Road to Wommin Lake

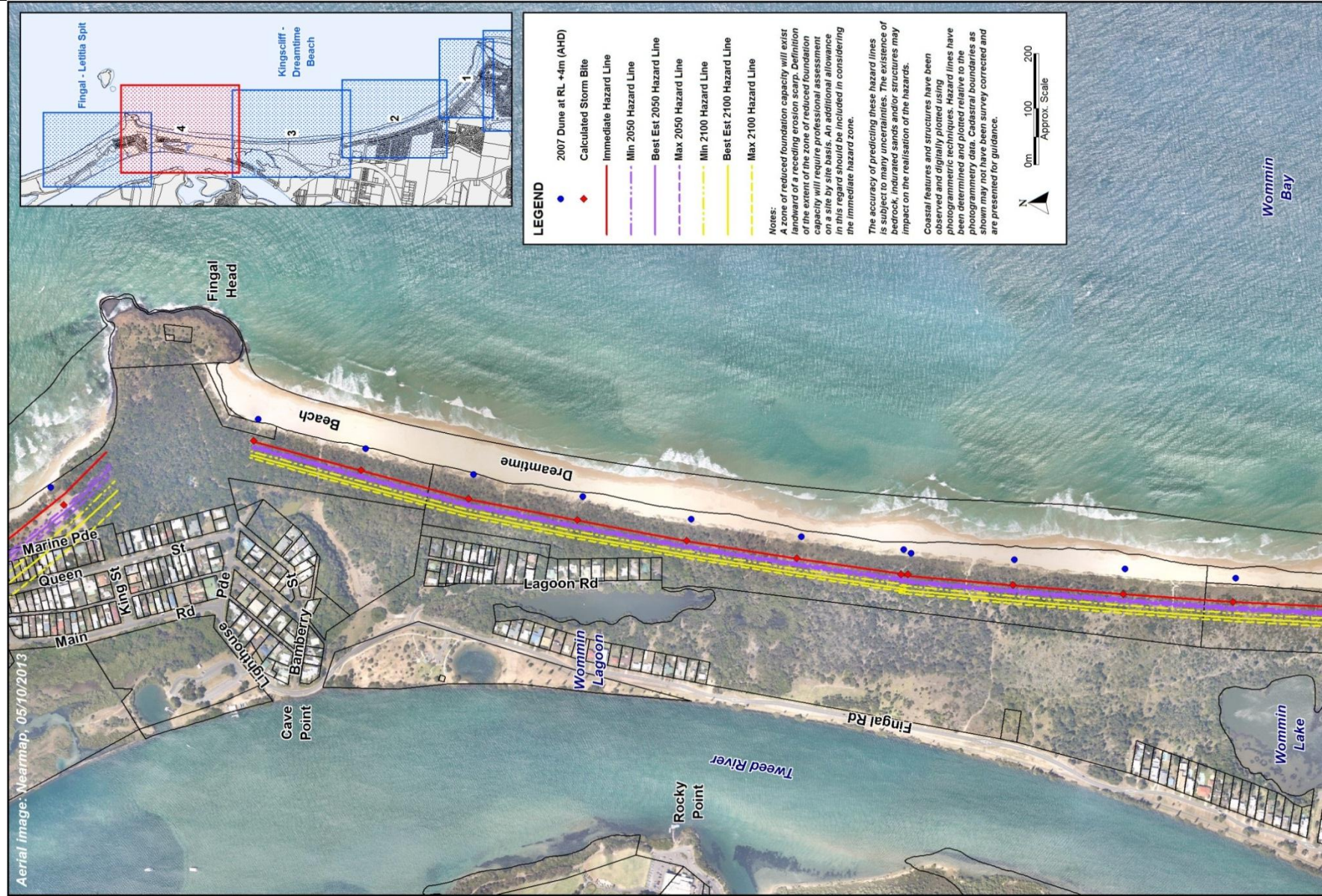


Figure B- 4 Erosion Hazard Zones: Dreamtime Beach



Figure B- 5 Kingscliff Wave Inundation Hazard Area



Figure B-6 Cudgen Creek Estuary Storm Tide Inundation Hazard Area

Tweed Shire Coastal Hazards

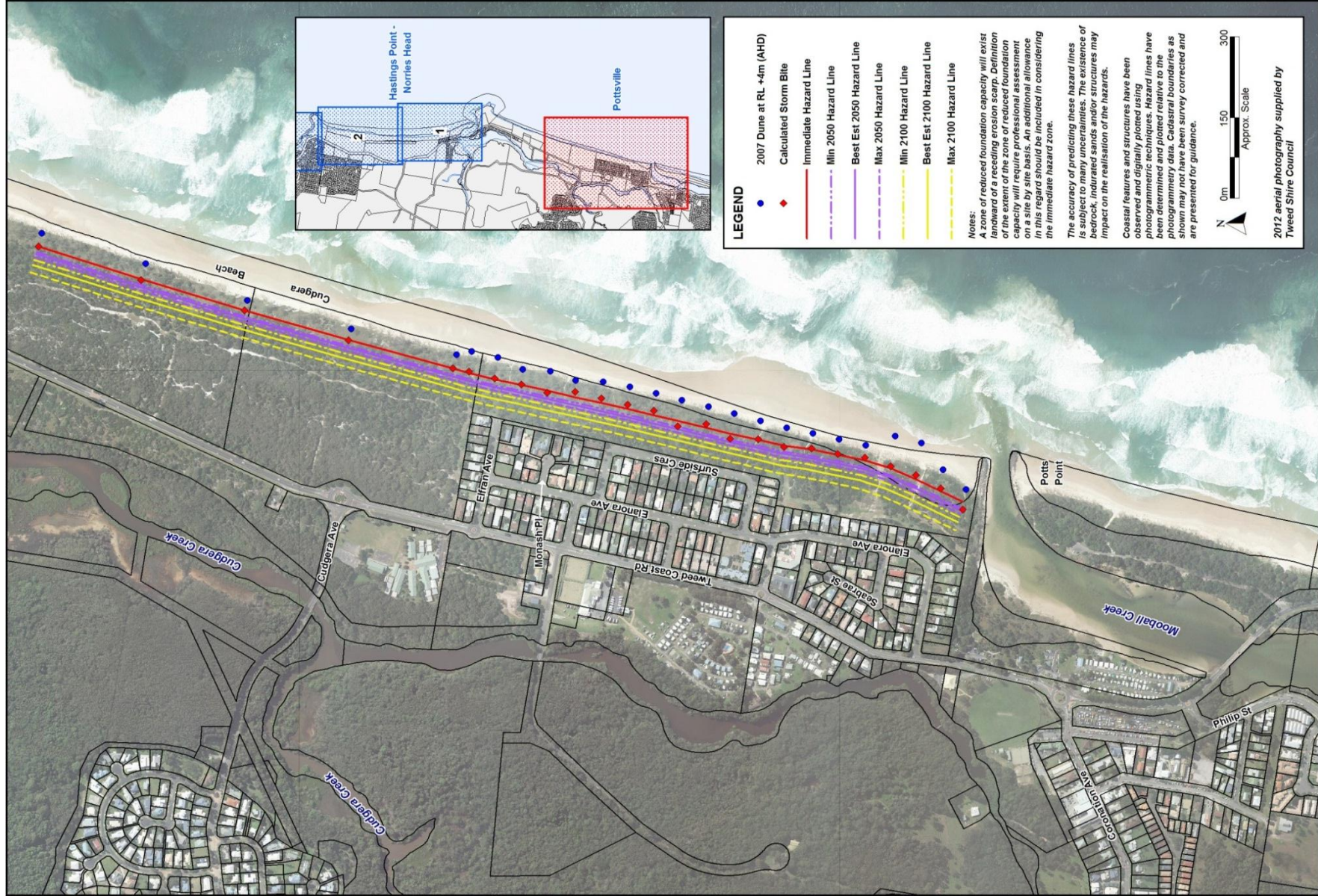


Figure B- 7 Erosion Hazard Extents: Pottsville



Figure B- 8 Mooball Creek Storm Tide Inundation Hazard Areas

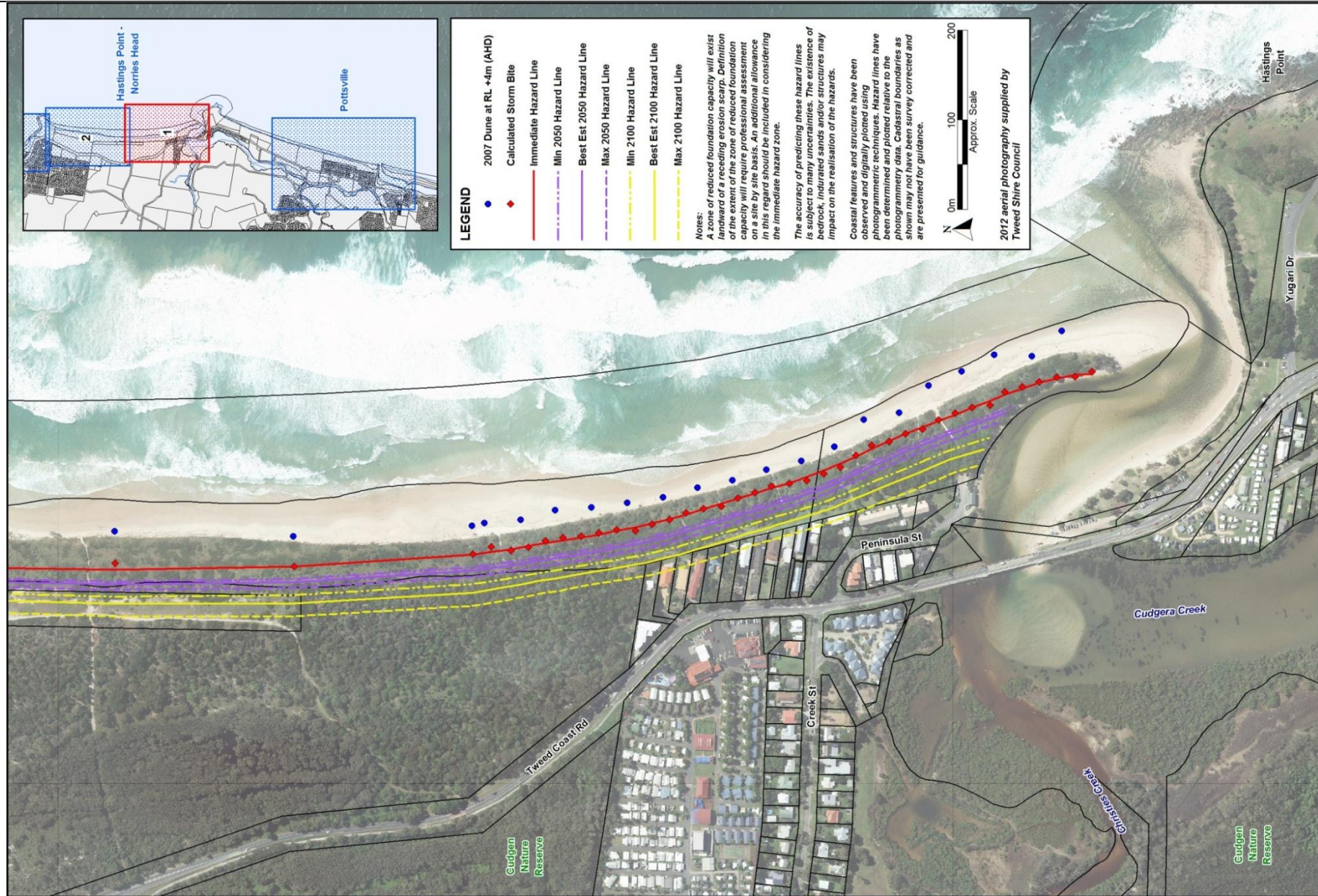


Figure B- 9 Erosion Hazard Extents: Hastings Point

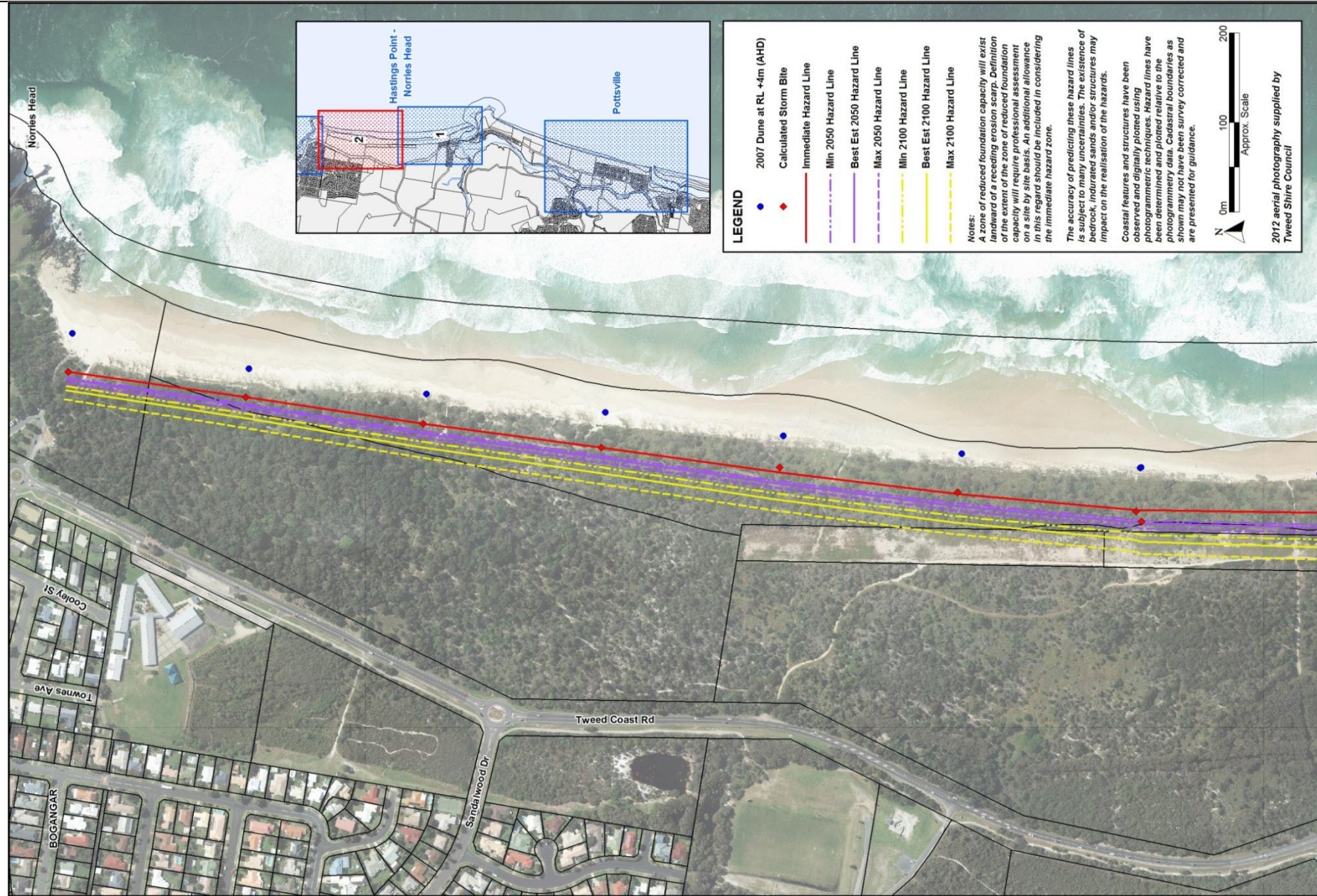


Figure B- 10 Erosion Hazard Extents: Pottsville to Norries Head (Bogangar South)

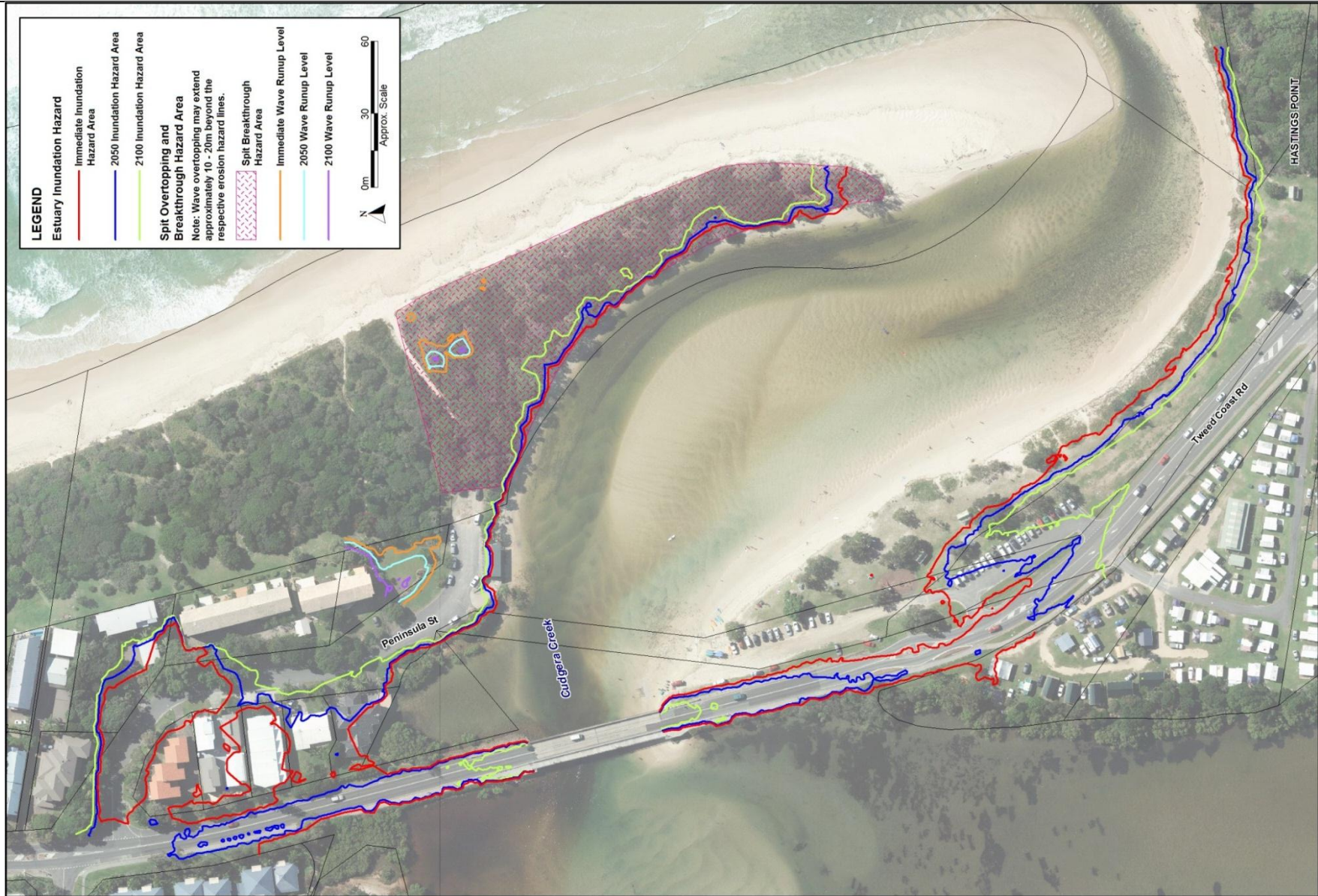


Figure B- 11 Cudgera Creek Storm Tide Inundation Hazard & Wave Overtopping and Breakthrough Hazard Areas

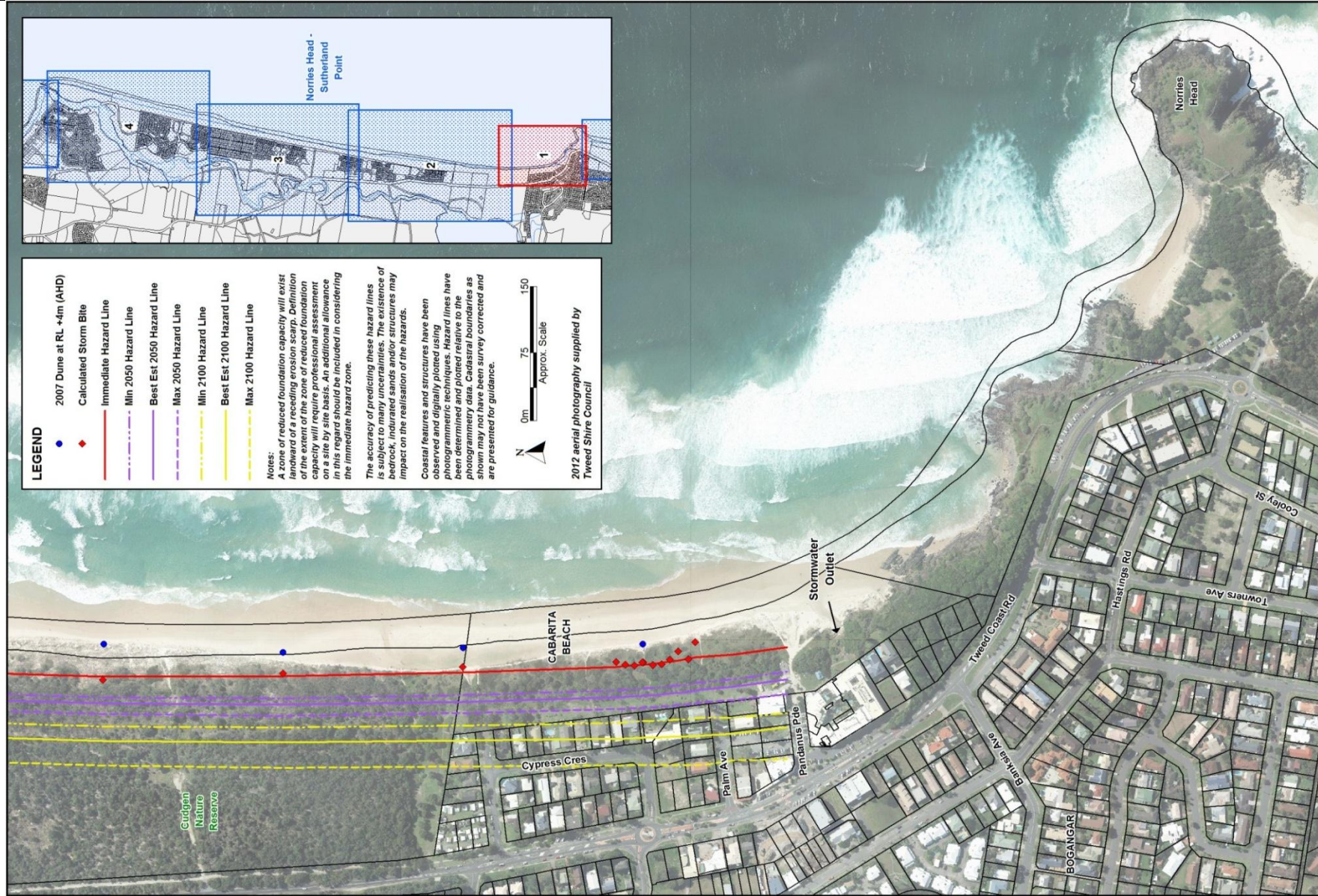


Figure B- 12 Erosion Hazard Extents: Cabarita Beach

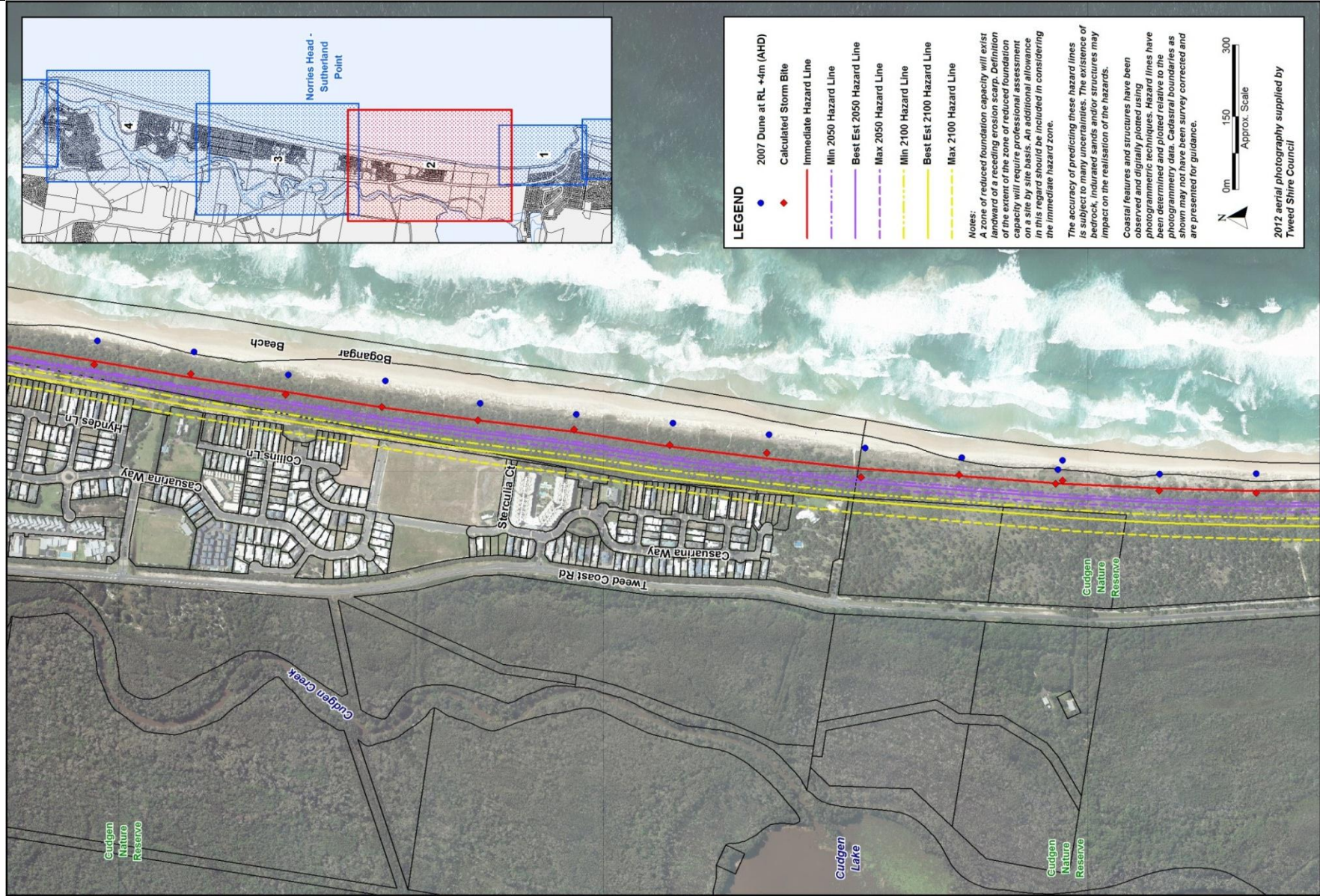


Figure B- 13 Erosion Hazard Extents: Casuarina South (Bogangar Beach)

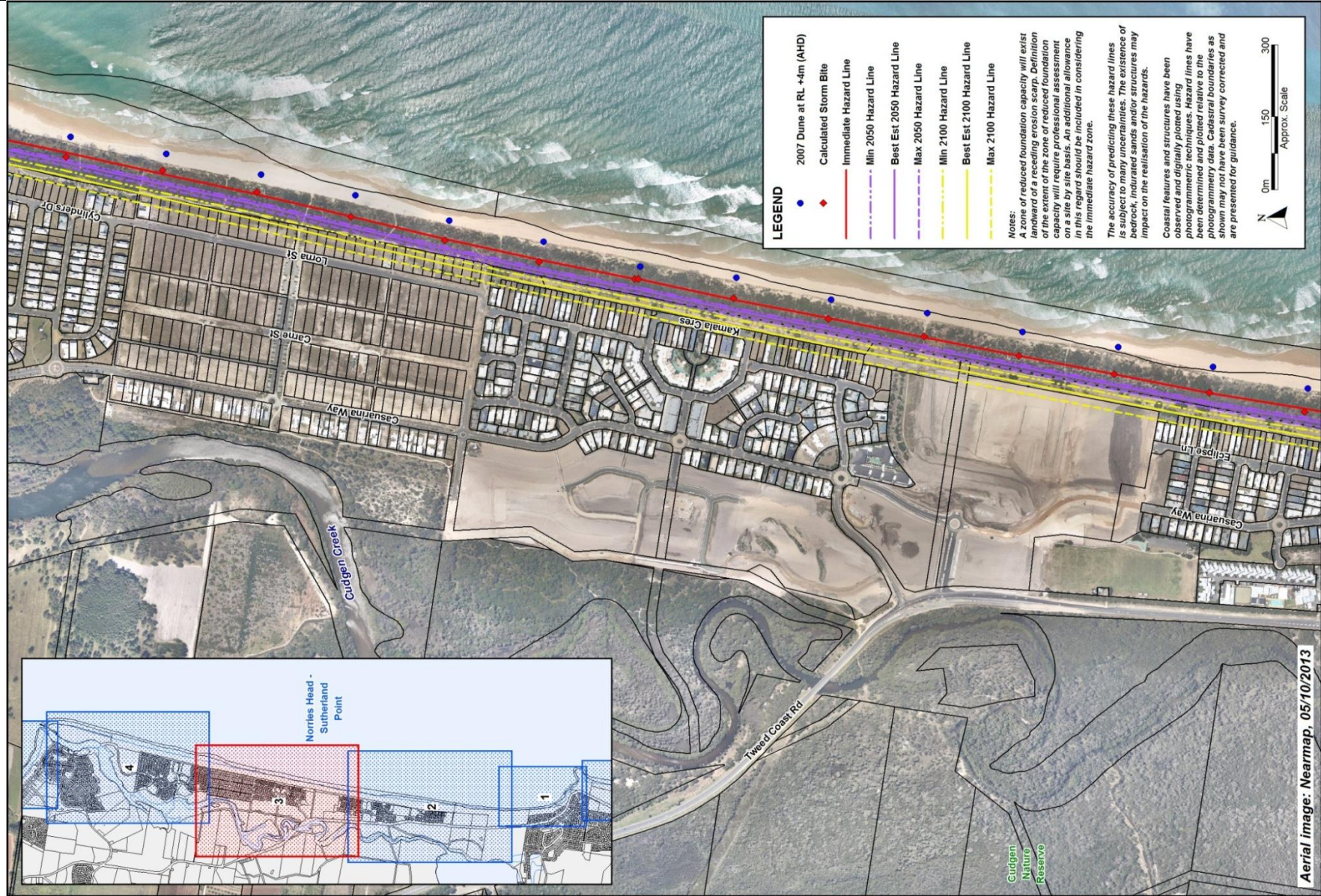


Figure B- 14 Erosion Hazard Extents: Casuarina (Central)

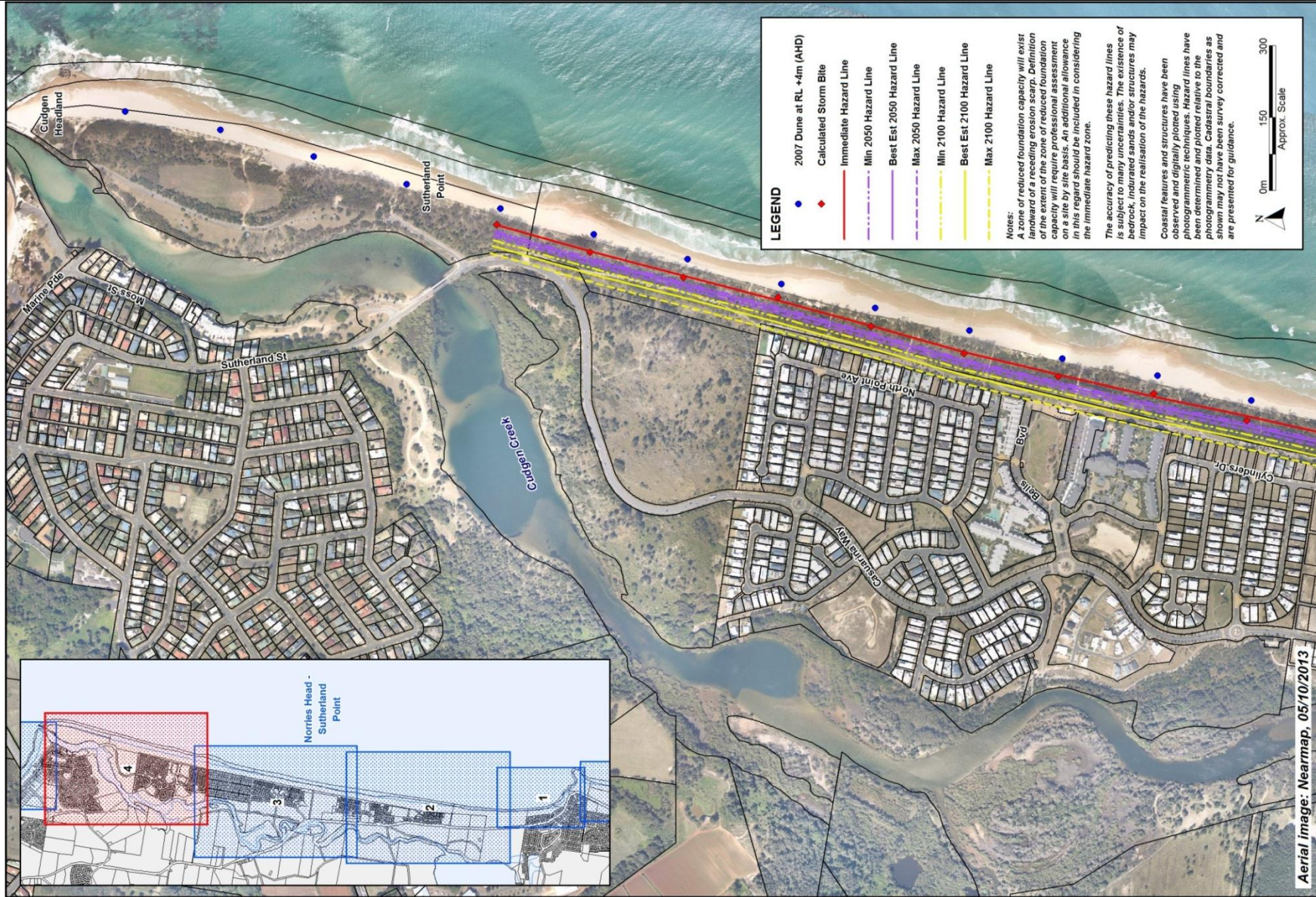


Figure B- 15 Erosion Hazard Extents: Casuarina North (Salt)

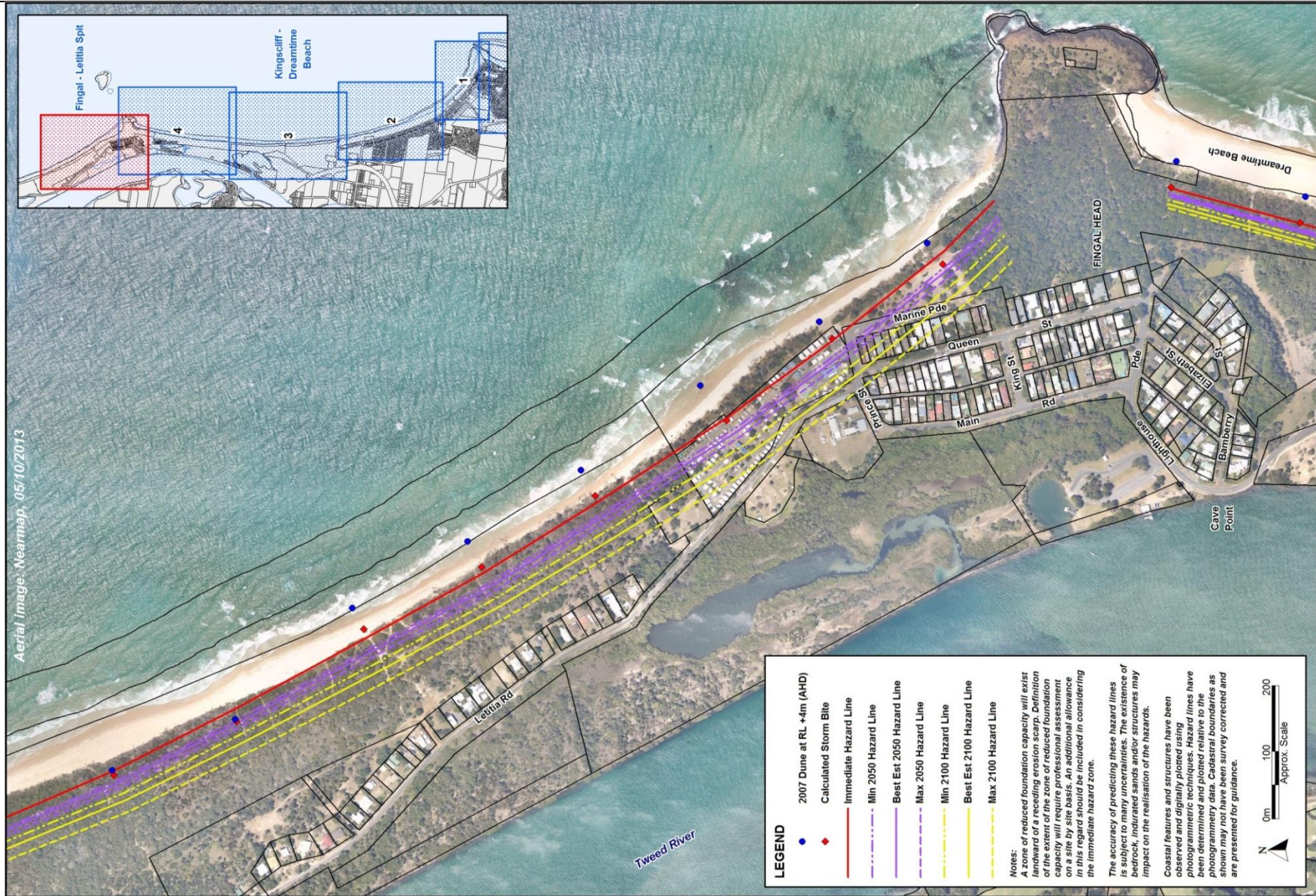


Figure B- 16 Erosion Hazard Extents: Fingal Head